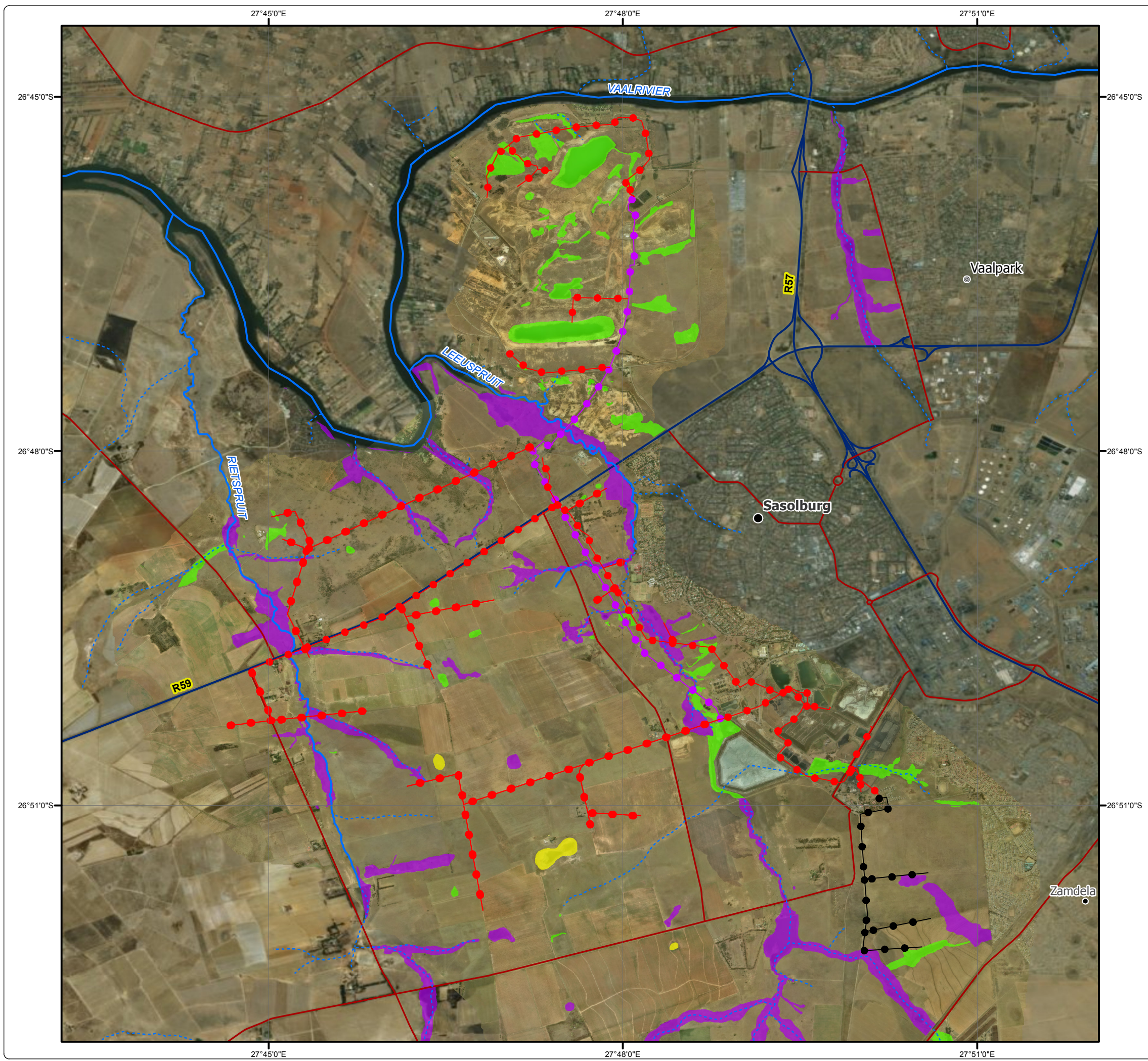


# Sasol Sigma Ash Backfilling Present Ecological Status (PES)

### Legend

- Major Town
- ⊙ Other Town
- Settlement
- Perennial River
- - - Non-Perennial River
- Arterial / National Route
- Secondary Road
- Present Ecological Status**
- PES = C
- PES = D
- PES = E
- Pipeline Layout**
- Potential Ash & Water Pipeline
- Existing Ash & Water Pipeline
- New Potential Ash & Water Pipeline



• Sustainability • Service • Positive Change • Professionalism • Future Focused • Integrity

Projection: Transverse Mercator Ref #: ajm.SAS5184.201807.087  
 Datum: WGS 1984 Revision Number: 1  
 Central Meridian: 27°E Date: 08/07/2018

