

# Sasol Sigma Ash Backfilling

## Current Land use

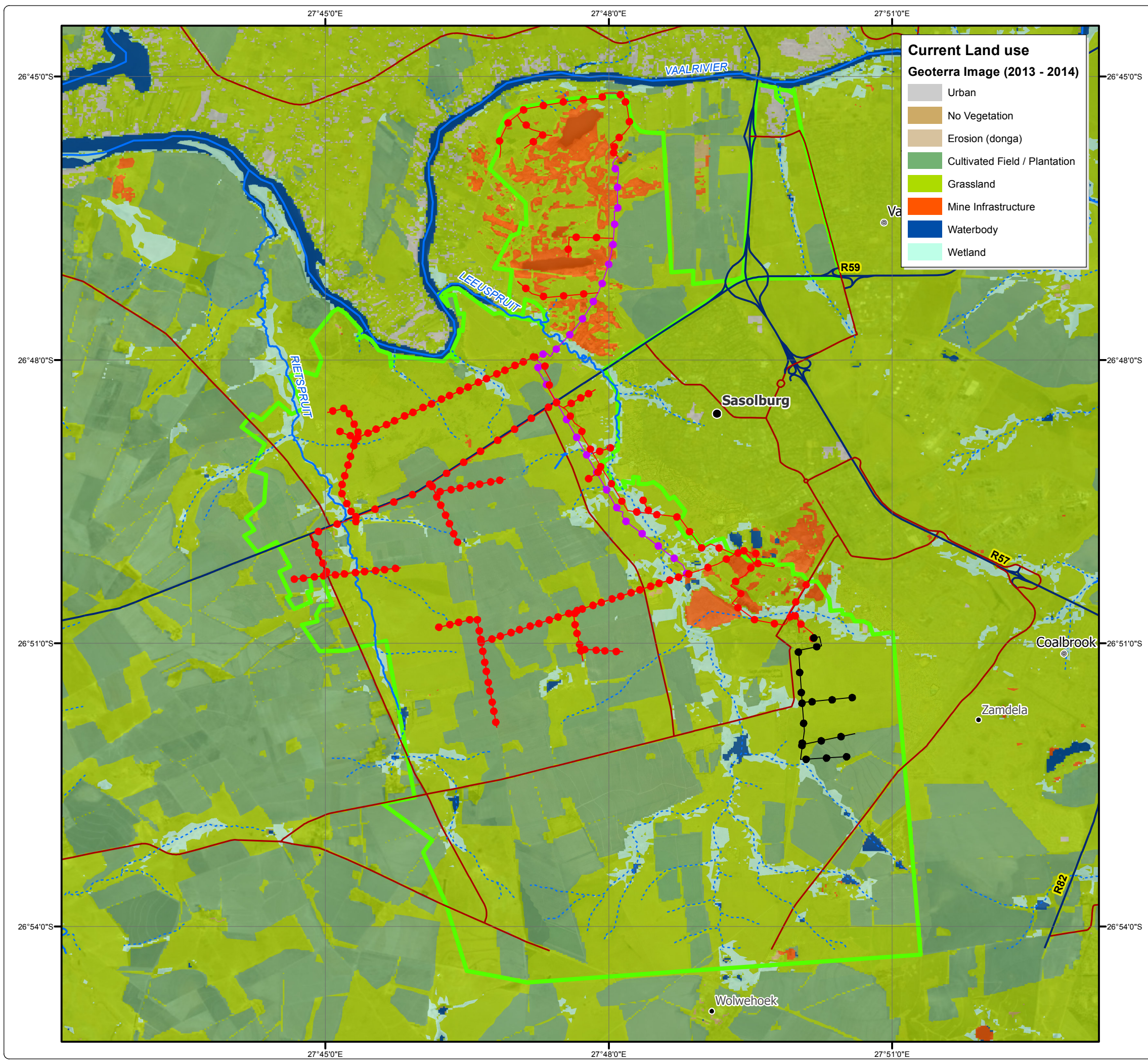
**Current Land use**  
Geoterra Image (2013 - 2014)

- Urban
- No Vegetation
- Erosion (donga)
- Cultivated Field / Plantation
- Grassland
- Mine Infrastructure
- Waterbody
- Wetland

### Legend

- Defunct Sigma Mining Right Boundary
- Major Town
- Other Town
- Settlement
- Perennial River
- Non-Perennial River
- Arterial / National Route
- Secondary Road
- Potential Ash & Water Pipeline
- Existing Ash & Water Pipeline
- New Potential Ash & Water Pipeline

### Pipeline Layout



**DIGBY WELLS**  
ENVIRONMENTAL

• Sustainability • Service • Positive Change • Professionalism • Future Focused • Integrity

Projection: Transverse Mercator      Ref #: ajm.SAS5184.201807.093  
 Datum: WGS 1984                              Revision Number: 1  
 Central Meridian: 27°E                        Date: 08/07/2018

