

Sasol Sigma Ash Backfilling Composite Map

Wetland Delineation

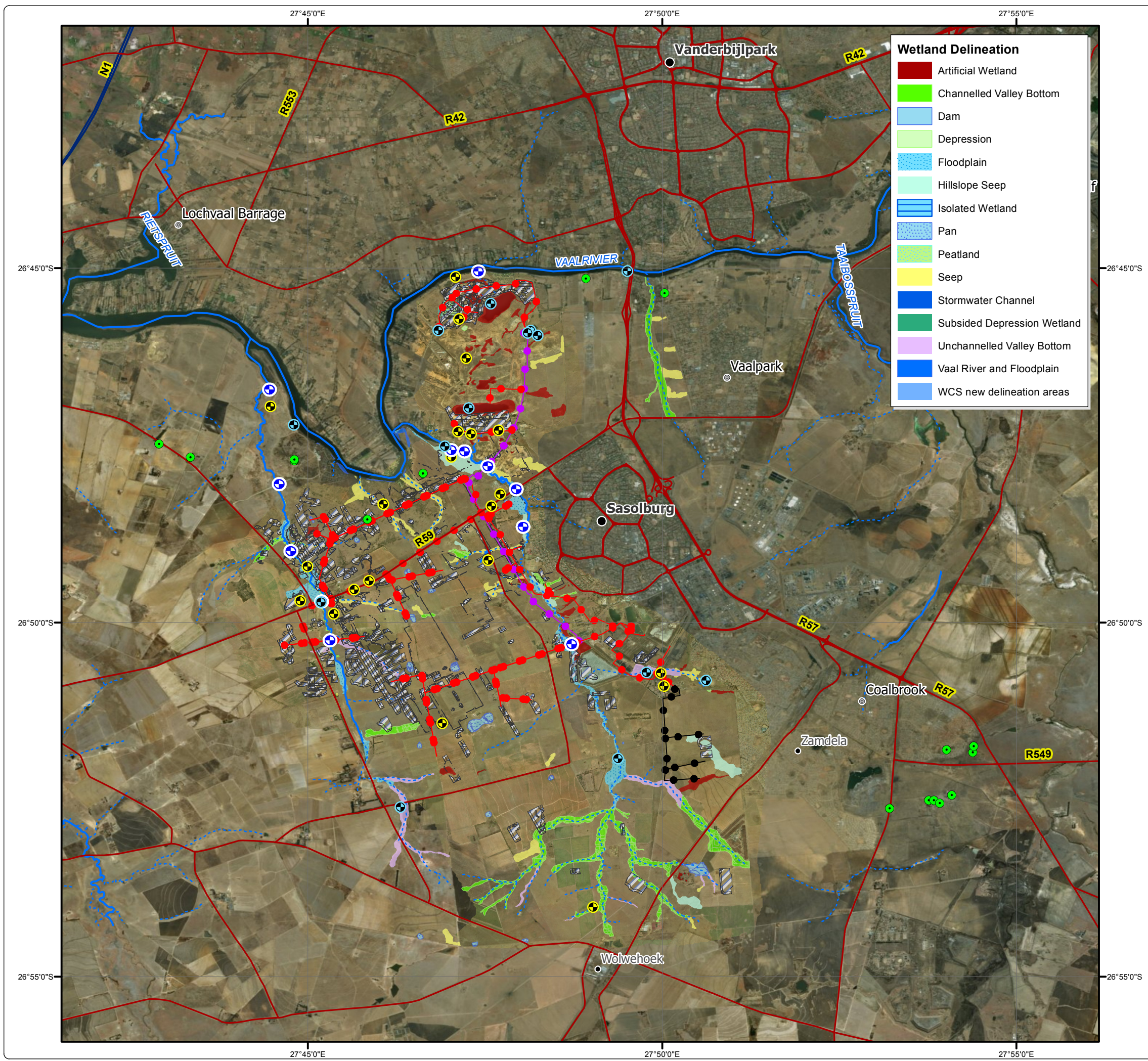
- Artificial Wetland
- Channelled Valley Bottom
- Dam
- Depression
- Floodplain
- Hillslope Seep
- Isolated Wetland
- Pan
- Peatland
- Seep
- Stormwater Channel
- Subsided Depression Wetland
- Unchannelled Valley Bottom
- Vaal River and Floodplain
- WCS new delineation areas


Legend

- Monitoring Point
- Aquatic Sampling Points
- Groundwater Monitoring Borehole
- Heritage Resource
- Major Town
- Other Town
- Settlement
- Main Road
- National Road
- Perennial River
- Non-Perennial River
- Subsidence
- Dam

Pipeline Layout

- Potential Ash & Water Pipeline
- Existing Ash & Water Pipeline
- New Potential Ash & Water Pipeline



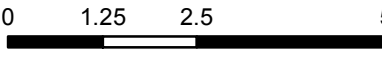


DIGBY WELLS
ENVIRONMENTAL

• Sustainability • Service • Positive Change • Professionalism • Future Focused • Integrity

Projection: Transverse Mercator Ref #: ajm.SAS5184.201807.095
 Datum: WGS 1984 Revision Number: 1
 Central Meridian: 27°E Date: 08/07/2018

N



Kilometres
1:100 000

www.digbywells.com © Digby Wells Environmental