




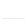





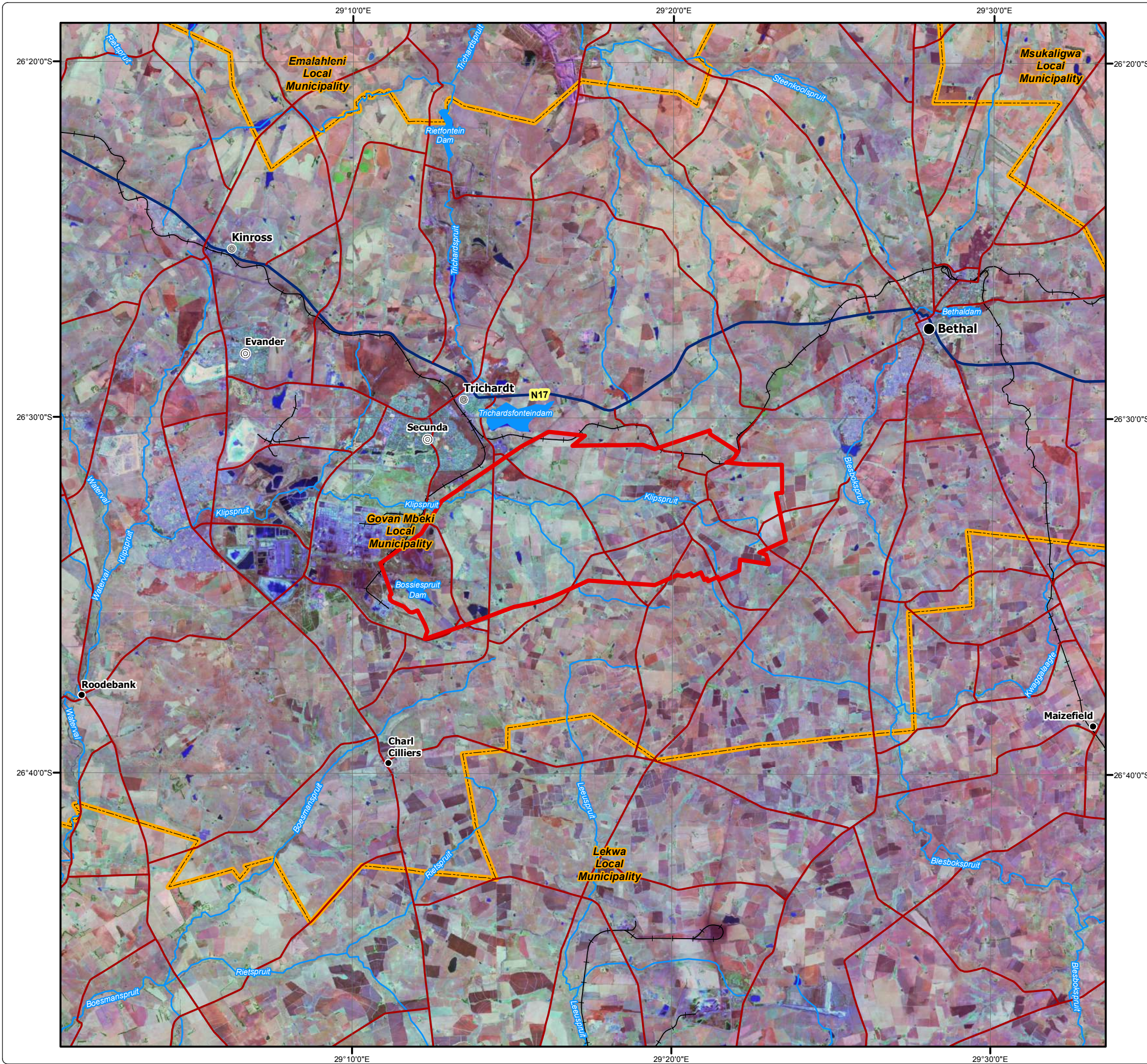


Sasol Twistdraai Road and Conveyor Decommissioning Regional Setting

Legend

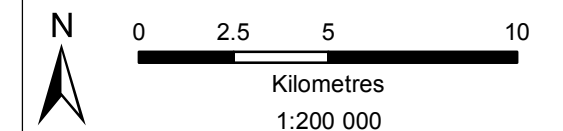
-  Twistdraai EMP Boundary
-  Major Town
-  Secondary Town
-  Other Town
-  Settlement
-  Main Road
-  Arterial / National Route
-  Railway Line
-  Perennial Stream
-  Dam
-  Local Municipality (2016)



DIGBY WELLS
ENVIRONMENTAL

• Sustainability • Service • Positive Change • Professionalism • Future Focused • Integrity

Projection: Transverse Mercator	Ref #: ajm.SAS5544.201907.104
Datum: Cape	Revision Number: 1
Central Meridian: 29°E	Date: 19/07/2019



Sasol Twistdraai Road and Conveyor Decommissioning

Local Setting

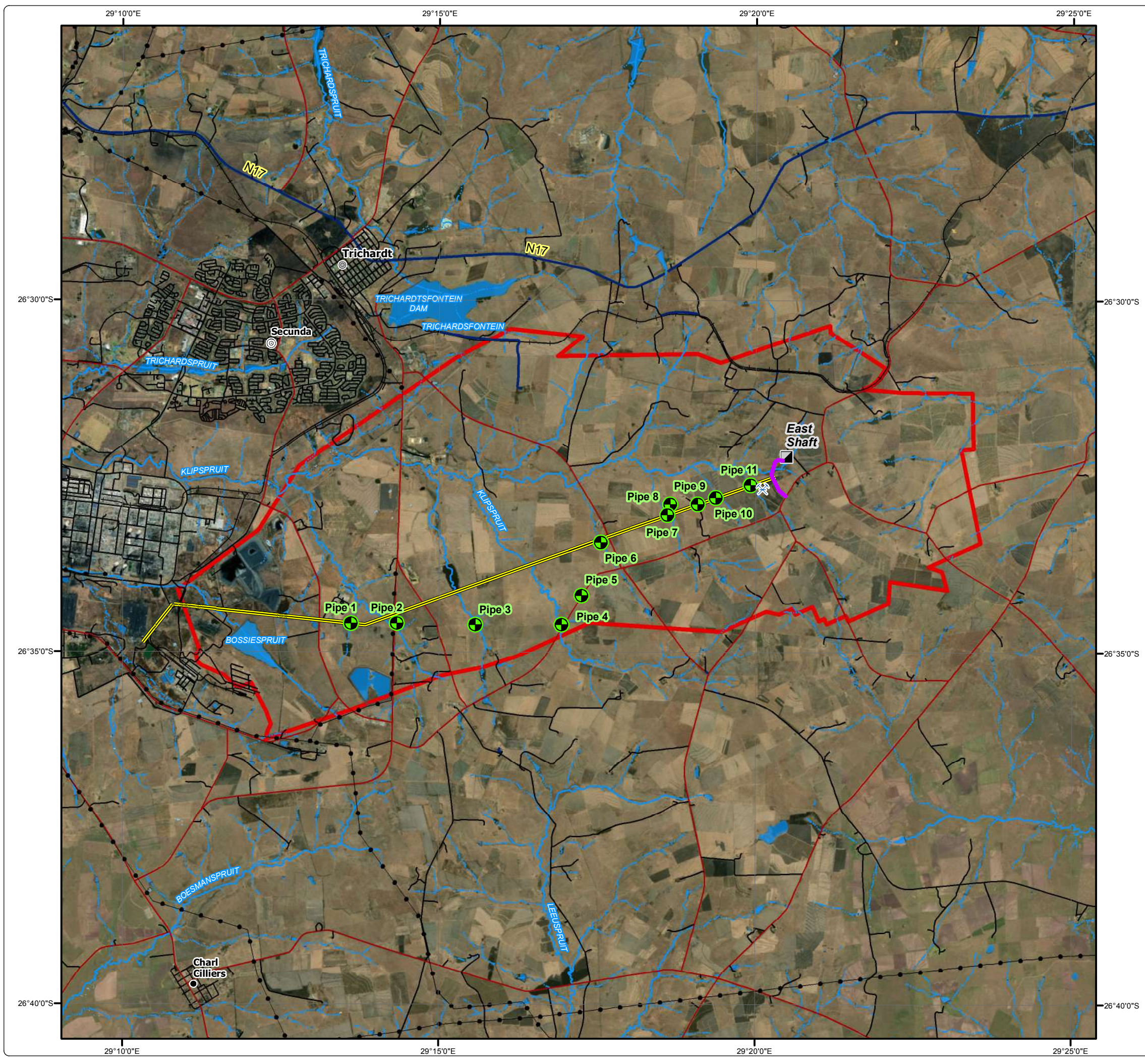
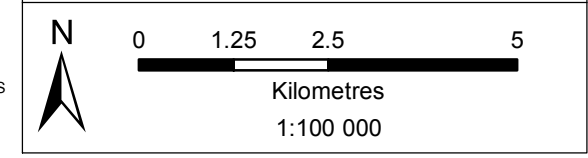
Legend

- Twistdraai EMP Boundary
- Secondary Town
- Other Town
- Settlement
- East Shaft
- Pipeline (Daylight Area)
- Quarry
- East Shaft Access
- Conveyor Servitude (Culverts and Service / Access Road)
- Power Line
- Arterial / National Route
- Main Road
- Minor Road
- Railway Line
- Dam Wall
- Non-Perennial Stream
- Perennial Stream
- Dam / Lake
- Non-Perennial Pan / Stream
- Perennial Pan
- Wetland



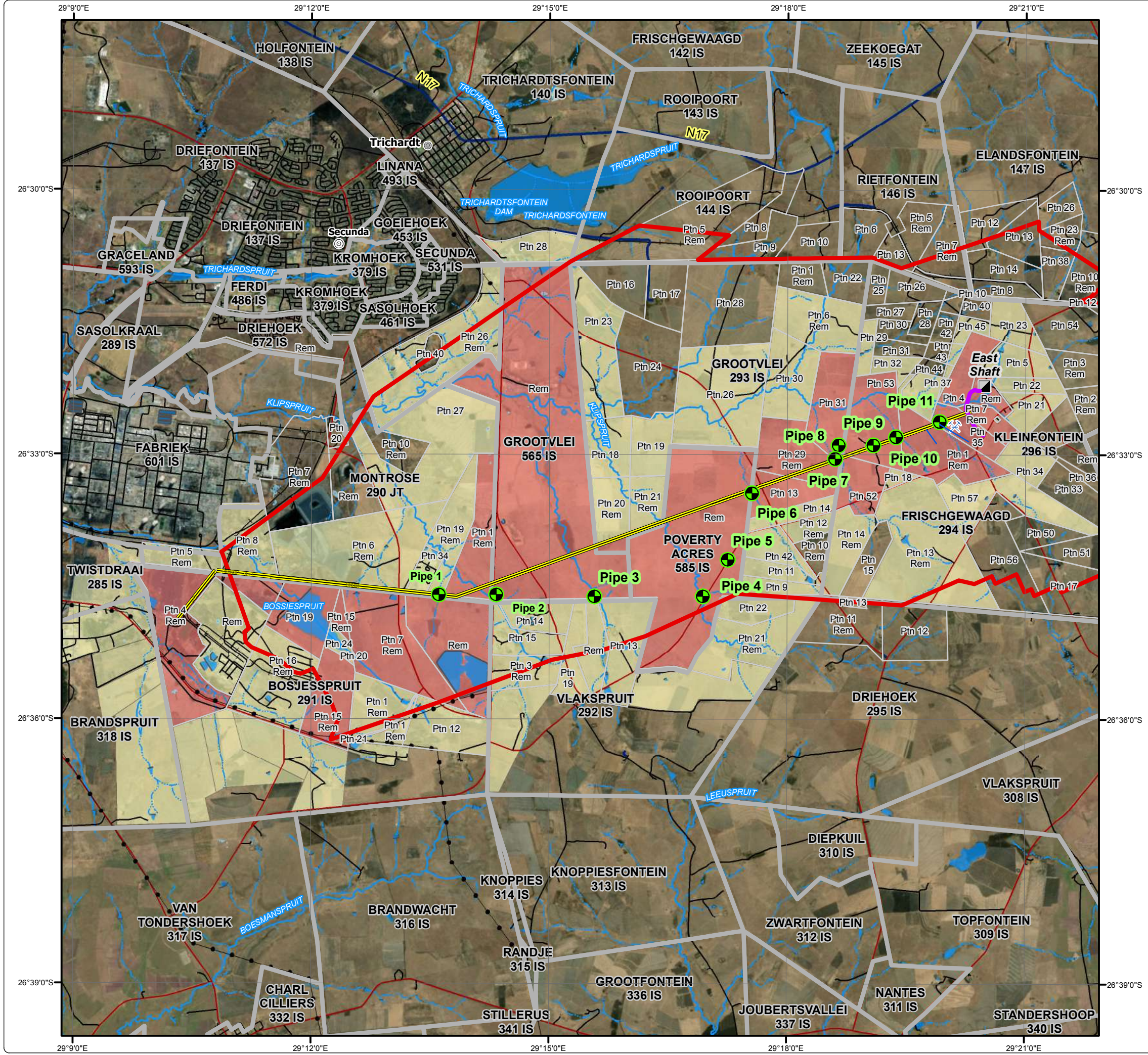
• Sustainability • Service • Positive Change • Professionalism • Future Focused • Integrity

Projection: Transverse Mercator Ref #: ajm.SAS5544.201907.105
Datum: Cape Revision Number: 1
Central Meridian: 29°E Date: 25/01/2019



Sasol Twistdraai Road and Conveyor Decommissioning

Land Tenure



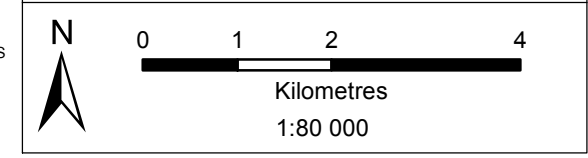
Legend

- Twistdraai EMP Boundary
- Secondary Town
- Other Town
- Infrastructure to be Decommissioned**
- East Shaft
- Pipeline (Daylight Area)
- Quarry
- East Shaft Access Road
- Conveyor Servitude (Culverts and Service / Access Road)
- Power Line
- Arterial / National Route
- Main Road
- Minor Road
- Railway Line
- Dam Wall
- Non-Perennial Stream
- Perennial Stream
- Dam / Lake
- Non-Perennial Pan / Stream
- Perennial Pan
- Wetland
- Parent Farms
- Farm Portions
- Affected Farm portion**
- Directly Affected
- Indirectly Affected



• Sustainability • Service • Positive Change • Professionalism • Future Focused • Integrity

Projection: Transverse Mercator Ref #: ajm.SAS5544.201907.106
Datum: Cape Revision Number: 1
Central Meridian: 29°E Date: 19/07/2019



Sasol Twistdraai Road and Conveyor Decommissioning Water Crossing Points

Legend

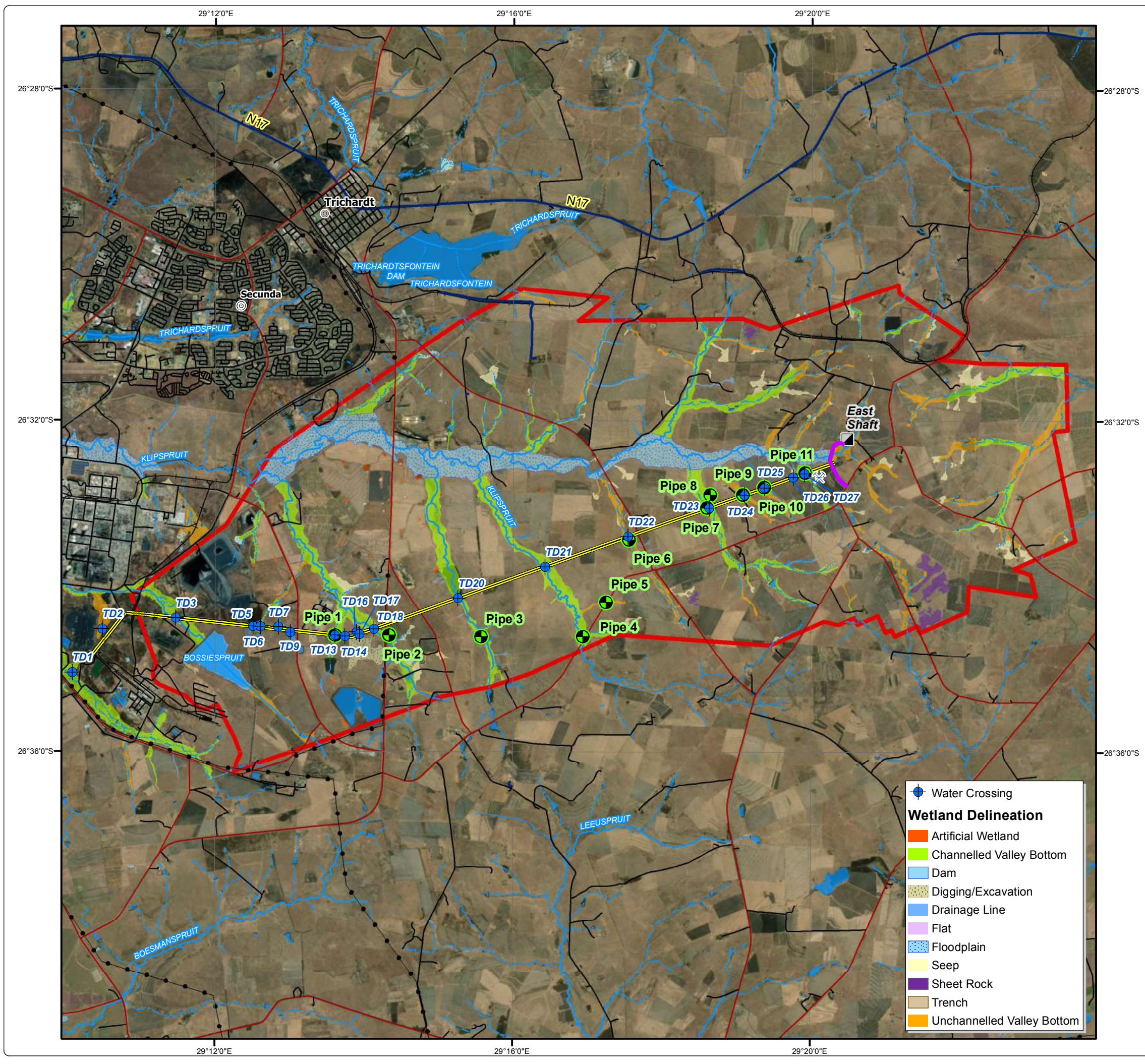
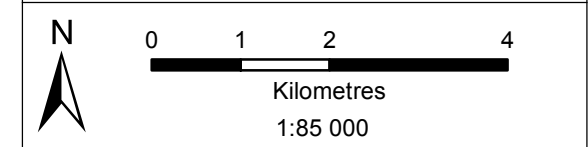
- Twistdraai EMP Boundary
- Secondary Town
- Other Town
- Infrastructure to be Decommissioned**
- East Shaft
- Pipeline (Daylight Area)
- Quarry
- East Shaft Access Road
- Conveyor Servitude (Culverts and Service / Access Road)
- Power Line
- Arterial / National Route
- Main Road
- Minor Road
- Railway Line
- Dam Wall
- Non-Perennial Stream
- Perennial Stream
- Dam / Lake
- Non-Perennial Pan / Stream
- Perennial Pan
- Wetland

- Water Crossing
- Wetland Delineation**
- Artificial Wetland
- Channelled Valley Bottom
- Dam
- Digging/Excavation
- Drainage Line
- Flat
- Floodplain
- Seep
- Sheet Rock
- Trench
- Unchannelled Valley Bottom



• Sustainability • Service • Positive Change • Professionalism • Future Focused • Integrity

Projection: Transverse Mercator Ref #: ajm.SAS5544.201907.107
Datum: Cape Revision Number: 1
Central Meridian: 29°E Date: 19/07/2019



Sasol Twistdraai Road and Conveyor Decommissioning

NFEPA Wetlands

Legend

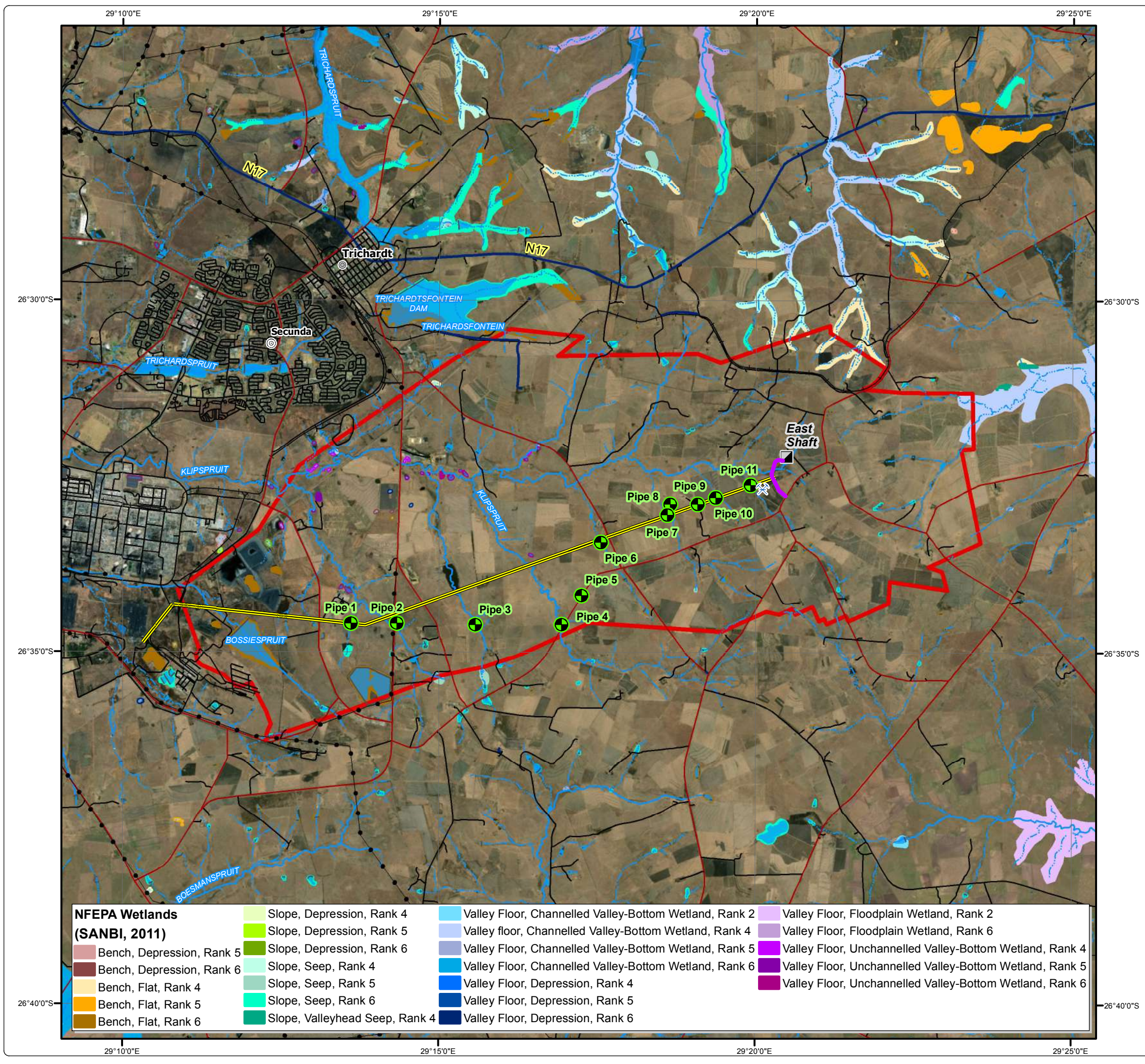
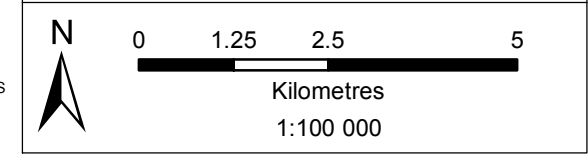
- Twistdraai EMP Boundary
- Secondary Town
- Other Town
- Settlement
- East Shaft
- Pipeline (Daylight)
- Quarry
- East Shaft Access
- Conveyor Servitude (Culverts and Service / Access Road)
- Power Line
- Arterial / National Route
- Main Road
- Minor Road
- Railway Line
- Dam Wall
- Non-Perennial Stream
- Perennial Stream
- Dam / Lake
- Non-Perennial Pan / Stream
- Perennial Pan
- Wetland

NFEPA Wetlands (SANBI, 2011)		
 Bench, Depression, Rank 5	 Slope, Depression, Rank 4	 Valley Floor, Channelled Valley-Bottom Wetland, Rank 2
 Bench, Depression, Rank 6	 Slope, Depression, Rank 5	 Valley floor, Channelled Valley-Bottom Wetland, Rank 4
 Bench, Flat, Rank 4	 Slope, Depression, Rank 6	 Valley Floor, Channelled Valley-Bottom Wetland, Rank 5
 Bench, Flat, Rank 5	 Slope, Seep, Rank 4	 Valley Floor, Channelled Valley-Bottom Wetland, Rank 6
 Bench, Flat, Rank 6	 Slope, Seep, Rank 5	 Valley Floor, Depression, Rank 4
	 Slope, Seep, Rank 6	 Valley Floor, Depression, Rank 5
	 Slope, Valleyhead Seep, Rank 4	 Valley Floor, Depression, Rank 6
		 Valley Floor, Floodplain Wetland, Rank 2
		 Valley Floor, Floodplain Wetland, Rank 6
		 Valley Floor, Unchannelled Valley-Bottom Wetland, Rank 4
		 Valley Floor, Unchannelled Valley-Bottom Wetland, Rank 5
		 Valley Floor, Unchannelled Valley-Bottom Wetland, Rank 6



• Sustainability • Service • Positive Change • Professionalism • Future Focused • Integrity

Projection: Transverse Mercator Ref #: ajm.SAS5544.201907.108
 Datum: Cape Revision Number: 1
 Central Meridian: 29°E Date: 25/01/2019



Sasol Twistdraai Road and Conveyor Decommissioning Mpumalanga Biodiversity Plan

Legend

- Twistdraai EMP Boundary
- Secondary Town
- Other Town
- Settlement
- East Shaft
- Pipeline (Daylight)
- Quarry
- East Shaft Access
- Conveyor Servitude (Culverts and Service / Access Road)
- Power Line
- Arterial / National Route
- Main Road
- Minor Road
- Railway Line
- Dam Wall
- Non-Perennial Stream
- Perennial Stream
- Dam / Lake
- Non-Perennial Pan / Stream
- Perennial Pan
- Wetland

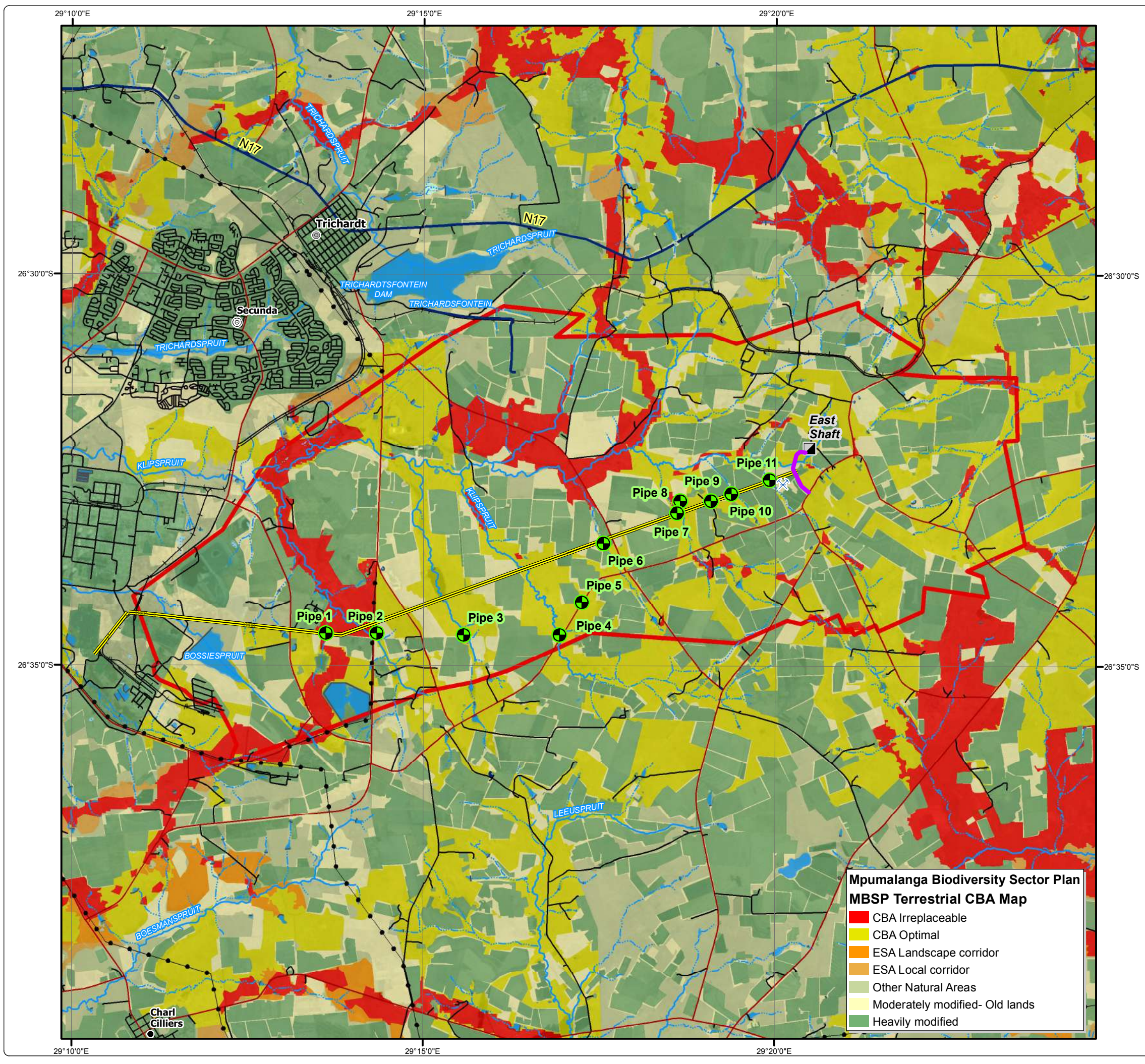
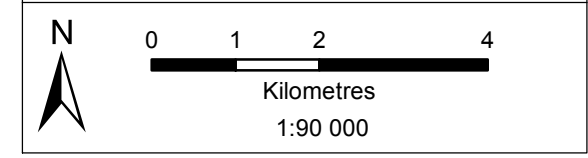
**Mpumalanga Biodiversity Sector Plan
MBSP Terrestrial CBA Map**

- CBA Irreplaceable
- CBA Optimal
- ESA Landscape corridor
- ESA Local corridor
- Other Natural Areas
- Moderately modified- Old lands
- Heavily modified



• Sustainability • Service • Positive Change • Professionalism • Future Focused • Integrity

Projection: Transverse Mercator Ref #: ajm.SAS5544.201907.109
 Datum: Cape Revision Number: 1
 Central Meridian: 29°E Date: 25/01/2019



Sasol Twistdraai Road and Conveyor Decommissioning

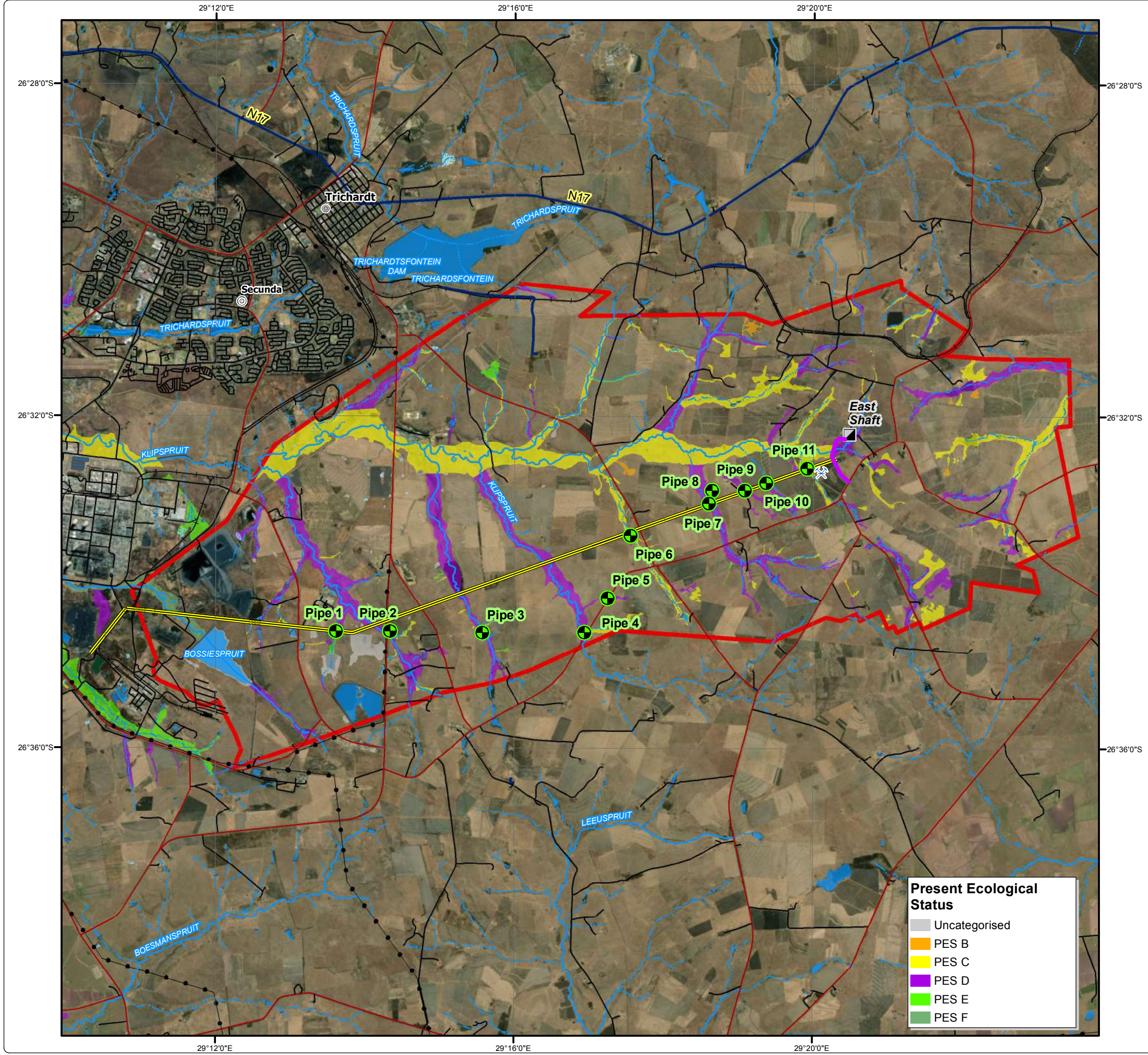
Present Ecological Status


Legend

- Twistdraai EMP Boundary
- Secondary Town
- Other Town
- Infrastructure to be Decommissioned**
- East Shaft
- Pipeline (Daylight Area)
- Quarry
- East Shaft Access Road
- Conveyor Servitude (Culverts and Service / Access Road)
- Power Line
- Arterial / National Route
- Main Road
- Minor Road
- Railway Line
- Dam Wall
- Non-Perennial Stream
- Perennial Stream
- Dam / Lake
- Non-Perennial Pan / Stream
- Perennial Pan
- Wetland

Present Ecological Status

- Uncategorised
- PES B
- PES C
- PES D
- PES E
- PES F


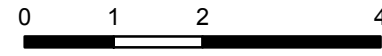




DIGBY WELLS
ENVIRONMENTAL

• Sustainability • Service • Positive Change • Professionalism • Future Focused • Integrity

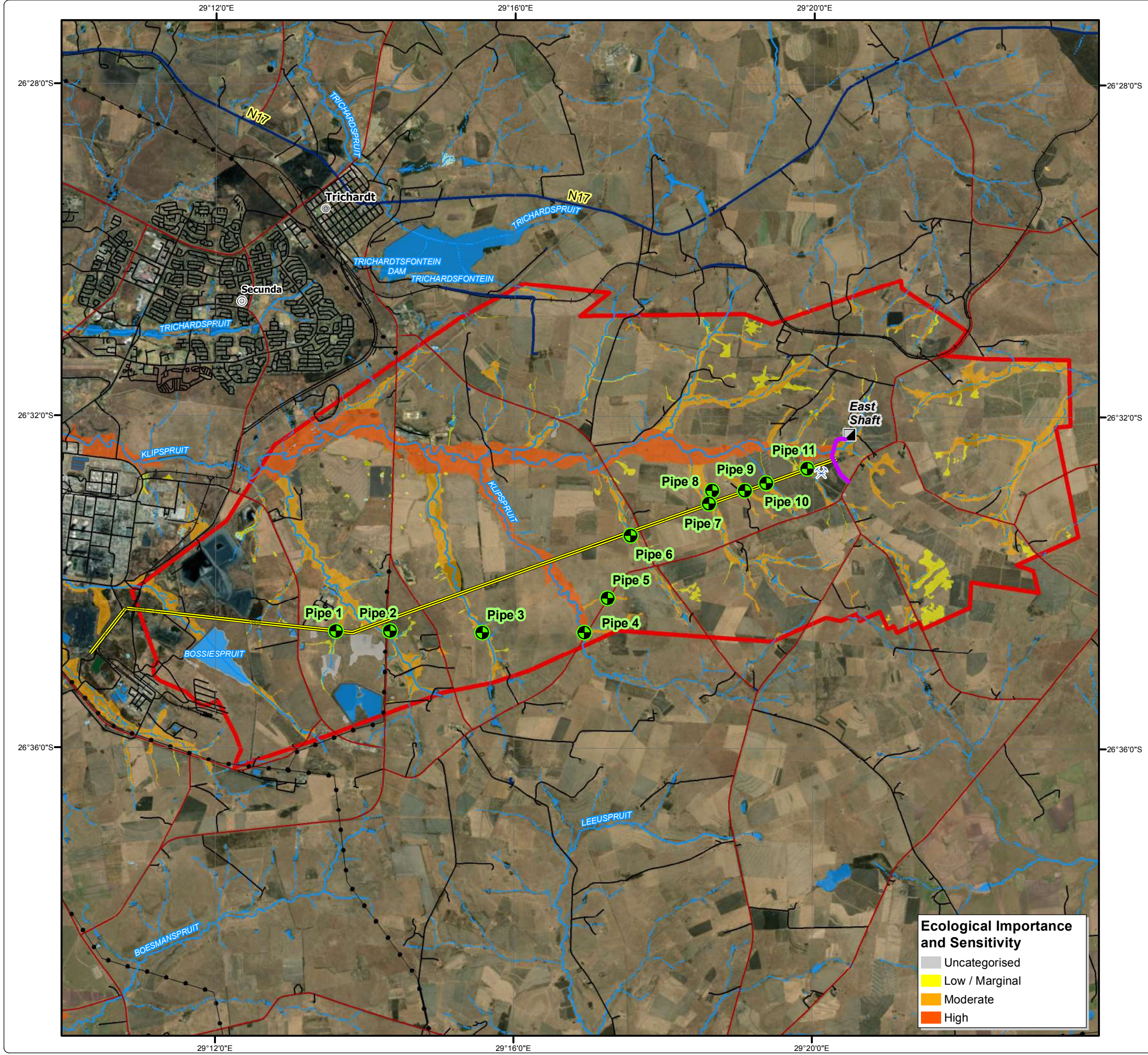
Projection: Transverse Mercator Ref #: ajm.SAS5544.201907.110
Datum: Cape Revision Number: 1
Central Meridian: 29°E Date: 19/07/2019

Kilometres
1:85 000

www.digbywells.com © Digby Wells Environmental

Sasol Twistdraai Road and Conveyor Decommissioning Ecological Importance and Sensitivity




Legend

- Twistdraai EMP Boundary
- Secondary Town
- Other Town
- Infrastructure to be Decommissioned**
- East Shaft
- Pipeline (Daylight Area)
- Quarry
- East Shaft Access Road
- Conveyor Servitude (Culverts and Service / Access Road)
- Power Line
- Arterial / National Route
- Main Road
- Minor Road
- Railway Line
- Dam Wall
- Non-Perennial Stream
- Perennial Stream
- Dam / Lake
- Non-Perennial Pan / Stream
- Perennial Pan
- Wetland

Ecological Importance and Sensitivity


- Uncategorised
- Low / Marginal
- Moderate
- High



DIGBY WELLS
ENVIRONMENTAL

• Sustainability • Service • Positive Change • Professionalism • Future Focused • Integrity

Projection: Transverse Mercator	Ref #: ajm.SAS5544.201907.111
Datum: Cape	Revision Number: 1
Central Meridian: 29°E	Date: 19/07/2019



0 1 2 4
Kilometres
1:85 000

www.digbywells.com © Digby Wells Environmental

Sasol Twistdraai Road and Conveyor Decommissioning Surface Water Monitoring Locations

Legend

- Twistdraai EMP Boundary
- Secondary Town
- Other Town
- Infrastructure to be Decommissioned**
- East Shaft
- Pipeline (Daylight Area)
- Quarry
- East Shaft Access Road
- Conveyor Servitude (Culverts and Service / Access Road)
- Power Line
- Arterial / National Route
- Main Road
- Minor Road
- Railway Line
- Dam Wall
- Non-Perennial Stream
- Perennial Stream
- Dam / Lake
- Non-Perennial Pan / Stream
- Perennial Pan
- Wetland

Surface Water Monitoring Points

- Existing Monitoring Point
- Proposed Monitoring Point

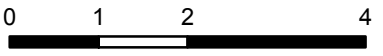


DIGBY WELLS
ENVIRONMENTAL

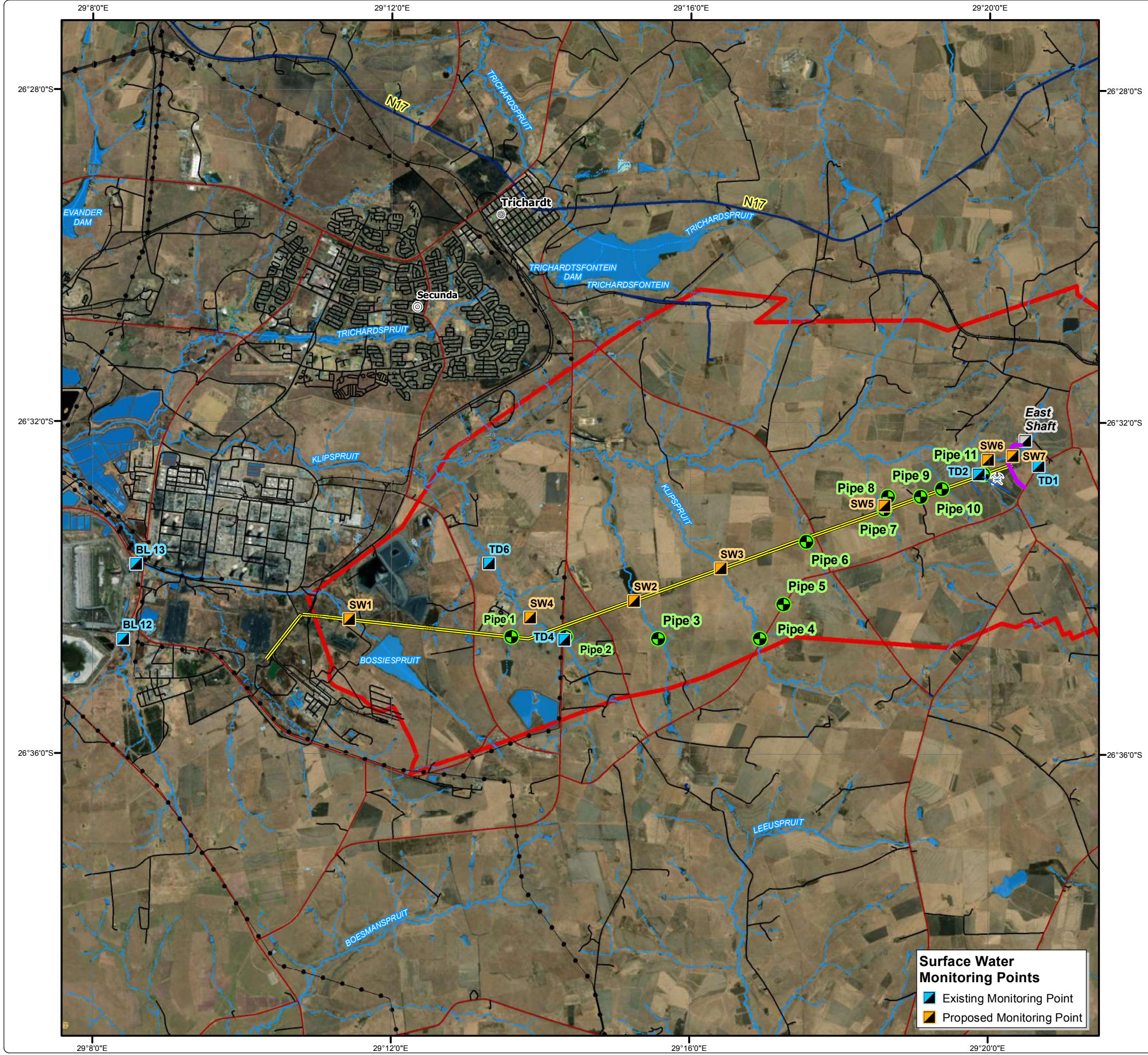
• Sustainability • Service • Positive Change • Professionalism • Future Focused • Integrity

Projection: Transverse Mercator Ref #: ajm.SAS5544.201907.113
 Datum: Cape Revision Number: 1
 Central Meridian: 29°E Date: 19/07/2019

N



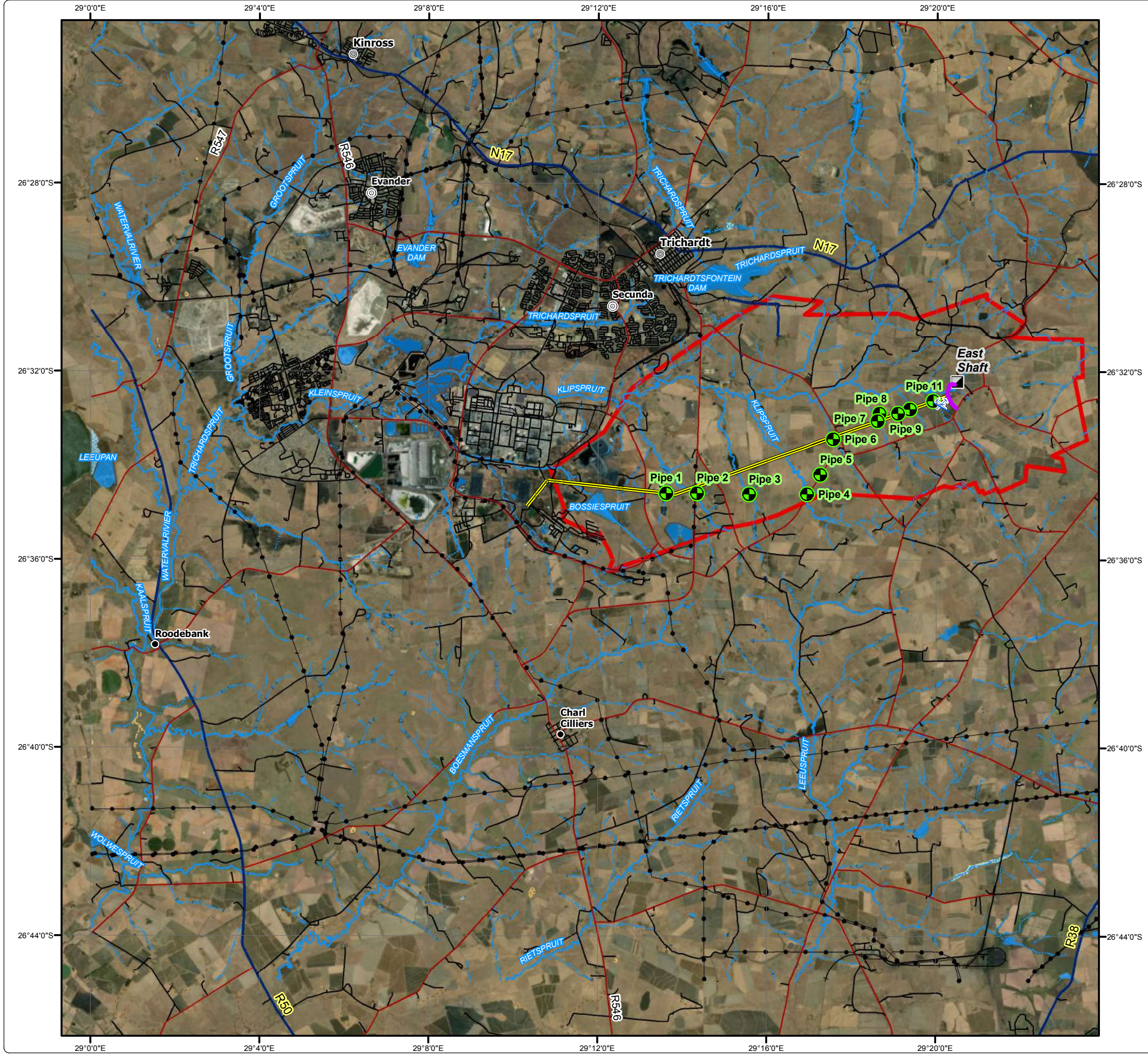
Kilometres
1:85 000



Sasol Twistdraai Road and Conveyor Decommissioning Watercourse Associated with Project Area

Legend

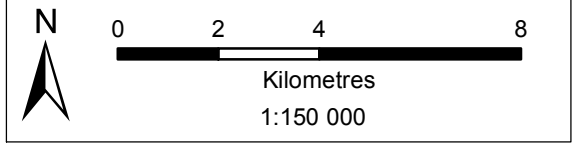
- Twistdraai EMP Boundary
- Secondary Town
- Other Town
- Settlement
- Infrastructure to be Decommissioned**
- East Shaft
- Pipeline (Daylight Area)
- Quarry
- East Shaft Access Road
- Conveyor Servitude (Culverts and Service / Access Road)
- Power Line
- Arterial / National Route
- Main Road
- Minor Road
- Track
- Railway Line
- Dam Wall
- Non-Perennial Stream
- Perennial Stream
- Dam / Lake
- Non-Perennial Pan / Stream
- Perennial Pan
- Wetland




DIGBY WELLS
ENVIRONMENTAL

• Sustainability • Service • Positive Change • Professionalism • Future Focused • Integrity

Projection: Transverse Mercator Ref #: ajm.SAS5544.201907.114
Datum: Cape Revision Number: 1
Central Meridian: 29°E Date: 19/07/2019



Sasol Twistdraai Road and Conveyor Decommissioning Aquatic Ecology Sampling Locations

Legend

- Twistdraai EMP Boundary
- Secondary Town
- Other Town
- Infrastructure to be Decommissioned**
- East Shaft
- Pipeline (Daylight Area)
- Quarry
- East Shaft Access Road
- Conveyor Servitude (Culverts and Service / Access Road)
- Power Line
- Arterial / National Route
- Main Road
- Minor Road
- Railway Line
- Dam Wall
- Non-Perennial Stream
- Perennial Stream
- Dam / Lake
- Non-Perennial Pan / Stream
- Perennial Pan
- Wetland

sampling_points

Sampling Points

- Tributary Sampling Point
- Drainage Line Sampling Point
- Wetland Sampling Point

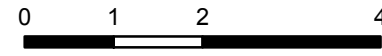


DIGBY WELLS
ENVIRONMENTAL

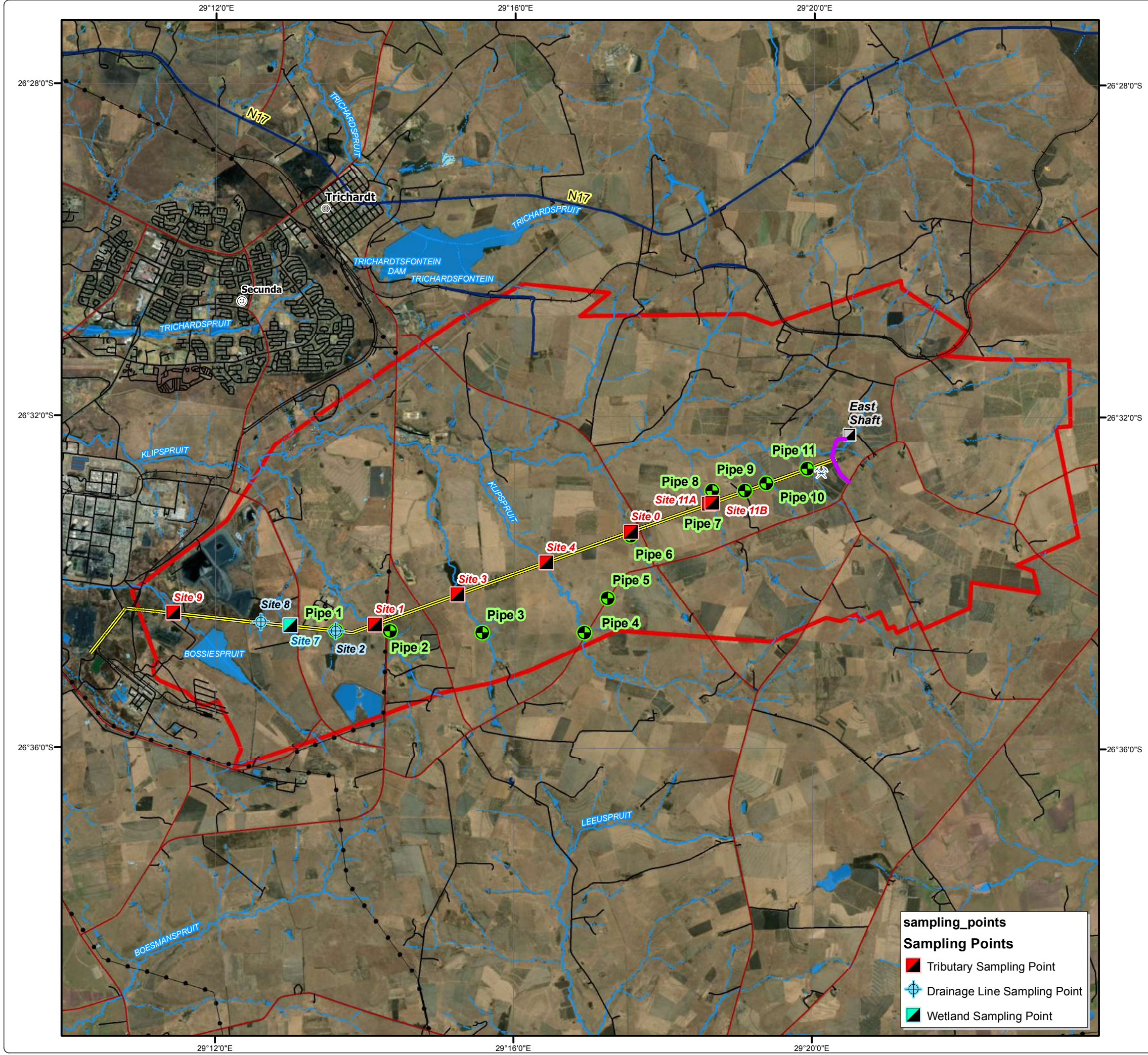
• Sustainability • Service • Positive Change • Professionalism • Future Focused • Integrity

Projection: Transverse Mercator Ref #: ajm.SAS5544.201907.115
 Datum: Cape Revision Number: 1
 Central Meridian: 29°E Date: 19/07/2019

N










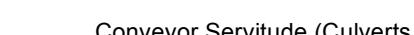
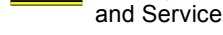
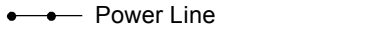




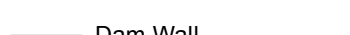


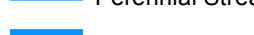


Kilometres
1:85 000



Sasol Twistdraai Road and Conveyor Decommissioning Identified Heritage Resources

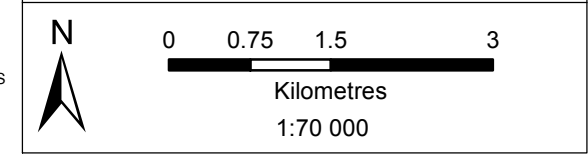
Legend

-  Twistdraai EMP Boundary
 -  Secondary Town
 -  Other Town
 -  Identified Heritage Resource
 -  Field Track
- ### Infrastructure to be Decommissioned
-  East Shaft
 -  Pipeline (Daylight Area)
 -  Quarry
 -  East Shaft Access Road
 -  Conveyor Servitude (Culverts and Service / Access Road)
 -  Power Line
 -  Arterial / National Route
 -  Main Road
 -  Minor Road
 -  Railway Line
 -  Dam Wall
 -  Non-Perennial Stream
 -  Perennial Stream
 -  Dam / Lake
 -  Perennial Pan



• Sustainability • Service • Positive Change • Professionalism • Future Focused • Integrity

Projection: Transverse Mercator Ref #: ajm.SAS5544.201907.116
 Datum: Cape Revision Number: 1
 Central Meridian: 29°E Date: 19/07/2019



Sasol Twistdraai Road and Conveyor Decommissioning

Land Use

Legend

- Twistdraai EMP Boundary
- Secondary Town
- Other Town
- Infrastructure to be Decommissioned**
- East Shaft
- Pipeline (Daylight Area)
- Quarry
- East Shaft Access Road
- Conveyor Servitude (Culverts and Service / Access Road)
- Power Line
- Arterial / National Route
- Main Road
- Minor Road
- Railway Line
- Dam Wall
- Non-Perennial Stream
- Perennial Stream
- Dam / Lake
- Non-Perennial Pan / Stream
- Perennial Pan
- Wetland

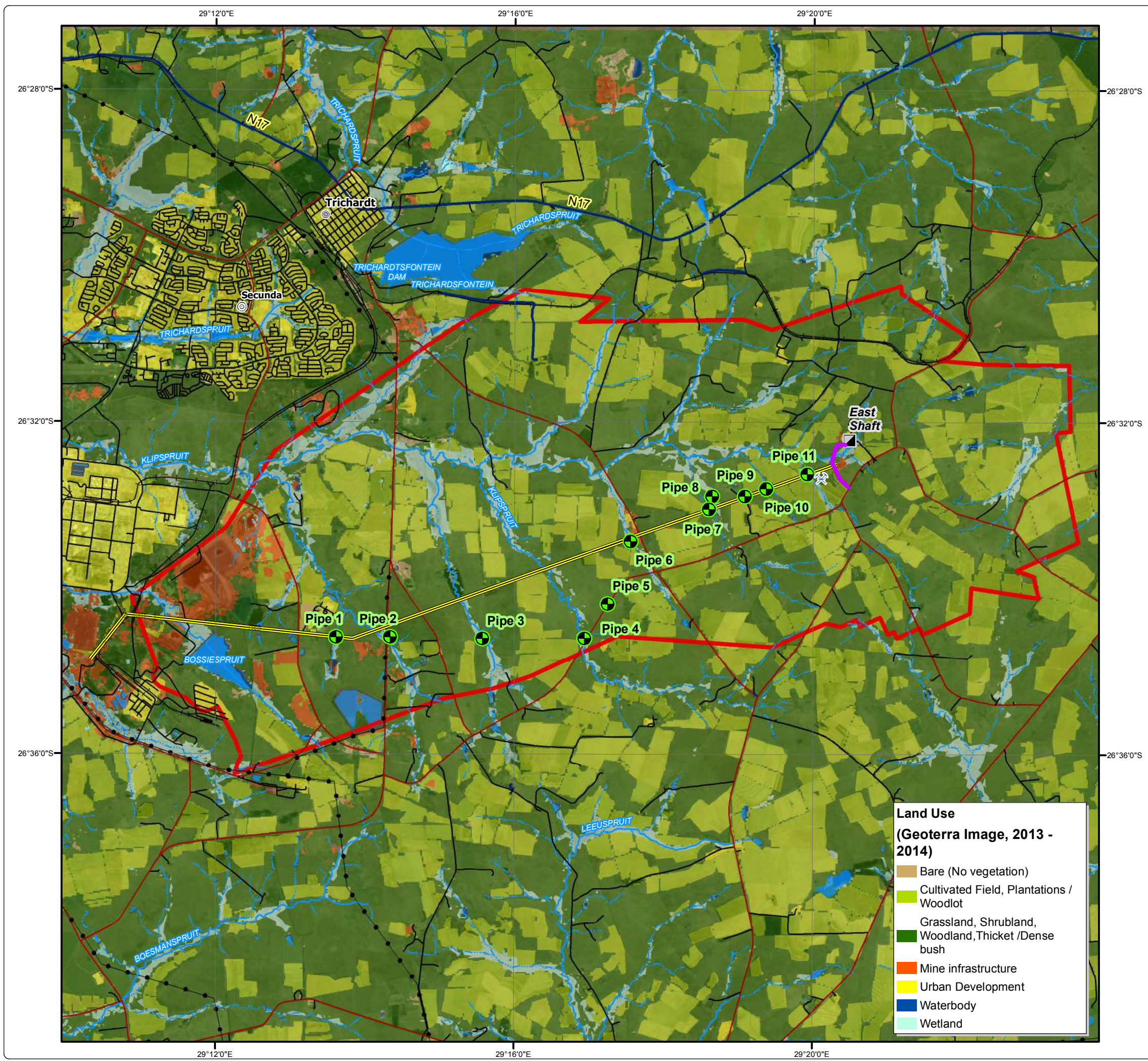
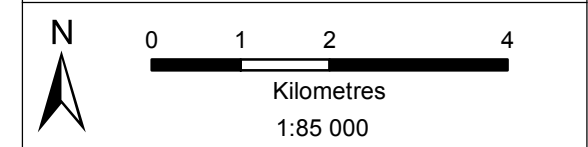
Land Use
(Geoterra Image, 2013 - 2014)

- Bare (No vegetation)
- Cultivated Field, Plantations / Woodlot
- Grassland, Shrubland, Woodland, Thicket / Dense bush
- Mine infrastructure
- Urban Development
- Waterbody
- Wetland



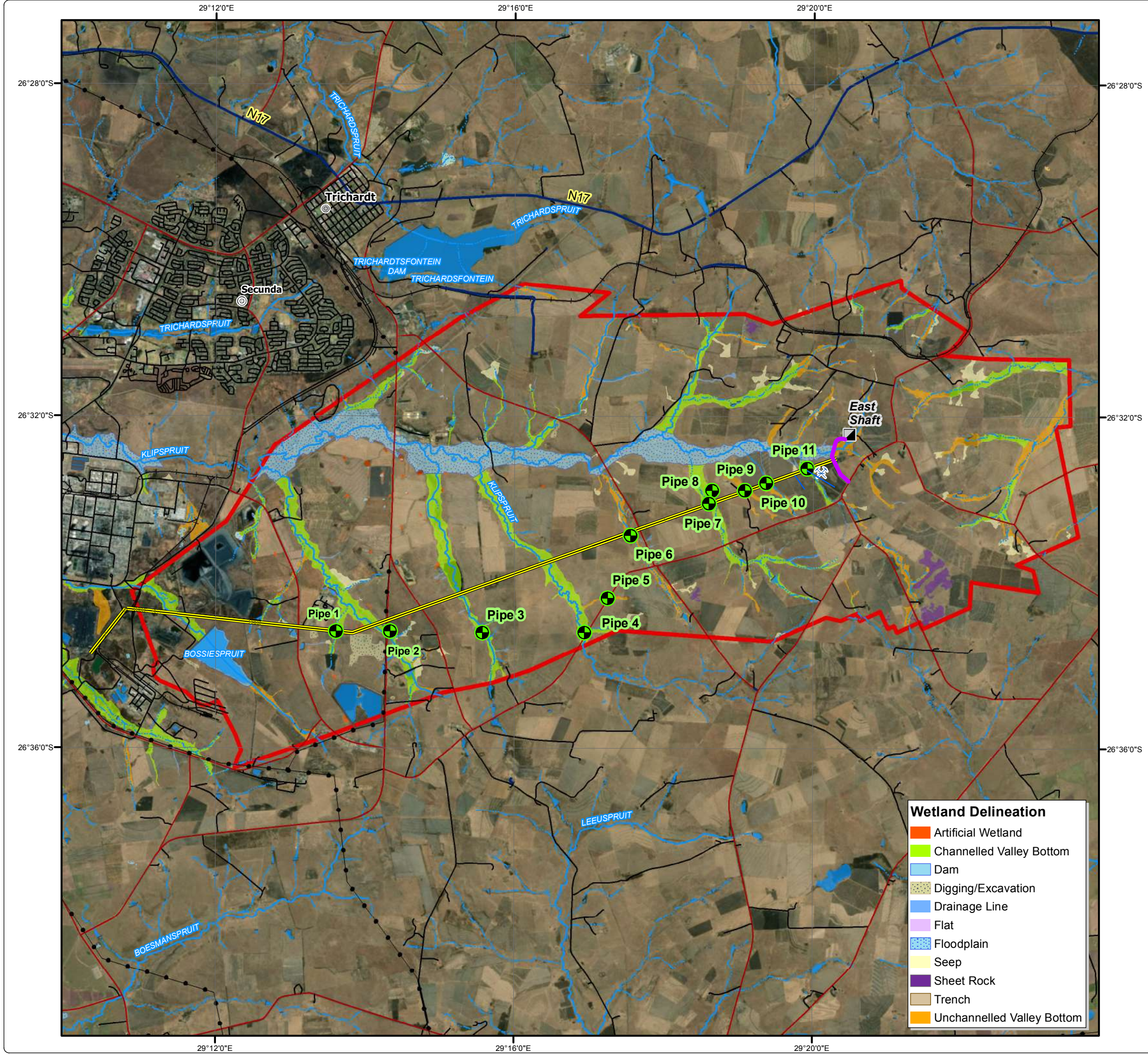
• Sustainability • Service • Positive Change • Professionalism • Future Focused • Integrity

Projection: Transverse Mercator Ref #: ajm.SAS5544.201907.117
 Datum: Cape Revision Number: 1
 Central Meridian: 29°E Date: 19/07/2019



Sasol Twistdraai Road and Conveyor Decommissioning

Wetland Delineation



Legend

- Twistdraai EMP Boundary
- Secondary Town
- Other Town
- Infrastructure to be Decommissioned**
- East Shaft
- Pipeline (Daylight Area)
- Quarry
- East Shaft Access Road
- Conveyor Servitude (Culverts and Service / Access Road)
- Power Line
- Arterial / National Route
- Main Road
- Minor Road
- Railway Line
- Dam Wall
- Non-Perennial Stream
- Perennial Stream
- Dam / Lake
- Non-Perennial Pan / Stream
- Perennial Pan
- Wetland

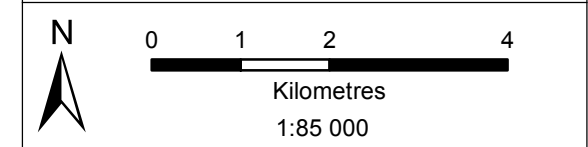
Wetland Delineation

- Artificial Wetland
- Channelled Valley Bottom
- Dam
- Digging/Excavation
- Drainage Line
- Flat
- Floodplain
- Seep
- Sheet Rock
- Trench
- Unchannelled Valley Bottom



• Sustainability • Service • Positive Change • Professionalism • Future Focused • Integrity

Projection: Transverse Mercator Ref #: ajm.SAS5544.201907.118
Datum: Cape Revision Number: 1
Central Meridian: 29°E Date: 19/07/2019




Sasol Twistdraai Road and Conveyor Decommissioning Infrastructure to be Decommissioned

Legend

- Twistdraai EMP Boundary
- Secondary Town
- Other Town
- Infrastructure to be Decommissioned**
- East Shaft
- Pipeline (Daylight Area)
- Quarry
- East Shaft Access Road
- Conveyor Servitude (Culverts and Service / Access Road)
- Power Line
- Arterial / National Route
- Main Road
- Minor Road
- Railway Line
- Dam Wall
- Non-Perennial Stream
- Perennial Stream
- Dam / Lake
- Non-Perennial Pan / Stream
- Perennial Pan
- Wetland






DIGBY WELLS
ENVIRONMENTAL

• Sustainability • Service • Positive Change • Professionalism • Future Focused • Integrity

Projection: Transverse Mercator	Ref #: ajm.SAS5544.201907.119
Datum: Cape	Revision Number: 1
Central Meridian: 29°E	Date: 19/07/2019



N

0 1 2 4

Kilometres

1:85 000

www.digbywells.com © Digby Wells Environmental

Sasol Twistdraai Road and Conveyor Decommissioning

Composite Map

Legend

- Twistdraai EMP Boundary
- Secondary Town
- Other Town
- Infrastructure to be Decommissioned**
- East Shaft
- Pipeline (Daylight Area)
- Quarry
- East Shaft Access Road
- Conveyor Servitude (Culverts and Service / Access Road)
- Power Line
- Arterial / National Route
- Main Road
- Minor Road
- Railway Line
- Dam Wall
- Non-Perennial Stream
- Perennial Stream
- Dam / Lake
- Non-Perennial Pan / Stream
- Perennial Pan
- Wetland

Composite Layers

- Identified Heritage Resource
- Soil Sampling Point
- Surface Water Monitoring Points**
- Existing Monitoring Point
- Proposed Monitoring Point
- Wetland Crossing
- Aquatic Sampling Points**
- Tributary Sampling Point
- Drainage Line Sampling Point
- Wetland Sampling Point
- Wetland Delineation**
- Artificial Wetland
- Channelled Valley Bottom
- Dam
- Depression
- Digging/Excavation
- Drainage Line
- Flat
- Floodplain
- Seep
- Sheet Rock
- Unchannelled Valley Bottom

