

Figure 1.1: Locality map showing the area proposed for the establishment of the Anglo African Metals Zero Waste Recovery Solution

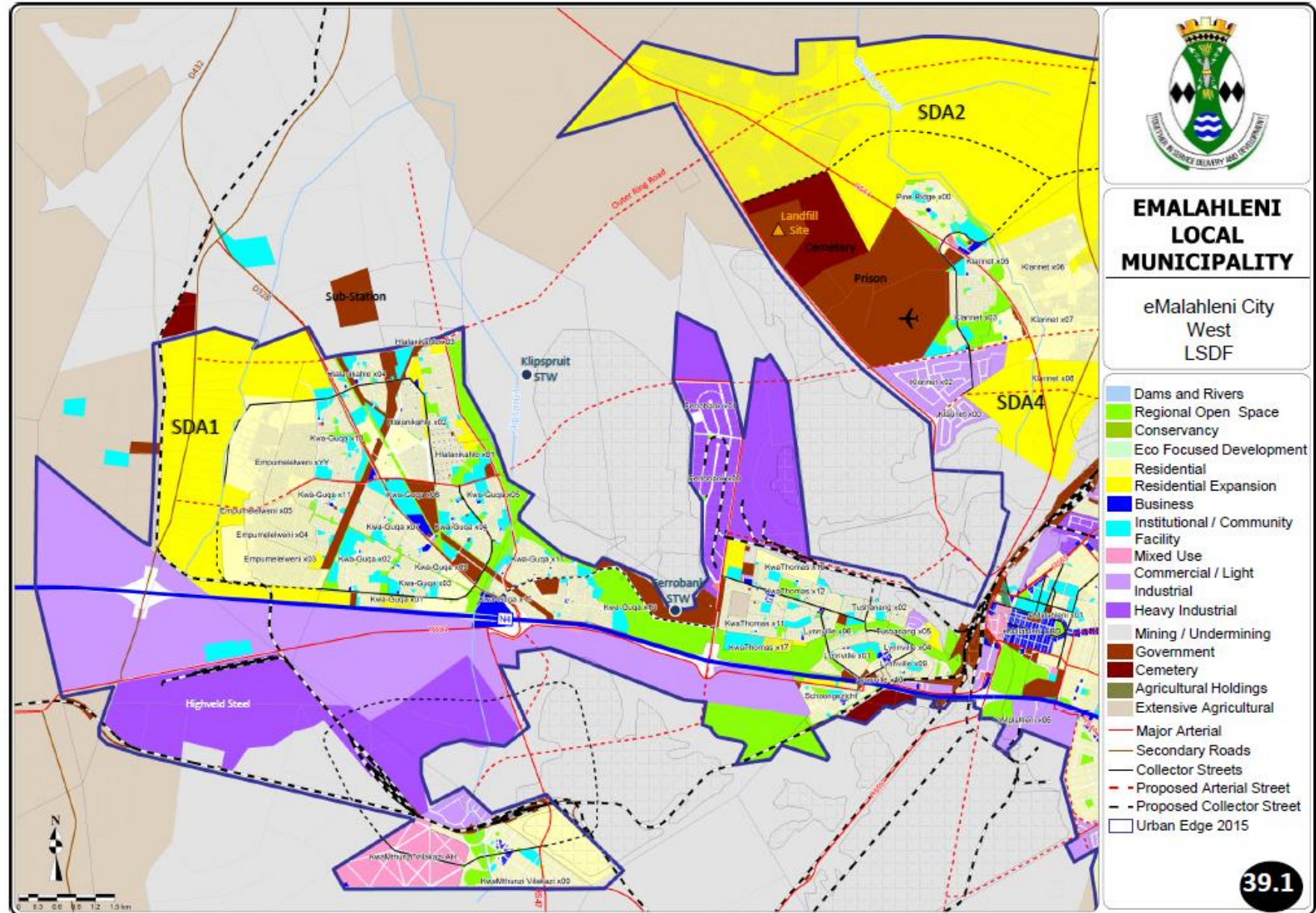


Figure 3.3: Local SDF (Emalahleni LM, 2015)

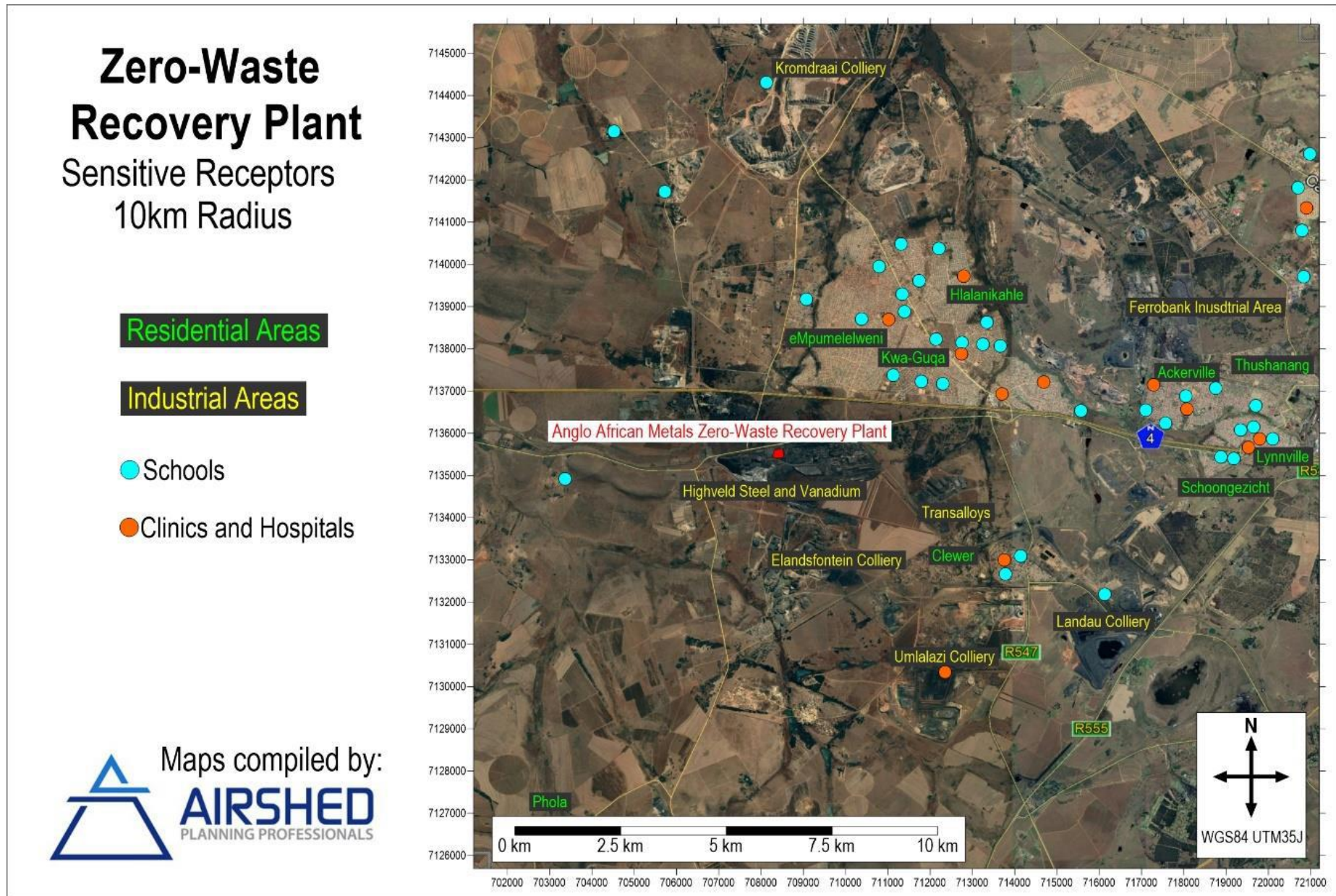


Figure 6.4: Sensitive receptors within 10km of the project site (air quality)



Figure 6.4: Extract of the 1:250 000 2528 Pretoria Geological Map (1978) (Council of Geoscience) indicating the surface geology of the proposed development.

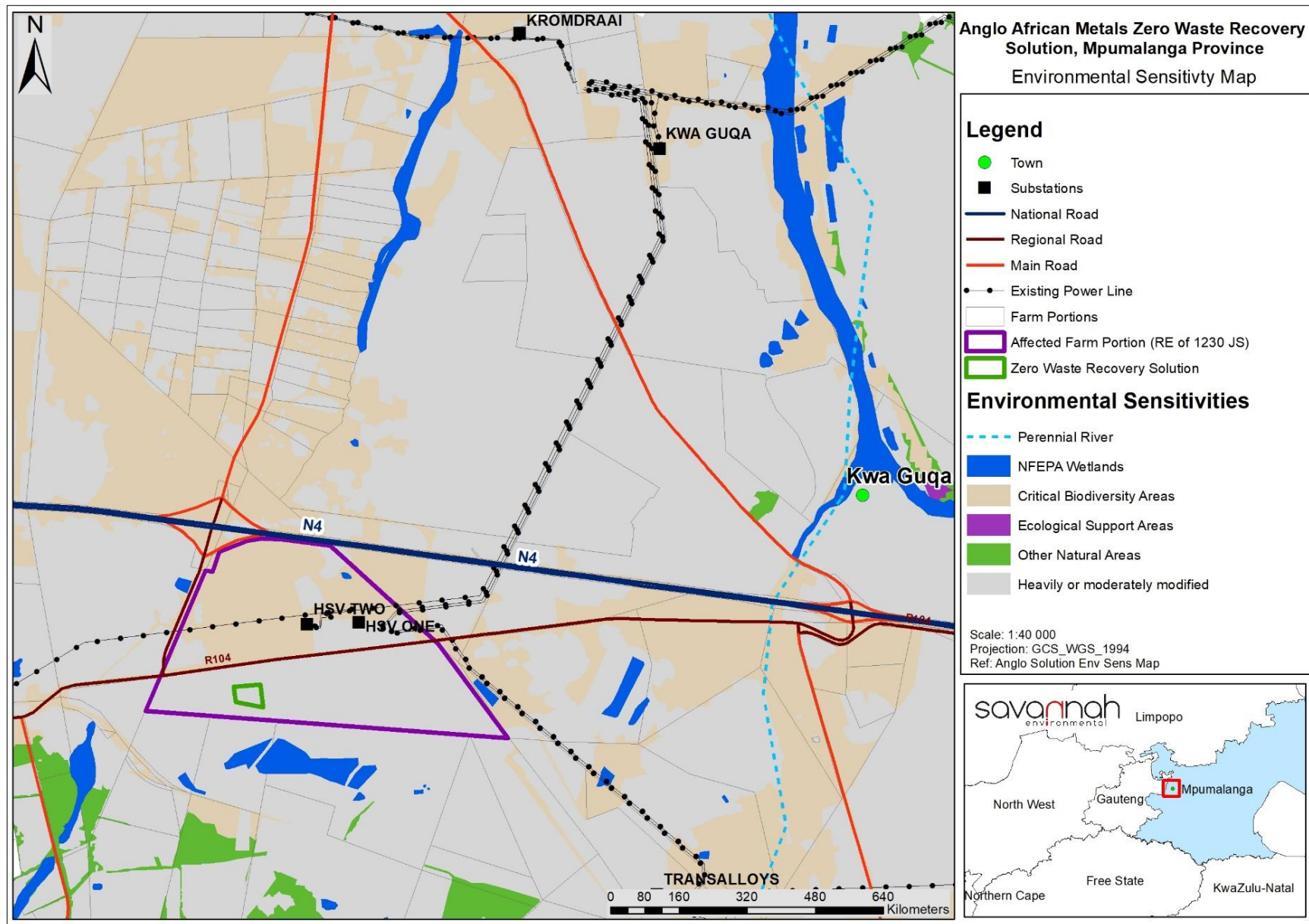


Figure 6.5: Environmentally sensitive areas identified in the vicinity of the site