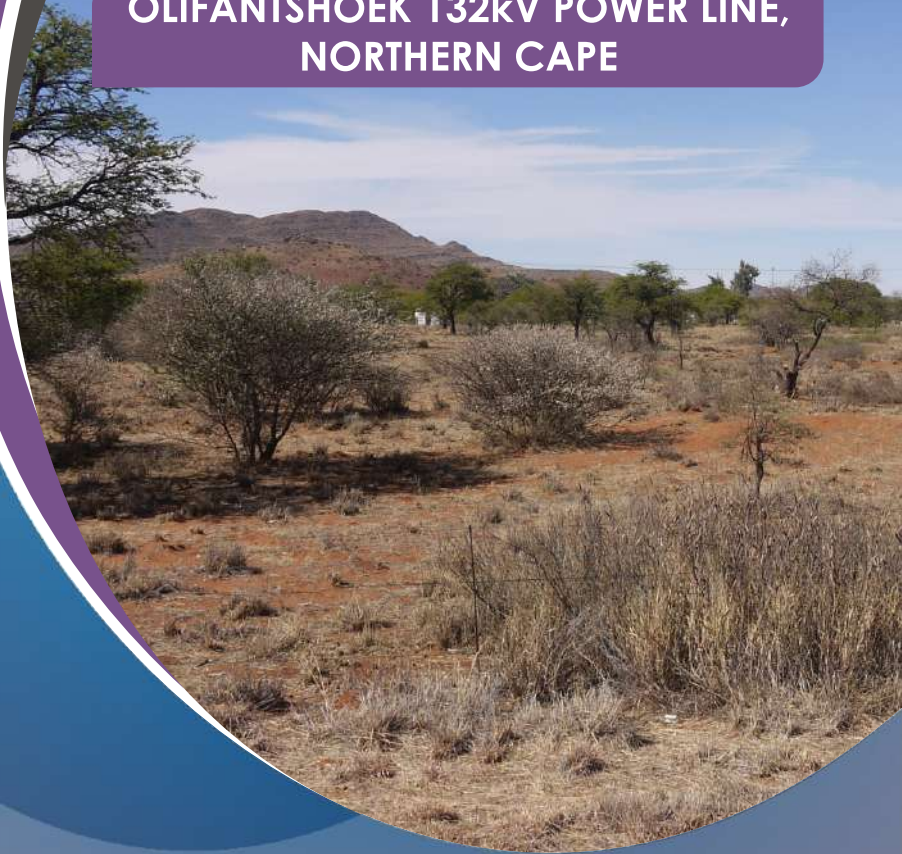


FEBRUARY 2020

ENVIRONMENTAL IMPACT ASSESSMENT
AND
PUBLIC PARTICIPATION PROCESS

OLIFANTSHOEK 132kV POWER LINE,
NORTHERN CAPE



savannah
environmental

BACKGROUND INFORMATION DOCUMENT



The Gamagara Local Municipality proposes the construction and operation of a single circuit 132kV power line and an associated haul road between the existing Elim Traction Substation and the authorised Olifantshoek Substation near the town of Olifantshoek in the Northern Cape Province. The power line will be used to strengthen the grid network in the area in order to ensure adequate supply of electricity for residents within the municipality's jurisdictional area. The project is located within the greater John Taolo Gaetsewe District Municipality and the Gamagara Local Municipality in the Northern Cape Province.

The nature and extent of the grid connection infrastructure is explored in more detail in this Background Information Document (BID). The public participation process to be undertaken for the project will provide interested and affected parties (I&APs) and organs of state with an opportunity to comment on the project.

AIM OF THIS BACKGROUND INFORMATION DOCUMENT

This document aims to provide you, as an interested and/or affected party (I&AP), with:

- » An overview of the proposed power line.
- » An overview of the BA process and specialist studies being undertaken to assess the development of the power line.
- » Details of how you can become involved in the BA process, receive information, or raise issues, which may concern and/interest you.

PROJECT DETAILS

The power line and a two-way 4m wide haul road (to be used during the construction phase) will be developed within a 300m wide and 36km long grid connection corridor with a 31m servitude, which will allow for the optimisation of the infrastructure to be developed and to avoid identified environmental sensitivities. As per the requirements of the EIA Regulations, 2014 (as amended), a basic assessment (BA) process is required to be undertaken in support of an application for Environmental Authorisation for the project.

The grid connection infrastructure is proposed on the following properties (refer to the attached Locality Map):

Remaining Extent of the Farm Fritz 540	Portion 1 of the Farm Gamagara 541
Portion 1 of the Farm Fritz 540	Portion 7 of the Farm Gamagara 541
Portion 2 of the Farm Fritz 540	Portion 2 of the Farm Dingle 565
Portion 4 of the Farm Fritz 540	Remaining Extent of the Farm Dingle 565
Portion 5 of the Farm Fritz 540	Remaining Extent of the Farm Smythe 566
Portion 8 of the Farm Fritz 540	Portion 1 of the Farm Wright 538
Portion 9 of the Farm Fritz 540	Remaining Extent of the Farm Murray 570
Portion 10 of the Farm Fritz 540	Portion 2 of the Farm Murray 570
Remaining Extent of the Farm Gamagara 541	Remaining Extent of the Farm Cox 571
Portion 4 of the Farm Cox 571	Portion 1 of the Farm Cox 571

Remaining Extent of the Farm Hartley 573	Portion 3 of the Farm Cox 571
Portion 3 of the Farm Hartley 573	Remaining Extent of the Farm Diegaart's Heuwel 765
Remaining Extent of the Farm Neylan 574	Portion 1 of the Farm Neylan 574
Remaining Extent of the Farm Neylan 766	Portion 3 of the Farm Neylan 766
Portion 4 of the Farm Neylan 766	Portion 7 of the Farm Neylan 766
Remaining Extent of the Farm Erf 155 Olifantshoek	

ENVIRONMENTAL IMPACT ASSESSMENT PROCESS

In accordance with the EIA Regulations, 2014 (as amended) published in terms of Section 24(5) of the National Environmental Management Act (No. 107 of 1998) (NEMA), the proponent requires Environmental Authorisation (EA) from the National Department of Environmental Affairs (DEA)¹ in consultation with the Northern Cape Department of Environment and Nature Conservation (DENC) for the development and operation of the proposed project. In terms of Section 24(5) of NEMA, the 2014 EIA Regulations (GNR 326) and the Listing Notice 1 (GNR 327), the application for EA is subject to the completion of a BA process, as the capacity of the power line will be up to 132kV. The application for EA is required to be supported by comprehensive, independent environmental studies undertaken in accordance with Appendix 6 of the 2014 EIA Regulations (GNR 326).

A BA is an effective planning and decision-making tool as it allows for potential environmental consequences resulting from a proposed activity to be identified and appropriately managed during the construction, operation, and decommissioning phases of development. It also provides an opportunity for the project proponent to be forewarned of potential environmental issues and allows for the resolution of issue(s) identified and reported on as part of the BA process, as well as provides opportunity for dialogue with key stakeholders and I&APs.

Savannah Environmental has been appointed as the independent environmental consultant responsible for managing the application for EA and undertaking the supporting BA process required to identify and assess potential environmental impacts associated with the project, as well as propose appropriate mitigation and management measures to be contained within the Environmental Management Programme (EMPr). I&APs will be actively involved in the BA process through the public participation process.

WHAT ARE THE POTENTIAL ENVIRONMENTAL IMPACTS ASSOCIATED WITH THE PROPOSED PROJECT?

The proposed grid connection corridor will be assessed by independent environmental specialists to identify the potential for environmental impacts. Specialist studies that are proposed as part of the BA process include the following:

- » Biodiversity - which includes ecology, fauna, flora) and freshwater features and assesses the potential impact and the associated disturbance of vegetation on the biodiversity (including critical biodiversity areas and broad-scale processes).
- » Avifauna - includes an assessment of impacts on avifaunal habitats and sensitive species.

¹ The Department of Environmental Affairs is soon to be called the Department of Environment, Forestry and Fisheries (DEFF).



- » Heritage - which includes an assessment of the potential of disturbance to, or destruction of heritage, archaeological and palaeontological sites during the construction phase through excavation activities.
- » Visual - which includes the visual quality of the area and assesses the impact of the power line infrastructure on the aesthetics within the area.
- » Social - which assesses the positive and negative impacts on the social environment.

The independent specialist studies will identify and assess the potentially significant impacts through desk-top and field studies, and input from the public participation process. Practical and achievable mitigation measures will be recommended in order to minimise the significance of the potential impacts identified. These recommendations will be included in the EMPr compiled for the project.

PUBLIC PARTICIPATION PROCESS

The sharing of information forms the basis of the public participation process and offers I&APs the opportunity to become actively involved in the BA process being undertaken for the project. Comments and inputs from I&APs are encouraged in order to ensure that potential impacts are considered throughout. The public participation process aims to ensure that:

- » Information containing all relevant facts in respect of the application is made available to I&APs for review.
- » I&AP participation is facilitated in such a manner that they are provided with reasonable opportunity to comment on the proposed project.
- » An adequate review and comment period is provided for I&APs to comment on the findings of the BA Report.

In order to ensure effective participation, the public participation process includes the following:

- » Identifying I&APs, including affected and adjacent landowners and occupiers of land, and relevant Organs of State.
- » Placing site notices at strategic locations along the grid connection corridor.
- » Placing an advertisement in a local newspaper.
- » Compiling and maintaining a database of I&APs throughout the BA process.
- » Notifying I&APs of the commencement of the BA process and distributing the Background Information Document (BID).
- » Notifying I&APs of relevant milestones throughout the BA process.
- » Notifying I&APs of the release of the BA Report for a 30-day review and comment period.
- » Holding consultation meetings with I&APs during the 30-day review and comment period in order to provide the I&APs with an opportunity to engage with the EIA project team and raise comments on the project.
- » Notifying I&APs of DEA's final decision on whether to grant or refuse EA, and the manner in which such a decision may be appealed.

As an I&AP, your input is considered as an important part of the process, and we urge you to become involved.

YOUR RESPONSIBILITIES AS AN I&AP

In terms of the EIA Regulations 2014, (GNR 326, as amended), your attention is drawn to your

responsibilities as an I&AP:

- » In order to participate in the BA process, you must register yourself on the I&AP database.
- » You must ensure that any comments regarding the proposed project are submitted within the stipulated timeframe.
- » You are required to disclose any direct business, financial, personal, or other interest that you may have in the approval or refusal of the application.

HOW TO BECOME INVOLVED

1. By responding by phone, fax, or e-mail, to the invitation for your involvement.
2. By returning the reply form to the relevant contact person.
3. By attending meetings to be held during the course of the BA process.
4. By contacting the environmental consultants with queries or comments.
5. By reviewing and commenting on the BA Report within the stipulated 30-day review and comment period. Registered I&APs will automatically be notified of the release of the BA Report for comment, and the closing dates by which comments must be received.

If you consider yourself an I&AP for the proposed project, we urge you to make use of the opportunities created by the public participation process to provide comment, raise issues and concerns which affect and / or interest you, or request further information. Your input forms a key element of the BA process.

By completing and submitting the accompanying reply form, you automatically register yourself as an I&AP for the proposed project, and are ensured that your comments, concerns, or queries raised regarding the project will be noted.

COMMENTS AND QUERIES

Direct all comments, queries, or responses to:

Nicolene Venter

P.O. Box 148, Sunninghill, Johannesburg, 2157

Tel: 011 656 3237

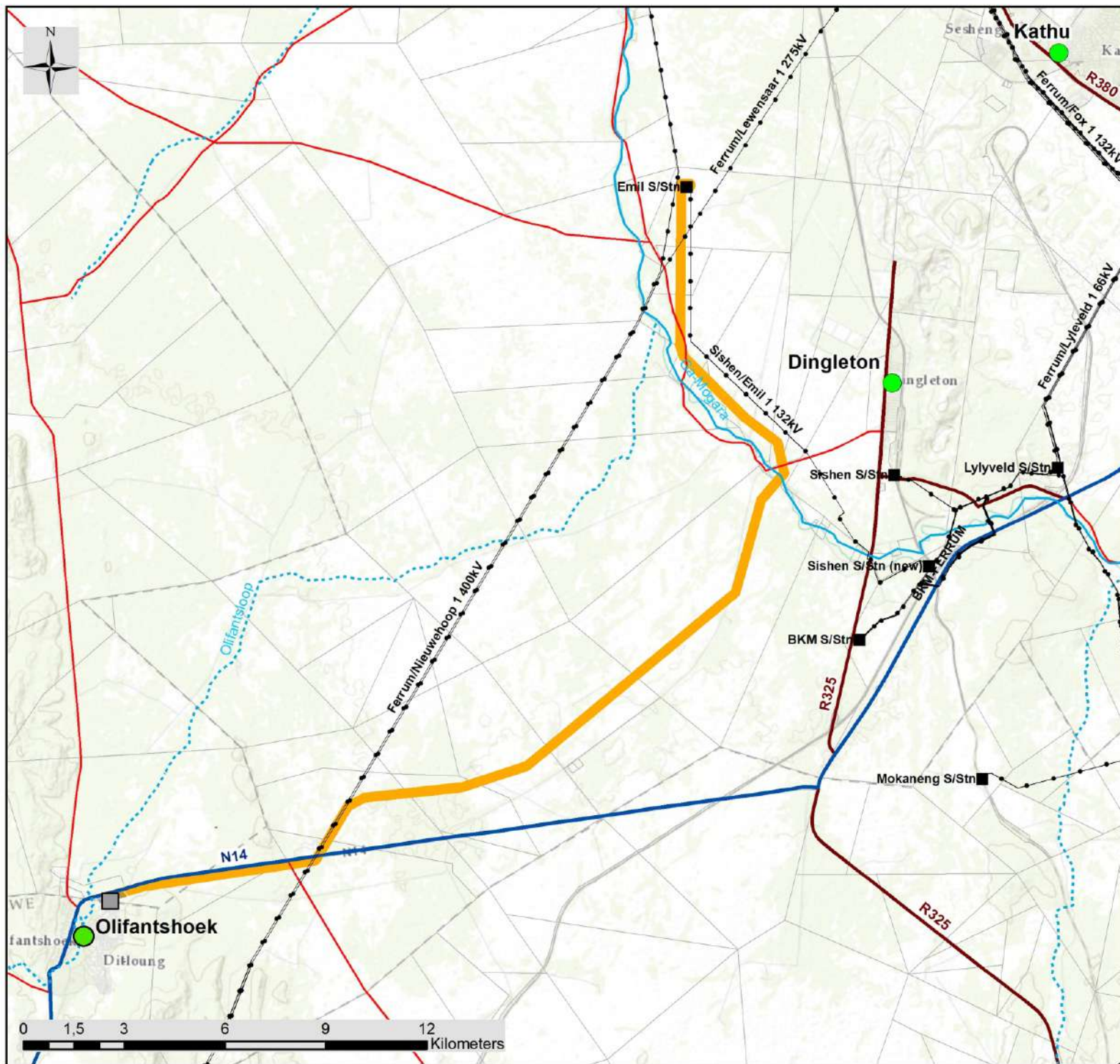
Fax: 086 684 0547

E-mail: publicprocess@savannahsa.com

To view project documentation, visit

www.savannahSA.com





Olifantshoek 132kV Power Line, Northern Cape

Locality Map

Legend

- Town
- Eskom Substations
- Eskom Power Line
- Perennial River
- - - Non-perennial River
- National Route
- Regional Road
- Main Road
- - - Railway Line
- Authorised Olifantshoek Substation
- Proposed 300m Power Line Corridor
- Farm Portions

savannah
environmental

Scale: 1 : 3 000 000
 Projection: LO21
 Ref: Olifantshoek 132kV Power Line, Northern Cape

