

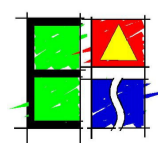
“UMNKELO”
 “AS BUILT” NOTES
 SITE DEVELOPMENT PLAN

UTSHINTSHO / AMENDMENTS			
INANI No.	UMHLA DATE	INIKAZA DESCRIPTION	IVUNYELWE APPROVED

UMLINGANISELO WOMZOBO OHLISSIWEYO
 SCALE ON REDUCED DRAWING
 UMLINGANISELO / SCALE
 1:25 000
 UTM Zone 35
 0 0.5 1 km

UMENZI DESIGN
 UMZOB I DRAWN
 IVUNYELWE APPROVED
 UMHLA DATE
 MN
 JC
 SM
 Jan 2021

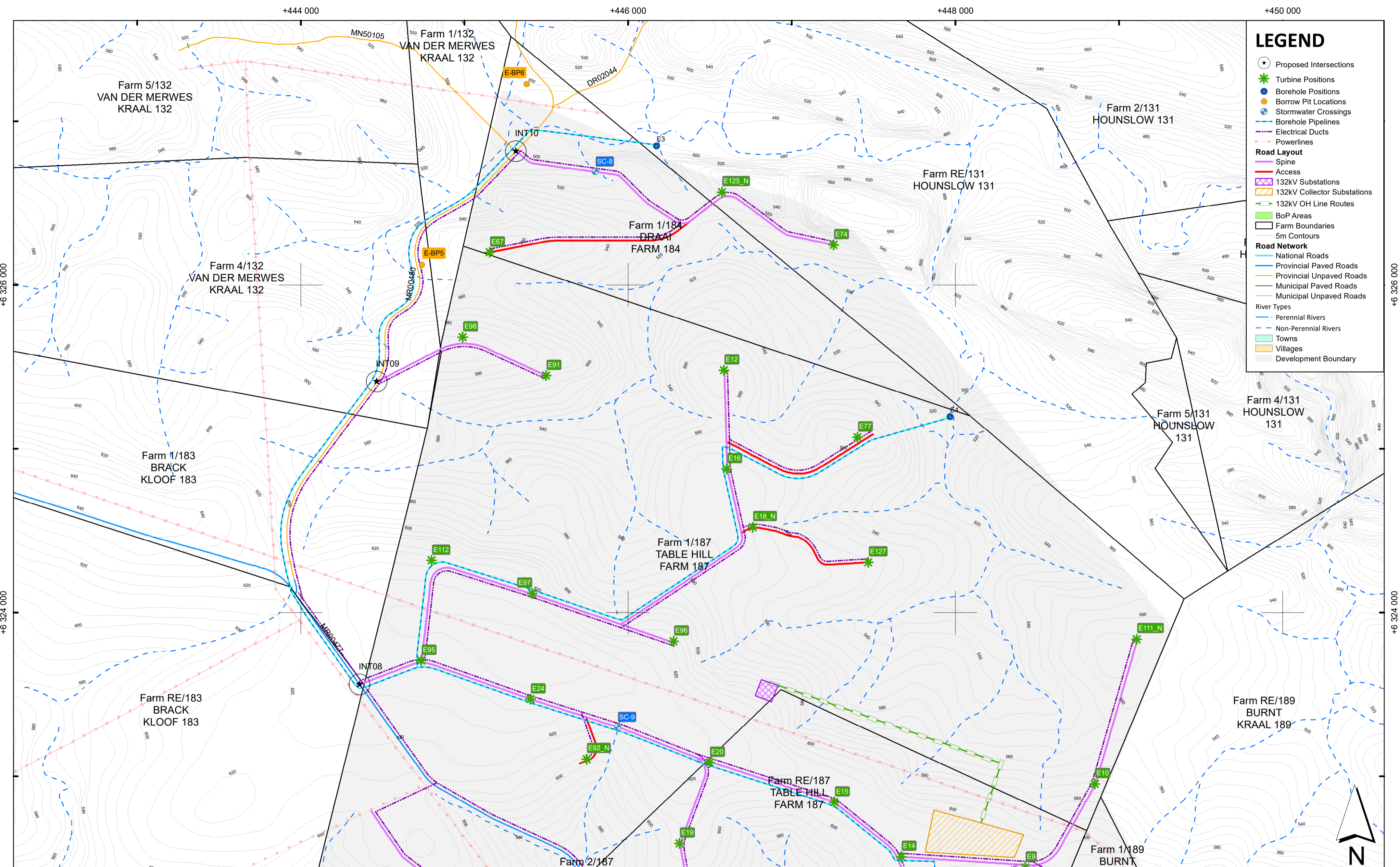
ENGINEERING ADVICE AND SERVICES associated with ULWAZI
 73 Heugh Road, Walmer
 P.O. Box 13867
 Humewood
 Port Elizabeth
 6013
 tel/fax: (041) 581 2421



IVUNYELWE APPROVED
 INJINELI / ENG.
 UMHLA / DATE



IPROJETHI / PROJECT
 CHOJE WIND FARM
 UMZOBONKCAZA / DWG DESCRIPTION
 FRONTIER DEVELOPMENT AREA - KEY PLAN
 INANI LOMZOBO / DWG.NO.
 1600-E2-FT-SDP-KEYPLAN_REV01



LEGEND

- Proposed Intersections
- Turbine Positions
- Borehole Positions
- Borrow Pit Locations
- Stormwater Crossings
- Borehole Pipelines
- Electrical Ducts
- Powerlines

Road Layout

- Spine
- Access
- 132kV Substations
- 132kV Collector Substations
- 132kV OH Line Routes
- BoP Areas
- Farm Boundaries
- 5m Contours

Road Network

- National Roads
- Provincial Paved Roads
- Provincial Unpaved Roads
- Municipal Paved Roads
- Municipal Unpaved Roads

River Types

- Perennial Rivers
- Non-Perennial Rivers

Towns

- Villages
- Development Boundary

UTSHINTSHO / AMENDMENTS

INANI No.	UMHLA DATE	INKCAZA DESCRIPTION	IVUNYELWE APPROVED

SITE DEVELOPMENT PLAN

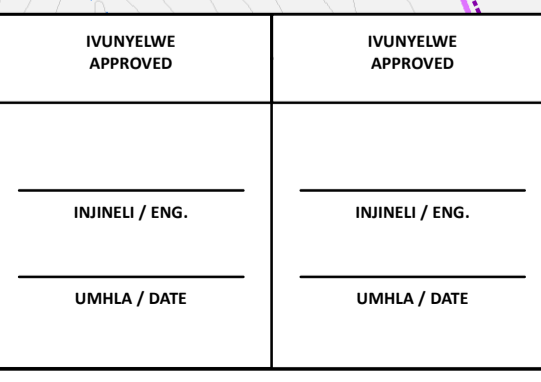
SHEET 1 OF 2

UMLINGANISELO WOMZOBO OHLISSIWEYO SCALE ON REDUCED DRAWING	UMENZI DESIGN	MN
UMLINGANISELO / SCALE	UMZOBI DRAWN	JC
1:15 000	IVUNYELWE APPROVED	SM
UTM Zone 35	UMHLA DATE	Nov 2020
0 0.25 0.5 km		

ENGINEERING ADVICE AND SERVICES associated with ULWAZI

73 Heugh Road, Walmer
P.O. Box 13867
Humewood
Port Elizabeth
6013
tel/fax: (041) 581 2421

IVUNYELWE APPROVED	IVUNYELWE APPROVED
ININELI / ENG.	ININELI / ENG.
UMHLA / DATE	UMHLA / DATE



PROJETI / PROJECT

CHOJE WIND FARM

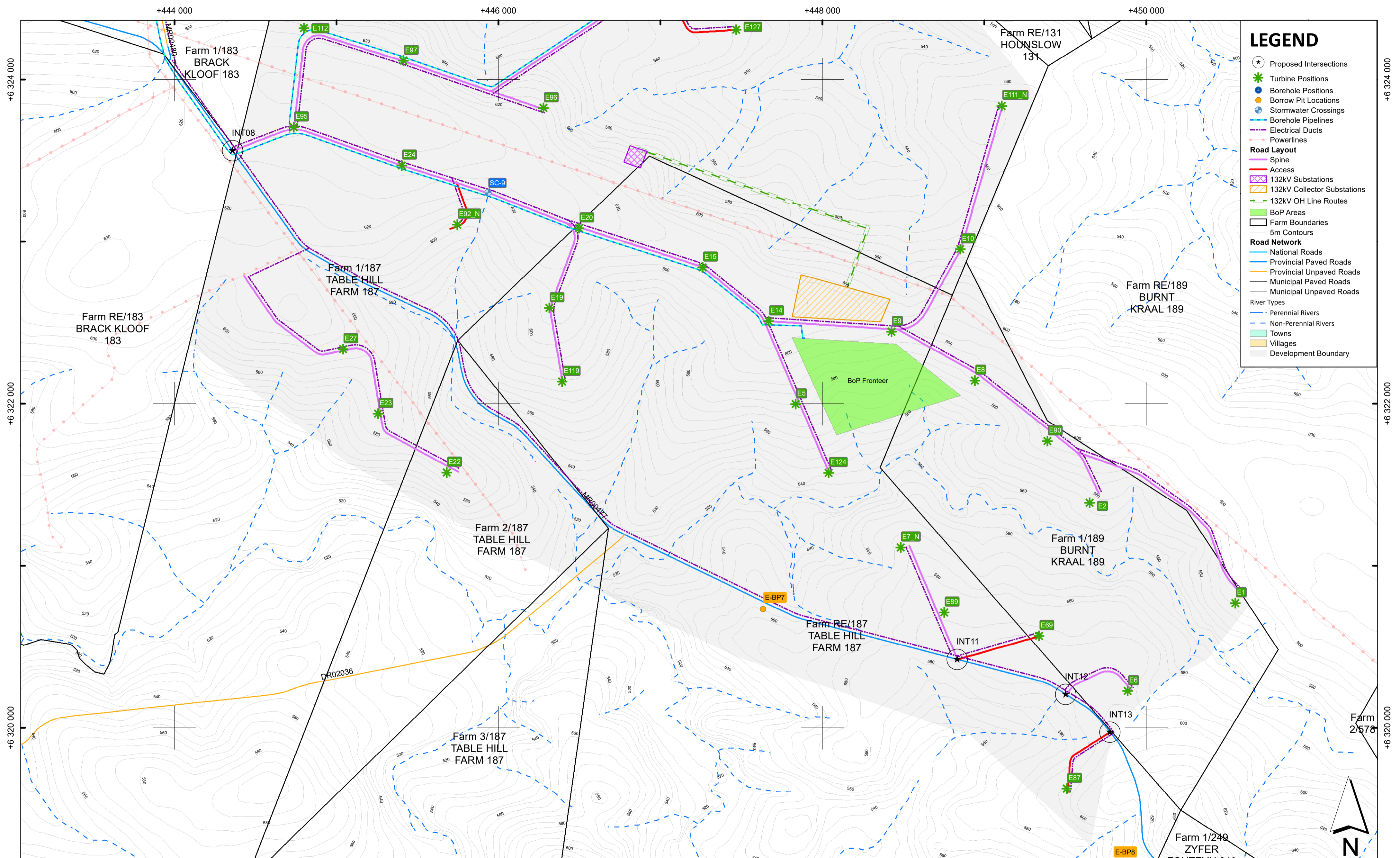
UMZOBONKCAZA / DWG DESCRIPTION

FRONTIER DEVELOPMENT AREA - LAYOUT 1

INANI LOMZOBO / DWG.NO.

1600-E2-FT-SDP-LAYOUT1_REV00

WIND RELIC
RENEWABLES



LEGEND

- Proposed Intersections
- Turbine Positions
- Borehole Positions
- Borrow Pit Locations
- Stormwater Crossings
- Borehole Pipelines
- Electrical Ducts
- Powerlines

Road Layout

- Spine
- Access
- 132kV Substations
- 132kV Collector Substations
- 132kV OH Line Routes
- BoP Areas
- Farm Boundaries
- 5m Contours

Road Network

- National Roads
- Provincial Paved Roads
- Provincial Unpaved Roads
- Municipal Paved Roads
- Municipal Unpaved Roads

River Types

- Perennial Rivers
- Non-Perennial Rivers

- Towns
- Villages
- Development Boundary

"UMNIKELO"
"AS BUILT" NOTES

SITE DEVELOPMENT PLAN

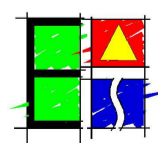
SHEET 2 OF 2

UTSHINTSHO / AMENDMENTS			
INANI No.	UMHLA DATE	INKCAZA DESCRIPTION	IVUNYELWE APPROVED

UMLINGANISELO WOMZOBO OHLISSIWEYO SCALE ON REDUCED DRAWING	UMENZI DESIGN	MN
UMLINGANISELO / SCALE 1:15 000 UTM Zone 35	UMZONI DRAWN	JC
0 0.25 0.5 km	IVUNYELWE APPROVED	SM
UMHLA DATE	UMHLA DATE	Nov 2020

ENGINEERING ADVICE AND SERVICES
associated with ULWAZI

73 Heugh Road, Walmer
P.O. Box 13867
Humewood
Port Elizabeth
6013
tel/fax: (041) 581 2421



IVUNYELWE APPROVED	IVUNYELWE APPROVED
ININELI / ENG.	ININELI / ENG.
UMHLA / DATE	UMHLA / DATE



IPROJETI / PROJECT	CHOJE WIND FARM
UMZOBONKAZA / DWG DESCRIPTION	FRONTIER DEVELOPMENT AREA - LAYOUT 2
INANI LOMZOBO / DWG.NO.	1600-E2-FT-SDP-LAYOUT2_REV00