

Figure 1.1: Locality map of the project site showing the location of the site in relation to the closest towns of the area

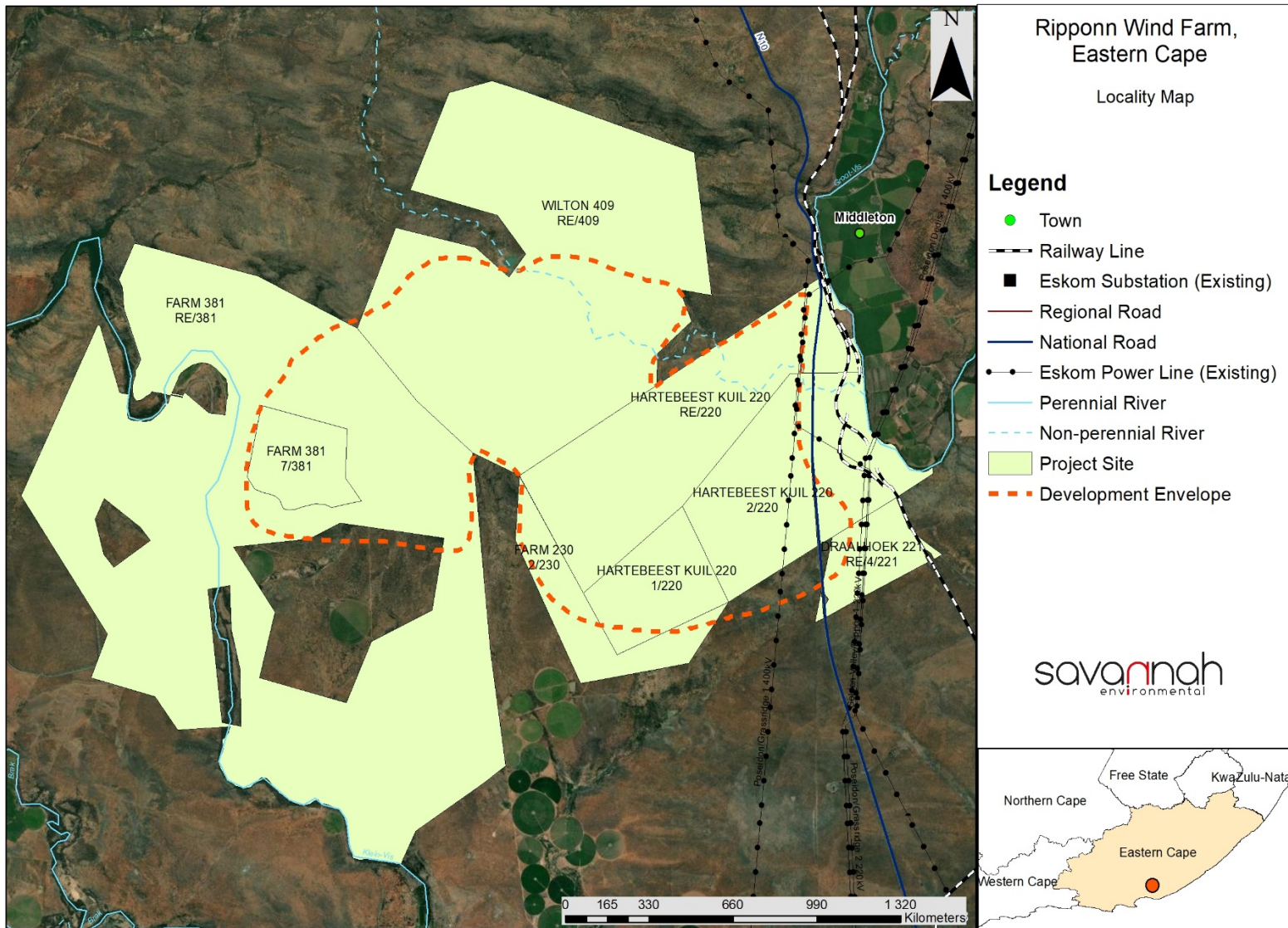


Figure 1.2: Details of the project site and the location of the development envelope within the project site

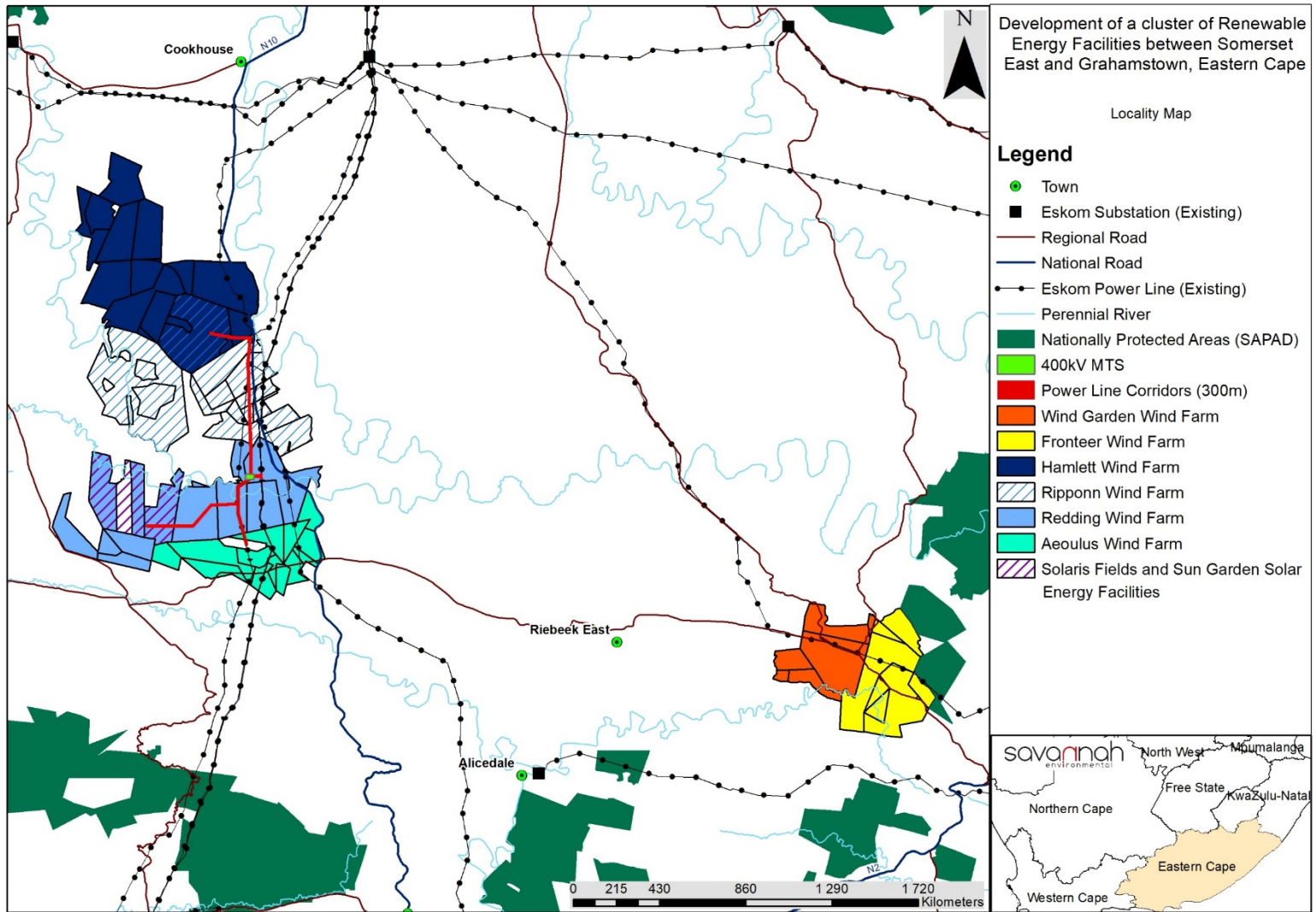


Figure 1.3: The cluster of proposed renewable energy facilities that the Ripponn Wind Farm forms part of

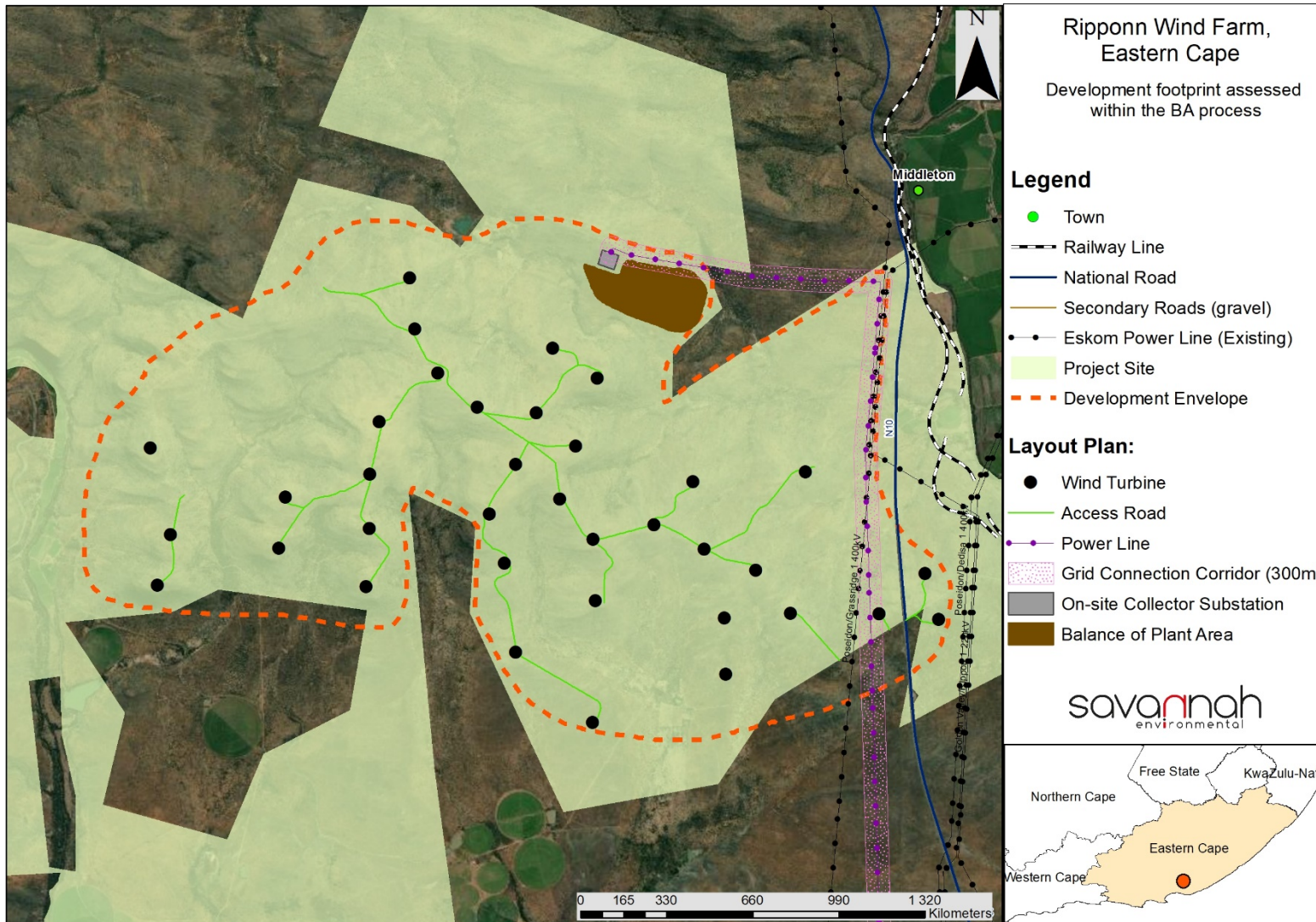


Figure 2.3: Development footprint (~30.8ha) assessed within this BA Report for the Ripponn Wind Farm

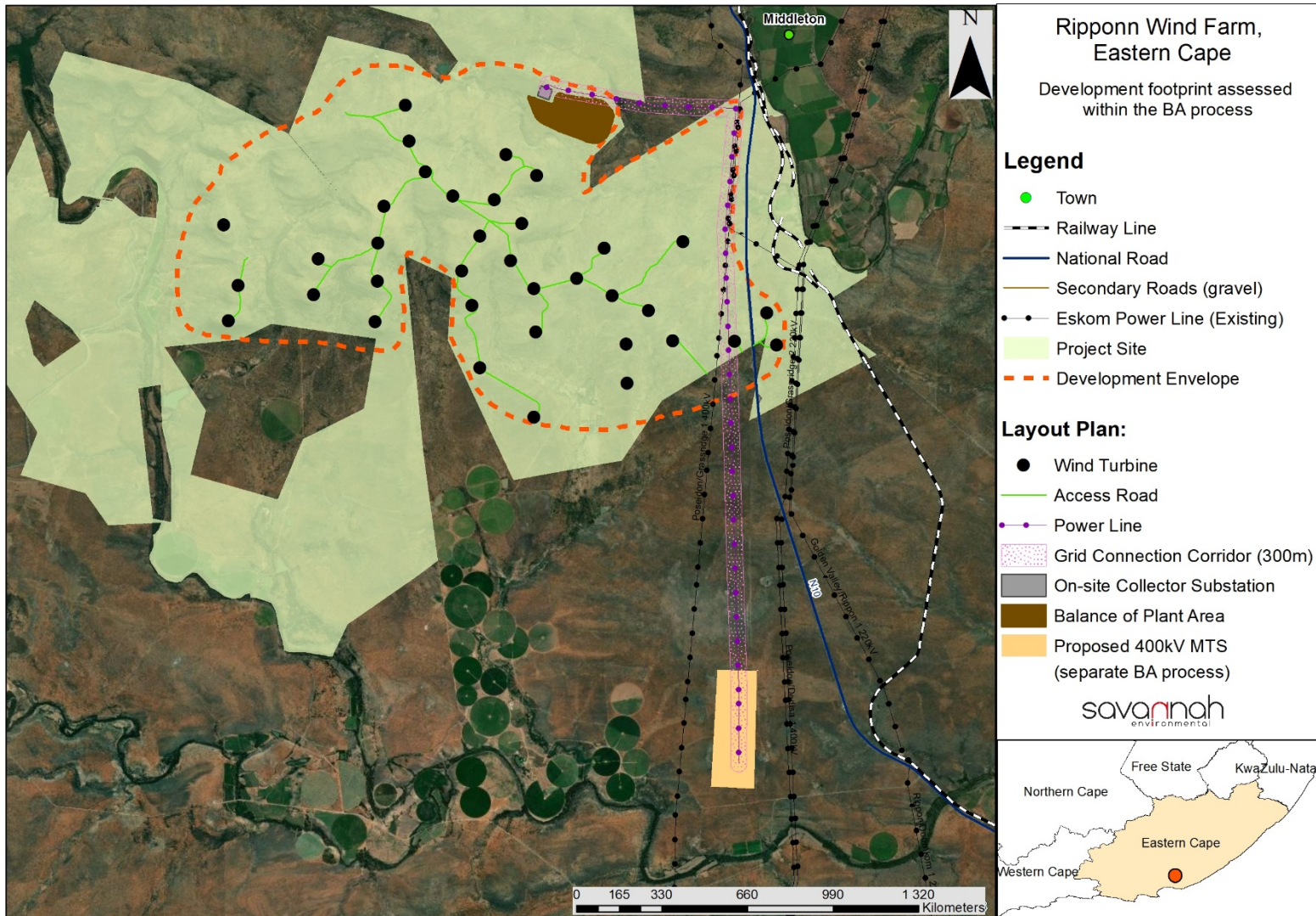


Figure 2.4: Full extent of the Ripponn Wind Farm development footprint showing the full extent of the proposed power line and the connection point thereof

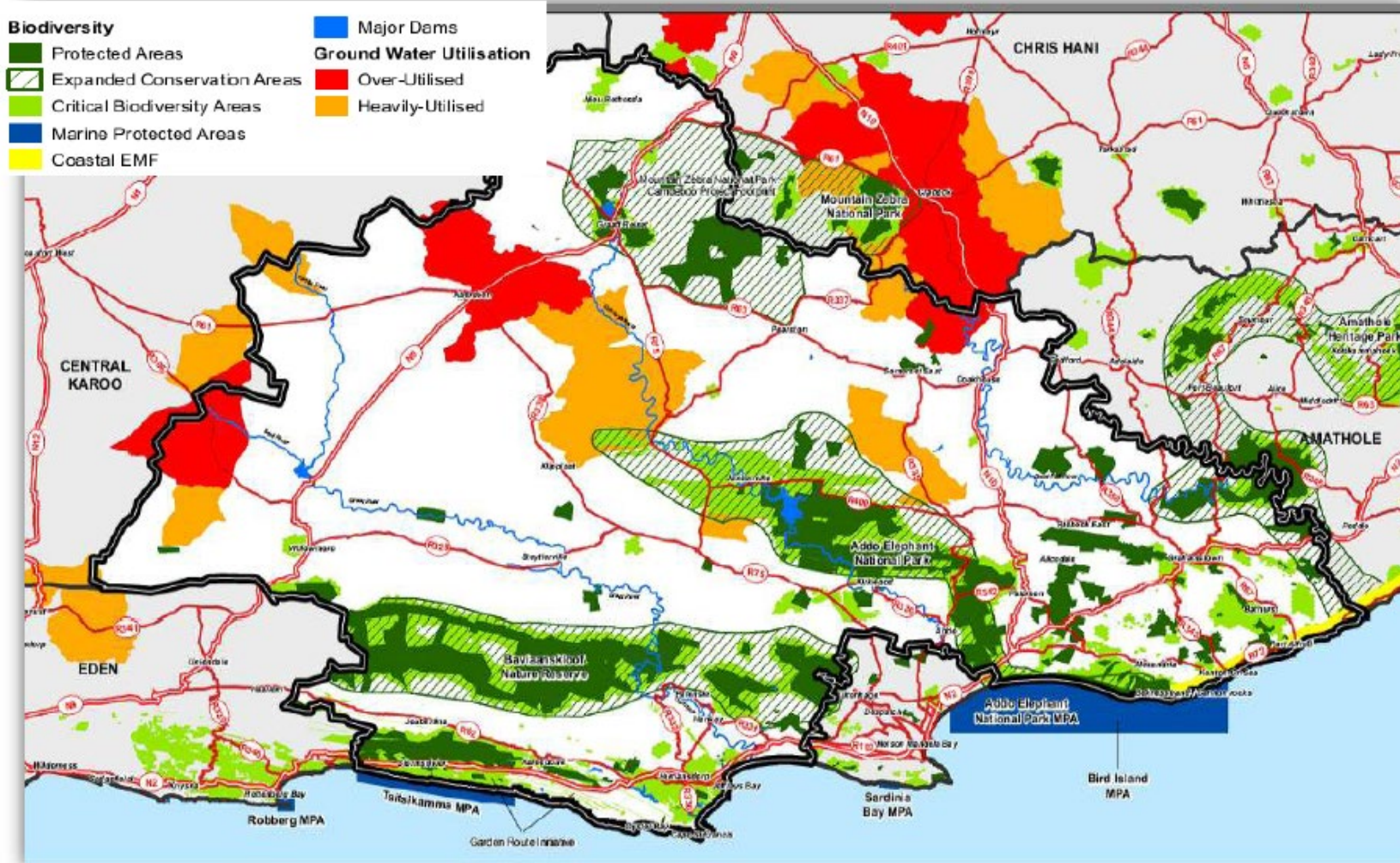


Figure 5.2: Environmental synopsis map detailed within the Sarah Baartman SDF

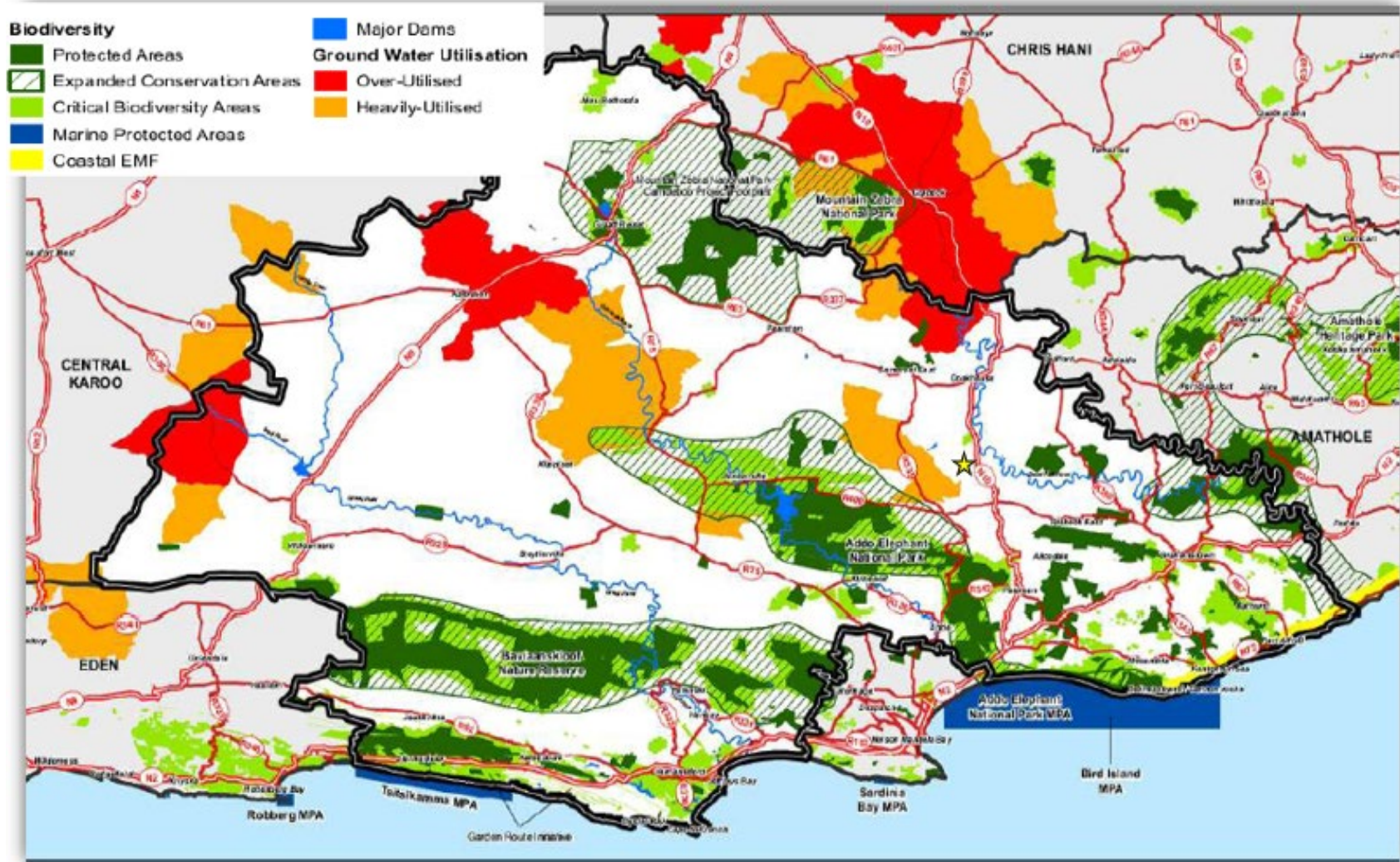


Figure 5.3: Environmental synopsis map detailed within the Sarah Bartaan SDF

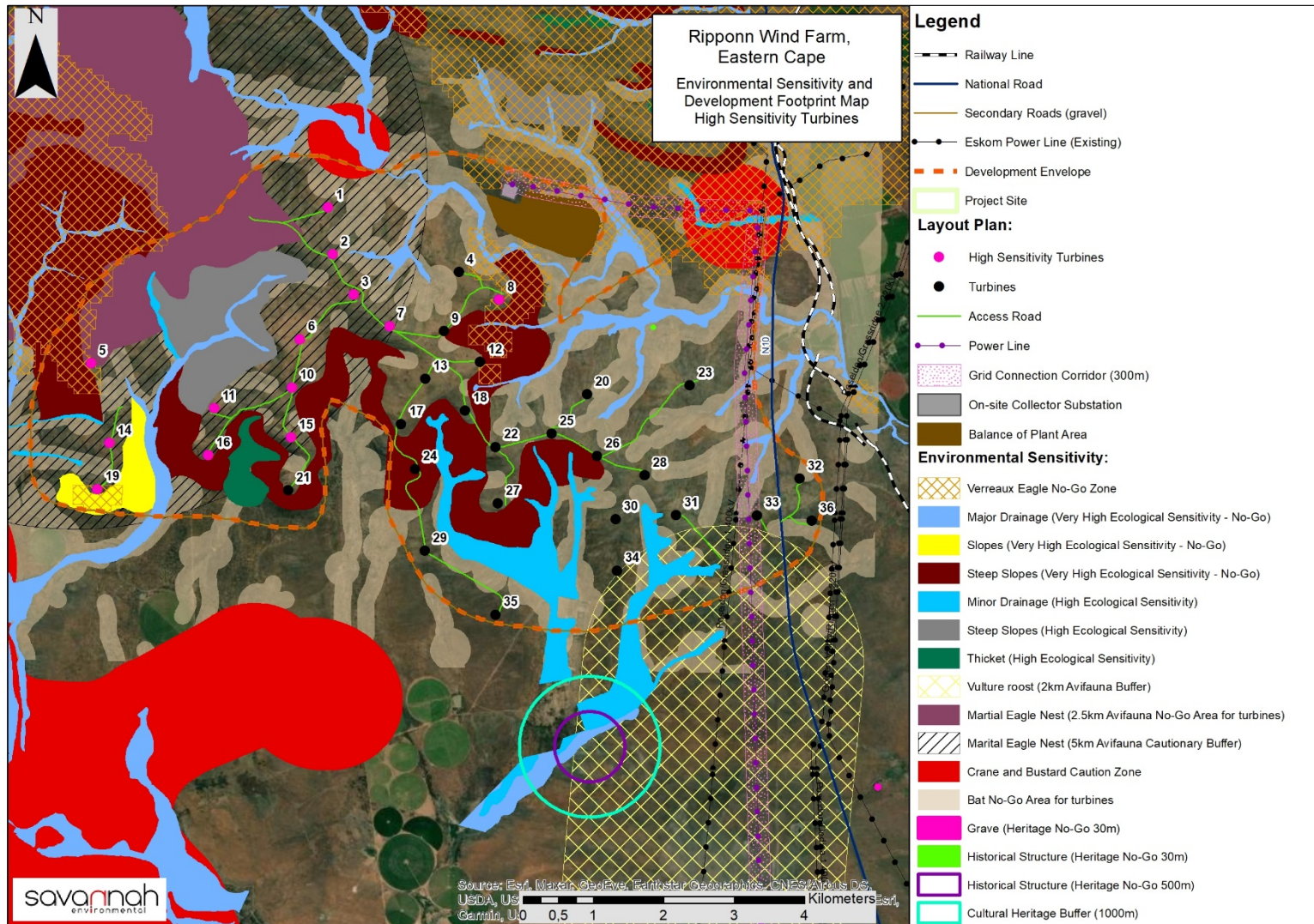


Figure 12.1: The development footprint (~30.8ha) of the Ripponn Wind Farm, as assessed within this BA Report, overlain on the identified environmental sensitive features

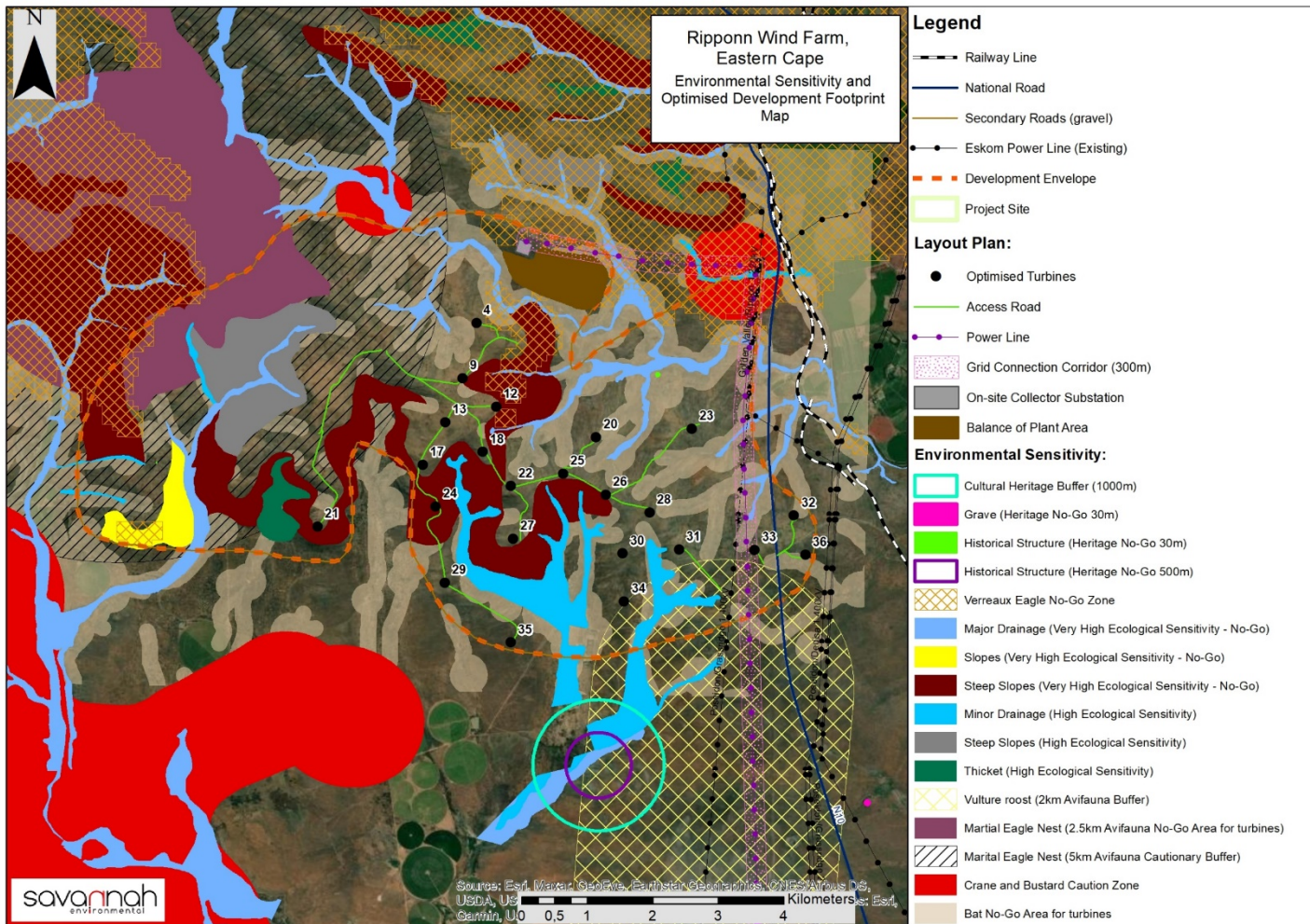


Figure 12.2: Final preferred (optimised) development footprint for the Ripponn Wind Farm, overlain with the identified environmental sensitivities

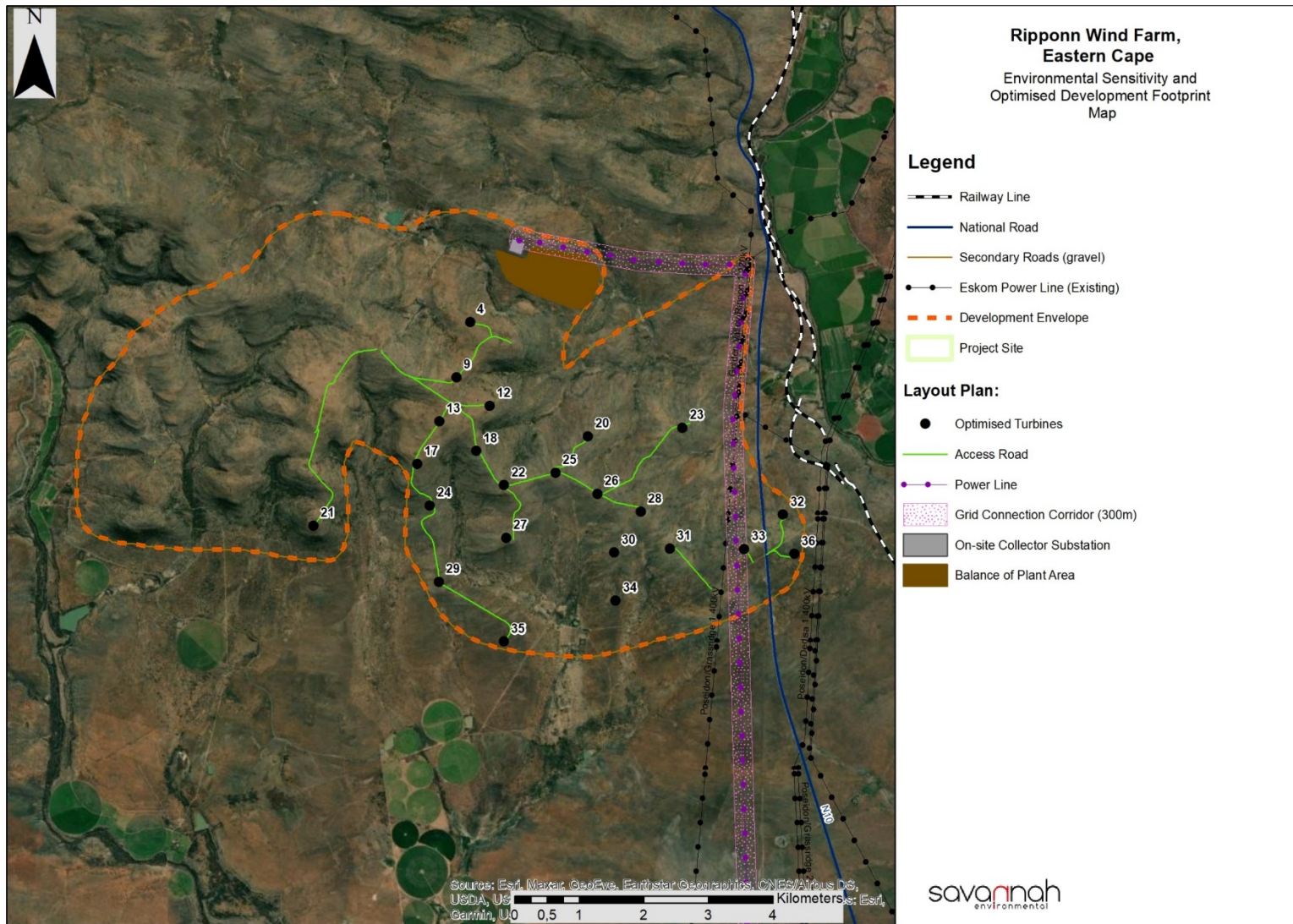


Figure 12.3: Final preferred (optimised) development footprint for the Ripponn Wind Farm considered to be acceptable for development