

LEGEND

- ★ Proposed Intersections
- ★ Turbine Positions
- Borehole Positions
- Borrow Pit Locations
- Stormwater Crossings
- Borehole Pipelines
- Electrical Ducts
- Powerlines
- Road Layout**
- Spine
- Access
- 132kV Substations
- 132kV Collector Substations
- 132kV OH Line Routes
- BoP Areas
- ▭ Farm Boundaries
- 5m Contours
- Road Network**
- National Roads
- Provincial Paved Roads
- Provincial Unpaved Roads
- Municipal Paved Roads
- Municipal Unpaved Roads
- River Types**
- Perennial Rivers
- Non-Perennial Rivers
- Towns
- Villages
- ▭ Development Boundary
- ▭ SDP Layouts

UTSHINTSHO / AMENDMENTS

INANI No.	UMHLA DATE	INKCAZA DESCRIPTION	IVUNYELWE APPROVED

SITE DEVELOPMENT PLAN

UMLINGANISELO WOMZOBO OHLISSIWEYO
SCALE ON REDUCED DRAWING

UMLINGANISELO / SCALE
1:25 000
UTM Zone 35

0 0.5 1 km

UMENZI DESIGN
MIN

UMZOB I DRAWN
JC

IVUNYELWE APPROVED
SM

UMHLA DATE
Jan 2021

ENGINEERING ADVICE AND SERVICES associated with ULWAZI

73 Heugh Road, Walmer
P.O. Box 13867
Humewood
Port Elizabeth
6013
tel/fax: (041) 581 2421

IVUNYELWE APPROVED

ININELI / ENG.

UMHLA / DATE



IPROJETI / PROJECT

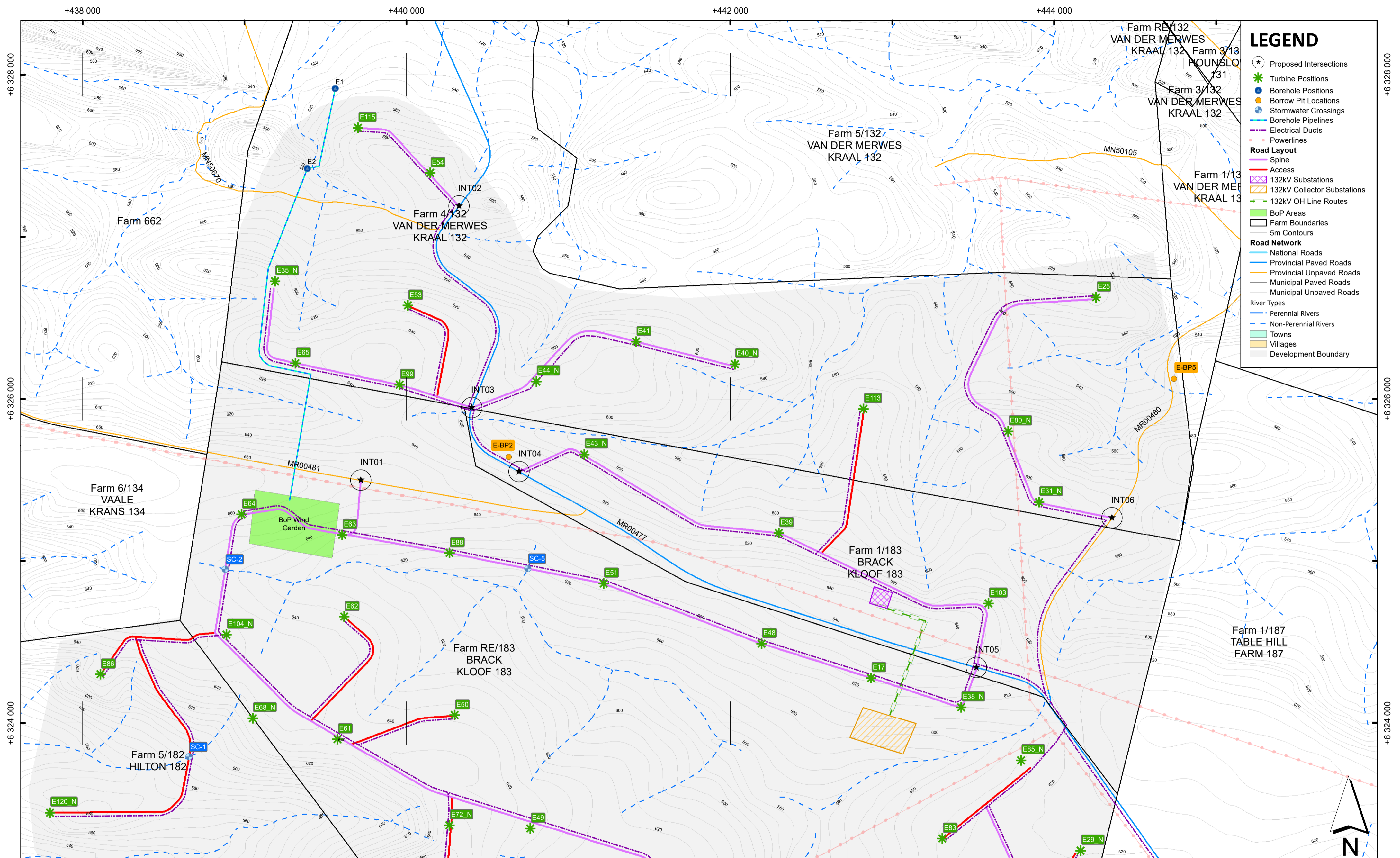
CHOJE WIND FARM

UMZOBONKCAZA / DWG DESCRIPTION

WIND GARDEN DEVELOPMENT AREA - KEY PLAN

INANI LOMZOBO / DWG.NO.

1600-E1-WG-SDP-KEYPLAN_REV01



UMLINGISOLO
 "AS BUILT" NOTES
 SITE DEVELOPMENT PLAN
 SHEET 1 OF 2

UTSHINTSHO / AMENDMENTS			
INANI No.	UMHLA DATE	INKCAZA DESCRIPTION	IVUNYELWE APPROVED

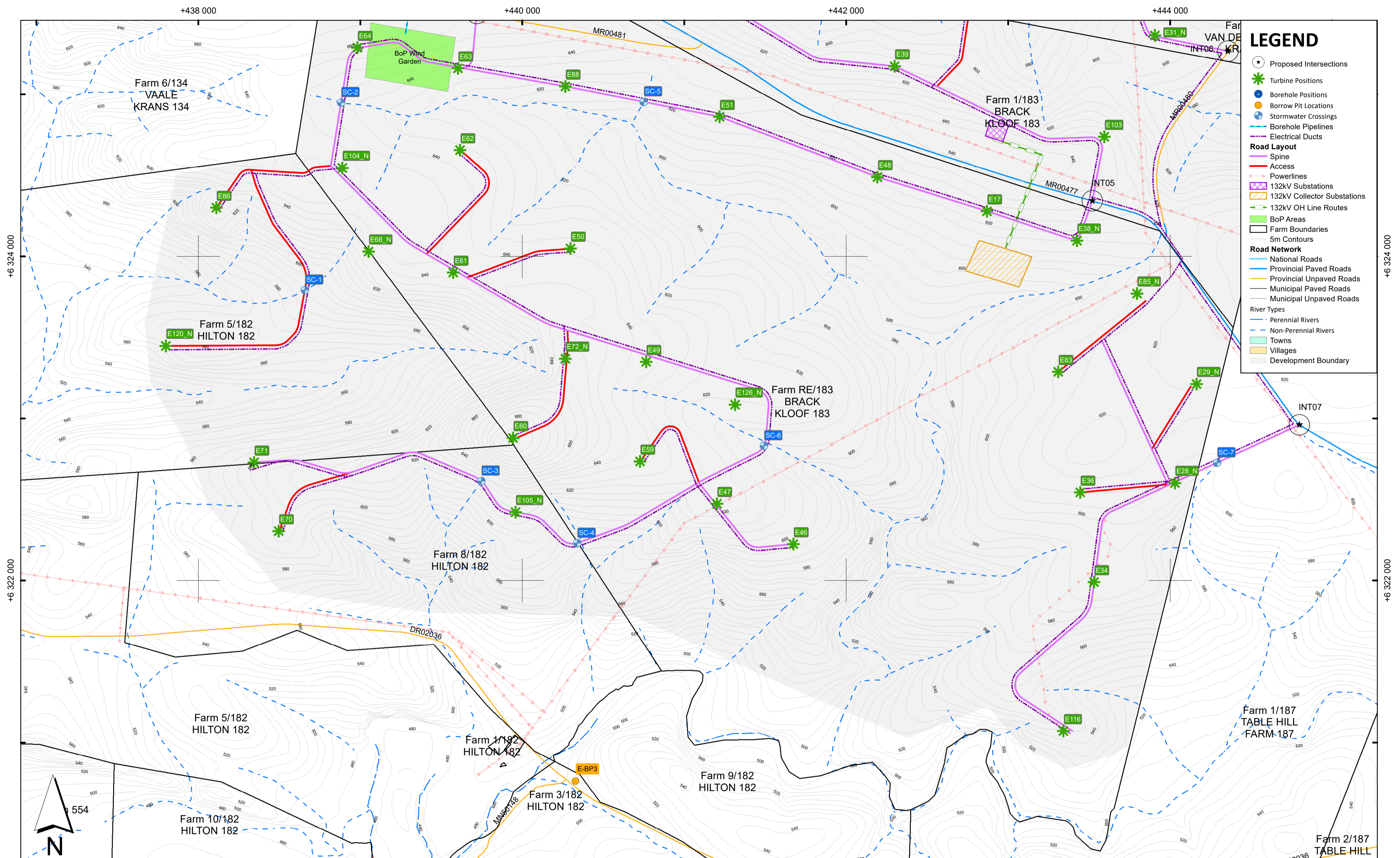
UMLINGANISELO WOMZOBO OHLISSIWEYO SCALE ON REDUCED DRAWING	UMENZI DESIGN	MN
UMLINGANISELO / SCALE 1:15 000 UTM Zone 35	UMZOBANI DRAWN	JC
0 0.25 0.5 km	IVUNYELWE APPROVED	SM
	UMHLA DATE	Feb 2021

ENGINEERING ADVICE AND SERVICES associated with ULWAZI
 73 Heugh Road, Walmer
 P.O. Box 13867
 Humewood
 Port Elizabeth
 6013
 tel/fax: (041) 581 2421

IVUNYELWE APPROVED	IVUNYELWE APPROVED
ININELI / ENG.	ININELI / ENG.
UMHLA / DATE	UMHLA / DATE



IPROJETI / PROJECT
CHOJE WIND FARM
UMZOBONKCAZA / DWG DESCRIPTION
WIND GARDEN DEVELOPMENT AREA - LAYOUT 1
INANI LOMZOBO / DWG.NO.
1600-E1-WG-SDP-LAYOUT1_REV02



LEGEND

- Proposed Intersections
- Turbine Positions
- Borehole Positions
- Borrow Pit Locations
- Stormwater Crossings
- Borehole Pipelines
- Electrical Ducts

Road Layout

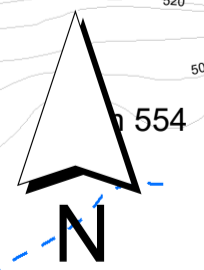
- Spine
- Access
- Powerlines
- 132kV Substations
- 132kV Collector Substations
- 132kV OH Line Routes
- BoP Areas
- Farm Boundaries
- 5m Contours

Road Network

- National Roads
- Provincial Paved Roads
- Provincial Unpaved Roads
- Municipal Paved Roads
- Municipal Unpaved Roads

River Types

- Perennial Rivers
- Non-Perennial Rivers
- Towns
- Villages
- Development Boundary



"UMNIKELO" "AS BUILT" NOTES SITE DEVELOPMENT PLAN SHEET 2 OF 2	UTSHINTSHO / AMENDMENTS				UMLINGANISELO WOMZOBO OHLISSIWEYO SCALE ON REDUCED DRAWING UMLINGANISELO / SCALE 1:15 000 <small>UTM Zone 35</small>	UMNENZI DESIGN UMZOBHI DRAWN IVUNYELWE APPROVED UMHLA DATE	MN JC SM Feb 2021	ENGINEERING ADVICE AND SERVICES associated with ULWAZI 73 Heugh Road, Walmer P.O. Box 13867 Humewood Port Elizabeth 6013 tel/fax: (041) 581 2421	IVUNYELWE APPROVED INJINELI / ENG. UMHLA / DATE	IVUNYELWE APPROVED INJINELI / ENG. UMHLA / DATE		IPROJETHI / PROJECT CHOJE WIND FARM UMZOBONKCAZA / DWG DESCRIPTION WIND GARDEN DEVELOPMENT AREA - LAYOUT 2 INANI LOMZOBO / DWG.NO. 1600-E1-WG-SDP-LAYOUT2_REV02																
	<table border="1"> <thead> <tr> <th>INANI No.</th> <th>UMHLA DATE</th> <th>INKCAZA DESCRIPTION</th> <th>IVUNYELWE APPROVED</th> </tr> </thead> <tbody> <tr><td> </td><td> </td><td> </td><td> </td></tr> <tr><td> </td><td> </td><td> </td><td> </td></tr> <tr><td> </td><td> </td><td> </td><td> </td></tr> <tr><td> </td><td> </td><td> </td><td> </td></tr> </tbody> </table>				INANI No.	UMHLA DATE	INKCAZA DESCRIPTION	IVUNYELWE APPROVED																				
INANI No.	UMHLA DATE	INKCAZA DESCRIPTION	IVUNYELWE APPROVED																									