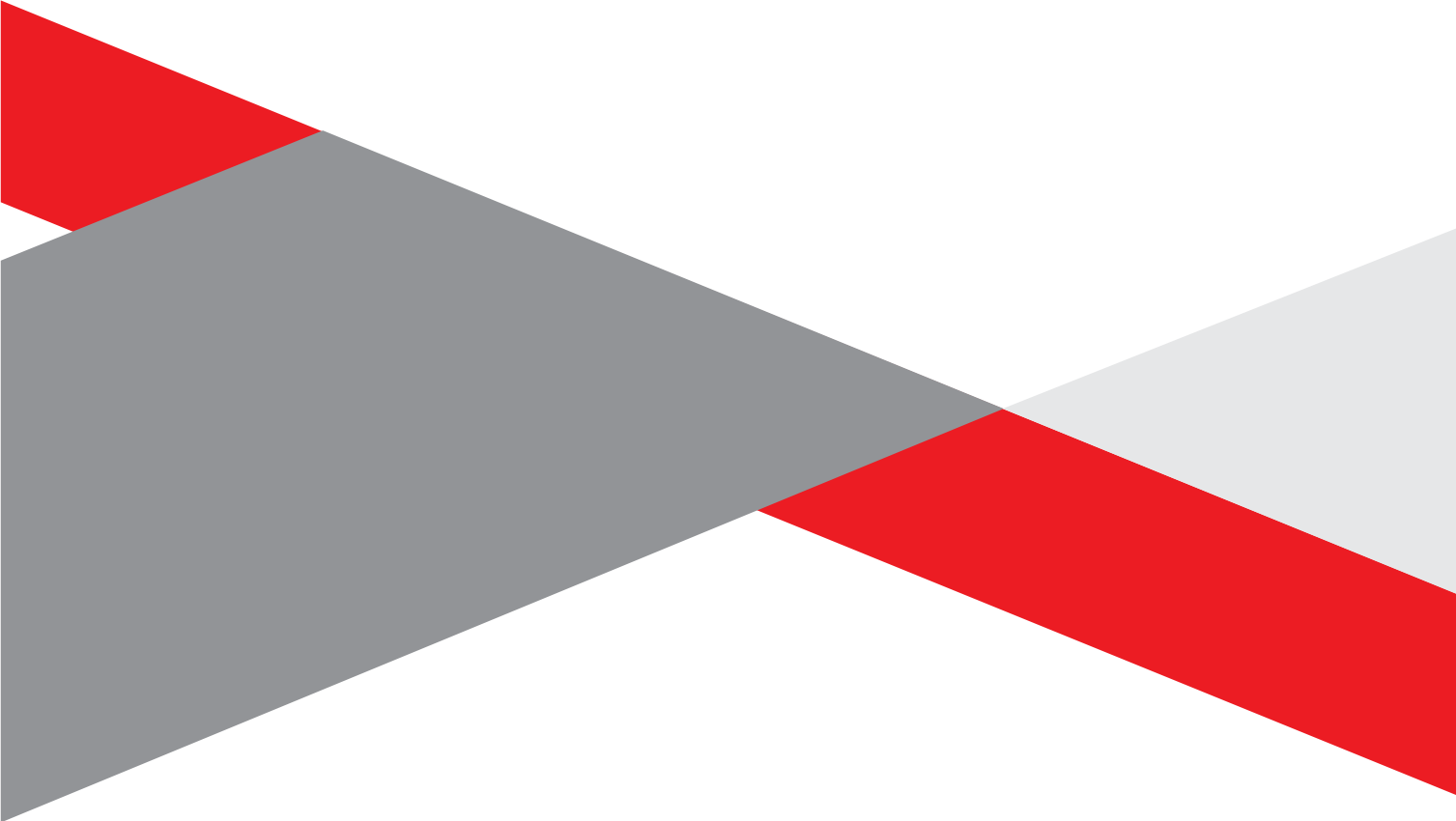


APPENDIX C3
SITE NOTICES AND NEWSPAPERS



NOTICE OF ENVIRONMENTAL IMPACT ASSESSMENT AND PUBLIC PARTICIPATION PROCESS FOR THE PROPOSED DEVELOPMENT OF THE RBGP3 2000MW COMBINED CYCLE POWER PLANT, RICHARDS BAY IDZ ZONE 1F, RICHARDS BAY, KWAZULU-NATAL

Project Name: Proposed 2000MW Combined Cycle Power Plant (CCPP) located on various erven within the Richards Bay IDZ Phase 1F, Richards Bay, Kwazulu Natal Province

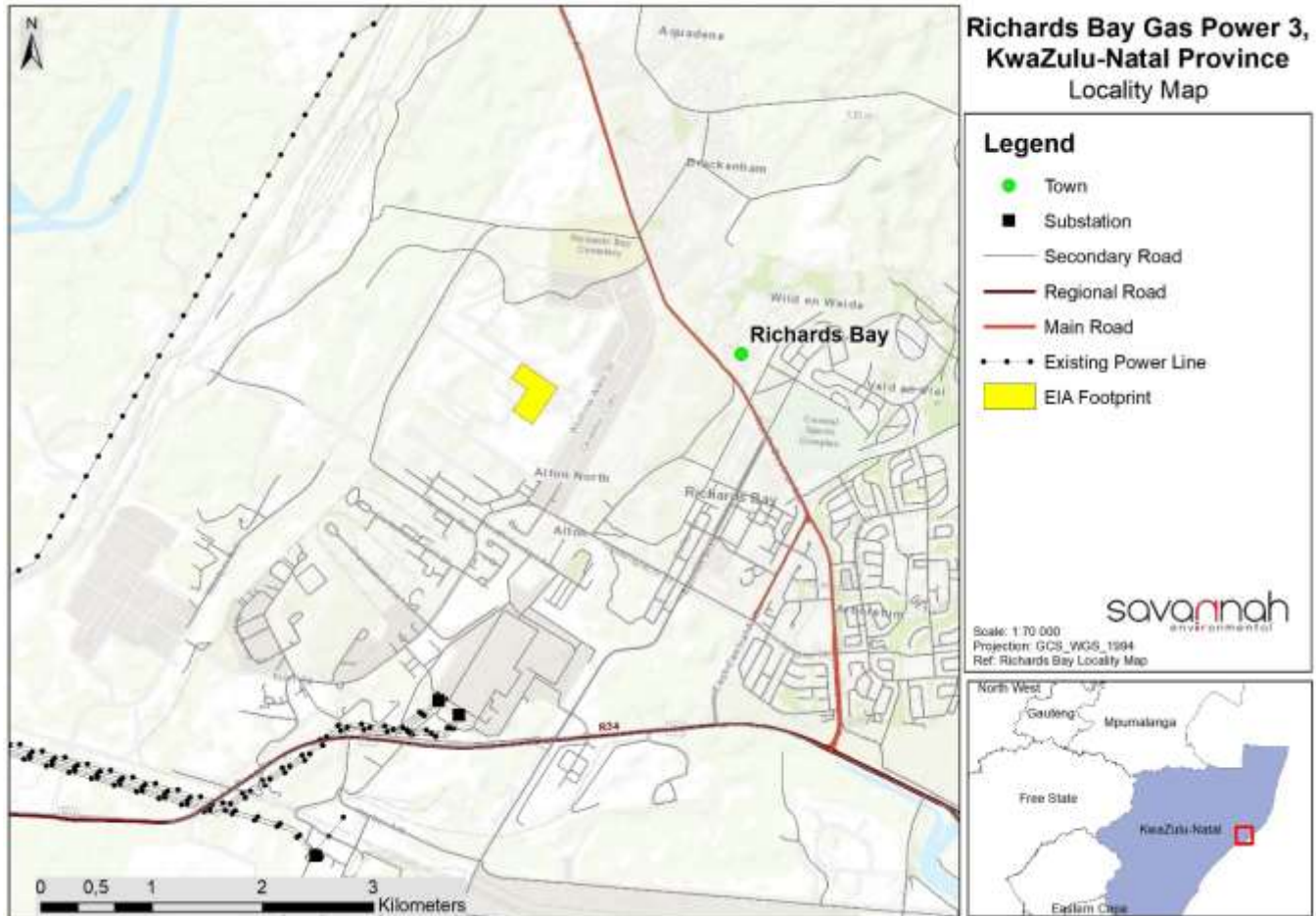
Applicant: Phakwe Richards Bay Gas Power 3 (Pty) Ltd

Proposed Activity: Phakwe Richards Bay Gas Power 3 (Pty) Ltd (PRBGP3) proposes the development of a combined cycle (CC) gas to power plant, with a capacity of up to 2 000MW, on various erven within the Richards Bay IDZ Phase 1F, Richards Bay. The proposed project is to be known as the Phakwe Richards Bay Gas Power 3 CCPP. The project site is located approximately 5km north-east of Richards Bay and 1km north of the suburb of Alton, within the jurisdiction of the City of uMhlathuze Local Municipality and the King Cetshwayo District Municipality, KwaZulu-Natal Province. The power plant will operate at mid-merit to baseload duty and will include the following main infrastructure:

- » A number of gas turbines for the generation of electricity through the use of natural gas (liquid or gas forms), or a mixture of Natural gas and Hydrogen (in a proportion scaling up from 20% H₂) as fuel source, operating all turbines at mid-merit or baseload (estimated 16 to 24 hours daily operation).
- » Exhaust stacks associated with each gas turbine.
- » A number of Heat Recovery Steam Generator (HRSG) to generate steam by capturing the heat from the turbine exhaust.
- » A number of steam turbines to generate additional electricity by means of the steam generated by the HRSG.
- » The water treatment plant will demineralise incoming water from municipal or similar supply, to the gas turbine and steam cycle requirements. The water treatment plant will produce two parts demineralised water and reject one-part brine, which will be discharged to the R IDZ stormwater system.
- » Steam turbine water system will be a closed cycle with air cooled condensers. Make-up water will be required to replace blow down.
- » Air cooled condensers to condensate used steam from the steam turbine.
- » Compressed air station to supply service and process air.
- » Water pipelines and water tanks for storage and distributing of process water. (Potential sourcing of alternative water outside RB IDZ supply (Municipality))
- » Water retention pond
- » Closed Fin-fan coolers to cool lubrication oil for the gas turbines
- » Gas generator Lubrication Oil System.
- » Gas pipeline supply conditioning process facility. Please note, gas supply will be via dedicated pipeline from the proposed Transnet supply pipeline network of Richards Bay (the location of this network has not yet been confirmed) or, alternatively directly from the Regasification facilities at RB Harbour. The gas pipeline will be separately authorized.
- » Site water facilities including potable water, storm water, waste water
- » Fire water (FW) storage and FW system
- » Diesel emergency generator for start-up operation.
- » Onsite fuel conditioning including heating system.
- » All underground services: This includes stormwater and wastewater.
- » Ancillary infrastructure
- » Electrical facilities
- » Service infrastructure

Project Location: The development is proposed on the following properties, situated within Phase 1F of the Richards Bay Industrial Development Zone (RIDZ) located approximately 5km north east of Richards Bay and 1km north of the suburb of Alton:

Erf Name	Surveyor General Erf No.	Surveyor General Portion No.	SG 21-digit ID	RBIDZ plot allocation
Unnamed	16674	0	NOGV04210001667400000	Erf 16674
Unnamed	9042	0	NOGV04210000904200000	Service infrastructure (water servitude)
Unnamed	8822	0	NOGV04210000882200000	Erf 16819
Unnamed	8821	0	NOGV04210000882100000	Erf 16820
Unnamed	8820	0	NOGV04210000882000000	Erf 17442



Application for Environmental Authorisation: An application for Environmental Authorisation (EA) in terms of the National Environmental Management Act (No. 107 of 1998) (NEMA) and 2014 EIA Regulations (GNR 326) is being undertaken for the project. The application is being supported by a Scoping and Environmental Impact Assessment (S&EIA) process. Savannah Environmental (Pty) Ltd has been appointed as the independent environmental consultant responsible to undertake the EIA and Public Participation process in support of the application for EA.

To obtain further information on the project and to register on the project's database, please submit your name, contact information and interest in the project, in writing, to Savannah Environmental.

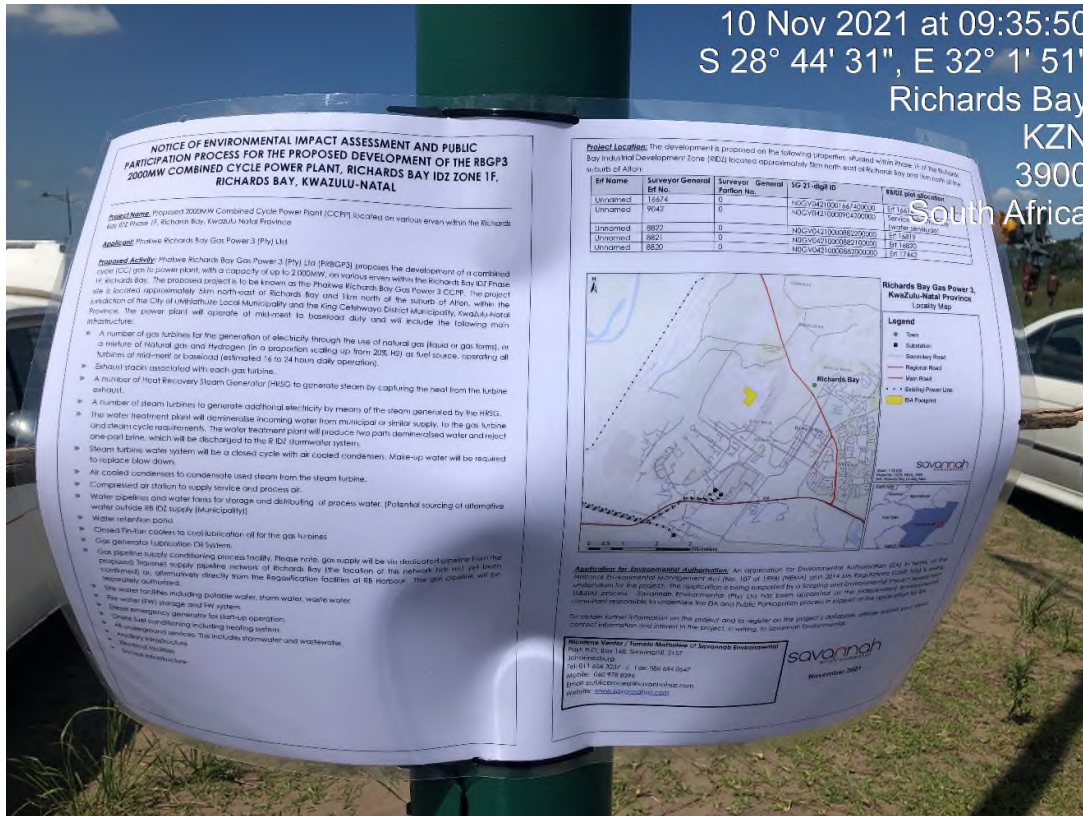
Nicolene Venter / Tumelo Mathulwe of Savannah Environmental

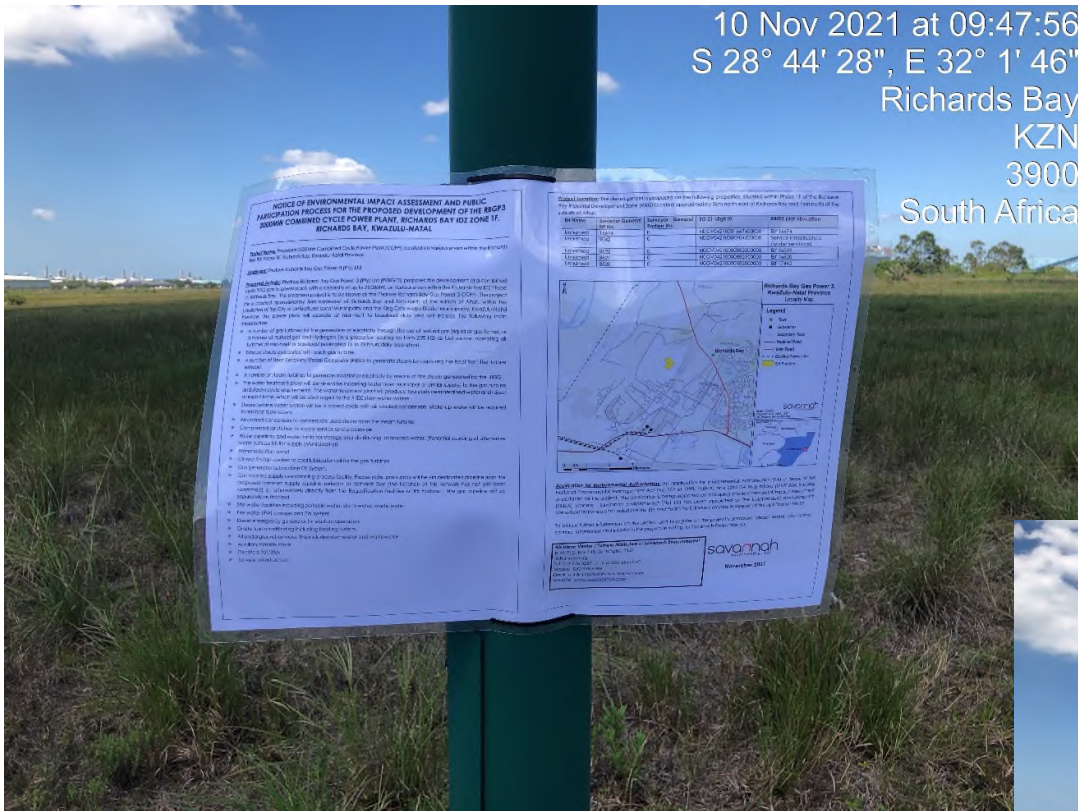
Post: P.O. Box 148, Sunninghill, 2157
Johannesburg
Tel: 011 656 3237 / Fax: 086 684 0547
Mobile: 060 978 8396
Email: publicprocess@savannahsa.com
Website: www.savannahsa.com

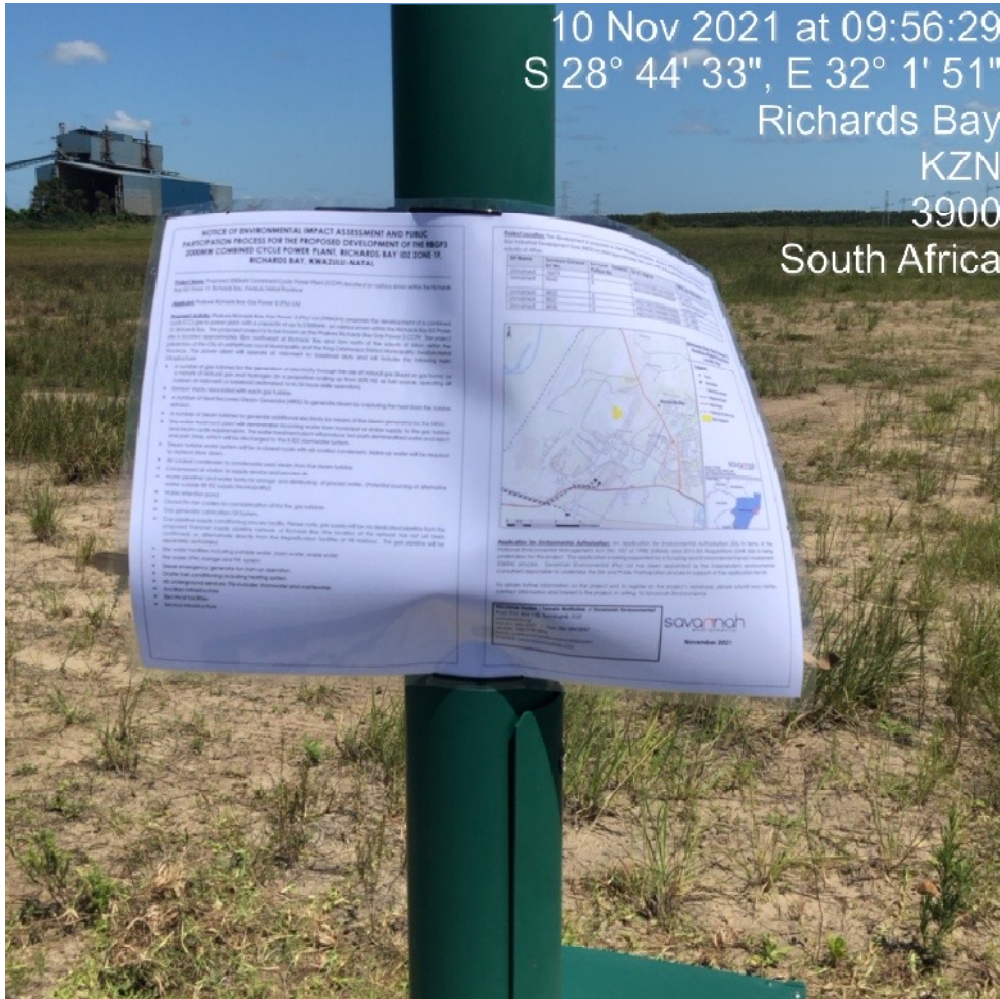
savannah
environmental

November 2021

PROOF OF SITE NOTICES (Date placed: Wednesday, 10 November 2021)







10 Nov 2021 at 09:56:29
 S 28° 44' 33", E 32° 1' 51"
 Richards Bay
 KZN
 3900
 South Africa



10 Nov 2021 at 09:35:57
 S 28° 44' 31", E 32° 1' 51"
 Richards Bay
 KZN
 3900
 South Africa

Process Notices

NOTICE OF ENVIRONMENTAL IMPACT ASSESSMENT AND PUBLIC PARTICIPATION PROCESS FOR THE PROPOSED DEVELOPMENT OF THE RBGP3 2000MW COMBINED CYCLE POWER PLANT, RICHARDS BAY IDZ ZONE 1F, RICHARDS BAY, KWAZULU-NATAL

Project Name: Proposed 2000MW Combined Cycle Power Plant (CCPP) located on various erven within the Richards Bay IDZ Phase 1F, Richards Bay, Kwazulu Natal Province

Applicant: Phakwe Richards Bay Gas Power 3 (Pty) Ltd

Proposed Activity: Phakwe Richards Bay Gas Power 3 (Pty) Ltd (PRBGP3) proposes the development of a combined cycle (CC) gas to power plant, with a capacity of up to 2 000MW, on various erven within the Richards Bay IDZ Phase 1F, Richards Bay. The proposed project is to be known as the Phakwe Richards Bay Gas Power 3 CCPP. The project site is located approximately 5km north-east of Richards Bay and 1km north of the suburb of Alton, within the jurisdiction of the City of uMhlatuze Local Municipality and the King Cetshwayo District Municipality, KwaZulu-Natal Province. The power plant will operate at mid-merit to baseload duty and will include the following main infrastructure:

- » A number of gas turbines for the generation of electricity through the use of natural gas (liquid or gas forms), or a mixture of Natural gas and Hydrogen (in a proportion scaling up from 20% H₂) as fuel source, operating all turbines at mid-merit or baseload (estimated 16 to 24 hours daily operation).
- » Exhaust stacks associated with each gas turbine.
- » A number of Heat Recovery Steam Generator (HRSG) to generate steam by capturing the heat from the turbine exhaust.
- » A number of steam turbines to generate additional electricity by means of the steam generated by the HRSG.
- » The water treatment plant will demineralise incoming water from municipal or similar supply, to the gas turbine and steam cycle requirements. The water treatment plant will produce two parts demineralised water and reject one-part brine, which will be discharged to the R IDZ stormwater system.
- » Steam turbine water system will be a closed cycle with air cooled condensers. Make-up water will be required to replace blow down.
- » Air cooled condensers to condensate used steam from the steam turbine.
- » Compressed air station to supply service and process air.
- » Water pipelines and water tanks for storage and distributing of process water. (Potential sourcing of alternative water outside RB IDZ supply (Municipality))
- » Water retention pond
- » Closed Fin-fan coolers to cool lubrication oil for the gas turbines
- » Gas generator Lubrication Oil System.
- » Gas pipeline supply conditioning process facility. Please note, gas supply will be via dedicated pipeline from the proposed Transnet supply pipeline network of Richards Bay (the location of this network has not yet been confirmed) or, alternatively directly from the Regasification facilities at RB Harbour. The gas pipeline will be separately authorized.
- » Site water facilities including potable water, storm water, waste water Fire water (FW) storage and FW system
- » Diesel emergency generator for start-up operation.
- » Onsite fuel conditioning including heating system.
- » All underground services: This includes stormwater and wastewater.
- » Ancillary infrastructure
- » Electrical facilities
- » Service infrastructure

Application for Environmental Authorisation: An application for Environmental Authorisation (EA) in terms of the National Environmental Management Act (No. 107 of 1998) (NEMA) and 2014 EIA Regulations (GNR 326) is being undertaken for the project. The application is being supported by a Scoping and Environmental Impact Assessment (S&EIA) process. Savannah Environmental (Pty) Ltd has been appointed as the independent environmental consultant responsible to undertake the EIA and Public Participation process in support of the application for EA.

To obtain further information on the project and to register on the project's database, please submit your name, contact information and interest in the project, in writing, to Savannah Environmental.

Nicolene Venter / Tumelo Mathulwe of Savannah Environmental

Post: P.O. Box 148, Sunninghill, 2157

Johannesburg

Tel: 011 656 3237 / Fax: 086 684 0547

Mobile: 060 978 8396

Email: publicprocess@savannahsa.com

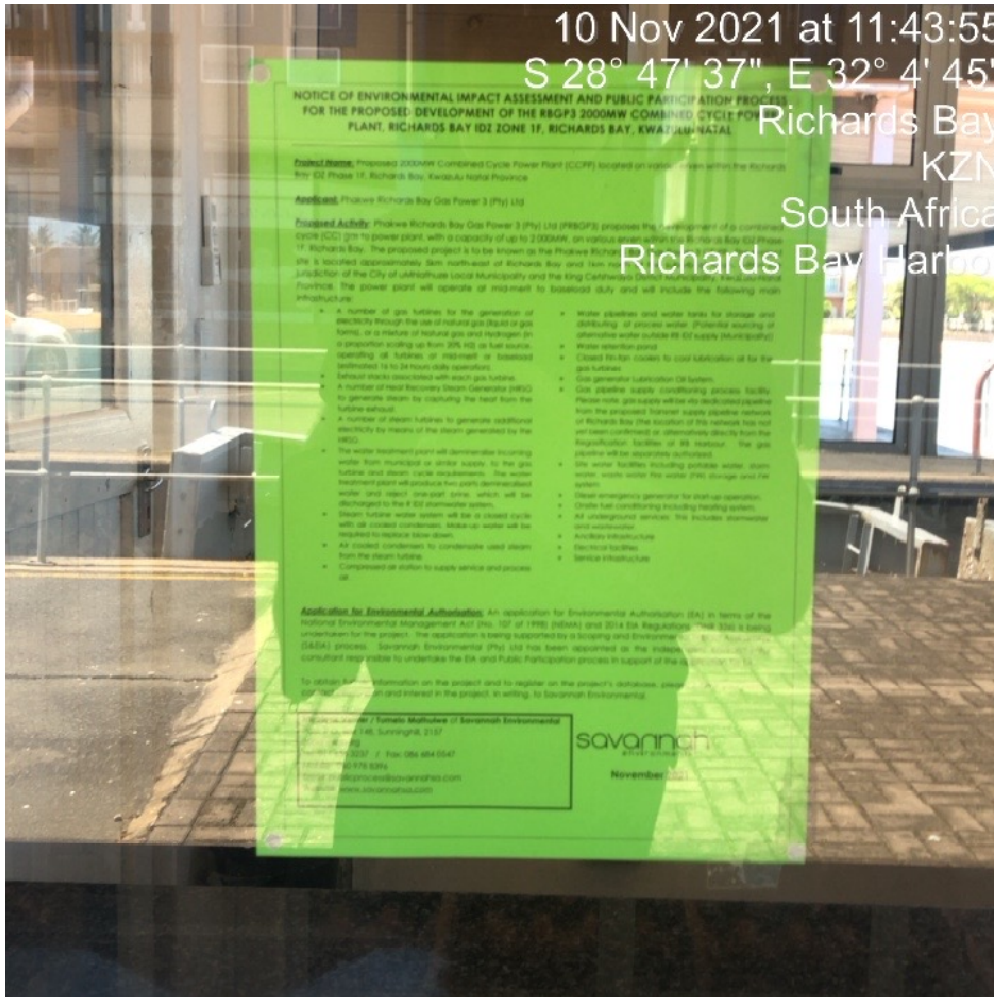
Website: www.savannahsa.com

savannah
environmental

November 2021

PROOF OF SITE NOTICES (Date placed: Wednesday, 10 November 2021)

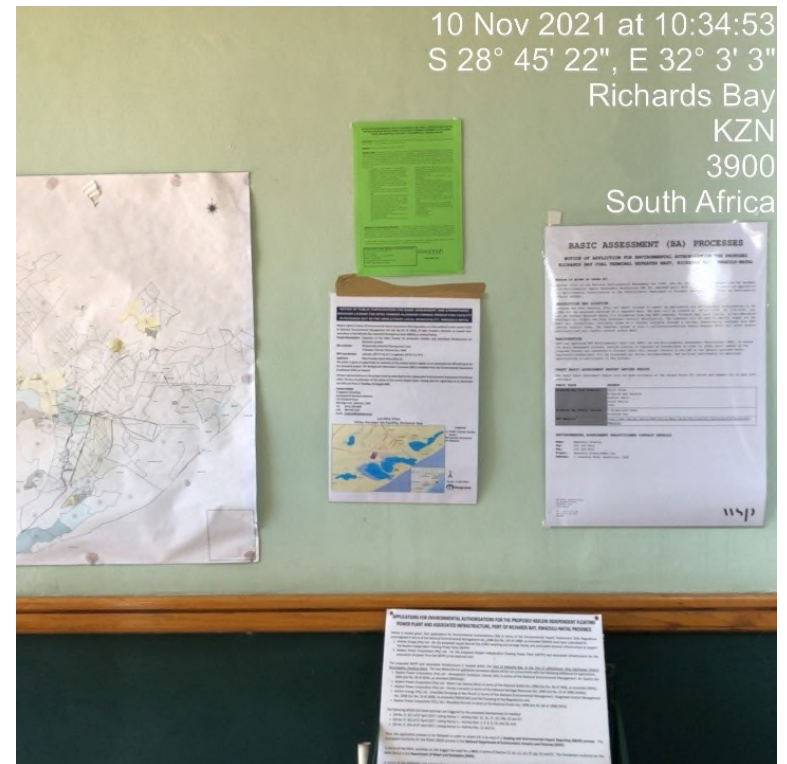
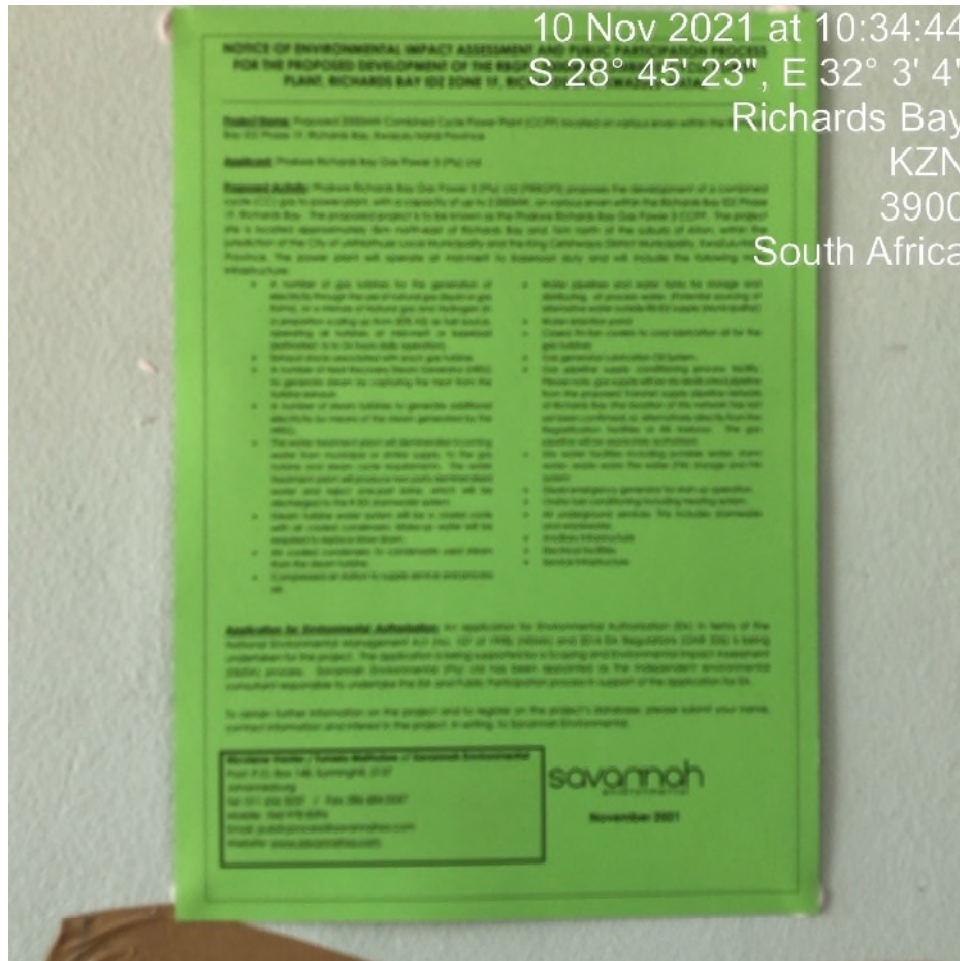
RICHARDS BAY HARBOUR



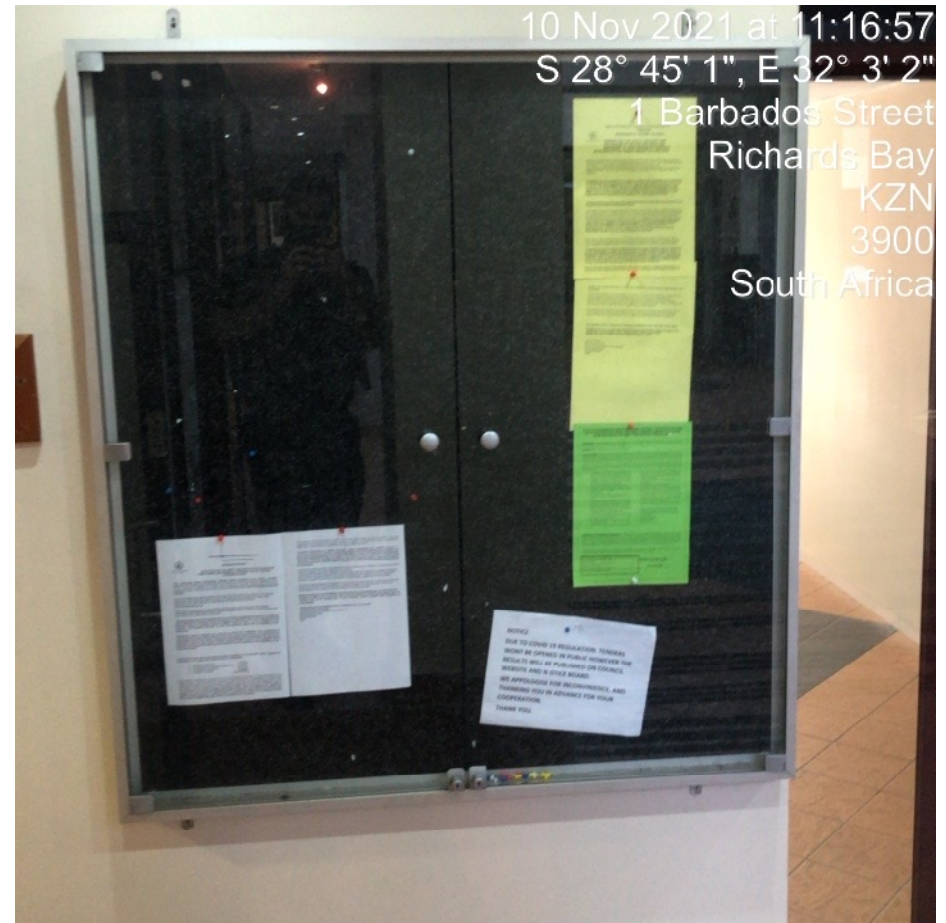
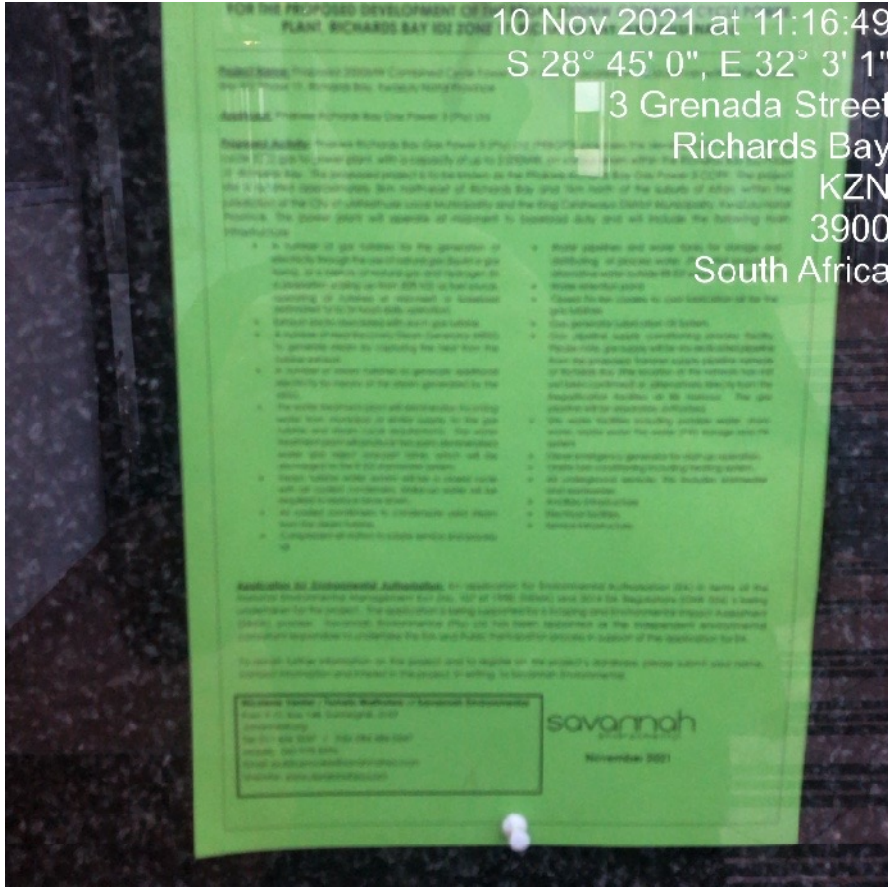
RICHARDS BAY LIBRARY



CITY OF uMHLATHUZE CIVIC CENTRE



CITY OF UMHLATHUZE TENDER BOARD



Advertisements

NOTICE OF ENVIRONMENTAL IMPACT ASSESSMENT REPORT AVAILABLE FOR REVIEW AND COMMENT FOR THE PROPOSED DEVELOPMENT OF THE PRBGP3 2000MW COMBINED CYCLE POWER PLANT, RICHARDS BAY IDZ ZONE 1F, RICHARDS BAY, KWAZULU-NATAL

Project Name: Proposed PRBGP3 2000MW Combined Cycle Power Plant (CCPP) located on various erven within the Richards Bay IDZ Phase 1F, Richards Bay, Kwazulu Natal Province

Applicant: Phakwe Richards Bay Gas Power 3 (Pty) Ltd

Proposed Activity: Phakwe Richards Bay Gas Power 3 (Pty) Ltd (PRBGP3) proposes the development of a combined cycle (CC) gas to power plant, with a capacity of up to 2 000MW, on various erven within the Richards Bay IDZ Phase 1F, Richards Bay. The power plant will operate at mid-merit to baseload duty and will include the following main infrastructure:

- » Up to 4 gas turbines for the generation of electricity through the use of natural gas (liquid or gas forms), or a mixture of Natural gas and Hydrogen (in a proportion scaling up from 20% H₂) as fuel source, operating all turbines at mid-merit or baseload (estimated 16 to 24 hours daily operation).
- » Exhaust stacks associated with each gas turbine.
- » Up to 4 Heat Recovery Steam Generator (HRSG) to generate steam by capturing the heat from the turbine exhaust.
- » A number of steam turbines to generate additional electricity by means of the steam generated by the HRSG.
- » The water treatment plant will demineralise incoming water from municipal or similar supply, to the gas turbine and steam cycle requirements. The water treatment plant will produce two parts demineralised water and reject one-part brine, which will be discharged to the R IDZ stormwater system.
- » Steam turbine water system will be a closed cycle with air cooled condensers. Make-up water will be required to replace blow down.
- » Air cooled condensers to condensate used steam from the steam turbine.
- » Compressed air station to supply service and process air.
- » Water pipelines and water tanks for storage and distributing of process water. (Potential sourcing of alternative water outside RB IDZ supply (Municipality))
- » Water retention pond
- » Closed Fin-fan coolers to cool lubrication oil for the gas turbines
- » Gas generator Lubrication Oil System.
- » Gas pipeline supply conditioning process facility. Please note, gas supply will be via dedicated pipeline from the proposed Transnet supply pipeline network of Richards Bay (the location of this network has not yet been confirmed) or, alternatively directly from the Regasification facilities at RB Harbour. The gas pipeline will be separately authorized.
- » Site water facilities including potable water, storm water, waste water Fire water (FW) storage and FW system
- » Diesel emergency generator for start-up operation.
- » Onsite fuel conditioning including heating system.
- » All underground services: This includes stormwater and wastewater.
- » Ancillary infrastructure
- » Electrical facilities
- » Service infrastructure

Project Location: The development is proposed on Erf 16820, Erf 16819, Erf 1/16674, and Subdivision of Erf 17442, situated within Phase 1F of the Richards Bay Industrial Development Zone (RIDZ) located approximately 5km north east of Richards Bay and 1km north of the suburb of Alton. The project site is located approximately 5km north-east of Richards Bay and 1km north of the suburb of Alton, within the jurisdiction of the City of uMhlatuze Local Municipality and the King Cetshwayo District Municipality, KwaZulu-Natal Province.

Application for Environmental Authorisation: An application for Environmental Authorisation (EA) in terms of the National Environmental Management Act (No. 107 of 1998) (NEMA) and 2014 EIA Regulations (GNR 326) has been submitted to the DFFE for the project. The application is being supported by a Scoping and Environmental Impact Assessment (S&EIA) process.

EIA Report available for review and comment: The EIA Report for the project is available for review and comment from **Monday, 06 June 2022** until **Friday, 22 July 2022**. The report is available for download from Savannah Environmental website: <https://savannahsa.com/public-documents/energy-generation/prbgp3-2000mw-ccpp/>. To obtain further information on the project and to register on the project's database, please submit your name, contact information and interest in the projects, in writing, to Savannah Environmental.

Invitation to Information Poster Display and Public Meeting: An Information Poster Display and Public meeting will be held as follow:

EVENT	DATE	TIME	VENUE
Information Poster Display	Thursday, 23 June 2022	15h00 to 16h30	Pelican Hall, Buscom Centre, Zululand Chamber of Business Forum Community Park, Guldengracht, Alton, Richards Bay
Public Meeting		17h00	

Nicolene Venter / Nondumiso Bulunga of Savannah Environmental
 Post: P.O. Box 148, Sunninghill, 2157, Johannesburg
 Tel: 011 656 3237 / Fax: 086 684 0547
 Mobile: 060 978 8396
 Email: publicprocess@savannahsa.com
 Website: www.savannahsa.com



**ISAZISO SOMBIKO WESIHLAZIYO SOMTHELELA KWEZEMVELO OSUTHOLAKALA UKUBA UBUYEKEZWE FUTHI KUPHAWULWE
NGAWO EKWAKHIWENI OKUHLONGOZWAYO KWE-PRBGP3 2000MW COMBINED CYCLE POWER PLANT, E-RICHARDS
BAY IDZ ZONE 1F, E-RICHARDS BAY, KWAZULU-NATAL**

Isigama Lephrojekthi: I-PRBGP3 2000MW Combined Cycle Power Plant (CCPP) ehlongozwayo ezindaweni eziningana e-Richards Bay IDZ Phase 1F, e-Richards Bay, eSifundeni saKwazulu Natal

Umfaki Wesicelo: Phakwe Richards Bay Gas Power 3 (Pty) Ltd

Umsebenzi Ohlongozwayo: I-Phakwe Richards Bay Gas Power 3 (Pty) Ltd (PRBGP3) ihlongoza ukwakha igesi ye-combinedcycle (CC) eya esikhungweni sikagesi, esinamandla afika ku-2 000MW, ezindaweni eziningana e-Richards Bay IDZ Phase 1F, e-Richards Bay. Isikhungo sikagesi sizosebenza ngokuphelela ugesi ngokwesidingo kuya ekuphehleni inani eliphansi elidingekayo futhi sizibandakanya ingqalasizinda eyinhloko elandelayo:

- » Ama-turbine egesi afika kwangu-4 okuphelela ugesi ngokusebenzisa igesi yemvelo (izinhlobo ezingamanzi noma zegesi), noma ingxube yegesi Yemvelo ne-Hydrogen (ngokwesikali esinyuka sisuka ku-20% H2) njengomthombo kawoyela, kusetshenziswa wonke ama-turbine aphelela ngokwesidingo noma aphelela inani eliphansi (okulinganiselwa emahoreni angu-16 kuya kwangu-24 okusebenza ngosuku).
- » Oshimula abahlobene ne-turbine yegesi ngayinye.
- » Ama-Heat Recovery Steam Generator (HRSG) afika kwangu-4 azophelela isitimu ngokuthatha ukushisa okuphuma kushimula we-turbine.
- » Ama-turbine estimu amaningi azophelela ugesi owengeziwe esebenzisa isitimu esakhiwe yi-HRSG.
- » Isikhungo sokuhlaza amanzi sizokhipha amaminerali emanzini angenayo evela kumasipala noma kumhlinzeki ofanayo, awayise kwi-turbine yegesi nasezimfunweni zomjikelezo westimu. Isikhungo sokuhlaza amanzi sizokhiqiza izingxenye ezimbili amanzi akhishwe amaminerali futhi silahle engxenye eyodwa yalawo agcwele usawoti, azolahlelwa kwisistimu yamanzi emvula e-R IDZ.
- » Isistimu yamanzi e-turbine yestimu izoba umjikelezo ovalokile njengoba izoba nama-air-cooled condenser. Kuzodingeka kufakwe amanzi ukuze kubuyiselwe lawo ohwamukile.
- » Ama-air cooled condenser azoshintsha istimu esisetshenzisiwe esivela kwi-turbine yestimu.
- » Isiteshi somoya ovalokile sizohlinzeka ngesevisi futhi sisebenze ngomoya.
- » Amapayipi amanzi namathange amanzi azogcina futhi ahambise amanzi azosebenza. (Kungenzeka amanye amanzi atholakale nangaphandle kwe-RB IDZ (kumaMasipala))
- » Ichibi lokugcina amanzi
- » Izibandisi ezivaliwe zama-Fin-fan ezizibandisa uwoyela wokugcoba ama-turbine egesi
- » I-Lubrication Oil System ye-generator yegesi.
- » Inqubo yokuhlinzeka ngolayini wepayipi legesi. Sicela uphawule, igesi izohlinzeka ngepayipi eliqondene nayo elivela kwinehiwekhi ehlongozwayo yase-Rocjards Bay (ukuthi le nethiwekhi izoba kuphi akukaqinisekiswa) yamapayipi ahlinzeka abakwa-Transnet noma, ingase ihlinzeka ngokuqondile ngezikhungo ze-Regasification e-RB Harbour. Ipayipi legesi lizogunyazwa ngokwehlukile.
- » Amanzi asezikhungweni, kubandakanya namanzi aphuzwayo, amanzi emvula, ukugcinwa kwamanzi angcolile amanzi okucisha umlilo (Fire water (FW) namasistimu e-FW
- » I-generator kadizili yezimo eziphuthumayo yokuqalisa umsebenzi.
- » Isistimu yasesikhungweni yokugcina uwoyela usebenza ngokufanele ebandakanya neyokugcina ukushisa.
- » Wonke amasevisi angaphansi komhlaba: Lokhu kubandakanya namanzi emvula namanzi angcolile.
- » Ingqalasizinda Elekelelayo
- » Izikhungo zikagesi
- » Ingqalasizinda yesevisi

Indawo Yephrojekthi: Kuhlangozwa isakhiwo ku-Erf 16820, Erf 16819, Erf 1/16674, naku-Subdivision of Erf 17442, aku-Phase 1F we-Richards Bay Industrial Development Zone (RIDZ) engaba ngu-5km enyakatho Mpumalanga ye-Richards Bay no-1km enyakatho yesabhabhu yase-Alton. Isikhungo sephrojekthi singaba ngu-5km enyakatho Mpumalanga ye-Richards Bay no-1km enyakatho yesabhabhu yase-Alton, eyisifunda seDolobha likaMasipala Wendawo yase-uMhlathuze noMasipala Wesifunda i-King Cetshwayo, eSifundeni KwaZulu-Natal.

Isicelo Sesigunyazo Sezemvelo: Isicelo seSigunyazo Sezemvelo (EA) ngokwemigomo yoMthetho Wokuphathwa Kwezemvelo Zesizwe (No. 107 ka-1998) (NEMA) neZiqondiso Zomthetho Ze-EIA zika-2014 (GNR 326) siye sathunyelwa e-DFFE ngale phrojekthi. Isicelo sisekelwa ngenqubo yeSihlaziyo Sobuanzi Nomthelela Kwezemvelo (Scoping and Environmental Impact Assessment (S&EIA)).

Umbiko We-EIA uyatholakala ukuba uhlolwe futhi kuphawulwe ngawo: Umbiko We-EIA yale projekthi uyatholakala ukuba uhlolwe futhi kuphawulwe ngawo kusukela ngoMsombuluko **06 Juni 2022** kuze kube **uLwesihlanu, 22 Julayi 2022**. Umbiko uyatholakala ukuba udawunilodwe kwiwebhusayithi ye-Savannah Environmental: <https://savannahsa.com/public-documents/energy-generation/prbap3-2000mw-ccpp/>. Ukuze uthole ulwazi olwengeziwe ngamaphrojekthi nokuba urejiste kumadathabheysi amaphrojekthi, sicela uthumele igama lakho, imininingwane yokuxhumana nentshisekelo yakho kumaphrojekthi, ngokubhalela, i-Savannah Environmental:

Isimemo Ekubonisweni Kwephosta Yolwazi Nomhlangano Womphakathi: Ukuboniswa Kwephosta Yolwazi Nomhlangano Womphakathi kuzokwenza ngalezi zinsuku:

UMHLANGANO	USUKU	ISIKHATHI	INDAWO
Ukuboniswa Kwephosta Yolwazi	ULwesine, 23 Juni 2022	15h00 kuya ku-16h30	Pelican Hall, Buscom Centre, Zululand Chamber of Business Forum Community Park, Guldengracht, Alton, Richards Bay
Nomhlangano Womphakathi		17H00	

Nicolene Venter / Nondumiso Bulunga of Savannah Environmental
 Ngencwadi: P.O. Box 148, Sunninghill, 2157
 Johannesburg
 Ucingo: 011 656 3237 / Ifeksi: 086 684 0547
 Iselula: 060 978 8396
 I-imeyili: publicprocess@savannahsa.com
 Iwebhusayithi: www.savannahsa.com



SCOPING PHASE

NOTICE OF ENVIRONMENTAL IMPACT ASSESSMENT AND PUBLIC PARTICIPATION PROCESS FOR THE PROPOSED DEVELOPMENT OF THE RBGP3 2000MW COMBINED CYCLE POWER PLANT, RICHARDS BAY IDZ ZONE 1F, RICHARDS BAY, KWAZULU-NATAL

Project Name: Proposed 2000MW Combined Cycle Power Plant (CCPP) located on various erven within the Richards Bay IDZ Phase 1F, Richards Bay, Kwazulu Natal Province

Applicant: Phakwe Richards Bay Gas Power 3 (Pty) Ltd

Proposed Activity: Phakwe Richards Bay Gas Power 3 (Pty) Ltd (PRBGP3) proposes the development of a combined cycle (CC) gas to power plant, with a capacity of up to 2 000MW, on various erven within the Richards Bay IDZ Phase 1F, Richards Bay. The proposed project is to be known as the Phakwe Richards Bay Gas Power 3 CCPP. The project site is located approximately 5km north-east of Richards Bay and 1km north of the suburb of Alton, within the jurisdiction of the City of uMhlathuze Local Municipality and the King Cetshwayo District Municipality, KwaZulu-Natal Province. The power plant will operate at mid-merit to baseload duty and will include the following main infrastructure:

- » A number of gas turbines for the generation of electricity through the use of natural gas (liquid or gas forms), or a mixture of Natural gas and Hydrogen (in a proportion scaling up from 20% H₂) as fuel source, operating all turbines at mid-merit or baseload (estimated 16 to 24 hours daily operation).
- » Exhaust stacks associated with each gas turbine.
- » A number of Heat Recovery Steam Generator (HRSG) to generate steam by capturing the heat from the turbine exhaust.
- » A number of steam turbines to generate additional electricity by means of the steam generated by the HRSG.
- » The water treatment plant will demineralise incoming water from municipal or similar supply, to the gas turbine and steam cycle requirements. The water treatment plant will produce two parts demineralised water and reject one-part brine, which will be discharged to the R IDZ stormwater system.
- » Steam turbine water system will be a closed cycle with air cooled condensers. Make-up water will be required to replace blow down.
- » Air cooled condensers to condensate used steam from the steam turbine.
- » Compressed air station to supply service and process air.
- » Water pipelines and water tanks for storage and distributing of process water. (Potential sourcing of alternative water outside RB IDZ supply (Municipality))
- » Water retention pond
- » Closed Fin-fan coolers to cool lubrication oil for the gas turbines
- » Gas generator Lubrication Oil System.
- » Gas pipeline supply conditioning process facility. Please note, gas supply will be via dedicated pipeline from the proposed Transnet supply pipeline network of Richards Bay (the location of this network has not yet been confirmed) or, alternatively directly from the Regasification facilities at RB Harbour. The gas pipeline will be separately authorized.
- » Site water facilities including potable water, storm water, waste water Fire water (FW) storage and FW system
- » Diesel emergency generator for start-up operation.
- » Onsite fuel conditioning including heating system.
- » All underground services: This includes stormwater and wastewater.
- » Ancillary infrastructure
- » Electrical facilities
- » Service infrastructure

Project Location: The development is proposed on Erf 16820, Erf 16819, Erf 1/16674, and Subdivision of Erf 17442, situated within Phase 1F of the Richards Bay Industrial Development Zone (RIDZ) located approximately 5km north east of Richards Bay and 1km north of the suburb of Alton

Application for Environmental Authorisation: An application for Environmental Authorisation (EA) in terms of the National Environmental Management Act (No. 107 of 1998) (NEMA) and 2014 EIA Regulations (GNR 326) is being undertaken for the project. The application is being supported by a Scoping and Environmental Impact Assessment (S&EIA) process. The Scoping Report the project is available for review and comment from **Friday, 12 November 2021 until Monday, 13 December 2021**. The reports are available for download from Savannah Environmental website: <https://savannahsa.com/public-documents/energy-generation/>. To obtain further information on the projects and to register on the projects' databases, please submit your name, contact information and interest in the projects, in writing, to Savannah Environmental:

Nicolene Venter / Tumelo Mathulwe of Savannah Environmental

Post: P.O. Box 148, Sunninghill, 2157

Johannesburg

Tel: 011 656 3237 / Fax: 086 684 0547

Mobile: 060 978 8396

Email: publicprocess@savannahsa.com

Website: www.savannahsa.com

savannah
environmental

