

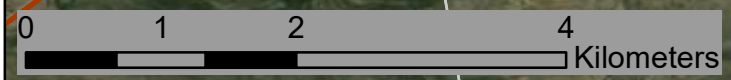
Great Karoo Wind Energy Facility

Combined Layout

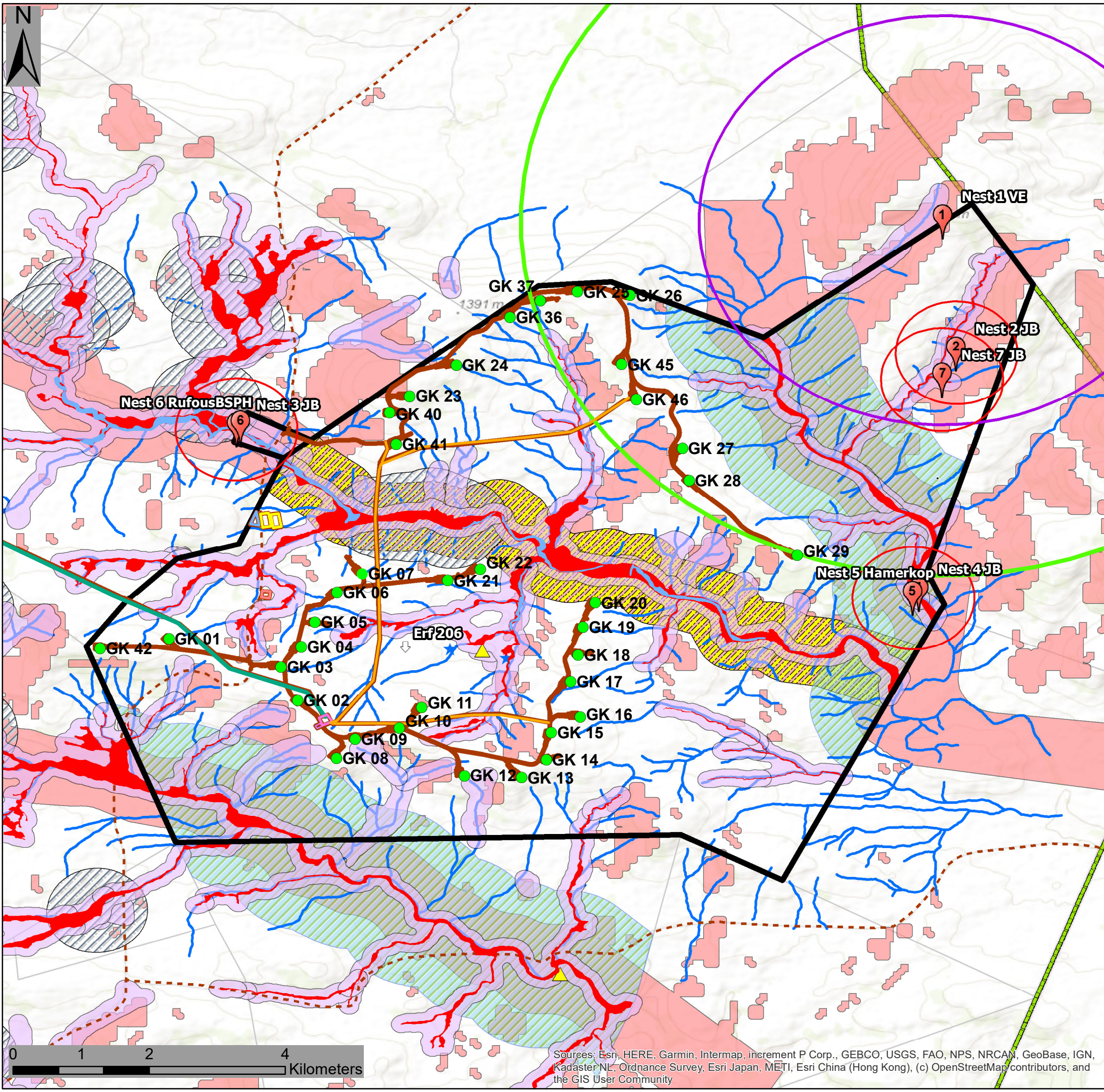
Legend

- Turbine
- Overhead MV cables
- Secondary Roads
- Site roads & underground MV cables
- 132kV OHL (seperate authorisation)
- Turbine Component Laydown Area
- Substation
- Site Camp
- O&M
- Concrete Batch Plant
- Provincial Boundary
- Farm Portion
- Wind Farm

Scale: 1: 50 000
 Projection: LO19
 Map ref: Great Karoo Layout Map



Source: Esri, DigitalGlobe, GeoEye, Earthstar Geographics, CNES/Airbus DS, USDA, USGS, AEX, Getmapping, Aerogrid, IGN, IGP, swisstopo, and the GIS User Community



Great Karoo Wind Energy Facility

Combined Layout & Sensitivity Map

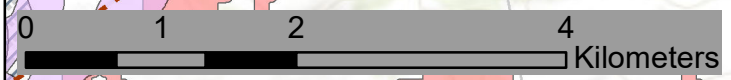
Legend

- Turbine
- Site roads & underground MV cables
- Secondary Roads
- 132kV OHL (seperate authorisation)
- Overhead MV cables
- Turbine Component Laydown Area
- Substation
- Site Camp
- O&M
- Concrete Batch Plant
- Wind Farm
- Provincial Boundary
- Farm Portion

Environmental Sensitivities

- ★ Heritage sites
- ▲ Noise Sensitive Development (NSD07)
- Wetlands 2021 (High Sensitivity)
- Watercourses (High Sensitivity)
- Drainage area buffer
- Bat Moderate Buffer 117m
- Bat High Sensitivity 571m
- River Buffer 500m (High Sensitivity)
- Streams Buffer (High Sensitivity)
- Avifaunal Exclusion Zones (High sensitivity)
- Riverlines 1.50000 GK with 18km buffer
- 3km No-Go Buffer (Verreaux's Eagle Nest)
- 750m No Go Buffer (Jackal Buzzard Nests)
- 5.2km Proactive Mitigation Buffer (VE nest)

Scale: 1: 50 000
 Projection: LO19
 Map ref: Great Karoo Sensitivity Map



Sources: Esri, HERE, Garmin, Intermap, increment P Corp., GEBCO, USGS, FAO, NPS, NRCAN, GeoBase, IGN, Kadaster NL, Ordnance Survey, Esri Japan, METI, Esri China (Hong Kong), (c) OpenStreetMap contributors, and the GIS User Community

