

Sources: Esri, HERE, Garmin, Intermap, increment P Corp., GEBCO, USGS, FAO, NPS, NRCAN, GeoBase, IGN, Kadaster NL, Ordnance Survey, Esri Japan, METI, Esri China (Hong Kong), (c) OpenStreetMap contributors, and the GIS User Community

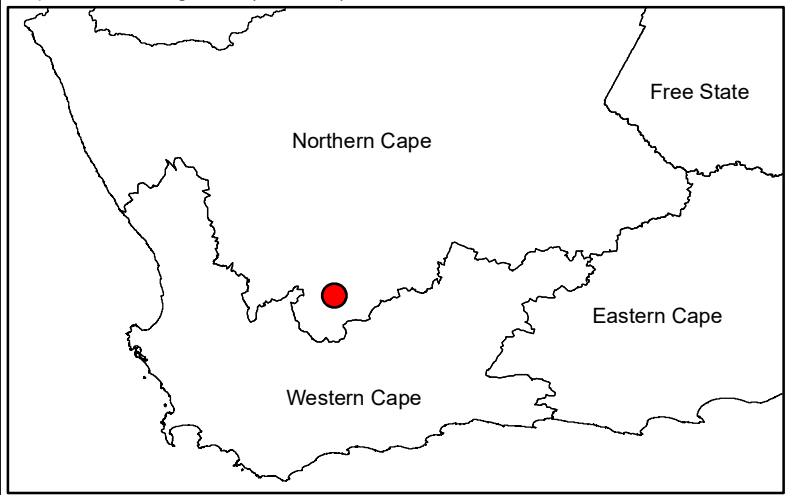
Komsberg West Wind Energy Facility

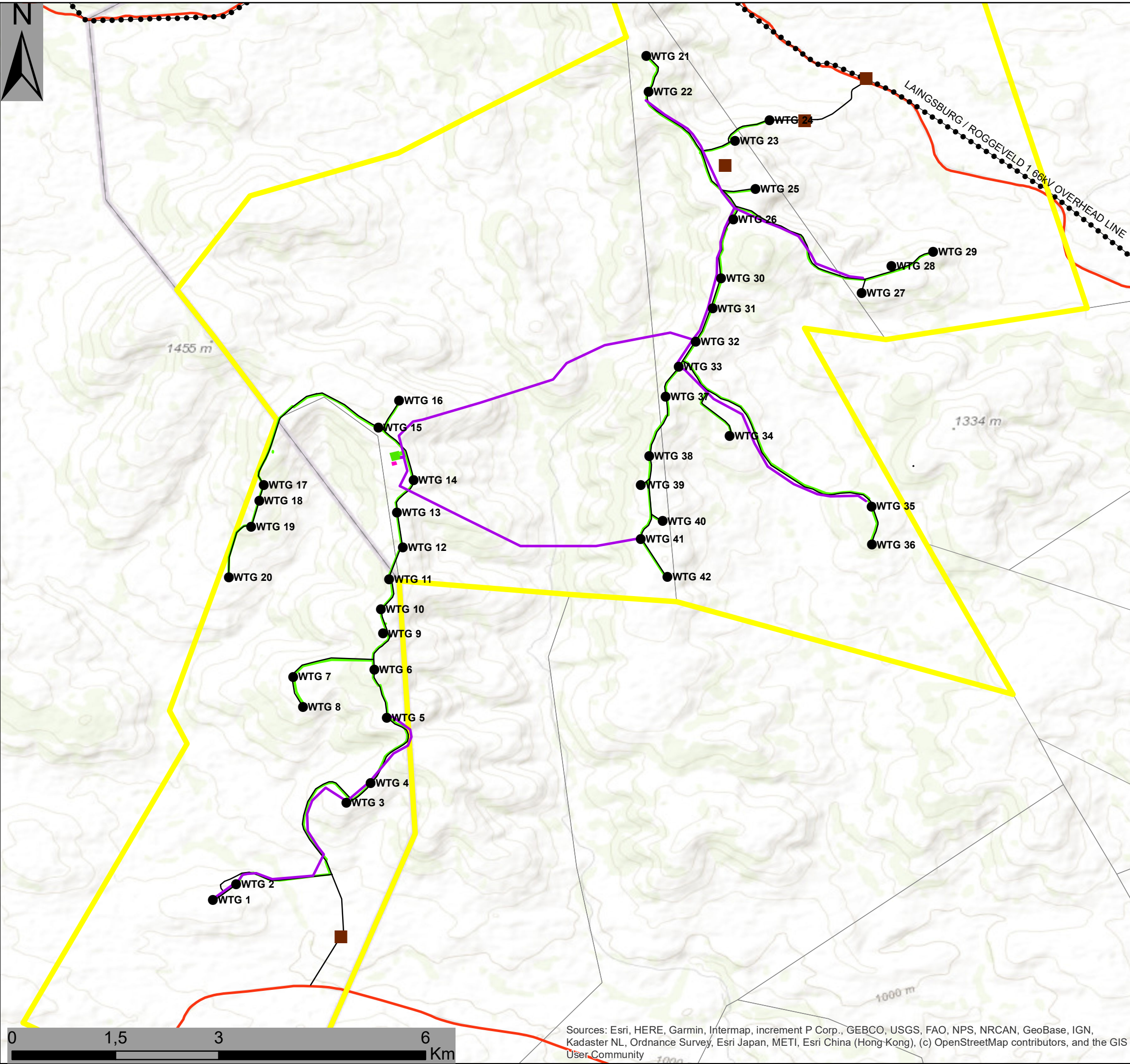
Locality Map

Legend

- Town
- Existing Substations
- - - Existing Lines
- Main Road
- Regional Road
- Komsberg West WEF Site
- Provincial Boundary

Scale: 1:185 000
 Projection: LO19
 Map ref: Komsberg West (29.07.21)





Komsberg West Wind Energy Facility

Layout Map

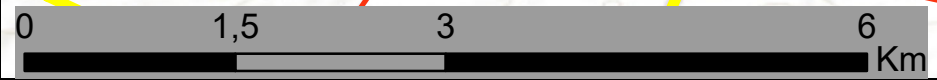
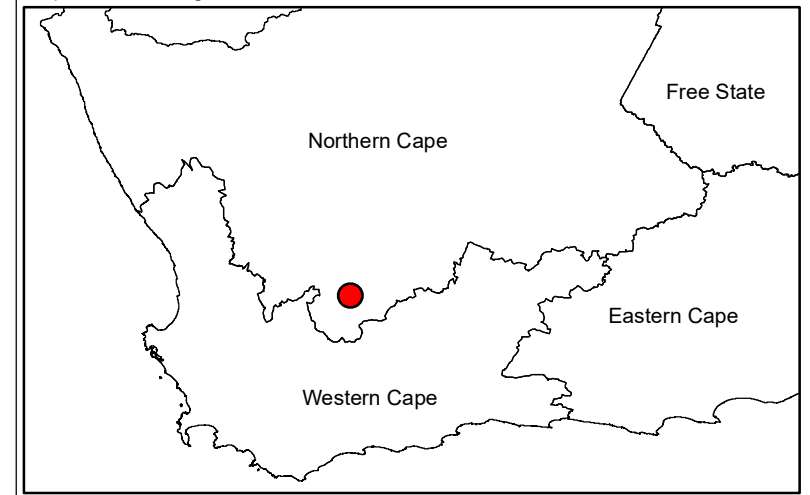
Legend

- Komsberg West WEF Site
- - - - - Existing Power Line
- Main Road
- Farm Portion

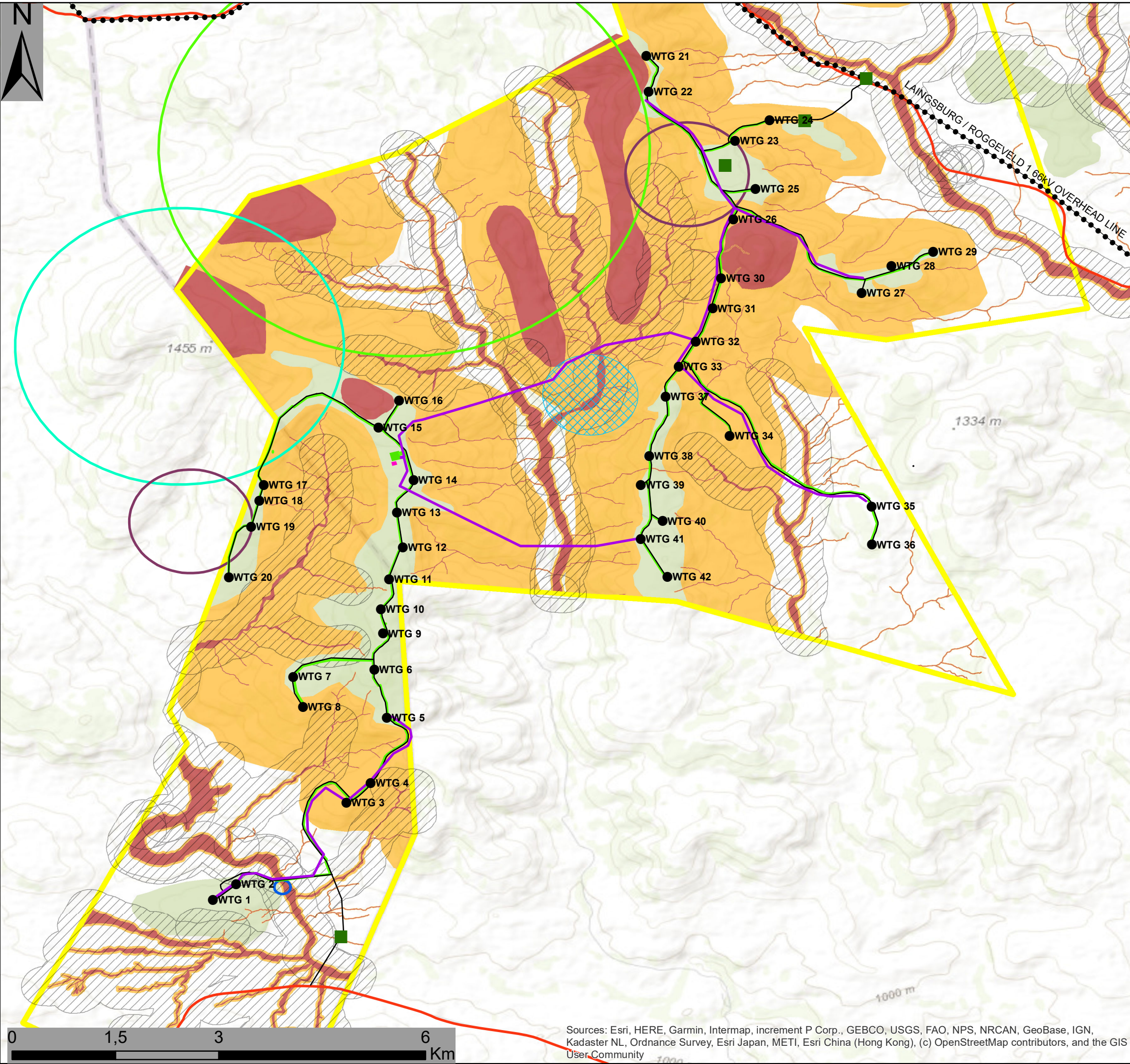
Layout Plan

- Turbines
- Construction Camp & Laydown Area
- MV Overhead Lines
- Access Roads
- MV Underground Cables
- O&M Building
- Facility Substation

Scale: 1:185 000
 Projection: LO19
 Map ref: Komsberg West



Sources: Esri, HERE, Garmin, Intermap, increment P Corp., GEBCO, USGS, FAO, NPS, NRCAN, GeoBase, IGN, Kadaster NL, Ordnance Survey, Esri Japan, METI, Esri China (Hong Kong), (c) OpenStreetMap contributors, and the GIS User Community



Komsberg West Wind Energy Facility

Layout & Sensitivity Map

Legend

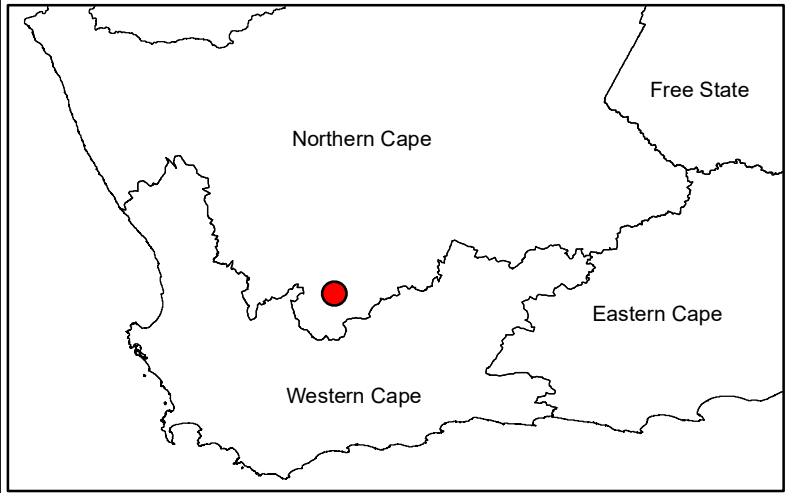
- Existing Power Line
- Public Road
- Komsberg West WEF Site
- Turbines
- Construction Camp & Laydown Area
- MV Overhead Lines
- Access Roads
- MV Underground Cables
- O&M Building
- Facility Substation

Layout Plan

- #### Environmental Sensitivities
- Jackal Buzzard Buffer (750m)
 - Verreaux Eagle Buffer No-Go for Turbines (2km)
 - Martial Eagle Buffer No-Go for Turbines (3km)
 - Heritage Sire No-Go Buffer (100m)
 - Bat Roots Buffer No-Go for Turbines (583m)
 - Bat Buffer No-Go for Turbine (276m)

- #### Ecological Sensitivity
- Medium-High
 - High
 - Very High (No-Go for Turbines)

Scale: 1:185 000
 Projection: LO19
 Map ref: Komsberg West



Sources: Esri, HERE, Garmin, Intermap, increment P Corp., GEBCO, USGS, FAO, NPS, NRCAN, GeoBase, IGN, Kadaster NL, Ordnance Survey, Esri Japan, METI, Esri China (Hong Kong), (c) OpenStreetMap contributors, and the GIS User Community

