

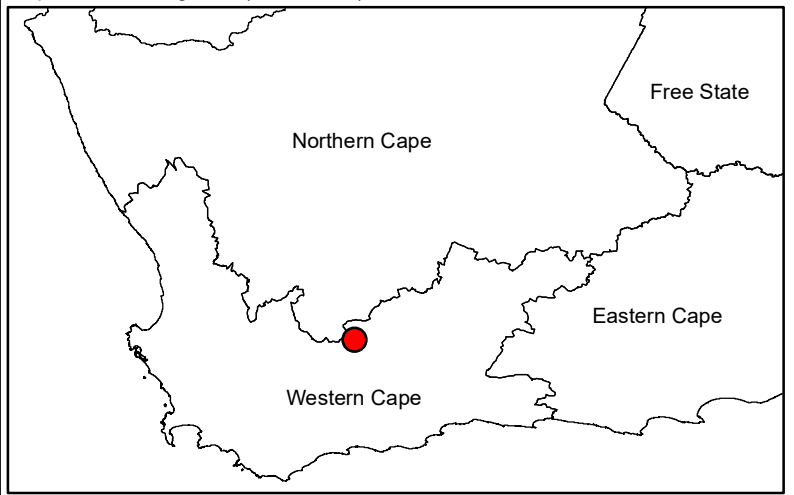
Komsberg East Wind Energy Facility

Locality Map

Legend

- Town
- Existing Substations
- Existing Power Line
- Regional Road
- Public Road
- Komsberg East WEF Site
- Provincial Boundary

Scale: 1:185 000
 Projection: LO19
 Map ref: Komsberg East (29.07.2021)




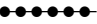


Sources: Esri, HERE, Garmin, Intermap, increment P Corp., GEBCO, USGS, FAO, NPS, NRCAN, GeoBase, IGN, Kadaster NL, Ordnance Survey, Esri Japan, METI, Esri China (Hong Kong), (c) OpenStreetMap contributors, and the GIS User Community










Komsberg East Wind Energy Facility

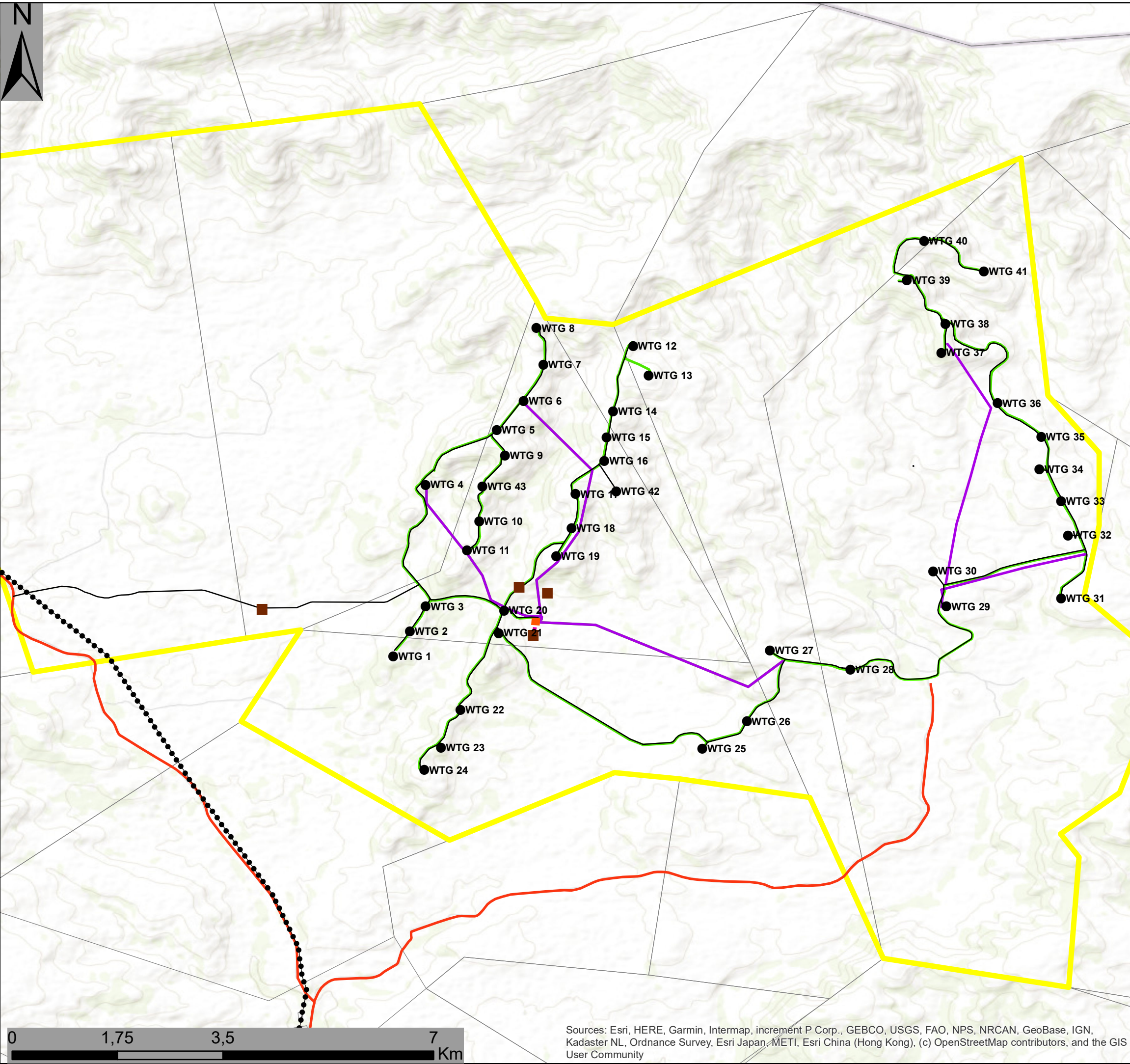
Layout Map

Legend

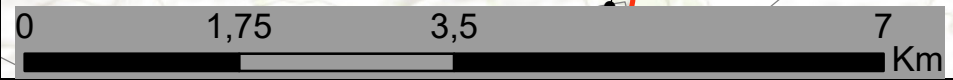
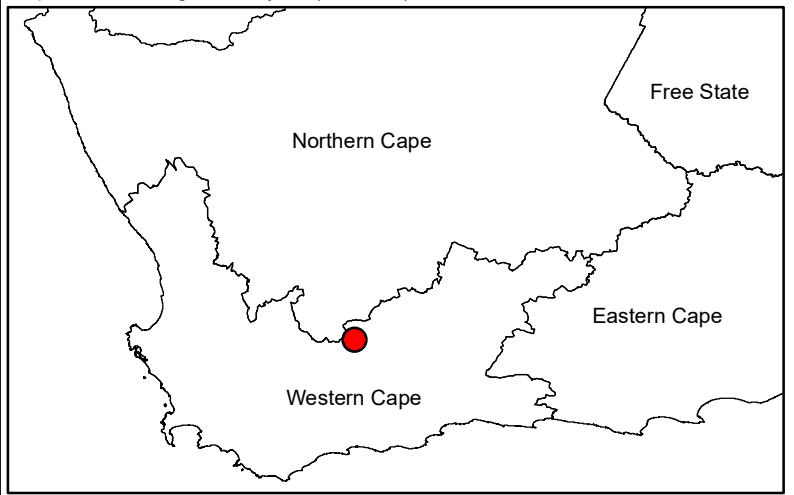
-  Public Road
-  Existing Power Line
-  Komsberg East WEF Site
-  Farm Portion

Layout Plan:

-  Turbines
-  Construction Camp & Laydown Area
-  Access Roads
-  MV Underground Cables
-  MV Overhead Lines
-  O&M Building
-  Substation



Scale: 1:185 000
 Projection: LO19
 Map ref: Komsberg East Layout (29.07.21)



Sources: Esri, HERE, Garmin, Intermap, increment P Corp., GEBCO, USGS, FAO, NPS, NRCAN, GeoBase, IGN, Kadaster NL, Ordnance Survey, Esri Japan, METI, Esri China (Hong Kong), (c) OpenStreetMap contributors, and the GIS User Community



Komsberg East Wind Energy Facility Layout & Sensitivity Map

Legend

- Public Road
- Komsberg East WEF Site
- Existing Power Line

Layout Plan:

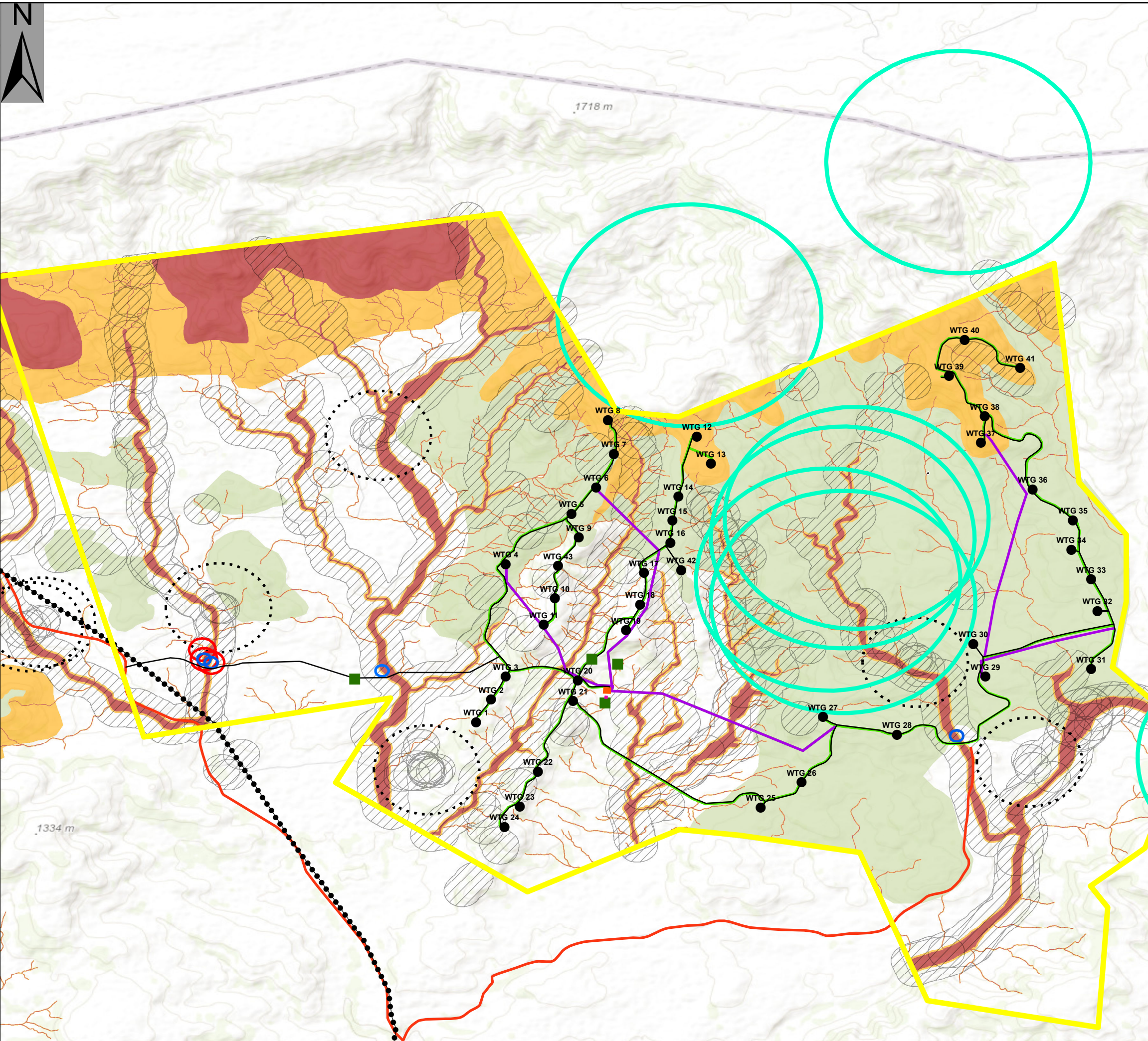
- Turbines
- Construction Camp & Laydown Area
- Access Roads
- MV Underground Cables
- MV Overhead Lines
- O&M Building
- Substation

Environmental Sensitivities

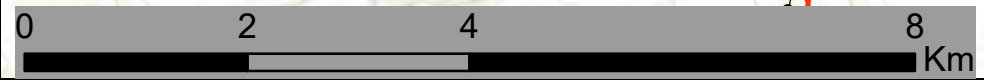
- Heritage Site No-Go Buffer (100m)
- Heritage Site No-Go Buffer (200m)
- Verreux Eagle Buffer No-go for Turbines (2km)
- Noise Buffers (No-Go for Turbines)
- Bats Buffer No-Go for Turbines (276m)

Ecological Sensitivity

- Medium-High
- High
- Very High (No-Go for Turbines)



Scale: 1:185 000
 Projection: LO19
 Map ref: Komsberg East Layout (29.07.21)



Sources: Esri, HERE, Garmin, Intermap, increment P Corp., GEBCO, USGS, FAO, NPS, NRCAN, GeoBase, IGN, Kadaster NL, Ordnance Survey, Esri Japan, METI, Esri China (Hong Kong), (c) OpenStreetMap contributors, and the GIS User Community

