

Figure 2.1: Spreekloof split EIA locality map (2012), showing turbine positions, substations and powerline infrastructure

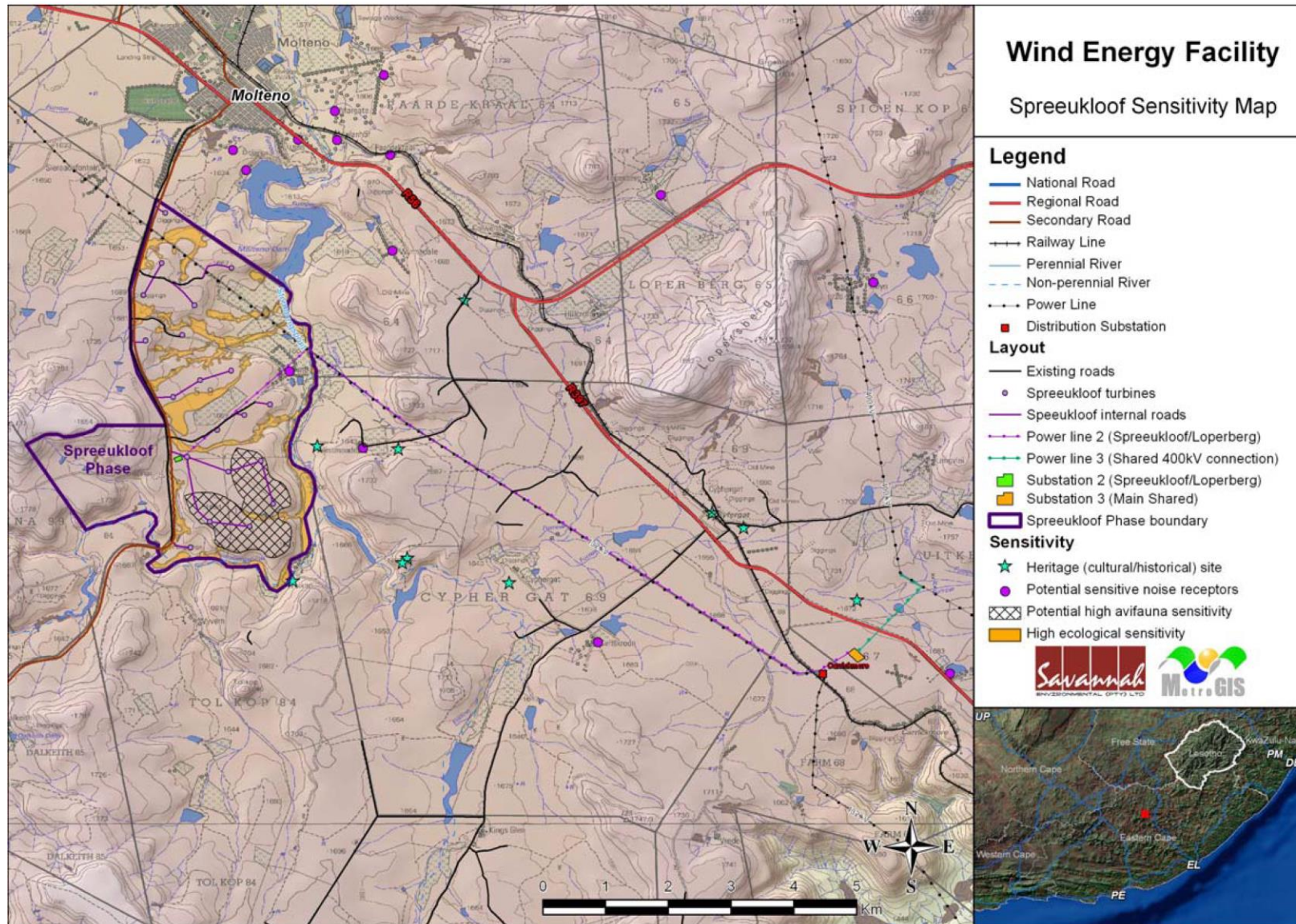


Figure 2.2: Spreeukloof split EIA layout overlain onto the identified sensitivities (2012) map.

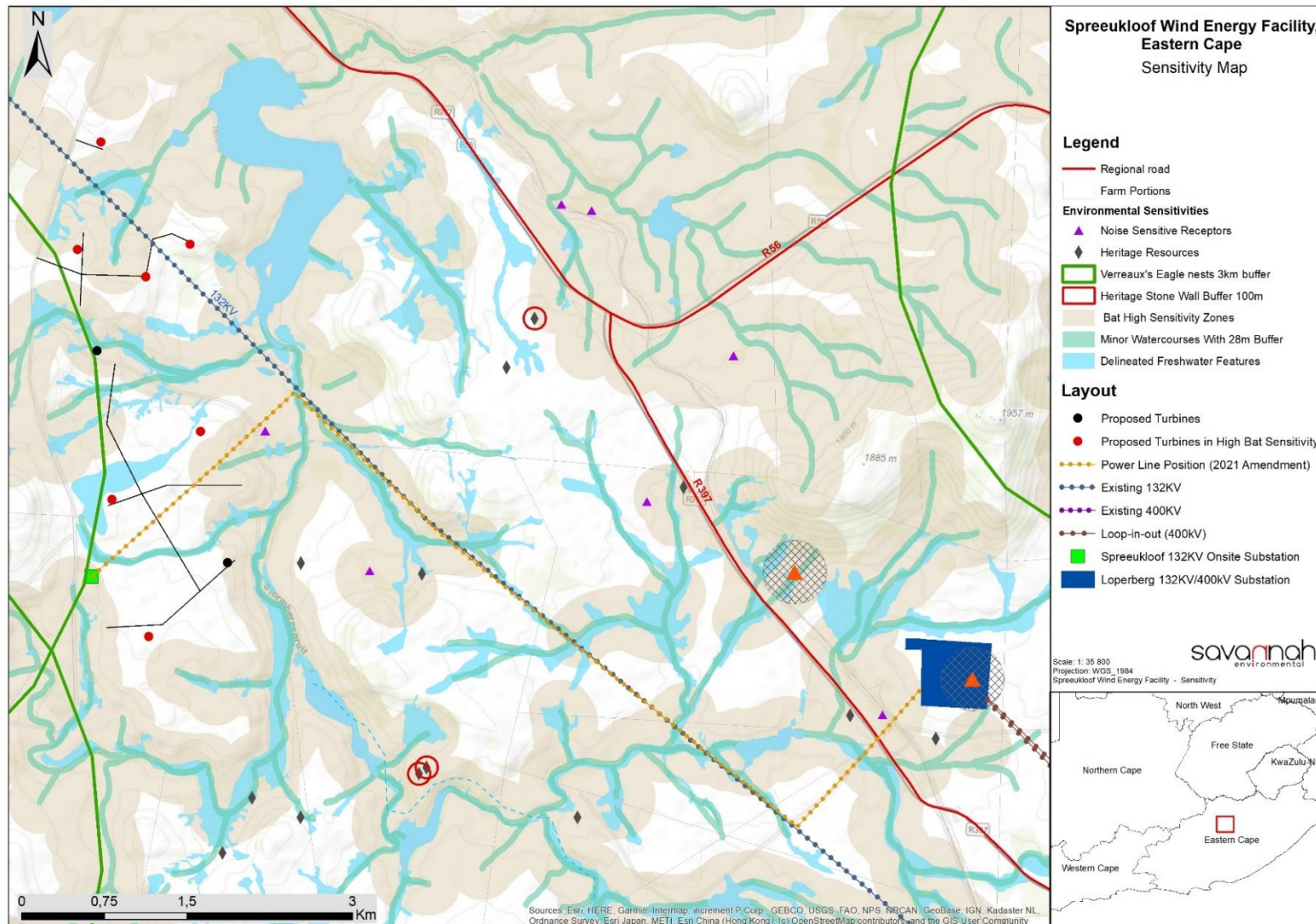


Figure 2.3: Wind farm layout showing the proposed amendment (2021) layout with reduced turbine number and revised turbine specifications overlain onto identified sensitivities as part of the amendment process.

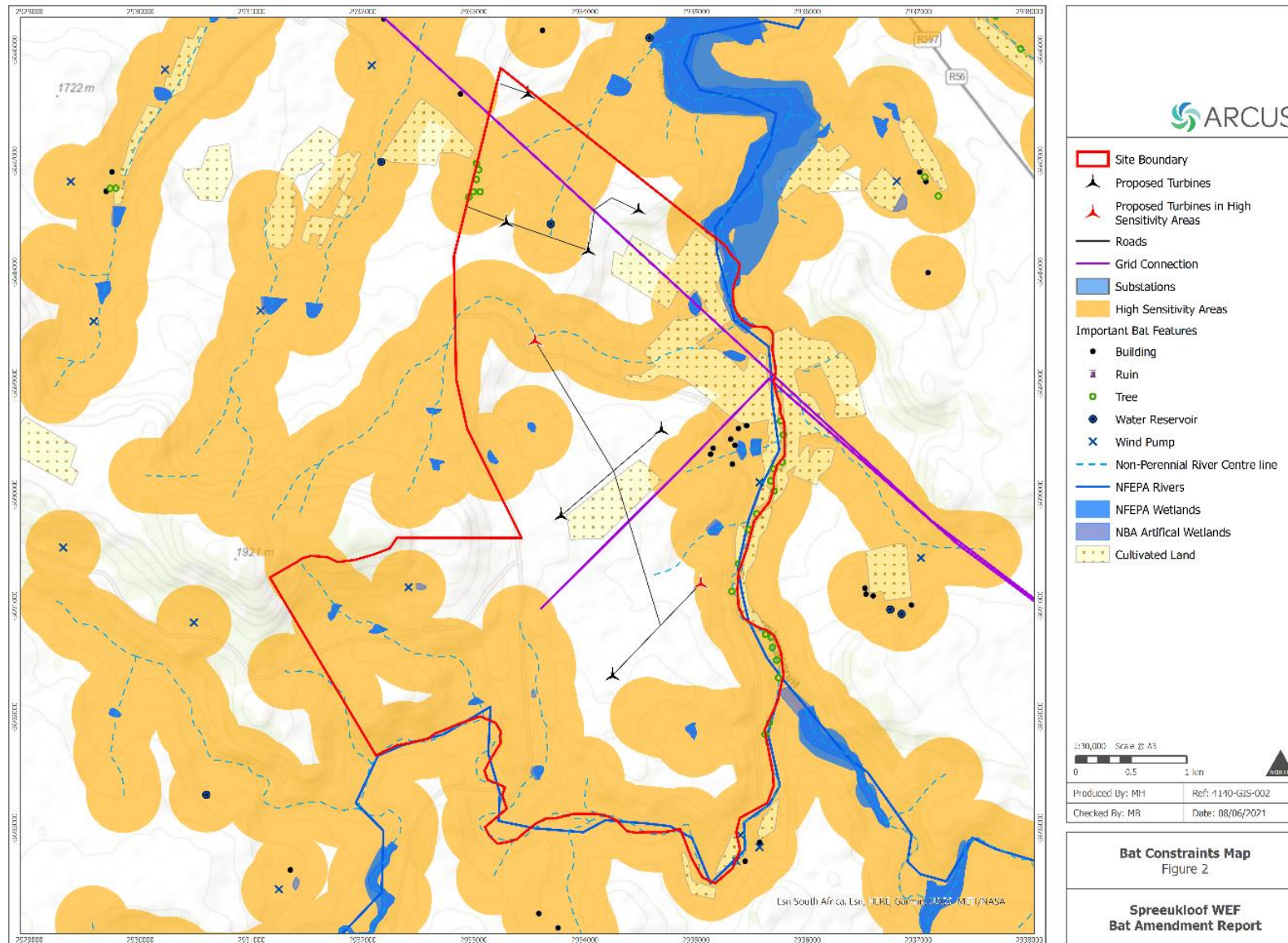


Figure 5.2: Bat sensitivity map for the amended scenario.

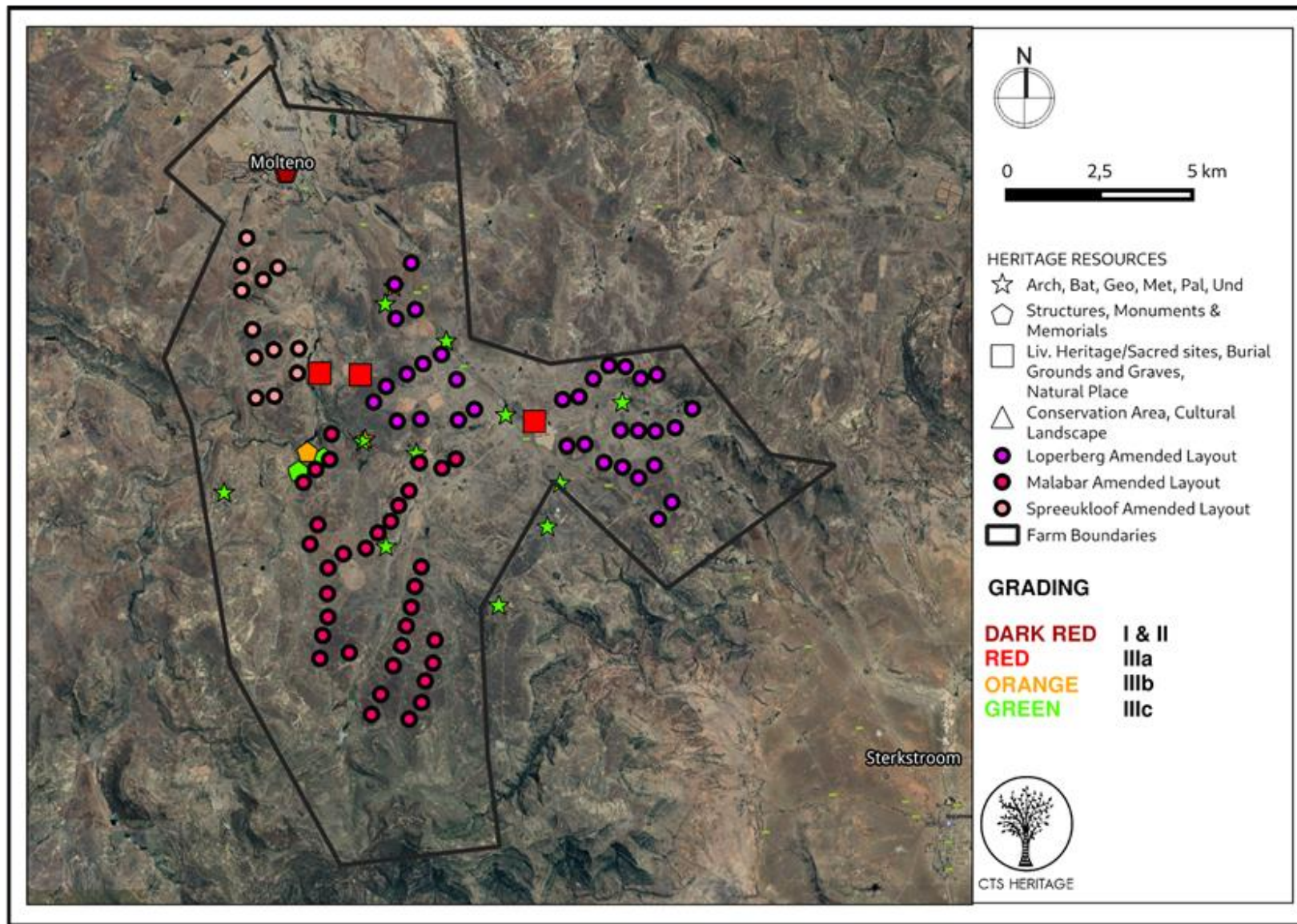


Figure 5.3: Heritage Resources Map previously identified within the study area, with SAHRIS Site IDs

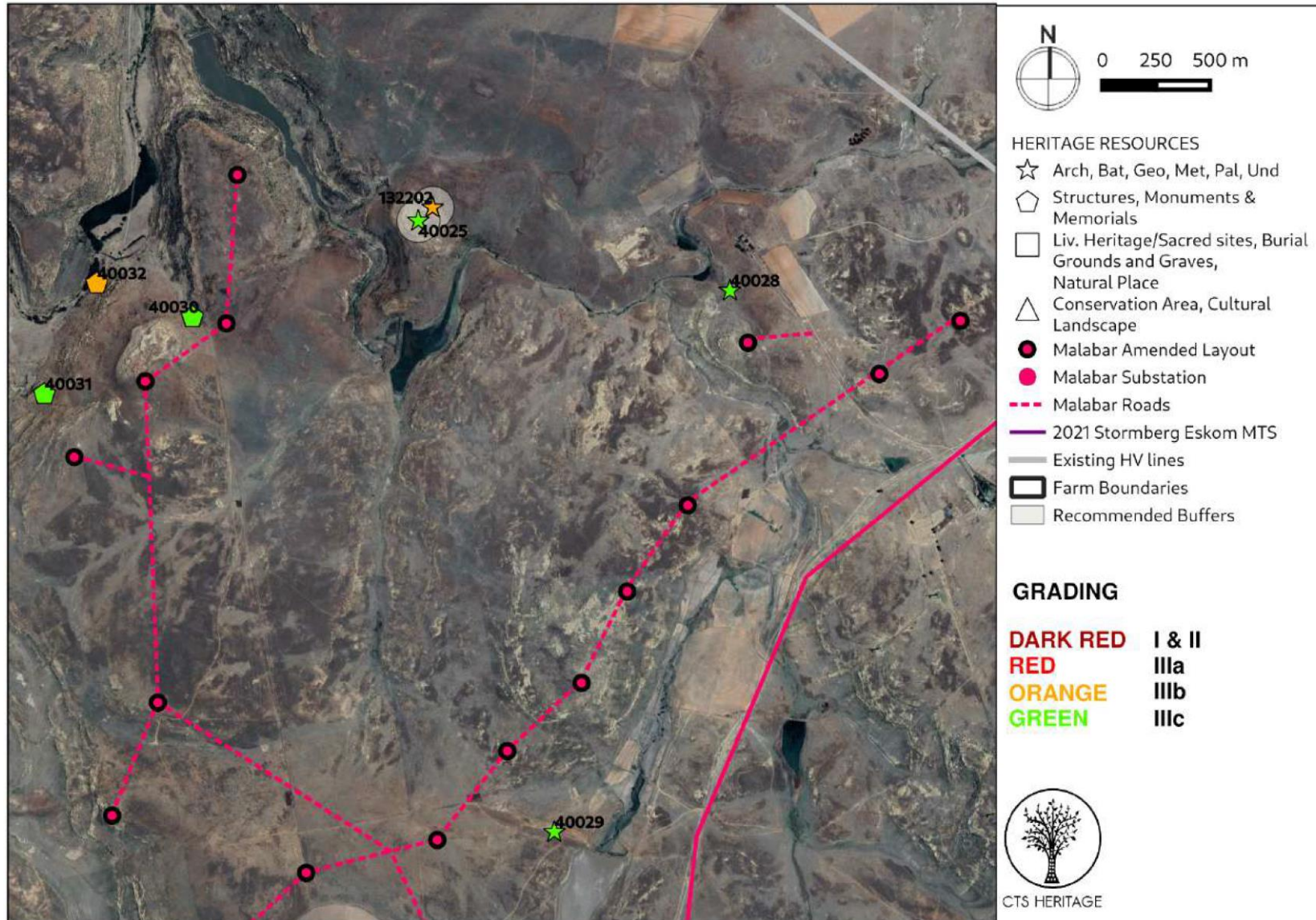


Figure 5.4: Heritage resources map of the amendment scenario layout (2021), including recommended specialist buffer areas

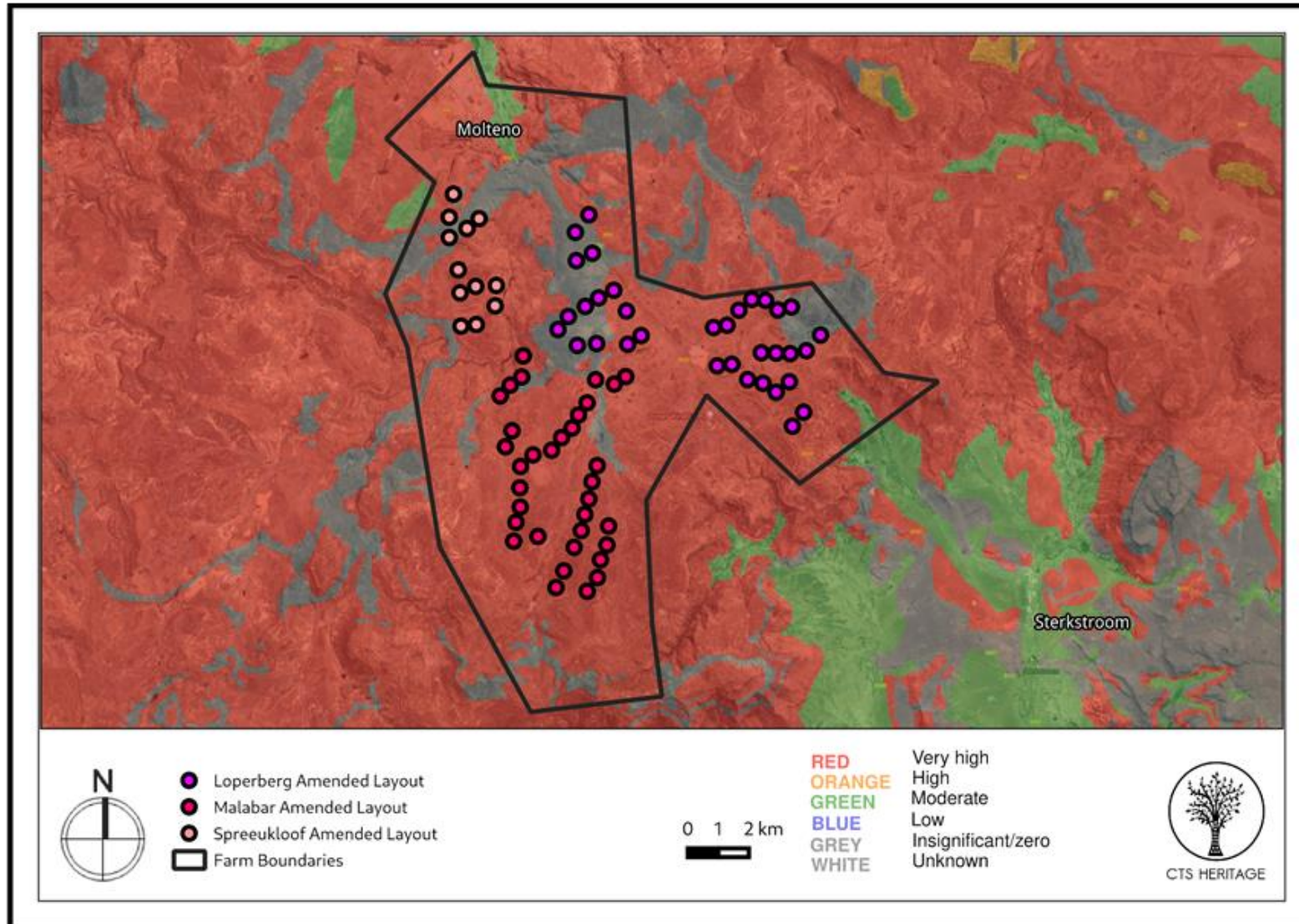


Figure 5.5: Palaeosensitivity Map indicating varied fossil sensitivity underlying the study area. Turbine locations for Spreeukloof WEF are indicated in Red



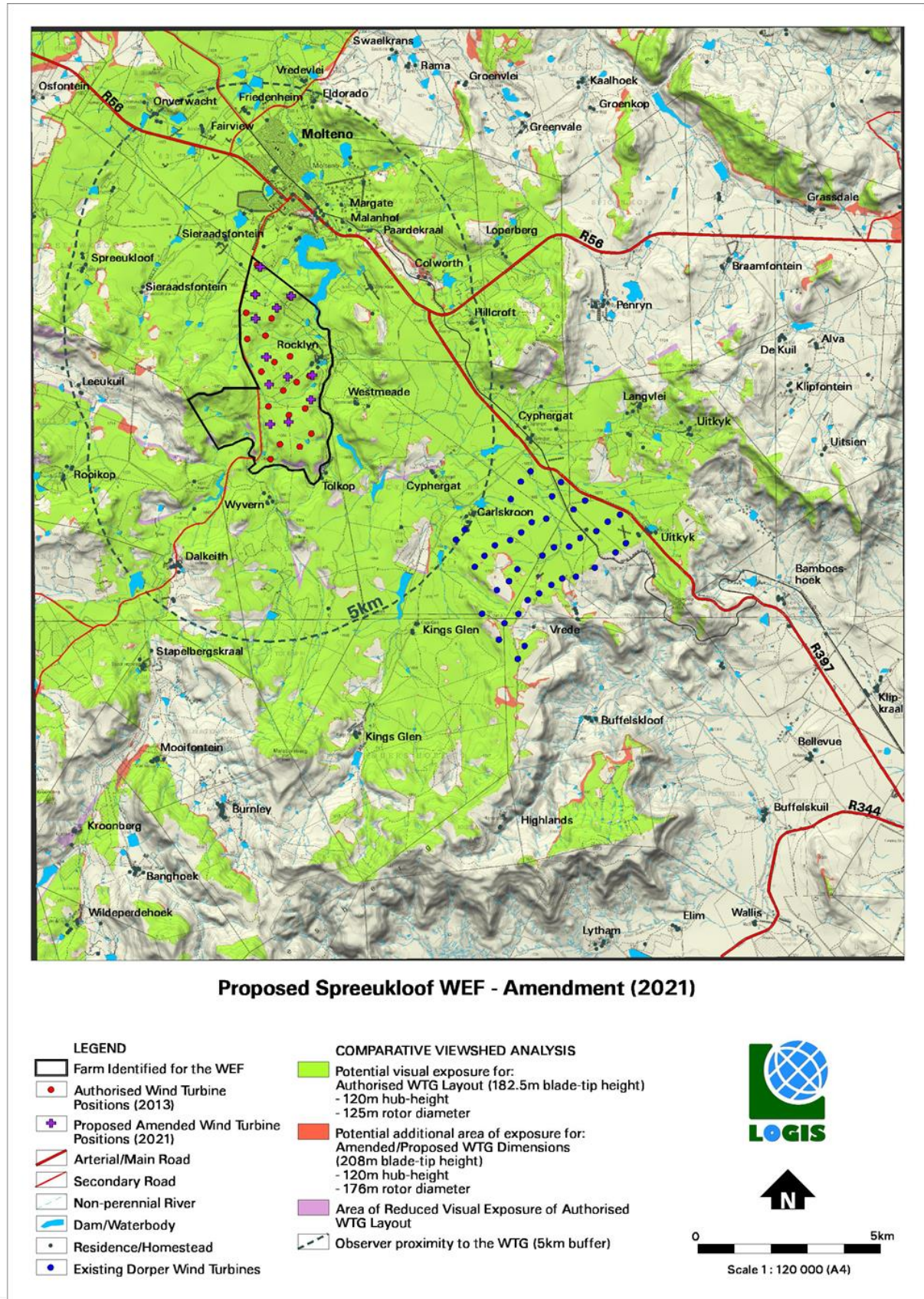


Figure 5.5: Comparative Views shed Analysis for Spreeukloof Wind Farm.

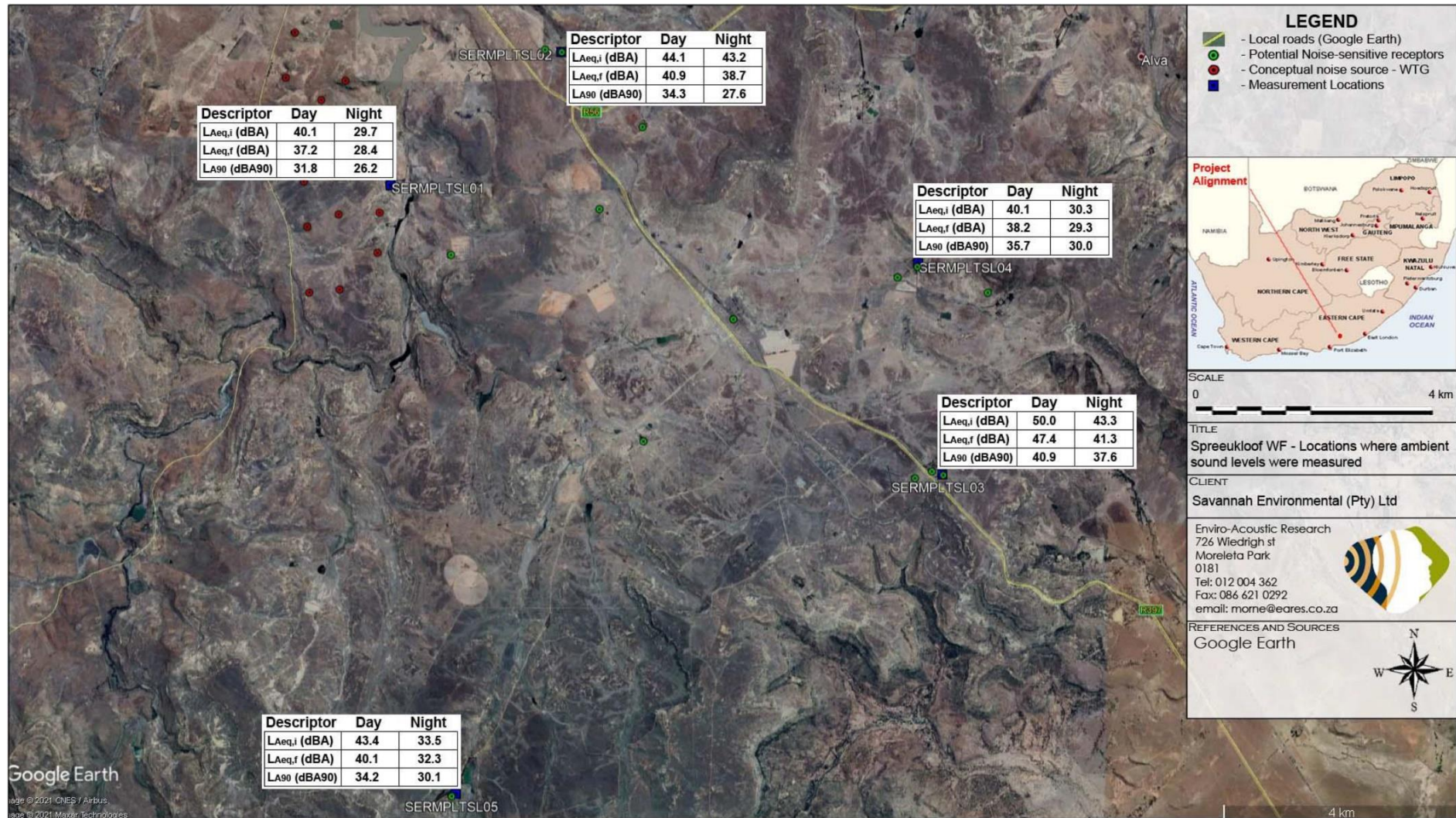


Figure 5.6: Localities where ambient sound and noise levels were measured

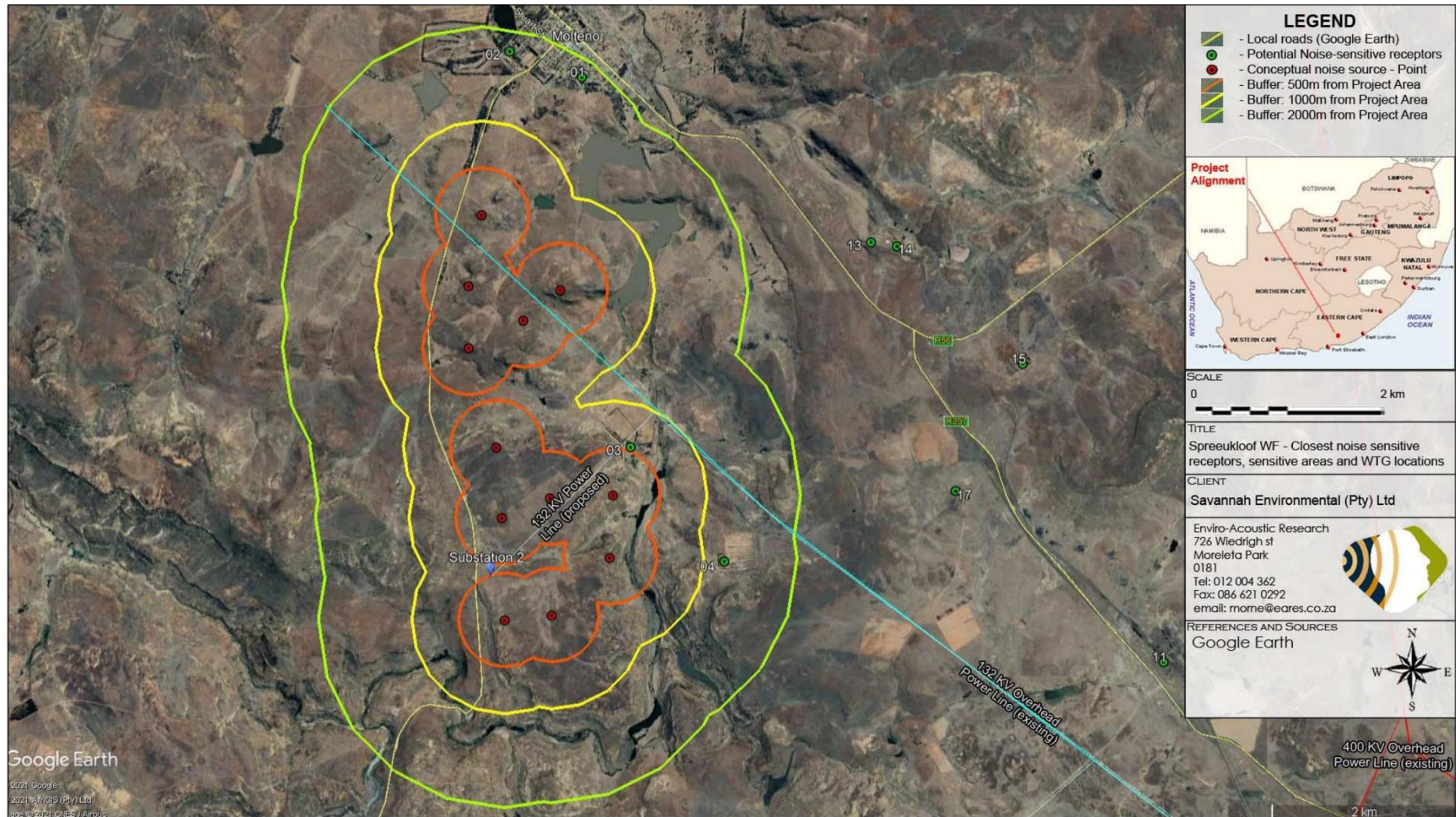


Figure 5.7: Aerial Image indicating site sensitivity and closest identified Noise-sensitive developments