

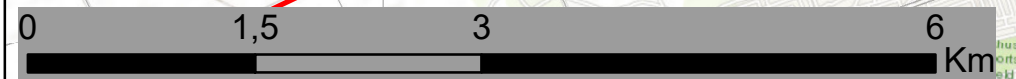
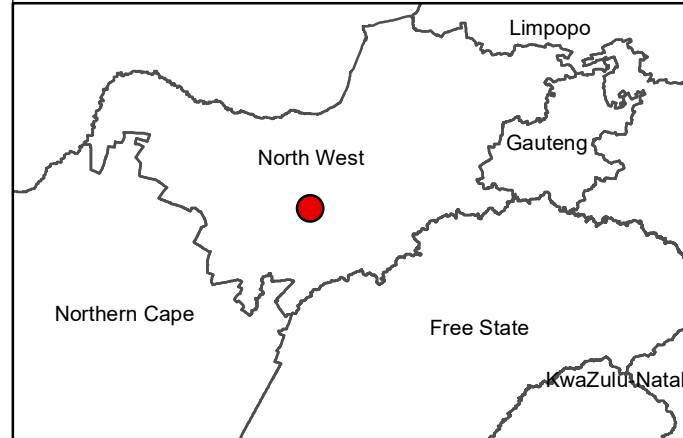
# Dicoma PV Facility and Associated Infrastructure, North West Province

## Locality Map

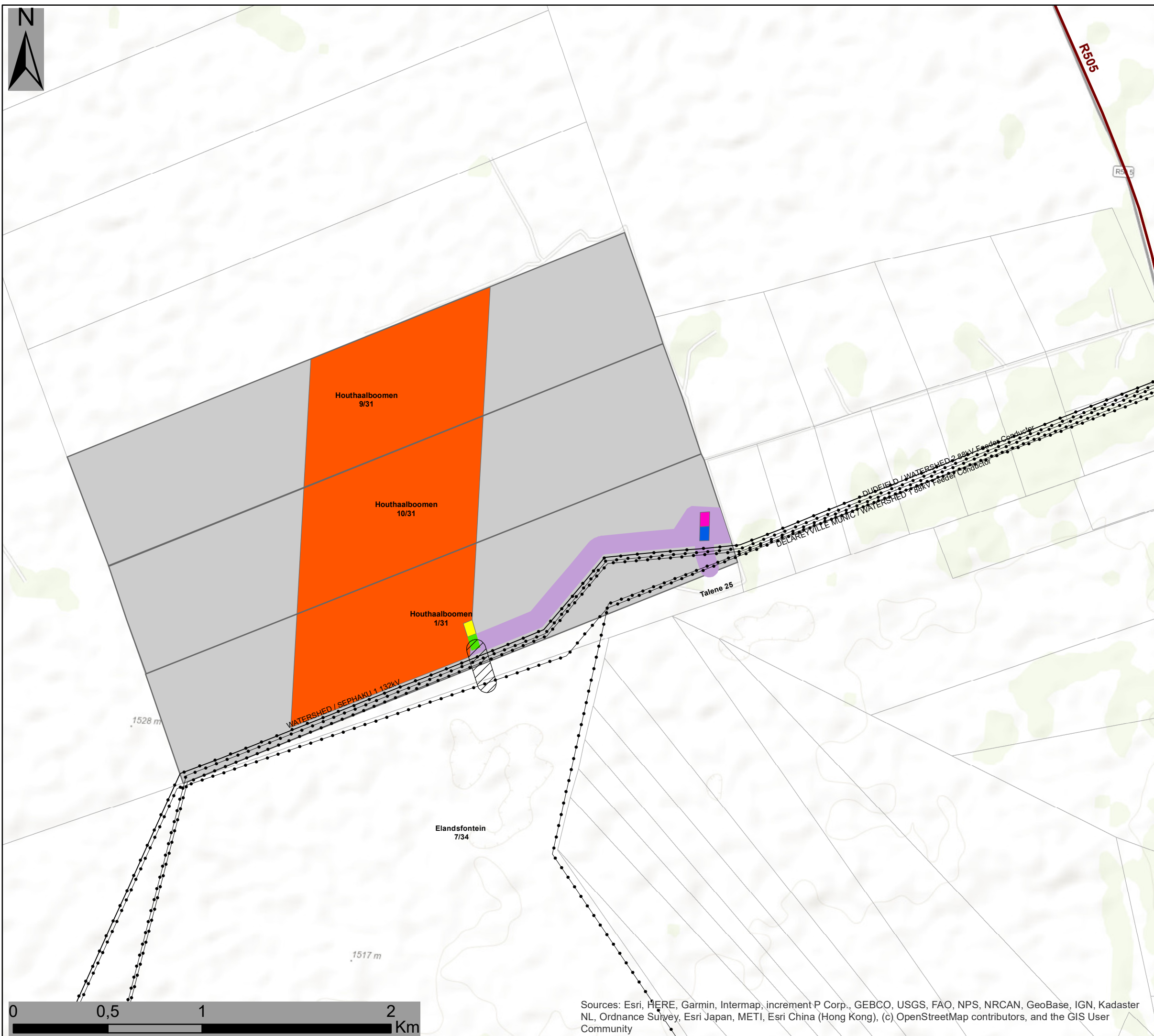
### Legend

- Town
- Eskom Substation
- Existing Power Lines
- Non-Perennial River
- Perennial River
- National Route
- Regional Road
- Main Road
- Farm Portions
- Affected Property
- Dicoma PV Development Area
- Grid Connection Corridor Alternative 2 (100m wide)
- Grid Connection Corridor Alternative 1 (100m wide)

Scale: 50 000  
 Projection: LO19  
 Map Ref: Dicoma Locality Map



Sources: Esri, HERE, Garmin, Intermap, increment P Corp., GEBCO, USGS, FAO, NPS, NRCAN, GeoBase, IGN, Kadaster NL, Ordnance Survey, Esri Japan, METI, Esri China (Hong Kong), (c) OpenStreetMap contributors, and the GIS User Community



# Dicoma PV Facility and Associated Infrastructure, North West Province

## Preliminary Layout Map

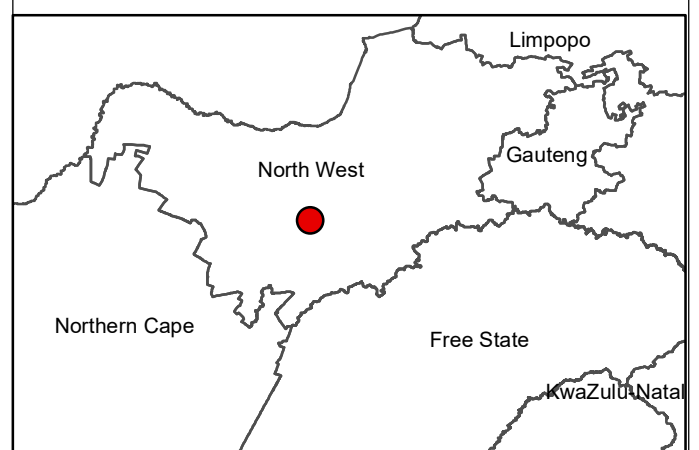
### Legend

- Town
- Eskom Substation
- Existing Power Lines
- ⋯ Non-Perennial River
- Perennial River
- National Route
- Regional Road
- Main Road
- Farm Portions
- Affected Property

### Preliminary Layout Plan:

- Dicoma PV Development Area
- Grid Connection Corridor Alternative 1:**
- Facility Substation
- Eskom Switching Station
- Grid Connection Corridor (100m wide)
- Grid Connection Corridor Alternative 2:**
- Facility Substation
- Eskom Switching Station
- Grid Connection Corridor (100m wide)

Scale: 50 000  
 Projection: LO19  
 Map Ref: Dicoma Layout Map



Sources: Esri, HERE, Garmin, Intermap, increment P Corp., GEBCO, USGS, FAO, NPS, NRCAN, GeoBase, IGN, Kadaster NL, Ordnance Survey, Esri Japan, METI, Esri China (Hong Kong), (c) OpenStreetMap contributors, and the GIS User Community



# Dicoma PV Facility and Associated Infrastructure, North West Province

## Preliminary Sensitivity Map

### Legend

- Existing Power Lines
- Regional Road
- Farm Portions
- Affected Property

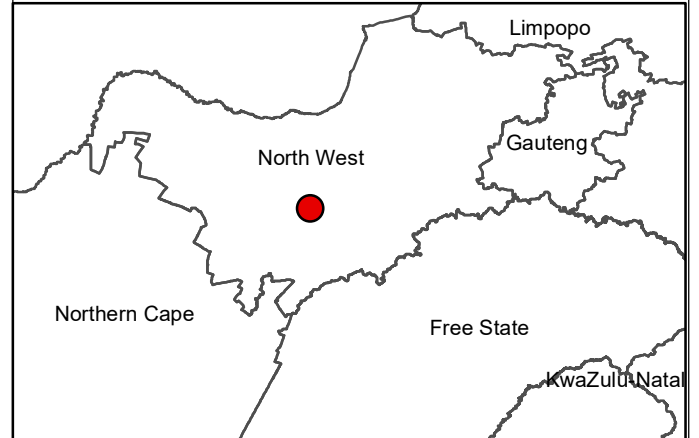
### Preliminary Layout Plan:

- Dicoma PV Development Area
- Grid Connection Corridor Alternative 1:**
  - Facility Substation
  - Eskom Switching Station
  - Grid Connection Corridor (100m wide)
- Grid Connection Corridor Alternative 2:**
  - Facility Substation
  - Eskom Switching Station
  - Grid Connection Corridor (100m wide)

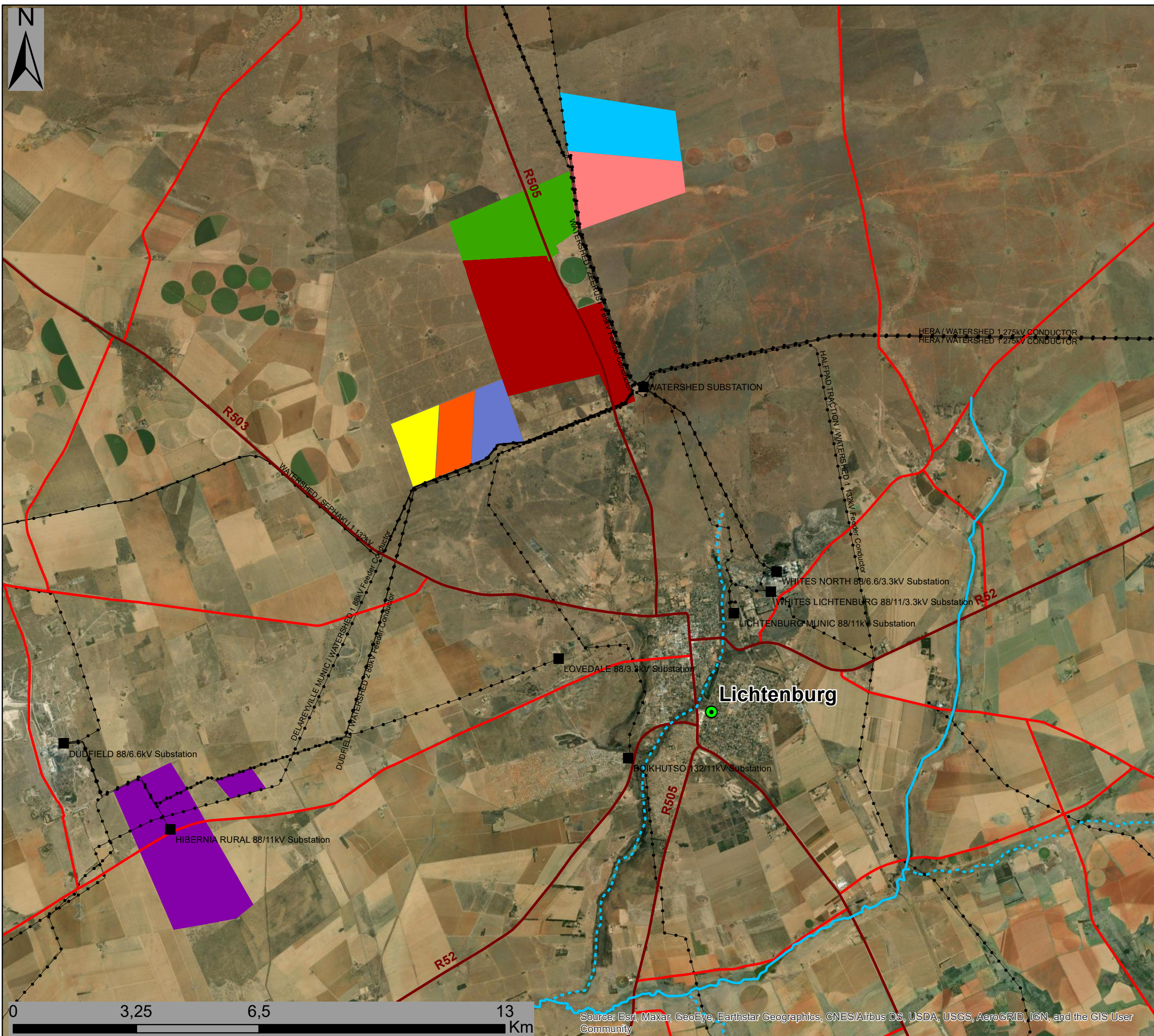
### Preliminary Environmental Sensitivities:

- Heritage Feature - Potential Burial Site (10m buffer)
- Avifauna (Medium)
- Ecological Sensitivity (Medium)
- Ecological Sensitivity (Medium-Low)

Scale: 50 000  
 Projection: LO19  
 Map Ref: Dicoma Prelim Sens Map



Sources: Esri, HERE, Garmin, Intermap, increment P Corp., GEBCO, USGS, FAO, NPS, NRCAN, GeoBase, IGN, Kadaster NL, Ordnance Survey, Esri Japan, METI, Esri China (Hong Kong), (c) OpenStreetMap contributors, and the GIS User Community



# Dicoma PV Facility and Associated Infrastructure, North West Province

Cumulative Map

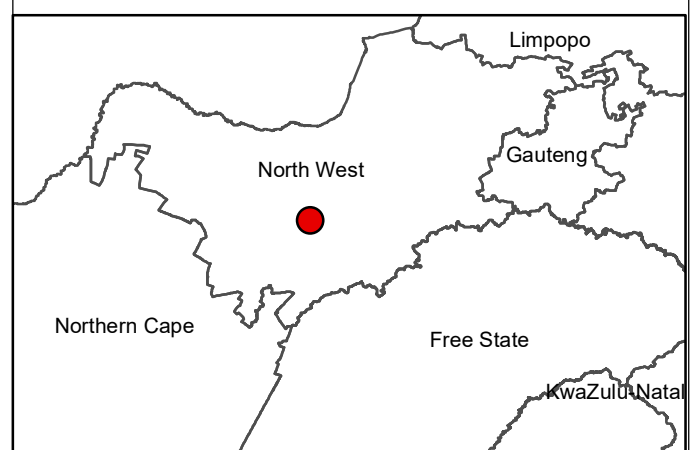
## Legend

- Town
- Eskom Substation
- Existing Power Lines
- Non-Perennial River
- Perennial River
- National Route
- Regional Road
- Main Road
- Dicoma PV Facility

## Other known solar PV facilities:

- Barleria PV Facility (in process)
- Setaria PV Facility (in process)
- Hibernia PV Facility (authorised)
- Tlitseng PV Cluster (authorised)
- Lichtenburg 1 PV Facility (authorised)
- Lichtenburg 2 PV Facility (authorised)
- Lichtenburg 3 PV Facility (authorised)

Scale: 50 000  
 Projection: LO19  
 Map Ref: Cumulative Map



Source: Esri, Maxar, GeoEye, Earthstar Geographics, CNES/Airbus DS, USDA, USGS, AeroGRID, IGN, and the GIS User Community