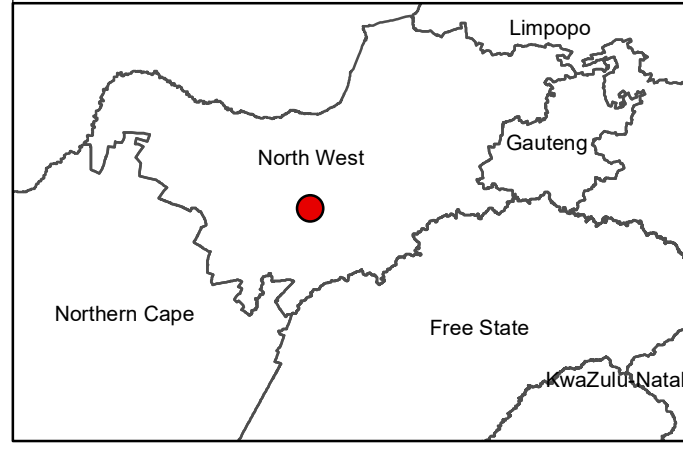


Setaria PV Facility and Associated Infrastructure, North West Province

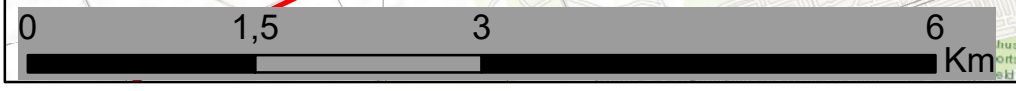
Locality Map

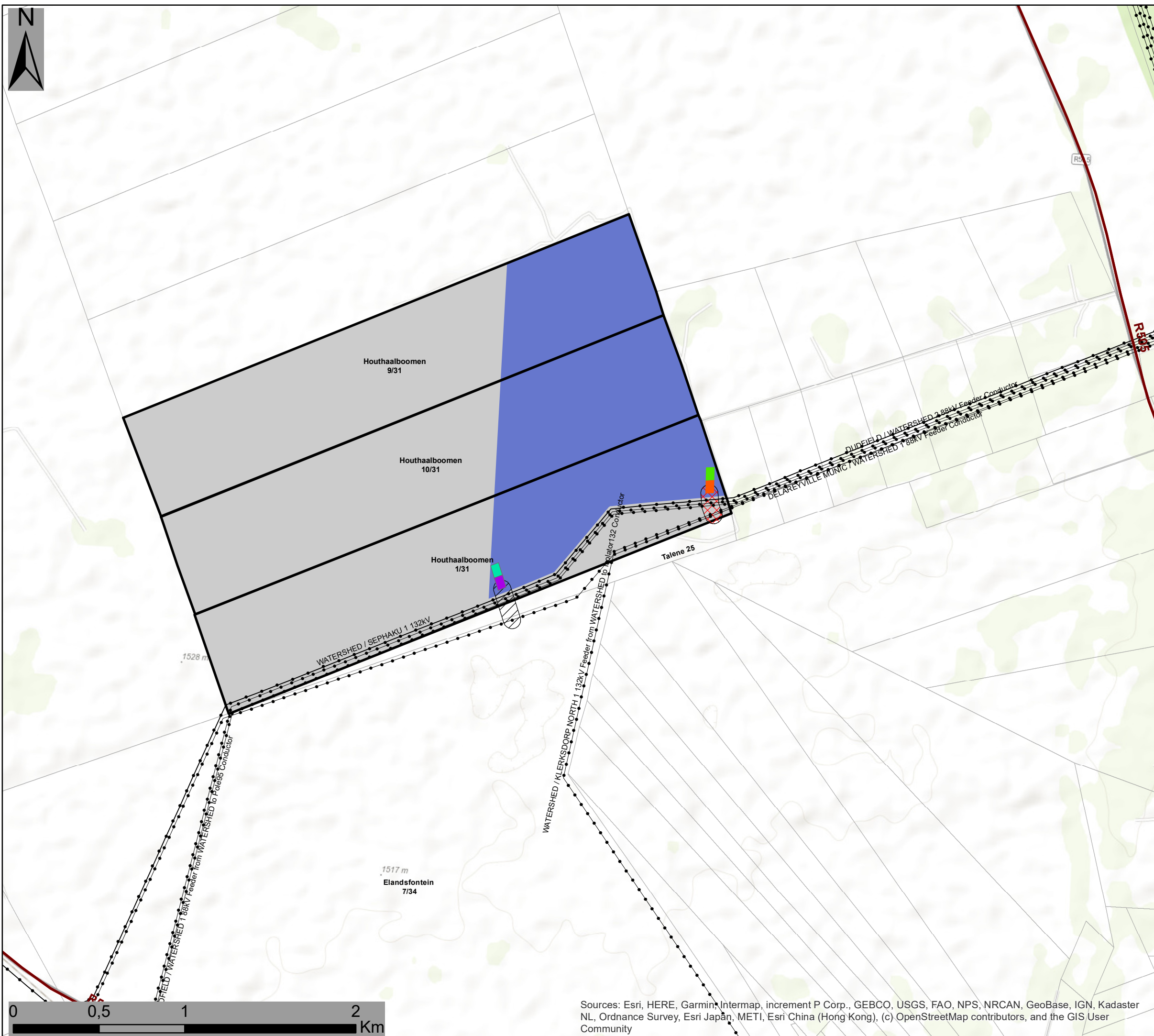
- Legend**
- Town
 - Eskom Substation
 - Existing Power Lines
 - Non-Perennial River
 - Perennial River
 - National Route
 - Regional Road
 - Main Road
 - Farm Portions
 - Affected Property
 - Grid Connection Corridor Alternative 1 (100m wide)
 - Grid Connection Corridor Alternative 2 (100m wide)
 - Setaria PV Development Area

Scale: 50 000
 Projection: LO19
 Map Ref: Setraria Locality Map



Sources: Esri, HERE, Garmin, Intermap, increment P Corp., GEBCO, USGS, FAO, NPS, NRCAN, GeoBase, IGN, Kadaster NL, Ordnance Survey, Esri Japan, METI, Esri China (Hong Kong), (c) OpenStreetMap contributors, and the GIS User Community





Setaria PV Facility and Associated Infrastructure, North West Province

Layout Map

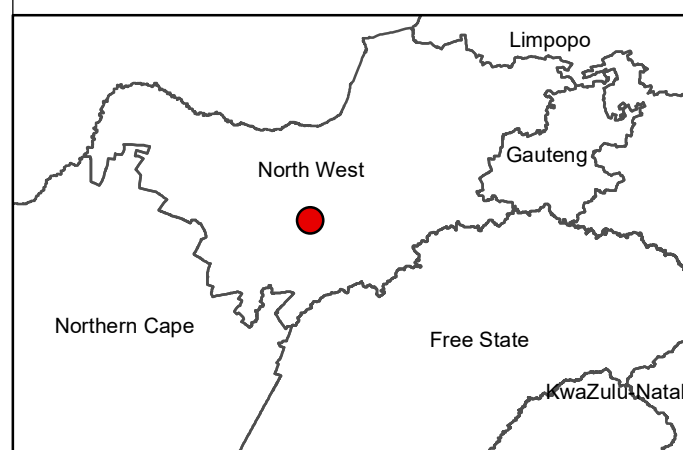
Legend

- Existing Power Lines
- Regional Road
- Farm Portions
- Affected Property

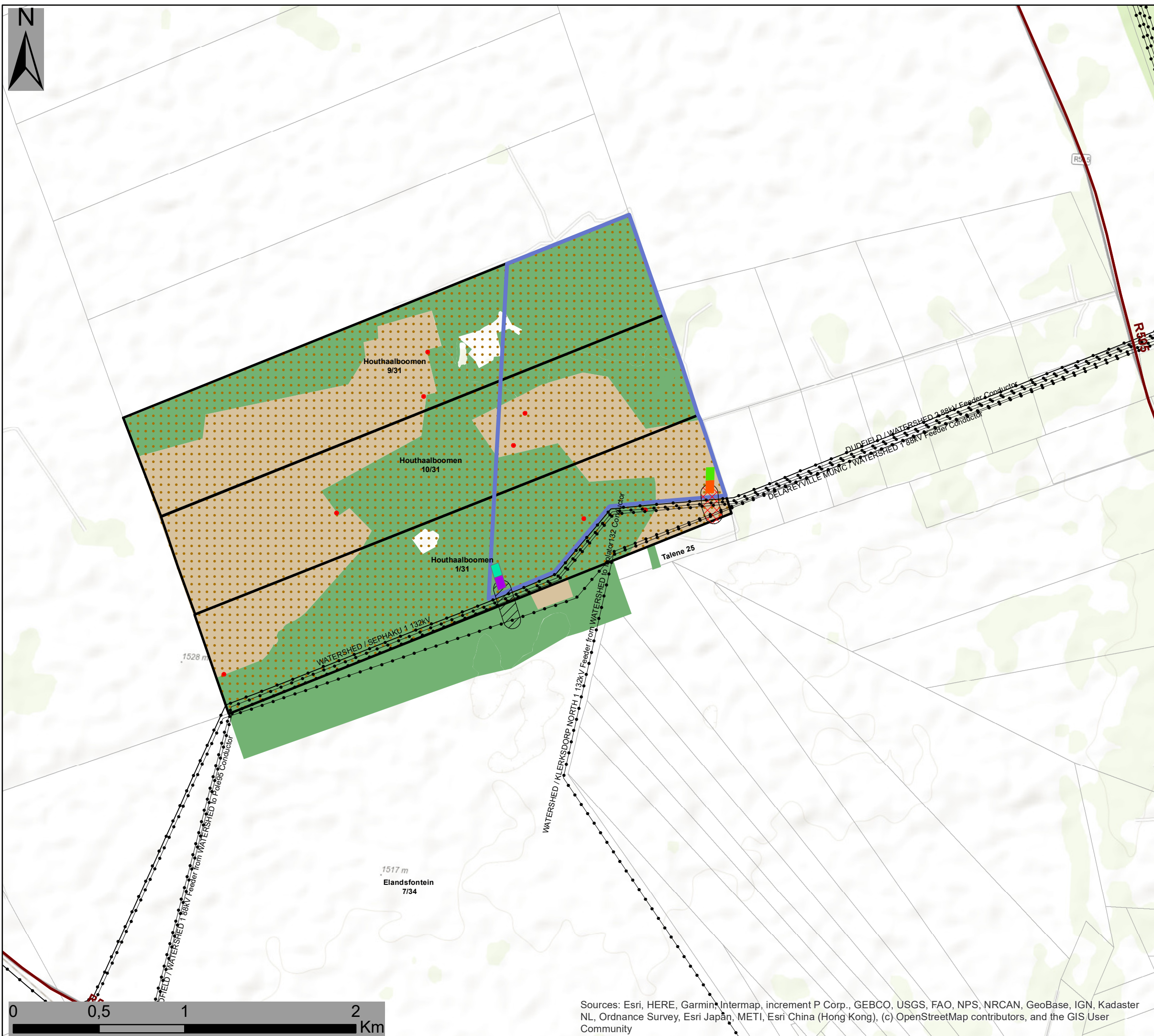
Preliminary Layout Plan:

- Setaria PV Development Area
- Grid Connection Corridor Alternative 1**
 - Facility Substation
 - Eskom Switching Station
 - Grid Connection Corridor (100m wide)
- Grid Connection Corridor Alternative 2**
 - Facility Substation
 - Eskom Switching Station
 - Grid Connection Corridor (100m wide)

Scale: 50 000
 Projection: LO19
 Map Ref: Setraria Layout Map



Sources: Esri, HERE, Garmin, Intermap, increment P Corp., GEBCO, USGS, FAO, NPS, NRCAN, GeoBase, IGN, Kadaster NL, Ordnance Survey, Esri Japan, METI, Esri China (Hong Kong), (c) OpenStreetMap contributors, and the GIS User Community



Setaria PV Facility and Associated Infrastructure, North West Province

Preliminary Sensitivity Map

Legend

- Existing Power Lines
- Regional Road
- Farm Portions

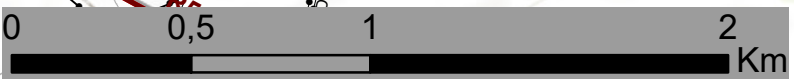
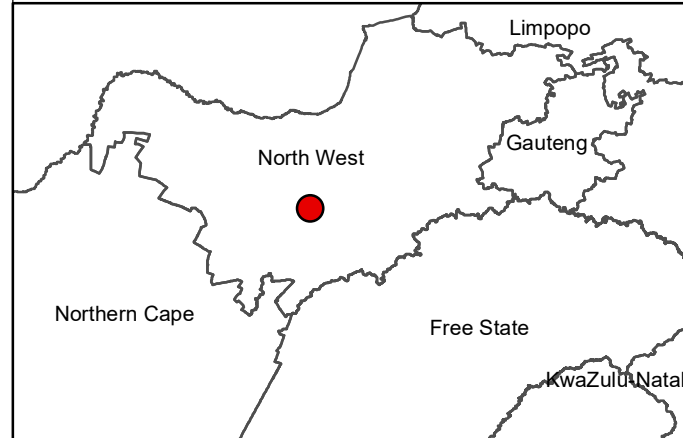
Preliminary Layout Plan:

- Setaria PV Development Area
- Grid Connection Corridor Alternative 1**
- Facility Substation
- Eskom Switching Station
- Grid Connection Corridor (100m wide)
- Grid Connection Corridor Alternative 2**
- Facility Substation
- Eskom Switching Station
- Grid Connection Corridor (100m wide)

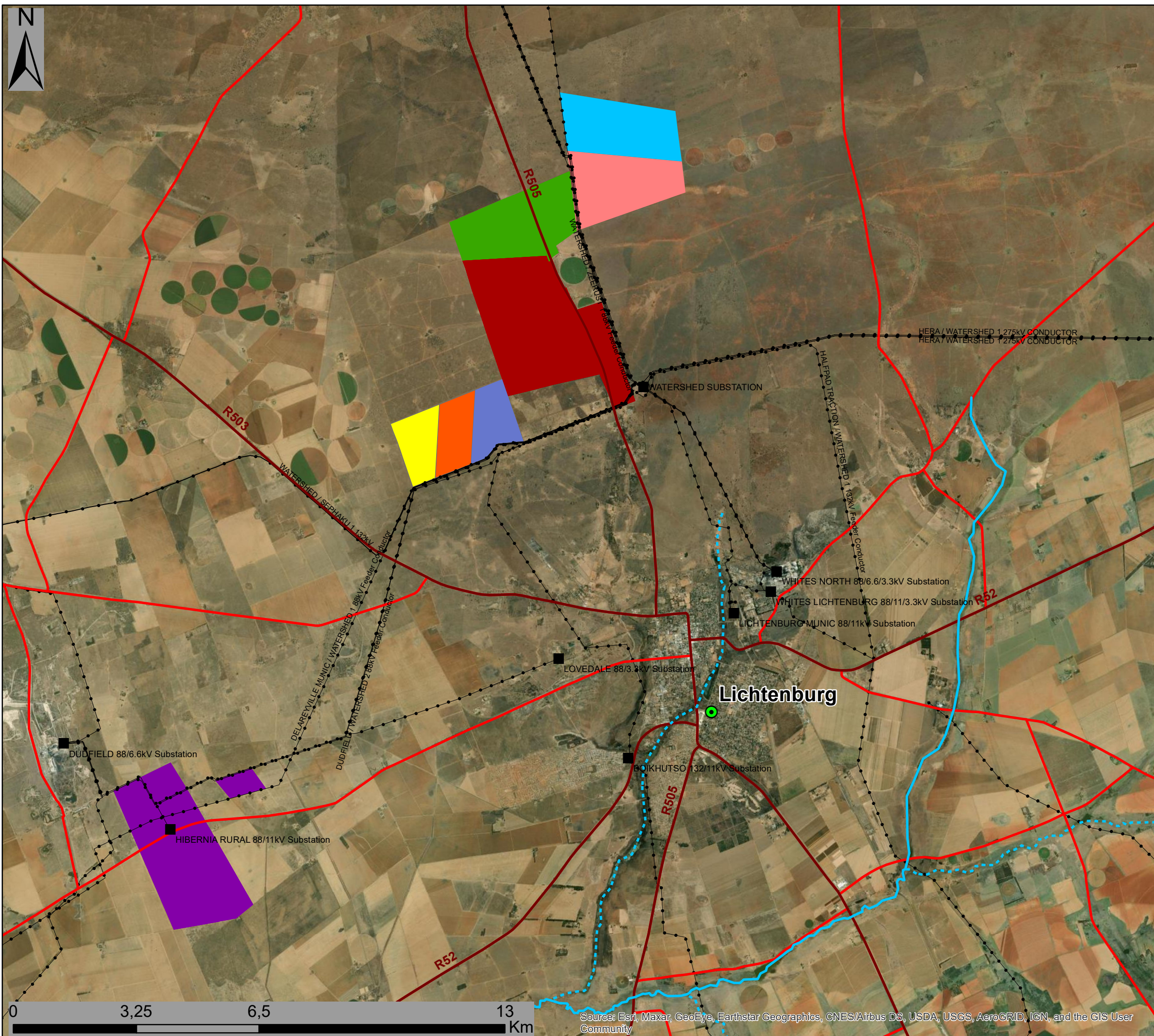
Preliminary Environmental Sensitivities

- Heritage Feature - Potential Burial Site (10m buffer)
- Avifauna (Medium)
- Ecological Sensitivity (Medium)
- Ecological Sensitivity (Medium-Low)

Scale: 50 000
 Projection: LO19
 Map Ref: Setraria Prelim Sens



Sources: Esri, HERE, Garmin, Intermap, increment P Corp., GEBCO, USGS, FAO, NPS, NRCAN, GeoBase, IGN, Kadaster NL, Ordnance Survey, Esri Japan, METI, Esri China (Hong Kong), (c) OpenStreetMap contributors, and the GIS User Community



SetariaPV Facility and Associated Infrastructure, North West Province

Cumulative Map

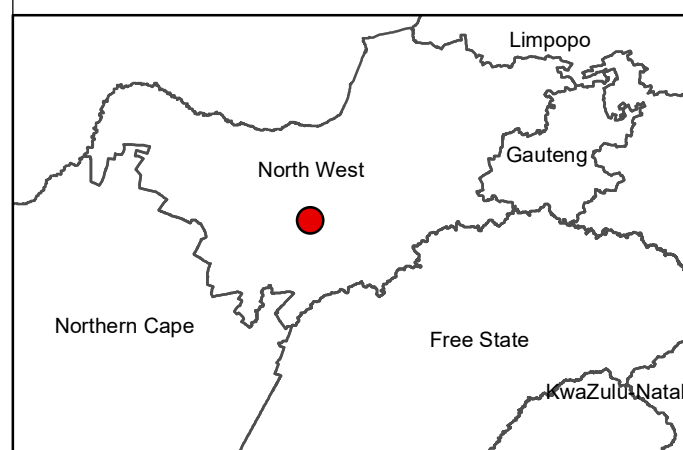
Legend

- Town
- Eskom Substation
- Existing Power Lines
- Non-Perennial River
- Perennial River
- National Route
- Regional Road
- Main Road
- Setaria PV Facility

Other known solar PV facilities:

- Dicoma PV Facility (in process)
- Barleria PV Facility (in process)
- Hibernia PV Facility (authorised)
- Tlitseng PV Cluster (authorised)
- Lichtenburg 1 PV Facility (authorised)
- Lichtenburg 2 PV Facility (authorised)
- Lichtenburg 3 PV Facility (authorised)

Scale: 50 000
 Projection: LO19
 Map Ref: Cumulative Map



Source: Esri, Maxar, GeoEye, Earthstar Geographics, CNES/Airbus DS, USDA, USGS, AeroGRID, IGN, and the GIS User Community