

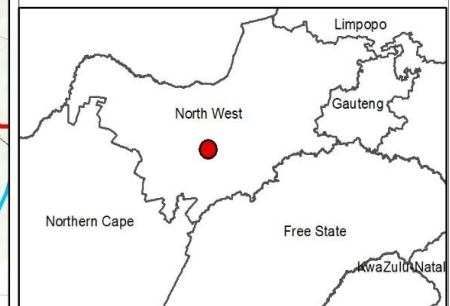
Barleria PV Facility and Associated Infrastructure, North West Province

Locality Map

Legend

- Town
- Eskom Substation
- Existing Power Lines
- Non-Perennial River
- Perennial River
- National Route
- Regional Road
- Main Road
- Farm Portions
- Affected Property
- Barleria PV Development Area
- Grid Connection Corridor Alternative 1 (100m wide)
- Grid Connection Corridor Alternative 2 (100m wide)

Scale: 50 000
 Projection: LO19
 Map Ref: Barleria Locality Map



Sources: Esri, HERE, Garmin, Intermap, increment P Corp., GEBCO, USGS, FAO, NPS, NRCAN, GeoBase, IGN, Kadaster NL, Ordnance Survey, Esri Japan, METI, Esri China (Hong Kong), (c) OpenStreetMap contributors, and the GIS User Community



Barleria PV Facility and Associated Infrastructure, North West Province

Layout Map

Legend

- Town
- Eskom Substation
- Regional Road
- Main Road
- Existing Power Lines
- Affected Property
- Farm Portions

Facility Layout:

- Internal Road
- Existing Access Road - Provincial Road D2435 (to be upgraded)
- BESS, Construction and O&M hub
- PV Array

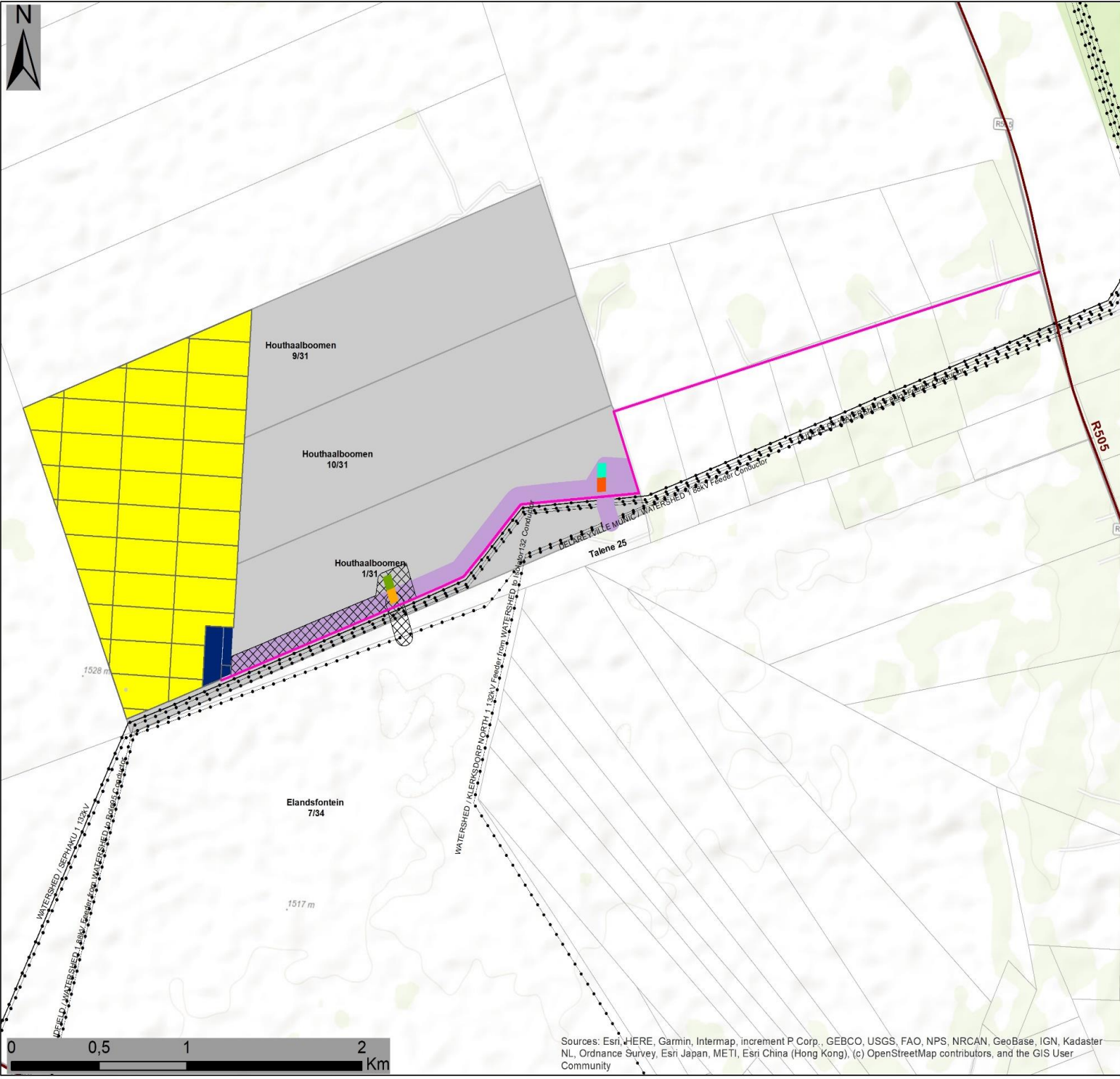
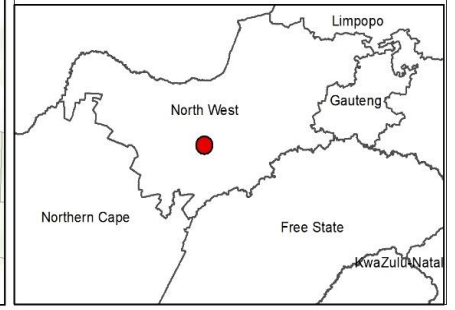
Grid Connection Corridor Alternative 1:

- Grid Connection Corridor (100m)
- Eskom Switching Station
- Facility Substation

Grid Connection Corridor Alternative 2:

- Grid Connection Corridor (100m)
- Eskom Switching Station
- Facility Substation

Scale: 20 000
 Projection: LO19
 Map Ref: Barleria Layout Map



Sources: Esri, HERE, Garmin, Intermap, increment P Corp., GEBCO, USGS, FAO, NPS, NRCAN, GeoBase, IGN, Kadaster NL, Ordnance Survey, Esri Japan, METI, Esri China (Hong Kong), (c) OpenStreetMap contributors, and the GIS User Community

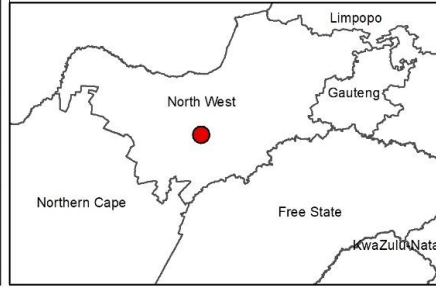


Barleria PV Facility and Associated Infrastructure, North West Province

Facility Layout & Sensitivity Map

- Legend**
- Regional Road
 - Existing Power Lines
 - Affected Property
 - Farm Portions
- Layout:**
- Internal Road
 - Existing Access Road - Provincial Road D2435 (to be upgraded)
 - BESS, Construction and O&M hub
 - PV Array
- Grid Connection Corridor Alternative 1:**
- Grid Connection Corridor (100m)
 - Eskom Switching Station
 - Facility Substation
- Grid Connection Corridor Alternative 2:**
- Grid Connection Corridor (100m)
 - Eskom Switching Station
 - Facility Substation
- Environmental Sensitivities:**
- Heritage Feature - Potential Burial Site (10m buffer)
 - Avifauna (Medium)
 - Ecological Sensitivity (Medium)
 - Ecological Sensitivity (Low Medium)

Scale: 20 000
 Projection: LO19
 Map Ref: Barleria Layout & Sens



Sources: Esri, HERE, Garmin, Intermap, increment P Corp., GEBCO, USGS, FAO, NPS, NRCAN, GeoBase, IGN, Kadaster NL, Ordnance Survey, Esri, Japan, METI, Esri China (Hong Kong), (c) OpenStreetMap contributors, and the GIS User Community



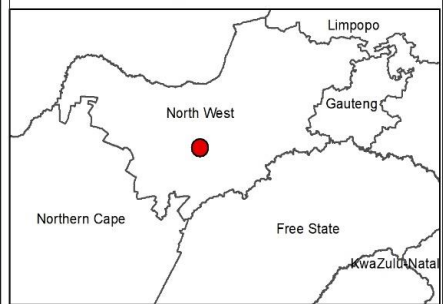
Barleria PV Facility and Associated Infrastructure, North West Province

Preferred Facility Layout & Sensitivity Map

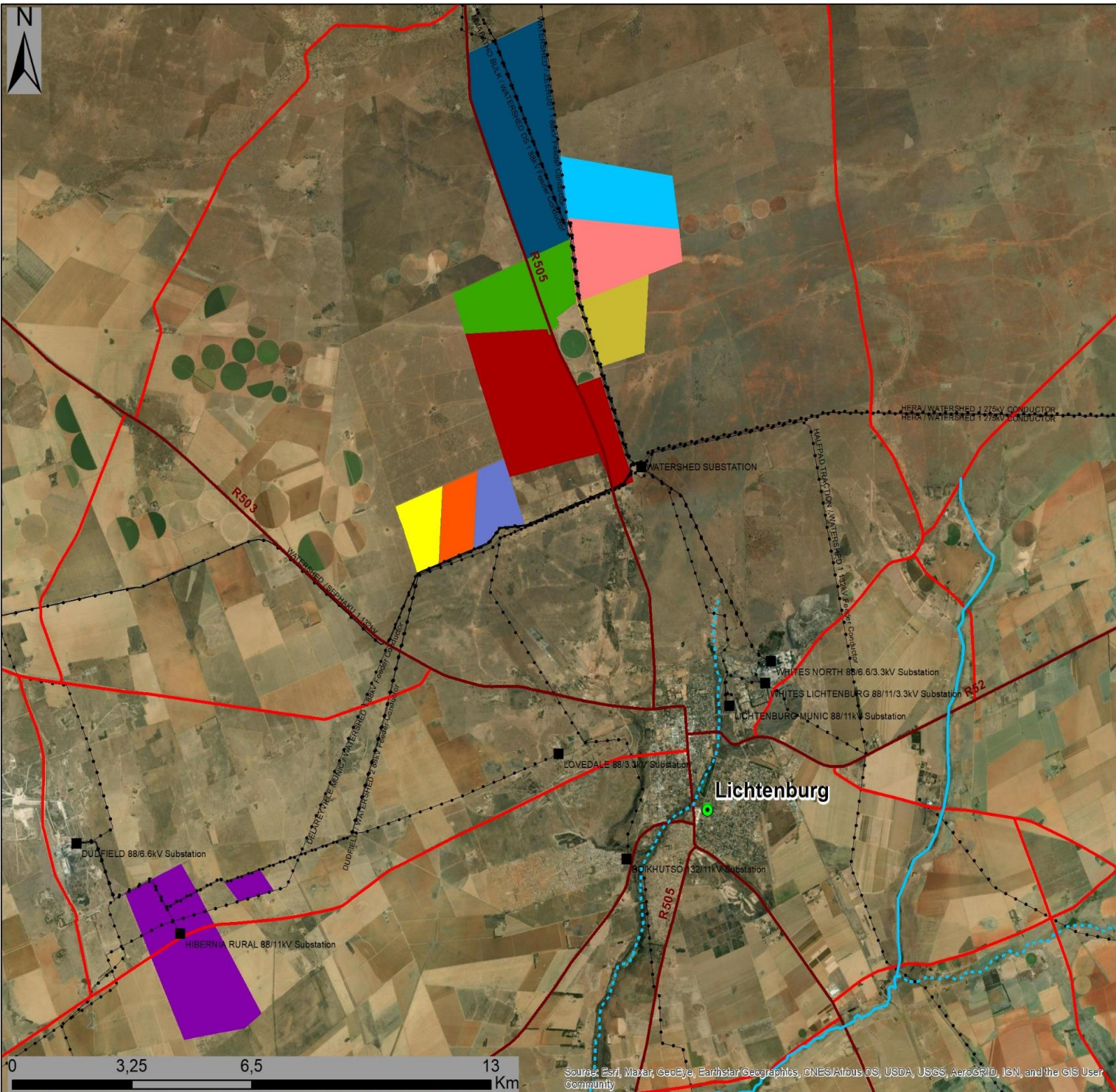
Legend

- Regional Road
 - Existing Power Lines
 - Affected Property
 - Farm Portions
- Layout:**
- Internal Road
 - Existing Access Road - Provincial Road D2435 (to be upgraded)
 - BESS, Construction and O&M hub
 - PV Array
- Grid Connection Corridor Alternative 1:**
- Grid Connection Corridor (100m)
 - Eskom Switching Station
 - Facility Substation
- Environmental Sensitivities:**
- Heritage Feature - Potential Burial Site (10m buffer)
 - Avifauna (Medium)
 - Ecological Sensitivity (Medium)
 - Ecological Sensitivity (Low Medium)

Scale: 20 000
 Projection: LO19
 Map Ref: Barleria Pref Layout & Sens



Sources: Esri, HERE, Garmin, Intermap, increment P Corp., GEBCO, USGS, FAO, NPS, NRCAN, GeoBase, IGN, Kadaster NL, Ordnance Survey, Esri Japan, METI, Esri China (Hong Kong), (c) OpenStreetMap contributors, and the GIS User Community



Barleria PV Facility and Associated Infrastructure, North West Province

Cumulative Map

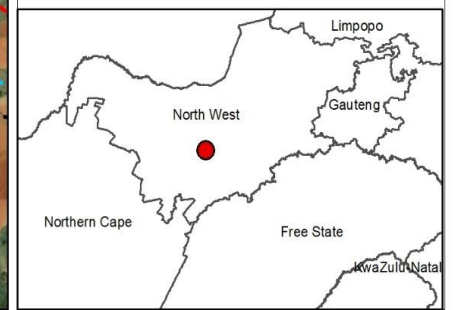
Legend

- Town
- Eskom Substation
- - - Existing Power Lines
- ⋯ Non-Perennial River
- Perennial River
- National Route
- Regional Road
- Main Road
- Barleria PV Facility

Other known solar PV facilities:

- Setaria PV Facility (in process)
- Dicoma PV Facility (in process)
- Hibernia PV Facility (authorised)
- Tiisitseng PV Cluster (authorised)
- Lichtenburg 3 PV Facility (authorised)
- Lichtenburg 2 PV Facility (authorised)
- Lichtenburg 1 PV Facility (authorised)
- Lichtenburg Solar Park (authorised)
- Subsolar PV Cluster (in process)

Scale: 50 000
 Projection: LO19
 Map Ref: Barleria Locality Map



Sources: Esri, Maxar, GeoEye, Earthstar/Geographics, CNES/Airbus DS, USDA, USGS, AeroGRID, IGN, and the GIS User Community

Barleria PV Facility, North West Province – Coordinates

Site (development area)	Coordinates	Latitude:	Longitude:
	Northern point	26° 5'58.28"S	26° 5'6.50"E
	Eastern point	26° 6'27.74"S	26° 5'28.32"E
	Southern point	26° 6'56.48"S	26° 5'19.36"E
	Western point	26° 6'36.63"S	26° 4'56.50"E
	Centre point	26° 6'25.20"S;	26° 5'10.14"E

Coordinates of Grid Connection Alternatives	Grid Corridor	Grid Connection Corridor Alternative 1	Grid Connection Corridor Alternative 2
		Start: 26° 6'51.22"S 26° 5'28.66"E	Start: 26° 6'51.12"S 26° 5'28.61"E
		Middle: 26° 6'31.07"S 26° 6'13.55"E	Middle: 26° 6'43.87"S 26° 5'46.82"E
		End: 26° 6'14.28"S 26° 6'47.93"E	End: 26° 6'35.36"S 26° 6'3.73"E

Centre Coordinates BESS, Construction and O&M hub	26° 6'36.63"S	26° 4'56.50"E
---	---------------	---------------