

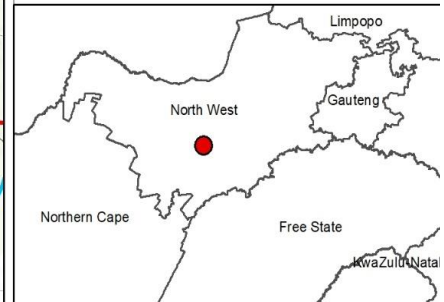
Dicoma PV Facility and Associated Infrastructure, North West Province

Locality Map

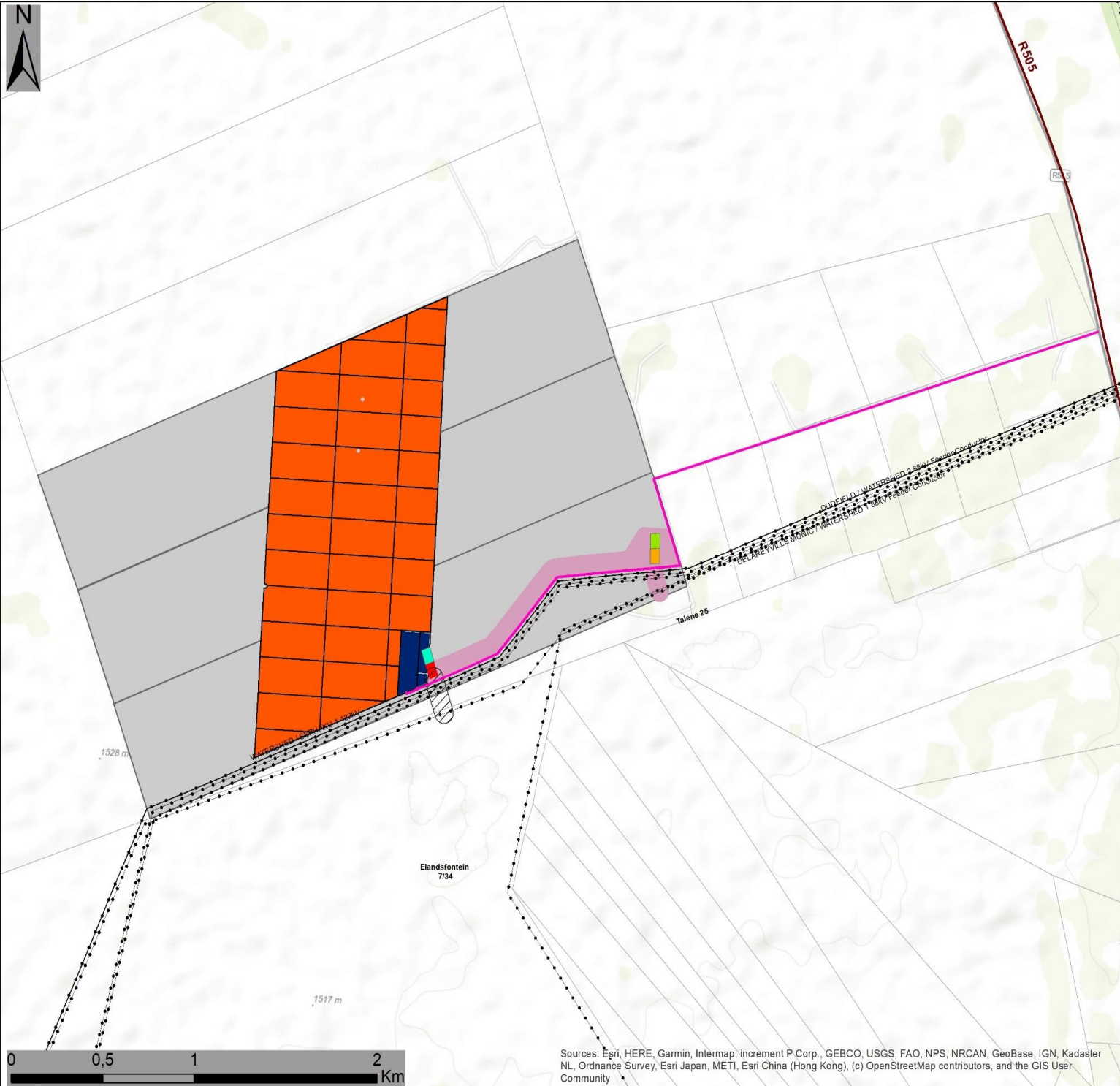
Legend

- Town
- Eskom Substation
- Existing Power Lines
- Non-Perennial River
- Perennial River
- National Route
- Regional Road
- Main Road
- Farm Portions
- Affected Property
- Dicoma PV Development Area
- Grid Connection Corridor Alternative 1 (100m wide)
- Grid Connection Corridor Alternative 2 (100m wide)

Scale: 50 000
 Projection: LO19
 Map Ref: Dicoma Locality Map



Sources: Esri, HERE, Garmin, Intermap, increment P Corp., GEBCO, USGS, FAO, NPS, NRCAN, GeoBase, IGN, Kadaster NL, Ordnance Survey, Esri Japan, METI, Esri China (Hong Kong), (c) OpenStreetMap contributors, and the GIS User Community



Dicoma PV Facility and Associated Infrastructure, North West Province

Layout Map

Legend

- Existing Power Lines
 - Regional Road
 - Farm Portions
 - Affected Property
- Facility Layout:**
- Existing Access Road - Provincial Road D2435 (to be upgraded)
 - Internal Road
 - BESS, Construction and O&M hub
 - PV Array
- Grid Connection Corridor Alternative 1:**
- Facility Substation
 - Eskom Switching Station
 - Grid Connection Corridor (100m wide)
- Grid Connection Corridor Alternative 2:**
- Facility Substation
 - Eskom Switching Station
 - ▨ Grid Connection Corridor (100m wide)

Scale: 50 000
 Projection: LO19
 Map Ref: Dicoma Layout Map



Sources: Esri, HERE, Garmin, Intermap, increment P Corp., GEBCO, USGS, FAO, NPS, NRCAN, GeoBase, IGN, Kadaster NL, Ordnance Survey, Esri Japan, METI, Esri China (Hong Kong), (c) OpenStreetMap contributors, and the GIS User Community



Dicoma PV Facility and Associated Infrastructure, North West Province

Facility Layout & Sensitivity Map

Legend

- Existing Power Lines
- Regional Road
- Farm Portions
- Affected Property

Facility Layout:

- Existing Access Road - Provincial Road D2435 (to be upgraded)
- Internal Road
- BESS, Construction and O&M hub
- PV Array

Grid Connection Corridor Alternative 1:

- Facility Substation
- Eskom Switching Station
- Grid Connection Corridor (100m wide)

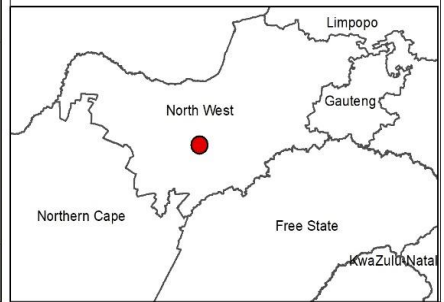
Grid Connection Corridor Alternative 2:

- Facility Substation
- Eskom Switching Station
- Grid Connection Corridor (100m wide)

Environmental Sensitivities:

- Heritage Feature - Potential Burial Site (10m buffer)
- Avifauna (Medium)
- Ecological Sensitivity (Medium)
- Ecological Sensitivity (Low Medium)

Scale: 50 000
 Projection: LO19
 Map Ref: Dicoma Layout & Sens Map



Sources: Esri, HERE, Garmin, Intermap, increment P Corp., GEBCO, USGS, FAO, NPS, NRCAN, GeoBase, IGN, Kadaster NL, Ordnance Survey, Esri Japan, METI, Esri China (Hong Kong), (c) OpenStreetMap contributors, and the GIS User Community



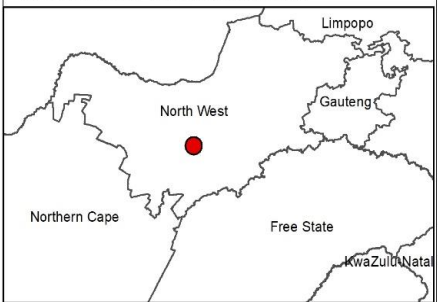
Dicoma PV Facility and Associated Infrastructure, North West Province

Preferred Facility Layout & Sensitivity Map

Legend

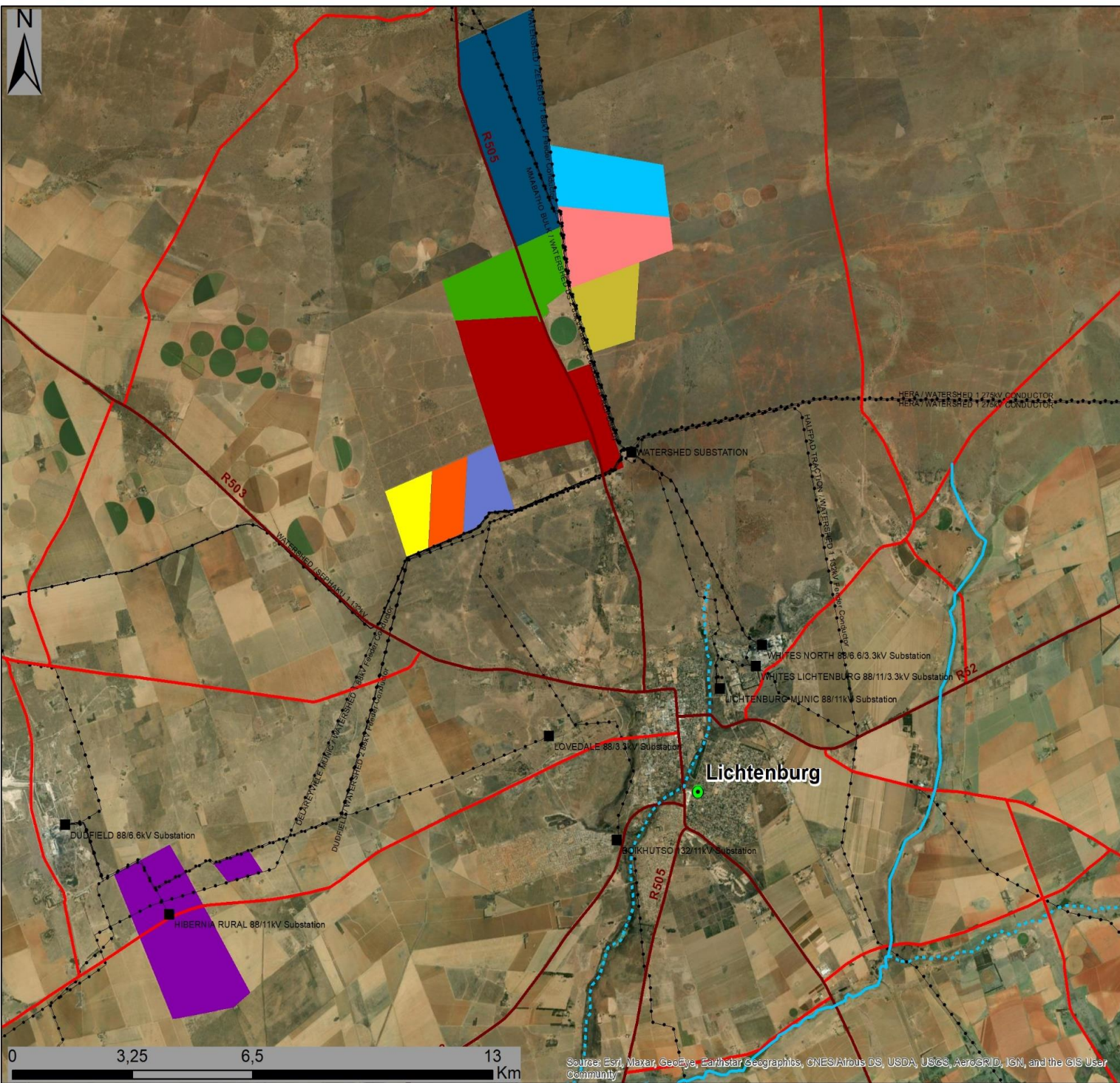
- Existing Power Lines
 - Regional Road
 - Farm Portions
 - Affected Property
- Facility Layout:**
- Existing Access Road - Provincial Road D2435 (to be upgraded)
 - Internal Road
 - BESS, Construction and O&M hub
 - PV Array
- Grid Connection Corridor Alternative 1:**
- Facility Substation
 - Eskom Switching Station
 - Grid Connection Corridor (100m wide)
- Environmental Sensitivities:**
- Heritage Feature - Potential Burial Site (10m buffer)
 - Avifauna (Medium)
 - Ecological Sensitivity (Medium)
 - Ecological Sensitivity (Low Medium)

Scale: 50 000
 Projection: LQ19
 Map Ref: Dicoma Pref Layout & Sens Map



Sources: Esri, HERE, Garmin, Intermap, increment P Corp., GEBCO, USGS, FAO, NPS, NRCAN, GeoBase, IGN, Kadaster NL, Ordnance Survey, Esri Japan, METI, Esri China (Hong Kong), (c) OpenStreetMap contributors, and the GIS User Community





Dicoma PV Facility and Associated Infrastructure, North West Province

Cumulative Map

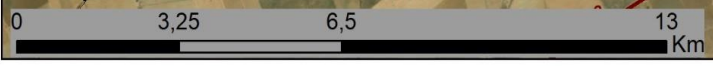
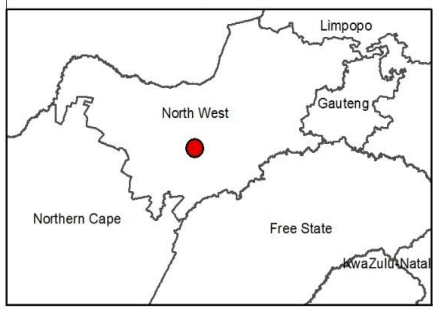
Legend

- Town
- Eskom Substation
- Existing Power Lines
- Non-Perennial River
- Perennial River
- National Route
- Regional Road
- Main Road
- Dicoma PV Facility

Other known solar PV facilities:

- Barleria PV Facility (in process)
- Setaria PV Facility (in process)
- Hibernia PV Facility (authorised)
- Tlisitseng PV Cluster (authorised)
- Lichtenburg 3 PV Facility (authorised)
- Lichtenburg 2 PV Facility (authorised)
- Lichtenburg 1 PV Facility (authorised)
- Lichtenburg Solar Park (authorised)
- Subsolar PV Cluster (in process)

Scale: 50 000
 Projection: LO19
 Map Ref: Cumulative Map



Source: Esri, Maxar, GeoEye, Earthstar Geographics, CNES/Airbus DS, USDA, USGS, AeroGRID, IGN, and the GIS User Community

Dicoma PV Facility, North West Province – Coordinates

Site	Coordinates	Latitude:	Longitude:
(development area)	Northern point	26° 5'43.47"S	26° 5'45.44"E
	Eastern point	26° 6'6.93"S	26° 6'1.63"E
	Southern point	26° 6'45.37"S	26° 5'48.14"E
	Western point	26° 6'15.94"S	26° 5'28.30"E
	Centre point	26° 6'14.61"S	26° 5'46.69"E

Coordinates of Grid Connection Alternatives	Grid Corridor	Grid Connection Corridor Alternative 1	Grid Connection Corridor Alternative 2
		Start: 26° 6'37.76"S 26° 6'1.92"E	Start: 26° 6'45.28"S 26° 6'5.33"E
		Middle: 26° 6'22.18"S 26° 6'22.73"E	Middle: 26° 6'41.76"S 26° 6'3.98"E
		End: 26° 6'13.90"S 26° 6'47.71"E	End: 26° 6'37.44"S 26° 6'1.98"E

Centre Coordinates BESS, Construction and O&M hub	26° 6'36.63"S	26° 5'56.87"E
---	---------------	---------------