

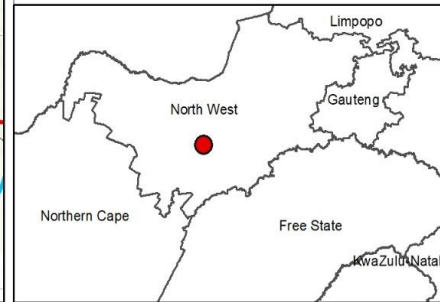
Setaria PV Facility and Associated Infrastructure, North West Province

Locality Map

Legend

- Town
- Eskom Substation
- Existing Power Lines
- Non-Perennial River
- Perennial River
- Regional Road
- Main Road
- Farm Portions
- Affected Property
- Grid Connection Corridor Alternative 1 (100m wide)
- Grid Connection Corridor Alternative 2 (100m wide)
- Setaria PV Development Area

Scale: 50 000
 Projection: LO19
 Map Ref: Setraria Locality Map



Sources: Esri, HERE, Garmin, Intermap, increment P Corp., GEBCO, USGS, FAO, NPS, NRCAN, GeoBase, IGN, Kadaster NL, Ordnance Survey, Esri Japan, METI, Esri China (Hong Kong), (c) OpenStreetMap contributors, and the GIS User Community

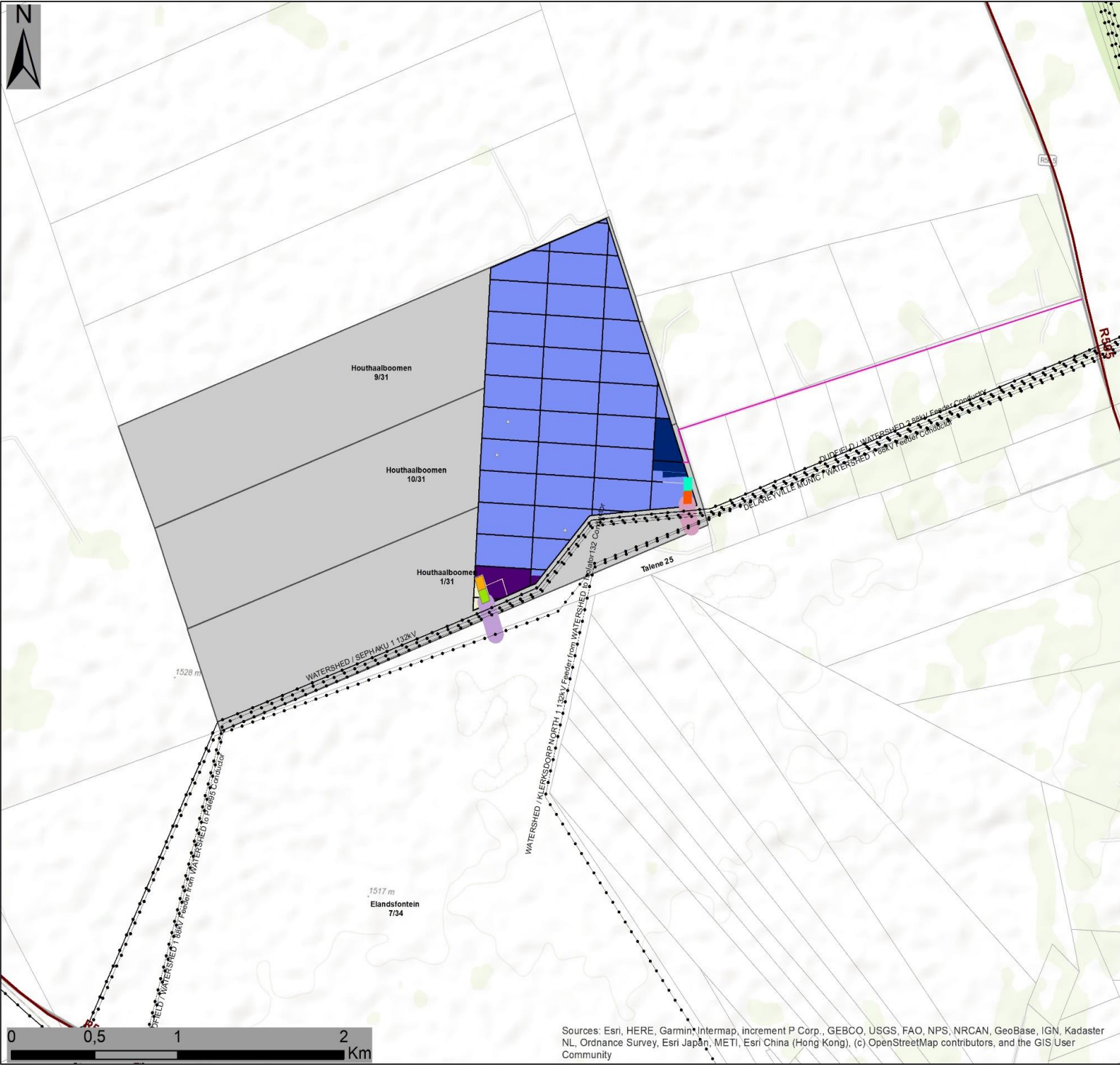


Setaria PV Facility and Associated Infrastructure, North West Province

Facility Layout Map

Legend

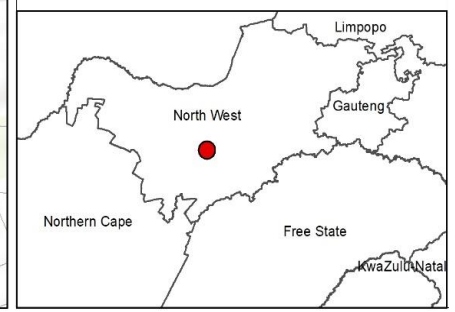
- • • • Existing Power Lines
 - Regional Road
 - Farm Portions
 - Affected Property
- Facility Layout:**
- Existing Access Road - Provincial Road D2435 (to be upgraded)
 - Internal Road
 - PV Array
 - BESS, construction and O&M hub - Alternative
- Grid Connection Corridor Alternative 1**
- Facility Substation
 - Eskom Switching Station
 - Grid Connection Corridor (100m wide)
 - BESS, construction and O&M hub - Alternative
- Grid Connection Corridor Alternative 2**
- Facility Substation
 - Eskom Switching Station
 - Grid Connection Corridor (100m wide)



Scale: 50 000
 Projection: LO19
 Map Ref: Setaria Layout Map



Sources: Esri, HERE, Garmin, Intermap, increment P Corp., GEBCO, USGS, FAO, NPS, NRCAN, GeoBase, IGN, Kadaster NL, Ordnance Survey, Esri Japan, METI, Esri China (Hong Kong), (c) OpenStreetMap contributors, and the GIS User Community





Setaria PV Facility and Associated Infrastructure, North West Province

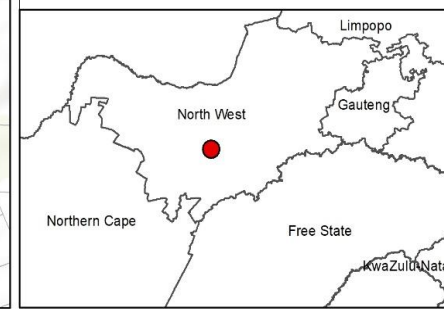
Facility Layout & Sensitivity Map

Legend

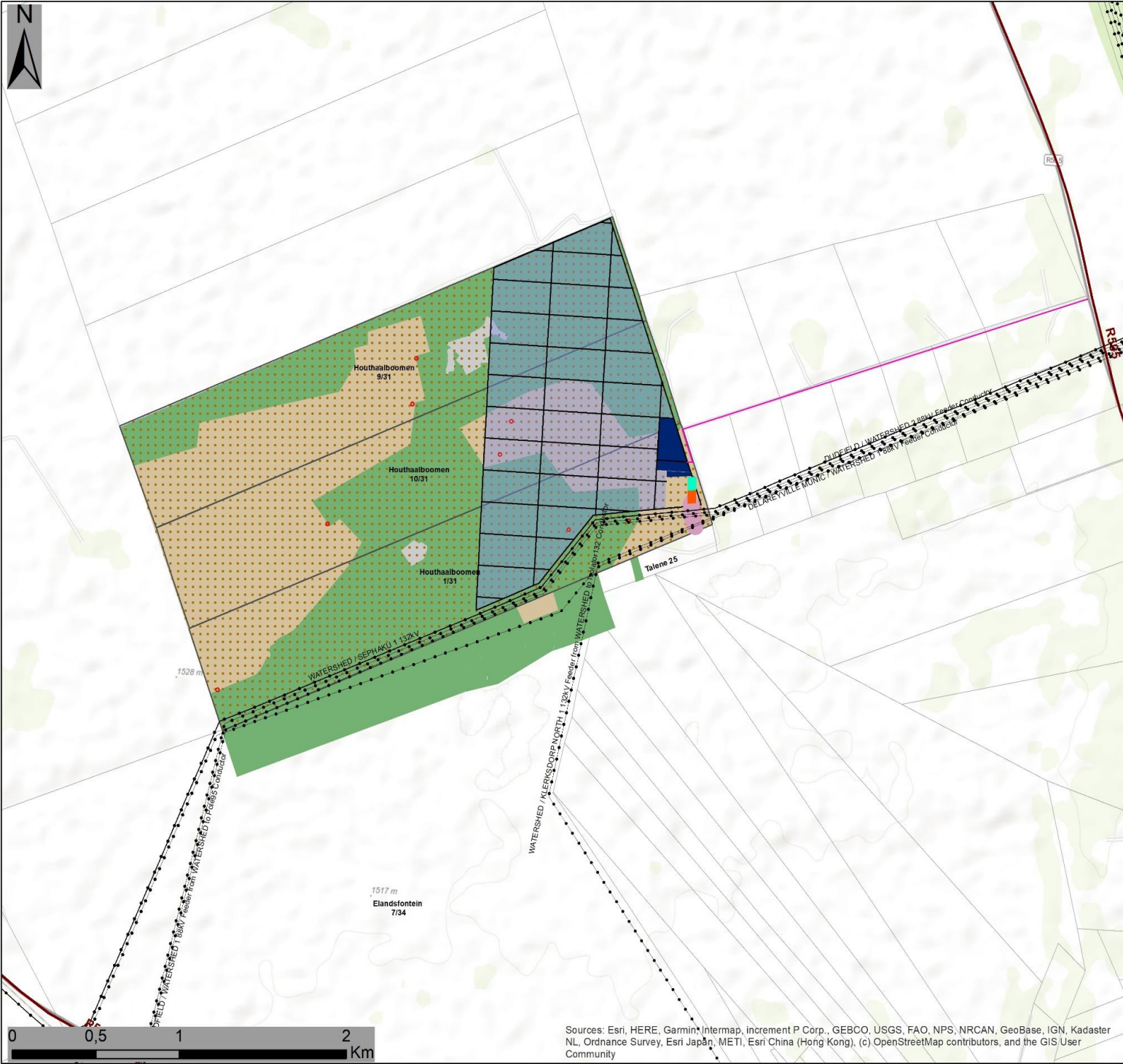
- Existing Power Lines
- Regional Road
- Farm Portions
- Facility Layout:**
- Existing Access Road - Provincial Road D2435 (to be upgraded)
- Internal Road
- PV Array
- BESS, construction and O&M hub - Alternative
- Grid Connection Corridor Alternative 1**
- Facility Substation
- Eskom Switching Station
- Grid Connection Corridor (100m wide)
- BESS, construction and O&M hub - Alternative
- Grid Connection Corridor Alternative 2**
- Facility Substation
- Eskom Switching Station
- Grid Connection Corridor (100m wide)
- Environmental Sensitivities**
- Heritage Feature - Potential Burial Site (10m buffer)
- Avifauna (Medium)
- Ecological Sensitivity (Medium)
- Ecological Sensitivity (Low Medium)



Scale: 20 000
 Projection: LO19
 Map Ref: Setaria Layout Map



Sources: Esri, HERE, Garmin, Intermap, increment P Corp., GEBCO, USGS, FAO, NPS, NRCAN, GeoBase, IGN, Kadaster NL, Ordnance Survey, Esri Japan, METI, Esri China (Hong Kong), (c) OpenStreetMap contributors, and the GIS User Community



Setaria PV Facility and Associated Infrastructure, North West Province

Preferred Facility Layout & Sensitivity Map

Legend

- Existing Power Lines
- Regional Road
- Farm Portions
- Existing Access Road - Provincial Road D2435 (to be upgraded)
- Internal Road
- PV
- BESS, construction and O&M hub - Alternative 1

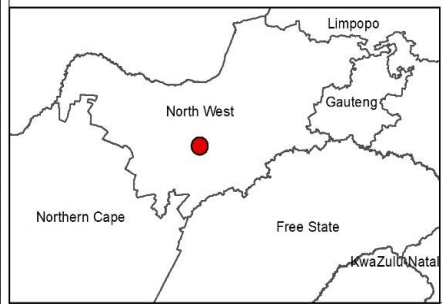
Facility Layout:

- Facility Substation
- Eskom Switching Station
- Grid Connection Corridor (100m)

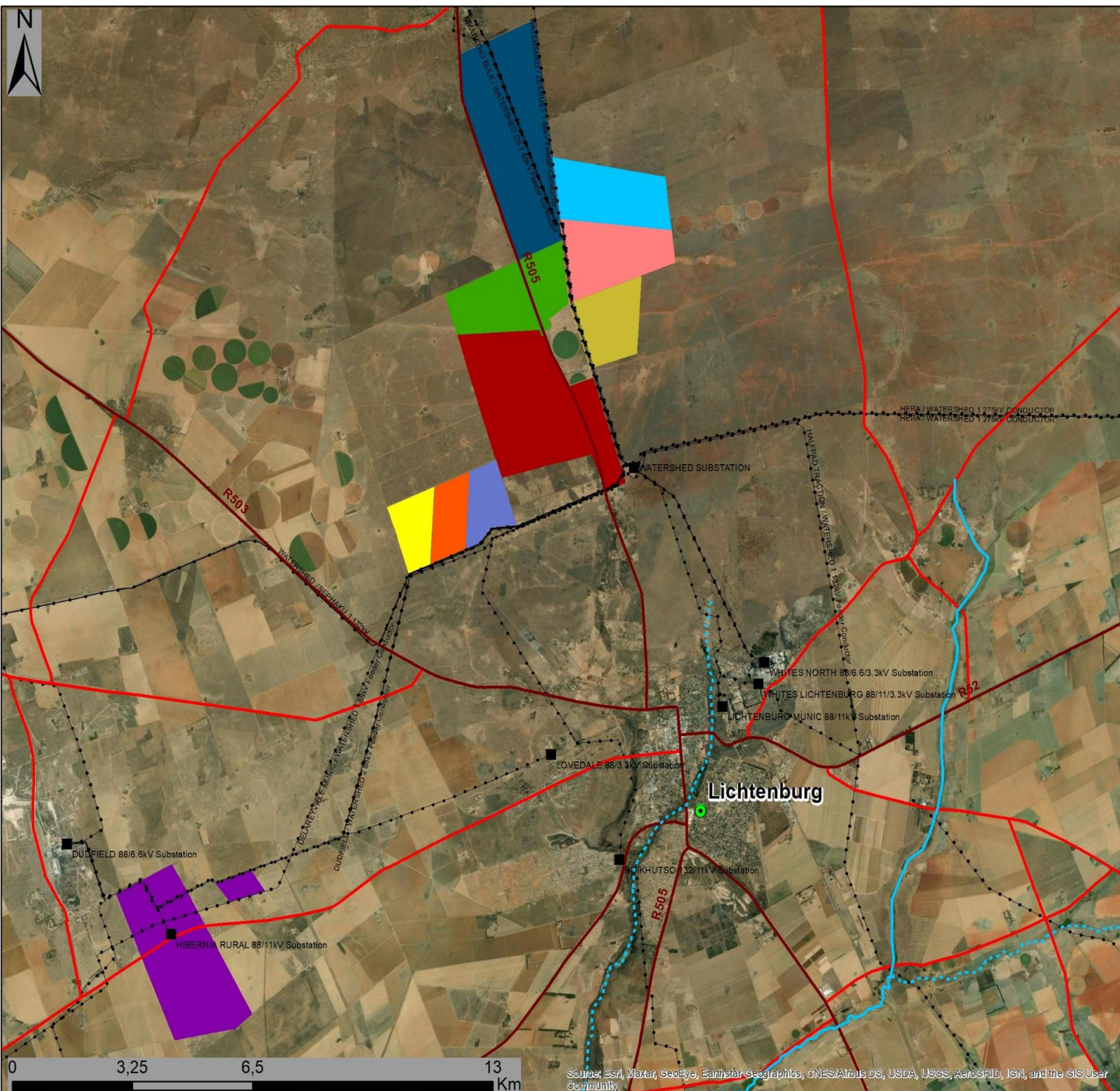
Environmental Sensitivities

- Heritage Feature - Potential Burial Site (10m buffer)
- Avifauna (Medium)
- Ecological Sensitivity (Medium)
- Ecological Sensitivity (Low Medium)

Scale: 20 000
 Projection: LO19
 Map Ref: Setaria Pref Layout Map



Sources: Esri, HERE, Garmin, Intermap, increment P Corp., GEBCO, USGS, FAO, NPS, NRCAN, GeoBase, IGN, Kadaster NL, Ordnance Survey, Esri Japan, METI, Esri China (Hong Kong), (c) OpenStreetMap contributors, and the GIS User Community



Setaria PV Facility and Associated Infrastructure, North West Province

Cumulative Map

Legend

- Town
- Eskom Substation
- Existing Power Lines
- Non-Perennial River
- Perennial River
- National Route
- Regional Road
- Main Road
- Setaria PV Facility

Other known solar PV facilities:

- Barleria PV Facility (in process)
- Dicoma PV Facility (in process)
- Hibernia PV Facility (authorised)
- Tlitseng PV Cluster (authorised)
- Lichtenburg 3 PV Facility (authorised)
- Lichtenburg 2 PV Facility (authorised)
- Lichtenburg 1 PV Facility (authorised)
- Lichtenburg Solar Park (authorised)
- Subsolar PV Cluster (in process)

Scale: 50 000
 Projection: LO19
 Map Ref: Cumulative Map



Source: Esri, Maxar, GeoEye, Earthstar/Geographics, CNES/Airbus DS, USDA, USGS, AeroGRID, IGN, and the GIS User Community