

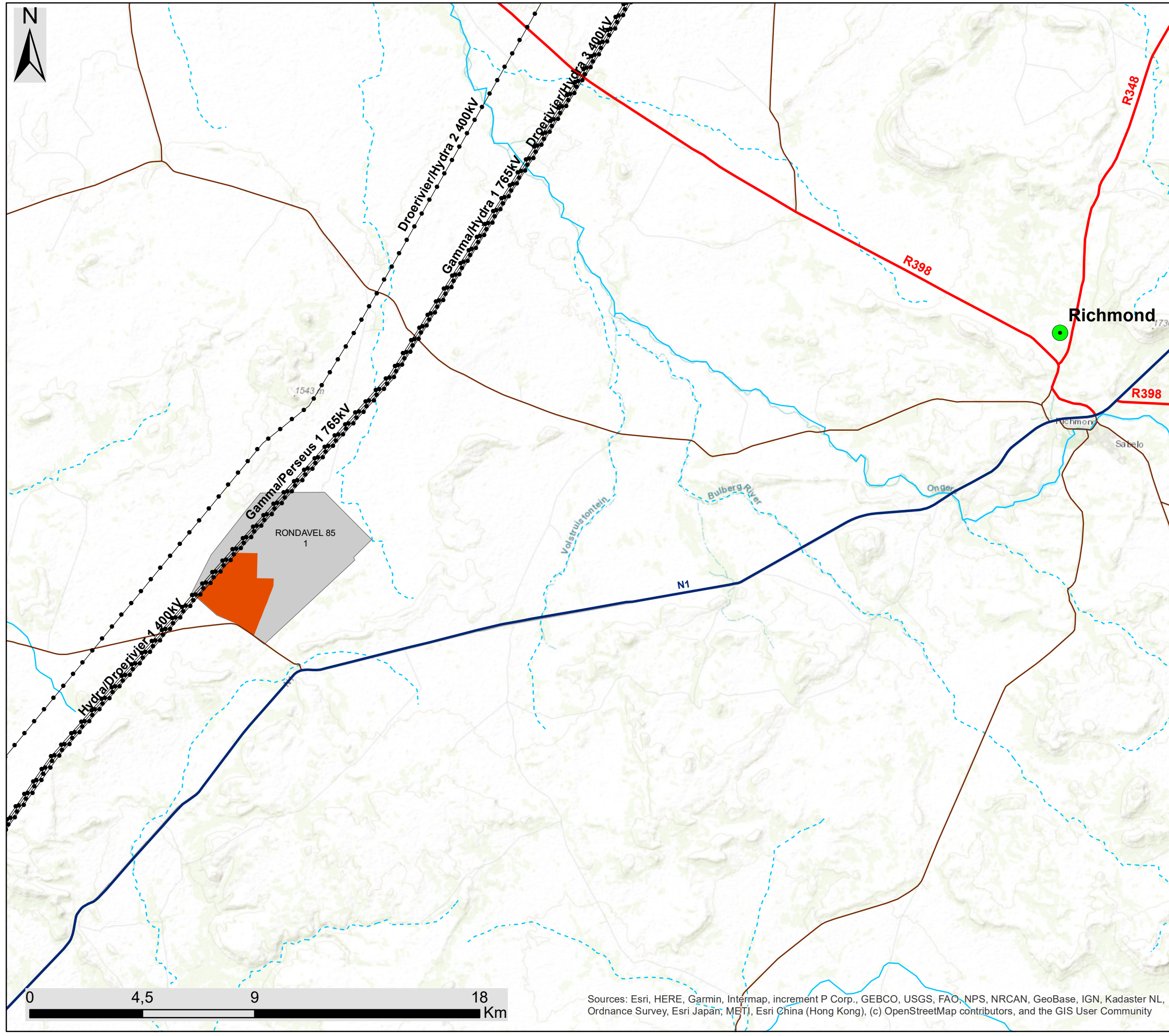


Nku Solar PV, near Richmond, Northern Cape Province

Locality Map

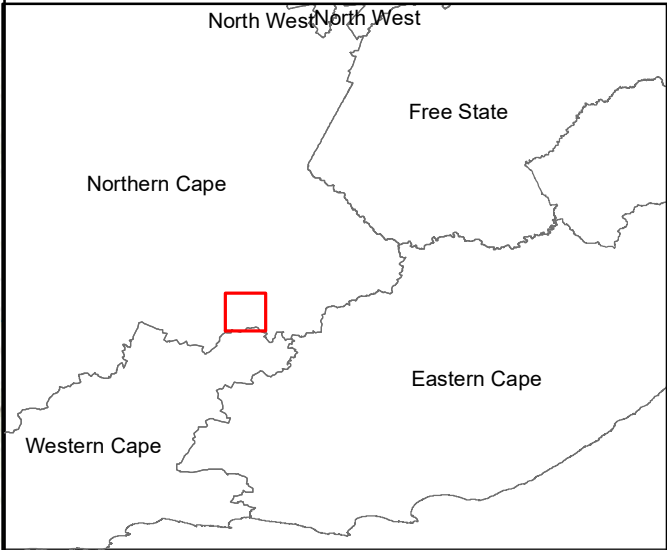
Legend

- Towns
- Existing Power Line
- Main Road
- National Road
- Regional Road
- Non-Perennial River
- Perennial River
- Project Site
- Nku PV Facility Development Area



Sources: Esri, HERE, Garmin, Intermap, increment P Corp., GEBCO, USGS, FAO, NPS, NRCAN, GeoBase, IGN, Kadaster NL, Ordnance Survey, Esri Japan, METI, Esri China (Hong Kong), (c) OpenStreetMap contributors, and the GIS User Community

Scale: 1: 144 621
 Projection: WGS_1984
 Map Ref: Great Karoo REF PV1 - Locality

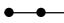







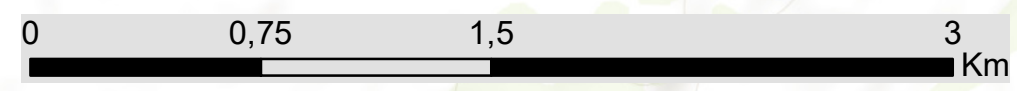
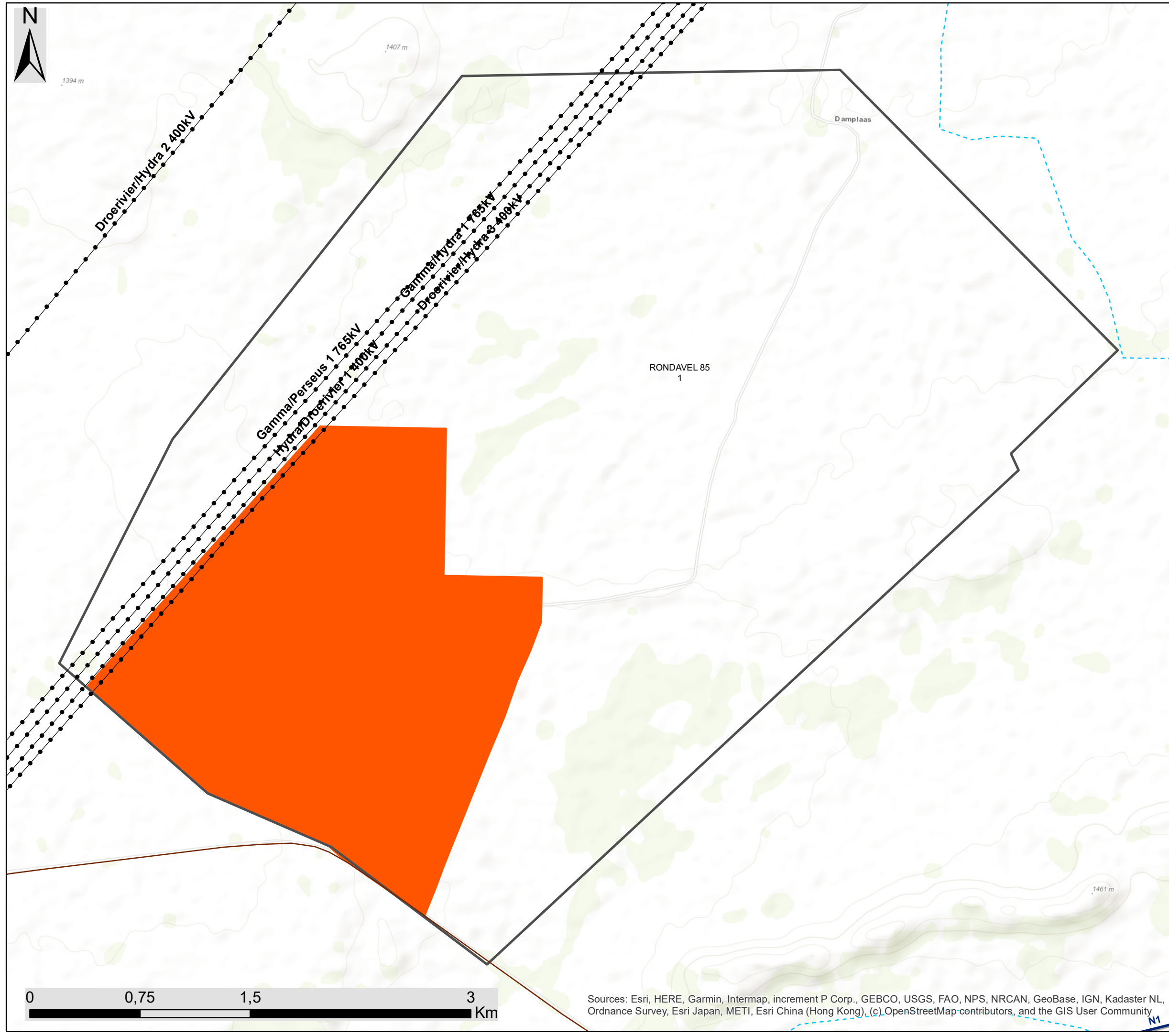


Nku Solar PV Facility, near Richmond, Northern Cape Province

Preliminary Layout Map

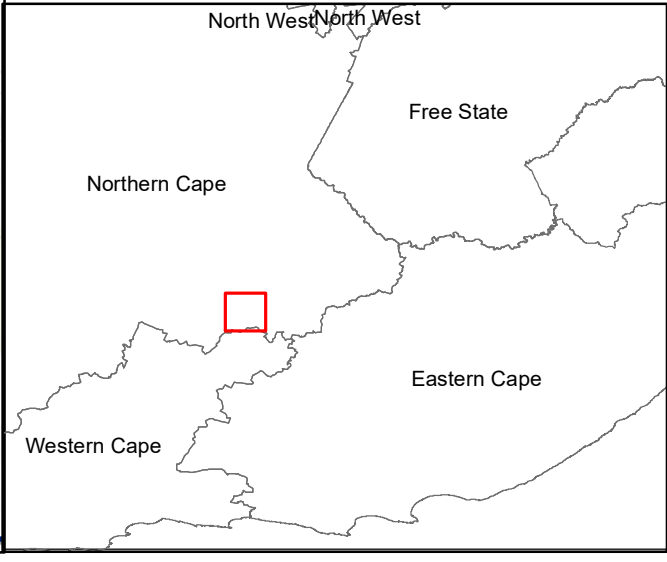
Legend

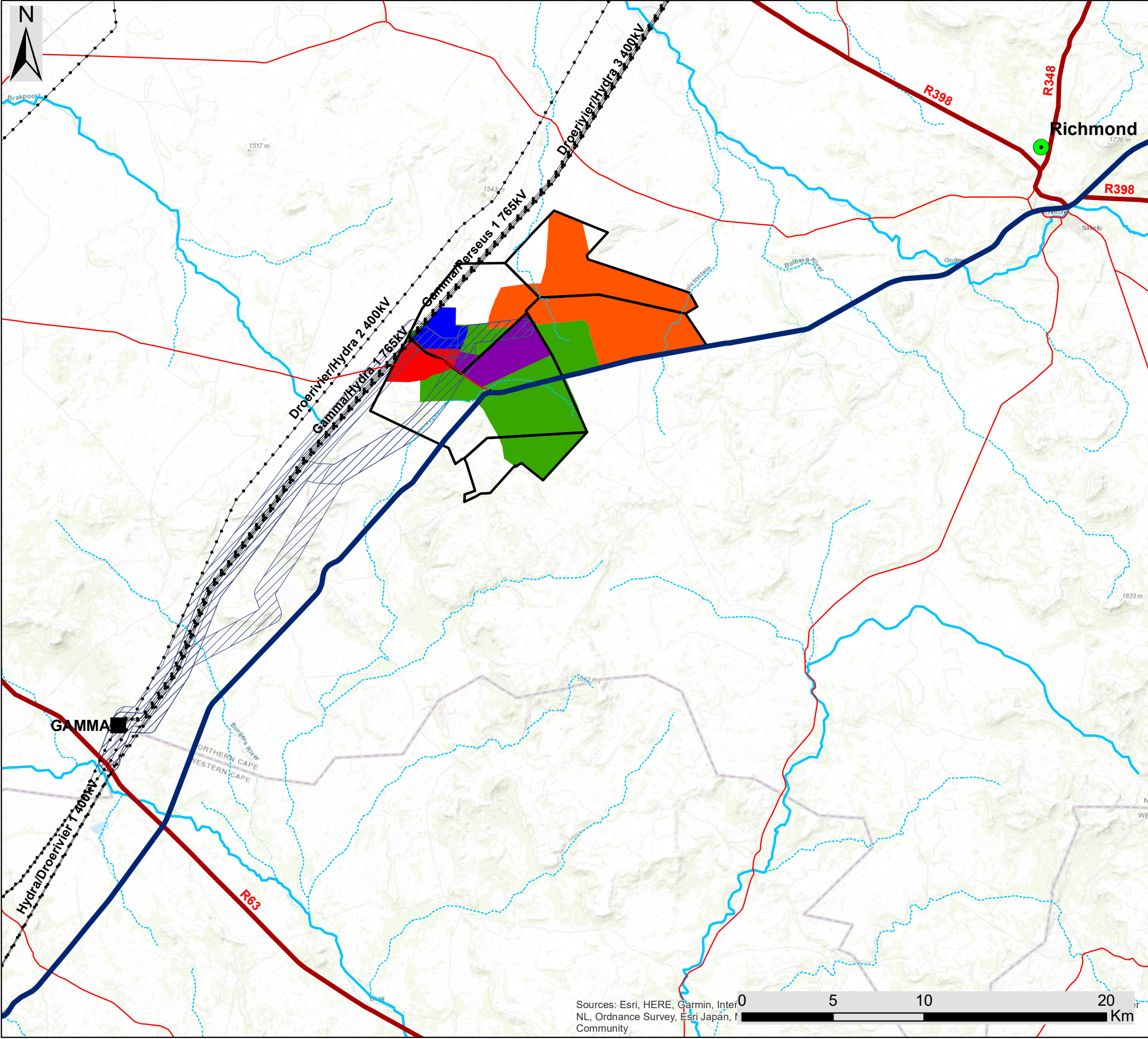
-  Existing Power Line
-  Main Road
-  Non-Perennial River
-  Perennial River
-  Project Site
-  PV Facility Development Area



Sources: Esri, HERE, Garmin, Intermap, increment P Corp., GEBCO, USGS, FAO, NPS, NRCAN, GeoBase, IGN, Kadaster NL, Ordnance Survey, Esri Japan, METI, Esri China (Hong Kong), (c) OpenStreetMap contributors, and the GIS User Community

Scale: 1: 144 621
 Projection: WGS_1984
 Map Ref: Great Karoo REF PV1 - Locality





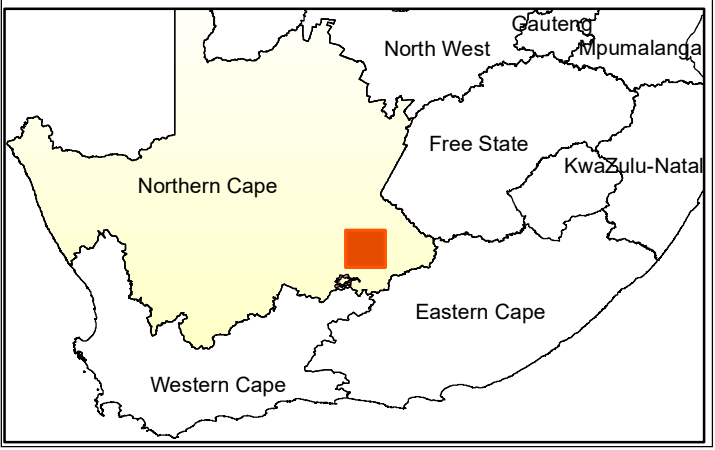
Proposed Greater Karoo Renewable Energy Cluster, Richmond, Northern Cape Province

Locality Map

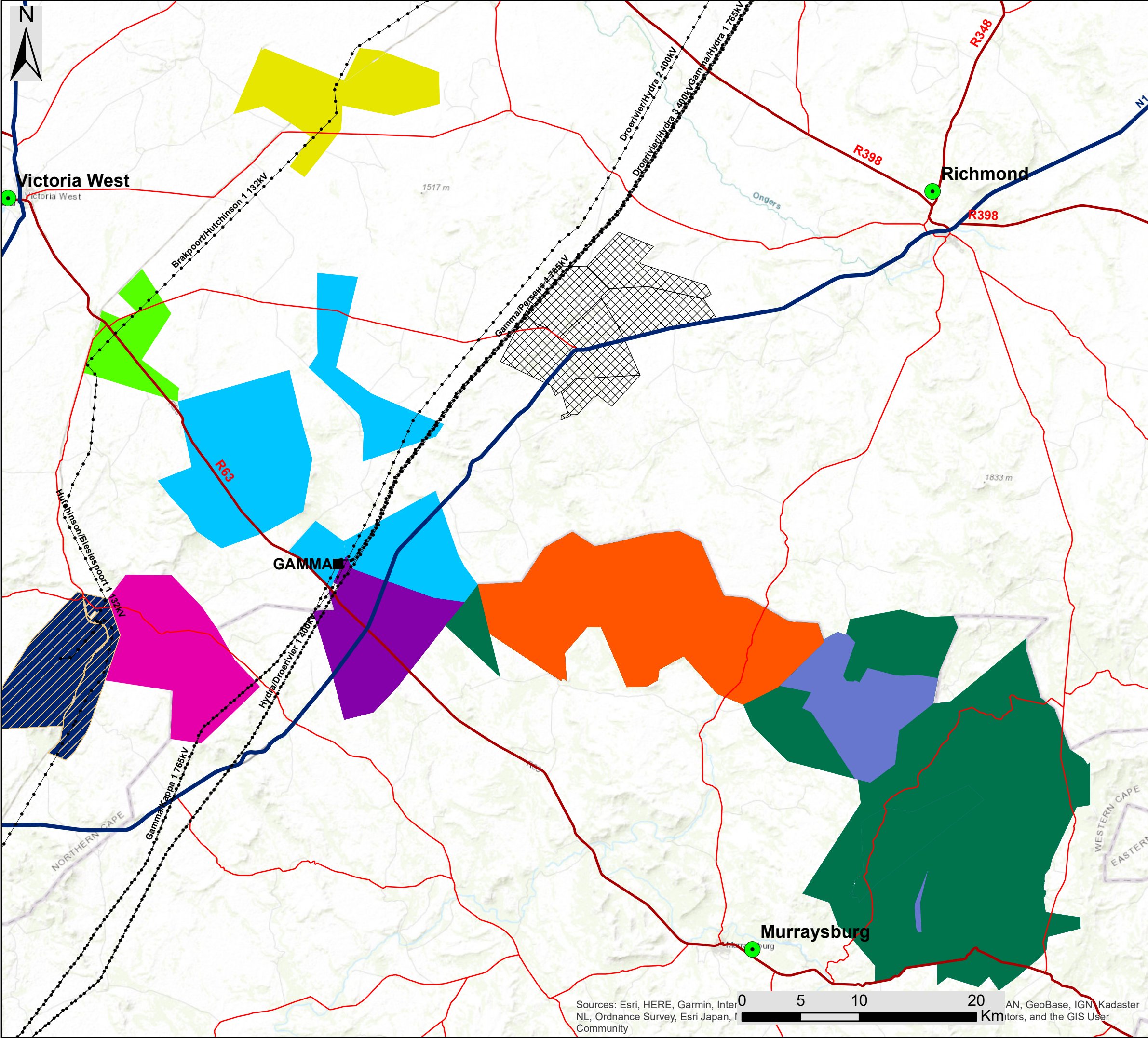
Legend

- Town
- Eskom Substation
- Existing Power Line
- National Road
- Regional Road
- Main Road
- Non-Perennial River
- Perennial River
- Grid Connection Corridor Alternatives (1km wide)
- Nku Solar PV
- Moriri Solar PV
- Kwana Solar PV
- Angora Wind Energy Facility
- Merino Wind Energy Facility
- Project Sites

Scale: 1: 250 000
 Projection: WGS_1984
 Map Ref: Great Karoo BID - Locality



Sources: Esri, HERE, Garmin, InterNL, Ordnance Survey, Esri Japan, Community
 0 5 10 20 Km

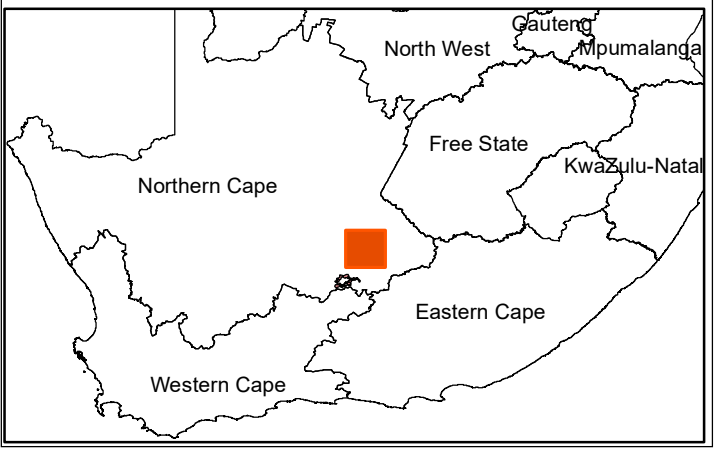


Proposed Greater Karoo Renewable Energy Cluster, Richmond, Northern Cape Province

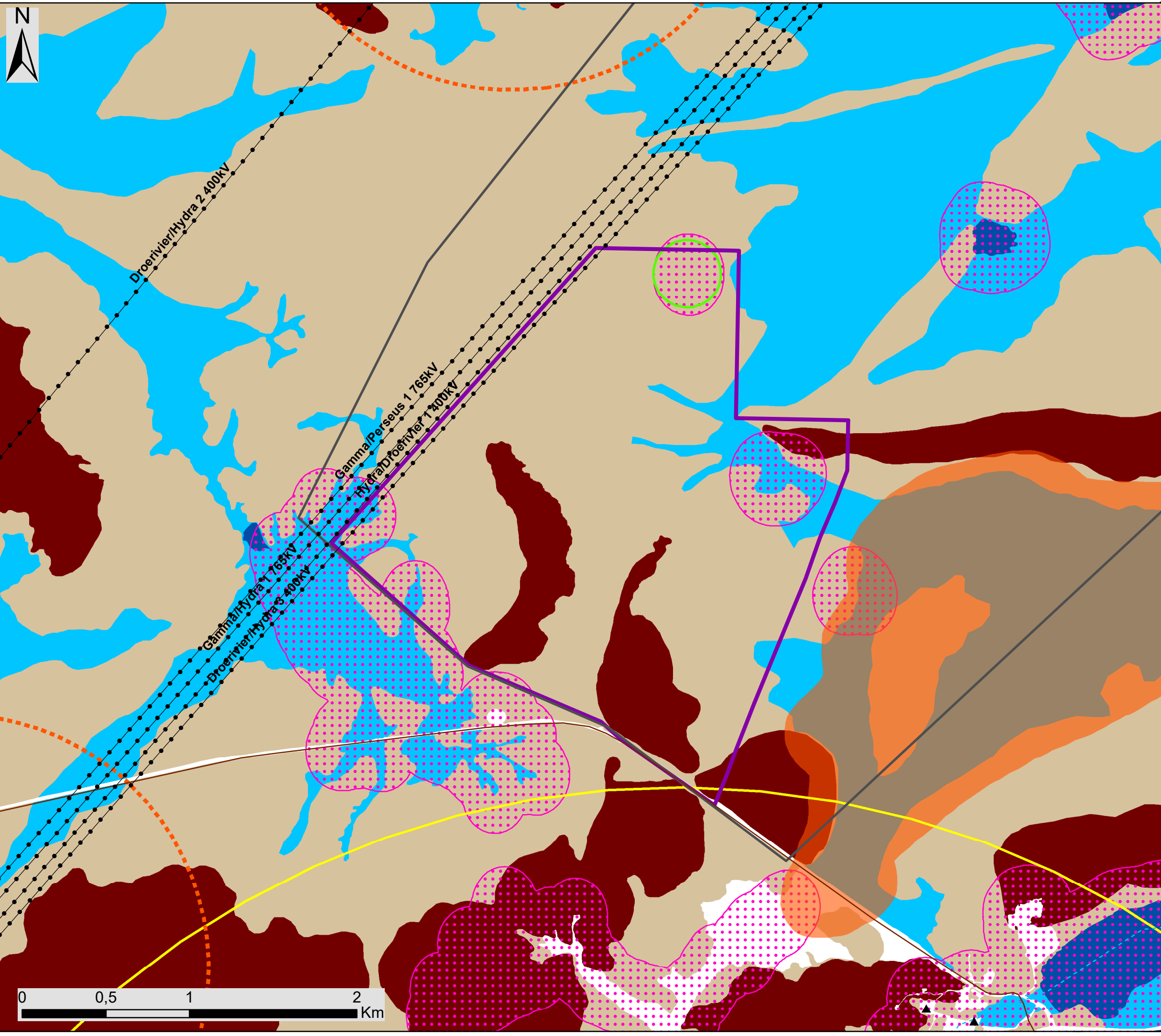
Cumulative Map

- Legend**
- Town
 - Eskom Substation
 - Existing Power Line
 - National Road
 - Regional Road
 - Main Road
 - Great Karoo Renewable Energy Cluster
- Known Authorised Renewable Energy Facilities (based on affected property)**
- Nobelsfield Wind Energy Facility
 - Bietjiesfontein Solar Energy Facility
 - Karoo Renewable Energy Facility
 - Brakpoort Solar PV Facility
 - Umsinde Emoyeni Wind Energy Facility
 - Aurora Solar PV Facility
 - Mainstream Renewable Energy Cluster
 - Ishwati Emoyeni Wind Energy Facility
 - Trouberg Wind Energy Facility
 - Modderfontein Wind Energy Facility

Scale: 1: 250 000
 Projection: WGS_1984
 Map Ref: Great Karoo Cumulative



Sources: Esri, HERE, Garmin, InterNL, Ordnance Survey, Esri Japan, Community
 0 5 10 20 Km
 AN, GeoBase, IGN, Kadaster



Nku Solar PV Facility, near Richmond, Northern Cape Province

Preliminary Sensitivity Map

Legend

- Existing Power Line
- Main Road
- Non-Perennial River
- Perennial River
- Project Site
- PV Facility Development Area

Environmental Features & Sensitivity

- Avifauna - PV Panel No-Go (200m)
- Verreaux Eagle - Medium Sensitivity Buffer (5.2km)
- Tawny Eagle - Infrastructure No-Go (1.5km)
- Bats - Moderate Sensitivity Buffer (150m)
- Bats - High Sensitivity Buffer (200m)
- Drainage - High Ecological Sensitivity
- Open water - High Ecological Sensitivity
- Mountain slopes - Medium-High Ecological Sensitivity
- Karroid plains - Medium Ecological Sensitivity

Scale: 1: 24 000
 Projection: WGS_1984
 Map Ref: Great Karoo REF PV3 - Prelim Sens

