

APPENDIX C2:

Site Notice and Newspaper Advertisement

Advertisements

NOTICE OF ENVIRONMENTAL IMPACT ASSESSMENT, BASIC ASSESSMENT & PUBLIC PARTICIPATION PROCESSES FOR THE PROPOSED DEVELOPMENT OF THE GREAT KAROO CLUSTER OF RENEWABLE ENERGY FACILITIES & GRID CONNECTION INFRASTRUCTURE, NEAR RICHMOND, NORTHERN CAPE PROVINCE

Applicant: Great Karoo Renewable Energy (Pty) Ltd.

Proposed Activity: Establishment of three (3) Solar Photovoltaic (PV) Energy Facilities, two (2) Wind Energy Facilities & grid connection infrastructure comprising a 132kV central collector substation & a 132kV power line to enable the connection of five (5) renewable energy facilities to the national grid for the evacuation of the generated electricity. The connection point to the national grid will be the existing Eskom Gamma Substation. Infrastructure associated with each project includes:

Solar Energy Facilities	Wind Energy Facilities	Grid Connection Infrastructure
<ul style="list-style-type: none"> » Solar PV array comprising PV modules & mounting structures. » Inverters & transformers. » Cabling between the panels. » 33/132kV onsite facility substation. » Cabling from the onsite substation to the collector substation (either underground or overhead). » Electrical & auxiliary equipment required at the collector substation that serves that solar energy facility, including switchyard/bay, control building, fences, etc. » Battery Energy Storage System (BESS). » Site offices & maintenance buildings, including workshop areas for maintenance & storage. » Laydown areas. » Access roads & internal distribution roads. 	<ul style="list-style-type: none"> » Wind turbines. » Concrete turbine foundations & turbine hardstands. » Inverters & transformers. » Temporary laydown areas which will accommodate storage & assembly areas. » Cabling between the turbines, to be laid underground where practical. » A temporary concrete batching plant. » 33/132kV onsite facility substation. » Underground cabling from the onsite substation to the collector substation. » Electrical & auxiliary equipment required at the collector substation that serves that wind energy facility, including switchyard/bay, control building, fences, etc. » Battery Energy Storage System (BESS). » Access roads & internal distribution roads. » Site offices & maintenance buildings, including workshop areas for maintenance & storage. 	<ul style="list-style-type: none"> » Central collector substation which consists of: <ul style="list-style-type: none"> * 33/132kV collector substation. * Associated equipment, infrastructure, & buildings. * Temporary & permanent laydown areas. » Distribution Line: <ul style="list-style-type: none"> * A double-circuit 132kV distribution line to connect the central collector 132kV substation to the existing Eskom Gamma Substation will be constructed.

Project Location: The five (5) proposed renewable energy facilities, along with their associated grid connection infrastructure, are located approximately 35km South-West of Richmond along the N1 and approximately 80km South-East of Victoria West along the R63 in the Northern Cape Province, within the Ubuntu Local Municipality, and the Pixley Ka Seme District Municipality. A portion (approximately 2km) of the grid corridor falls within the Beaufort West Local Municipality which forms part of the Central Karoo District Municipality in the Western Cape Province.

Solar Energy Facilities 100MW		Wind Energy Facilities 140MW	
Project	Property	Project	Properties
Nku Solar PV Facility	» Farm Rondavel 85 (Portion 0 & 1)	Angora Wind Energy Facility	» Portion 11 of Farm Gegundefontein 53
Moriri Solar PV Facility			» Portion 0 of Farm Vogelstruisfontein 84
Kwana Solar PV Facility		» Portion 1 of Farm Rondavel 85	
		Merino Wind Energy Facility	» Portion 0 of Farm Rondavel 85
			» Portion 9 of Farm Bult & Rietfontein 96
			» Portion 0 of Farm Vogelstruisfontein 84

Savannah Environmental website: <https://savannahsa.com/public-documents/energy-generation/the-great-karoo-cluster-of-renewable-energy-facilities/>

Collector Electrical Grid Infrastructure (EGI)		
Project	Properties	
Collector EGI (132kV)	<ul style="list-style-type: none"> » Portion 0 of Farm Annex Rondavel 86 » Portion 1 of Farm Uit Vlugt Fontein 265 » Portion 0 of Farm Wynandsfontein 91 » Portion 1 of Farm Wynandsfontein 91 » Portion 3 of Farm Vlekfontein 90 » Portion 0 of Farm Niuewe Fontein 89 » Portion 0 of Farm Burgersfontein 92 	<ul style="list-style-type: none"> » Portion 1 of Farm Nieuwe Fontein 89 » Portion 0 of Farm Rondavel 85 » Portion 1 of Farm Rondavel 85 » Portion 0 of Farm Kleinfontein 93 » Portion 1 of Farm Bult & Rieffontein 96 » Remaining extent of Portion 3 of Farm Schietkuil

Savannah Environmental website: <https://savannahsa.com/public-documents/grid-infrastructure/the-great-karoo-cluster-grid-connection-infrastructure/>

Scoping & Environmental Impact Assessment (S&EIA) & Basic Assessment (BA) Processes: In terms of Sections 24 & 24D of the National Environmental Management Act (No 107 of 1998), as read with Government Notice R324 – R327, as amended, a S&EIA process is required for each renewable energy facility. Similarly, a BA process is required for the grid connection infrastructure. Savannah Environmental is undertaking the required S&EIA, BA, & public participation processes for these projects.

EIA Reports & BA Report available for review & comment: The EIA Reports for the PV facilities and the Merino Wind Farm are available for download, review, & comment on the Savannah Environmental website (see applicable links in tables above). The 30-day review & comment period of the EIA Reports is from **Friday, 13 May 2022** until **Monday, 13 June 2022**. The 30-day review & comment period of the BA Report for the grid connection infrastructure is from **Friday, 20 May 2022** until **Monday, 20 June 2022**. The availability of the EIA Report for the Angora Wind Farm, as well as the 30-day review and comment period will be communicated in due course.

Information Session: Interested and affected parties (I&APs) are invited to attend the Information Session which will take place at Richmond Town Hall on **Thursday, 26 May 2022** at **17h00**. The Information Session will start with a poster display at **17h00** after which those that are interested in attending the presentation can attend the presentation which will start at **17h30**. The Information Session will take place in compliance with the current COVID-19 protocols, and I&APs are therefore required to register their attendance. Please contact Nicolene Venter (details below) to register your attendance.

To obtain further information & register on the project database, please submit your name, contact information & interest in the project to the contact person below.

Nicolene Venter or Nondumiso Bulunga at Savannah Environmental
 P.O. Box 148, Sunninghill, 2157
 Tel: 011 656 3237 / Fax: 086 684 0547
 Mobile: 060 978 8396 (including please call me)
 Email: publicprocess@savannahsa.com
 Website: www.savannahsa.com



ARRIVE SAFE – AVOID DISTRACTED DRIVING

APRIL is recognised as Distracted Driving Awareness Month in the US. Distracted driving has become endemic across the world and can mainly be attributed to texting while driving. Sending or receiving a text takes a driver's eyes off the road for about five seconds. If you're driving at 80km/h that is a distance about as long as a soccer field. Not only is holding your phone while driving illegal in South Africa, but texts are more likely to have an accident than drunk drivers. However, distracted driving extends beyond texting.

There are four types of distracted driving. Visual – taking your eyes off the road, to text or, for example, to adjust your radio. Manual – taking your hands off the steering wheel. Some people eat, do their makeup, shave, or even clean their teeth while driving! Auditory – hearing something not related to driving, like the beat that is so loud it bounces the car down the road. Cognitive – thinking about something other than driving, perhaps daydreaming about your next holiday. The dangers are obvious. If you're not focused on the task at hand, it could lead to an accident, with damage, injury or even death. This is putting your life and that of others on the road at risk. Yet, there are further safety dangers from distracted drivers missing critical events that most people don't think about. You might think oh, but I only look at my phone while waiting at the robots, so I'm not actually driving when I use it. However, criminals are relying on you to be distracted so that they can strike. At intersections, the distraction of picking up your phone while you are stopped sets you up as an easy target since your attention is diverted from the road and your surroundings. This also applies at a service station or in a car park.

With another long weekend on hands, here are some tips for the road. Avoid picking up your phone. If it's an emergency, rather get your passenger to answer or text for you. Using hands-free isn't any safer because it takes your thoughts away from driving and your surroundings. Be alert. Keep your eyes on the road and pay attention to what is happening around you, so that you'll notice if a car or bike is about to swerve into your lane or a pedestrian is about to step out in front of your car.

Also, looking alert while driving may be enough to dissuade criminals from targeting you. Set and check the address in the GPS, adjust the climate or temperature controls, and select the radio station or music before your trip. The idea is to avoid small distractions that will take your attention away from driving. Don't do anything that takes your hands off the steering wheel. Rather eat, drink, and attend to personal grooming before or after your trip. Ensure that small children are strapped in, and pets are secured before you drive. Also, limit the level of activity in the car to reduce distractions. Consider not only seeing but hearing what is going on outside your car. You could pick up a threat from behind just by hearing something. Limit the volume of your music so that you can still hear emergency sirens. Practice courteous road use. Also, avoid rubbernecking, as it could distract you enough that you slow down or slam on brakes, which could then cause an accident.

Rather be safe than sorry. Ensure that you are aware of your surroundings while driving and that you can get out of the way or get away should the need arise. For your safety and the safety of everyone around you.

Oos-Kaap toon minder padsterftes oor Paasnaweek

ALTESAME 162 mense het vanjaar oor Paasnaweek op die land se paaie omgekom. Dit is 73 (31,5%) minder sterftes vergeleke met verlede jaar se 235 sterftes oor Paasnaweek. Minder noodlottige ongelukke (134) is ook vanjaar tydens Paasnaweek aangemeld vergeleke met die vorige jaar (189). Daar is 28,6% minder ongelukke vanjaar oor Paasnaweek aangemeld vergeleke met verlede jaar. Die meeste van vanjaar se ongelukke oor Paasnaweek het op Goeie Vrydag en Saterdag plaasgevind. Die meeste padsterftes het vanjaar weer in die nag plaasgevind. 'n Nuwe verskynsel is egter opgemerk en dit is dat die padsterftes vanjaar veral 'n skerp styging soggens tussen 04:00 en 05:00 getoon het. Hierdie statistieke is verlede week tydens 'n mediakonferensie deur die minister van Vervoer, Fikile Mbalula, bekend gemaak. Al die provinsies behalwe die Wes-Kaap en Mpumalanga het vanjaar 'n afname in padsterftes aangeteken. KwaZulu-Natal het meer as 60% minder padsterftes gehad vergeleke met verlede jaar. Dié provinsie se verkeer het egter weens die vloede vanjaar met 21% oor Paasnaweek afgeneem. Die Oos-Kaap het verlede jaar 27 sterftes gehad, maar die syfer is vanjaar 20. Volgens Mbalula was daar vanjaar oor Paasnaweek ook minder motoriste vervolp vir onder meer spoed, dronkbestuur, die bestuur van ongelisensieerde voertuie en bestuur sonder om veiligheids gordels vas te maak vergeleke met verlede jaar. Altesame 2 395 verkeersboetes is vanjaar vir spoed uitgereik vergeleke met 5 923 verlede jaar.

Diesilverhoging gaan verbruiker hard slaan

VANDEESWEEK se verlaging in die prys van petrol is goeie nuus vir motoriste, maar die Automobiel-Assosiasie (AA) sê die beduidende styging in die prys van diesel en paraffien gaan 'n noemenswaardige uitwerking op lewenskoste in Suid-Afrika hê. Die prys van petrol het Dinsdag om middernag met 12 sent per liter gedaal, maar diesel is tussen 92c/liter en 98c/liter duurder. Die prys van paraffien verhoog met sowat 80 sent.

Volgens die AA gaan die daling in die petrolprys op kort termyn 'n mate van verligting bring. Die skerp styging in die prys van diesel en paraffien gaan ongetwyfeld groter finansiële druk op miljoene Suid-Afrikaners plaas wat reeds sukkel om kop bo water te hou. Volgens die departement van minerale bronne en energiesake het die gemiddelde internasionale prys van petrol gedaal, terwyl dié van diesel en paraffien gestyg het. Daar is steeds minder uitvoere uit Rusland — wat nog in 'n oorlog met Oekraïne gewikkel is — terwyl voorraadvlakke laag bly. In Suid-Afrika lê die winter voor en paraffien word nie net vir kosmaak en beligting gebruik nie, maar ook vir verhitting.

Die styging in die dieselprijs gaan 'n groot uitwerking op die ekonomie hê, omdat diesel 'n groot gedeelte van die insetkoste in die vervaardiging-, padvrag-, landbou- en mynbedryf beslaan — en dié insetkoste gaan na die verbruiker deurgegee word. Die AA sê die verligting wat 'n verlaging in die brandstofheffing in Februarie gebring het, help minstens om die uitwerking te versag, maar 'n meer permanente oplossing moet gevind word.

“Die regering het korttermynverligting deur die verlaging in die algemene brandstofheffing gebied, maar dit eindig aan die einde van die maand. Indien die heffing na sy vasgestelde koers terugkeer, gaan dit nog R1,50/liter by die prys van petrol en brandstof voeg en die pryse veel hoër opstoot. “Die vraag is nou hoe die regering die brandstofprys in die toekoms gaan hanteer en hoe daar uiteindelik volhoubare verligting vir Suid-Afrikaanse verbruikers gaan kom,” sê die AA.

NORTHERN CAPE LIQUOR ACT, 2008

NOTICE OF THE INTENTION TO APPLY IN TERMS OF SECTION 20 OF THE ACT FOR A LICENSE. Notice is hereby given that it is the intention to lodge the abovementioned application, particulars of which appear hereunder with the Northern Cape Liquor Board.

1	2	3	4	5	6
Municipality	Full name, street and postal address of applicant	Kind of License Applied for	Kinds of Liquor to be sold	Name under which business is to be conducted and full address of premises	Extra items to be sold (section 4(5)(a) and (b))
Emthanjeni Municipality	De Aar Stone Crushers Reg No: 1998/012728/23 c/o Truter & Vorster 48 Du Toit Street De Aar 7000	Restaurant Liquor Licence	All kinds of liquor	Sweetfontein Boutique Farm Lodge Remainder of Portion 3 of the farm Sweetfontein No. 92, Britstown	N/A

PLACE: DE AAR

Date: 05/04/2022

Signature of applicant or person authorized to sign application

Gratis regstreekse Wiskunde-klasse berei matrieks voor

DIE 2022-matriekgroep het die afgelope twee jaar geweldig baie klastyd verloor. Daarom het Solidariteit Skoleondersteuningsentrum (SOS) se Wiskunde-afdeling by Die Wolkskool besluit om die volgende agt weke regstreekse aanlyn klasse aan te bied.

Die klasse, wat gratis aangebied word, sal die matrikulante help met die mees komplekse Wiskunde-konsepte.

Volgens Lampies Lotter, die SOS se Wiskunde-dosent by Die Wolkskool, sal die klasse vanaf 21 April tot 9 Junie vanjaar elke Donderdag regstreeks deur Zoom uitgesaai word. “Matrikulante en Graad 11-leerders is welkom om in te skakel en deel te neem aan die klas.

Indien matrikulante enige vrae het, wat nie tydens die sessie behandel is nie, kan hulle my gerus kontak en terugvoer ontvang,” verduidelik Lotter. “Ons wil verseker dat elke matrikulant die belangrikste Wiskunde-konsepte voor die Junie-eksamen onder die knie kry.”

Wiskunde-klasse sal elke Donderdag regstreeks uitgesaai word van 21 April tot 9 Junie 2022 om 16:30.

Hier is die lys van onderwerpe: • Week 1 (21 April) — Analitiese meetkunde (opname beskikbaar op Die Wolkskool). • Week 2 (28 April) — Analitiese meetkunde. • Week 3 (5 Mei) — Funksies en inverses. • Week 4 (12 Mei) — Eksponensieële en logaritmiëse funksies. • Week 5 (19 Mei) — Polinome. • Week 6 (2 Junie) — Differentiaalrekening. • Week 7 (2 Junie) — Finansiële Wiskunde. • Week 8 (9 Junie) — Finansiële Wiskunde.

Om in te skakel op die klasse registreer sommer nou op: <https://form.jotform.com/221012849886058>

Die Wolkskool, 'n inisiatief van Solidariteit Skoleondersteuning (SOS) beplan vanaf 27 Junie tot 1 Julie 2022 'n slypskool in Pretoria in Wiskunde, Tegnieke Wiskunde en Wiskundige Geletterdheid, asook 'n aanlyn slypskool in vakke soos Lewenswetenskappe, Fisiese Wetenskappe, Afrikaans Huistaal, Engels (EAT) en Rekeningkunde.

Die SOS het in 2020 regstreekse aanlyn klasse aangebied in Wiskunde, Besigheidstudies, Lewenswetenskappe, Afrikaans Huistaal, Fisiese Wetenskappe, English (EAT), Wiskundige Geletterdheid en Rekeningkunde. Die klasse is deur 7000+ matrikulante bygewoon en is tans gratis beskikbaar op: <https://skole.co.za/gr-12-slypskool/>

LAERSKOOL DE AAR PRIMARY SCHOOL VAKATURES VACANCIES

POS 1: DEPARTEMENTELE POS BEGINDATUM: 1 AUGUSTUS 2022 GRAAD 7 AFRIKAANS SENIOR FASE — WISKUNDE EN TEGNOLOGIE

POST 2: SCHOOL GOVERNING BODY POST STARTING DATE: 19 JULY – 31 DECEMBER 2022 GRADE 7 ENGLISH SENIOR PHASE — MATHEMATICS / TECHNOLOGY

Aansoek sluit: Maandag, 23 Mei 2022 om 12:00.

Applications close: Monday, 23 May 2022 at 12:00.

Vereistes: / Requirements:

1. Aansoekbrief. / Letter of application
2. CV.
3. Gewaarmerkte bewyse — kwalifikasies. Certified copied of qualifications.
4. Jongste getuigskrifte. Testimonials.
5. Buitemuurse bedrywighede. Extramural activities.
6. SACE sertifikaat / SACE certificate.

Navrae / Enquiries: Die Skoolhoof / The Principal, PA le Roux Tel: (053) 631-2772 Stuur aansoek na E-pos: hooflaerskool@telkomsa.net

Slegs kandidate wat op die kortlys is sal gekontak word. Only shortlisted candidates will be contacted. T050422A M6

Skenk BLOED en red 'n LEWE!
Life is precious!
Donate BLOOD and save a LIFE!

NOTICE OF ENVIRONMENTAL IMPACT ASSESSMENT, BASIC ASSESSMENT & PUBLIC PARTICIPATION PROCESSES FOR THE PROPOSED DEVELOPMENT OF THE GREAT KAROO CLUSTER OF RENEWABLE ENERGY FACILITIES & GRID CONNECTION INFRASTRUCTURE, NEAR RICHMOND, NORTHERN CAPE PROVINCE

Applicant: Great Karoo Renewable Energy (Pty) Ltd.

Proposed Activity: Establishment of three (3) Solar Photovoltaic (PV) Energy Facilities, two (2) Wind Energy Facilities & grid connection infrastructure comprising a 132kV central collector substation and a 132kV power line to enable the connection of five (5) renewable energy facilities to the national grid for the evacuation of the generated electricity. The connection point to the national grid will be the existing Eskom Gamma Substation. Infrastructure associated with each project includes:

Solar Energy Facilities	Wind Energy Facilities	Grid Connection Infrastructure
<ul style="list-style-type: none"> Solar PV array comprising PV modules & mounting structures. Inverters & transformers. Cabling between the panels. 33/132kV onsite facility substation. Cabling from the onsite substation to the collector substation (either underground or overhead). Electrical & auxiliary equipment required at the collector substation that serves that solar energy facility, including switchyard/bay, control building, fences, etc. Battery Energy Storage System (BESS). Site offices & maintenance buildings, including workshop areas for maintenance & storage. Laydown areas. Access roads & internal distribution roads. 	<ul style="list-style-type: none"> Wind turbines. Concrete turbine foundations & turbine hardstands. Inverters & transformers. Temporary laydown areas which will accommodate storage & assembly areas. Cabling between the turbines, to be laid underground where practical. A temporary concrete batching plant. 33/132kV onsite facility substation. Underground cabling from the onsite substation to the collector substation. Electrical & auxiliary equipment required at the collector substation that serves that wind energy facility, including switchyard/bay, control building, fences, etc. Battery Energy Storage System (BESS). Access roads & internal distribution roads. Site offices & maintenance buildings, including workshop areas for maintenance & storage. 	<ul style="list-style-type: none"> Central collector substation which consists of: <ul style="list-style-type: none"> 33/132kV collector substation. Associated equipment, infrastructure, & buildings. Temporary & permanent laydown areas. Distribution Line: <ul style="list-style-type: none"> A double-circuit 132kV distribution line to connect the central collector 132kV substation to the existing Eskom Gamma Substation will be constructed.

Project Location: The five (5) proposed renewable energy facilities, along with their associated grid connection infrastructure, are located approximately 35km South-West of Richmond along the N1 and approximately 80km South-East of Victoria West along the R3 in the Northern Cape Province, within the Ubungu Local Municipality, and the Pletley Ka Seme District Municipality. A portion (approximately 2km) of the grid corridor falls within the Beaufort West Local Municipality which forms part of the greater Cape Winelands District Municipality in the Western Cape Province.

Project	Property	Project	Properties
Nieu Solar PV Facility	Farm Rondavel 85 (Portion 0 & 1)	Angora Wind Energy Facility	<ul style="list-style-type: none"> Portion 11 of Farm Oegundfontein 53 Portion 0 of Farm Vogelstuitfontein 84 Portion 1 of Farm Rondavel 85 Portion 0 of Farm Rondavel 85
Morisi Solar PV Facility		Meirino Wind Energy Facility	<ul style="list-style-type: none"> Portion 1 of Farm Rondavel 85 Portion 0 of Farm Rondavel 85 Portion 9 of Farm Bult & Rietfontein 96 Portion 0 of Farm Vogelstuitfontein 84

Savannah Environmental website: <https://savannahsa.com/public-documents/energy-generation/the-great-karoo-cluster-of-renewable-energy-facilities/>

Project	Properties
Collector EGI (132kV)	<ul style="list-style-type: none"> Portion 0 of Farm Annex Rondavel 86 Portion 1 of Farm Ull Vuylt Fontein 265 Portion 0 of Farm Wynandfontein 91 Portion 1 of Farm Wynandfontein 91 Portion 3 of Farm Vlekfontein 90 Portion 0 of Farm Nieuwe Fontein 89 Portion 0 of Farm Burgersfontein 92 Portion 1 of Farm Nieuwe Fontein 89 Portion 1 of Farm Nieuwe Fontein 89 Portion 0 of Farm Rondavel 85 Portion 1 of Farm Rondavel 85 Portion 0 of Farm Kleinfontein 93 Portion 1 of Farm Bult & Rietfontein 96 Remaining extent of Portion 3 of Farm Schielkui

Savannah Environmental website: <https://savannahsa.com/public-documents/grid-infrastructure/the-great-karoo-cluster-grid-connection-infrastructure/>

Scoping & Environmental Impact Assessment (S&EIA) & Basic Assessment (BA) Processes: In terms of Sections 24 & 24D of the National Environmental Management Act (No 107 of 1998), as read with Government Notice R324 – R327, as amended, a S&EIA process is required for each renewable energy facility. Similarly, a BA process is required for the grid connection infrastructure. Savannah Environmental is undertaking the required S&EIA, BA, & public participation processes for these projects.

EIA Reports & BA Report available for review & comment: The EIA Reports for the PV facilities and the Meirino Wind Farm, as well as the BA Report for the grid connection infrastructure are available for download, review, & comment on the Savannah Environmental website (see applicable links in tables above). The 30-day review & comment period of the EIA Reports and BA Report is from **Tuesday, 10 May 2022** until **Thursday, 09 June 2022**. The availability of the EIA Report for the Angora Wind Farm for a 30-day review and comment period will be communicated in due course.

Public Meeting: Interested and affected parties (I&APs) are invited to attend the Public Meeting which will take place at Richmond Town Hall on **Thursday, 19 May 2022** at 17h30. The Public Meeting will take place in compliance with the current COVID-19 protocols, and I&APs are therefore required to register their attendance. Please contact Nicoleene Venter or Nondumiso Bulunga (details below) to register your attendance.

To obtain further information & register on the project database, please submit your name, contact information & interest in the project to the contact person below.

Nicoleene Venter or Nondumiso Bulunga of Savannah Environmental
P.O. Box 148, Sunninghill, 2157
Tel: 011 656 3237
Fax: 086 684 0547
Mobile: 060 978 8396 (including please call me)
Email: publicprocess@savannahsa.com

savannah environmental

NOTICE OF ENVIRONMENTAL IMPACT ASSESSMENT, BASIC ASSESSMENT & PUBLIC PARTICIPATION PROCESSES FOR THE PROPOSED DEVELOPMENT OF THE GREAT KAROO CLUSTER OF RENEWABLE ENERGY FACILITIES & GRID CONNECTION INFRASTRUCTURE, NEAR RICHMOND, NORTHERN CAPE PROVINCE

Applicant: Great Karoo Renewable Energy (Pty) Ltd.

Proposed Activity: Establishment of three (3) Solar Photovoltaic (PV) Energy Facilities, two (2) Wind Energy Facilities & grid connection infrastructure comprising a 132kV central collector substation & a 132kV power line to enable the connection of five (5) renewable energy facilities to the national grid for the evacuation of the generated electricity. The connection point to the national grid will be the existing Eskom Gamma Substation. Infrastructure associated with each project includes:

Solar Energy Facilities	Wind Energy Facilities	Grid Connection Infrastructure
<ul style="list-style-type: none"> » Solar PV array comprising PV modules & mounting structures. » Inverters & transformers. » Cabling between the panels. » 33/132kV onsite facility substation. » Cabling from the onsite substation to the collector substation (either underground or overhead). » Electrical & auxiliary equipment required at the collector substation that serves that solar energy facility, including switchyard/bay, control building, fences, etc. » Battery Energy Storage System (BESS). » Site offices & maintenance buildings, including workshop areas for maintenance & storage. » Laydown areas. » Access roads & internal distribution roads. 	<ul style="list-style-type: none"> » Wind turbines. » Concrete turbine foundations & turbine hardstands. » Inverters & transformers. » Temporary laydown areas which will accommodate storage & assembly areas. » Cabling between the turbines, to be laid underground where practical. » A temporary concrete batching plant. » 33/132kV onsite facility substation. » Underground cabling from the onsite substation to the collector substation. » Electrical & auxiliary equipment required at the collector substation that serves that wind energy facility, including switchyard/bay, control building, fences, etc. » Battery Energy Storage System (BESS). » Access roads & internal distribution roads. » Site offices & maintenance buildings, including workshop areas for maintenance & storage. 	<ul style="list-style-type: none"> » Central collector substation which consists of: <ul style="list-style-type: none"> * 33/132kV collector substation. * Associated equipment, infrastructure, & buildings. * Temporary & permanent laydown areas. » Distribution Line: <ul style="list-style-type: none"> * A double-circuit 132kV distribution line to connect the central collector 132kV substation to the existing Eskom Gamma Substation will be constructed.

Project Location: The five (5) proposed renewable energy facilities, along with their associated grid connection infrastructure, are located approximately 35km South-West of Richmond along the N1 and approximately 80km South-East of Victoria West along the R63 in the Northern Cape Province, within the Ubuntu Local Municipality, and the Pixley Ka Seme District Municipality. A portion (approximately 2km) of the grid corridor falls within the Beaufort West Local Municipality which forms part of the Central Karoo District Municipality in the Western Cape Province.

Solar Energy Facilities 100MW		Wind Energy Facilities 140MW	
Project	Property	Project	Properties
Nku Solar PV Facility	» Farm Rondavel 85 (Portion 0 & 1)	Angora Wind Energy Facility	» Portion 11 of Farm Gegundefontein 53
Moriri Solar PV Facility			» Portion 0 of Farm Vogelstruisfontein 84
Kwana Solar PV Facility		» Portion 1 of Farm Rondavel 85	
		Merino Wind Energy Facility	» Portion 0 of Farm Rondavel 85
			» Portion 9 of Farm Bult & Rietfontein 96
			» Portion 0 of Farm Vogelstruisfontein 84

Savannah Environmental website: <https://savannahsa.com/public-documents/energy-generation/the-great-karoo-cluster-of-renewable-energy-facilities/>

Collector Electrical Grid Infrastructure (EGI)		
Project	Properties	
Collector EGI (132kV)	<ul style="list-style-type: none"> » Portion 0 of Farm Annex Rondavel 86 » Portion 1 of Farm Uit Vlugt Fontein 265 » Portion 0 of Farm Wynandsfontein 91 » Portion 1 of Farm Wynandsfontein 91 » Portion 3 of Farm Vlekfontein 90 » Portion 0 of Farm Niuewe Fontein 89 » Portion 0 of Farm Burgersfontein 92 	<ul style="list-style-type: none"> » Portion 1 of Farm Nieuwe Fontein 89 » Portion 0 of Farm Rondavel 85 » Portion 1 of Farm Rondavel 85 » Portion 0 of Farm Kleinfontein 93 » Portion 1 of Farm Bult & Rieffontein 96 » Remaining extent of Portion 3 of Farm Schietkuil

Savannah Environmental website: <https://savannahsa.com/public-documents/grid-infrastructure/the-great-karoo-cluster-grid-connection-infrastructure/>

Scoping & Environmental Impact Assessment (S&EIA) & Basic Assessment (BA) Processes: In terms of Sections 24 & 24D of the National Environmental Management Act (No 107 of 1998), as read with Government Notice R324 – R327, as amended, a S&EIA process is required for each renewable energy facility. Similarly, a BA process is required for the grid connection infrastructure. Savannah Environmental is undertaking the required S&EIA, BA, & public participation processes for these projects.

EIA Reports & BA Report available for review & comment: The EIA Reports for the PV facilities and the Merino Wind Farm are available for download, review, & comment on the Savannah Environmental website (see applicable links in tables above). The 30-day review & comment period of the EIA Reports is from **Friday, 13 May 2022** until **Monday, 13 June 2022**. The 30-day review & comment period of the BA Report for the grid connection infrastructure is from **Friday, 20 May 2022** until **Monday, 20 June 2022**. The availability of the EIA Report for the Angora Wind Farm, as well as the 30-day review and comment period will be communicated in due course.

Information Session: Interested and affected parties (I&APs) are invited to attend the Information Session which will take place at Richmond Town Hall on **Thursday, 26 May 2022** at **17h00**. The Information Session will start with a poster display at **17h00** after which those that are interested in attending the presentation can attend the presentation which will start at **17h30**. The Information Session will take place in compliance with the current COVID-19 protocols, and I&APs are therefore required to register their attendance. Please contact Nicolene Venter (details below) to register your attendance.

To obtain further information & register on the project database, please submit your name, contact information & interest in the project to the contact person below.

Nicolene Venter or Nondumiso Bulunga at Savannah Environmental
 P.O. Box 148, Sunninghill, 2157
 Tel: 011 656 3237 / Fax: 086 684 0547
 Mobile: 060 978 8396 (including please call me)
 Email: publicprocess@savannahsa.com
 Website: www.savannahsa.com



SMALLS/GEKLASSIFISEERD

Notice of Births, Marriages, Deaths, Thanks, Wanted, To Let, For Sale, etc. will be grouped as Classified Smalls at a minimum of R45,00 cash for the first 20 words and thereafter 30c per word. Consecutive repeats less 10%. On existing accounts a surcharge of R5,00 extra will be charged. Kennisgewing van Geboortes, Huwelike, Doodsberigte, Dankbetuigings, Benodig, Te Huur, Te Koop, ens, sal groepeer word as Geklassifiseerde Advertisies teen 'n minimum van R45,00 kontant vir die eerste 20 woorde en 30c per woord daarna. Agtereenvolgende herhalings min 10%. Op bestaande rekening sal 'n ekstra R5,00 gehef word.

AMMUNISIE EN VUURWAPENS

JAGGEWERE, teleskope, pistole, rewolwers, ammunisie, toebehore en geweerkluis se beskikbaar by Karel J Kerling Wapen en Ammunisie Handelaars, Hoofstraat 17, Telefoon (053) 631-2422, De Aar. 335 t/c

TO LET

Offices to let: Situated in CBD. Air conditioning, alarm. Contact: 082 784 1972. Kantore te huur: Geleë in sakekern. Lugversorging, alarm. Kontak: 082 784 1972. 127 A12 t/c

FOR SALE

Business for sale: Le Chanz Materials & Wool, De Aar. Established and profitable business of 21 years, with large client base in die area as ongoing concern. Contact: Hennie 083 390 2633. 99 ESW M13 t/c

GESONDHEID EN MEDISYNE

HOMEOPATIESE en Gesondheidsmiddels. Selfgenesing tuis. Gratis advies. De Aar Apteek, Hoofstraat 17, Telefoon (053) 631-2422, De Aar. 323 M9 t/c

ATTENTION

Cars/Bakkies/Scooters: Wanted in any condition. Honest reliable service. 082 722 6183. C217 N26-M22

AANDAG

BENODIG u 'n fotograaf? Ek kan u help met kinderpartytjies, verjaarsdae, verlovings, troues, jaareinde funksies of enige geleentheid waar 'n fotograaf benodig word teen bestekbare pryse. Kontak gerus Jacqueline Goss op 076 813 9136. De Aar. 000 N16 t/c

Britanniabaai (Weskus): Vroulike penoeneris soek dame/man, 57-75 om luukse strandhuis te deel. Private ingang. Geen kansvatters. R5 000,00pm + deposito. Eienaar 082 545 9884. T050622A M13

De Aar Bande en Gas: Nuwe SABS goedgekeurde bande en motorfiets binne- en buitebande, asook huishoudelike gas, olies, motorskoonmaakmiddels en Cadac-produkte. Skakel (053) 631-3411 of (053) 631-2712, Jennystraat 3, De Aar. 88 J31 t/c

De Aar Glassworks: Glaswerk kontrakteurs vir tafelblaaie, spieëls, alle motorwindskerms, patio- en stortdeure, asook vervanging van stukke ruite — ook by u huis. Raming van foto's, skilderye, ens. Skakel (053) 631-3411 of (053) 631-2712, Jennystraat 3, De Aar. 89 J31 t/c

JACK OF ALL TRADES: Vir alle bouwerk, aanbouings, loodgieter waterdigting, verstopte pype, verf, teel en staalwerke. Jy noem dit ek doen dit. Omliggende dorpe word ook bedien. Kontak Sakkie op 082 570 1881 of telfaks: (053) 631-0192, De Aar. 1256 O24, O31 t/c

JACK VERVOER: Vervoer van stene, sand, klip vir bouwerke, vervoer ook bourommel en tuinvullis. Kontak Sakkie op 082 570 1881, De Aar. 734 M23 t/c

KAROO Verkoeling, herstel yskaste, vrieskaste, lugversorgers, oprig van koelkamers, vrieskamers. Diens van lugversorgers. Kontak André (053) 631-4500 of 083 269 5970, De Aar. 1477 N16 t/c

Gedruk en uitgegee deur De Aar Drukkers BK Millerstraat 12, De Aar Telefoon (053) 631-2851

NOTICE

LOST OR DESTROYED DEED

Notice is hereby given in terms of Regulation 68 of the Deeds Registries Act, 1937, of the intention to apply for the issue of a certified copy of **DEED OF TRANSFER No. T73309/1993**.

Passed by **BROER LOOCK** in favour of **GEORGE LOUIS STEYTLER**. In respect of certain THE REMAINDER OF THE FARM DWARLWINDSPOORT, No. 32, SITUATED IN THE RENOSTERBERG MUNICIPALITY, DIVISION PHILIPSTOWN, NORTHERN CAPE PROVINCE. IN EXTENT 3223,9637 (THREE TWO TWO THREE COMMA NINE SIX THREE SEVEN) Hectares.

Which has been lost or destroyed. All interested persons having objection to the issue of such copy are hereby required to lodge the same in writing with the Registrar of Deeds, MAGISTRATE'S COURT BUILDING, 10th floor, c/o STEAD AND KNIGHT STREET, PRIVATE BAG X5026, KIMBERLEY, or Unita.Frazenburg@drdlr.gov.za within two weeks from the date of publication of this notice.

Dated at DE AAR this 4th day of May 2022.

JOSEPH & VAN RENSBURG ATTORNEYS (Applicant)

41 Church Street DE AAR 7000 E-mail: joren2@adsactive.com Contact No: (053) 631-2163 Reference No: HvZ/hf/TH0820 149 M13

NOTICE

LOST OR DESTROYED DEED

Notice is hereby given in terms of Regulation 68 of the Deeds Registries Act, 1937, of the intention to apply for the issue of a certified copy of **Deed of Transfer No. T64214/1996** passed by **JOSEPH MARKUS FOURIE (ID No. 110319 5011 003)** in favour of **CHRISTOPHER JAMES FERREIRA (ID No. 500809 5050 082)** AND **MARIANNE FERREIRA (ID No. 660311 0139 081)** in respect of certain:

1. ERF 576 PHILIPSTOWN, SITUATE IN THE RENOSTERBERG MUNICIPALITY, DIVISION PHILIPSTOWN, NORTHERN CAPE PROVINCE.
2. ERF 490 PHILIPSTOWN, SITUATE IN THE RENOSTERBERG MUNICIPALITY, DIVISION PHILIPSTOWN, NORTHERN CAPE PROVINCE.

Which has been lost or destroyed. All interested persons having objection to the issue of such copy are hereby required to lodge the same in writing with the Registrar of Deeds at **KIMBERLEY** within two weeks from date of the publication of this notice.

Dated at Pretoria on this 6th May 2022.

ELKE DE KLERK ATTORNEYS (Applicant)

1018 Saxby Avenue Eldoraigne Centurion elkedeclerk@jafica.com Tel: (012) 654-1438 T051022B M13

NOTICE OF ENVIRONMENTAL IMPACT ASSESSMENT, BASIC ASSESSMENT & PUBLIC PARTICIPATION PROCESSES FOR THE PROPOSED DEVELOPMENT OF THE GREAT KAROO CLUSTER OF RENEWABLE ENERGY FACILITIES & GRID CONNECTION INFRASTRUCTURE, NEAR RICHMOND, NORTHERN CAPE PROVINCE

Applicant: Great Karoo Renewable Energy (Pty) Ltd.
Proposed Activity: Establishment of three (3) Solar Photovoltaic (PV) Energy Facilities, two (2) Wind Energy Facilities & grid connection infrastructure comprising a 132kV central collector substation & a 132kV power line to enable the connection of five (5) renewable energy facilities to the national grid for the evacuation of the generated electricity. The connection point to the national grid will be the existing Eskom Gamma Substation. Infrastructure associated with each project includes:

Solar Energy Facilities	Wind Energy Facilities	Grid Connection Infrastructure
<ul style="list-style-type: none"> Solar PV array comprising PV modules & mounting structures. Inverters & transformers. Cabling between the panels. 33/132kV on-site facility substation. Cabling from the on-site substation to the collector substation (either underground or overhead). Electrical & auxiliary equipment required at the collector substation that serves that solar energy facility, including switchyard/bay, control building, fences, etc. Battery Energy Storage System (BESS). Site offices & maintenance buildings, including workshop areas for maintenance & storage. Laydown areas. Access roads & internal distribution roads. 	<ul style="list-style-type: none"> Wind turbines. Concrete turbine foundations & turbine hardstands. Inverters & transformers. Temporary laydown areas which will accommodate storage & assembly areas. Cabling between the turbines, to be laid underground where practical. A temporary concrete batching plant. 33/132kV on-site facility substation. Underground cabling from the on-site substation to the collector substation. Electrical & auxiliary equipment required at the collector substation that serves that wind energy facility, including switchyard/bay, control building, fences, etc. Battery Energy Storage System (BESS). Access roads & internal distribution roads. Site offices & maintenance buildings, including workshop areas for maintenance & storage. 	<ul style="list-style-type: none"> Central collector substation which consists of: <ul style="list-style-type: none"> 33/132kV collector substation. Associated equipment, infrastructure, & buildings. Temporary & permanent laydown areas. Distribution Line: <ul style="list-style-type: none"> A double-circuit 132kV distribution line to connect the central collector 132kV substation to the existing Eskom Gamma Substation will be constructed.

Project Location: The five (5) proposed renewable energy facilities, along with their associated grid connection infrastructure, are located approximately 35km South-West of Richmond along the N1 and approximately 80km South-East of Victoria West along the R63 in the Northern Cape Province, within the Uburu Local Municipality, and the Pizey Ka Seme District Municipality. A portion (approximately 2km) of the grid corridor falls within the Beaufort West Local Municipality which forms part of the Central Karoo District Municipality in the Western Cape Province.

Solar Energy Facilities 100MW		Wind Energy Facilities 140MW	
Project	Property	Project	Properties
Nku Solar PV Facility		Angara Wind Energy Facility	<ul style="list-style-type: none"> Portion 11 of Farm Gegundfontein 53 Portion 0 of Farm Vogelstusfontein 84 Portion 1 of Farm Rondavel 85 Portion 0 of Farm Rondavel 85
Moril Solar PV Facility	<ul style="list-style-type: none"> Farm Rondavel 85 (Portion 0 & 1) 	Merino Wind Energy Facility	<ul style="list-style-type: none"> Portion 1 of Farm Rondavel 85 Portion 0 of Farm Rondavel 85 Portion 9 of Farm Bult & Rietfontein 96 Portion 0 of Farm Vogelstusfontein 84
Kwano Solar PV Facility			

Collector Electrical Grid Infrastructure (EGI)	
Project	Properties
Collector EGI (132kV)	<ul style="list-style-type: none"> Portion 0 of Farm Annex Rondavel 86 Portion 1 of Farm Uit Vuig Fontein 265 Portion 0 of Farm Wymandfontein 91 Portion 1 of Farm Wymandfontein 91 Portion 3 of Farm Veldfontein 90 Portion 0 of Farm Nieuwe Fontein 89 Portion 0 of Farm Burgerfontein 92 Portion 1 of Farm Nieuwe Fontein 89 Portion 0 of Farm Rondavel 85 Portion 1 of Farm Kleinfontein 93 Portion 1 of Farm Bult & Rietfontein 96 Remaining extent of Portion 3 of Farm Schietkuil

Scoping & Environmental Impact Assessment (S&EIA) & Basic Assessment (BA) Processes: In terms of Sections 24 & 24D of the National Environmental Management Act (No 107 of 1998), as read with Government Notice R324 - R327, as amended, a S&EIA process is required for each renewable energy facility. Similarly, a BA process is required for the grid connection infrastructure. Savannah Environmental is undertaking the required S&EIA, BA, & public participation processes for these projects.

EIA Reports & BA Report available for review & comment: The EIA Reports for the PV facilities and the Merino Wind Farm are available for download, review, & comment on the Savannah Environmental website (see applicable links in tables above). The 30-day review & comment period of the EIA Reports is from **Friday, 13 May 2022 until Monday, 13 June 2022**. The 30-day review & comment period of the BA Report for the grid connection infrastructure is from **Friday, 20 May 2022 until Monday, 20 June 2022**. The availability of the BA Report for the Angara Wind Farm, as well as the 30-day review and comment period will be communicated in due course.

Information Session: Interested and affected parties (I&APs) are invited to attend the Information Session which will take place at Richmond Town Hall on **Thursday, 26 May 2022 at 17h00**. The Information Session will start with a poster display at 17h00 after which those that are interested in attending the presentation can attend the presentation which will start at 17h30. The Information Session will take place in compliance with the current COVID-19 protocols, and I&APs are therefore required to register their attendance. Please contact Nicolelene Venter (details below) to register your attendance.

To obtain further information & register on the project database, please submit your name, contact information & interest in the project to the contact person below.

Nicolelene Venter of Savannah Environmental
P.O. Box 148, Sunningdale, 2157
Tel: 011 656 3237 // Fax: 086 484 0547
Mobile: 040 978 8396 (including please call me)
Email: publicprocess@savannahsa.com
Website: www.savannahsa.com





NOVEL SHOE STORE & OUTFITTERS

De Aar's Leading Shoe Store for over 80 years!
Now also De Aar's Leading Fashion Outfitter!

OUR MODERN INTERIOR MAKES SHOPPING A PLEASURE FOR THE WHOLE FAMILY

23 MAIN STREET, DE AAR
Tel: (053) 631-2611 — E-Mail: novels@shisas.com

Kennisgewing BOEDEL

In die boedel van wyle **PIETER KROUTZ (ID Nr. 580602 5039 087)** van Visserstraat 58, DE AAR 7000.

Boedel Nr. 1274/2020.

Die Eerste en Finale Likwidasië- en Distribusierekening in die bogenoemde boedel sal ten kantore van die Meester van die Hooggeregshof, KIMBERLEY, en die Landdros, DE AAR, ter insae lê vir 'n tydperk van 21 dae vanaf 13 Mei 2022.

JOSEPH & VAN RENSBURG PROKUREURS (Eksekuteur)

Kerkstraat 41 DE AAR 7000

Verwysing: HvZ/BH0080 Tel: (053) 631-2163 Faks: (053) 631-2703 150 M13

Oomblik van Stilte

VERSUIMDE PLIG

Mev SM Laubscher †

VIR meer as twaalf jaar het 'n egpaar elke aand na 'n begraafplaas gegaan om 'n lantern op die graf van hul enigste seun op te steek.

Op 'n vraag waarom hulle dit doen, was die antwoord: "Sodat hy nooit in die donker moet wees nie."

Ons bewonder die liefde van hierdie hartseer ouers, maar ons weet dit was tevergeefs. Hoeveel belangeriker was dit om hierdie seun na die ewige "lig" Jesus Christus te bring terwyl hy nog geleef het.

Hoe dikwels versuim ons nie ons belangrikste plig teenoor ons kinders, familie en vriende nie. Hoeveel miljoene siele sit in duisternis omdat hulle nog nooit die lig van die evangelie gesien en daarvan gehoor het nie.

Johannes Calvyn het gesê: "Die regte gebruik van al die genadegawes van God, is om dit vrylik en liefdevol met ander te deel. In Eseg 3 vers 17 lees ons wat ons plig teenoor ander is wat ons nie mag versuim nie: "Mensekind, Ek het jou as wag aangestel, jy moet hulle van My kant waarsku. As Ek aan die goddelose sê: "Jy sal sterwe — en jy waarsku hom nie, sal jy, die goddelose deur sy onge-regtigheid sterwe, maar sy bloed sal ek van jou hand eis."

Ons lees van Job, hy was 'n bekommerde man, al het hy sy kinders hoe goed ook opgevoed.


Hy het die versoekings in die lewe geken en ons lees: "Vroeg in die môre het hy vir hulle almal 'n brandoffer gebring, want", het Job gesê: "Miskien het my kinders gesondig en God in hulle gedagtes gevloek." (Job 1 vers 5).

Elke ouer se hartsbegeerte is dat jou seun of dogter 'n rein lewe sal lei en dat hy God sal dien. "Ek bid nie dat U hulle uit die wêreld moet wegneem nie, maar dat U hulle van die Bose moet bewaar (Joh 17 vers 15). In die Engelse Bybel word Bose vertaal met "The Evil one".

In Matt 6 vers 23 lees ons: "as die lig in jou donker is, hoe donker moet dit dan nie wees nie." In Engels lees ons: "If your eye is pure, there will be sunshine in your soul. But if your eye is clouded with evil thoughts and desires, you are in deep spiritual darkness. And oh, how deep that darkness can be." (The Living Bible).

As jou kind of dierbare so sterf met donkerheid in sy siele, sal 'n lamp op sy graf nie help nie, dit is te laat.

Skenk BLOED en red 'n LEWE!



DE AAR DRUKKERS

POSBUS 44, DE AAR Telefoon (053) 631-2851

VIR SPOEDIGE DRUKWERK VAN HOË GEHALTE

MIDLAND NUUS

POSBUS 224, CRADOCK TELEFOON (048) 881-5330

Skenk BLOED en red 'n LEWE!



Site Notices

The details for the respective projects are as follows:

Project Name	Generating capacity	Farm Name and No.	Portion No.
Nku Solar PV Facility	100MW	Rondavel 85	0 & 1
Moriri Solar PV Facility	100MW	Rondavel 85	0 & 1
Kwana Solar PV Facility	100MW	Rondavel 85	0 & 1
Angora Wind Energy Facility	140MW	Gegundefontein 53	11
		Vogelstruisfontein 84	0
		Rondavel 85	0 & 1
Merino Wind Energy Facility	140MW	Rondavel 85	0 & 1
		Bult & Rietfontein 96	9
		Vogelstruisfontein 84	0

Electrical Grid Infrastructure (EGI)	Capacity	Farm Name and Portion	Infrastructure components
Collector EGI	132kV	<ul style="list-style-type: none"> » Portion 0 of Farm Annex Rondavel 86 » Portion 1 of Farm Annex Rondavel 86 » Portion 1 of Farm Uit Vlucht Fontein 265 » Portion 0 of Farm Wynandsfontein 91 » Portion 1 of Farm Wynandsfontein 91 » Portion 3 of Farm Vlekfontein 90 » Portion 0 of Farm Burgersfontein 92 » Portion 1 of Farm Nieuwe Fontein 89 » Portion 0 of Farm Rondavel 85 » Portion 1 of Farm Rondavel 85 » Portion 0 of Farm Kleinfontein 93 » Portion 8 of Farm Jan Booyens Onder Plaats 94 » Portion 1 of Farm Bult & Rietfontein 96 » Remaining extent of Farm 3 	<ul style="list-style-type: none"> » 132kV collector substation and associated 132kV power line

Applications for Environmental Authorisation: Each renewable energy facility will be constructed as a separate stand-alone project and therefore, separate Scoping and Environmental Impact Assessment (S&EIA) processes will be undertaken for each facility. Similarly, the grid connection solution will be subjected to a separate Basic Assessment (BA) process which will consider feasible alternatives for the power line corridors. Each respective renewable facility project and the grid connection infrastructure require applications for Environmental Authorisation (EA) in terms of the National Environmental Management Act (No. 107 of 1998) (NEMA) and 2014 EIA Regulations (GNR 326), which are required to be supported by S&EIA processes for each renewable energy facility and a BA process for the grid connection infrastructure.

Public Participation Process: Savannah Environmental (Pty) Ltd has been appointed as the environmental consultant responsible for undertaking the respective S&EIA, BA and Public Participation processes in support of the applications for EA. Due to the proximity of the renewable energy facilities and grid connection solution to one another, the EIA processes and public participation processes for the projects will be undertaken concurrently, providing the public with an opportunity to understand the full extent of the development proposed and comment on each of the projects. **To obtain further information on the projects and to register on the project databases, please submit your name, contact information and interest in the project, in writing, to:**

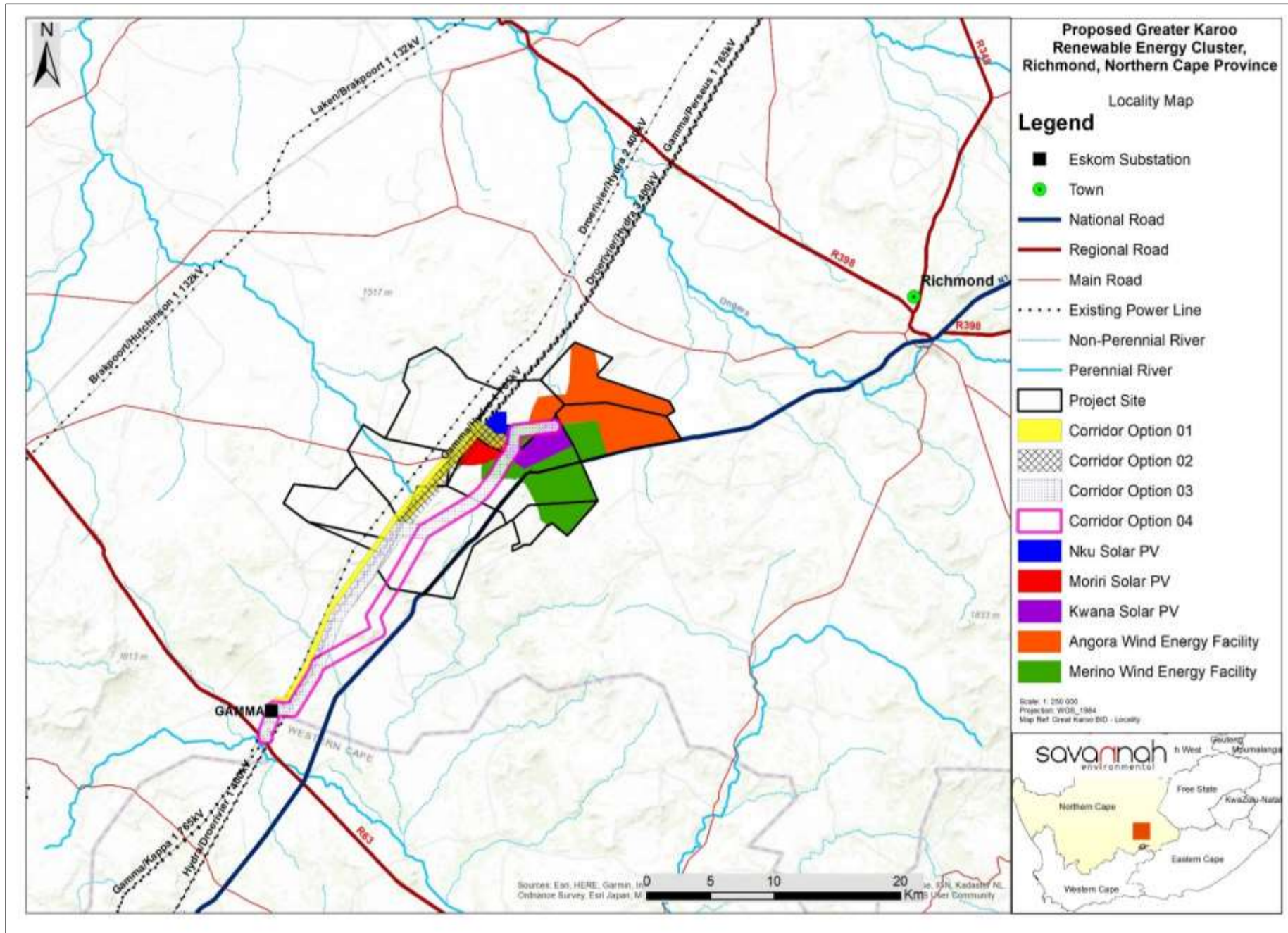
Nicolene Venter at Savannah Environmental
P.O. Box 148, Sunninghill, 2157
Tel: 011 656 3237
Fax: 086 684 0547
Email: publicprocess@savannahsa.com
Website: www.savannahsa.com



KENNISGEWING VAN OMGEWINGSIMPAKEVALUERING, BASIESE EVALUERING EN OPENBARE DEELNAMEPROSESSE VIR DIE BEOOGDE ONTWIKKELING VAN DIE GROOT KAROO GROEP HERNUBARE KRAGAAANLEGTE EN ROOSTERKONNEKSIE-INFRASTRUKTUUR NABY RICHMOND, NOORD-KAAPROVINSIE

Applikant: Great Karoo Renewable Energy (Edms.) Bpk.

Beoogde aktiwiteit: Great Karoo Renewable Energy (Edms.) Bpk. beoog die ontwikkeling van 'n groep hernubare kragaanlegte en verwante infrastruktuur, met insluiting van Elektriese Kragnetinfrastruktuur (EKI), ~ 35 km suidwes van die dorp Richmond met die N1 langs en 80 km suidoos van Victoria-Wes met die R63 langs in die Noord-Kaaprovinsie. Die groep bestaan uit drie (3) fotovoltaïese (FV) sonkragaanlegte van 100 MW en twee (2) windkragaanlegte van 140 MW. Die roosterkonneksie-infrastruktuur vir al die projekte sal 'n sentrale kollektorsubstasie van 132 kV en 'n dubbelkring kraglyn van 132 kV tot by Eskom se bestaande Gamma-substasie insluit.



Infrastruktuur wat met elk van die FV-sonkragaanlegte verband hou, sal insluit:

- » FV-sonkragreeks bestaande uit FV-modules en monteerstrukture;
- » wisselrigters en transformators;
- » kables tussen die panele;
- » 33/132 kV interne aanlegsubstasie;
- » kables van die interne substasie af tot by die kollektorsubstasie (hetsy ondergronds of oorhoofs);
- » elektriese en hulptoerusting wat by die kollektorsubstasie benodig word wat daardie sonkragaanleg bedien, met insluiting van 'n skakelwerf/-vak, beheergebou, heidings, ens.
- » 'n batterykragbergingstelsel (BESS);
- » terreinkantore en instandhoudingsgeboue, met insluiting van werkswinkelgebiede vir instandhouding en berging;
- » stapelwerwe; en
- » toegangspaaie en interne distribusiepaaië.

Infrastruktuur wat met elke Windkragaanleg verband hou, sal insluit:

- » windturbines;
- » betonfondasies en vaste blaaië vir turbines;
- » wisselrigters en transformators;
- » tydelike stapelwerwe wat die bergings- en monteergebiede sal huisves;
- » kables tussen die turbines, wat ondergronds gelê moet word waar dit prakties moontlik is;
- » 'n tydelike beton lotaanleg;
- » 33/132 kV interne aanlegsubstasie;
- » ondergrondse kables van die interne substasie af tot by die kollektorsubstasie;
- » elektriese en hulptoerusting wat by die kollektorsubstasie benodig word wat daardie windkragaanleg bedien, met insluiting van 'n skakelwerf/-vak, beheergebou, heidings, ens.
- » 'n batterykragbergingstelsel (BESS);
- » toegangspaaie en interne distribusiepaaië;
- » terreinkantore en instandhoudingsgeboue, met insluiting van werkswinkelgebiede vir instandhouding en berging.

Die roosterkonneksie-infrastruktuur vir alle projekte sal insluit:

- » Sentrale kollektorsubstasie bestaande uit:
 - 33/132 kV kollektorsubstasie;
 - verwante toerusting, infrastruktuur en geboue;
 - tydelike en permanente stapelwerfgebiede;
- » Distribusielyn:
 - * 'n Dubbelkring 132 kV distribusielyn sal opgerig word om die sentrale 132 kV distribusie-substasie met Eskom se bestaande Gamma-substasie te verbind.

Die besonderhede vir die onderskeie projekte is soos volg:

Projeknaam	Opwekkingsvermoë	Plaasnaam en -no.	Gedeelfeno.
Nku FV-sonkragaanleg	100 MW	Rondavel 85	0 & 1
Moriri FV-sonkragaanleg	100 MW	Rondavel 85	0 & 1
Kwana FV-sonkragaanleg	100 MW	Rondavel 85	0 & 1
Angora Windkragaanleg	140 MW	Gegundefontein 53	11
		Vogelstruisfontein 84	0
		Rondavel 85	0 & 1
Merino Windkragaanleg	140 MW	Rondavel 85	0 & 1
		Bult & Rietfontein 96	9
		Vogelstruisfontein 84	0

Elektriese kragetinfrastruktuur (EKI)	Vermoë	Plaasnaam en -gedeelte	Infrastruktuurkomponente
Kollektor-EKI	132 kV	<ul style="list-style-type: none"> » Gedeelte 0 van die plaas Annex Rondavel 86 » Gedeelte 1 van die plaas Annex Rondavel 86 » Gedeelte 1 van die plaas Uit Vlucht Fontein 265 » Gedeelte 0 van die plaas Wynandsfontein 91 » Gedeelte 1 van die plaas Wynandsfontein 91 » Gedeelte 3 van die plaas Vlekfontein 90 » Gedeelte 0 van die plaas Burgersfontein 92 » Gedeelte 1 van die plaas Nieuwe Fontein 89 » Gedeelte 0 van die plaas Rondavel 85 » Gedeelte 1 van die plaas Rondavel 85 » Gedeelte 0 van die plaas Kleinfontein 93 » Gedeelte 8 van die plaas Jan Booyens Onder Plaats 94 » Gedeelte 1 van die plaas Bult & Rietfontein 96 » Restant van Plaas 3 	<ul style="list-style-type: none"> » 132 kV kollektorsubstasie en verwante 132 kV kraglyn

Aansoeke om Omgewingsmagtiging: Elke hernubare kragaanleg sal as 'n aparte losstaande projek opgerig word, gevolglik sal aparte Bestekopname- en Omgewingsimpakevalueringprosesse (B- & OIE-prosesse) vir elke aanleg onderneem word. Eweneens sal die roosterkonneksie-oplossing onderwerp word aan 'n aparte Basiese Evalueringproses (BE-proses), wat oorweging aan bedryfbare alternatiewe vir die kraglynkorridors sal skenk. Elke onderskeie hernubare aanlegprojek en die roosterkonneksie-infrastruktuur vereis aansoeke om Omgewingsmagtiging (OM) ingevolge die Nasionale Wet op Omgewingsbestuur (Wet 107 van 1998) (NEMA) en die 2014 OIE-regulasies (Staatskennisgewing R326), wat deur B&OIE-prosesse vir elke hernubare kragaanleg en 'n BE-proses vir die roosterkonneksie-infrastruktuur ondersteun moet word.

Openbare Deelnameprosesse: Savannah Environmental (Edms.) Bpk. is aangestel as die omgewingskonsultant wat verantwoordelik is om die onderskeie B&OIE-, BE- en Openbare Deelnameprosesse ter staving van die aansoeke om OM te onderneem. Weens die nabyheid van die hernubare kragaanlegte en die kragnetkonneksie-oplossings aan mekaar, sal die OIE-prosesse en openbare deelnameprosesse vir die projekte gelyklopend onderneem word, wat die publiek 'n geleentheid sal bied om die volle omvang van die beoogde ontwikkelings te verstaan en op elkeen van die projekte kommentaar te lewer. **Om meer inligting te bekom en om op die projekte se databasisse te registreer, verstrek asseblief u naam, kontakbesonderhede en belang by die projek skriftelik aan:**

Nicolene Venter by Savannah Environmental
 Posbus 148, Sunninghill, 2157
 Tel: 011 656 3237
 Faks: 086 684 0547
 E-pos: publicprocess@savannahsa.com
 Webwerf: www.savannahsa.com



PROOF OF SITE NOTICES (Date placed: Wednesday, 29 and Thursday, 30 September 2021)

SITE NOTICE 1



SITE NOTICE 2



SITE NOTICE 3



SITE NOTICE 4



SITE NOTICE 5



SITE NOTICE 6



29 Sep 2021 15:52:34
-31°39'44,921"S 23°28'2,946"E
N1



29 Sep 2021 15:52:43
-31°39'44,942"S 23°28'3,017"E
N1

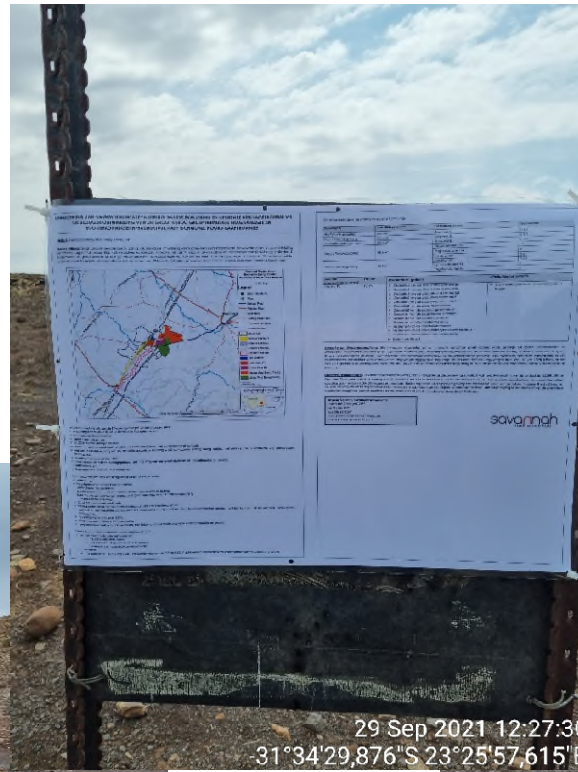


29 Sep 2021 15:52:50
-31°39'44,952"S 23°28'3,021"E
N1

SN7 (Entrance to Gamma Substation)



SITE NOTICE 8



SITE NOTICE 9



29 Sep 2021 11:16:22
-31°29'48,13"S 23°27'51,214"E



29 Sep 2021 11:16:28
-31°29'48,129"S 23°27'51,178"E



29 Sep 2021 11:16:12
-31°29'48,098"S 23°27'51,432"E

SITE NOTICE 10



SITE NOTICE 11



29 Sep 2021 10:47:55
-31°29'51,938"S 23°33'30,588"E



29 Sep 2021 10:48:25
-31°29'51,782"S 23°33'30,671"E



29 Sep 2021 10:48:08
-31°29'51,927"S 23°33'30,525"E

SITE NOTICE 12





SITE NOTICE 13

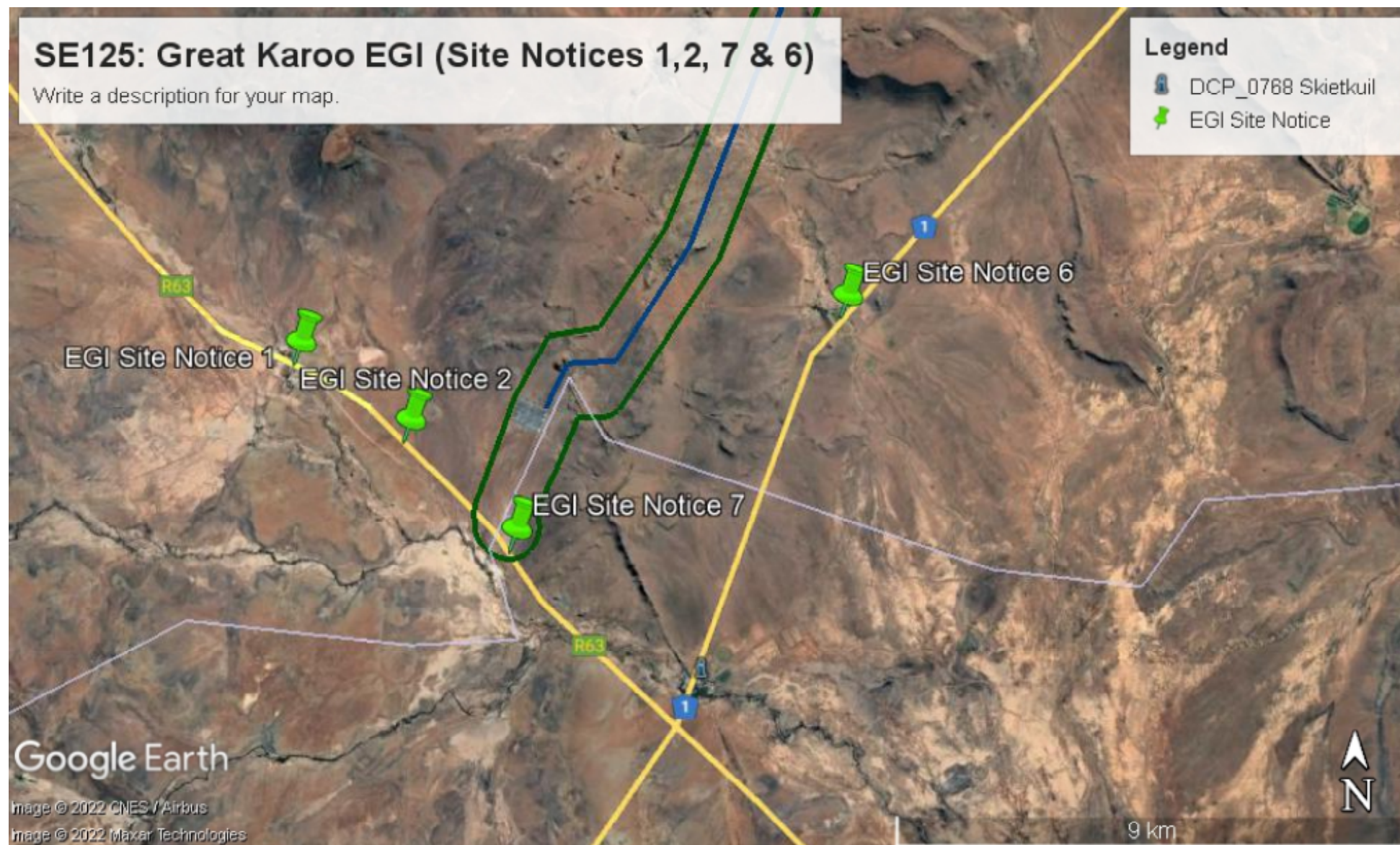


SE125: Great Karoo EGI (Site Notices 1, 2, 7 & 6)

Write a description for your map.

Legend

-  DCP_0768 Skietkuil
-  EGI Site Notice



Google Earth

Image © 2022 CNES / Airbus

Image © 2022 Maxar Technologies

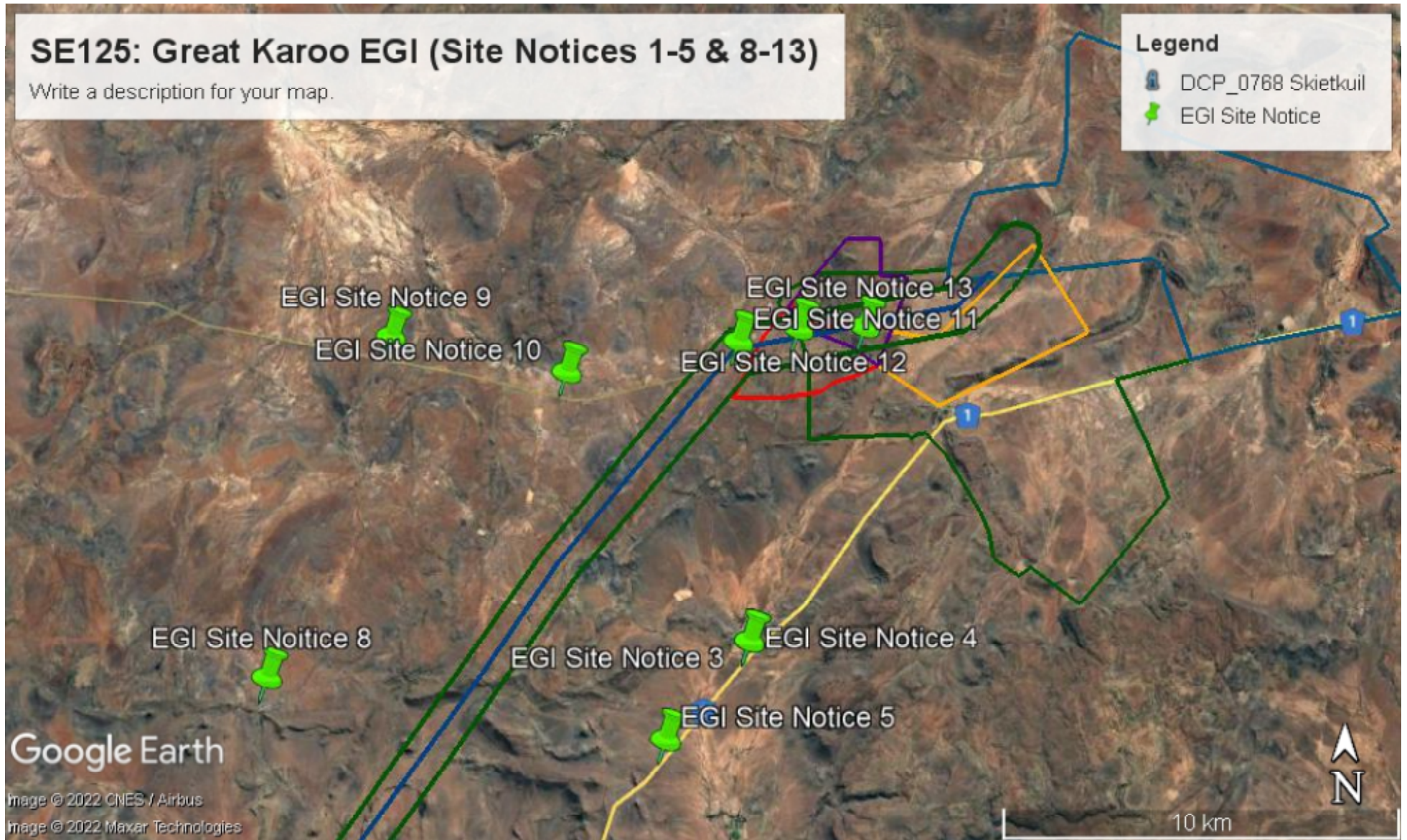
9 km

SE125: Great Karoo EGI (Site Notices 1-5 & 8-13)

Write a description for your map.

Legend

- DCP_0768 Skietkuil
- EGI Site Notice



Google Earth

Image © 2022 CNES / Airbus

Image © 2022 Maxar Technologies

10 km

Process Notices

NOTICE OF ENVIRONMENTAL IMPACT ASSESSMENT, BASIC ASSESSMENT AND PUBLIC PARTICIPATION PROCESSES FOR THE PROPOSED DEVELOPMENT OF THE GREAT KAROO CLUSTER OF RENEWABLE ENERGY FACILITIES AND GRID CONNECTION INFRASTRUCTURE, NEAR RICHMOND, NORTHERN CAPE PROVINCE

Applicant: Great Karoo Renewable Energy (Pty) Ltd.

Proposed Activity: Great Karoo Renewable Energy (Pty) Ltd proposes the development of a cluster of renewable energy facilities and associated infrastructure, including Electrical Grid Infrastructure (EGI), ~35km South-West of the town of Richmond along the N1 and 80km South-East of Victoria West along the R63 in the Northern Cape Province. The cluster consists of three (3) 100MW solar photovoltaic (PV) energy facilities, and two (2) 140MW energy facilities. The grid connection infrastructure for all projects will include one central collector 132kV substation and a double circuit 132kV power line to the existing Eskom Gamma Substation.

Infrastructure associated with each Solar PV Facility will include:

- » Solar PV array comprising PV modules and mounting structures.
- » Inverters and transformers.
- » Cabling between the panels.
- » 33/132kV onsite facility substation.
- » Cabling from the onsite substation to the collector substation (either underground or overhead).
- » Electrical and auxiliary equipment required at the collector substation that serves that solar energy facility, including switchyard/bay, control building, fences etc.
- » Battery Energy Storage System (BESS).
- » Site offices and maintenance buildings, including workshop areas for maintenance and storage.
- » Laydown areas.
- » Access roads and internal distribution roads.

Infrastructure associated with each Wind Energy Facility will include:

- » Wind turbines
- » Concrete turbine foundations and turbine hardstands.
- » Inverters and transformers.
- » Temporary laydown areas which will accommodate storage and assembly areas.
- » Cabling between the turbines, to be laid underground where practical.
- » A temporary concrete batching plant.
- » 33/132kV onsite facility substation.
- » Underground cabling from the onsite substation to the collector substation.
- » Electrical and auxiliary equipment required at the collector substation that serves that wind energy facility, including switchyard/bay, control building, fences etc.
- » Battery Energy Storage System (BESS).
- » Access roads and internal distribution roads.
- » Site offices and maintenance buildings, including workshop areas for maintenance and storage.

The grid connection infrastructure for all projects will include:

- » Central collector substation which consists of:
 - 33/132kV collector substation.
 - Associated equipment, infrastructure and buildings.
 - Temporary and permanent laydown areas.
- » Distribution Line:
 - * A double-circuit 132kV distribution line to connect the central collector 132kV substation to the existing Eskom Gamma Substation will be constructed.

The details for the respective projects are as follows:

Project Name	Generating capacity	Farm Name and No.	Portion No.
Nku Solar PV Facility	100MW	Rondavel 85	0 & 1
Moriri Solar PV Facility	100MW	Rondavel 85	0 & 1
Kwana Solar PV Facility	100MW	Rondavel 85	0 & 1
Angora Wind Energy Facility	140MW	Gegundefontein 53	11
		Vogelstruisfontein 84	0
		Rondavel 85	0 & 1
Merino Wind Energy Facility	140MW	Rondavel 85	0 & 1
		Bult & Rietfontein 96	9
		Vogelstruisfontein 84	0

Electrical Grid Infrastructure (EGI)	Capacity	Farm Name and Portion	Infrastructure components
Collector EGI	132kV	<ul style="list-style-type: none"> » Portion 0 of Farm Annex Rondavel 86 » Portion 1 of Farm Annex Rondavel 86 » Portion 1 of Farm Uit Vlucht Fontein 265 » Portion 0 of Farm Wynandsfontein 91 » Portion 1 of Farm Wynandsfontein 91 » Portion 3 of Farm Vlekkfontein 90 » Portion 0 of Farm Burgersfontein 92 » Portion 1 of Farm Nieuwe Fontein 89 » Portion 0 of Farm Rondavel 85 » Portion 1 of Farm Rondavel 85 » Portion 0 of Farm Kleinfontein 93 » Portion 8 of Farm Jan Booysens Onder Plaats 94 » Portion 1 of Farm Bult & Rietfontein 96 » Remaining extent of Farm 3 	<ul style="list-style-type: none"> » 132kV collector substation and associated 132kV power line

Applications for Environmental Authorisation: Each renewable energy facility will be constructed as a separate stand-alone project and therefore, separate Scoping and Environmental Impact Assessment (S&EIA) processes will be undertaken for each facility. Similarly, the grid connection solution will be subjected to a separate Basic Assessment (BA) process which will consider feasible alternatives for the power line corridors. Each respective renewable facility project and the grid connection infrastructure require applications for Environmental Authorisation (EA) in terms of the National Environmental Management Act (No. 107 of 1998) (NEMA) and 2014 EIA Regulations (GNR 326), which are required to be supported by S&EIA processes for each renewable energy facility and a BA process for the grid connection infrastructure.

Public Participation Process: Savannah Environmental (Pty) Ltd has been appointed as the environmental consultant responsible for undertaking the respective S&EIA, BA and Public Participation processes in support of the applications for EA. Due to the proximity of the renewable energy facilities and grid connection solution to one another, the EIA processes and public participation processes for the projects will be undertaken concurrently, providing the public with an opportunity to understand the full extent of the development proposed and comment on each of the projects. **To obtain further information on the projects and to register on the project databases, please submit your name, contact information and interest in the project, in writing, to:**

Nicolene Venter at Savannah Environmental
 P.O. Box 148, Sunninghill, 2157
 Email: publicprocess@savannahsa.com
 Tel: 011 656 3237 / Fax: 086 684 0547
 Website: www.savannahsa.com



KENNISGEWING VAN OMGEWINGSIMPAKEVALUERING, BASIESE EVALUERING EN OPENBARE DEELNAMEPROSESSE VIR DIE BEOOGDE ONTWIKKELING VAN DIE GROOT KAROO GROEP HERNUBARE KRAGANLEGTE EN ROOSTERKONNEKSIE-INFRASTRUKTUUR NABY RICHMOND, NOORD-KAAPROVINSIE

Applikant: Great Karoo Renewable Energy (Edms.) Bpk.

Beoogde aktiwiteit: Great Karoo Renewable Energy (Edms.) Bpk. beoog die ontwikkeling van 'n groep hernubare kragaanlegte en verwante infrastruktuur, met insluiting van Elektriese Kragnetinfrastruktuur (EKI), ~ 35 km suidwes van die dorp Richmond met die N1 langs en 80 km suidoos van Victoria-Wes met die R63 langs in die Noord-Kaapprovinsie. Die groep bestaan uit drie (3) fotovoltaïese (FV) sonkragaanlegte van 100 MW en twee (2) windkragaanlegte van 140 MW. Die roosterkonneksie-infrastruktuur vir al die projekte sal 'n sentrale kollektorsubstasie van 132 kV en 'n dubbelkring kraglyn van 132 kV tot by Eskom se bestaande Gamma-substasie insluit.

Infrastruktuur wat met elk van die FV-sonkragaanlegte verband hou, sal insluit:

- » FV-sonkragreeks bestaande uit FV-modules en monteerstrukture;
- » wisselrigters en transformators;
- » kables tussen die panele;
- » 33/132 kV interne aanlegsubstasie;
- » kables van die interne substasie af tot by die kollektorsubstasie (hetsy ondergronds of oorhoofs);
- » elektriese en hulptoerusting wat by die kollektorsubstasie benodig word wat daardie sonkragaanleg bedien, met insluiting van 'n skakelwerf/-vak, beheergebou, heidings, ens.
- » 'n batterykragbergingstelsel (BESS);
- » terreinkantore en instandhoudingsgeboue, met insluiting van werkswinkelgebiede vir instandhouding en berging;
- » stapelwerwe; en
- » toegangspaaie en interne distrusisepaaie.

Infrastruktuur wat met elke Windkragaanleg verband hou, sal insluit:

- » windturbines;
- » betonfondasies en vaste blaai vir turbines;
- » wisselrigters en transformators;
- » tydelike stapelwerwe wat die bergings- en monteergebiede sal huisves;
- » kables tussen die turbines, wat ondergronds gelê moet word waar dit prakties moontlik is;
- » 'n tydelike beton lotaanleg;
- » 33/132 kV interne aanlegsubstasie;
- » ondergrondse kables van die interne substasie af tot by die kollektorsubstasie;
- » elektriese en hulptoerusting wat by die kollektorsubstasie benodig word wat daardie windkragaanleg bedien, met insluiting van 'n skakelwerf/-vak, beheergebou, heidings, ens.
- » 'n batterykragbergingstelsel (BESS);
- » toegangspaaie en interne distrusisepaaie;
- » terreinkantore en instandhoudingsgeboue, met insluiting van werkswinkelgebiede vir instandhouding en berging.

Die roosterkonneksie-infrastruktuur vir alle projekte sal insluit:

- » Sentrale kollektorsubstasie bestaande uit:
 - 33/132 kV kollektorsubstasie;
 - verwante toerusting, infrastruktuur en geboue;
 - tydelike en permanente stapelwerfgebiede;
- » Distribusielyn:
 - * 'n Dubbelkring 132 kV distrusielyn sal opgerig word om die sentrale 132 kV distrusiesubstasie met Eskom se bestaande Gamma-substasie te verbind.

Die besonderhede vir die onderskeie projekte is soos volg:

Projeknaam	Opwekkingsvermoë	Plaasnaam en -no.	Gedeeltesno.
Nku FV-sonkragaanleg	100 MW	Rondavel 85	0 & 1
Moriri FV-sonkragaanleg	100 MW	Rondavel 85	0 & 1
Kwana FV-sonkragaanleg	100 MW	Rondavel 85	0 & 1
Angora Windkragaanleg	140 MW	Gegundefontein 53 Ptn 11 / Vogelstruisfontein 84 Ptn 0 / Rondavel 85 Ptns 0 & 1	11
Merino Windkragaanleg	140 MW	Rondavel 85 Ptns 0 & 1 / Bult & Rietfontein 96 Ptn 9 / Vogelstruisfontein 84 Ptn 0	0 & 1

Elektriese kragnetinfrastruktuur (EKI)	Vermoë	Plaasnaam en -gedeelte	Infrastruktuurkomponente
Kollektor-EKI	132 kV	<ul style="list-style-type: none"> » Gedeelte 0 van die plaas Annex Rondavel 86 » Gedeelte 1 van die plaas Annex Rondavel 86 » Gedeelte 1 van die plaas Uit Vlucht Fontein 265 » Gedeelte 0 van die plaas Wynandsfontein 91 » Gedeelte 1 van die plaas Wynandsfontein 91 » Gedeelte 3 van die plaas Vlefontein 90 » Gedeelte 0 van die plaas Burgersfontein 92 » Gedeelte 1 van die plaas Nieuwe Fontein 89 » Gedeelte 0 van die plaas Rondavel 85 » Gedeelte 1 van die plaas Rondavel 85 » Gedeelte 0 van die plaas Kleinfontein 93 » Gedeelte 8 van die plaas Jan Booysens Onder Plaats 94 » Gedeelte 1 van die plaas Bult & Rietfontein 96 » Restant van Plaas 3 	<ul style="list-style-type: none"> » 132 kV kollektorsubstasie en verwante 132 kV kraglyn

Aansoeke om Omgewingsmagtiging: Elke hernubare kragaanleg sal as 'n aparte losstaande projek opgerig word, gevolglik sal aparte Bestekopname- en Omgewingsimpevalueringprosesse (B- & OIE-prosesse) vir elke aanleg onderneem word. Eweneens sal die roosterkonneksie-oplossing onderwerp word aan 'n aparte Basiese Evalueringproses (BE-proses), wat oorweging aan bedryfbare alternatiewe vir die kraglynkorridors sal skenk. Elke onderskeie hernubare aanlegprojek en die roosterkonneksie-infrastruktuur vereis aansoeke om Omgewingsmagtiging (OM) ingevolge die Nasionale Wet op Omgewingsbestuur (Wet 107 van 1998) (NEMA) en die 2014 OIE-regulasies (Staatskennisgewing R326), wat deur B&OIE-prosesse vir elke hernubare kragaanleg en 'n BE-proses vir die roosterkonneksie-infrastruktuur ondersteun moet word.

Openbare Deelnameprosesse: Savannah Environmental (Edms.) Bpk. is aangestel as die omgewingskonsultant wat verantwoordelik is om die onderskeie B&OIE-, BE- en Openbare Deelnameprosesse ter staving van die aansoeke om OM te onderneem. Weens die nabyheid van die hernubare kragaanlegte en die kragnetkonneksie-oplossings aan mekaar, sal die OIE-prosesse en openbare deelnameprosesse vir die projekte gelyklopend onderneem word, wat die publiek 'n geleentheid sal bied om die volle omvang van die beoogde ontwikkelings te verstaan en op elkeen van die projekte kommentaar te lewer. **Om meer inligting te bekom en om op die projekte se databasisse te registreer, verstrek asseblief u naam, kontakbesonderhede en belang by die projek skriftelik aan:**

Nicolene Venter by Savannah Environmental

Posbus 148, Sunninghill, 2157

E-pos: publicprocess@savannahsa.com

Tel: 011 656 3237 / Faks: 086 684 0547

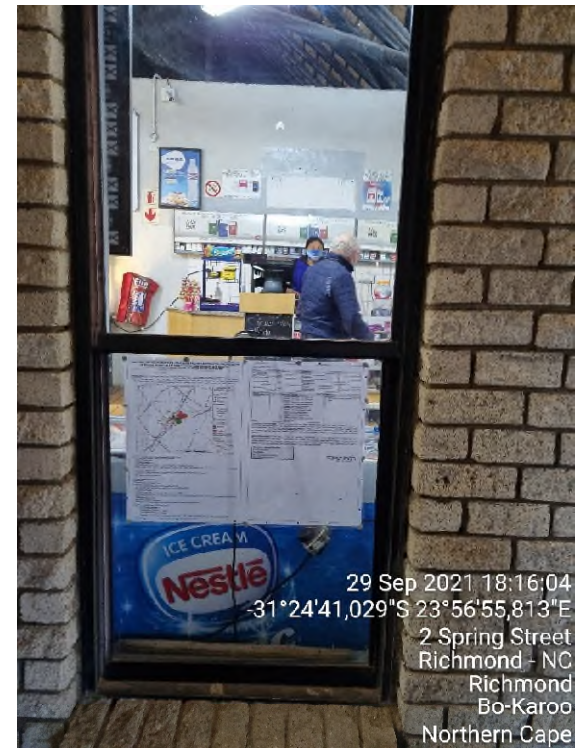
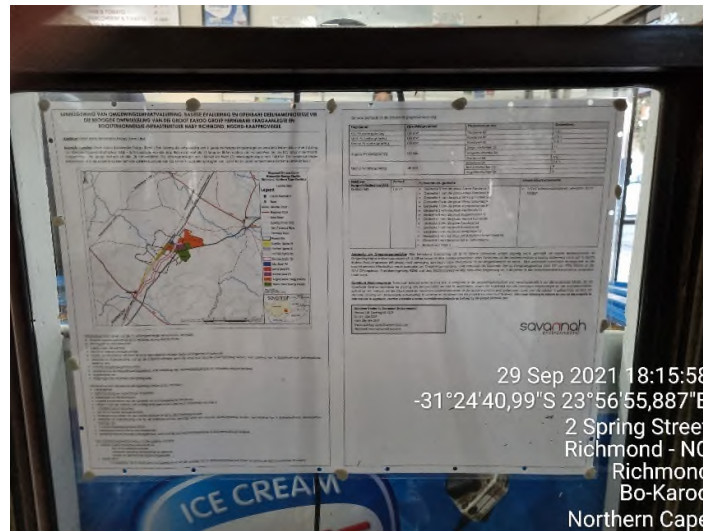
Webwerf: www.savannahsa.com



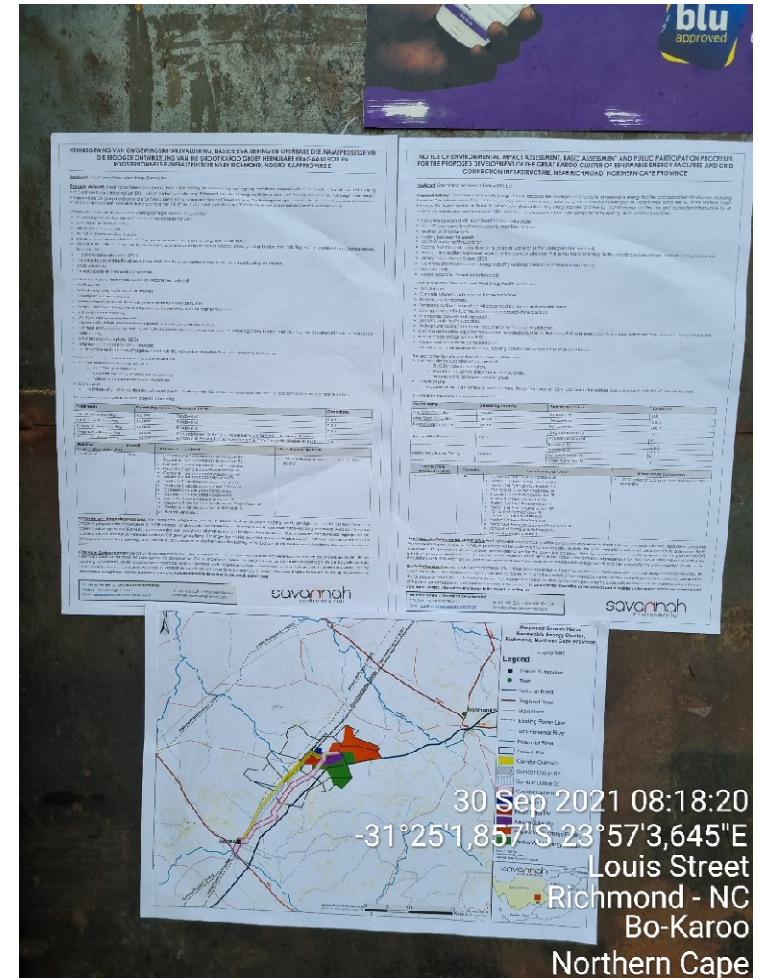
PROOF OF PROCESS NOTICES (Date placed: Wednesday, 29 September 2021 – Richmond)

CALTAX SERVICE STATION





AL-AMIN SUPERMARK



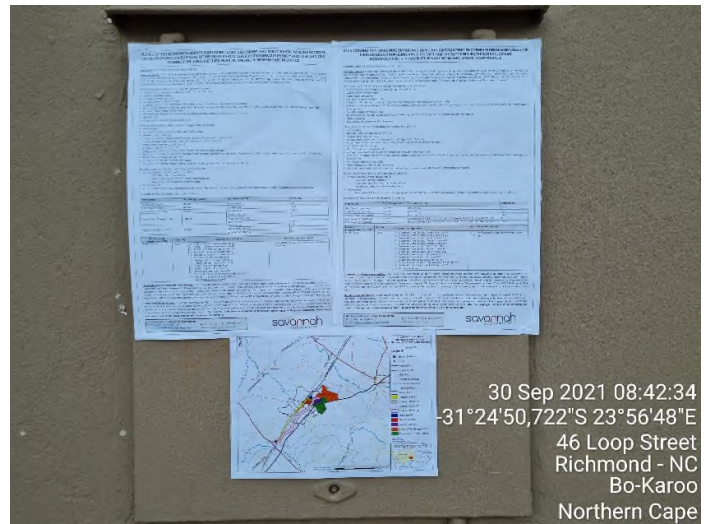
NTSIKELELO TIDA COMMUNITY LIBRARY



30 Sep 2021 08:31:26
-31°25'3,693"S 23°57'8,468"E
711 Daisy Street
Richmond - NC
Bo-Karoo
Northern Cape



PEP STORE



30 Sep 2021 08:42:34
-31°24'50,722"S 23°56'48"E
46 Loop Street
Richmond - NC
Bo-Karoo
Northern Cape



30 Sep 2021 08:42:46
-31°24'50,279"S 23°56'47,801"E
46 Loop Street
Richmond - NC
Bo-Karoo
Northern Cape



30 Sep 2021 08:42:54
-31°24'50,348"S 23°56'47,676"E
46 Loop Street
Richmond - NC
Bo-Karoo
Northern Cape

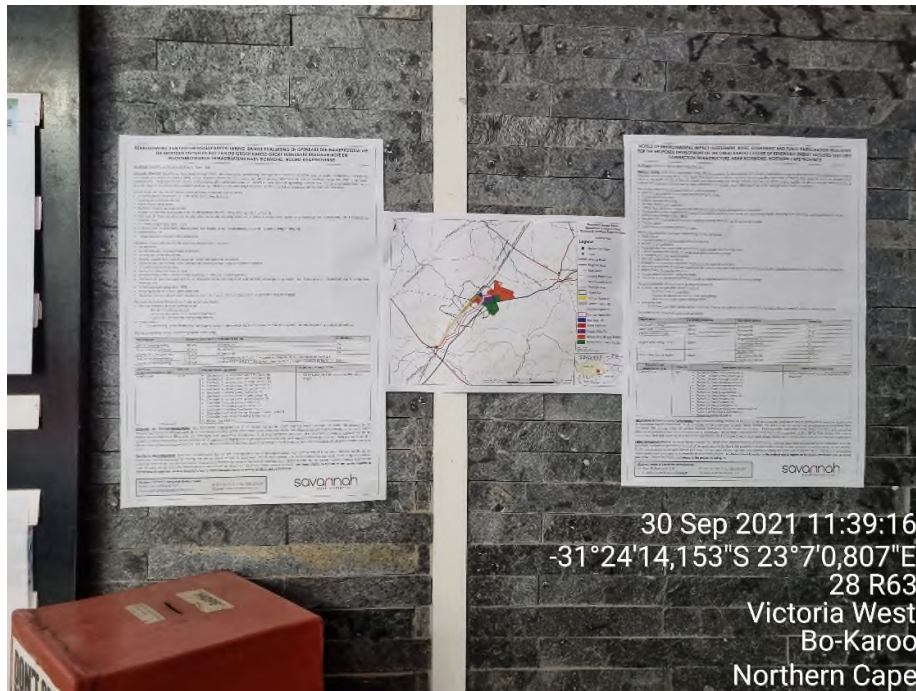
UBUNTU MUNICIPALITY OFFICES





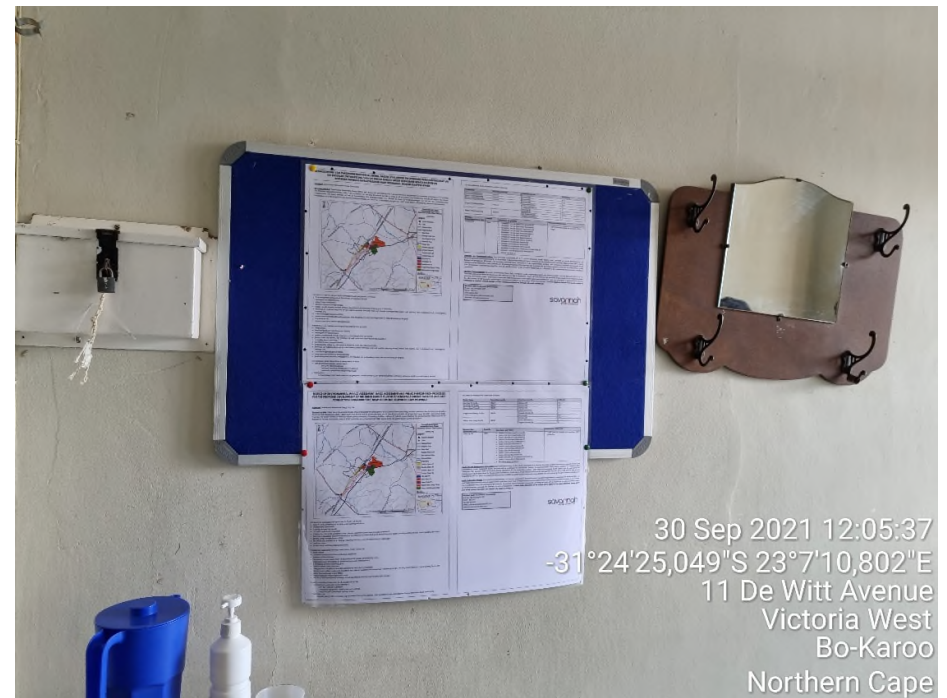
SPAR – VICTORIA WEST





CLINIC – VICTORIA WEST





Advertisements

NOTICE OF ENVIRONMENTAL IMPACT ASSESSMENT, BASIC ASSESSMENT & PUBLIC PARTICIPATION PROCESSES FOR THE PROPOSED DEVELOPMENT OF THE GREAT KAROO CLUSTER OF RENEWABLE ENERGY FACILITIES & GRID CONNECTION INFRASTRUCTURE, NEAR RICHMOND, NORTHERN CAPE PROVINCE

Applicant: Great Karoo Renewable Energy (Pty) Ltd.

Proposed Activity: Establishment of three (3) Solar Photovoltaic (PV) Energy Facilities, two (2) Wind Energy Facilities & grid connection infrastructure comprising a 132kV central collector substation & a 132kV power line to enable the connection of five (5) renewable energy facilities to the national grid for the evacuation of the generated electricity. The connection point to the national grid will be the existing Eskom Gamma Substation. Infrastructure associated with each project includes:

Solar Energy Facilities	Wind Energy Facilities	Grid Connection Infrastructure
<ul style="list-style-type: none"> » Solar PV array comprising PV modules & mounting structures. » Inverters & transformers. » Cabling between the panels. » 33/132kV onsite facility substation. » Cabling from the onsite substation to the collector substation (either underground or overhead). » Electrical & auxiliary equipment required at the collector substation that serves that solar energy facility, including switchyard/bay, control building, fences, etc. » Battery Energy Storage System (BESS). » Site offices & maintenance buildings, including workshop areas for maintenance & storage. » Laydown areas. » Access roads & internal distribution roads. 	<ul style="list-style-type: none"> » Wind turbines. » Concrete turbine foundations & turbine hardstands. » Inverters & transformers. » Temporary laydown areas which will accommodate storage & assembly areas. » Cabling between the turbines, to be laid underground where practical. » A temporary concrete batching plant. » 33/132kV onsite facility substation. » Underground cabling from the onsite substation to the collector substation. » Electrical & auxiliary equipment required at the collector substation that serves that wind energy facility, including switchyard/bay, control building, fences, etc. » Battery Energy Storage System (BESS). » Access roads & internal distribution roads. » Site offices & maintenance buildings, including workshop areas for maintenance & storage. 	<ul style="list-style-type: none"> » Central collector substation which consists of: <ul style="list-style-type: none"> * 33/132kV collector substation. * Associated equipment, infrastructure, & buildings. * Temporary & permanent laydown areas. » Distribution Line: <ul style="list-style-type: none"> * A double-circuit 132kV distribution line to connect the central collector 132kV substation to the existing Eskom Gamma Substation will be constructed.

Project Location: The five (5) proposed renewable energy facilities, along with their associated grid connection infrastructure, are located approximately 35km South-West of Richmond along the N1 & approximately 80km South-East of Victoria West along the R63 in the Northern Cape Province, within the Ubuntu Local Municipality, & the Pixley Ka Seme District Municipality. A portion (approximately 2km) of the 132kV power line that will connect the 132kV central collector substation to the Eskom Gamma Substation falls within the Beaufort West Local Municipality which forms part of the greater Cape Winelands District Municipality in the Western Cape Province.

Solar Energy Facilities 100MW		Wind Energy Facilities 140MW	
Project	Property	Project	Properties
Nku Solar PV Facility	» Farm Rondavel 85 (Portion 0 & 1)	Angora Wind Energy Facility	» Portion 11 of Farm Gegundefontein 53
Moriri Solar PV Facility			» Portion 0 of Farm Vogelstruisfontein 84
Kwana Solar PV Facility		Merino Wind Energy Facility	» Portion 1 of Farm Rondavel 85
			» Portion 0 of Farm Rondavel 85
			» Portion 9 of Farm Bult & Rietfontein 96

Savannah Environmental website: <https://savannahsa.com/public-documents/energy-generation/the-great-karoo-cluster-of-renewable-energy-facilities/>

Collector Electrical Grid Infrastructure (EGI)		
Project	Properties	
Collector EGI (132kV)	<ul style="list-style-type: none"> » Portion 0 of Farm Annex Rondavel 86 » Portion 1 of Farm Annex Rondavel 86 » Portion 1 of Farm Uit Vlugt Fontein 265 » Portion 0 of Farm Wynandsfontein 91 » Portion 1 of Farm Wynandsfontein 91 » Portion 3 of Farm Vlekfontein 90 » Portion 0 of Farm Burgersfontein 92 	<ul style="list-style-type: none"> » Portion 1 of Farm Nieuwe Fontein 89 » Portion 0 of Farm Rondavel 85 » Portion 1 of Farm Rondavel 85 » Portion 0 of Farm Kleinfontein 93 » Portion 8 of Farm Jan Booyens Onder Plaats 94 » Portion 1 of Farm Bult & Rietfontein 96 » Remaining extent of Farm 3

Savannah Environmental website: <https://savannahsa.com/public-documents/grid-infrastructure/the-great-karoo-cluster-grid-connection-infrastructure/>

Scoping & Environmental Impact Assessment (S&EIA) & Basic Assessment (BA) Processes: In terms of Sections 24 & 24D of the National Environmental Management Act (No 107 of 1998), as read with Government Notice R324 – R327, as amended, a S&EIA process is required for each renewable energy facility. Similarly, a BA process is required for the grid connection infrastructure. Savannah Environmental is undertaking the required S&EIA, BA, & public participation processes for these projects.

Scoping Reports & BA Report available for review & comment: The Scoping & Reports for each of the renewable energy facilities are available for download, review, & comment on the Savannah Environmental website (see applicable link in table above). The 30-day review & comment period of the Scoping Reports is from **Friday, 12 November 2021** until **Monday, 13 December 2021**. The availability of the BA Report for the grid connection infrastructure for a 30-day review and comment period will be communicated in due course.

Information Session: Interested and affected parties (I&APs) are invited to attend the Information Session (poster display) which will take place at the Richmond Show Grounds on **Thursday, 2 December 2021** at **14:00**. The Information Session will take place in compliance with COVID-19 protocols, and attendees are limited to 12 persons at a time in the Hall. Please contact Nicolene Venter or Tumelo Mathulwe (details below) to register your attendance.

To obtain further information & register on the project database, please submit your name, contact information & interest in the project to the contact person below.

Nicolene Venter or Tumelo Mathulwe at Savannah Environmental
 P.O. Box 148, Sunninghill, 2157
 Tel: 011 656 3237
 Fax: 086 684 0547
 Mobile: 060 978 8396 (including please call me)
 Email: publicprocess@savannahsa.com
 Website: www.savannahsa.com



AGS Saamstaan Kontrei winkel

weereens 'n sukses

DE AAR – Die afgelope Saterdag, 6 November het die AGS kerk in Du Toitstraat hulle tweede Saamstaan Kontrei Winkel aangebied.

Reeds vroegoggend het die vure hoog gebrand om die wors en sosaties gereed te kry vir die besoekers. Uitstallers het hulle produkte gereed gekry en besoekers het opgedaag om die oggend in die ope lug te geniet. Hierdie keer is daar ook 'n kinderwedstryd aangebied en daar is in verskillende ouderdomsgroepe meeding. Die wenner was as volg: Baba katagorie - Twinkle Star: Eerste: Liame en tweede Juan-Rie. 1 - 2 Jaar - Busy Bee: Eerste: Payton, tweede: Arabellah en derde Anna-Mae. 3 - 4 Jaar - Full of Joy: Eerste: Elin-Rie en tweede Cloé. Baie geluk aan hierdie kleuters.

Daar was 'n groot getal uitstallers en beslis iets vir een en almal se smaak. Heerlike basaarpoeding, worsrolle, sosaties, tuisgebak, lekkergoed, koeldrank, diereprodukte, vetplante, handgemaakte items en vele meer. Daar was ook gesigverf, donkiekarritte en 'n springkasteel vir die kleinspan. Besoekers het beslis heerlik saam gekuier onder die koelte bome.

Hierdie was weereens 'n suksesvolle kontrei winkel en die organiseerders is dankbaar teenoor elke borg en besoeker wat die dag moontlik gemaak het. Daar word reeds 'n volgende Kontrei winkel vir Februarie 2022 beplan. Daar word ook 'n veiling beplan en indien u enige goedere het wat u wil laat opveel of selfs wil uitstal is u welkom om vir Antonette Bisset by 074 579 7658 te skakel vir verdere inligting.



Daar is weereens heerlik saamgekuier by die AGS Kerk se Saamstaan Kontrei winkel.



Die wenner van die Baba Katagorie - Twinkle Star - Liamé.



Die wenner van die 1-2 jaar Katagorie - Busy Bee - Payton.



Tweede Plek van ons Baba Katagorie - Twinkle Star - Juan-Rie



Tweede Plek van ons 1-2 jaar Katagorie - Busy Bee - Arabellah



Die grootmense het ook nie terug gestaan nie en deel uitgemaak van die pret.

Taxpayers reminded to file returns ahead of deadline

THE South African Revenue Service (SARS) has urged individual non-provisional taxpayers to file their income tax returns on or before the deadline of 23 November 2021.

In a statement, the revenue collector warned that penalties would be levied on taxpayers who fail to submit their income tax returns by this deadline. "Taxpayers must note that according to changes in legislation, SARS will levy penalties from 1 December 2021 where one of more returns are outstanding. "Before the change in the legislation, SARS could only levy penalties where two or more returns were outstanding. This older rule will remain in place for one more year for 2020 and earlier returns," said the revenue service in a statement. SARS Commissioner Edward Kieswetter said the filing of a tax return is a legal obligation for those taxpayers who are required to file and contributes towards a culture of voluntary compliance. "But beyond the legal requirement to file a return, taxpayers who do the right thing are enabling government to meet the basic service needs of the poor and vulnerable by providing social grants and health care, amongst others," he said.

He said SARS had put in place a number of upgraded digital channels that are available 24/7. "This will help provide clarity and make it easy for taxpayers to meet the deadline of 23 November without any difficulty. These channels include amongst others, SARS eFiling, SARS MobiApp and an SMS service. More details are available on the SARS website," he said. Provisional taxpayers have until 31 January 2022 to fulfil all their filing obligations.

Kerssangdiens vind plaas

BRITSTOWN – Die jaar is amper om, en die NG Kerk Britstown is baie opgewonde oor die Feesseisoen wat vir voorlê!

NG Kerk Britstown bied volgende week die 21ste November, in Samewerking met DJ Muller 'n onvergeetlike Kerssangdiens aan. Die diens belooft om 'n belewenis te wees! Tydens die diens sal daar ook Nagmaal bedien word en die nuutste lidmate sal verwelkom word. Die verrigtinge begin om 09:00 en daar sal na die tyd verversings wees om lekker saam te kuier in die Kerksaal.

Sien jou daar! Bring u hele gesin en geniet die Kerssangdiens saam met die gemeente.



Geagte Redakteur

Ek wil graag my misnoë uitspreek teenoor die swak dienslewering van ons plaaslike hospitaal.

Jy moet wag tot vyf ure voordat jy gehelp word, maar as jy geken word dan sal jy voorkeur kry. Daar is min personeel aan diens en die wat aan diens is gaan op tee of ete, terwyl jy wag om gehelp te word. Hulle gee net nie om oor jou toestand nie. 'n Mens kan nie glo dat so groot hospitaal so swak diens het nie, die ou hospitaal was baie beter. Daar sal beslis daadwerklik opgetree moet word.

Baie Dankie, Heinrich Louw, 071 173 3746.



Three learners from St John's Primary School represented the school at a Mathematics competition at Kareeville Primary School. The learners did very well and got the school two second places and one third place. The school is proud of these learners. F.l.t.r: Tamaryn Perry (Grade 5 - Second place), Asikelele Nothula (Grade 5 - Second place) and Keisha Grensville (Grade 4 - Third place).



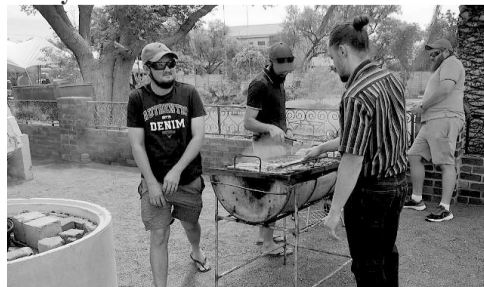
Derde Plek van ons 1-2 jaar Katagorie - Busy Bee - Anna-Mae.



Die wenner van die 3-4 jaar Katagorie - Full of Joy - Elin-Rie.



Tweede Plek van ons 3-4 jaar Katagorie - Full of Joy - Cloé



Reeds vroegoggend is daar vuur aangesteek wat gesorg het vir 'n heerlike atmosfeer.

NOTICE OF ENVIRONMENTAL IMPACT ASSESSMENT, BASIC ASSESSMENT & PUBLIC PARTICIPATION PROCESSES FOR THE PROPOSED DEVELOPMENT OF THE GREAT KAROO CLUSTER OF RENEWABLE ENERGY FACILITIES & GRID CONNECTION INFRASTRUCTURE, NEAR RICHMOND, NORTHERN CAPE PROVINCE

Applicant: Great Karoo Renewable Energy (Pty) Ltd.

Proposed Activity: Establishment of three (3) Solar Photovoltaic (PV) Energy Facilities, two (2) Wind Energy Facilities & grid connection infrastructure comprising a 132kV central collector substation & a 132kV power line to enable the connection of five (5) renewable energy facilities to the national grid for the evacuation of the generated electricity. The connection point to the national grid will be the existing Eskom Gamma Substation. Infrastructure associated with each project include:

Solar Energy Facilities	Wind Energy Facilities	Grid Connection Infrastructure
<ul style="list-style-type: none"> Solar PV array comprising PV modules & mounting structures. Inverters & transformers. Cabling between the panels. 33/132kV onsite facility substation. Cabling from the onsite substation to the collector substation (either underground or overhead). Electrical & auxiliary equipment required at the collector substation that serves that solar energy facility, including switchyard/bay, control building, fences, etc. Battery Energy Storage System (BESS). Site offices & maintenance buildings, including workshop areas for maintenance & storage. Laydown areas. Access roads & internal distribution roads. 	<ul style="list-style-type: none"> Wind turbines. Concrete turbine foundations & turbine hardstands. Inverters & transformers. Temporary laydown areas which will accommodate storage & assembly areas. Cabling between the turbines, to be laid underground where practical. A temporary concrete batching plant. 33/132kV onsite facility substation. Underground cabling from the onsite substation to the collector substation. Electrical & auxiliary equipment required at the collector substation that serves that wind energy facility, including switchyard/bay, control building, fences, etc. Battery Energy Storage System (BESS). Access roads & internal distribution roads. Site offices & maintenance buildings, including workshop areas for maintenance & storage. 	<ul style="list-style-type: none"> Central collector substation which consists of: <ul style="list-style-type: none"> 33/132kV collector substation. Associated equipment, infrastructure, & buildings. Temporary & permanent laydown areas. Distribution Line: <ul style="list-style-type: none"> A double-circuit 132kV distribution line to connect the central collector 132kV substation to the existing Eskom Gamma Substation will be constructed.

Project Location: The five (5) proposed renewable energy facilities, along with their associated grid connection infrastructure, are located approximately 35km South-West of Richmond along the N1 & approximately 80km South-East of Victoria West along the R63 in the Northern Cape Province, within the Ubuntu Local Municipality, & the Pixley Ka Seme District Municipality. A portion (approximately 2km) of the 132kV power line that will connect the 132kV central collector substation to the Eskom Gamma Substation falls within the Beaufort West Local Municipality which forms part of the greater Cape Winelands District Municipality in the Western Cape Province.

Solar Energy Facilities 100MW		Wind Energy Facilities 140MW	
Project	Property	Project	Properties
Nku Solar PV Facility		Angara Wind Energy Facility	<ul style="list-style-type: none"> Portion 11 of Farm Gegundfontein 53 Portion 0 of Farm Vogelstruisfontein 84 Portion 1 of Farm Rondavel 85 Portion 0 of Farm Rondavel 85
Moriri Solar PV Facility	<ul style="list-style-type: none"> Farm Rondavel 85 (Portion 0 & 1) 	Merino Wind Energy Facility	<ul style="list-style-type: none"> Portion 1 of Farm Rondavel 85 Portion 0 of Farm Rondavel 85 Portion 9 of Farm Bult & Rietfontein 96
Kwana Solar PV Facility			

Savannah Environmental website: <https://savannahsa.com/public-documents/energy-generation/the-great-karoo-cluster-of-renewable-energy-facilities/>

Collector Electrical Grid Infrastructure (EGI)	
Project	Properties
Collector EGI (132kV)	<ul style="list-style-type: none"> Portion 0 of Farm Annex Rondavel 86 Portion 1 of Farm Annex Rondavel 86 Portion 1 of Farm Uit Vlugt Fontein 265 Portion 0 of Farm Wynandsfontein 91 Portion 1 of Farm Wynandsfontein 91 Portion 3 of Farm Vieklfontein 90 Portion 0 of Farm Burgersfontein 92 Portion 1 of Farm Nieuwe Fontein 89 Portion 0 of Farm Rondavel 85 Portion 1 of Farm Rondavel 85 Portion 0 of Farm Kleinfontein 93 Portion 8 of Farm Jan Booyens Onder Plaats 94 Portion 1 of Farm Bult & Rietfontein 96 Remaining extent of Farm 3

Scoping & Environmental Impact Assessment (S&EIA) & Basic Assessment (BA) Processes: In terms of Sections 24 & 24D of the National Environmental Management Act (No 107 of 1998), as read with Government Notice R324 - R327, as amended, a S&EIA process is required for each renewable energy facility. Similarly, a BA process is required for the grid connection infrastructure. Savannah Environmental is undertaking the required S&EIA, BA, & public participation processes for these projects.

Scoping Reports & BA Report available for review & comment: The Scoping Reports for each of the renewable energy facilities are available for download, review, & comment on the Savannah Environmental website (see applicable link in table above). The 30-day review & comment period of the Scoping Reports is from Friday, 12 November 2021 until Monday, 13 December 2021. The availability of the BA Report for the grid connection infrastructure for a 30-day review and comment period will be communicated in due course.

Information Session: Interested and affected parties (I&APs) are invited to attend the Information Session (poster display) which will take place at the Richmond Show Grounds on Thursday, 2 December 2021 at 14:00. The Information Session will take place in compliance with COVID-19 protocols, and attendees are limited to 12 persons at a time in the Hall. Please contact Nicole Venter or Tumelo Mathulwe (details below) to register your attendance.

To obtain further information & register on the project database, please submit your name, contact information & interest in the project to the contact person below.

Nicole Venter or Tumelo Mathulwe at Savannah Environmental
P.O. Box 148, Sunninghill, 2157
Tel: 011 656 3237
Fax: 086 684 0547
Mobile: 060 978 8396 (including please call me)
Email: publicprocess@savannahsa.com

savannah
environmental

LIVEREAD

LIFEREAD VIR KRAGLYN VERSLAG

1st LUGTYD:

Saterdag, 21 Mei 2022 – tussen 19h00 & 21h00
Afrikaans

Aan alle gemeenskapslede – die Basiese Evalueringsverslag vir die gepaardgaande Elektriese Netwerk-koppeling Infrastrukture vir die Great Karoo Groep Hernubare Energie Fasiliteite geleë naby Richmond, Noord-Kaapprovinsie, is beskikbaar vir julle insae en kommentaar vir 'n 30-dae periode vanaf **Vrydag, 20 Mei 2022** tot en met **Maandag, 20 Junie 2022**.

Vir meer inligting, kontak aseblief vir Nicolene by 060 978 8396 (insluitend *please call me*), of stuur 'n epos aan publicprocess@savannahsa.com.

2^{de} LUGTYD:

Saterdag, 11 Junie 2022 – tussen 19h00 & 21h00
Afrikaans

Aan alle gemeenskapslede – die Basiese Evalueringsverslag vir die gepaardgaande Elektriese Netwerk-koppeling Infrastrukture vir die Great Karoo Groep Hernubare Energie Fasiliteite geleë naby Richmond, Noord-Kaapprovinsie, is beskikbaar vir julle insae en kommentaar vir 'n 30-dae periode vanaf **Vrydag, 20 Mei 2022** tot en met **Maandag, 20 Junie 2022**.

Die 30-dae oorsig en kommentaar periode eindig op **Maandag, 20 Junie 2022** en die verslag kan steeds afgelaai word by www.savannahsa.com.

Vir meer inligting, kontak aseblief vir Nicolene by 060 978 8396 (insluitend *please call me*), of stuur 'n epos aan publicprocess@savannahsa.com.

Proof to be included in the final BAR