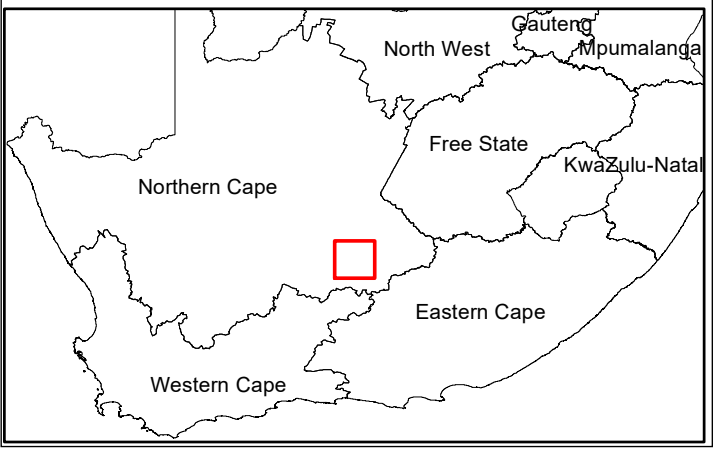


Merino Wind Energy Facility Richmond, Northern Cape Province

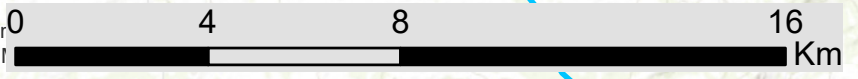
Locality Map

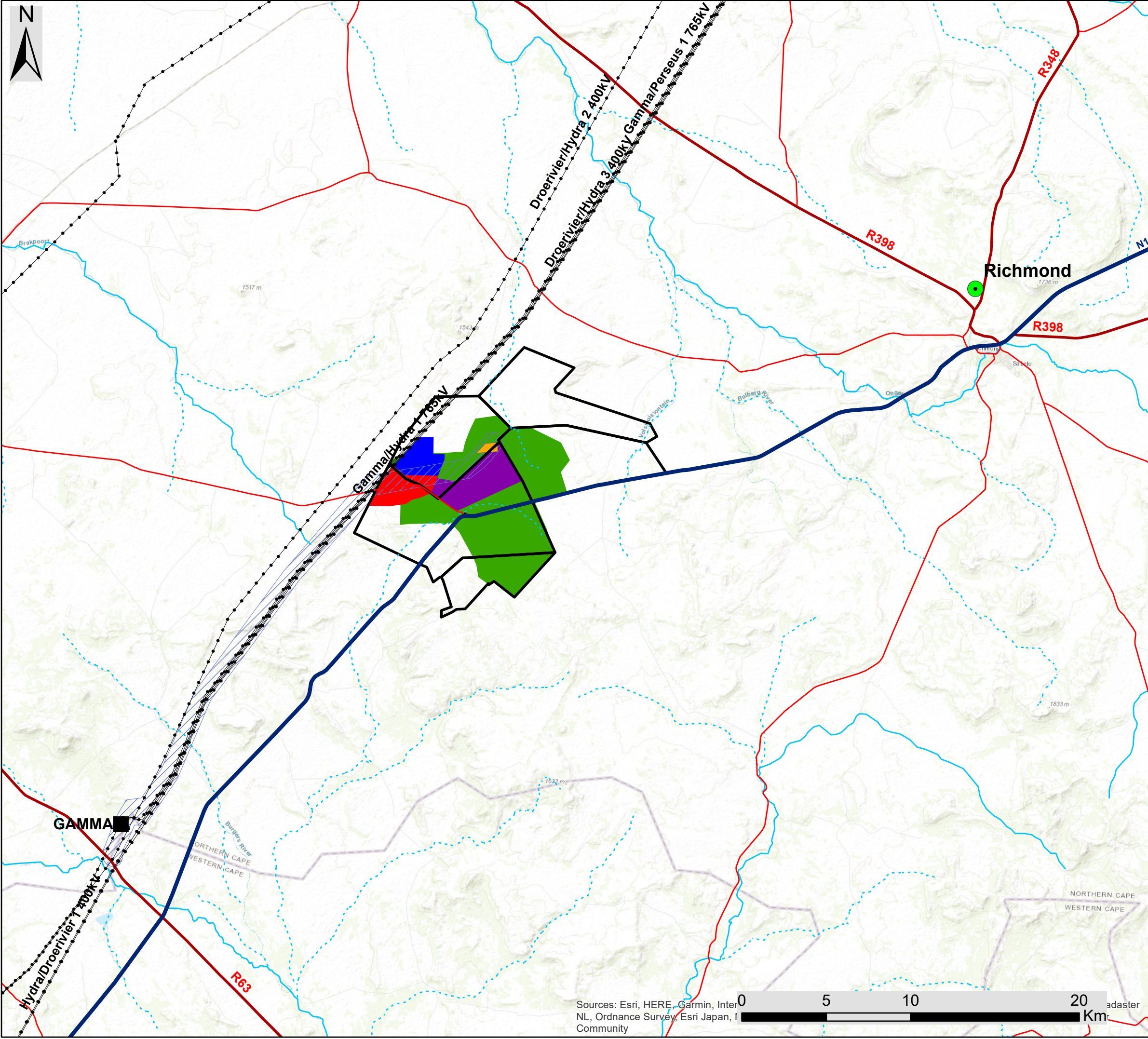
- ### Legend
- Town
 - Eskom Substation
 - Existing Power Line
 - National Road
 - Regional Road
 - Main Road
 - Non-Perennial River
 - Perennial River
 - Project Site
 - Merino Wind Energy Facility Development Area

Scale: 1: 250 000
 Projection: WGS_1984
 Map Ref: MerinoWEF - Locality



Sources: Esri, HERE, Garmin, Inter
 NL, Ordnance Survey, Esri Japan, I
 Community





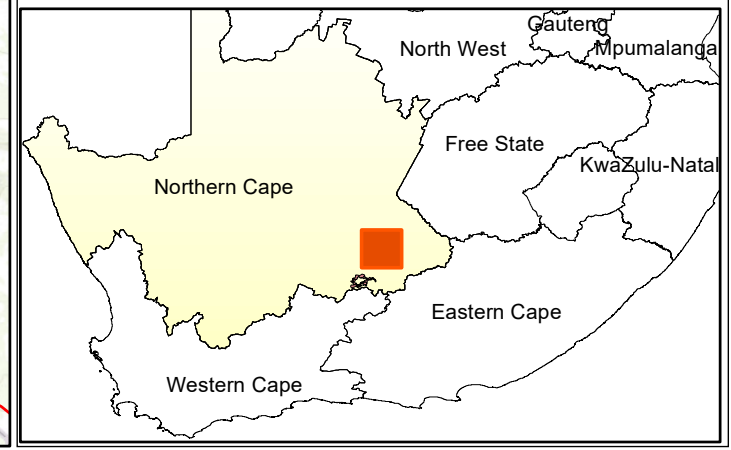
Proposed Greater Karoo Renewable Energy Cluster, Richmond, Northern Cape Province

Locality Map

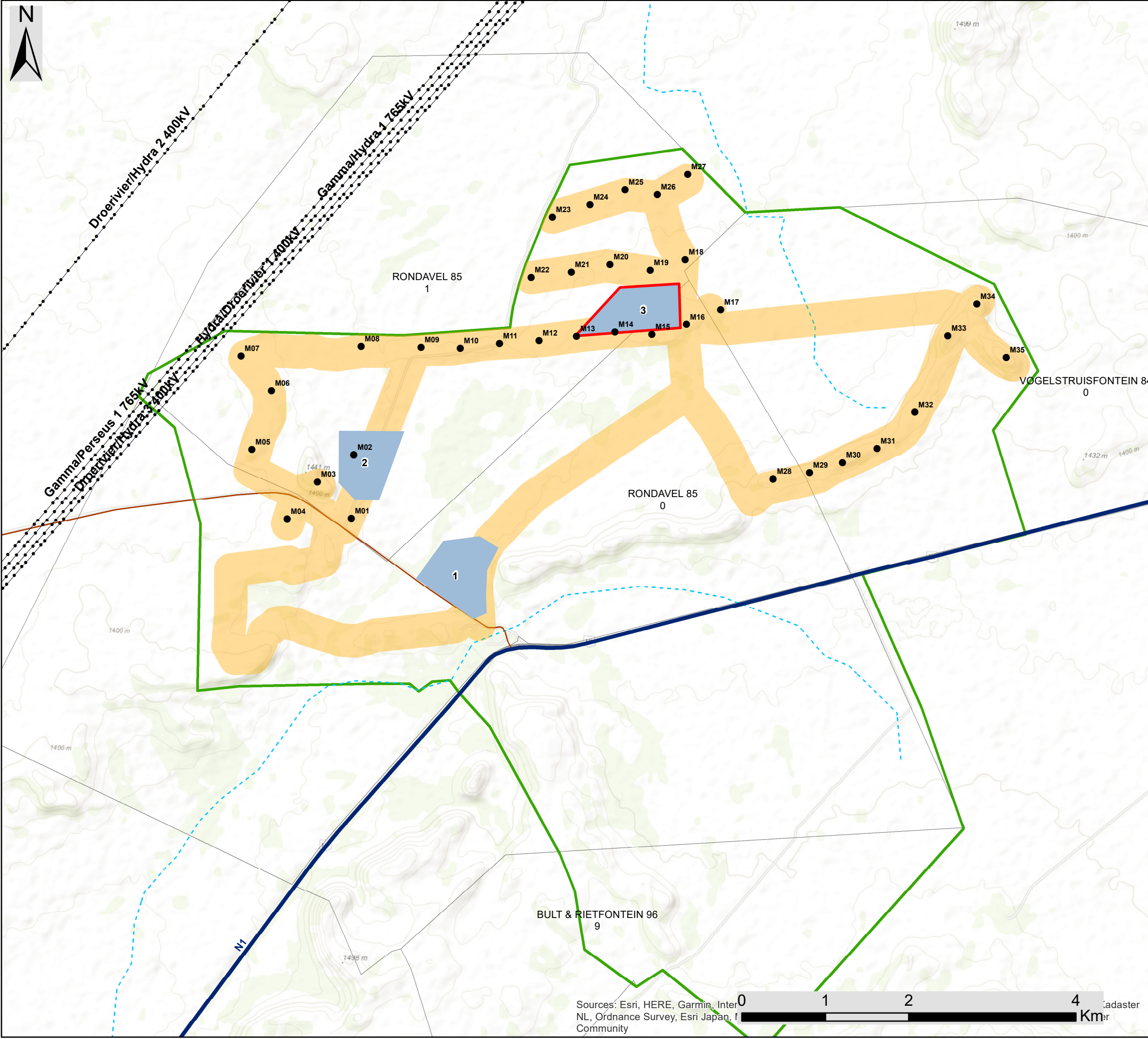
Legend

- Town
- Eskom Substation
- Existing Power Line
- National Road
- Regional Road
- Main Road
- Non-Perennial River
- Perennial River
- Nku Solar PV
- Moriri Solar PV
- Kwana Solar PV
- Merino Wind Farm
- Collector Substation
- Grid Connection Corridor (1km wide)
- Project Sites

Scale: 1: 250 000
 Projection: WGS_1984
 Map Ref: Great Karoo BID - Locality



Sources: Esri, HERE, Garmin, InterNL, Ordnance Survey, Esri Japan, ICommunity

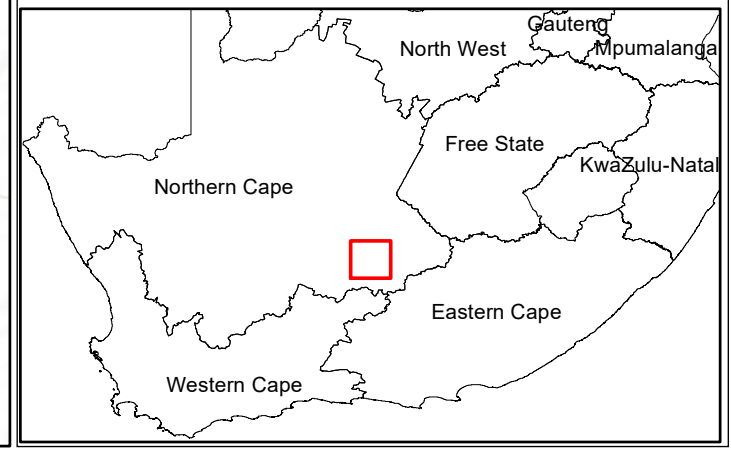


**Merino Wind Energy Facility
Richmond, Northern Cape Province**
Facility Layout Map

Legend

- Existing Power Line
- National Road
- Main Road
- - - Non-Perennial River
- Perennial River
- Project Site
- ▭ Merino Wind Farm Development Area
- Turbines
- ▭ Facility Substation
- ▭ Site Compound Alternatives
- ▭ Internal Access Roads Corridor (200m wide)

Scale: 1: 250 000
 Projection: WGS_1984
 Map Ref: MerinoWEF - Layout



Sources: Esri, HERE, Garmin, Intermap, NL, Ordnance Survey, Esri Japan, Swisstopo, The Mapbox Contributors, Ordnance Survey © Esri, 2015
 0 1 2 4 Km



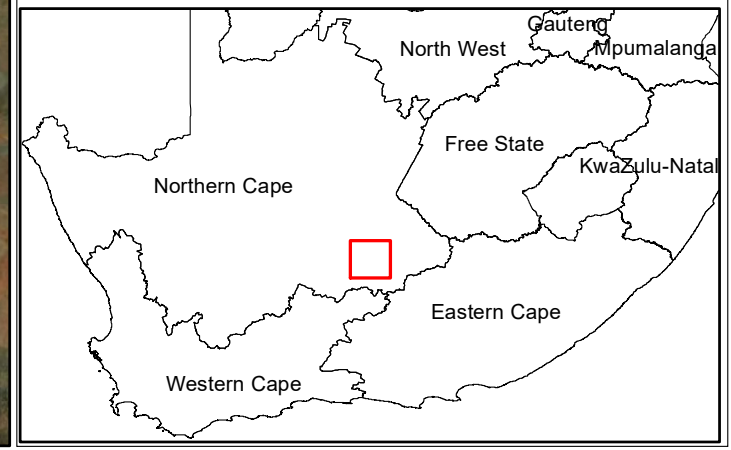
Merino Wind Energy Facility Richmond, Northern Cape Province

Facility Layout & Sensitivity Map

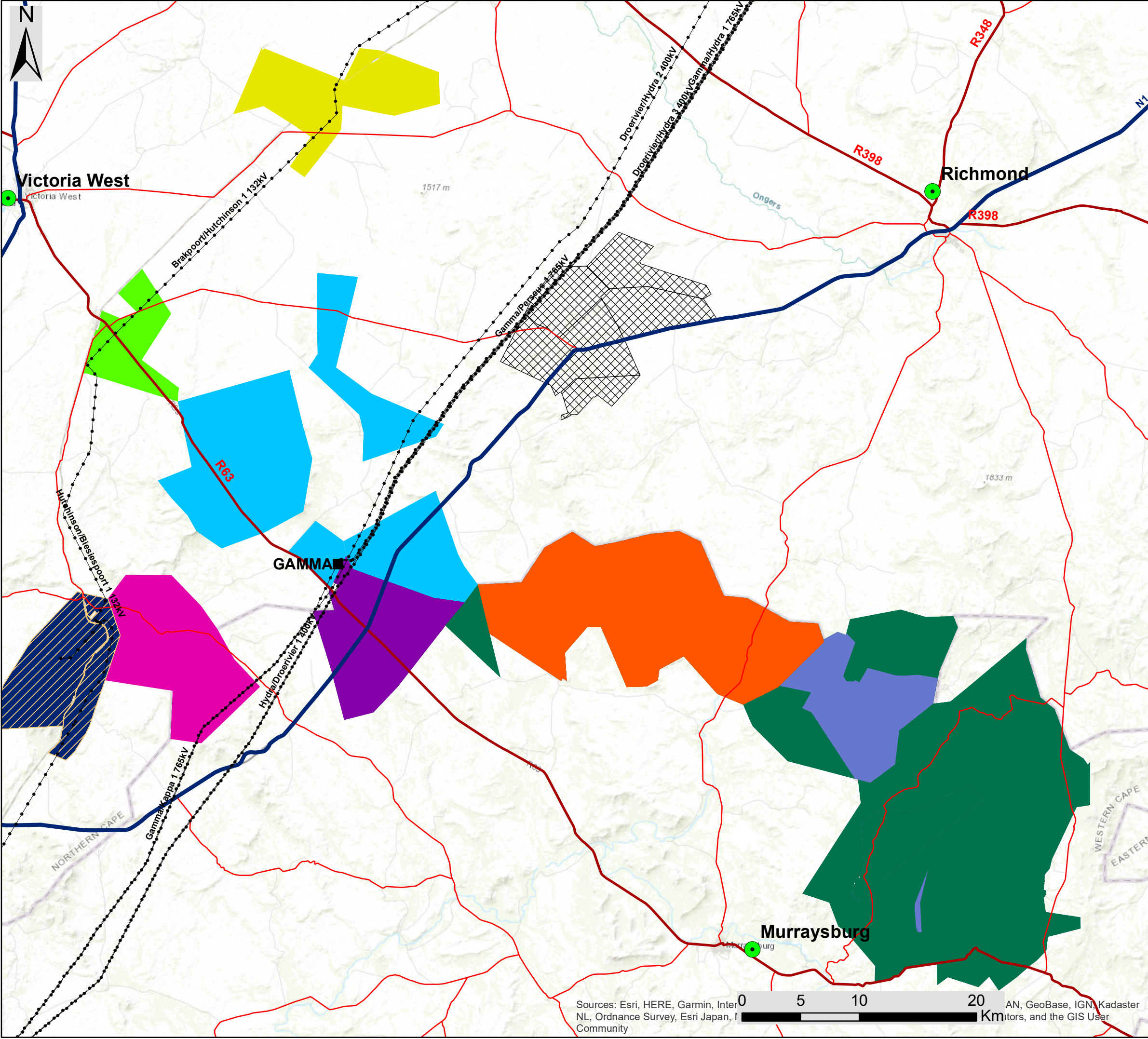
Legend

- Existing Power Line
 - National Road
 - Main Road
 - Non-Perennial River
 - Perennial River
 - Project Site
 - Merino Wind Farm Development Area
- ### Facility Layout Plan
- Turbines
 - Facility Substation
 - Site Compound Alternatives
 - Internal Access Roads Corridor (200m wide)
- ### Environmental Sensitivities
- Noise Sensitive Receptor
 - Heritage Structures (1km Buffer)
 - Avifauna Sensitivity (200m watering point buffer)
 - Avifauna Sensitivity (800m large dam buffer)
 - Verreux Eagle Ridge Buffer
 - High Bat Sensitivity (200m No-go for turbines)

Scale: 1: 250 000
 Projection: WGS_1984
 Map Ref: MerinoWEF - Layout



Source: Esri, Maxar, GeoEye, Earth Community

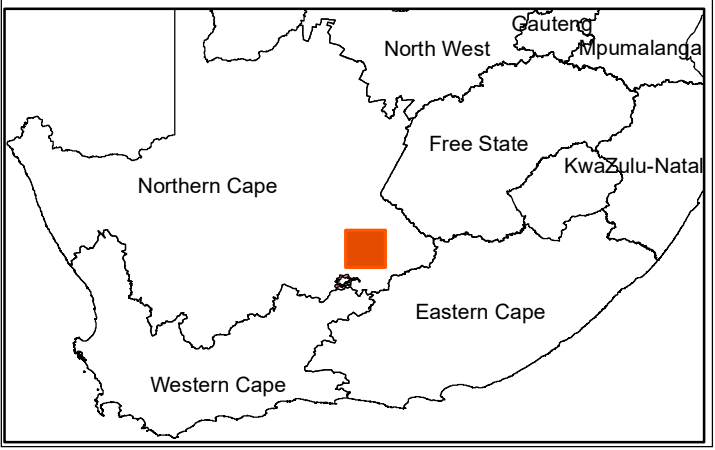


Proposed Greater Karoo Renewable Energy Cluster, Richmond, Northern Cape Province

Cumulative Map

- Legend**
- Town
 - Eskom Substation
 - Existing Power Line
 - National Road
 - Regional Road
 - Main Road
 - Great Karoo Renewable Energy Cluster
- Known Authorised Renewable Energy Facilities (based on affected property)**
- Nobelsfield Wind Energy Facility
 - Bietjiesfontein Solar Energy Facility
 - Karoo Renewable Energy Facility
 - Brakpoort Solar PV Facility
 - Umsinde Emoyeni Wind Energy Facility
 - Aurora Solar PV Facility
 - Mainstream Renewable Energy Cluster
 - Ishwati Emoyeni Wind Energy Facility
 - Trouberg Wind Energy Facility
 - Modderfontein Wind Energy Facility

Scale: 1: 250 000
 Projection: WGS_1984
 Map Ref: Great Karoo Cumulative



Sources: Esri, HERE, Garmin, InterNL, Ordnance Survey, Esri Japan, Community
 0 5 10 20 Km
 AN, GeoBase, IGN, Kadaster