

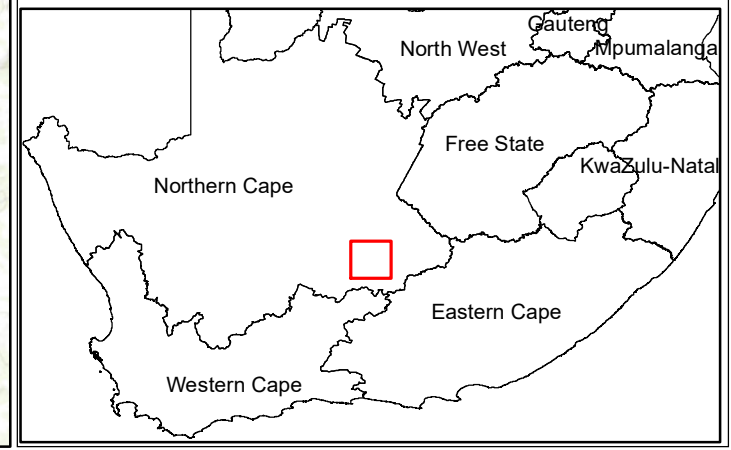
# Angora Wind Energy Facility, Richmond, Northern Cape Province

## Locality Map

### Legend

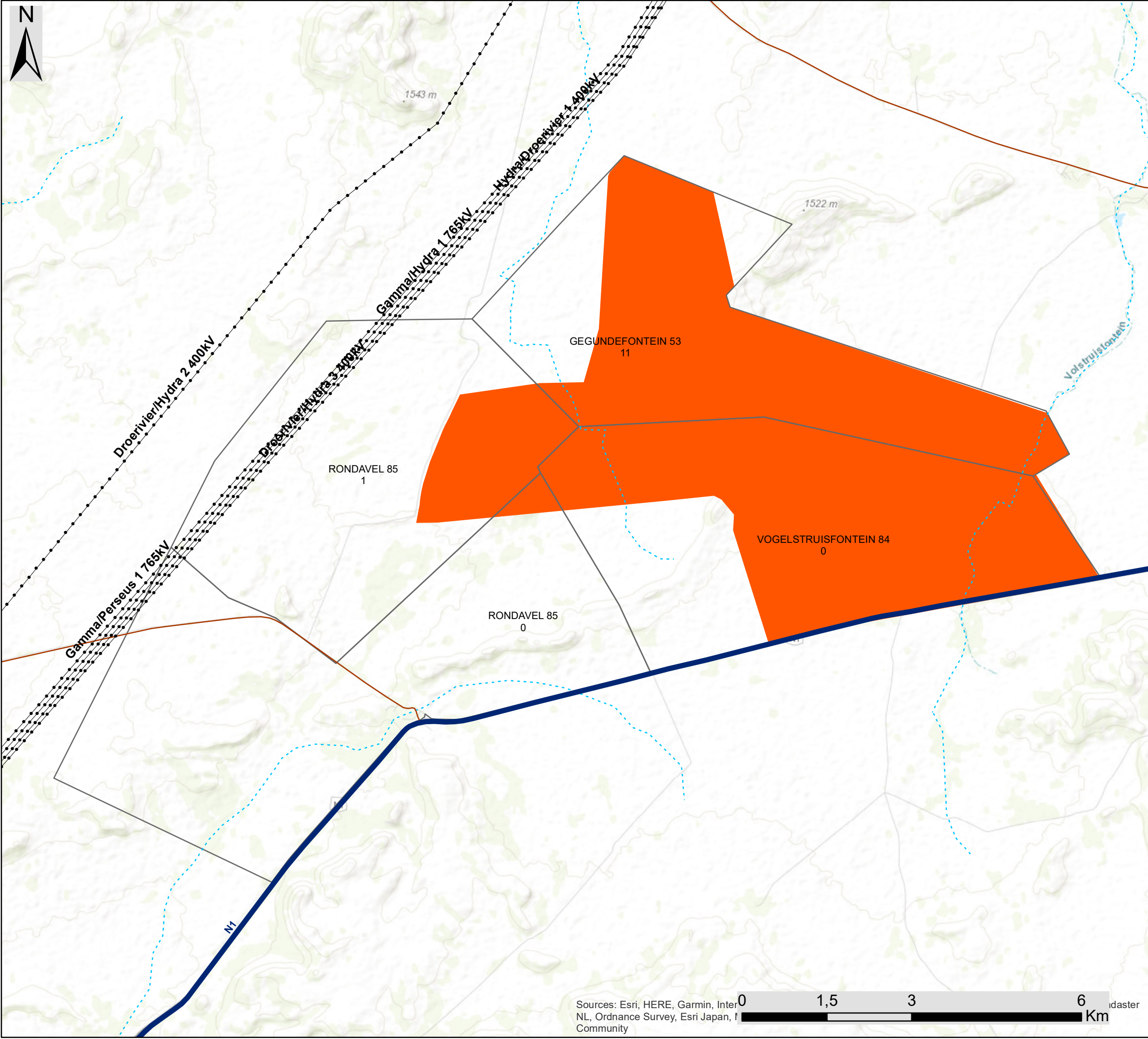
- Town
- Eskom Substation
- Existing Power Line
- National Road
- Regional Road
- Main Road
- Non-Perennial River
- Perennial River
- Angora Wind Energy Facility Development Area
- Project Site

Scale: 1: 250 000  
 Projection: WGS\_1984  
 Map Ref: Great Karoo WEF - Locality



Sources: Esri, HERE, Garmin, InterNL, Ordnance Survey, Esri Japan, ICommunity





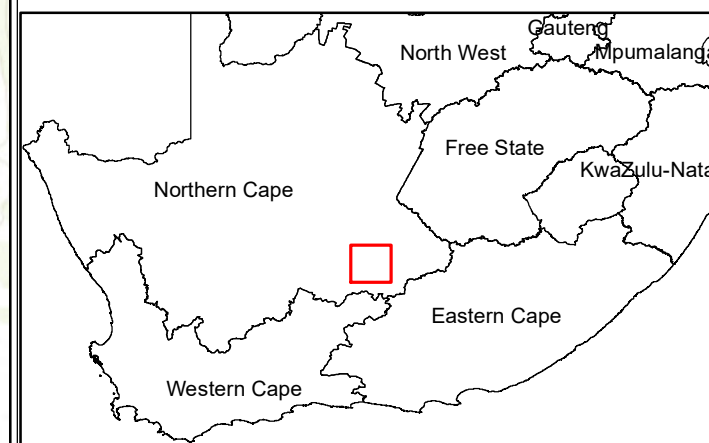
# Angora Wind Energy Facility, Richmond, Northern Cape Province

## Preliminary Layout Map

### Legend

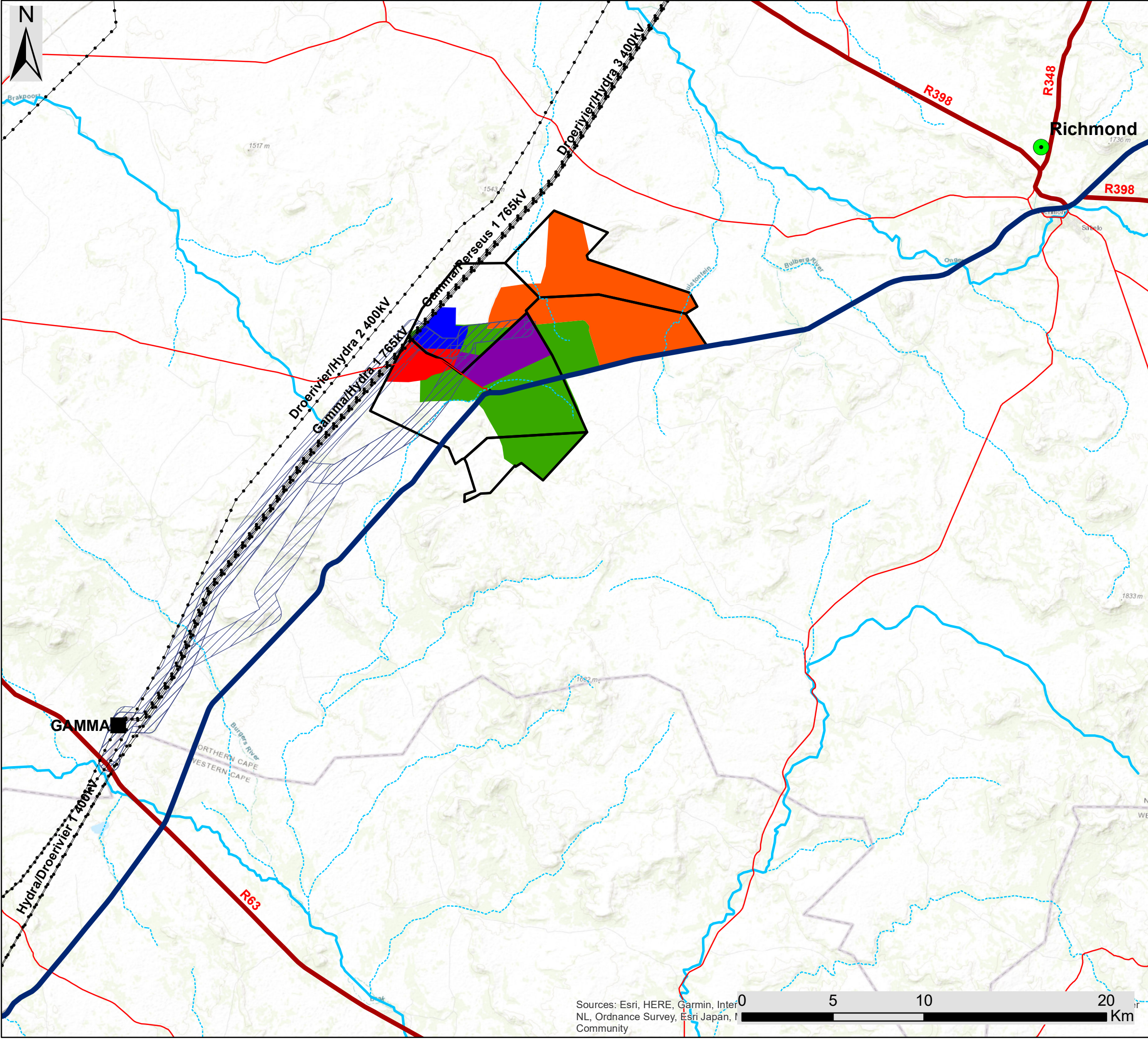
- Town
- Eskom Substation
- Existing Power Line
- National Road
- Regional Road
- Main Road
- Non-Perennial River
- Perennial River
- Project Site
- Angora Wind Energy Facility Development Area

Scale: 1: 250 000  
 Projection: WGS\_1984  
 Map Ref: Great Karoo WEF - Layout



Sources: Esri, HERE, Garmin, Intermap, DeLorme, GeoEye, 6 Km





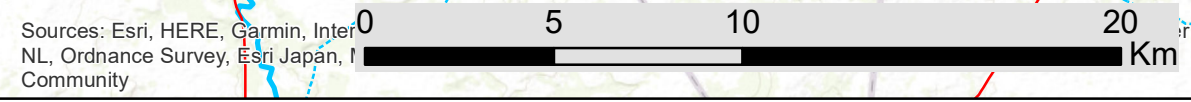
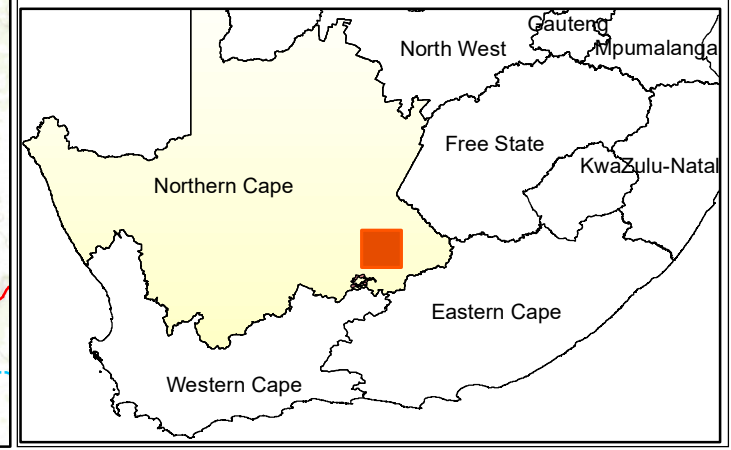
# Proposed Greater Karoo Renewable Energy Cluster, Richmond, Northern Cape Province

## Locality Map

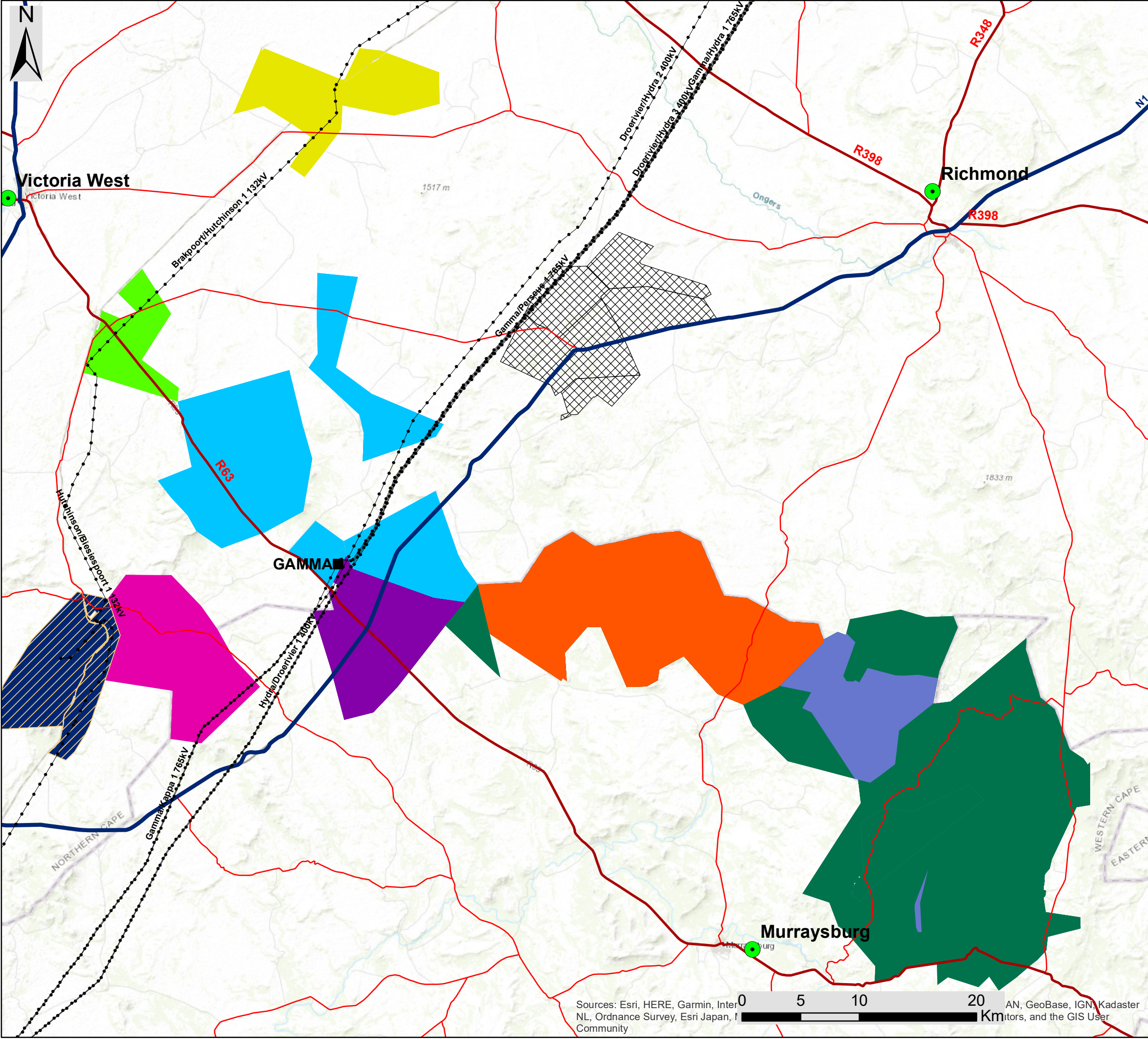
### Legend

- Town
- Eskom Substation
- Existing Power Line
- National Road
- Regional Road
- Main Road
- Non-Perennial River
- Perennial River
- Grid Connection Corridor Alternatives (1km wide)
- Nku Solar PV
- Moriri Solar PV
- Kwana Solar PV
- Angora Wind Energy Facility
- Merino Wind Energy Facility
- Project Sites

Scale: 1: 250 000  
 Projection: WGS\_1984  
 Map Ref: Great Karoo BID - Locality







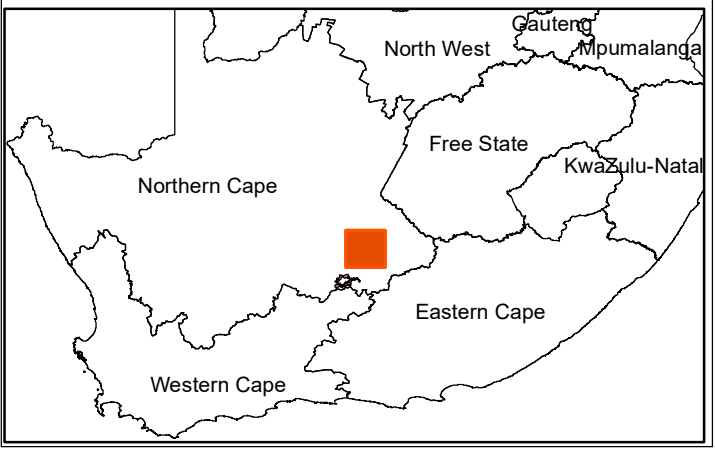
# Proposed Greater Karoo Renewable Energy Cluster, Richmond, Northern Cape Province

## Cumulative Map

### Legend

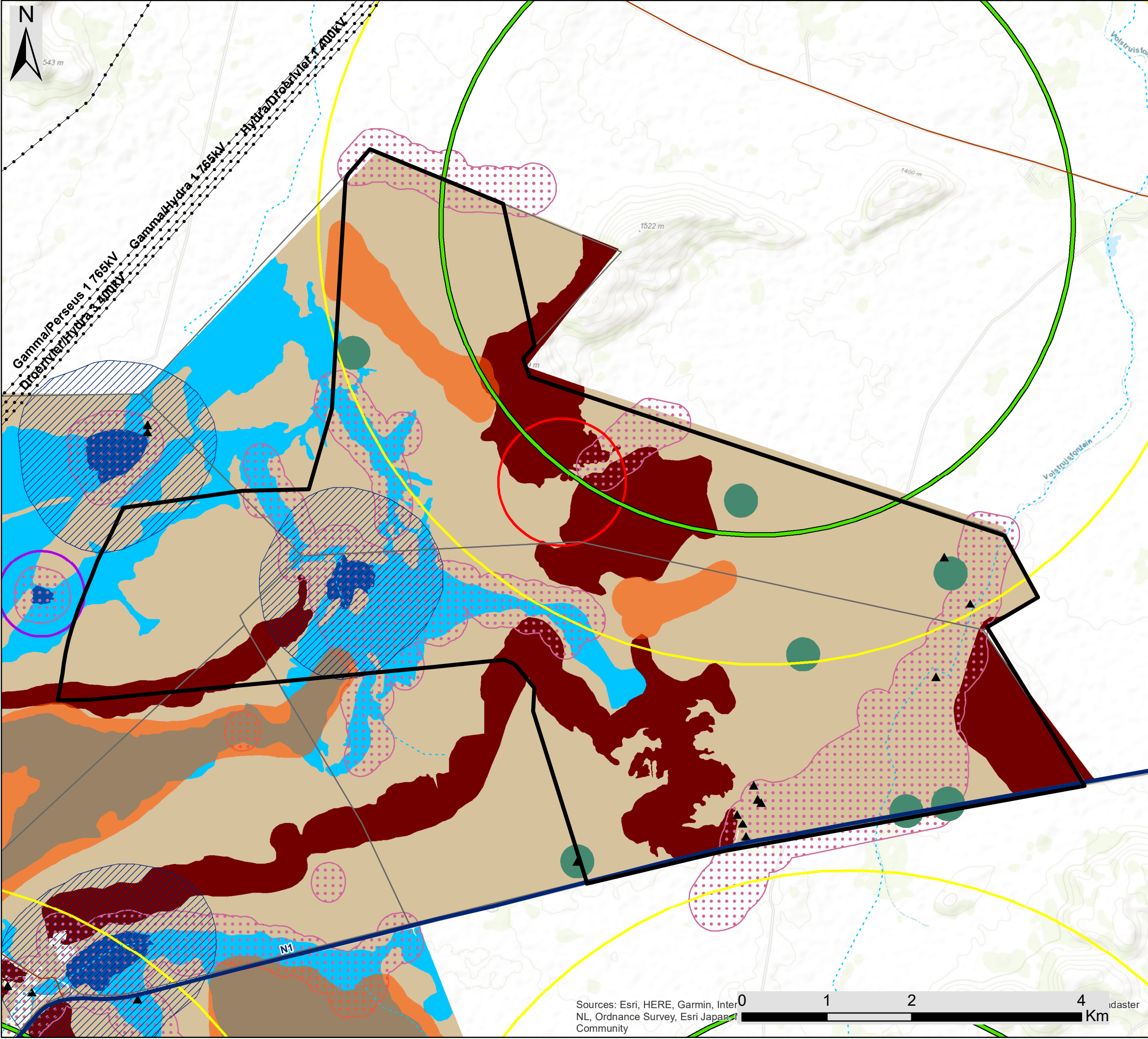
- Town
  - Eskom Substation
  - Existing Power Line
  - National Road
  - Regional Road
  - Main Road
  - Great Karoo Renewable Energy Cluster
- Known Authorised Renewable Energy Facilities (based on affected property)**
- Nobelsfield Wind Energy Facility
  - Bietjiesfontein Solar Energy Facility
  - Karoo Renewable Energy Facility
  - Brakpoort Solar PV Facility
  - Umsinde Emoyeni Wind Energy Facility
  - Aurora Solar PV Facility
  - Mainstream Renewable Energy Cluster
  - Ishwati Emoyeni Wind Energy Facility
  - Trouberg Wind Energy Facility
  - Modderfontein Wind Energy Facility

Scale: 1: 250 000  
 Projection: WGS\_1984  
 Map Ref: Great Karoo Cumulative



Sources: Esri, HERE, Garmin, InterNL, Ordnance Survey, Esri Japan, Community AN, GeoBase, IGN, Kadaster  
 0 5 10 20 Km  
 meters, and the GIS User





# Angora Wind Energy Facility, Richmond, Northern Cape Province

## Preliminary Sensitivity Map

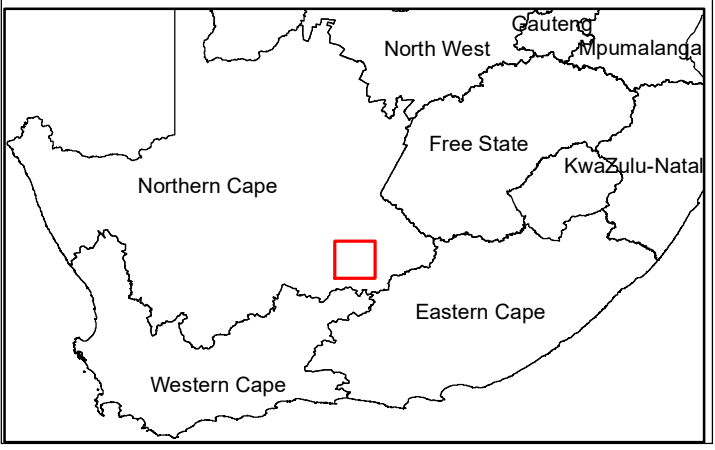
### Legend

- Existing Power Line
- National Road
- Regional Road
- Main Road
- Non-Perennial River
- Perennial River
- Project Site
- Angora Wind Energy Facility Development Area

### Environmental Features & Sensitivities

- Noise Sensitive Receptors
- Verraux Eagle - Turbine No-Go (3.7km)
- Verreaux Eagle - Medium Sensitivity Buffer (5.2km)
- Jackal Buzzard - Turbine No-Go (750m)
- Small Dam - Avifauna Turbine No-Go (500m)
- Waterpoint - Avifauna Turbine No-Go (200m)
- Large Dam - Avifauna Turbine No-Go (800m)
- Bats - Moderate Sensitivity Buffer (150m)
- Bats - High Sensitivity Buffer (200m)
- Drainage - High Ecological Sensitivity
- Open water - High Ecological Sensitivity
- Mountain slopes - Medium-High Ecological Sensitivity
- Karroid plains - Medium Ecological Sensitivity

Scale: 1: 64 000  
 Projection: WGS\_1984  
 Map Ref: Great Karoo WEF - Prelim Sens



Sources: Esri, HERE, Garmin, InterNL, Ordnance Survey, Esri Japan, Community  
 0 1 2 4 Km