



# Red Sands PV2 Facility Northern Cape Province

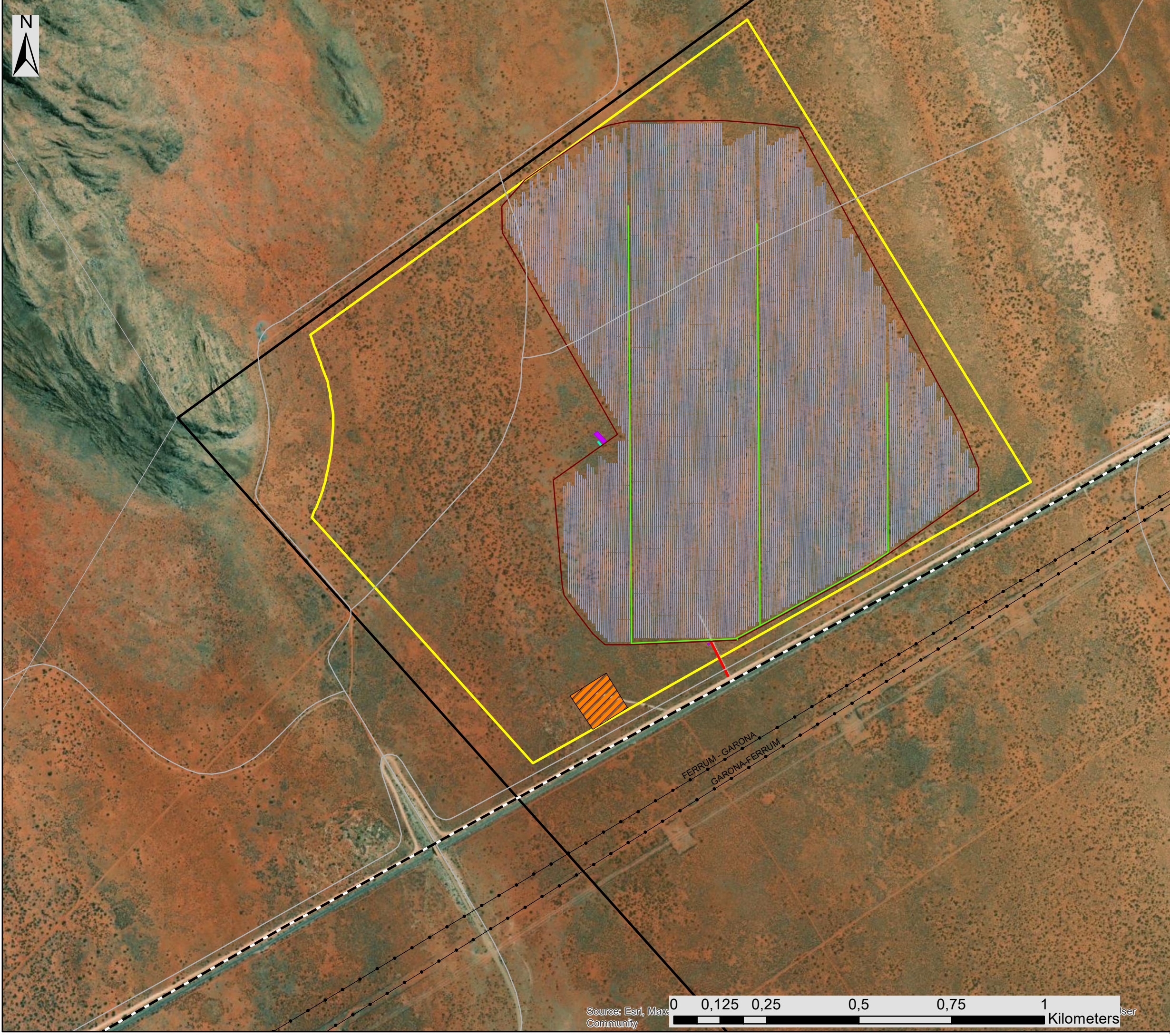
## Layout Map

### Legend

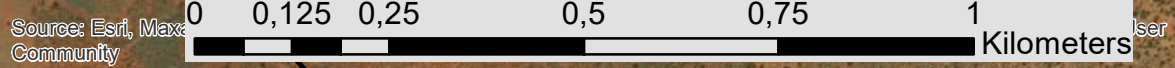
- Railway Line
- Existing Farm Roads
- Existing Power Line
- Farm Portion
- Project Site
- Red Sands PV2 Development Area

### Layout Plan

- Internal Access Road
- PV Fence
- Access Road
- Parking Area
- O&M Building
- PV Array
- Onsite Substation



FERRUM - GARONA  
GARONA-FERRUM

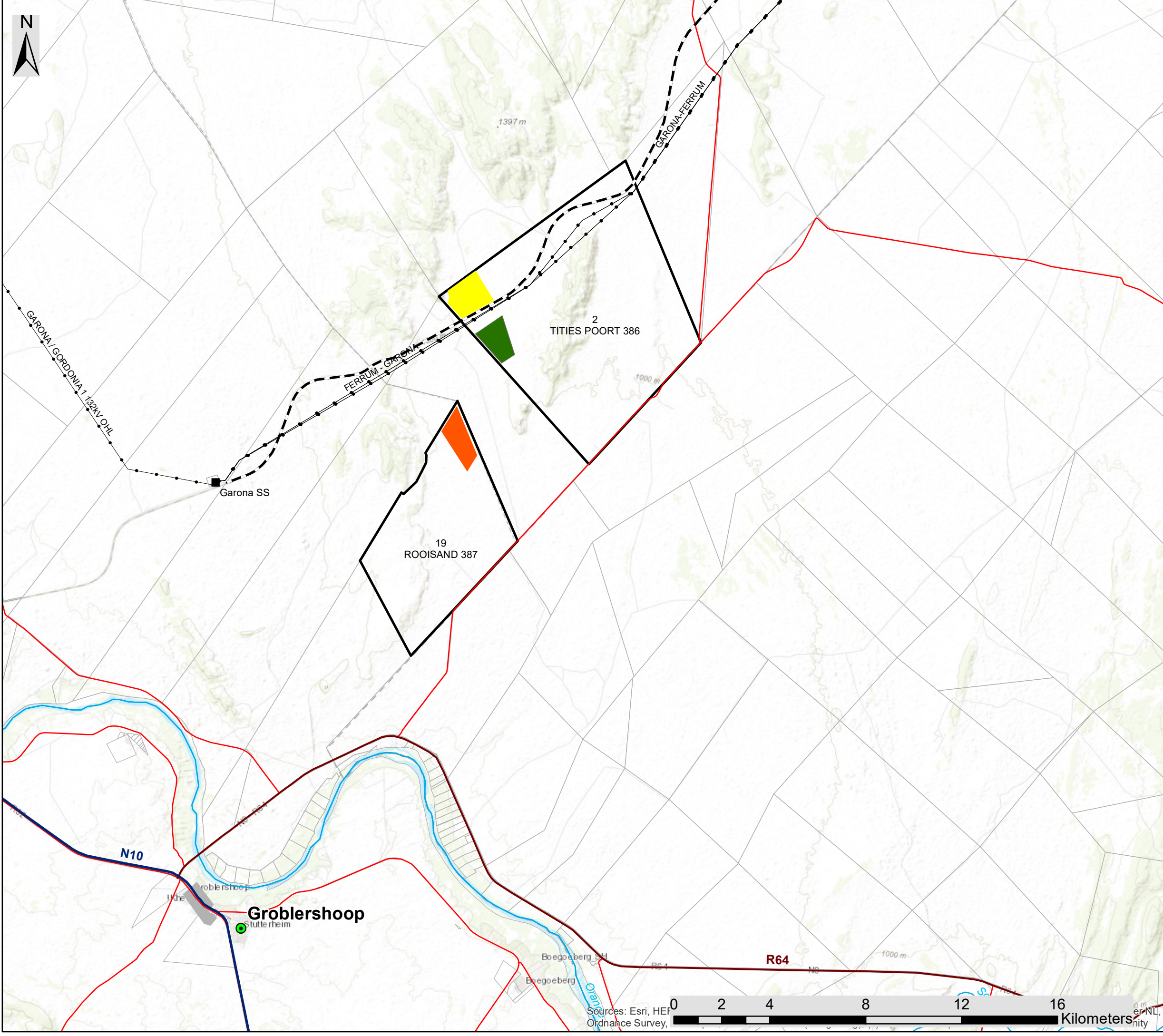


Source: Esri, Max  
Community



Scale: 1:160 000  
Projection: LO19  
Map Ref: Red Sands PV2 - Layout





# Red Sands PV1, Red Sands PV2, & Red Sands PV3 Facilities Northern Cape Province

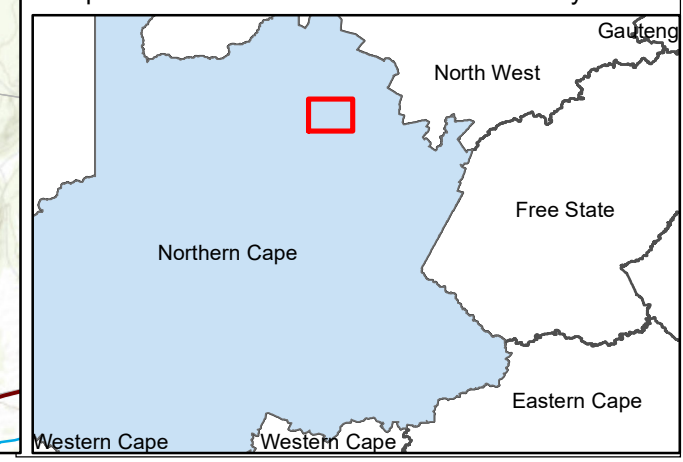
Locality Map

## Legend

- Town
- Eskom Substation
- Railway Line
- Existing Power Line
- National Route
- Regional Road
- Main Road
- Perennial River
- Farm Portion
- Project Site
- Red Sands PV1 Development Area
- Red Sands PV2 Development Area
- Red Sands PV3 Development Area



Scale: 1:160 000  
 Projection: LO19  
 Map Ref: Red Sands PV - Combined Locality



Sources: Esri, HEI  
 Ordnance Survey,

# Red Sands PV1, Red Sands PV2, & Red Sands PV3 Facilities Northern Cape Province

Cumulative Map

## Legend

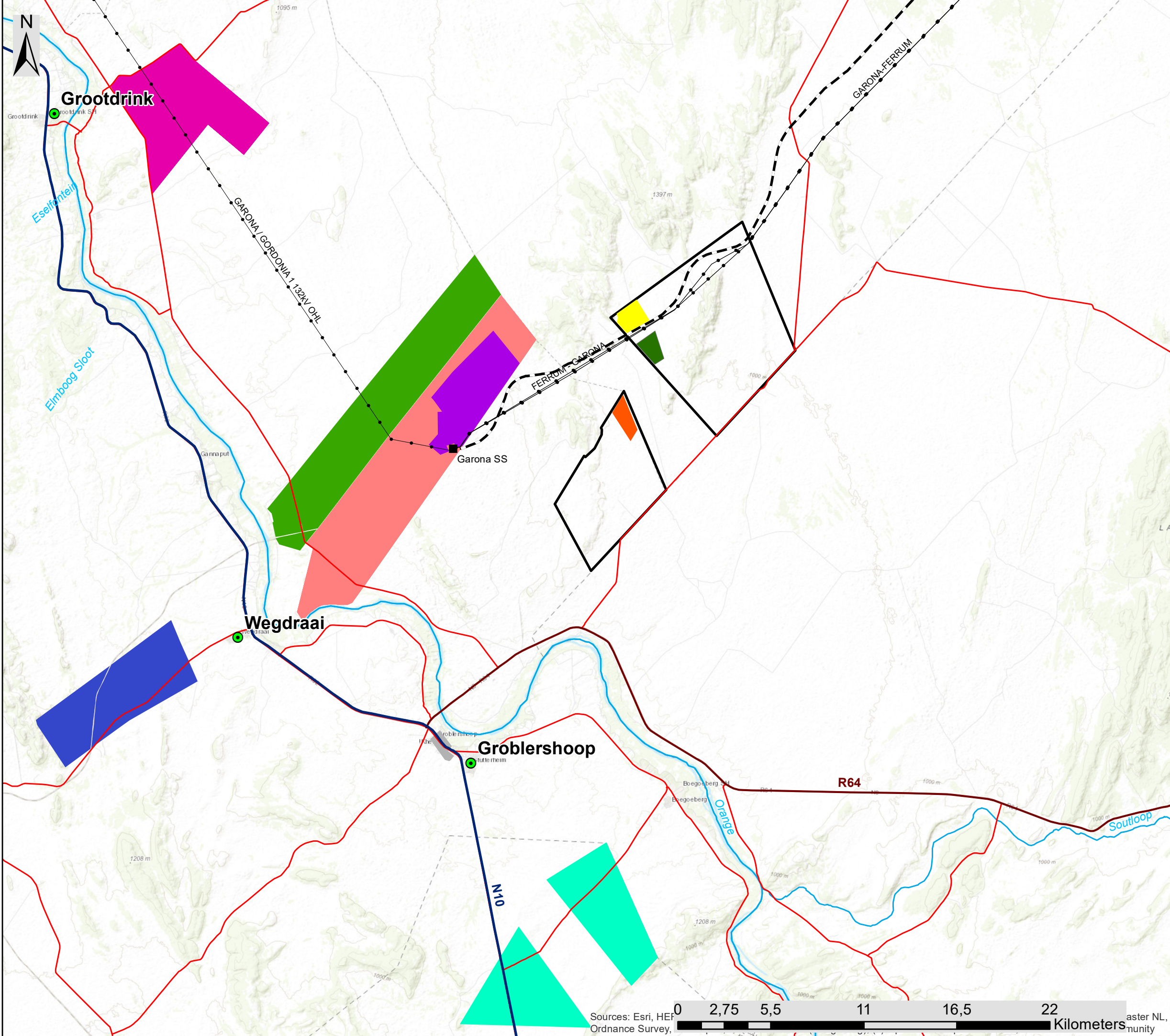
- Town
- Eskom Substation
- Railway Line
- Existing Power Line
- National Route
- Regional Road
- Main Road
- Perennial River
- Project Site
- Red Sands PV1 Development
- Red Sands PV2 Development
- Red Sands PV3 Development

## Known Renewable Energy Projects (based on affected property)

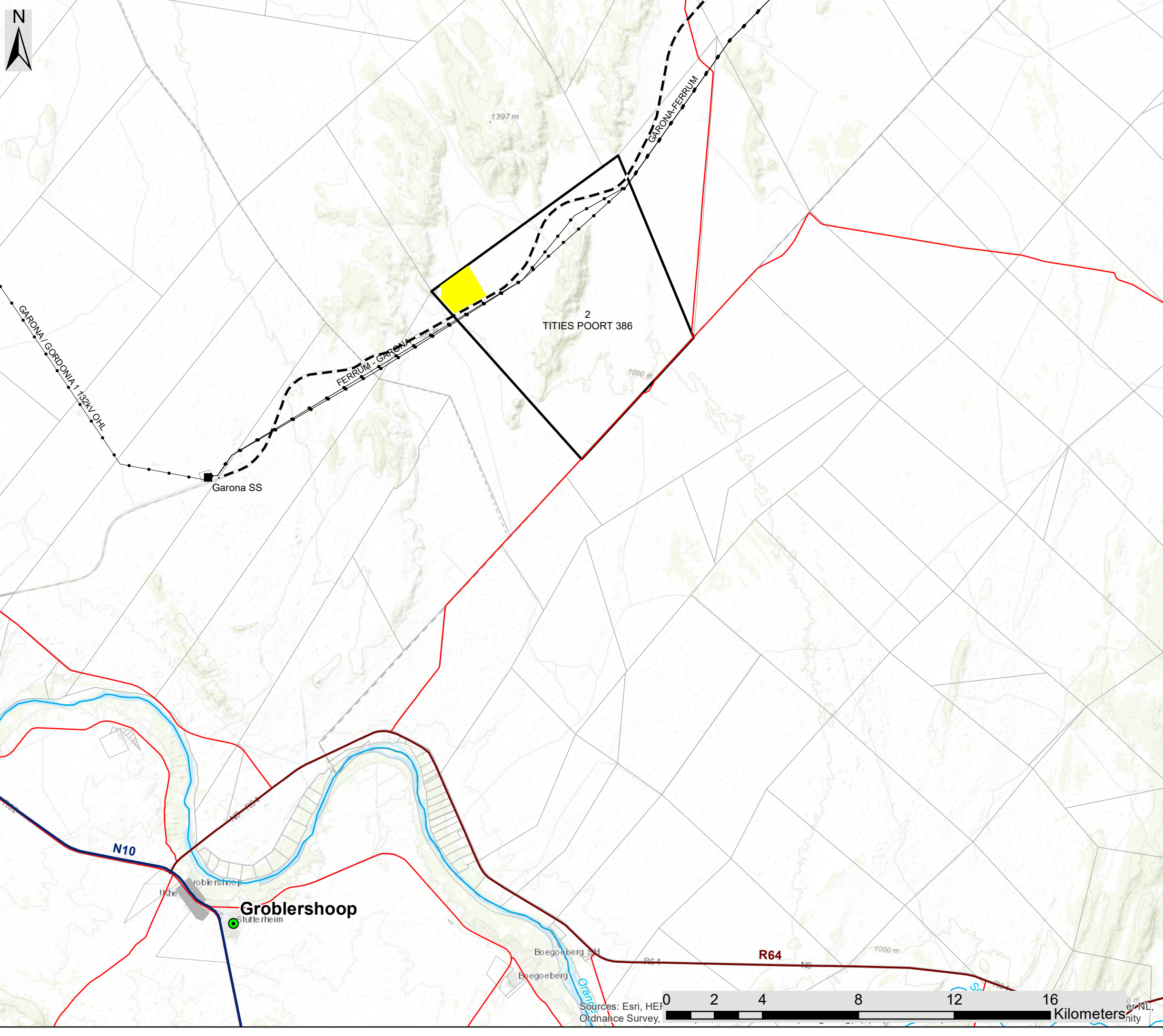
- Bokpoort I CSP (Operational)
- Bokpoort II PV Cluster (Authorised)
- Marang Solar PV (Authorised)
- Solafrica Sand Draai PV (Authorised)
- Prieska Solar Power PV (Authorised)
- Kheis Solar PV Park (Authorised)



Scale: 1:200 000  
Projection: LO19  
Map Ref: Red Sands PV - Cumulative



Sources: Esri, HEF, Ordnance Survey, aster NL, community



# Red Sands PV2 Facility Northern Cape Province

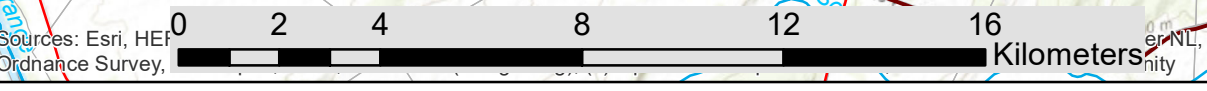
Locality Map

## Legend

- Town
- Eskom Substation
- Railway Line
- Existing Power Line
- National Route
- Regional Road
- Main Road
- Perennial River
- Farm Portion
- Project Site
- Red Sands PV2 Development Area



Scale: 1:160 000  
 Projection: LO19  
 Map Ref: Red Sands PV - Combined Locality



Sources: Esri, HEI  
 Ordnance Survey,