

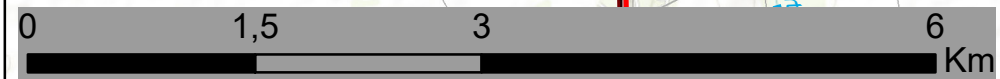
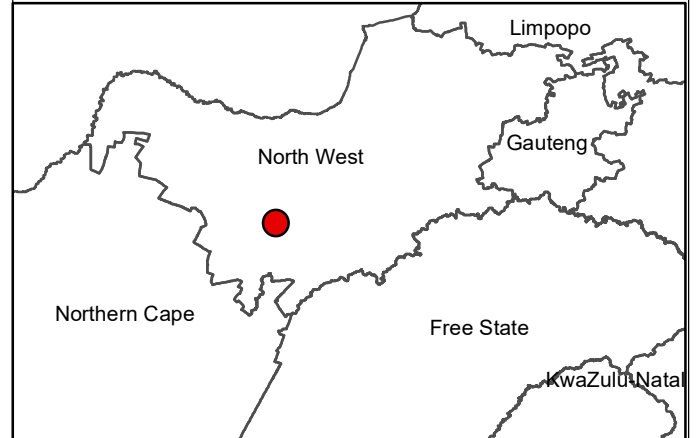
132kV Grid Connection Infrastructure for the Woodhouse PV1 & Woodhouse PV2 Solar Energy Facilities

Locality Map

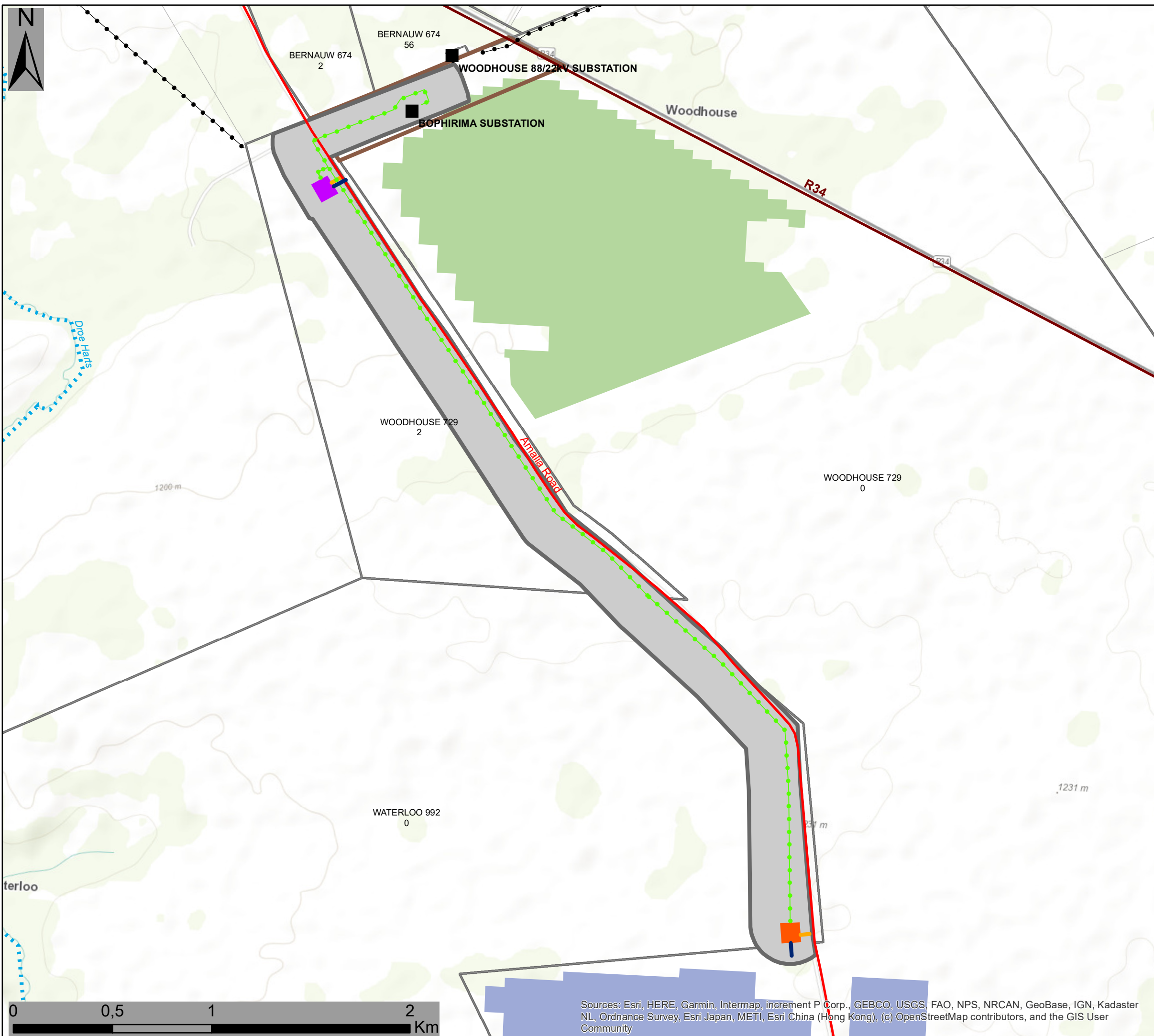
Legend

- Town
- Eskom Substation
- Existing Power Lines
- National Route
- Regional Road
- Main Road
- Non-perennial River
- - - Perennial River
- Eskom Servitude Area
- Switching substation
- Collector Substation Alternative 1
- Collector Substation Alternative 2
- Grid Corridor - Alternative 1 (200m)
- Grid Corridor - Alternative 2 (200m)
- Affected Properties
- Woodhouse PV1 (Authorised Footprint)
- Woodhouse PV2 (Authorised Footprint)
- Farm Portions

Scale: 50 000
 Projection: LO19
 Map Ref: Grid Locality Map



Sources: Esri, HERE, Garmin, Intermap, increment P Corp., GEBCO, USGS, FAO, NPS, NRCAN, GeoBase, IGN, Kadaster NL, Ordnance Survey, Esri Japan, METI, Esri China (Hong Kong), (c) OpenStreetMap contributors, and the GIS User Community



132kV Grid Connection Infrastructure for the Woodhouse PV1 & Woodhouse PV2 Solar Energy Facilities

Layout Map
Grid Connection Configuration Alternative 1

Legend

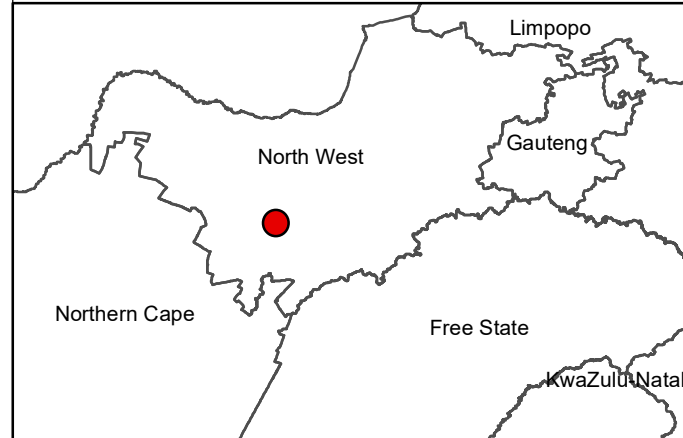
- Eskom Substation
- Existing Power Lines
- National Route
- Regional Road
- Main Road
- Non-perennial River
- Perennial River
- Eskom Servitude Area
- Woodhouse PV1 (Authorised Footprint)
- Woodhouse PV2 (Authorised Footprint)
- Farm Portions

Layout Plan:

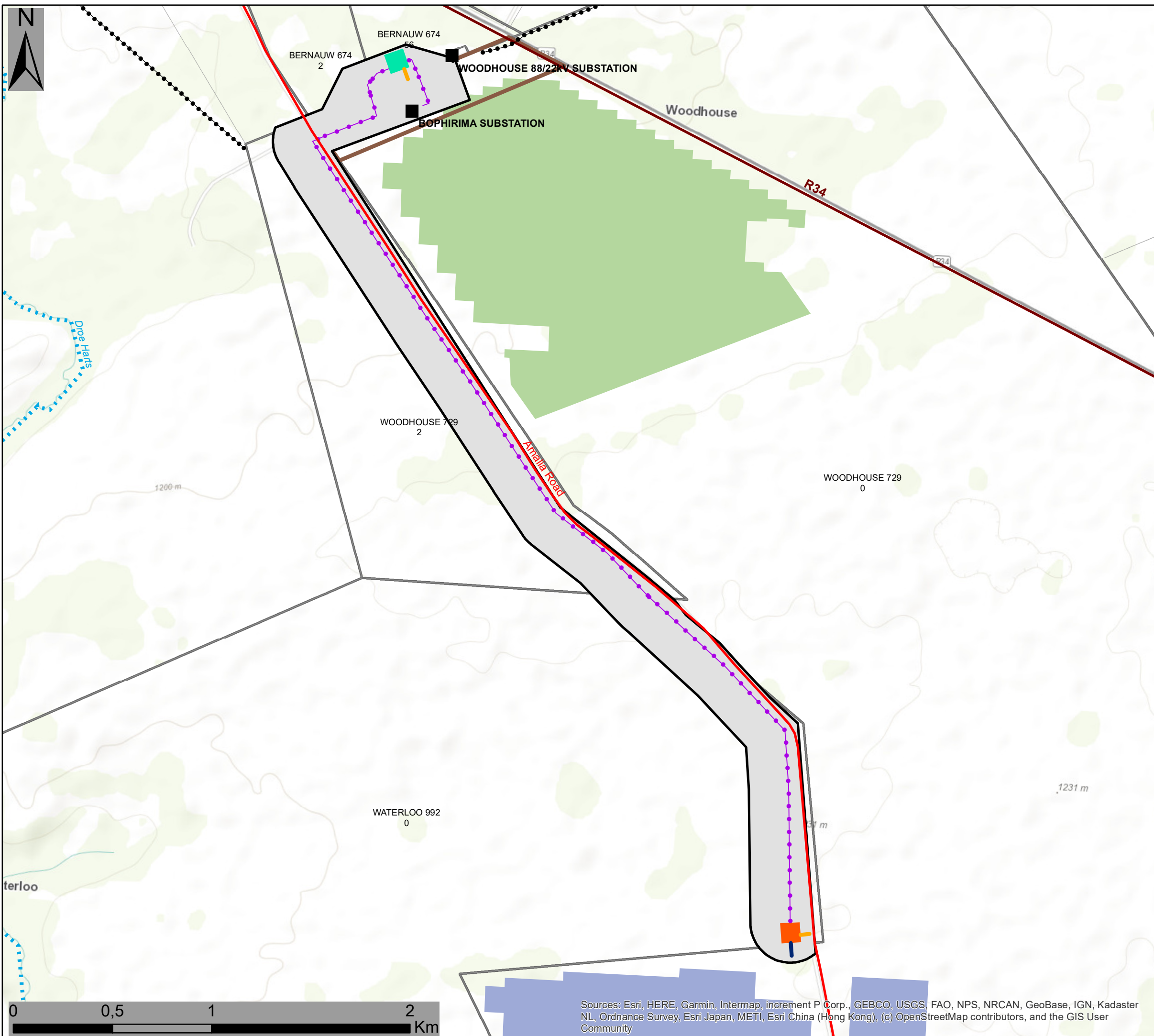
- 33kV Underground Lines
- Access Roads
- 132kV Power Line Route - Alternative 1
- Collector Substation - Alternative 1
- Switching Substation
- Grid Corridor - Alternative 1 (200m)

Environmental Sensitivities:

Scale: 20 000
Projection: LO19
Map Ref: Grid Layout Map - Alt1



Sources: Esri, HERE, Garmin, Intermap, increment P Corp., GEBCO, USGS, FAO, NPS, NRCAN, GeoBase, IGN, Kadaster NL, Ordnance Survey, Esri Japan, METI, Esri China (Hong Kong), (c) OpenStreetMap contributors, and the GIS User Community



**132kV Grid Connection Infrastructure
for the Woodhouse PV1 &
Woodhouse PV2 Solar Energy Facilities**

Layout Map
Grid Connection Configuration Alternative 2

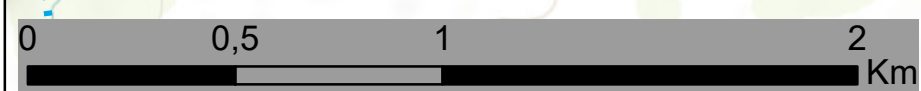
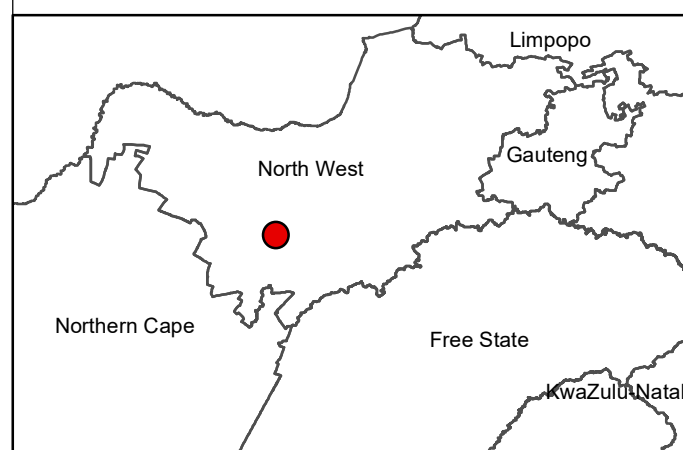
Legend

- Eskom Substation
- Existing Power Lines
- National Route
- Regional Road
- Main Road
- Non-perennial River
- Perennial River
- ▭ Eskom Servitude Area
- ▭ Woodhouse PV1 (Authorised Footprint)
- ▭ Woodhouse PV2 (Authorised Footprint)
- ▭ Farm Portions

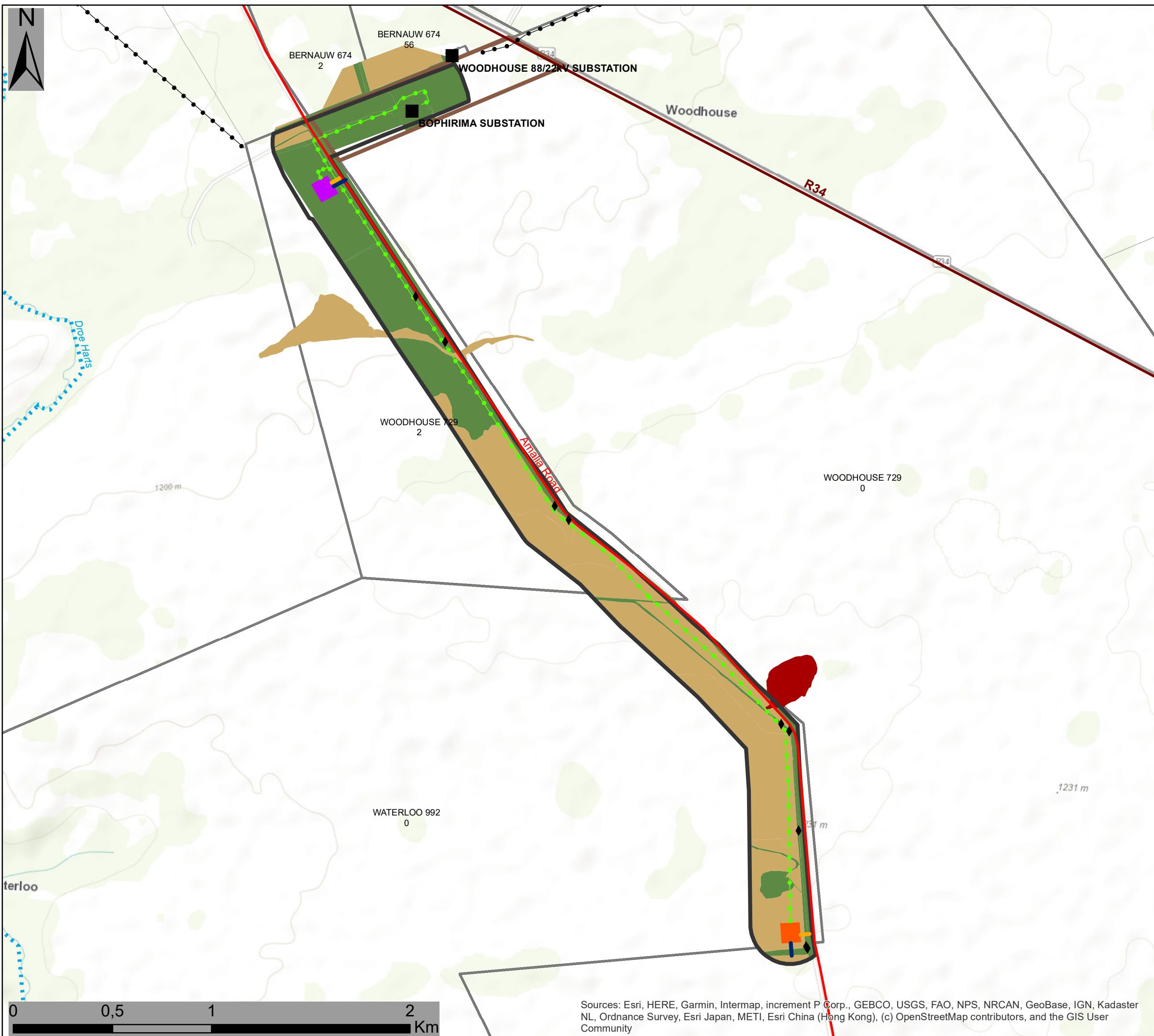
Layout Plan:

- Access Roads
- 33kV Underground Lines
- 132kV Power Line Route - Alternative 2
- Collector Substation - Alternative 2
- Switching Substation
- ▭ Grid Corridor - Alternative 2 (200m)

Scale: 20 000
Projection: LO19
Map Ref: Grid Layout Map Alt 2



Sources: Esri, HERE, Garmin, Intermap, increment P Corp., GEBCO, USGS, FAO, NPS, NRCAN, GeoBase, IGN, Kadaster NL, Ordnance Survey, Esri Japan, METI, Esri China (Hong Kong), (c) OpenStreetMap contributors, and the GIS User Community



132kV Grid Connection Infrastructure for the Woodhouse PV1 & Woodhouse PV2 Solar Energy Facilities

Layout & Sensitivity Map
Grid Connection Configuration Alternative 1

Legend

- Eskom Substation
- Existing Power Lines
- National Route
- Regional Road
- Main Road
- Non-perennial River
- Perennial River
- Eskom Servitude Area
- Farm Portions

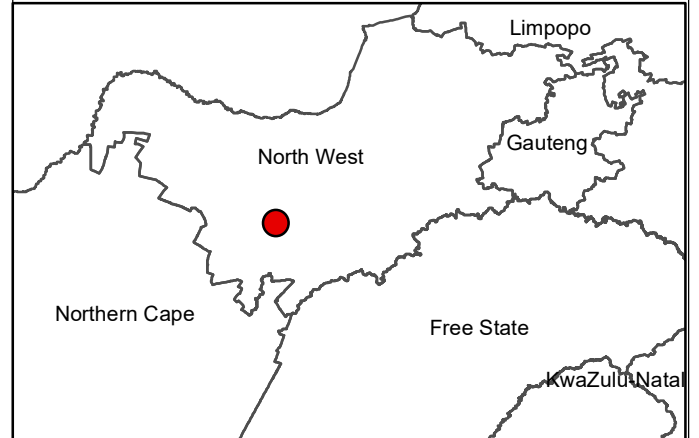
Layout Plan:

- 33kV Underground Lines
- Access Roads
- 132kV Power Line Route - Alternative 1
- Collector Substation - Alternative 1
- Switching Station
- Grid Corridor - Alternative 1 (200m)

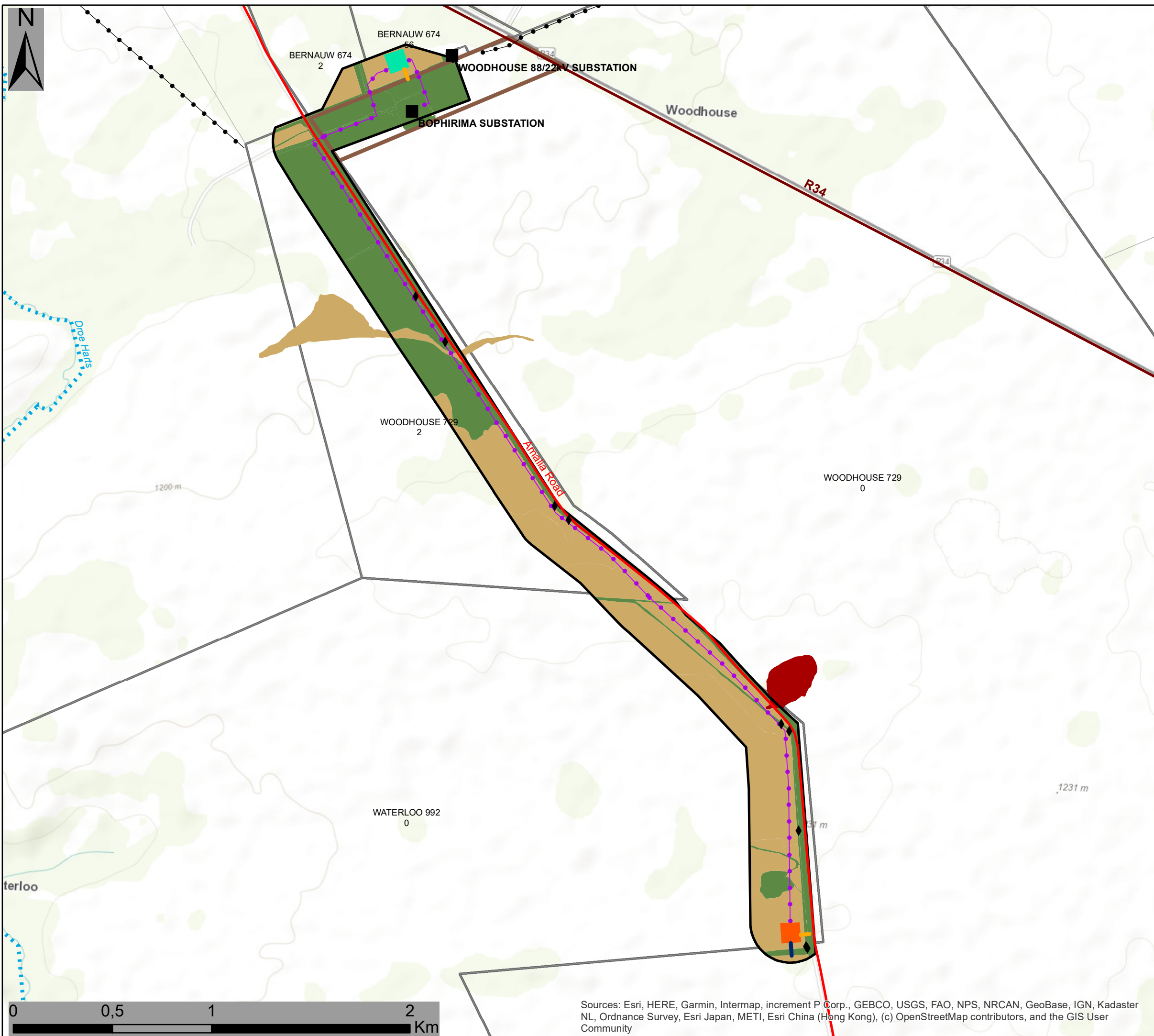
Environmental Sensitivities:

- Heritage Site - Low Sensitivity
- Ecology (flora, fauna, avifauna, wetlands) - High Sensitivity
- Ecology (flora, fauna, avifauna, wetlands) - Medium Sensitivity
- Ecology (flora, fauna, avifauna, wetlands) - Low Sensitivity

Scale: 20 000
Projection: LO19
Map Ref: Grid Sens Map - Alt1



Sources: Esri, HERE, Garmin, Intermap, increment P Corp., GEBCO, USGS, FAO, NPS, NRCAN, GeoBase, IGN, Kadaster NL, Ordnance Survey, Esri Japan, METI, Esri China (Hong Kong), (c) OpenStreetMap contributors, and the GIS User Community



132kV Grid Connection Infrastructure for the Woodhouse PV1 & Woodhouse PV2 Solar Energy Facilities

Layout & Sensitivity Map

Grid Connection Configuration Alternative 2

Legend

- Eskom Substation
- Existing Power Lines
- National Route
- Regional Road
- Main Road
- Non-perennial River
- Perennial River
- Eskom Servitude Area
- Farm Portions

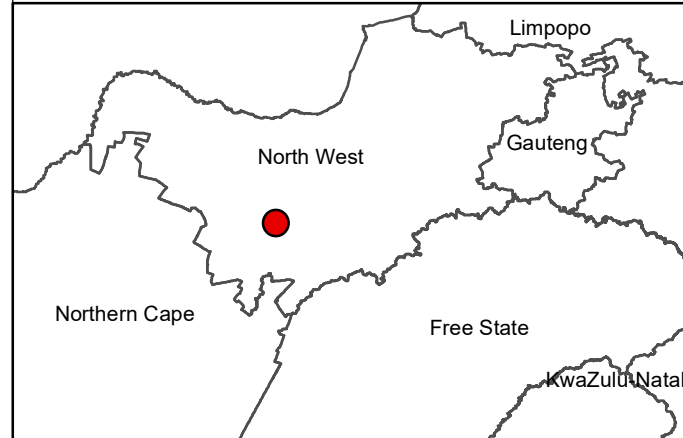
Layout Plan:

- 33kV Underground Lines
- 132kV Power Line Route - Alternative 2
- Collector Substation - Alternative 2
- Switching Substation
- Grid Corridor - Alternative 2 (200m)

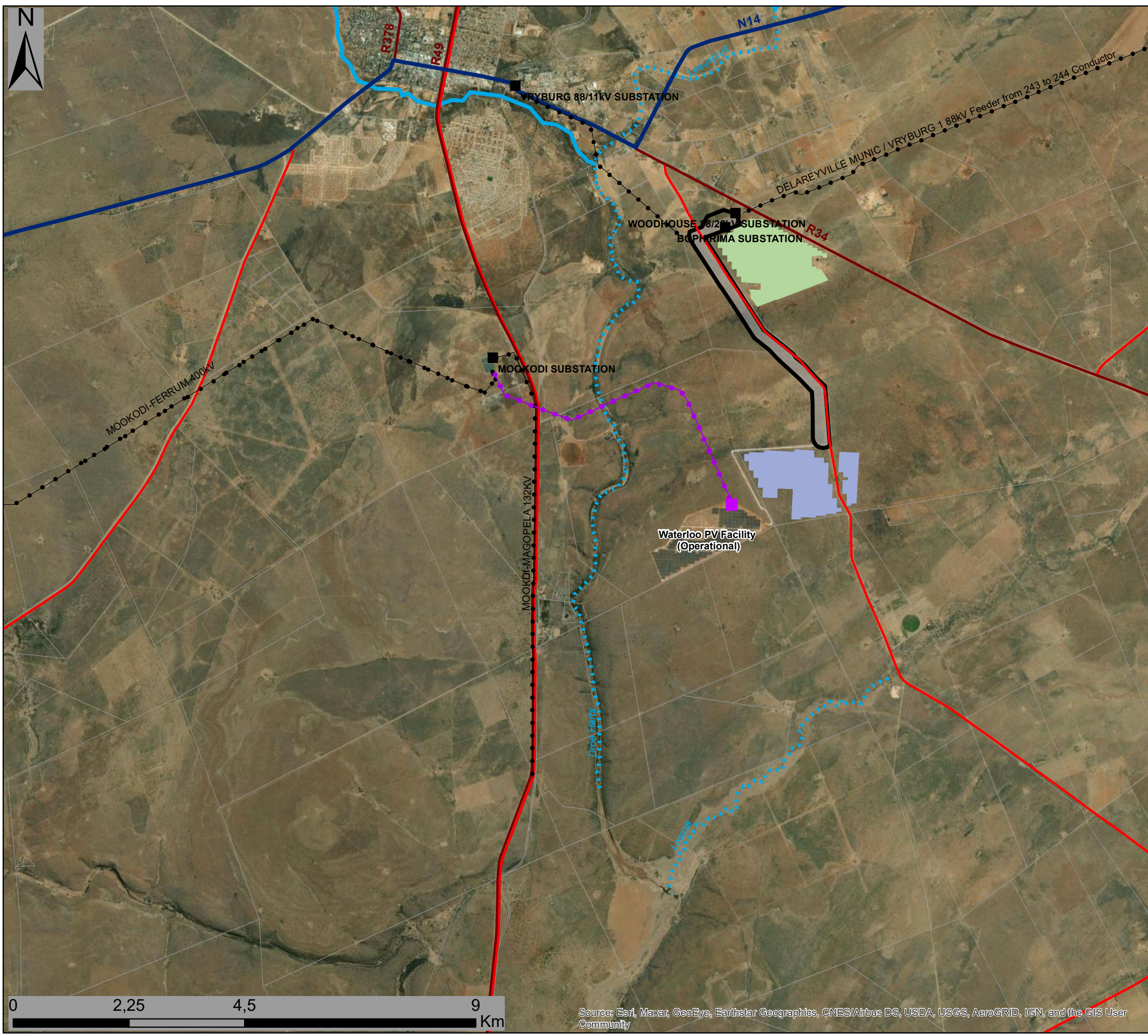
Environmental Sensitivities:

- Heritage Site - Low Sensitivity
- Ecology (flora, fauna, avifauna, wetlands) - High Sensitivity
- Ecology (flora, fauna, avifauna, wetlands) - Medium Sensitivity
- Ecology (flora, fauna, avifauna, wetlands) - Low Sensitivity

Scale: 20 000
 Projection: LO19
 Map Ref: Grid Layout & Sens Map Alt 2



Sources: Esri, HERE, Garmin, Intermap, increment P Corp., GEBCO, USGS, FAO, NPS, NRCAN, GeoBase, IGN, Kadaster NL, Ordnance Survey, Esri Japan, METI, Esri China (Hong Kong), (c) OpenStreetMap contributors, and the GIS User Community

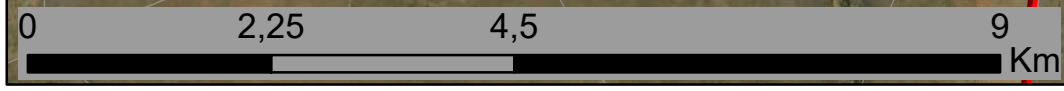
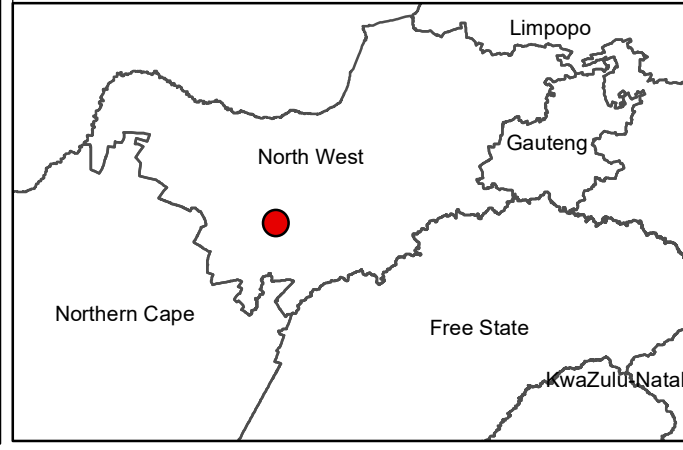


132kV Grid Connection Infrastructure for the Woodhouse PV1 & Woodhouse PV2 Solar Energy Facilities

Cumulative Map

- Legend**
- National Route
 - Regional Road
 - Main Road
 - Non-perennial River
 - ⋯ Perennial River
 - Grid Corridor - Alternative 2 (200m)
 - Grid Corridor - Alternative 1 (200m)
 - Woodhosue PV1 (Authorised Footprint)
 - Woodhouse PV2 (Authorised Footprint)
 - Farm Portions
- Know Grid Connection Infrastructure:**
- Waterloo PV Facility Substation
 - Eskom Substation
 - Existing Power Lines
 - Waterloo - Mookodi 132KV

Scale: 50 000
 Projection: LO19
 Map Ref: Grid cumulative map



Source: Esri, Maxar, GeoEye, Earthstar Geographics, CNES/Airbus DS, USDA, USGS, AeroGRID, IGN, and the GIS User Community