

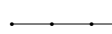












Daisy Solar PV and Facility and Associated Grid Connection, Northern Cape Province

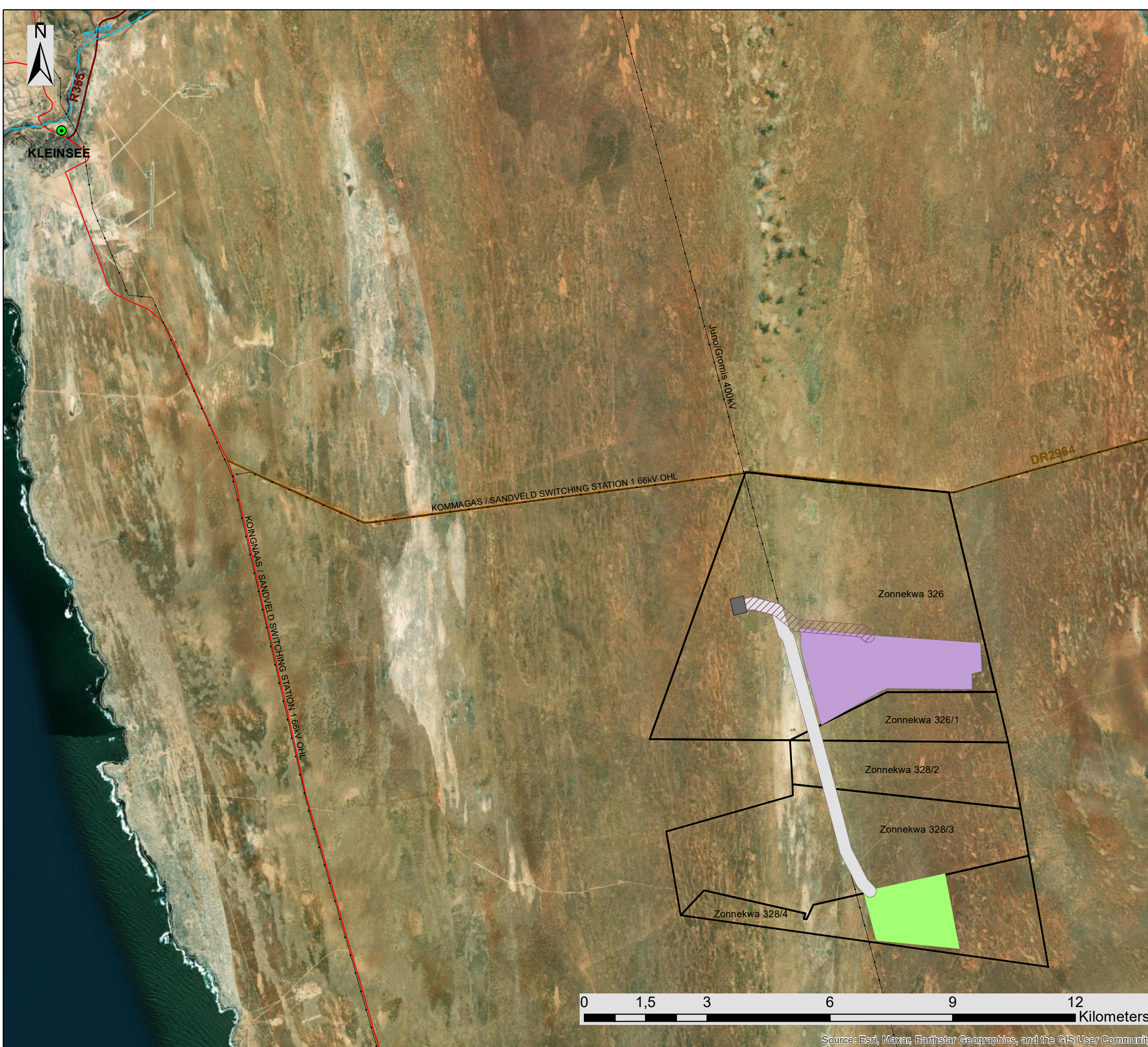
Locality Map

Legend

-  Town
-  Eskom Substation
-  Existing Power Line
-  Regional Road
-  Main Road
-  Secondary Road
-  Non-Perennial River
-  Perennial River
-  Farm Portions
-  Authorised Zonnequa Collector Substation
- Project Development Area**
 -  Daisy Solar PV
 -  Daisy Grid Connection Corridor (300m)
 -  Project Site

Scale: 1:150 000
Projection: GCS_WGS_1984
Map Ref: Locality Map





Kleinsee Solar PV and Daisy Solar PV Facilities and Associated Grid Connection, Northern Cape Province

Locality Map

Legend

- Town
- Eskom Substation
- Existing Power Line
- Regional Road
- Main Road
- Secondary Road
- Non-Perennial River
- Perennial River
- Farm Portions
- Authorised Zonnequa Collector Substation

Project Development Area

- Kleinsee Solar PV
- Kleinsee Grid Connection Corridor (300m)
- Daisy Solar PV
- Daisy Grid Connection Corridor (300m)
- Project Site

Scale: 1:150 000
Projection: GCS_WGS_1984
Map Ref: Locality Map

savannah environmental



DR2964

KOMMAGAS / SANDVELD SWITCHING STATION 1 66kV OHL

Zonnequa Collector
Substation

Zonnekwa 326

Juno-Gromis 400kV

Zonnekwa 326/1

0 0,375 0,75 1,5 2,25 3 Kilometers

Daisy PV Facilitiy and Associated Grid Connection, Northern Cape Province

Layout Map

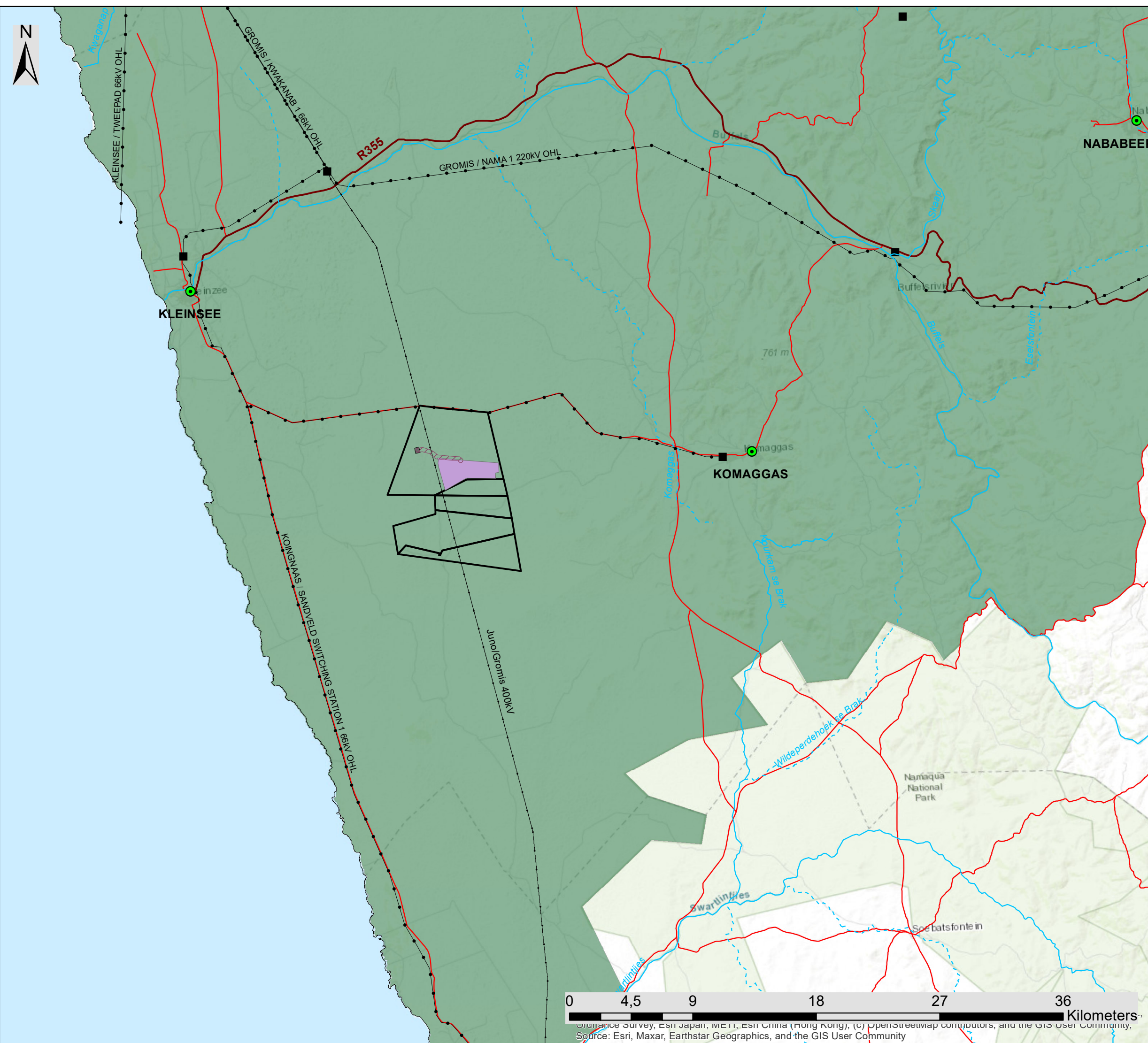
Legend

- Existing Power Line
- Secondary Road
- Authorised Zonnequa Collector Substation
- Farm Portions
- Facility Layout**
- Daisy Solar PV Development Area
- PV Arrays
- Internal Roads
- Associated infrastructure and laydown hub
- BESS
- Daisy Onsite Facility Substation
- O&M
- Existing Main Access Road (8m)
- Planned Access Road (8m)
- Planned 132 kV Grid Connection
- Daisy Grid Connection Corridor (300m)

savannah
environmental

Scale: 1:150 000
Projection: GCS_WGS_1984
Map Ref:Daisy PV facility and Associated
Grid Connection Layout Map





Daisy Solar PV Facilities and Associated Grid Connection, Northern Cape Province

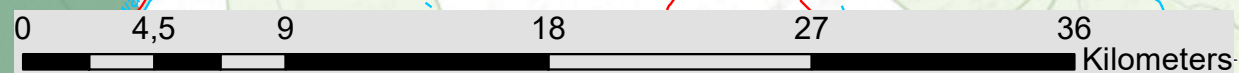
REDZ Map

Legend

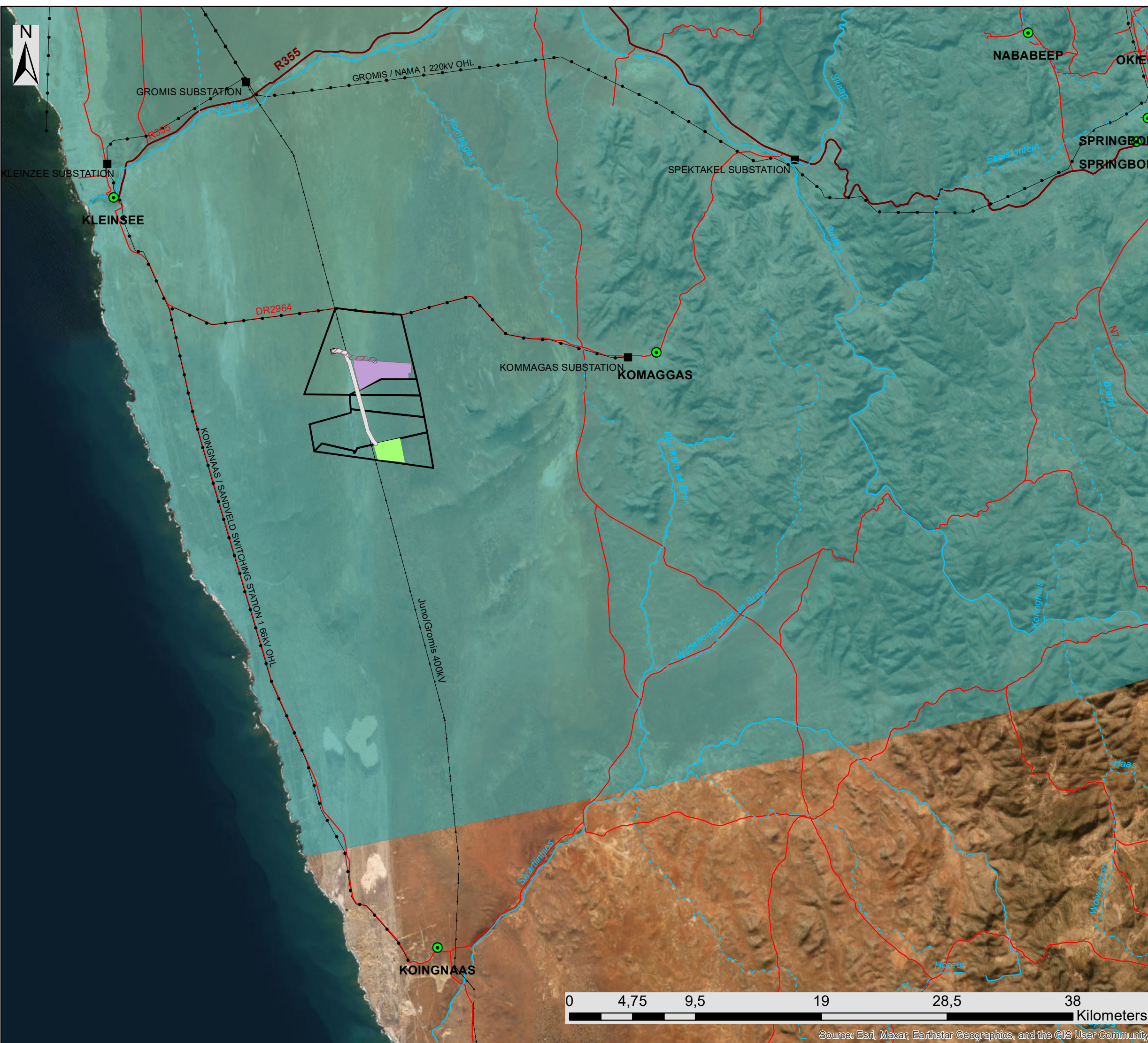
- Town
- Eskom Substation
- Juno/Gromis 400kV
- Existing Power Line
- Regional Road
- Main Road
- Non-Perennial River
- Perennial River
- Farm Portions
- Authorised Zonnequa Collector Substation
- Project Development Area**
 - Daisy Solar PV
 - Daisy Grid connection corridor (300m)
- REDz**
 - Springbok - REDZ8

Scale: 1:150 000
Projection: GCS_WGS_1984
Map Ref: REDZ Map

savannah
environmental



Source: Esri, Maxar, Earthstar Geographics, and the GIS User Community



Daisy Solar PV and Kleinzee Solar PV Facilities and Associated Grid Connection, Northern Cape Province

Strategic Transmission Corridor Map

- ### Legend
- Town
 - Eskom Substation
 - Existing Power Line
 - Regional Road
 - Main Road
 - Non-Perennial River
 - Perennial River
 - Authorised Zonnequa Collector Substation
 - Kleinzee Solar PV Development Area
 - Kleinzee Grid Connection Corridor (300m)
 - Daisy Solar PV Development Area
 - Daisy Grid Connection Corridor (300m)
 - Strategic Transmission Corridor**
 - Northern corridor

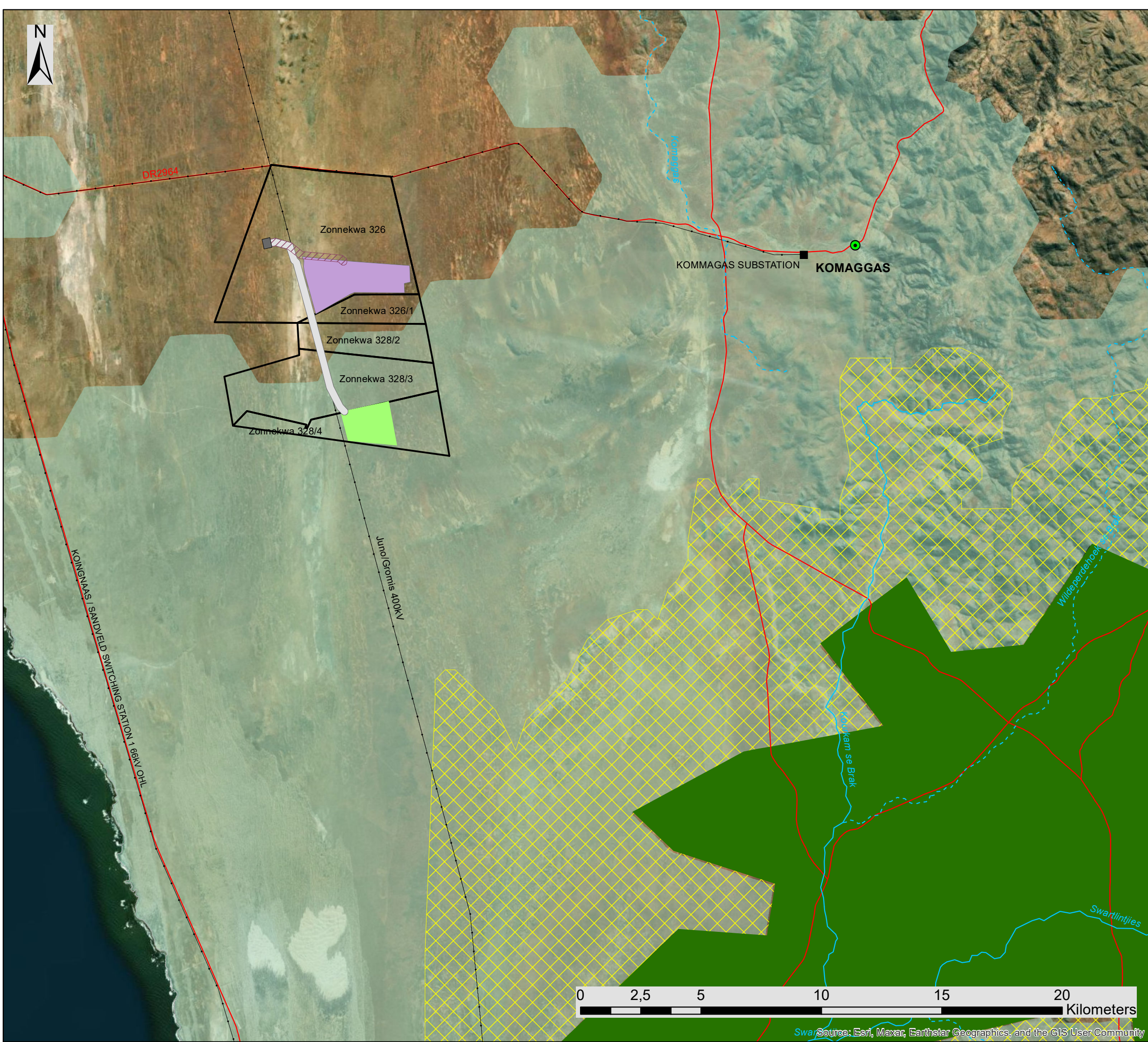
Scale: 1:150 000
Projection: GCS_WGS_1984
Map Ref: Strategic Transmission Corridor Map

savannah
environmental

Northern Cape

0 4,75 9,5 19 28,5 38 Kilometers

Source: Esri, Maxar, Earthstar Geographics, and the GIS User Community



Kleinzee Solar PV and Daisy Solar PV Facilities and Associated Grid Connection, Northern Cape Province

Locality Map

Legend

Town

Eskom Substation

Juno/Gromis 400kV

Existing Power Line

Regional Road

Main Road

Non-Perennial River

Perennial River

Farm Portions

Authorised Zonnequa Collector Substation

Namaqua National Park

Viewshed Protection Zone

Priority Focus Areas (NPAES)

Project Development Area

Kleinzee Solar PV

Kleinzee Grid Connection Corridor (300m)

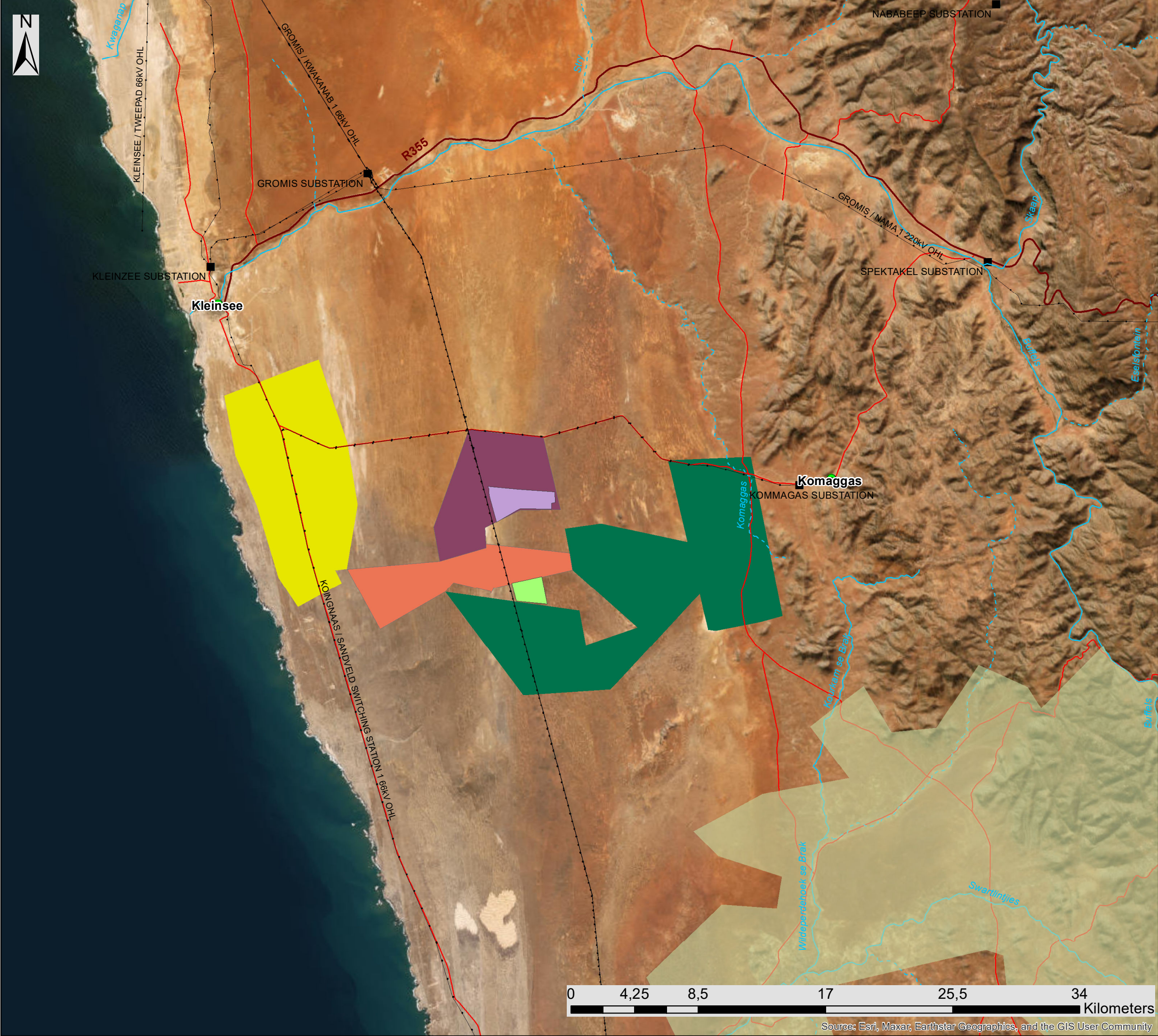
Daisy Solar PV

Daisy Grid Connection Corridor (300m)

Project Site

Scale: 1:150 000
Projection: GCS_WGS_1984
Map Ref: Locality Map

Source: Esri, Maxar, Earthstar Geographics, and the GIS User Community



Daisy Solar PV and Kleinzee Solar PV Facilities And Associated Grid Connection

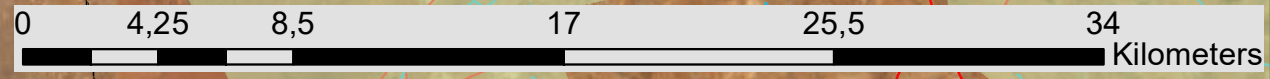
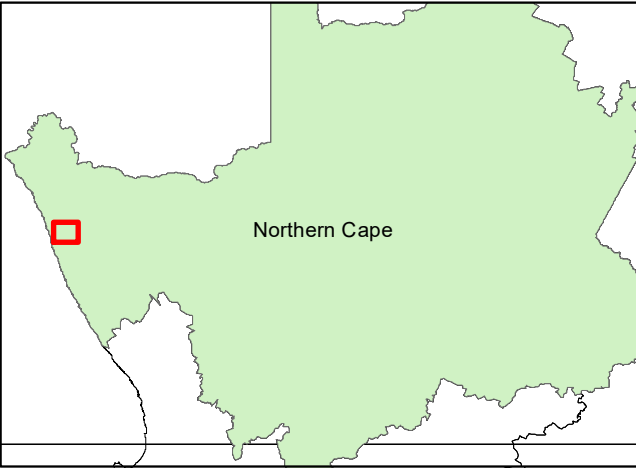
Northern Cape Province

Cumulative Map

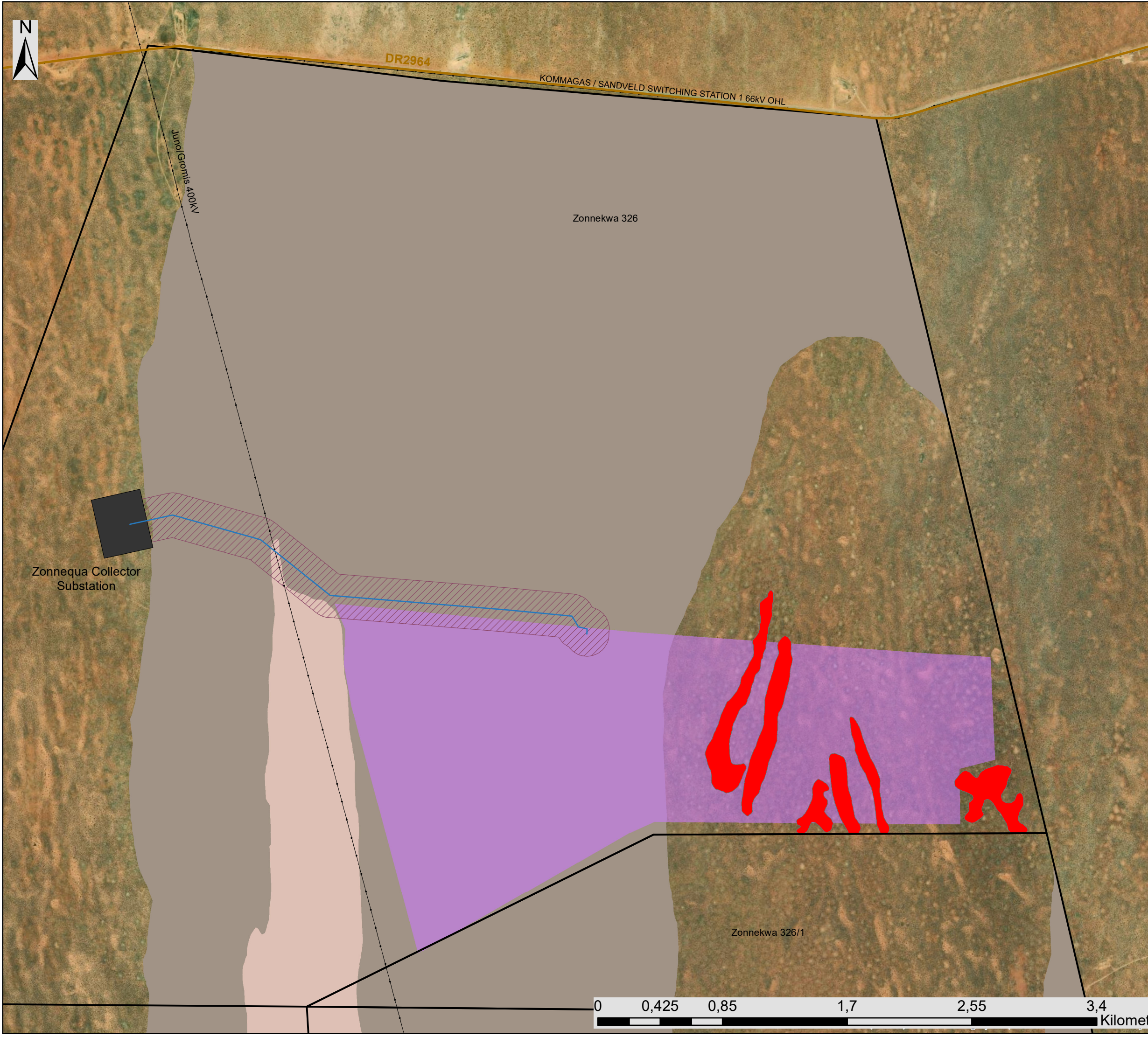
Legend

- Town
 - Eskom Substation
 - Gromis/Juno 400kV Power Line
 - Existing Power Line
 - Regional Road
 - Main Road
 - Non-Perennial River
 - Perennial River
 - Namaqua National Park
 - Kleinzee Solar PV project site
 - Daisy Solar PV project site
- Renewable Energy Facilities**
- Namas Wind Farm
 - Zonnequa Wind Farm
 - Kap Vley Wind Farm
 - Eskom Kleinzee Wind Farm

Scale: 1:150 000
Projection: GCS_WGS_1984
Map Ref: Cumulative Map



Source: Esri, Maxar, Earthstar Geographics, and the GIS User Community



Daisy Solar PV Facility and Associated Grid Connection, Northern Cape Province

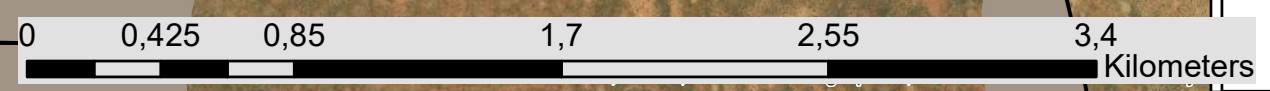
Sensitivity Map

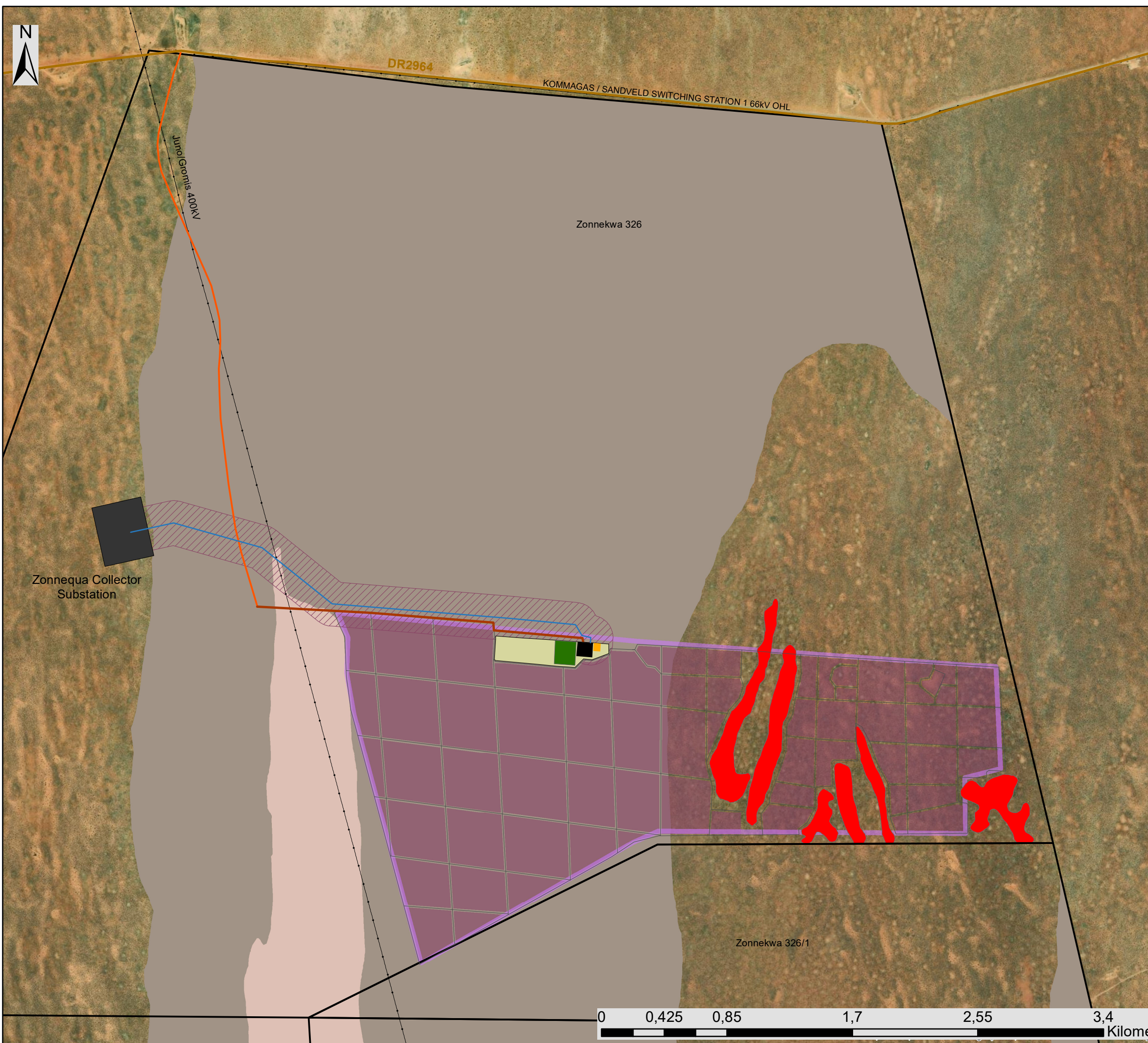
Legend

- Existing Power Line
- Secondary Road
- Authorised Zonnequa Collector Substation
- Farm Portions
- Project Development Area**
 - Daisy Solar PV
 - Planned 132 kV Grid Connection
 - Daisy Grid Connection Corridor (300m)
- Environmental Sensitivities**
 - Dunes (High Ecological Sensitivity)
 - Calcrete (High Sensitivity)
 - Plains (Low Sensitivity)

Zonnequa Collector Substation

Scale: 1:150 000
Projection: GCS_WGS_1984
Map Ref: Sensitivity Map





Daisy Solar PV Facility and Associated Grid Connection, Northern Cape Province

Layout and Sensitivity Map

Legend

- Existing Power Line
- Secondary Road
- Authorised Zonnequa Collector Substation
- Farm Portions
- Project Development Area**
 - Daisy Solar PV
 - PV Arrays
 - Internal Roads
 - Associated infrastructure and laydown hub
 - BESS
 - Daisy Onsite Facility Substation
 - O&M
 - Existing Main Access Road (8m)
 - Planned Access Road (8m)
 - Planned 132 kV Grid Connection
 - Daisy Grid Connection Corridor (300m)
- Environmental Sensitivities**
 - Dunes (High Ecological Sensitivity)
 - Calcrete (High Sensitivity)
 - Plains (Low Sensitivity)

Scale: 1:150 000
Projection: GCS_WGS_1984
Map Ref: Sensitivity Map

