

**SCREENING REPORT FOR AN ENVIRONMENTAL AUTHORIZATION AS  
REQUIRED BY THE 2014 EIA REGULATIONS – PROPOSED SITE  
ENVIRONMENTAL SENSITIVITY**

**EIA Reference number:** TBD

**Project name:** San Solar PV

**Project title:** San Solar PV

**Date screening report generated:** 28/02/2022 21:06:09

**Applicant:** San Solar Energy Facility (Pty) Ltd

**Compiler:** Savannah Environmental

**Compiler signature:**  
.....

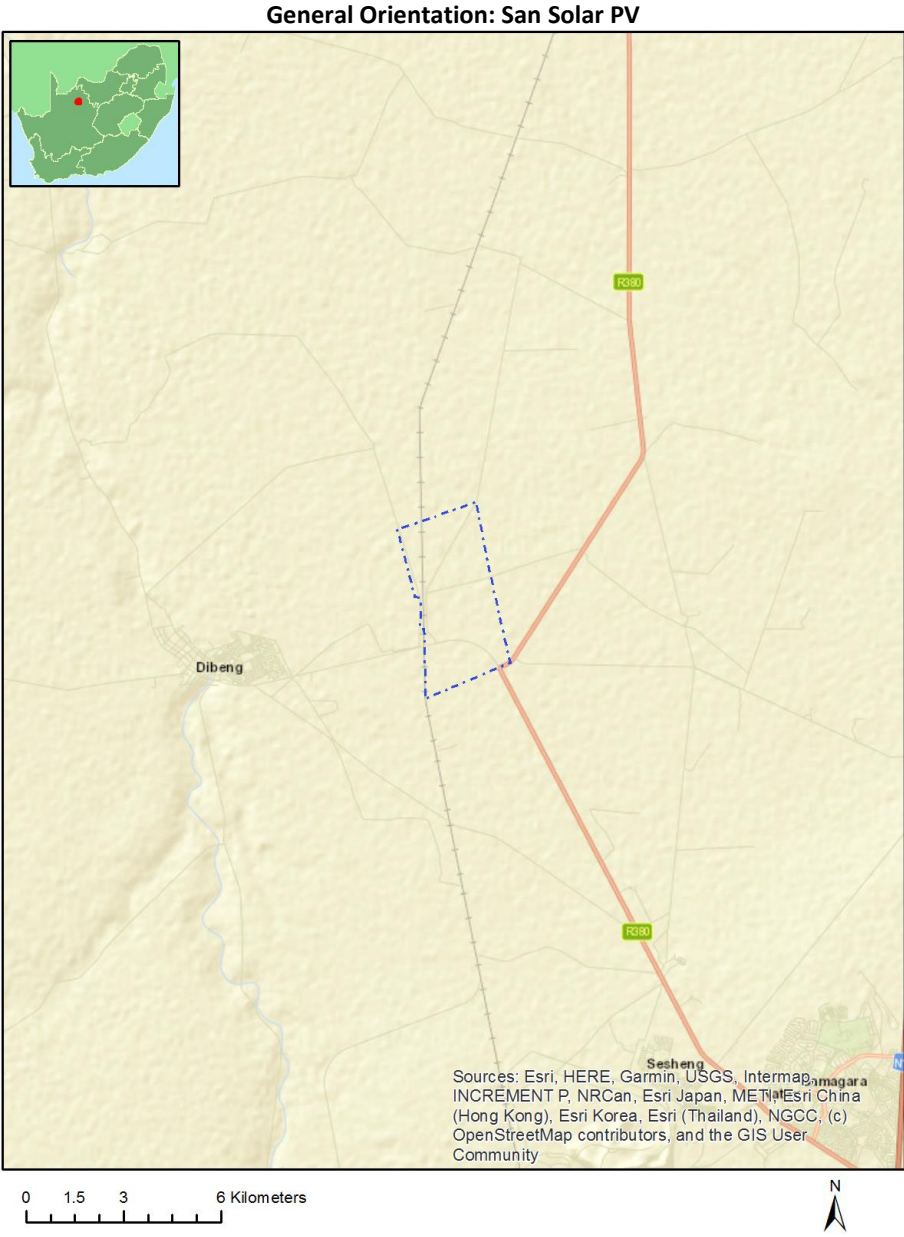
**Application Category:** Utilities Infrastructure|Electricity|Generation|Renewable|Solar|PV

## Table of Contents

Proposed Project Location .....	3
Orientation map 1: General location .....	3
Map of proposed site and relevant area(s) .....	4
Cadastral details of the proposed site .....	4
Wind and Solar developments with an approved Environmental Authorisation or applications under consideration within 30 km of the proposed area .....	4
Environmental Management Frameworks relevant to the application .....	5
Environmental screening results and assessment outcomes .....	5
Relevant development incentives, restrictions, exclusions or prohibitions .....	5
Map indicating proposed development footprint within applicable development incentive, restriction, exclusion or prohibition zones .....	6
Proposed Development Area Environmental Sensitivity .....	6
Specialist assessments identified .....	7
Results of the environmental sensitivity of the proposed area .....	9
MAP OF RELATIVE AGRICULTURE THEME SENSITIVITY .....	9
MAP OF RELATIVE ANIMAL SPECIES THEME SENSITIVITY .....	10
MAP OF RELATIVE AQUATIC BIODIVERSITY THEME SENSITIVITY .....	11
MAP OF RELATIVE ARCHAEOLOGICAL AND CULTURAL HERITAGE THEME SENSITIVITY .....	12
MAP OF RELATIVE AVIAN THEME SENSITIVITY .....	13
MAP OF RELATIVE CIVIL AVIATION (SOLAR PV) THEME SENSITIVITY .....	14
MAP OF RELATIVE DEFENCE THEME SENSITIVITY .....	15
MAP OF RELATIVE PALEONTOLOGY THEME SENSITIVITY .....	16
MAP OF RELATIVE PLANT SPECIES THEME SENSITIVITY .....	17
MAP OF RELATIVE RFI THEME SENSITIVITY .....	18
MAP OF RELATIVE TERRESTRIAL BIODIVERSITY THEME SENSITIVITY .....	19

# Proposed Project Location

Orientation map 1: General location



## Map of proposed site and relevant area(s)



## Cadastral details of the proposed site

Property details:

No	Farm Name	Farm/ Erf No	Portion	Latitude	Longitude	Property Type
1	WINCANTON	472	0	27°35'16.26S	22°55'26.67E	Farm
2	WINCANTON	472	5	27°34'47.86S	22°56'23.93E	Farm Portion
3	WINCANTON	472	0	27°34'40.36S	22°56'54.41E	Farm Portion
4	WINCANTON	472	7	27°34'54.48S	22°56'23.01E	Farm Portion
5	WINCANTON	472	0	27°34'7.69S	22°56'14.09E	Farm Portion
6	WINCANTON	472	8	27°34'55.12S	22°56'26.28E	Farm Portion

Development footprint<sup>1</sup> vertices:  
No development footprint(s) specified.

## Wind and Solar developments with an approved Environmental Authorisation or applications under consideration within 30 km of the proposed area

No	EIA Reference No	Classification	Status of application	Distance from proposed area (km)
1	14/12/16/3/3/2/819/AM2	Solar PV	Approved	22.9
2	12/12/20/1858/2	Solar PV	Approved	0.6

<sup>1</sup> “development footprint”, means the area within the site on which the development will take place and includes all ancillary developments for example roads, power lines, boundary walls, paving etc. which require vegetation clearance or which will be disturbed and for which the application has been submitted.

3	12/12/20/1906	Solar PV	Approved	16.5
4	14/12/16/3/3/2/616	Solar PV	Approved	13.6
5	14/12/16/3/3/2/820	Solar PV	Approved	25.4
6	12/12/20/1994/3	Solar PV	Approved	5.7
7	14/12/16/3/3/2/935	Solar PV	Approved	0
8	14/12/16/3/3/2/1111	Solar PV	Approved	5.4
9	14/12/16/3/3/2/1110	Solar PV	Approved	11.3
10	12/12/20/1994/2	Solar PV	Approved	5.7
11	14/12/16/3/3/2/273	Solar PV	Approved	0.6
12	12/12/20/1858/1	Solar PV	Approved	0.6
13	12/12/20/1994/1	Solar PV	Approved	5.7
14	14/12/16/3/3/2/1109	Solar PV	Approved	10.8
15	14/12/16/3/3/2/911	Solar PV	Approved	24
16	12/12/20/1994	Solar PV	Approved	5.7
17	14/12/16/3/3/2/1082	Solar PV	Approved	19
18	14/12/16/3/3/2/819	Solar PV	Approved	22.9
19	12/12/20/2566	Solar PV	Approved	20.5
20	14/12/16/3/3/2/1112	Solar PV	Approved	11.3
21	12/12/20/1860	Solar PV	Approved	0
22	12/12/20/2567	Solar PV	Approved	20.5

## Environmental Management Frameworks relevant to the application

No intersections with EMF areas found.

## Environmental screening results and assessment outcomes

The following sections contain a summary of any development incentives, restrictions, exclusions or prohibitions that apply to the proposed development site as well as the most environmental sensitive features on the site based on the site sensitivity screening results for the application classification that was selected. The application classification selected for this report is:

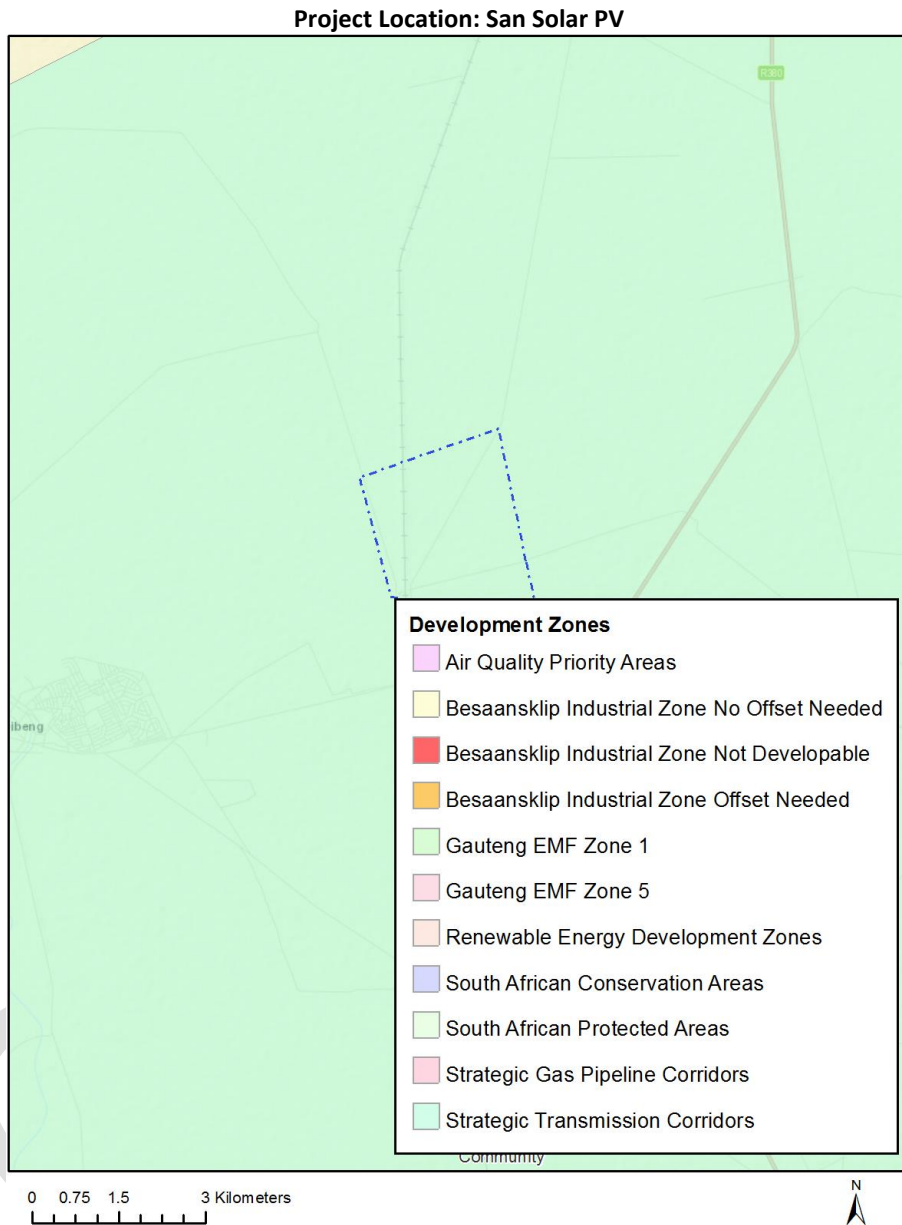
**Utilities Infrastructure | Electricity | Generation | Renewable | Solar | PV.**

## Relevant development incentives, restrictions, exclusions or prohibitions

The following development incentives, restrictions, exclusions or prohibitions and their implications that apply to this site are indicated below.

Incentive, restriction or prohibition	Implication
Strategic Transmission Corridor-Northern corridor	<a href="https://screening.environment.gov.za/ScreeningDownloads/DevelopmentZones/Combined_EGI.pdf">https://screening.environment.gov.za/ScreeningDownloads/DevelopmentZones/Combined_EGI.pdf</a>

Map indicating proposed development footprint within applicable development incentive, restriction, exclusion or prohibition zones



**Proposed Development Area Environmental Sensitivity**

The following summary of the development site environmental sensitivities is identified. Only the highest environmental sensitivity is indicated. The footprint environmental sensitivities for the proposed development footprint as identified, are indicative only and must be verified on site by a suitably qualified person before the specialist assessments identified below can be confirmed.

Theme	Very High sensitivity	High sensitivity	Medium sensitivity	Low sensitivity
Agriculture Theme			X	
Animal Species Theme			X	

Aquatic Biodiversity Theme	X			
Archaeological and Cultural Heritage Theme	X			
Avian Theme				X
Civil Aviation (Solar PV) Theme			X	
Defence Theme				X
Paleontology Theme		X		
Plant Species Theme				X
RFI Theme				X
Terrestrial Biodiversity Theme	X			

### Specialist assessments identified

Based on the selected classification, and the environmental sensitivities of the proposed development footprint, the following list of specialist assessments have been identified for inclusion in the assessment report. It is the responsibility of the EAP to confirm this list and to motivate in the assessment report, the reason for not including any of the identified specialist study including the provision of photographic evidence of the site situation.

<b>N</b>	<b>Specialist assessment</b>	<b>Assessment Protocol</b>
1	Agricultural Impact Assessment	<a href="https://screening.environment.gov.za/ScreeningDownloads/AssessmentProtocols/Gazetted_WindAndSolar_Agriculture_Assessment_Protocols.pdf">https://screening.environment.gov.za/ScreeningDownloads/AssessmentProtocols/Gazetted_WindAndSolar_Agriculture_Assessment_Protocols.pdf</a>
2	Landscape/Visual Impact Assessment	<a href="https://screening.environment.gov.za/ScreeningDownloads/AssessmentProtocols/Gazetted_General_Requirement_Assessment_Protocols.pdf">https://screening.environment.gov.za/ScreeningDownloads/AssessmentProtocols/Gazetted_General_Requirement_Assessment_Protocols.pdf</a>
3	Archaeological and Cultural Heritage Impact Assessment	<a href="https://screening.environment.gov.za/ScreeningDownloads/AssessmentProtocols/Gazetted_General_Requirement_Assessment_Protocols.pdf">https://screening.environment.gov.za/ScreeningDownloads/AssessmentProtocols/Gazetted_General_Requirement_Assessment_Protocols.pdf</a>
4	Palaeontology Impact Assessment	<a href="https://screening.environment.gov.za/ScreeningDownloads/AssessmentProtocols/Gazetted_General_Requirement_Assessment_Protocols.pdf">https://screening.environment.gov.za/ScreeningDownloads/AssessmentProtocols/Gazetted_General_Requirement_Assessment_Protocols.pdf</a>
5	Terrestrial Biodiversity Impact Assessment	<a href="https://screening.environment.gov.za/ScreeningDownloads/AssessmentProtocols/Gazetted_Terrestrial_Biodiversity_Assessment_Protocols.pdf">https://screening.environment.gov.za/ScreeningDownloads/AssessmentProtocols/Gazetted_Terrestrial_Biodiversity_Assessment_Protocols.pdf</a>
6	Aquatic Biodiversity Impact Assessment	<a href="https://screening.environment.gov.za/ScreeningDownloads/AssessmentProtocols/Gazetted_Aquatic_Biodiversity_Assessment_Protocols.pdf">https://screening.environment.gov.za/ScreeningDownloads/AssessmentProtocols/Gazetted_Aquatic_Biodiversity_Assessment_Protocols.pdf</a>

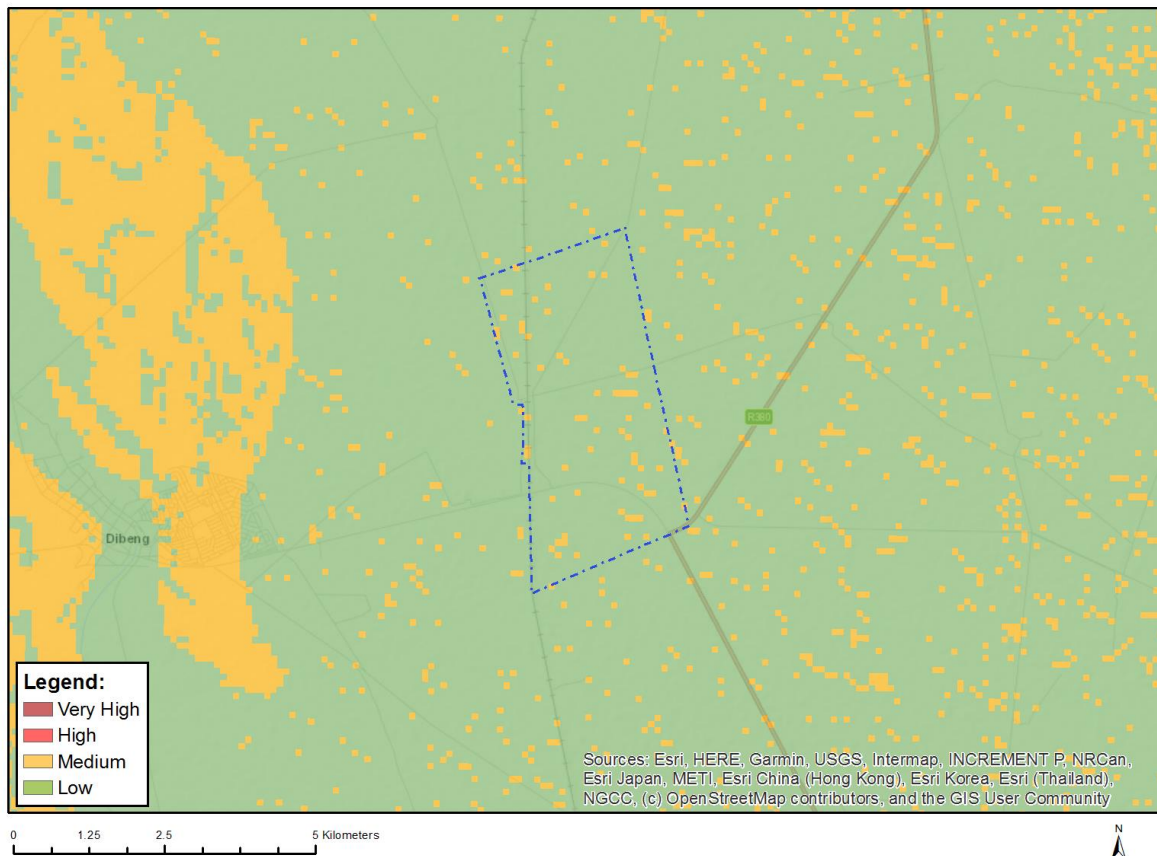
	Assessment	
7	Civil Aviation Assessment	<a href="https://screening.environment.gov.za/ScreeningDownloads/AssessmentProtocols/Gazetted_Civil_Aviation_Installations_Assessment_Protocols.pdf">https://screening.environment.gov.za/ScreeningDownloads/AssessmentProtocols/Gazetted_Civil_Aviation_Installations_Assessment_Protocols.pdf</a>
8	Defense Assessment	<a href="https://screening.environment.gov.za/ScreeningDownloads/AssessmentProtocols/Gazetted_Defence_Installations_Assessment_Protocols.pdf">https://screening.environment.gov.za/ScreeningDownloads/AssessmentProtocols/Gazetted_Defence_Installations_Assessment_Protocols.pdf</a>
9	RFI Assessment	<a href="https://screening.environment.gov.za/ScreeningDownloads/AssessmentProtocols/Gazetted_General_Requirement_Assessment_Protocols.pdf">https://screening.environment.gov.za/ScreeningDownloads/AssessmentProtocols/Gazetted_General_Requirement_Assessment_Protocols.pdf</a>
10	Geotechnical Assessment	<a href="https://screening.environment.gov.za/ScreeningDownloads/AssessmentProtocols/Gazetted_General_Requirement_Assessment_Protocols.pdf">https://screening.environment.gov.za/ScreeningDownloads/AssessmentProtocols/Gazetted_General_Requirement_Assessment_Protocols.pdf</a>
11	Socio-Economic Assessment	<a href="https://screening.environment.gov.za/ScreeningDownloads/AssessmentProtocols/Gazetted_General_Requirement_Assessment_Protocols.pdf">https://screening.environment.gov.za/ScreeningDownloads/AssessmentProtocols/Gazetted_General_Requirement_Assessment_Protocols.pdf</a>
12	Plant Species Assessment	<a href="https://screening.environment.gov.za/ScreeningDownloads/AssessmentProtocols/Gazetted_Plant_Species_Assessment_Protocols.pdf">https://screening.environment.gov.za/ScreeningDownloads/AssessmentProtocols/Gazetted_Plant_Species_Assessment_Protocols.pdf</a>
13	Animal Species Assessment	<a href="https://screening.environment.gov.za/ScreeningDownloads/AssessmentProtocols/Gazetted_Animal_Species_Assessment_Protocols.pdf">https://screening.environment.gov.za/ScreeningDownloads/AssessmentProtocols/Gazetted_Animal_Species_Assessment_Protocols.pdf</a>



## Results of the environmental sensitivity of the proposed area.

The following section represents the results of the screening for environmental sensitivity of the proposed site for relevant environmental themes associated with the project classification. It is the duty of the EAP to ensure that the environmental themes provided by the screening tool are comprehensive and complete for the project. Refer to the disclaimer.

### MAP OF RELATIVE AGRICULTURE THEME SENSITIVITY

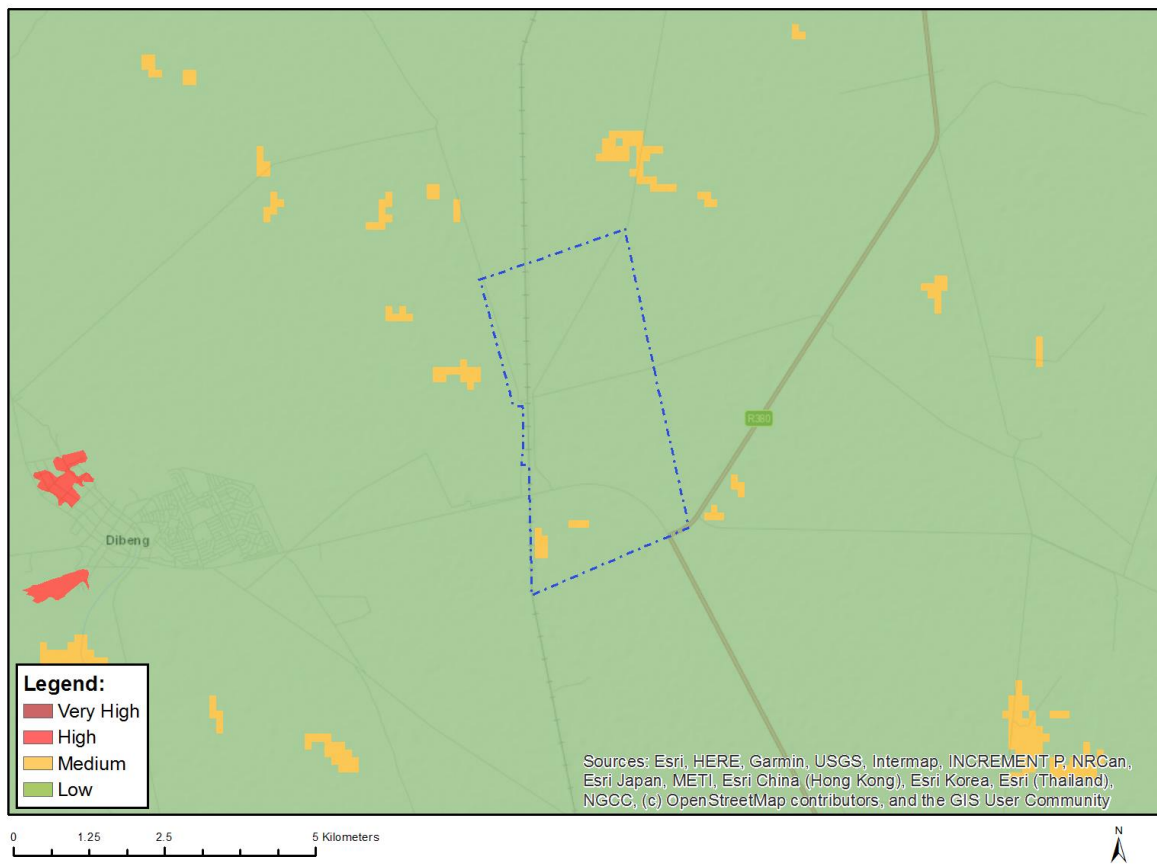


Very High sensitivity	High sensitivity	Medium sensitivity	Low sensitivity
		X	

#### Sensitivity Features:

Sensitivity	Feature(s)
Low	Land capability;01. Very low/02. Very low/03. Low-Very low/04. Low-Very low/05. Low
Medium	Land capability;06. Low-Moderate/07. Low-Moderate/08. Moderate

## MAP OF RELATIVE ANIMAL SPECIES THEME SENSITIVITY



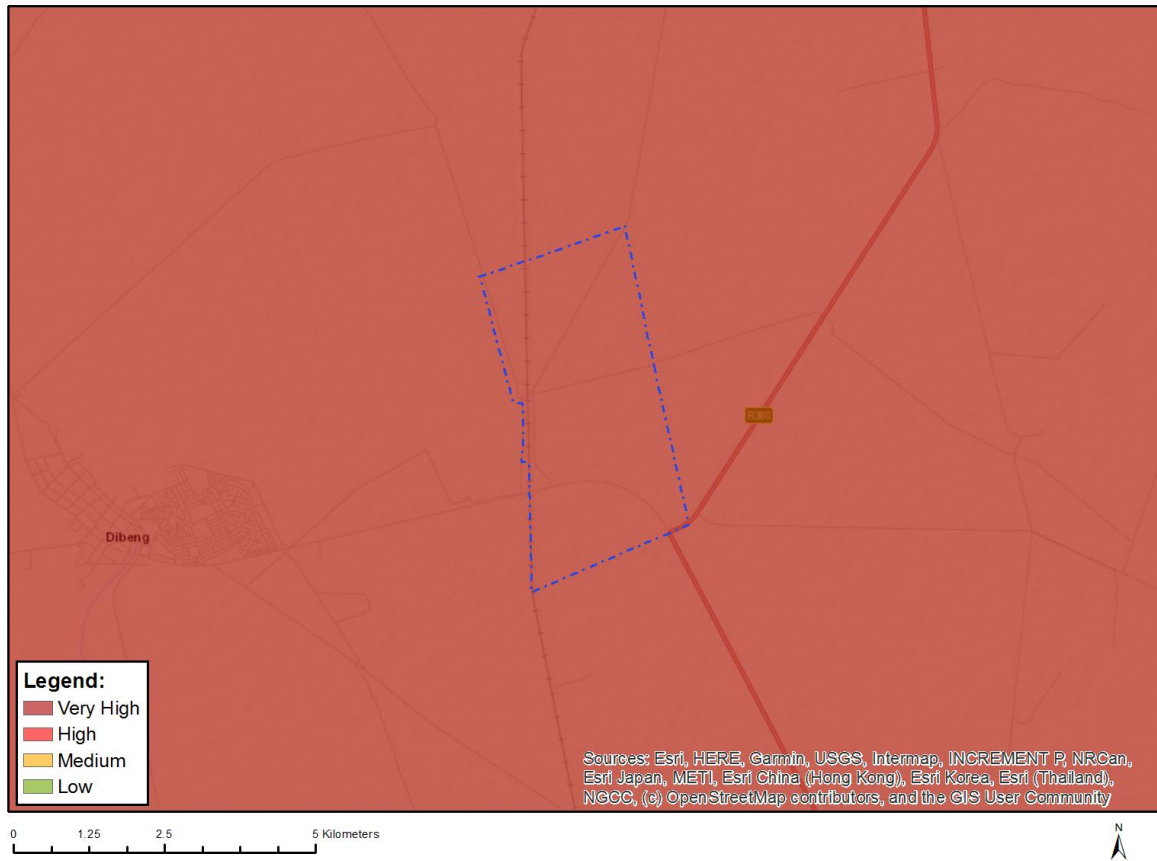
Where only a sensitive plant unique number or sensitive animal unique number is provided in the screening report and an assessment is required, the environmental assessment practitioner (EAP) or specialist is required to email SANBI at [eiadatarequests@sanbi.org.za](mailto:eiadatarequests@sanbi.org.za) listing all sensitive species with their unique identifiers for which information is required. The name has been withheld as the species may be prone to illegal harvesting and must be protected. SANBI will release the actual species name after the details of the EAP or specialist have been documented.

Very High sensitivity	High sensitivity	Medium sensitivity	Low sensitivity
		X	

### Sensitivity Features:

Sensitivity	Feature(s)
Low	Low sensitivity
Medium	Aves-Sagittarius serpentarius

## MAP OF RELATIVE AQUATIC BIODIVERSITY THEME SENSITIVITY

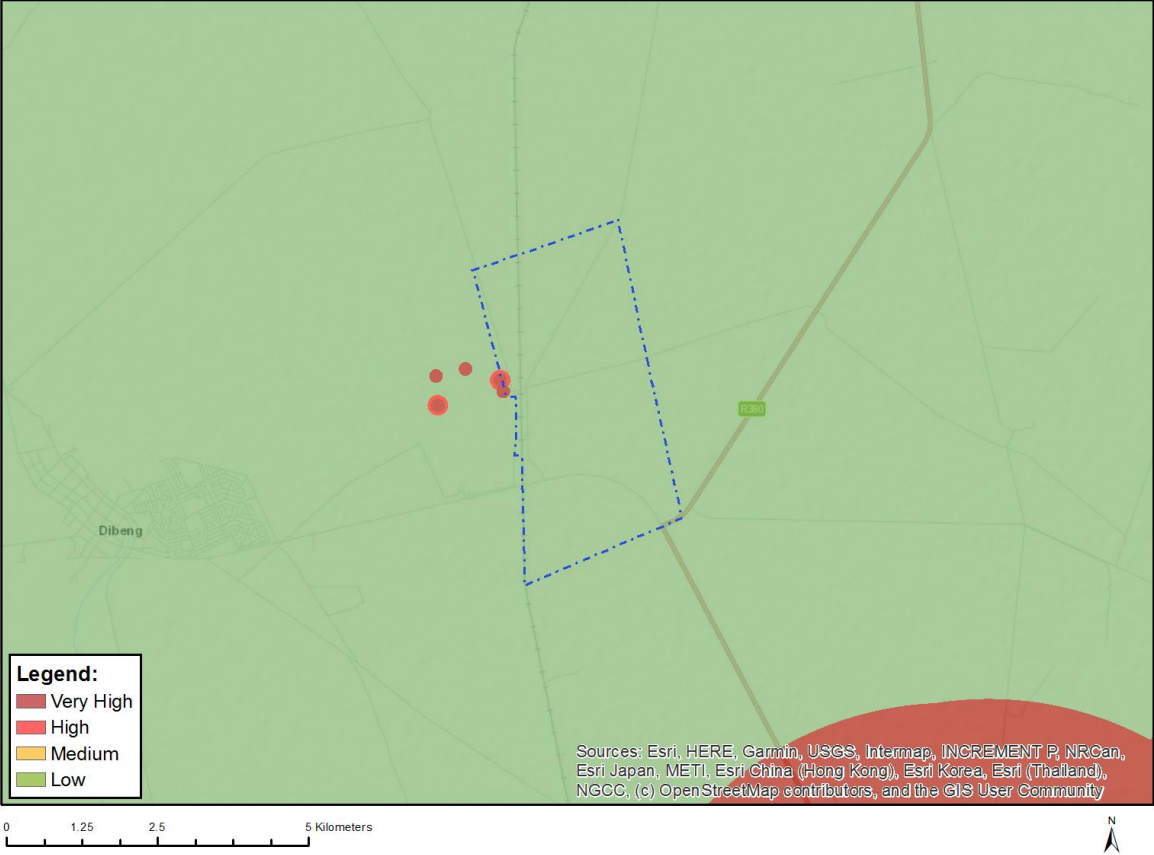


Very High sensitivity	High sensitivity	Medium sensitivity	Low sensitivity
X			

### Sensitivity Features:

Sensitivity	Feature(s)
Very High	Strategic water source area
Very High	Wetlands and Estuaries

# MAP OF RELATIVE ARCHAEOLOGICAL AND CULTURAL HERITAGE THEME SENSITIVITY

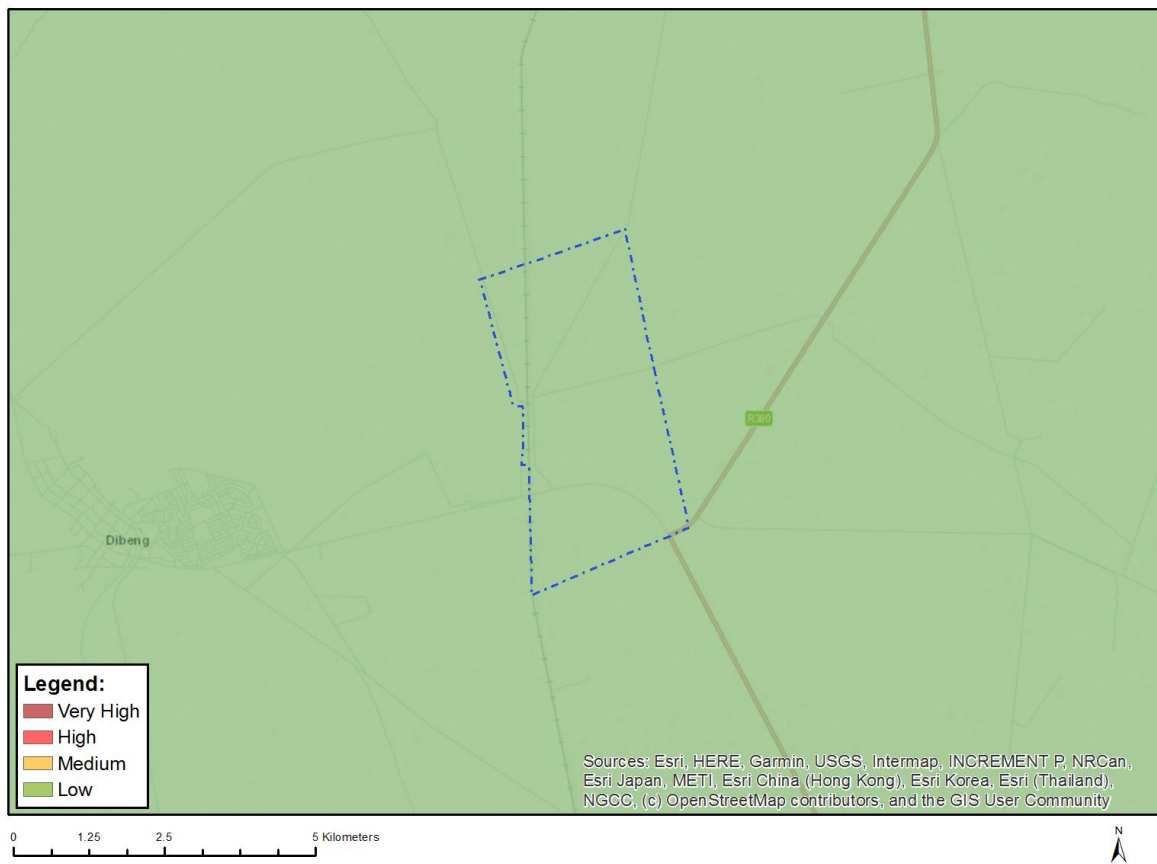


Very High sensitivity	High sensitivity	Medium sensitivity	Low sensitivity
X			

**Sensitivity Features:**

Sensitivity	Feature(s)
High	Within 150m of a Grade IIIa Heritage site
Low	Low sensitivity
Very High	Within 100m of an Ungraded Heritage site

## MAP OF RELATIVE AVIAN THEME SENSITIVITY

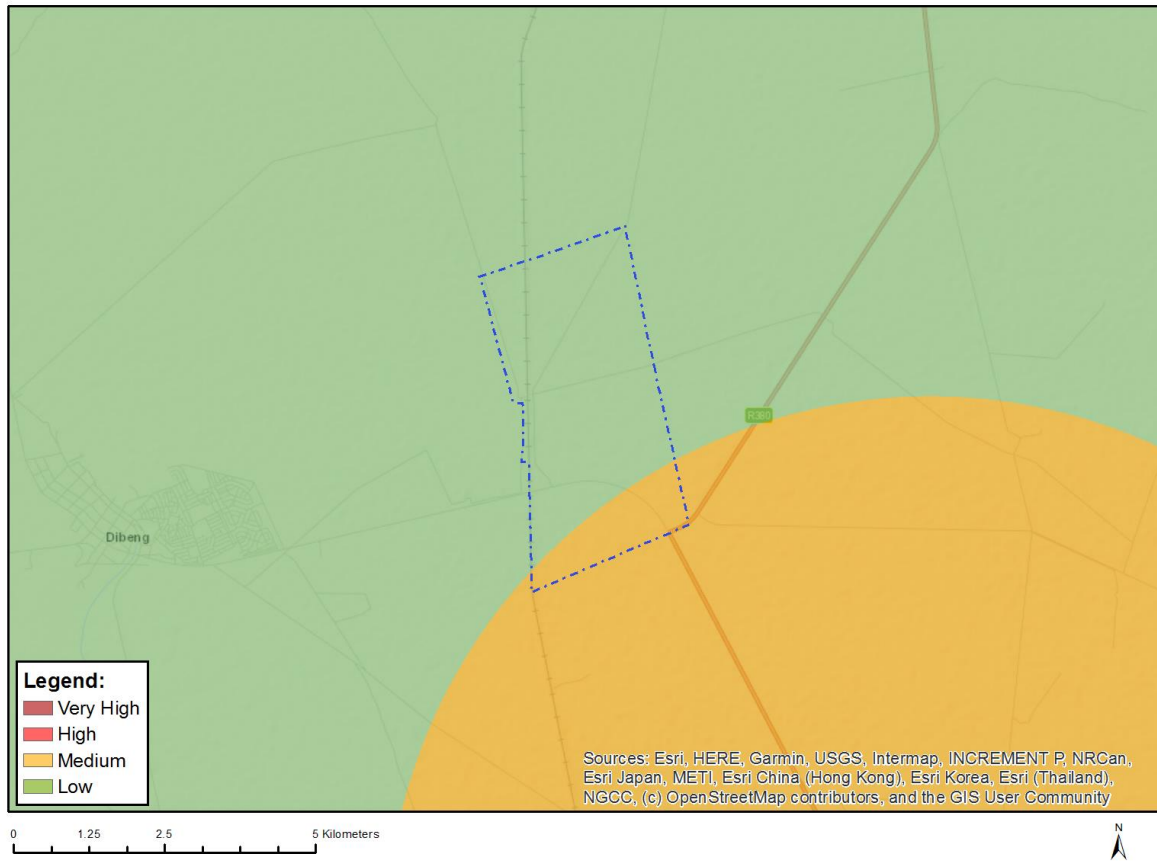


Very High sensitivity	High sensitivity	Medium sensitivity	Low sensitivity
			X

### Sensitivity Features:

Sensitivity	Feature(s)
Low	Low Sensitivity

## MAP OF RELATIVE CIVIL AVIATION (SOLAR PV) THEME SENSITIVITY

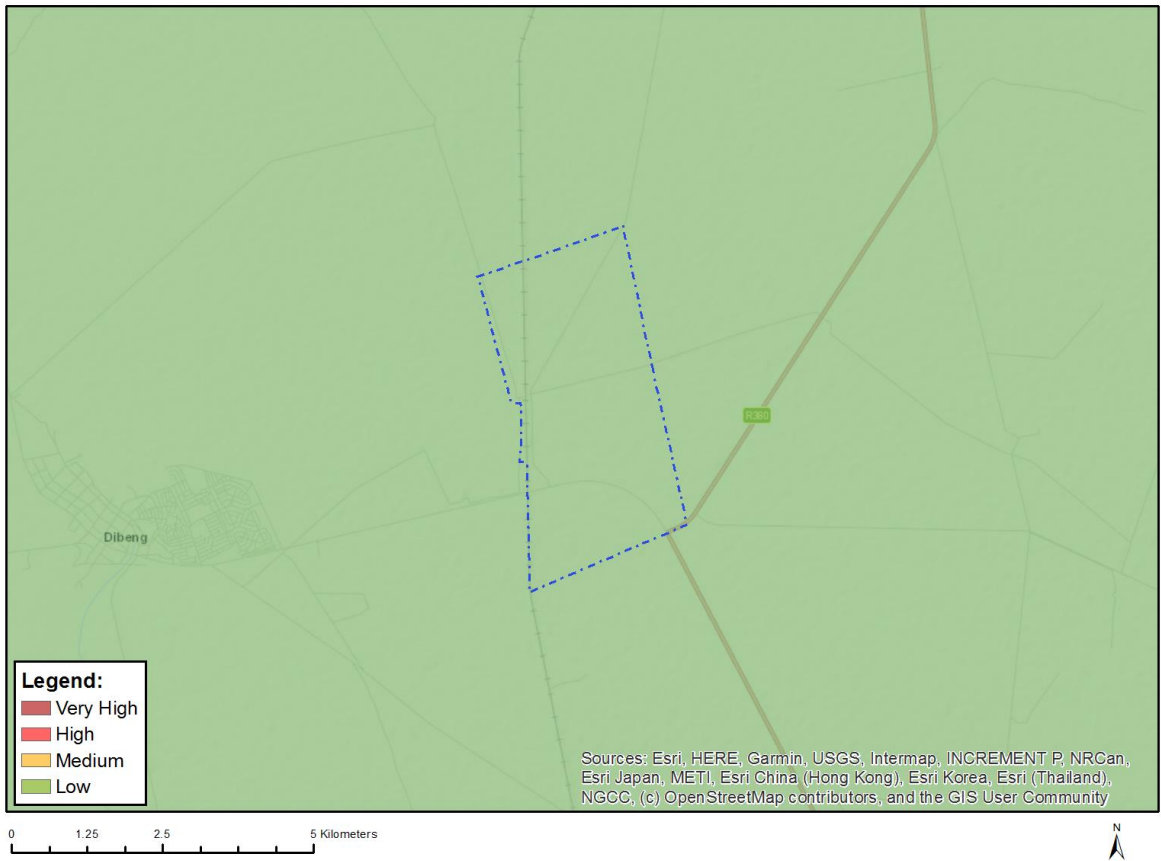


Very High sensitivity	High sensitivity	Medium sensitivity	Low sensitivity
		X	

### Sensitivity Features:

Sensitivity	Feature(s)
Low	No major or other types of civil aviation aerodromes
Medium	Within 8 km of an other civil aviation aerodrome

# MAP OF RELATIVE DEFENCE THEME SENSITIVITY

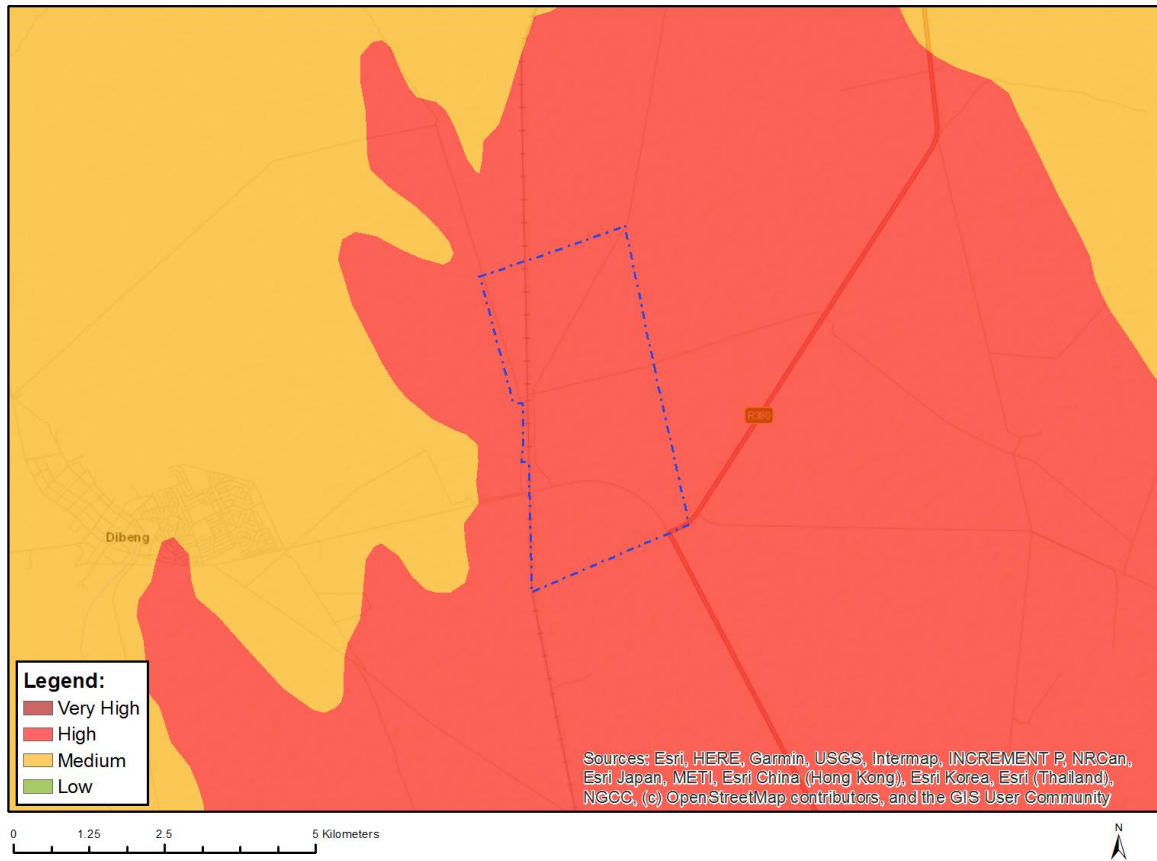


Very High sensitivity	High sensitivity	Medium sensitivity	Low sensitivity
			X

## Sensitivity Features:

Sensitivity	Feature(s)
Low	Low sensitivity

## MAP OF RELATIVE PALEONTOLOGY THEME SENSITIVITY



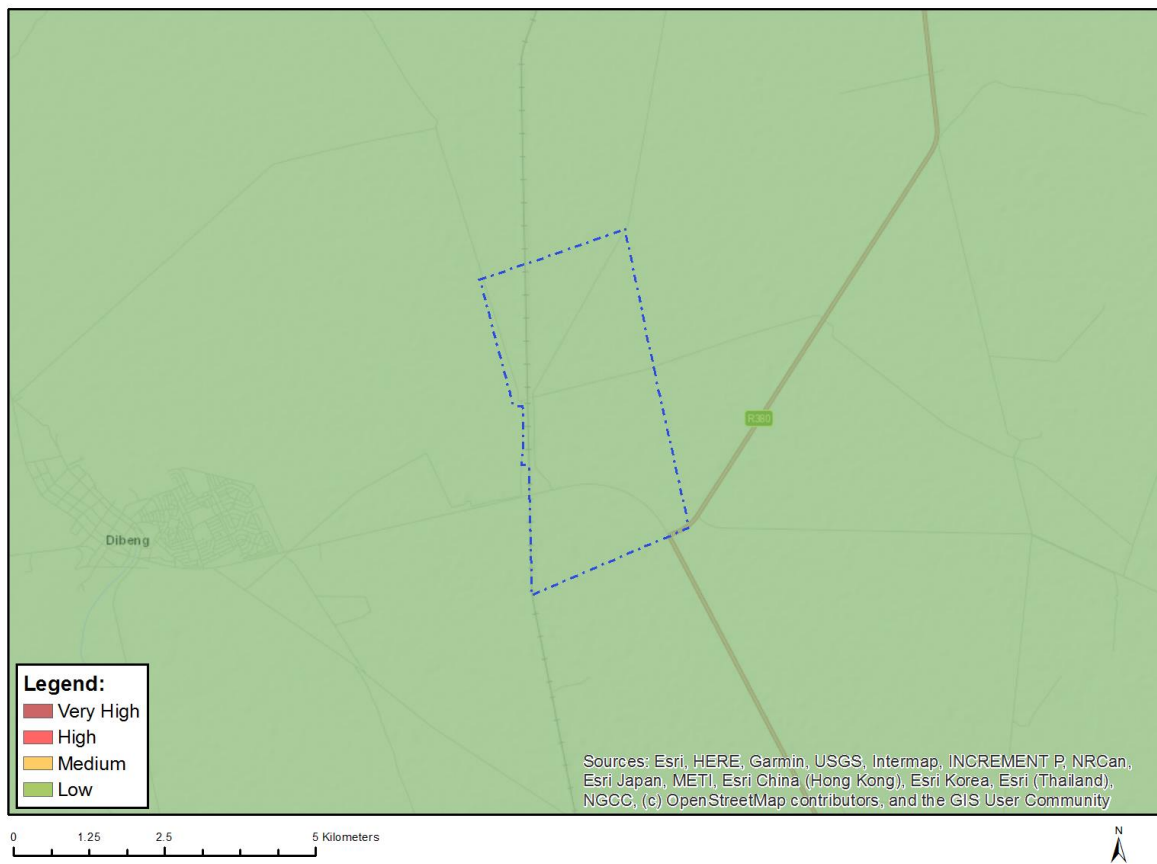
Very High sensitivity	High sensitivity	Medium sensitivity	Low sensitivity
	X		

### Sensitivity Features:

Sensitivity	Feature(s)
High	Features with a High paleontological sensitivity



## MAP OF RELATIVE PLANT SPECIES THEME SENSITIVITY



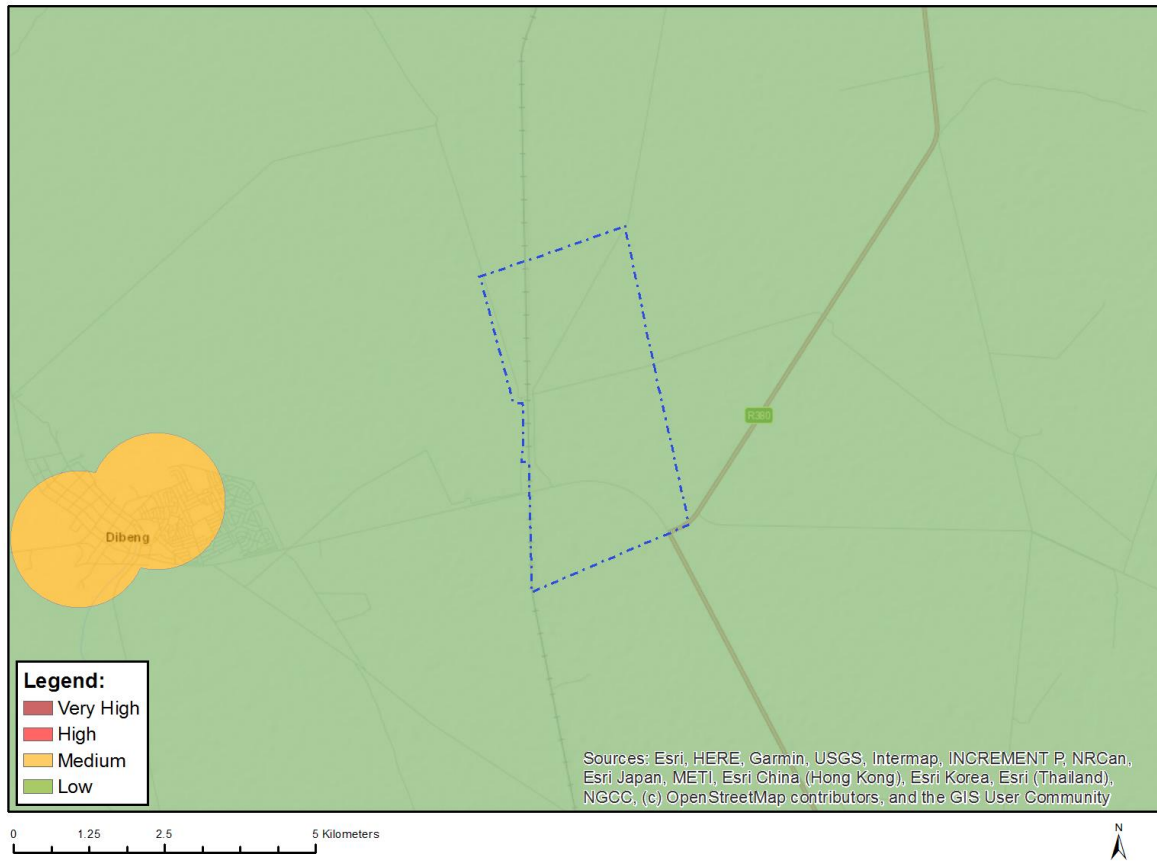
Where only a sensitive plant unique number or sensitive animal unique number is provided in the screening report and an assessment is required, the environmental assessment practitioner (EAP) or specialist is required to email SANBI at [eiadatarequests@sanbi.org.za](mailto:eiadatarequests@sanbi.org.za) listing all sensitive species with their unique identifiers for which information is required. The name has been withheld as the species may be prone to illegal harvesting and must be protected. SANBI will release the actual species name after the details of the EAP or specialist have been documented.

Very High sensitivity	High sensitivity	Medium sensitivity	Low sensitivity
			X

### Sensitivity Features:

Sensitivity	Feature(s)
Low	Low Sensitivity

## MAP OF RELATIVE RFI THEME SENSITIVITY



Very High sensitivity	High sensitivity	Medium sensitivity	Low sensitivity
			X

### Sensitivity Features:

Sensitivity	Feature(s)
Low	Low sensitivity

## MAP OF RELATIVE TERRESTRIAL BIODIVERSITY THEME SENSITIVITY



Very High sensitivity	High sensitivity	Medium sensitivity	Low sensitivity
X			

### Sensitivity Features:

Sensitivity	Feature(s)
Low	Low Sensitivity
Very High	Ecological support area