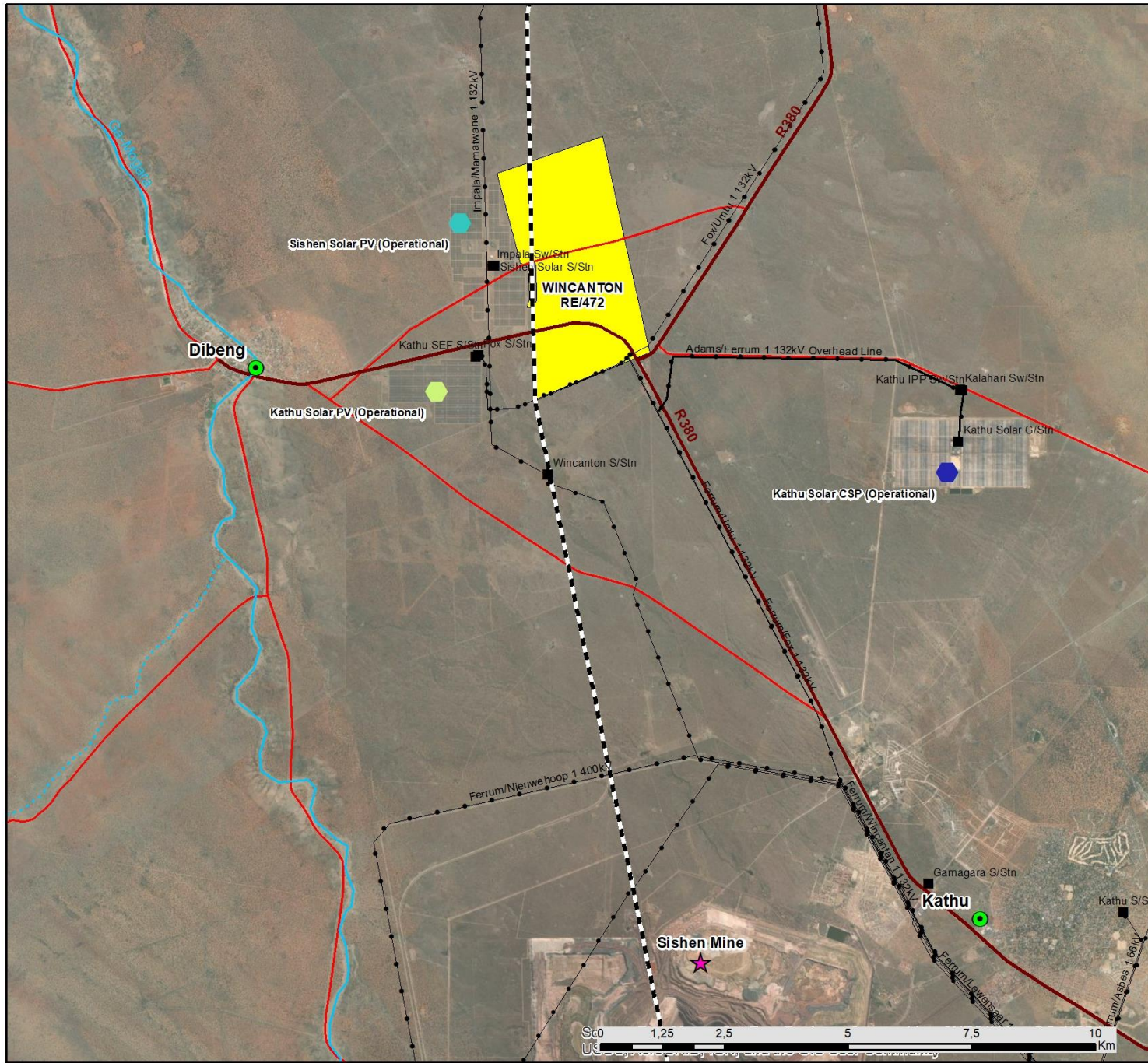


# San Solar PV Facility Northern Cape

## Locality Map

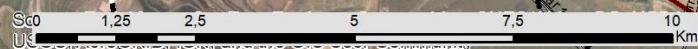
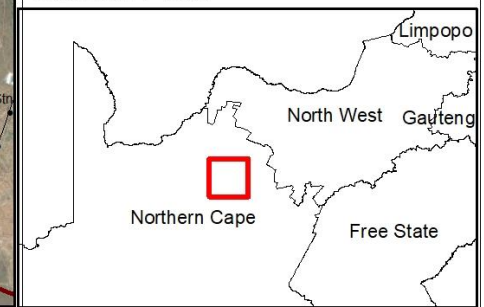
### Legend

-  Town
-  Sishen Mine
-  Existing Substation
-  Kathu Solar CSP (Operational)
-  Kathu Solar PV (Operational)
-  Sishen Solar PV (Operational)
-  Railway Line
-  Existing Power Line
-  Perennial River
-  Non-perennial River
-  Regional Road
-  Main Road
-  Project Site



Scale: 1: 101 000  
 Projection: LO23  
 Ref: San Solar PV - Locality

savannah  
 environmental





# San Solar PV Facility Northern Cape

## Preliminary Sensitivity Map

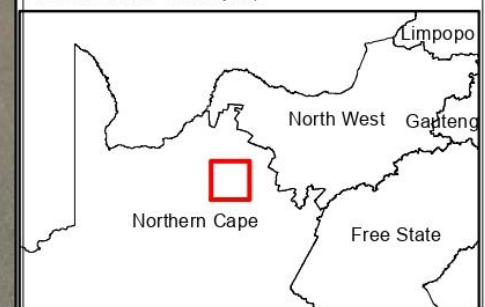
### Legend

- Existing Substation
- - - Railway Line
- Existing Power Line
- Regional Road
- Main Road
- Project Site

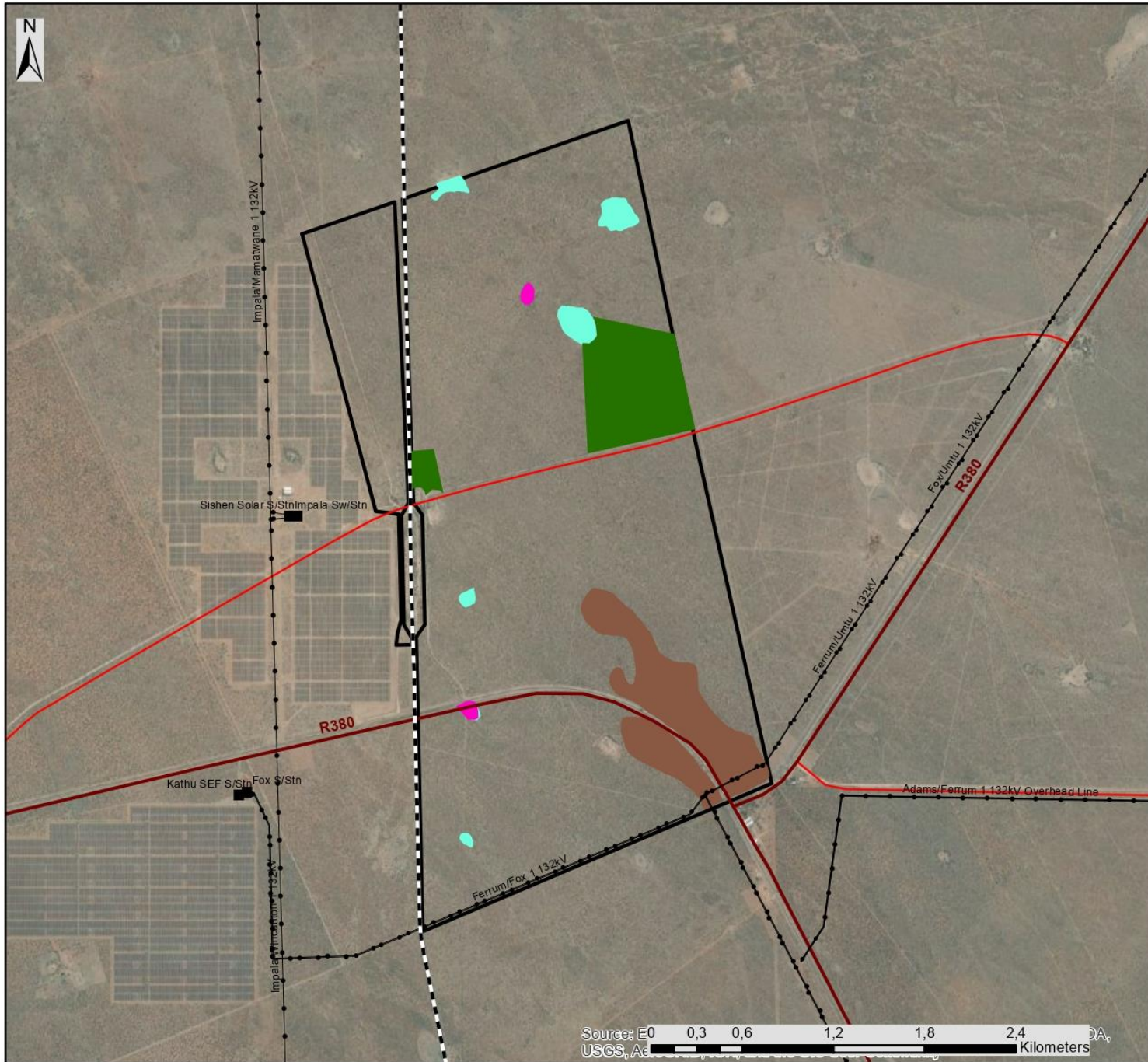
### Preliminary Environmental Features & Sensitivities

- Artificial watering point (High Avifauna Sensitivity)
- Open Kathu Bushveld (High Avifauna Sensitivity)
- Deep Sands (High Ecological Sensitivity)
- Pan (Very High Ecological Sensitivity & High Avifauna Sensitivity)

Scale: 1:35 000  
 Projection: L023  
 Ref: San Solar PV - Sensitivity Map



Source: E0 USGS, Aerial  
 0,3 0,6 1,2 1,8 2,4 Kilometers

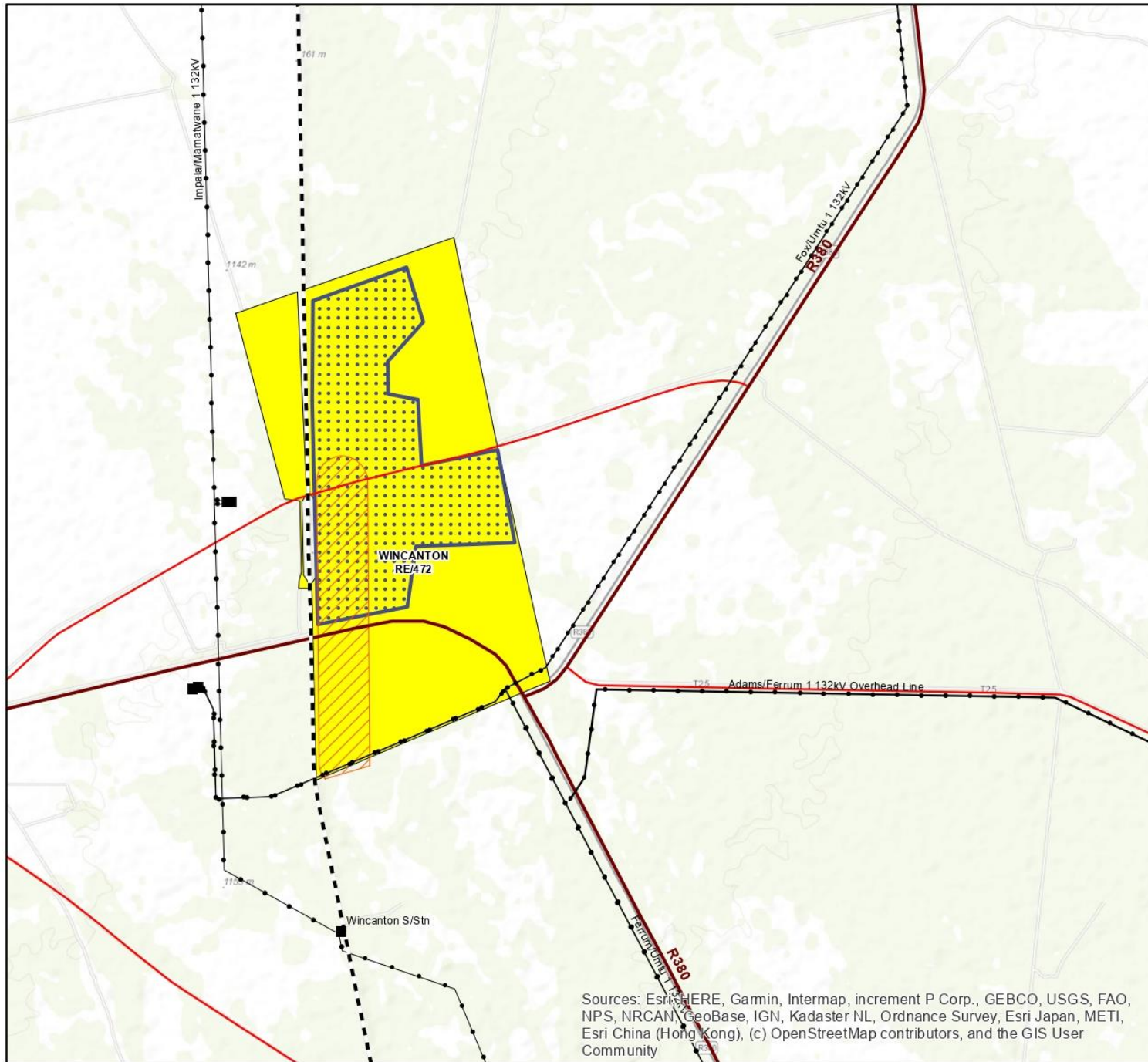


# San Solar PV Facility Northern Cape

## Development Area Map

### Legend

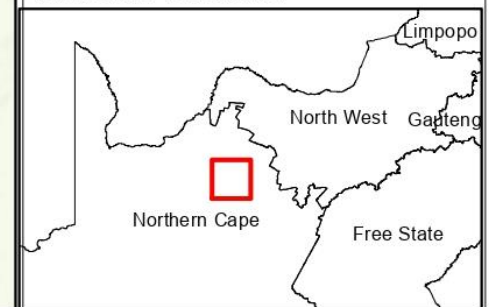
- Existing Substation
- - - Railway Line
- Existing Power Line
- Perennial River
- · - · Non-perennial River
- Regional Road
- Main Road
- Project Site
- ▨ Grid Connection Corridor (500m wide)
- ▤ Development Area (400ha)

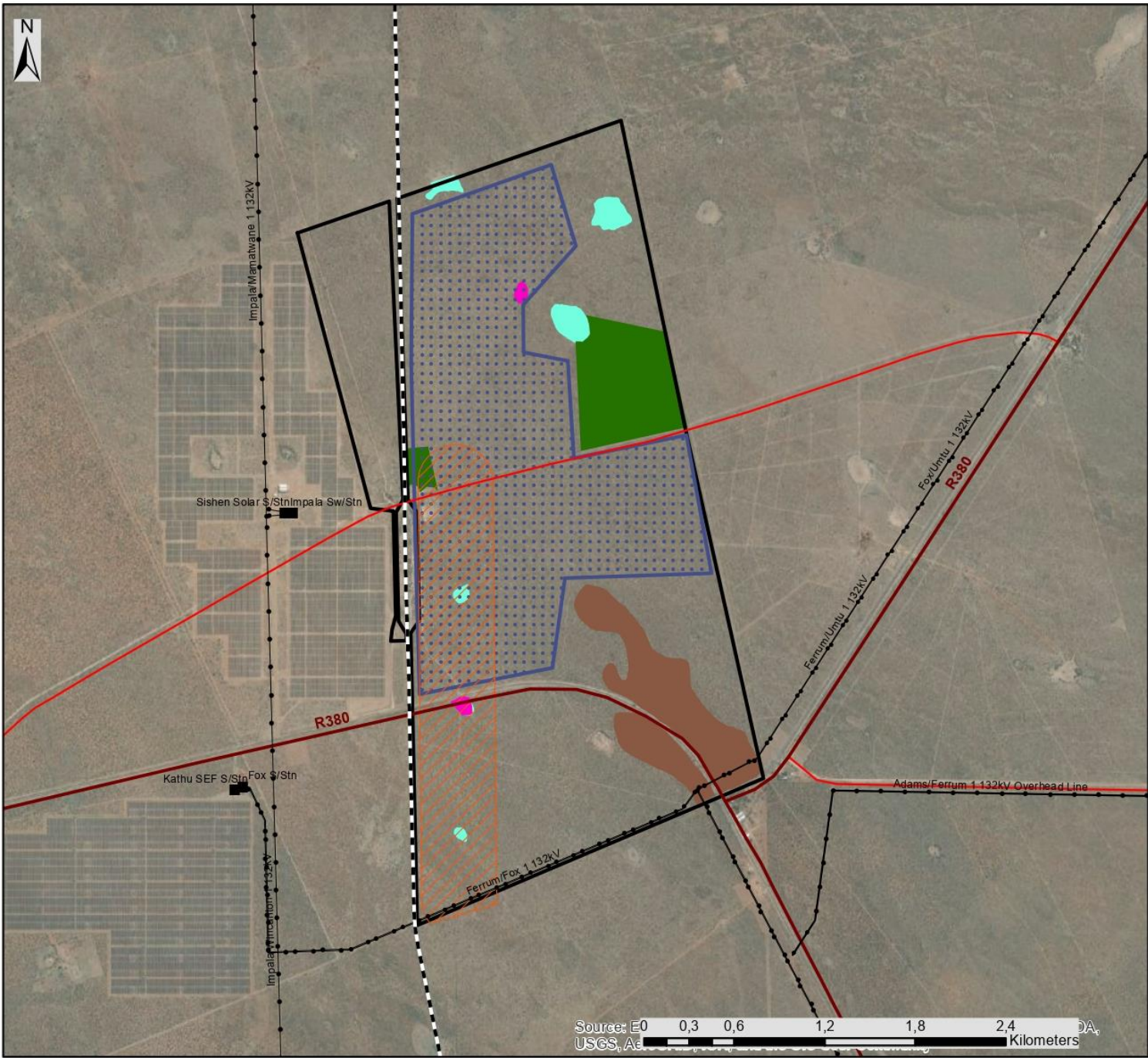


Sources: Esri, HERE, Garmin, Intermap, increment P Corp., GEBCO, USGS, FAO, NPS, NRCAN, GeoBase, IGN, Kadaster NL, Ordnance Survey, Esri Japan, METI, Esri China (Hong Kong), (c) OpenStreetMap contributors, and the GIS User Community

savannah  
environmental

Scale: 1: 50 000  
Projection: LO23  
Ref: San Solar PV - Development area





# San Solar PV Facility Northern Cape

Preliminary Sensitivity &  
Development Area Map

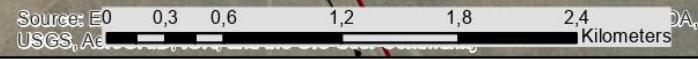
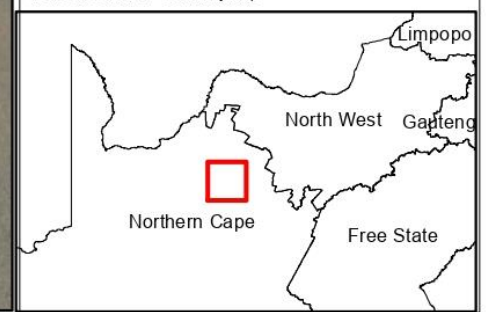
## Legend

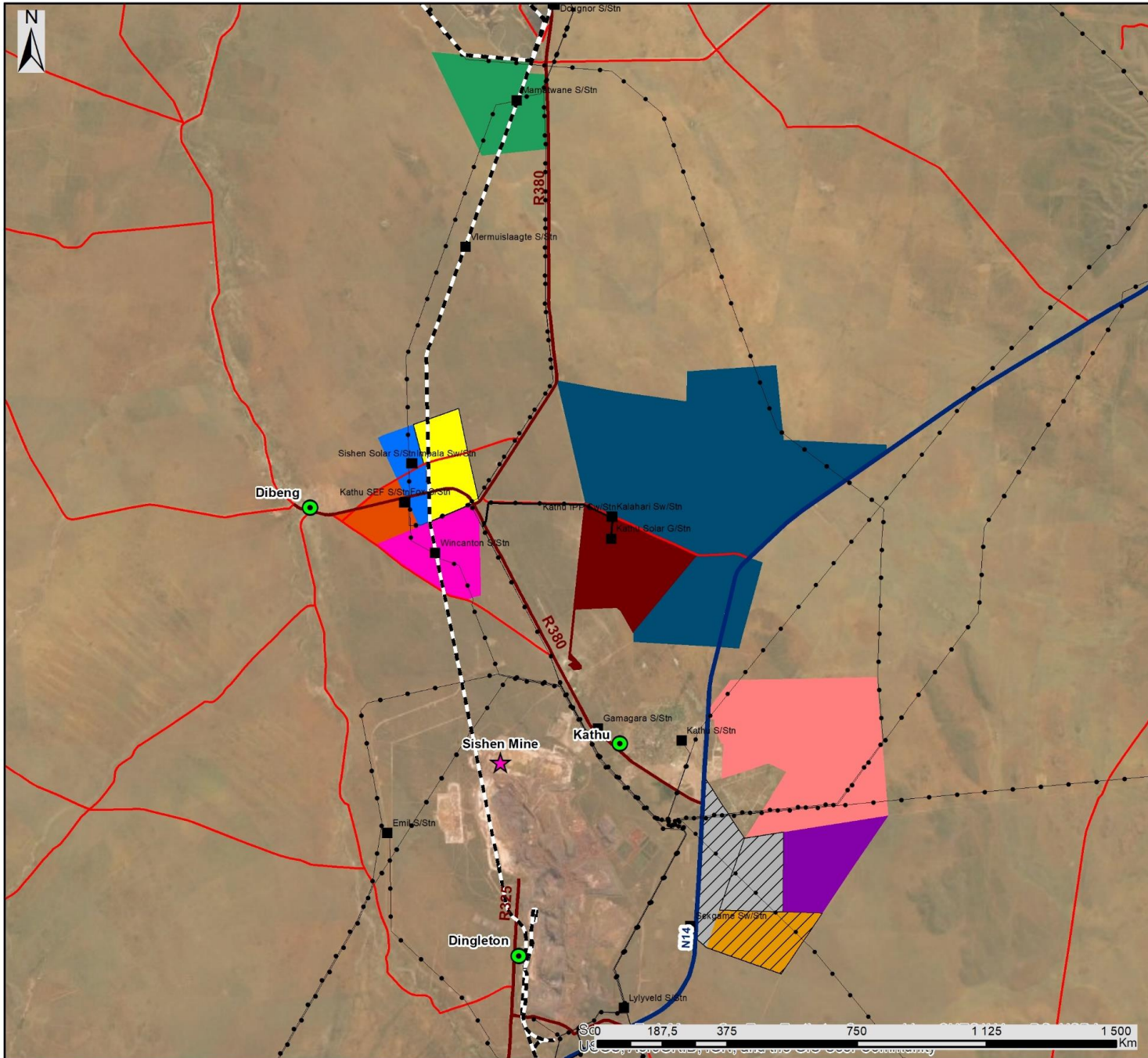
- Existing Substation
- - - Railway Line
- Existing Power Line
- Regional Road
- Main Road
- ▨ Grid Connection Corridor (500m wide)
- ▨ Development Area (400ha)
- ▭ Project Site

## Preliminary Environmental Features & Sensitivities

- Deep Sands (High Ecological Sensitivity)
- Pan (Very High Ecological Sensitivity & High Avifauna Sensitivity)
- Artificial watering point (High Avifauna Sensitivity)
- Open Kathu Bushveld (High Avifauna Sensitivity)

Scale: 1:35 000  
Projection: LO23  
Ref: San Solar PV - Sensitivity Map





# San Solar PV Facility Northern Cape

## Cumulative Map

### Legend

- ★ Sishen Mine
- Existing Substation
- Town
- - - Railway Line
- Existing Power Line
- National Route
- Regional Road
- Main Road
- Project Site

### Other known Renewable Energy Facilities (based on affected property):

- Kathu Solar PV (Operational)
- Sishen Solar PV (Operational)
- Kathu Solar CSP (Operational)
- Boitshoko Solar PV (Authorised)
- AEP Kathu Solar PV (Authorised)
- ▨ Mogara Solar PV (Authorised)
- Bestwood Solar PV (Authorised)
- Hyperion Solar PV Cluster (Authorised)
- Shirley Solar Park (Authorised)
- AEP Legoko Solar PV (Authorised)
- AEP Mogobe Solar PV (Authorised)

Scale: 1:250 000  
 Projection: LOZ3  
 Ref: San Solar PV - Locality

savannah  
 environmental

