

**SCREENING REPORT FOR AN ENVIRONMENTAL AUTHORIZATION AS
REQUIRED BY THE 2014 EIA REGULATIONS – PROPOSED SITE
ENVIRONMENTAL SENSITIVITY**

EIA Reference number:

Project name: Engie Graspan Additional Footprint

Project title: Engie Graspan Additional Footprint

Date screening report generated: 15/11/2021 08:51:17

Applicant: Engie Graspan Pty Ltd

Compiler: Savannah Environmental

Compiler signature:
.....

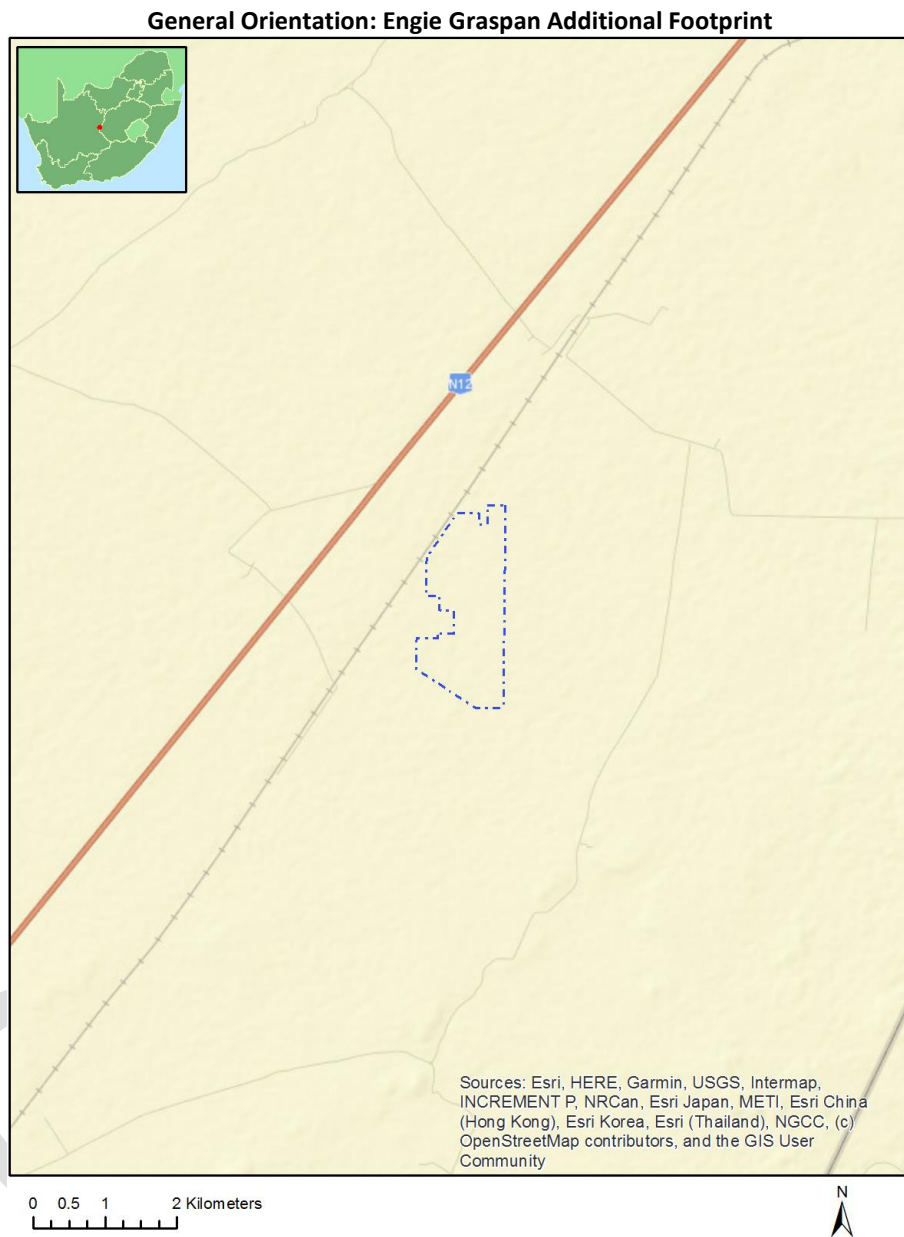
Application Category: Utilities Infrastructure|Electricity|Generation|Renewable|Solar|PV

Table of Contents

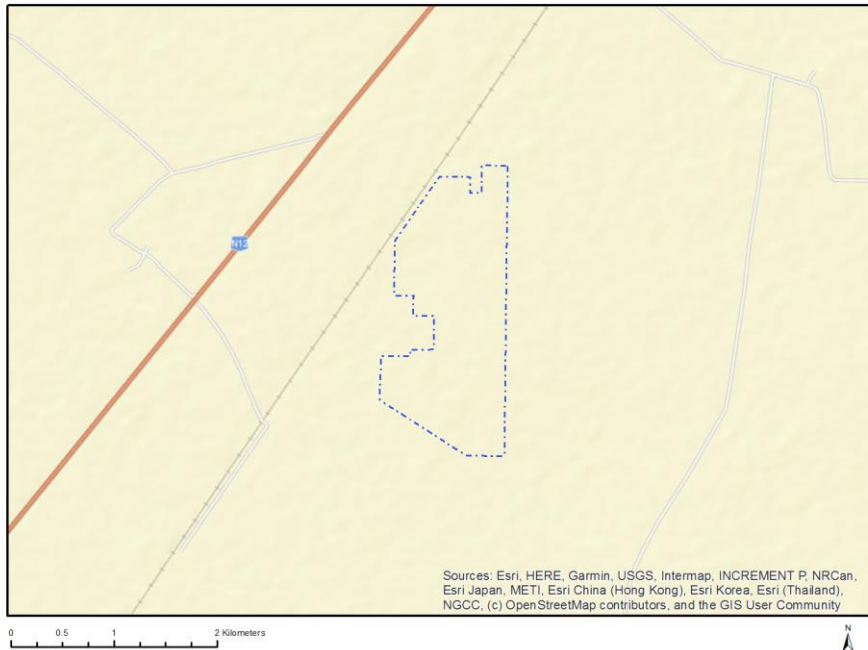
Proposed Project Location	3
Orientation map 1: General location	3
Map of proposed site and relevant area(s)	4
Cadastral details of the proposed site	4
Wind and Solar developments with an approved Environmental Authorisation or applications under consideration within 30 km of the proposed area	4
Environmental Management Frameworks relevant to the application	5
Environmental screening results and assessment outcomes	5
Relevant development incentives, restrictions, exclusions or prohibitions	5
Map indicating proposed development footprint within applicable development incentive, restriction, exclusion or prohibition zones	6
Proposed Development Area Environmental Sensitivity	6
Specialist assessments identified	7
Results of the environmental sensitivity of the proposed area	9
MAP OF RELATIVE AGRICULTURE THEME SENSITIVITY	9
MAP OF RELATIVE ANIMAL SPECIES THEME SENSITIVITY	10
MAP OF RELATIVE AQUATIC BIODIVERSITY THEME SENSITIVITY	11
MAP OF RELATIVE ARCHAEOLOGICAL AND CULTURAL HERITAGE THEME SENSITIVITY	12
MAP OF RELATIVE BATS THEME SENSITIVITY	13
MAP OF RELATIVE CIVIL AVIATION (SOLAR PV) THEME SENSITIVITY	14
MAP OF RELATIVE DEFENCE THEME SENSITIVITY	15
MAP OF RELATIVE LANDSCAPE (SOLAR) THEME SENSITIVITY	16
MAP OF RELATIVE PLANT SPECIES THEME SENSITIVITY	17
MAP OF RELATIVE RFI THEME SENSITIVITY	18
MAP OF RELATIVE TERRESTRIAL BIODIVERSITY THEME SENSITIVITY	19

Proposed Project Location

Orientation map 1: General location



Map of proposed site and relevant area(s)



Cadastral details of the proposed site

Property details:

No	Farm Name	Farm/ Erf No	Portion	Latitude	Longitude	Property Type
1	KLEIN KARREELAAGTE	168	0	29°21'19.29S	24°28'6.28E	Farm
2	GRASPAN	172	0	29°21'13.73S	24°24'55.74E	Farm
3	GRASPAN	172	0	29°21'23.32S	24°25'54.62E	Farm Portion
4	KLEIN KARREELAAGTE	168	4	29°20'24.21S	24°27'7.71E	Farm Portion

Development footprint¹ vertices:

No development footprint(s) specified.

Wind and Solar developments with an approved Environmental Authorisation or applications under consideration within 30 km of the proposed area

No	EIA Reference No	Classification	Status of application	Distance from proposed area (km)
1	12/12/20/2051/2	Solar PV	Approved	29.9

¹ "development footprint", means the area within the site on which the development will take place and includes all ancillary developments for example roads, power lines, boundary walls, paving etc. which require vegetation clearance or which will be disturbed and for which the application has been submitted.

2	14/12/16/3/3/1/478	Solar PV	Approved	0
3	12/12/20/2051/1	Solar PV	Approved	29.9
4	14/12/16/3/3/2/748	Solar PV	Approved	0
5	14/12/16/3/3/2/276	Solar PV	Approved	0
6	14/12/16/3/3/2/419	Solar PV	Approved	3.5

Environmental Management Frameworks relevant to the application

No intersections with EMF areas found.

Environmental screening results and assessment outcomes

The following sections contain a summary of any development incentives, restrictions, exclusions or prohibitions that apply to the proposed development site as well as the most environmental sensitive features on the site based on the site sensitivity screening results for the application classification that was selected. The application classification selected for this report is:

Utilities Infrastructure | Electricity | Generation | Renewable | Solar | PV.

Relevant development incentives, restrictions, exclusions or prohibitions

The following development incentives, restrictions, exclusions or prohibitions and their implications that apply to this site are indicated below.

Incentive, restriction or prohibition	Implication
Strategic Transmission Corridor-Central corridor	https://screening.environment.gov.za/ScreeningDownloads/DevelopmentZones/Combined_EGI.pdf

Map indicating proposed development footprint within applicable development incentive, restriction, exclusion or prohibition zones



Proposed Development Area Environmental Sensitivity

The following summary of the development site environmental sensitivities is identified. Only the highest environmental sensitivity is indicated. The footprint environmental sensitivities for the proposed development footprint as identified, are indicative only and must be verified on site by a suitably qualified person before the specialist assessments identified below can be confirmed.

Theme	Very High sensitivity	High sensitivity	Medium sensitivity	Low sensitivity
Agriculture Theme			X	
Animal Species Theme			X	

Aquatic Biodiversity Theme				X
Archaeological and Cultural Heritage Theme		X		
Bats Theme				X
Civil Aviation (Solar PV) Theme				X
Defence Theme				X
Landscape (Solar) Theme	X			
Plant Species Theme				X
RFI Theme				X
Terrestrial Biodiversity Theme	X			

Specialist assessments identified

Based on the selected classification, and the environmental sensitivities of the proposed development footprint, the following list of specialist assessments have been identified for inclusion in the assessment report. It is the responsibility of the EAP to confirm this list and to motivate in the assessment report, the reason for not including any of the identified specialist study including the provision of photographic evidence of the site situation.

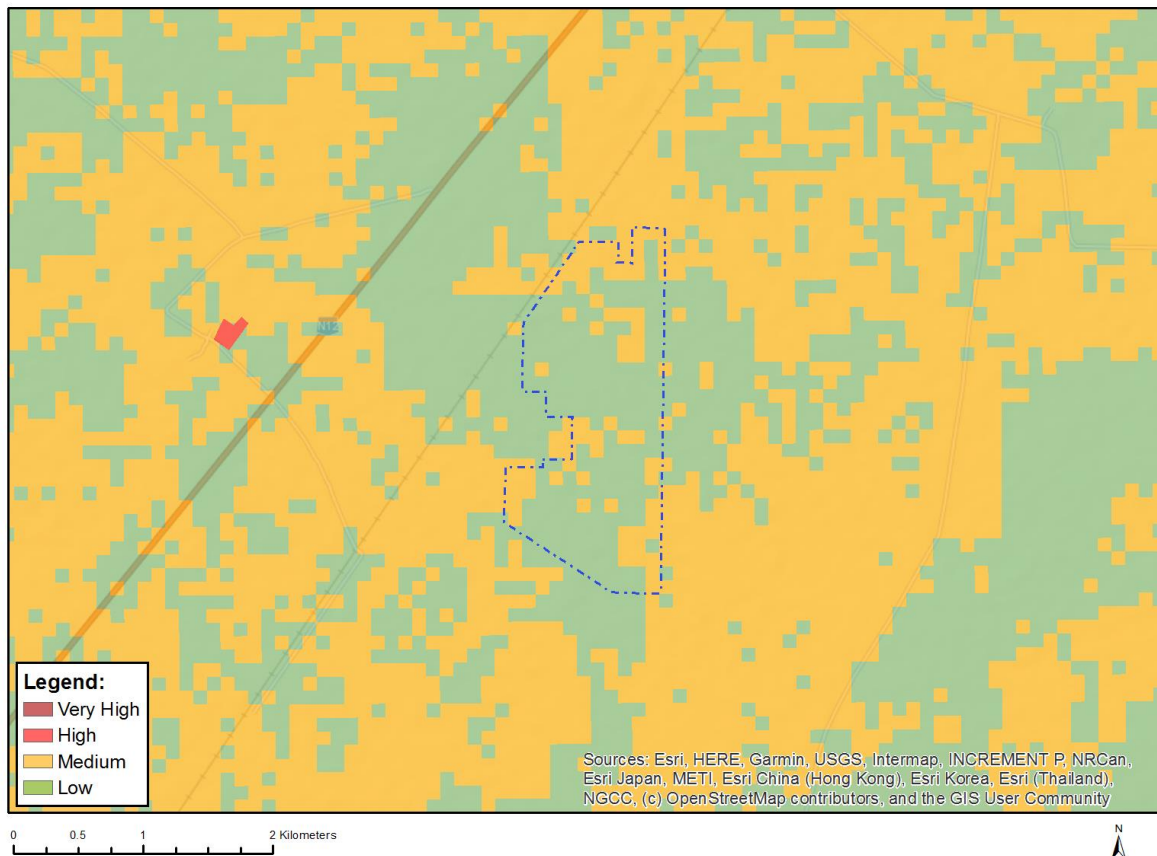
N o	Specialist assessment	Assessment Protocol
1	Agricultural Impact Assessment	https://screening.environment.gov.za/ScreeningDownloads/AssessmentProtocols/Gazetted_WindAndSolar_Agriculture_Assessment_Protocols.pdf
2	Landscape/Visual Impact Assessment	https://screening.environment.gov.za/ScreeningDownloads/AssessmentProtocols/Gazetted_General_Requirement_Assessment_Protocols.pdf
3	Archaeological and Cultural Heritage Impact Assessment	https://screening.environment.gov.za/ScreeningDownloads/AssessmentProtocols/Gazetted_General_Requirement_Assessment_Protocols.pdf
4	Palaeontology Impact Assessment	https://screening.environment.gov.za/ScreeningDownloads/AssessmentProtocols/Gazetted_General_Requirement_Assessment_Protocols.pdf
5	Terrestrial Biodiversity Impact Assessment	https://screening.environment.gov.za/ScreeningDownloads/AssessmentProtocols/Gazetted_Terrestrial_Biodiversity_Assessment_Protocols.pdf
6	Aquatic Biodiversity Impact Assessment	https://screening.environment.gov.za/ScreeningDownloads/AssessmentProtocols/Gazetted_Aquatic_Biodiversity_Assessment_Protocols.pdf

	Assessment	
7	Avian Impact Assessment	https://screening.environment.gov.za/ScreeningDownloads/AssessmentProtocols/Gazetted_Avifauna_Assessment_Protocols.pdf
8	Civil Aviation Assessment	https://screening.environment.gov.za/ScreeningDownloads/AssessmentProtocols/Gazetted_Civil_Aviation_Installations_Assessment_Protocols.pdf
9	Defense Assessment	https://screening.environment.gov.za/ScreeningDownloads/AssessmentProtocols/Gazetted_Defence_Installations_Assessment_Protocols.pdf
10	RFI Assessment	https://screening.environment.gov.za/ScreeningDownloads/AssessmentProtocols/Gazetted_General_Requirement_Assessment_Protocols.pdf
11	Geotechnical Assessment	https://screening.environment.gov.za/ScreeningDownloads/AssessmentProtocols/Gazetted_General_Requirement_Assessment_Protocols.pdf
12	Socio-Economic Assessment	https://screening.environment.gov.za/ScreeningDownloads/AssessmentProtocols/Gazetted_General_Requirement_Assessment_Protocols.pdf
13	Plant Species Assessment	https://screening.environment.gov.za/ScreeningDownloads/AssessmentProtocols/Gazetted_Plant_Species_Assessment_Protocols.pdf
14	Animal Species Assessment	https://screening.environment.gov.za/ScreeningDownloads/AssessmentProtocols/Gazetted_Animal_Species_Assessment_Protocols.pdf

Results of the environmental sensitivity of the proposed area.

The following section represents the results of the screening for environmental sensitivity of the proposed site for relevant environmental themes associated with the project classification. It is the duty of the EAP to ensure that the environmental themes provided by the screening tool are comprehensive and complete for the project. Refer to the disclaimer.

MAP OF RELATIVE AGRICULTURE THEME SENSITIVITY

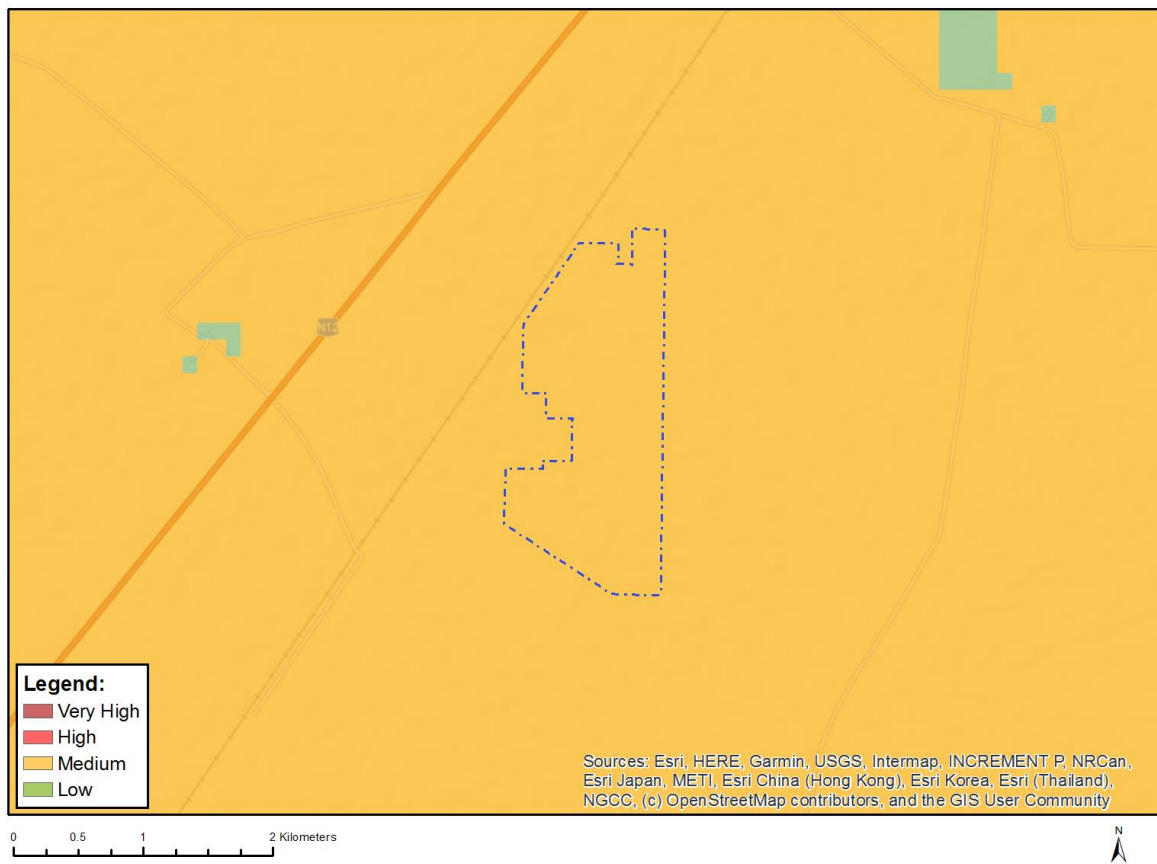


Very High sensitivity	High sensitivity	Medium sensitivity	Low sensitivity
		X	

Sensitivity Features:

Sensitivity	Feature(s)
Low	Land capability;01. Very low/02. Very low/03. Low-Very low/04. Low-Very low/05. Low
Medium	Land capability;06. Low-Moderate/07. Low-Moderate/08. Moderate

MAP OF RELATIVE ANIMAL SPECIES THEME SENSITIVITY



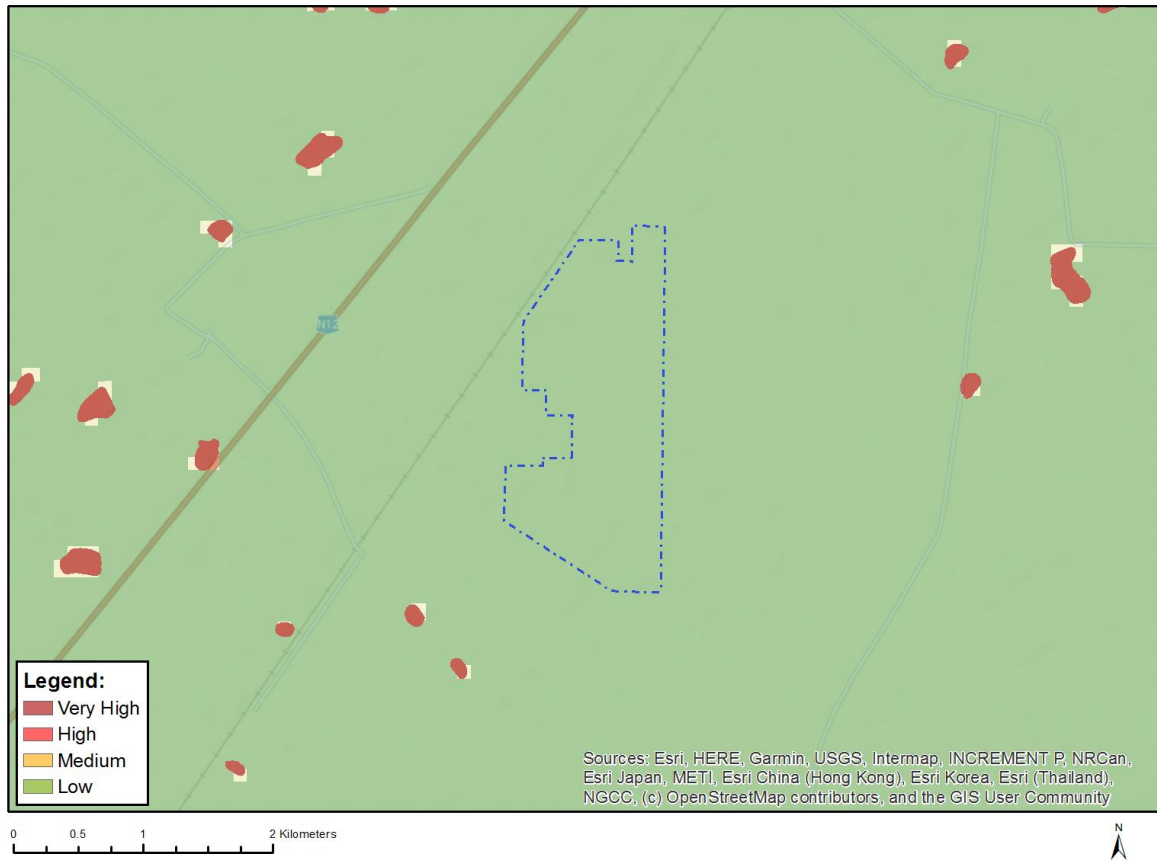
Where only a sensitive plant unique number or sensitive animal unique number is provided in the screening report and an assessment is required, the environmental assessment practitioner (EAP) or specialist is required to email SANBI at eiadatarequests@sanbi.org.za listing all sensitive species with their unique identifiers for which information is required. The name has been withheld as the species may be prone to illegal harvesting and must be protected. SANBI will release the actual species name after the details of the EAP or specialist have been documented.

Very High sensitivity	High sensitivity	Medium sensitivity	Low sensitivity
		X	

Sensitivity Features:

Sensitivity	Feature(s)
Medium	Aves-Neotis ludwigii

MAP OF RELATIVE AQUATIC BIODIVERSITY THEME SENSITIVITY

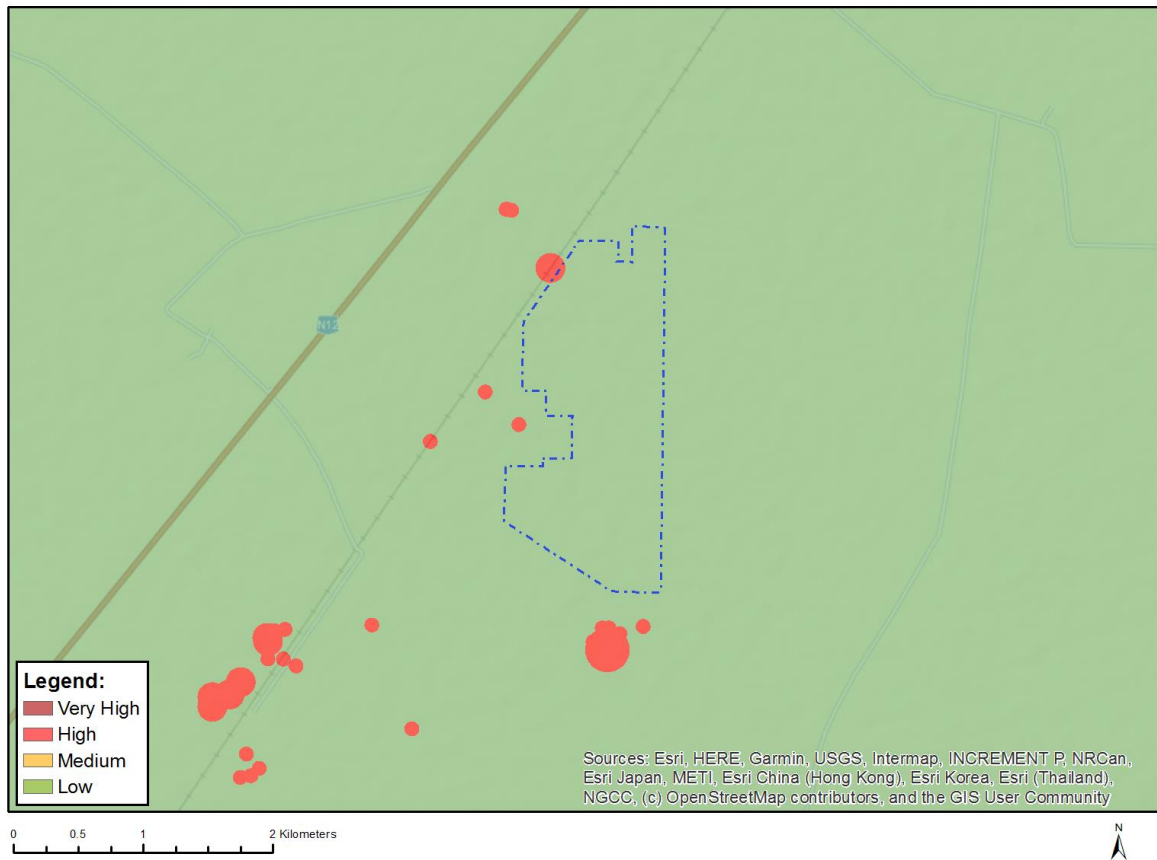


Very High sensitivity	High sensitivity	Medium sensitivity	Low sensitivity
			X

Sensitivity Features:

Sensitivity	Feature(s)
Low	Low sensitivity

MAP OF RELATIVE ARCHAEOLOGICAL AND CULTURAL HERITAGE THEME SENSITIVITY

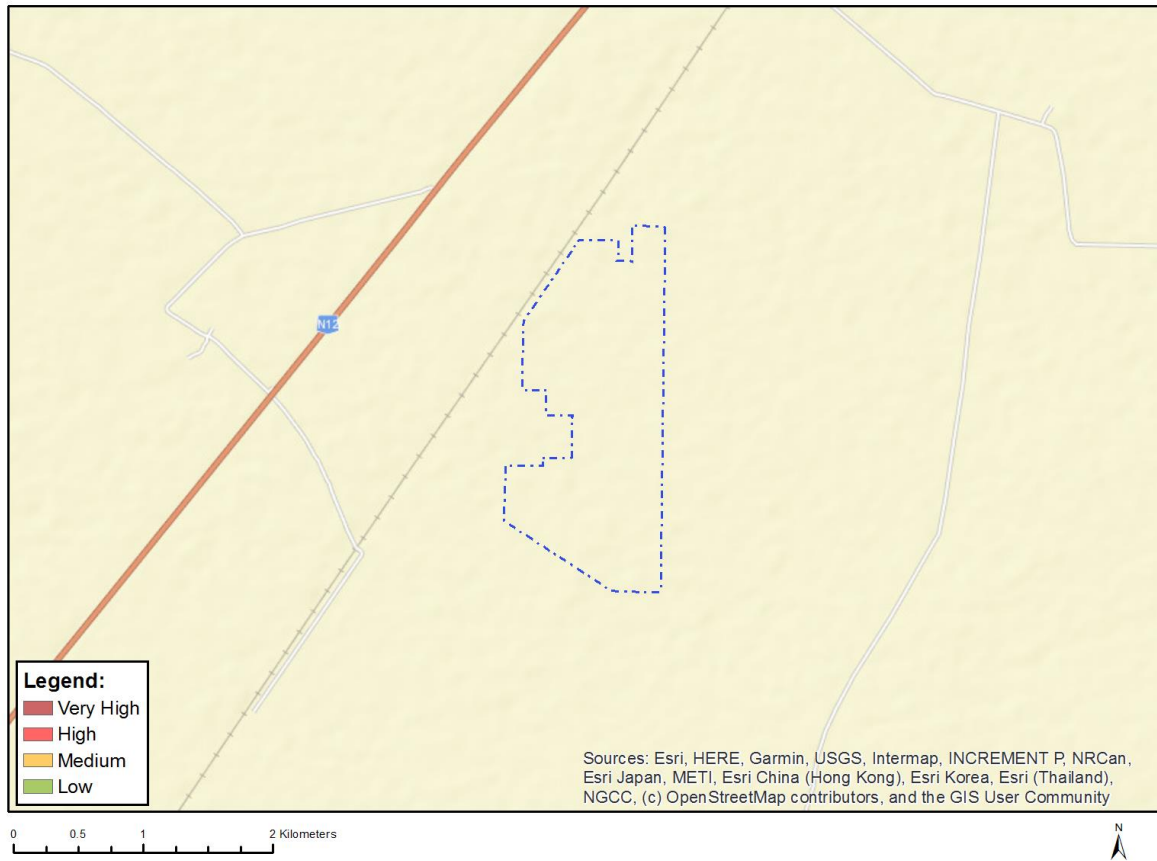


Very High sensitivity	High sensitivity	Medium sensitivity	Low sensitivity
	X		

Sensitivity Features:

Sensitivity	Feature(s)
High	Within 100m of a Grade IIIb Heritage site
Low	Low sensitivity

MAP OF RELATIVE BATS THEME SENSITIVITY

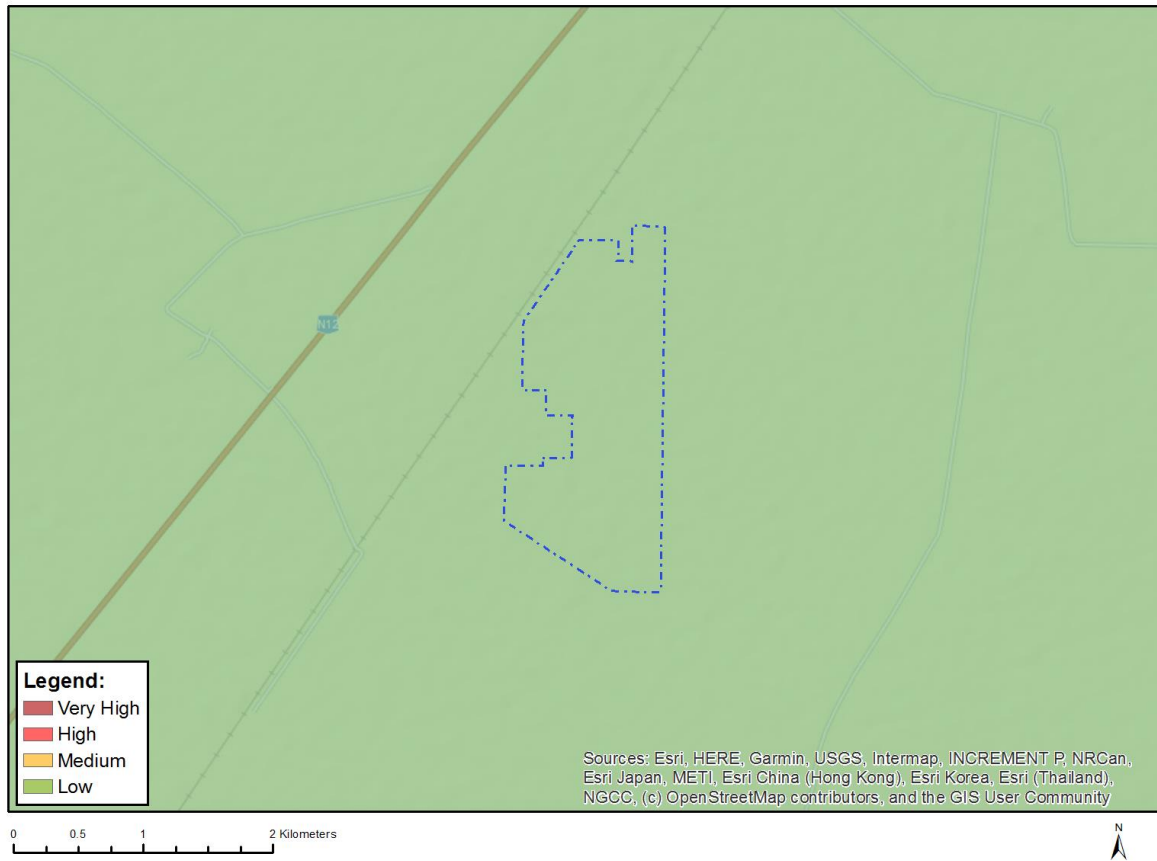


Very High sensitivity	High sensitivity	Medium sensitivity	Low sensitivity
			X

Sensitivity Features:

Sensitivity	Feature(s)
Low	Low sensitivity

MAP OF RELATIVE CIVIL AVIATION (SOLAR PV) THEME SENSITIVITY

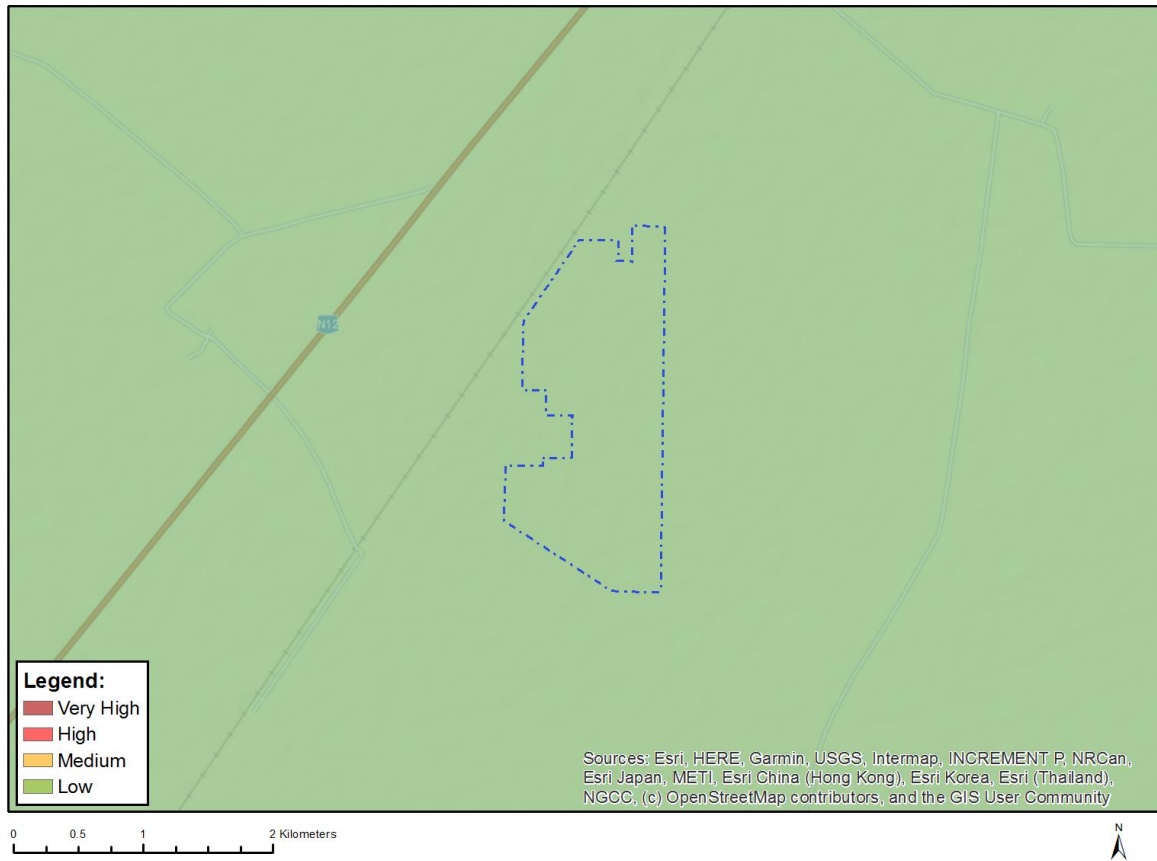


Very High sensitivity	High sensitivity	Medium sensitivity	Low sensitivity
			X

Sensitivity Features:

Sensitivity	Feature(s)
Low	No major or other types of civil aviation aerodromes

MAP OF RELATIVE DEFENCE THEME SENSITIVITY

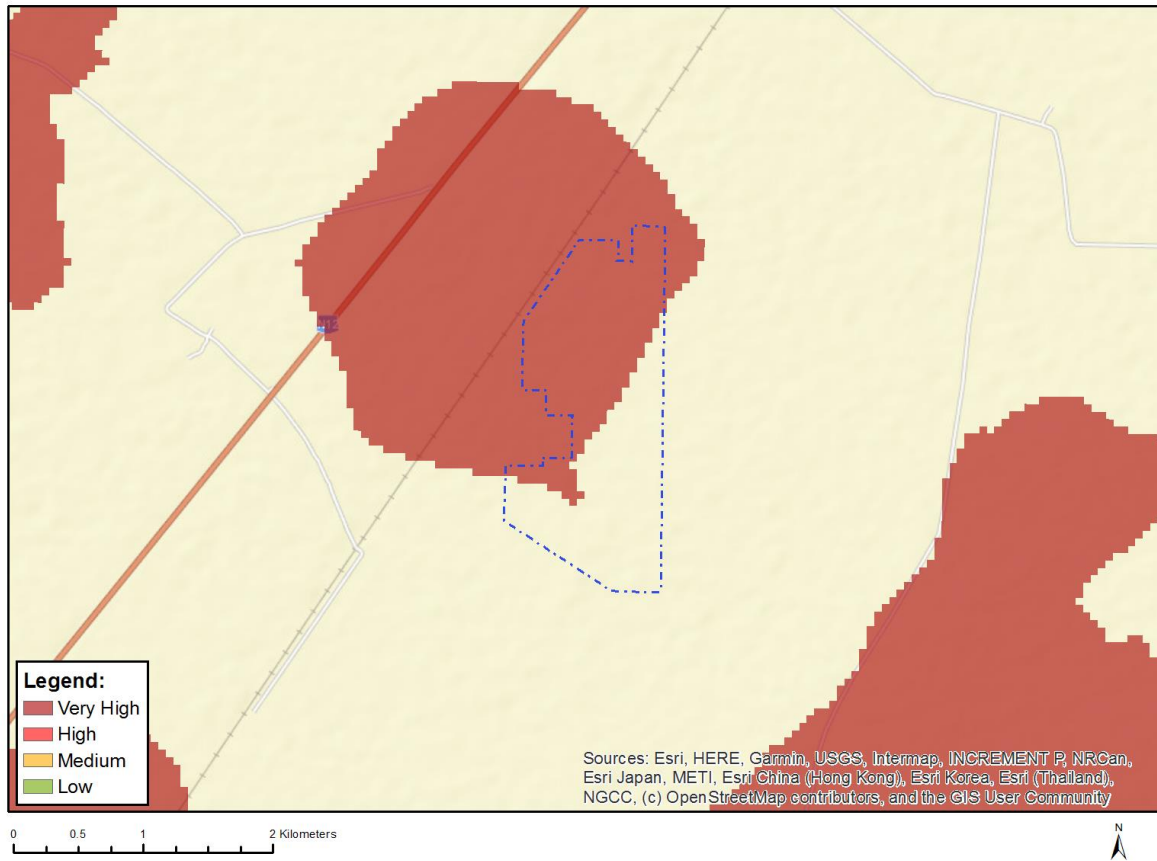


Very High sensitivity	High sensitivity	Medium sensitivity	Low sensitivity
			X

Sensitivity Features:

Sensitivity	Feature(s)
Low	Low sensitivity

MAP OF RELATIVE LANDSCAPE (SOLAR) THEME SENSITIVITY

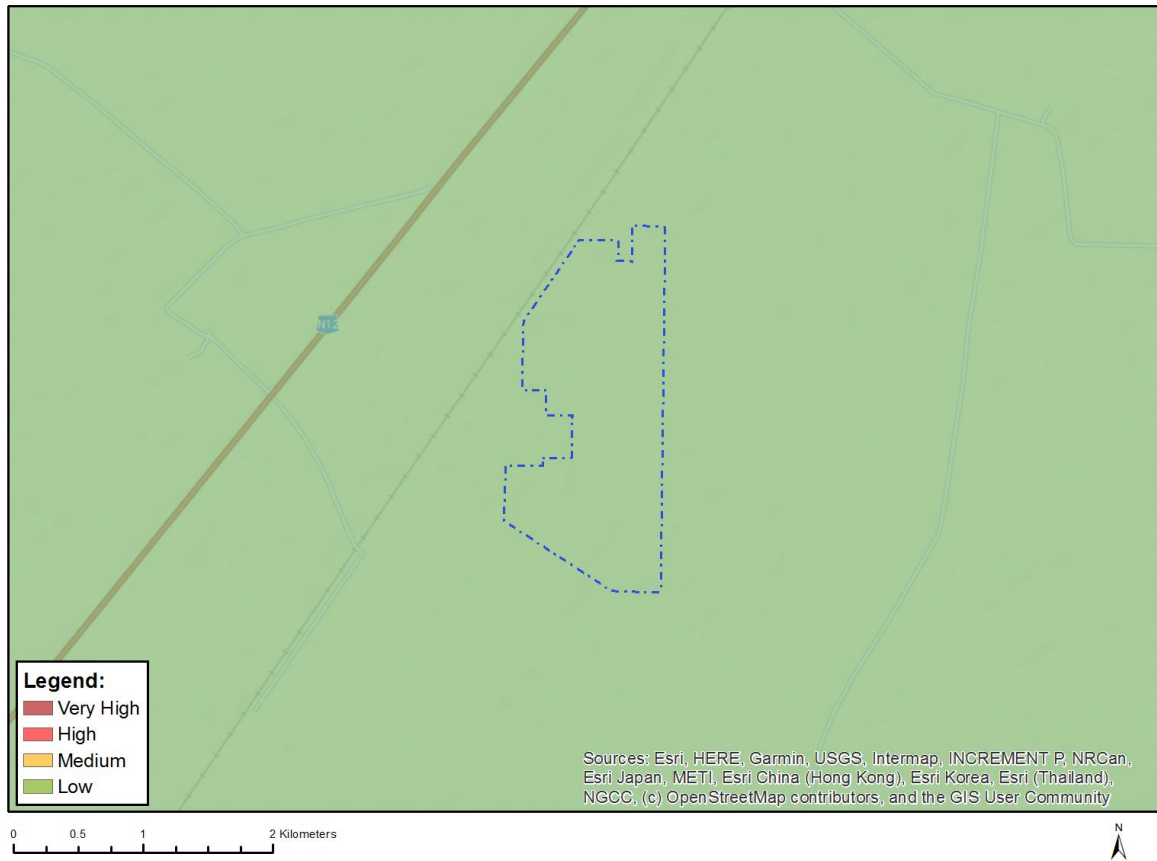


Very High sensitivity	High sensitivity	Medium sensitivity	Low sensitivity
X			

Sensitivity Features:

Sensitivity	Feature(s)
Very High	Mountain tops and high ridges

MAP OF RELATIVE PLANT SPECIES THEME SENSITIVITY



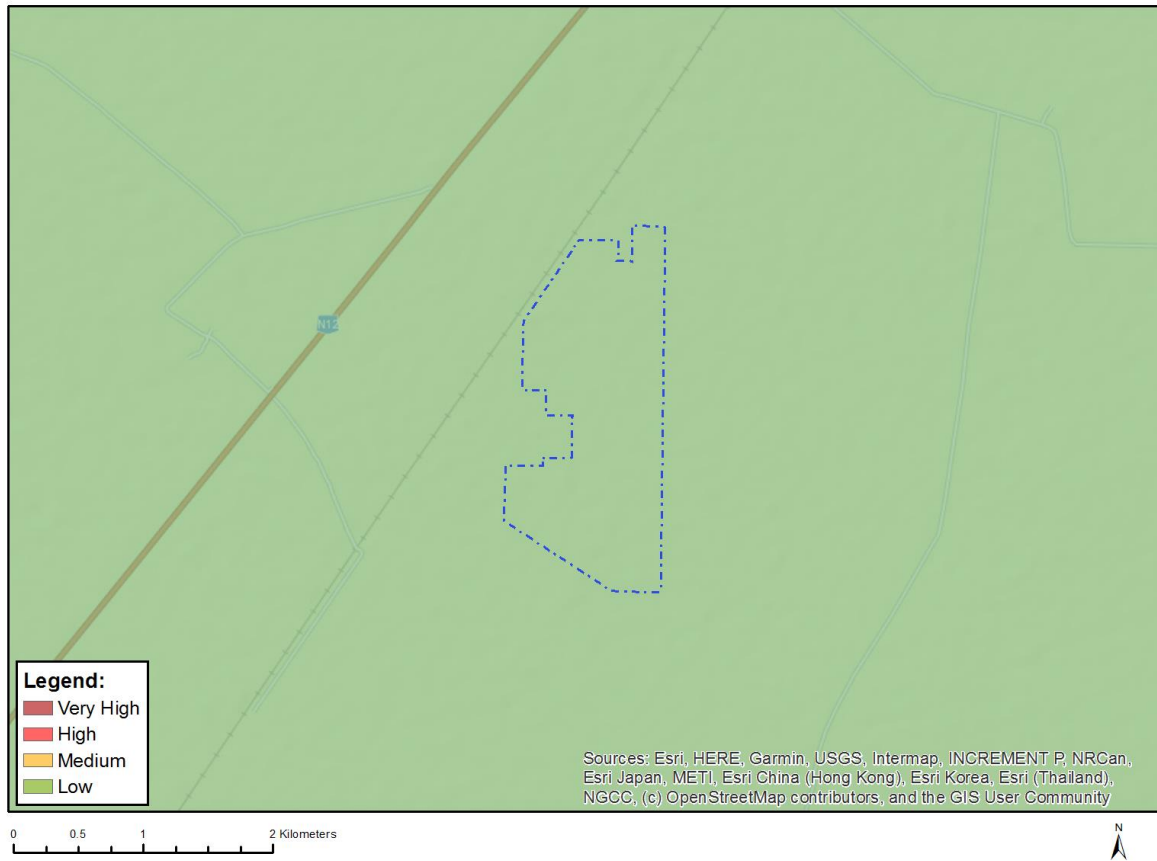
Where only a sensitive plant unique number or sensitive animal unique number is provided in the screening report and an assessment is required, the environmental assessment practitioner (EAP) or specialist is required to email SANBI at eiadatarequests@sanbi.org.za listing all sensitive species with their unique identifiers for which information is required. The name has been withheld as the species may be prone to illegal harvesting and must be protected. SANBI will release the actual species name after the details of the EAP or specialist have been documented.

Very High sensitivity	High sensitivity	Medium sensitivity	Low sensitivity
			X

Sensitivity Features:

Sensitivity	Feature(s)
Low	Low Sensitivity

MAP OF RELATIVE RFI THEME SENSITIVITY

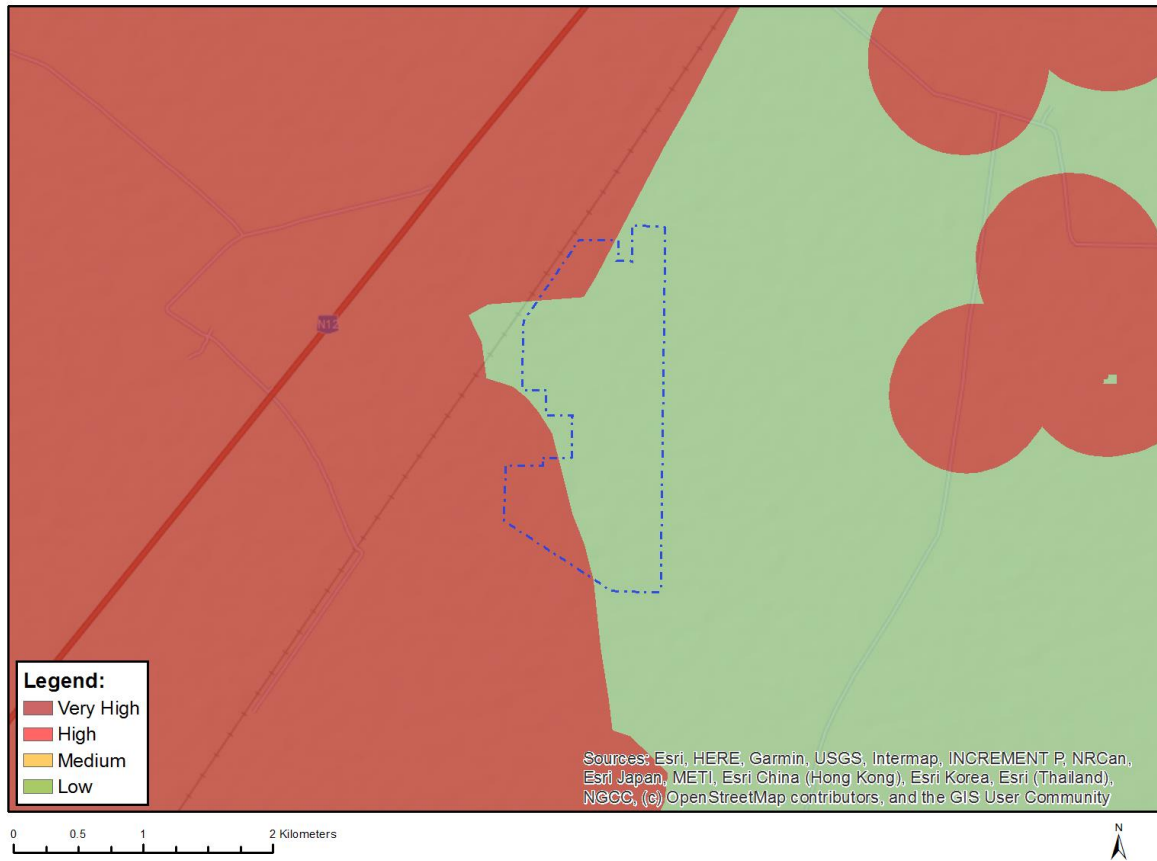


Very High sensitivity	High sensitivity	Medium sensitivity	Low sensitivity
			X

Sensitivity Features:

Sensitivity	Feature(s)
Low	Low sensitivity

MAP OF RELATIVE TERRESTRIAL BIODIVERSITY THEME SENSITIVITY



Very High sensitivity	High sensitivity	Medium sensitivity	Low sensitivity
X			

Sensitivity Features:

Sensitivity	Feature(s)
Low	Low Sensitivity
Very High	Ecological support area
Very High	Protected Areas Expansion Strategy