

# Harmony Central Plant Solar PV Free State Province

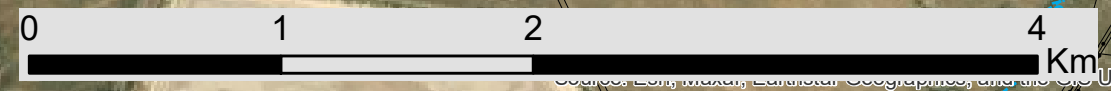
## Locality & Protected Area Map

### Legend

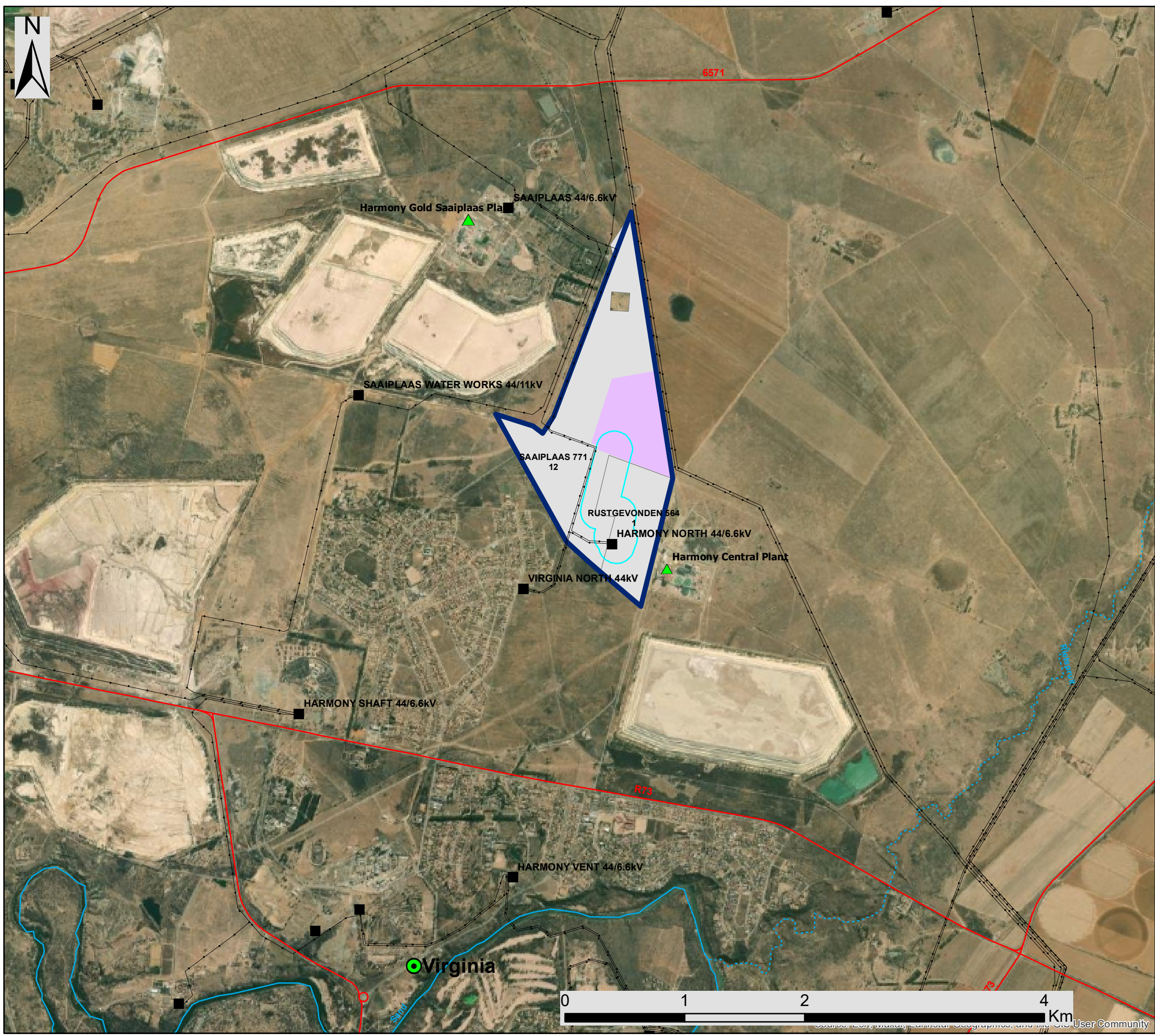
- ▲ Harmony Gold Sites
  - Eskom Substation
  - Existing Power Line
  - Main Road
  - Perennial River
  - - - Non-perennial River
  - Thabong Game Farm
- ### Proposed Development
- Central Plant Development Area
  - Development Footprint
  - Grid Connection Corridor (200m)
  - Affected Properties



Scale: 1:30 000  
 Projection: GCS\_WGS\_1984  
 Map Ref: Central Locality & Protected Area Map







# Harmony Central Plant Solar PV Free State Province

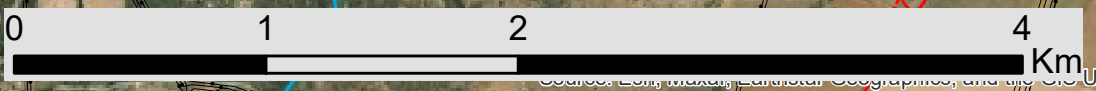
## Locality Map

### Legend

- Town
  - Harmony Gold Sites
  - Eskom Substation
  - Existing Power Line
  - Main Road
  - Perennial River
  - Non-perennial River
- Proposed Development**
- Central Plant Development Area
  - Development Footprint
  - Grid Connection Corridor (200m)
  - Affected Properties

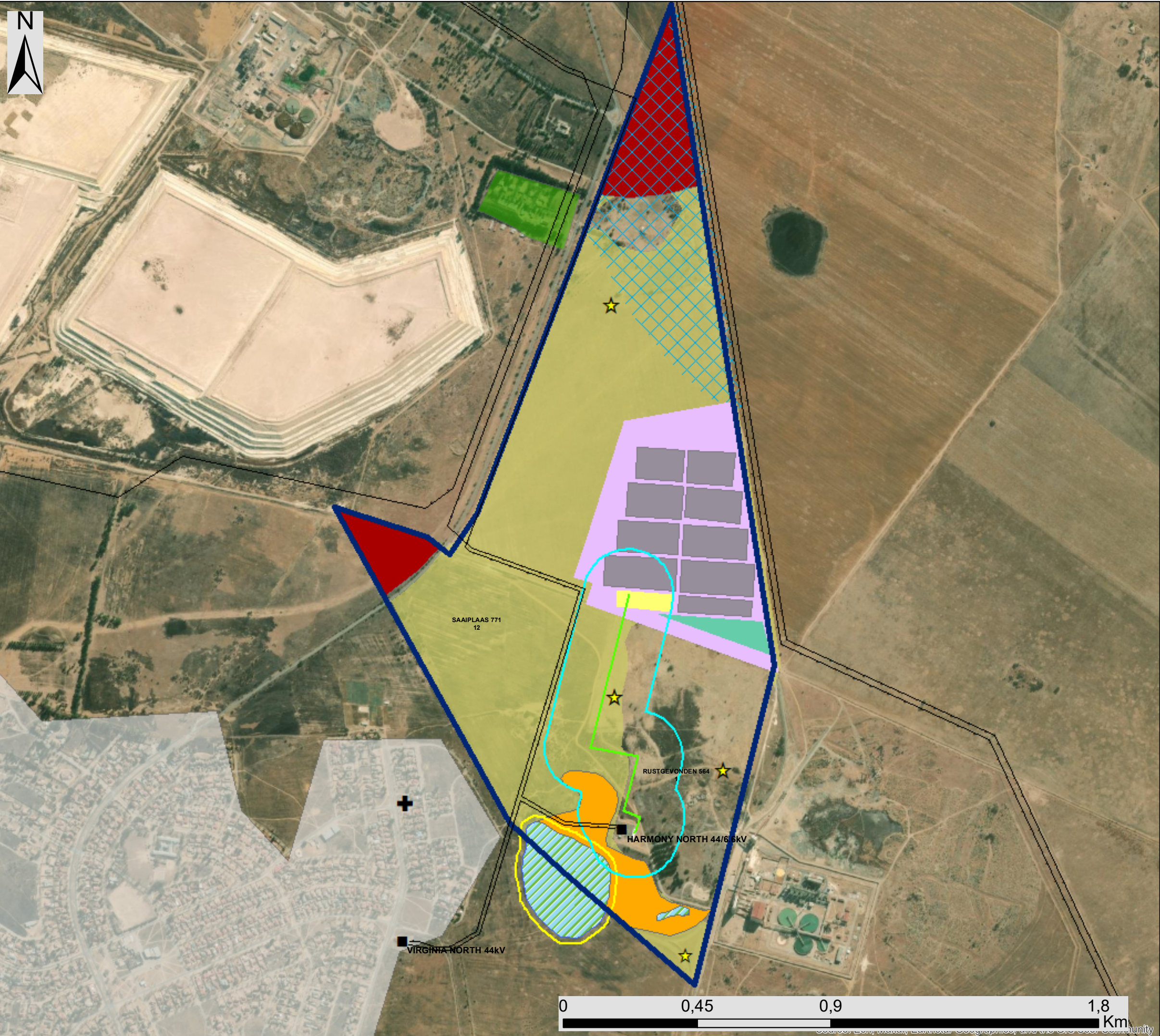


Scale: 1:30 000  
 Projection: GCS\_WGS\_1984  
 Map Ref: Central Locality Map



Source: Esri, Imagery, Landsat, Geoportals, and the GIS User Community





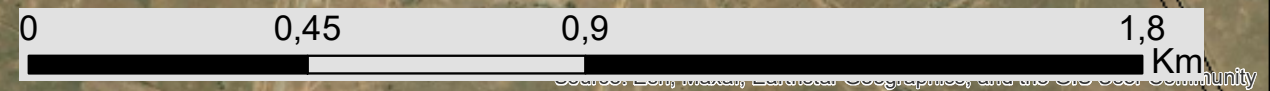
# Harmony Central Plant Solar PV Free State Province

## Sensitivity & Layout Map

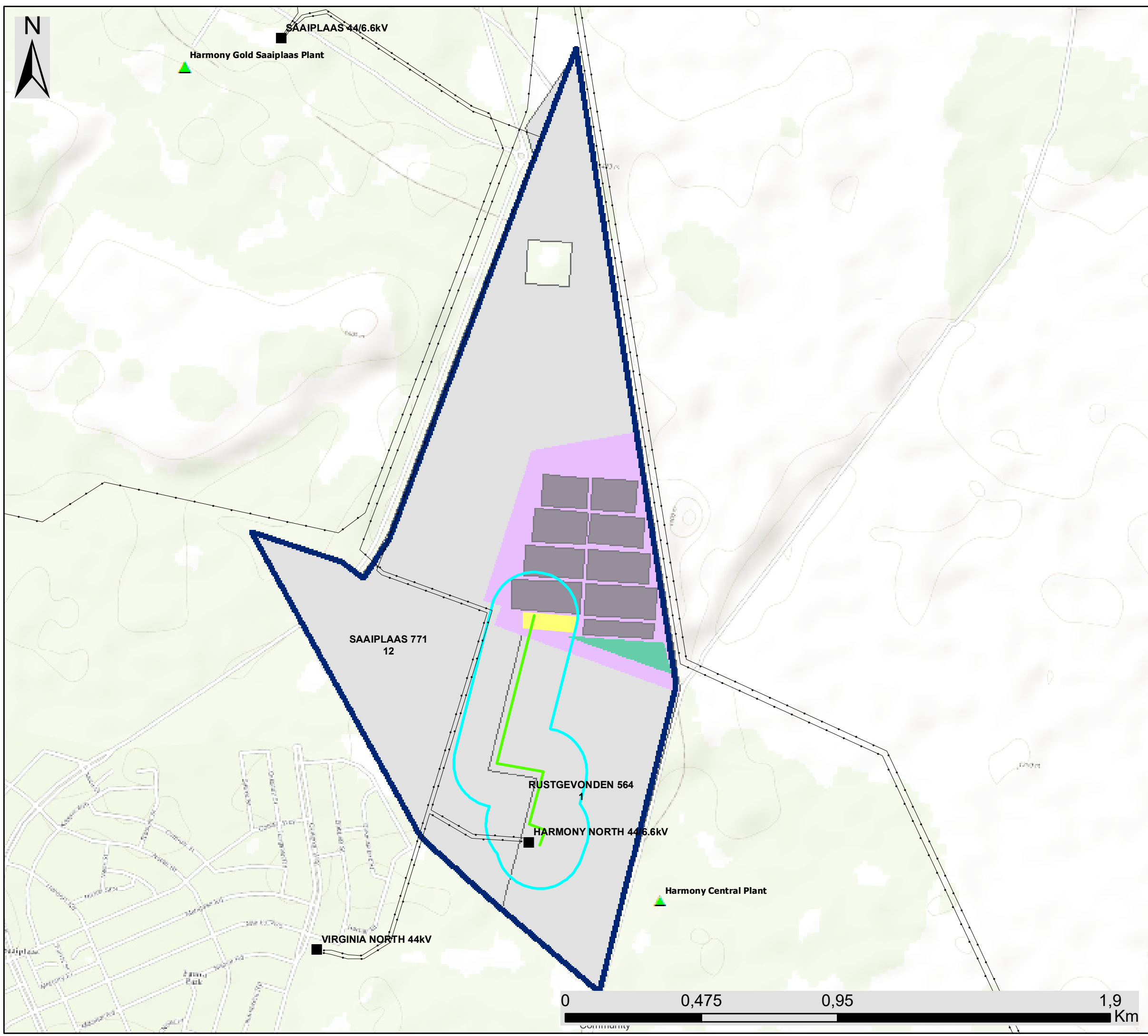
### Legend

- Eskom Substation
- Existing Power Line
- Proposed Development**
- ▭ Central Plant Development Area
- ▭ Development Footprint
- ▭ Grid Connection Corridor (200m)
- Overhead Power Line
- ▭ PV Arrays
- ▭ Facility Substation and O&M Hub
- ▭ Laydown Area
- Environmental Sensitivities**
- Ecological Sensitivity**
- ▭ CBA 1/Endangered Grassland (Very High Ecological Sensitivity)
- ▭ Wetland (Very High Ecological Sensitivity)
- ▭ Wetland 20m Buffer (High Ecological Sensitivity)
- ▭ Endangered Grassland (High Ecological Sensitivity)
- Heritage Features**
- ★ Archaeology Site (Low Heritage Sensitivity)
- Avifauna Sensitivity**
- ▭ Pan 500m Buffer (High Avifauna Sensitivity)
- Soil Sensitivity**
- ▭ Avalon & Bainsvlei Soil (Medium Soil Sensitivity)
- Social Sensitivity**
- ⊕ Place of Worship
- ▭ Club Du Ville
- ▭ Saaiplaas Residential Area

Scale: 1:12 000  
 Projection: GCS\_WGS\_1984  
 Map Ref: Sensitivity & Layout Map





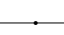

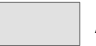










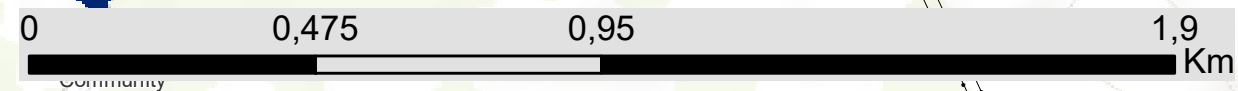
# Harmony Central Plant Solar PV Free State Province

## Facility Layout Map

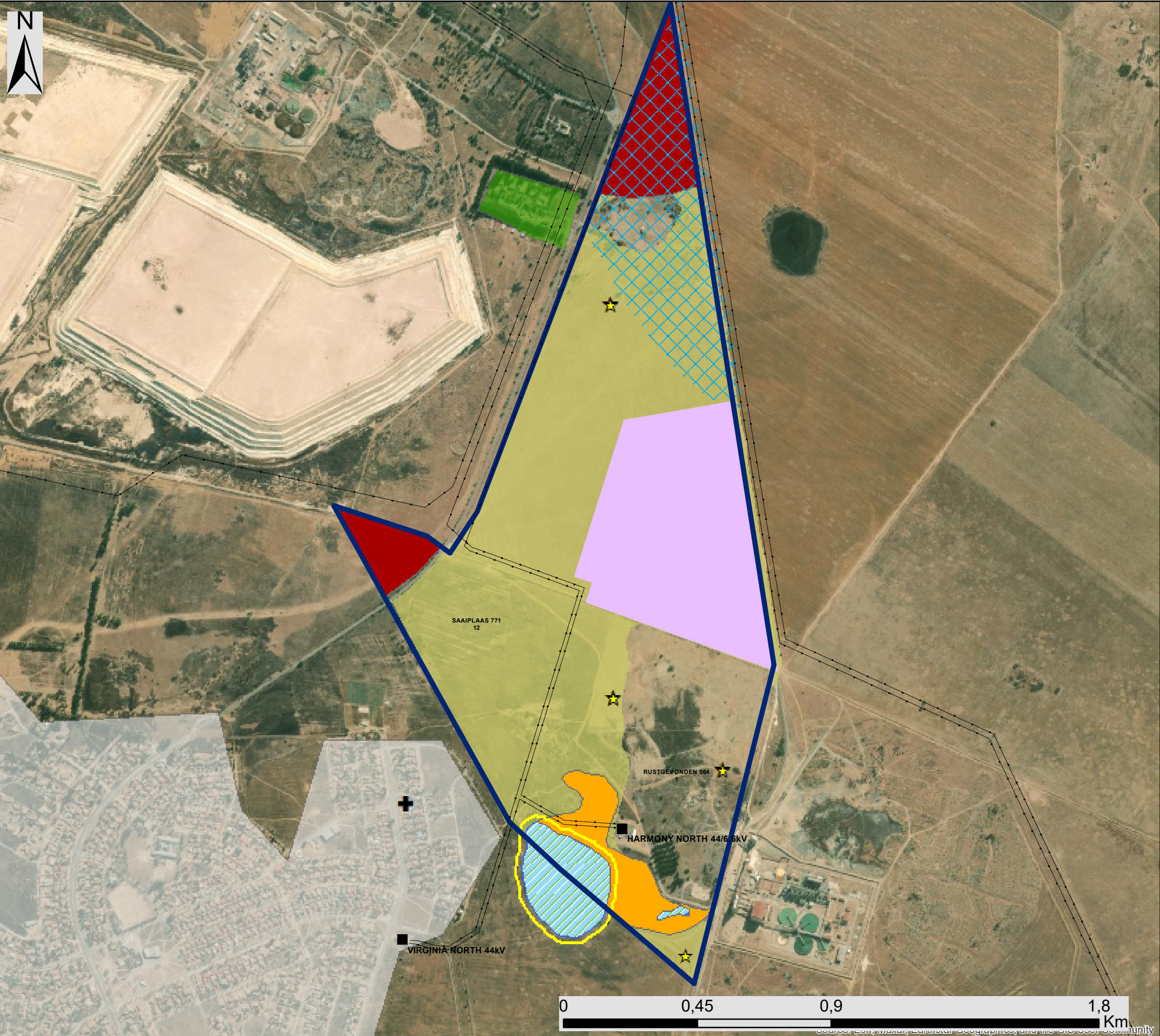
### Legend

-  Harmony Gold Sites
-  Eskom Substation
-  Existing Power Line
-  Central Plant Development Area
-  Affected Properties
-  Development Footprint
-  Grid Connection Corridor (200m)
-  Overhead Power Line
-  Facility Substation and O&M Hub
-  Laydown Area
-  PV Arrays

Scale: 1:15 000  
 Projection: GCS\_WGS\_1984  
 Map Ref: Central Layout Map







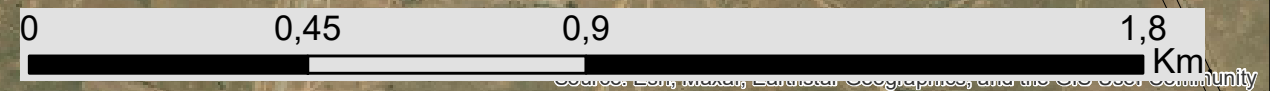
# Harmony Central Plant Solar PV Free State Province

## Sensitivity Map

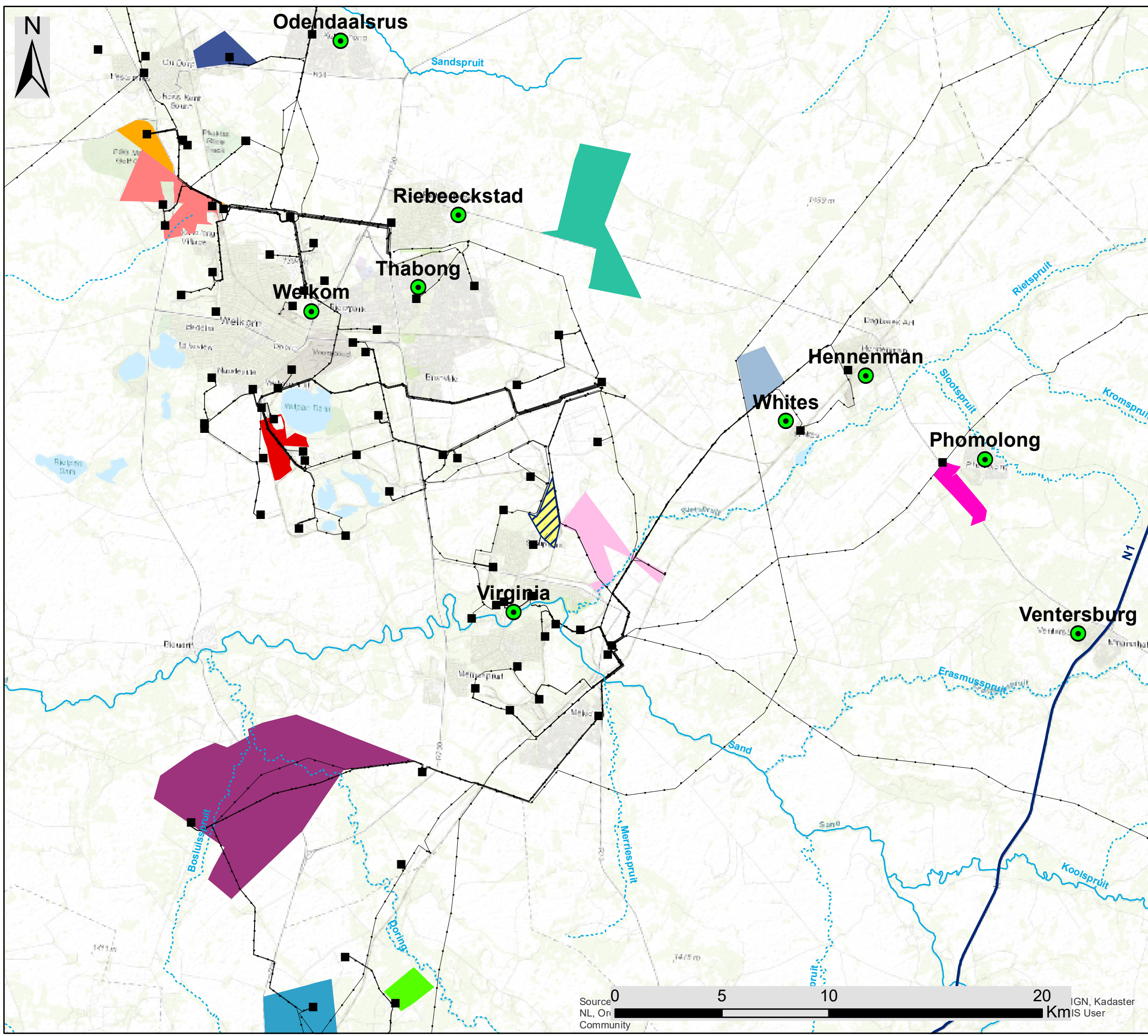
### Legend

- Eskom Substation
- Existing Power Line
- Proposed Development**
- ▭ Central Plant Development Area
- ▭ Development Footprint
- Environmental Sensitivities**
- Ecological Sensitivity**
- CBA 1/Endangered Grassland (Very High Ecological Sensitivity)
- ▨ Wetland (Very High Ecological Sensitivity)
- ▨ Wetland 20m Buffer (High Ecological Sensitivity)
- Endangered Grassland (High Ecological Sensitivity)
- Heritage Features**
- ★ Archaeology Site
- Avifauna Sensitivity**
- ▨ Pan 500m Buffer (High Avifauna Sensitivity)
- Soil Sensitivity**
- Avalon & Bainsvlei Soil (Medium Soil Sensitivity)
- Social Sensitivity**
- ⊕ Place of Worship
- Club Du Ville
- Saaiplaas Residential

Scale: 1:12 000  
 Projection: GCS\_WGS\_1984  
 Map Ref: Sensitivity Map







# Harmony Central Plant Solar PV Free State Province

## Cumulative Map

### Legend

- Town
- Eskom Substation
- Existing Power Line
- National Route
- Perennial River
- - - Non-perennial River

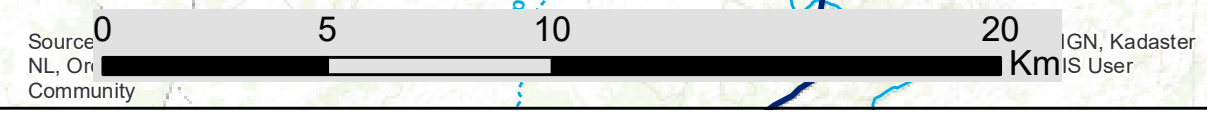
### Proposed Developments

- Central Plant Development Area
- Harmony One Development Area
- Joel Development

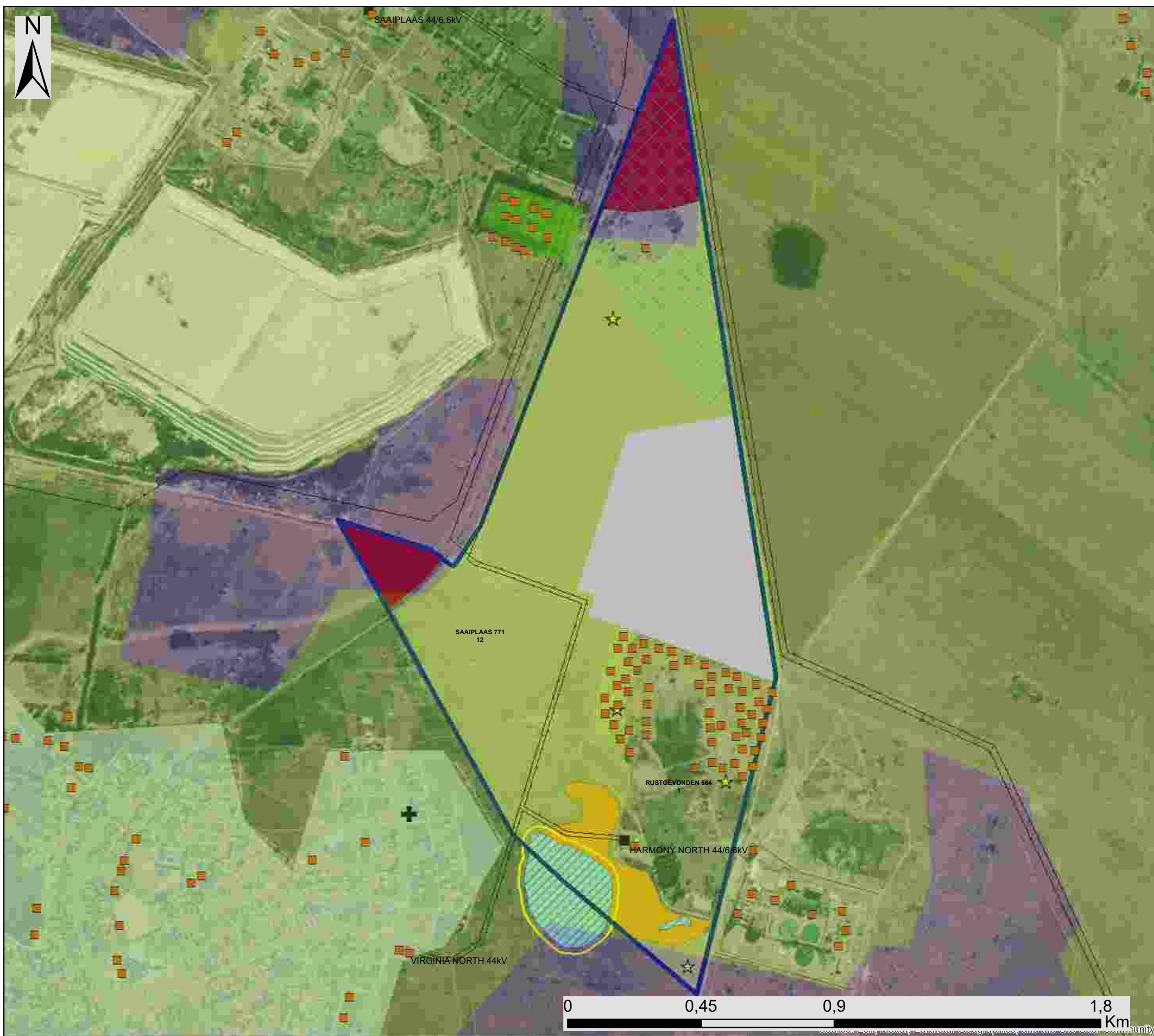
### Properties Linked to Authorised Renewable Energy Facilities (REEA Q1 2022)

- Beatrix Mine Shaft 4 PV Facility
- Farm Onverwag 728 PV Facility
- Beatrix Mine Shaft 2 PV Facility
- Everest PV Facility
- Harmony Tshepong PV Facility
- Hennenman PV Facility
- Farm Uitkyk 509 PV Facility
- Harmony Eland PV Facility
- Harmony Nyala PV Facility

Scale: 1:170 000  
 Projection: GCS\_WGS\_1984  
 Map Ref: Central Cumulative Map







# Harmony Central Plant Solar PV Free State Province

## Sensitivity & CBA Map

### Legend

- Eskom Substation
- Existing Power Line
- Harmony Proposed Development**
- Central Plant Development Area
- Development Footprint
- Environmental Sensitivities**
- Ecological Sensitivity**
- CBA 1/Endangered Grassland (Very High Ecological Sensitivity)
- Wetland (Very High Ecological Sensitivity)
- Wetland 20m Buffer (High Ecological Sensitivity)
- Endangered Grassland (High Ecological Sensitivity)
- CBA1
- Degraded Area
- Heritage Features**
- Archaeology Site
- Avifauna Sensitivity**
- Pan 500m Buffer (High Avifauna)
- Soil Sensitivity**
- Medium Soil Sensitivity
- Social Sensitivity**
- Homestead
- Place of Worship
- Club Du Ville
- Saaiplaas

Scale: 1:12 000  
 Projection: GCS\_WGS\_1984  
 Map Ref: Sensitivity & CBA Map

