

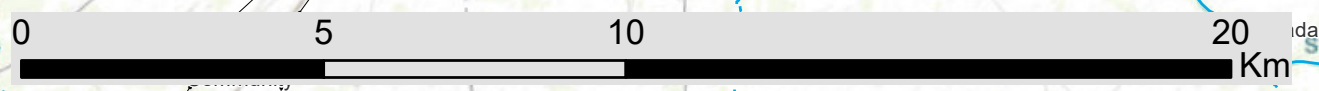
Harmony One Plant Solar PV Free State Province

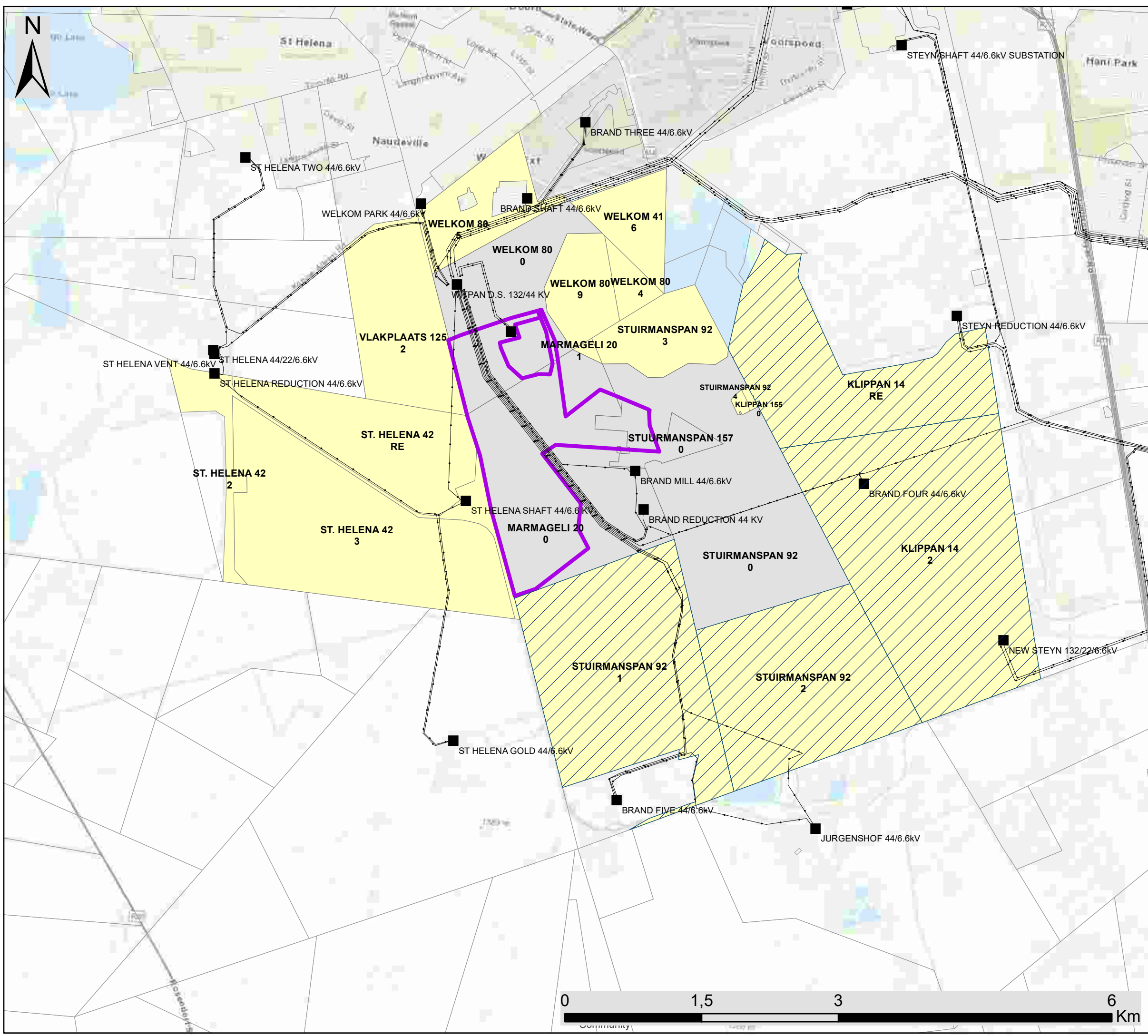
Cumulative Map

Legend

- Town
- Eskom Substation
- Existing Power Line
- Perennial River
- ⋯ Non-perennial River
- Harmony Proposed Developments**
- Harmony One Plant Development Area
- Central Plant Development Area
- Properties Linked to Authorised Renewable Energy Facilities (REEA Q1 2022)**
- Beatrix Mine Shaft 4 PV Facility
- Farm Onverwag 728 PV Facility
- Everest Solar PV Facility
- Farm Uitkyk 509 PV Facility
- Harmony Eland PV Facility
- Harmony Nyala PV Facility

Scale: 1:125 000
 Projection: GCS_WGS_1984
 Map Ref: Harmony Cumulative Map



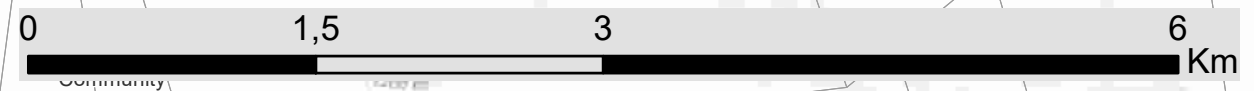


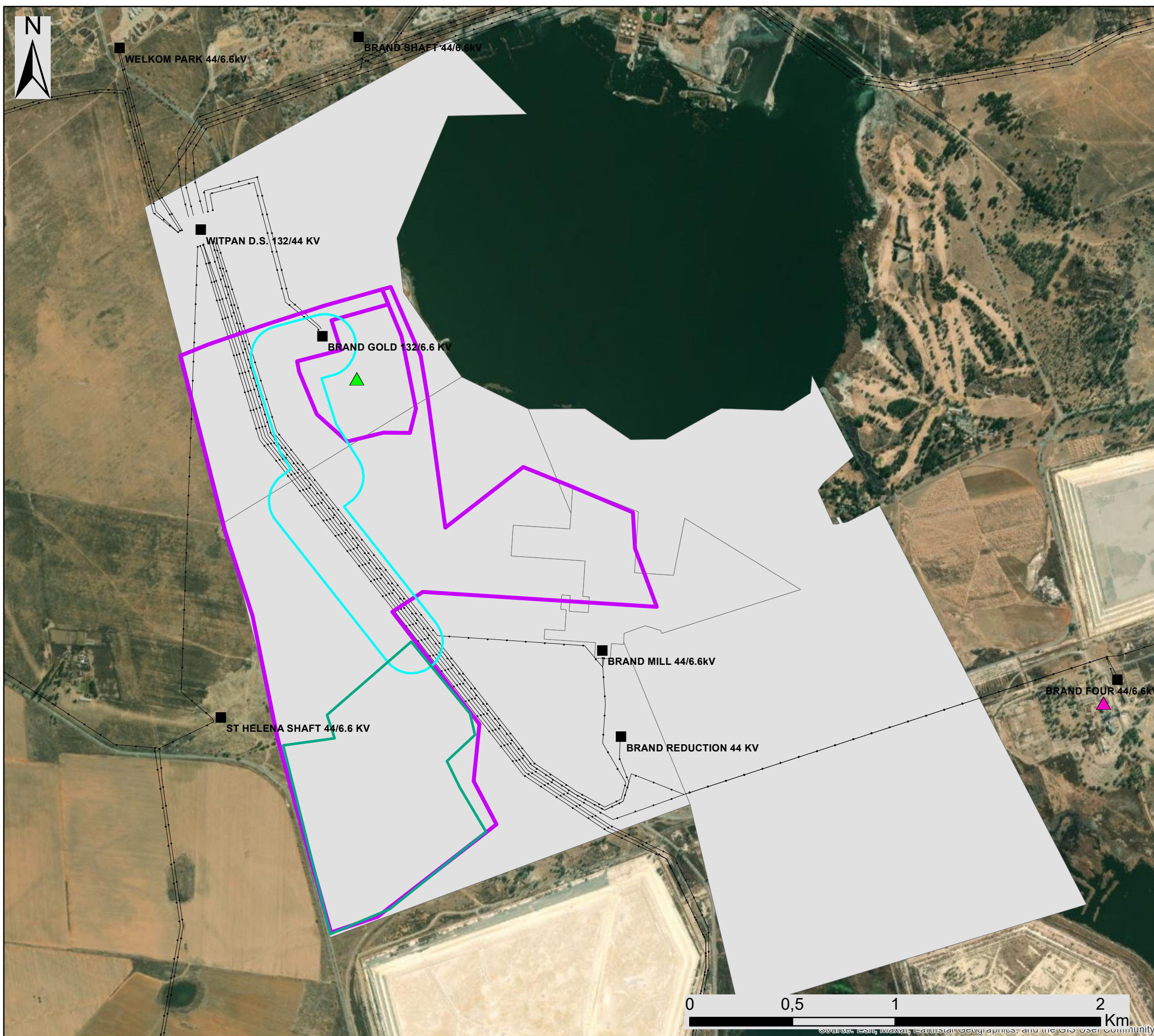
Harmony One Plant Solar PV Free State Province

Landowner Map

- Legend**
- Eskom Substation
 - Existing Power Line
- Harmony Proposed Development**
- Harmony One Plant Development Area
 - Affected Properties (Owned By Harmony)
 - Adjacent Properties
 - Adjacent Properties (Owned by Harmony)
 - Farm Portions

Scale: 1:40 000
 Projection: GCS_WGS_1984
 Map Ref: Harmony Landowner Map





Harmony One Plant Solar PV Free State Province

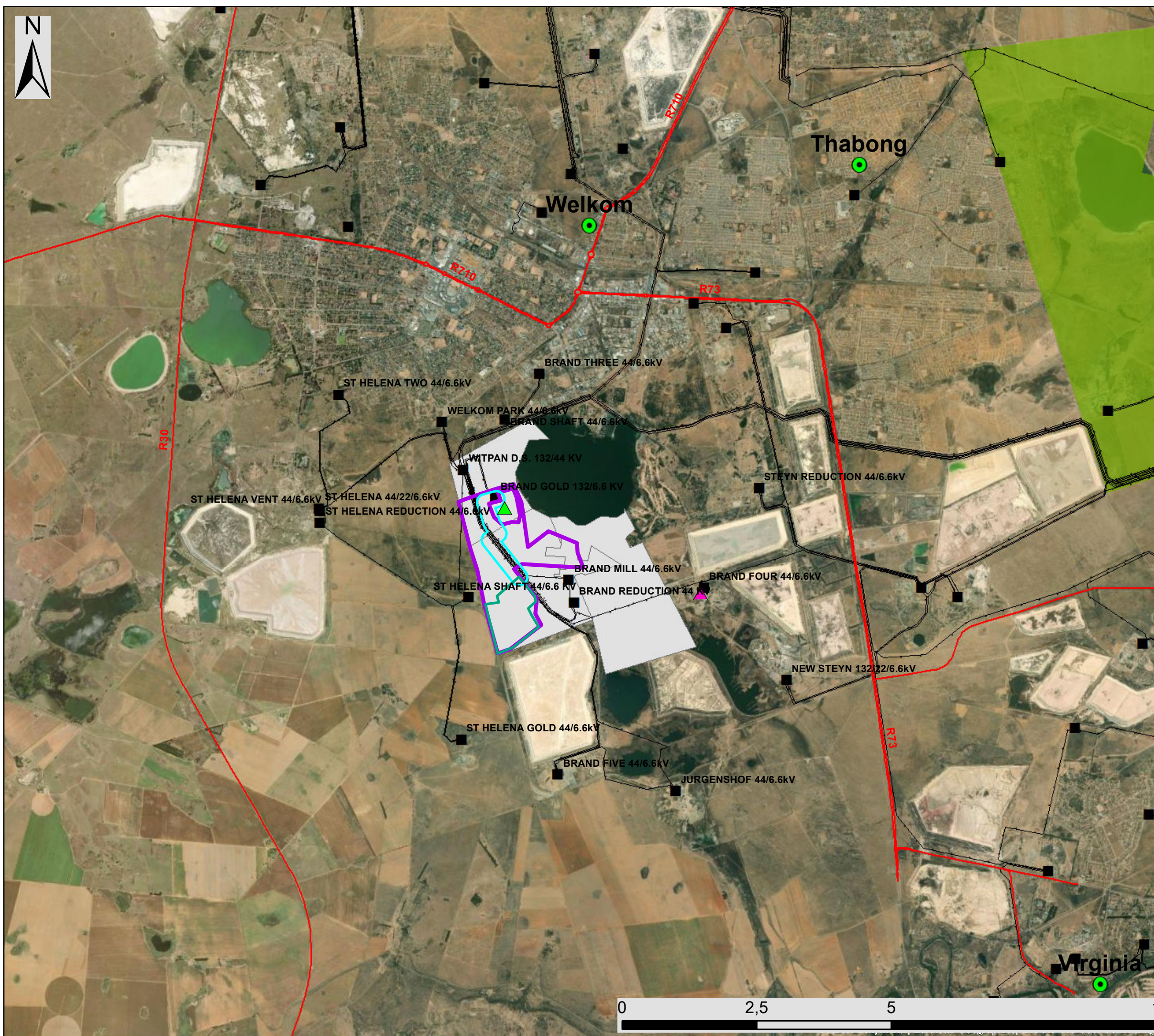
Layout Map

Legend

- ▲ Harmony 1 Gold Plant
 - ▲ Bambanani Mine Welkom
 - Eskom Substation
 - Existing Power Line
- ### Harmony Proposed Development
- Harmony One Plant Development Area
 - Grid Connection Corridor (300m)
 - Development Footprint
 - Affected Properties

Scale: 1:20 000
 Projection: GCS_WGS_1984
 Map Ref: Harmony Layout Map





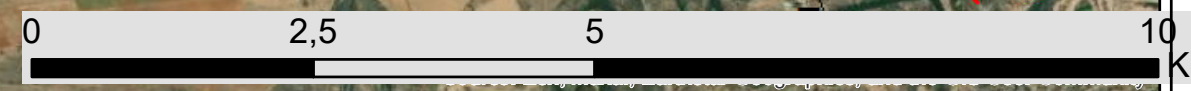
Harmony One Plant Solar PV Free State Province

Locality Map

Legend

-  Town
-  Harmony 1 Gold Plant
-  Bambanani Mine Welkom
-  Eskom Substation
-  Existing Power Line
-  Main Road
-  Thabong Game Farm
- Harmony Proposed Development**
-  Harmony One Plant Development Area
-  Grid Connection Corridor (300m)
-  Development Footprint
-  Affected Properties

Scale: 1:50 000
 Projection: GCS_WGS_1984
 Map Ref: Harmony Locality Map





Harmony One Plant Solar PV Free State Province

Sensitivity & Layout Map

Legend

▲ Harmony 1 Gold Plant

■ Eskom Substation

— Existing Power Line

Harmony Proposed Development

▭ Harmony One Plant Development Area

▭ Grid Connection Corridor (300m)

▭ Development Footprint

Environmental Sensitivities

Heritage Sensitivity

★ Archeology Sites

★ HM4 Archeology Site

▭ HM4 30m Buffer

Avifauna Sensitivity

▭ Pan 500m Buffer (High Avifauna Sensitivity)

▭ Depressions (High Avifauna Sensitivity)

▭ Artificial Dam (Medium Avifauna Sensitivity)

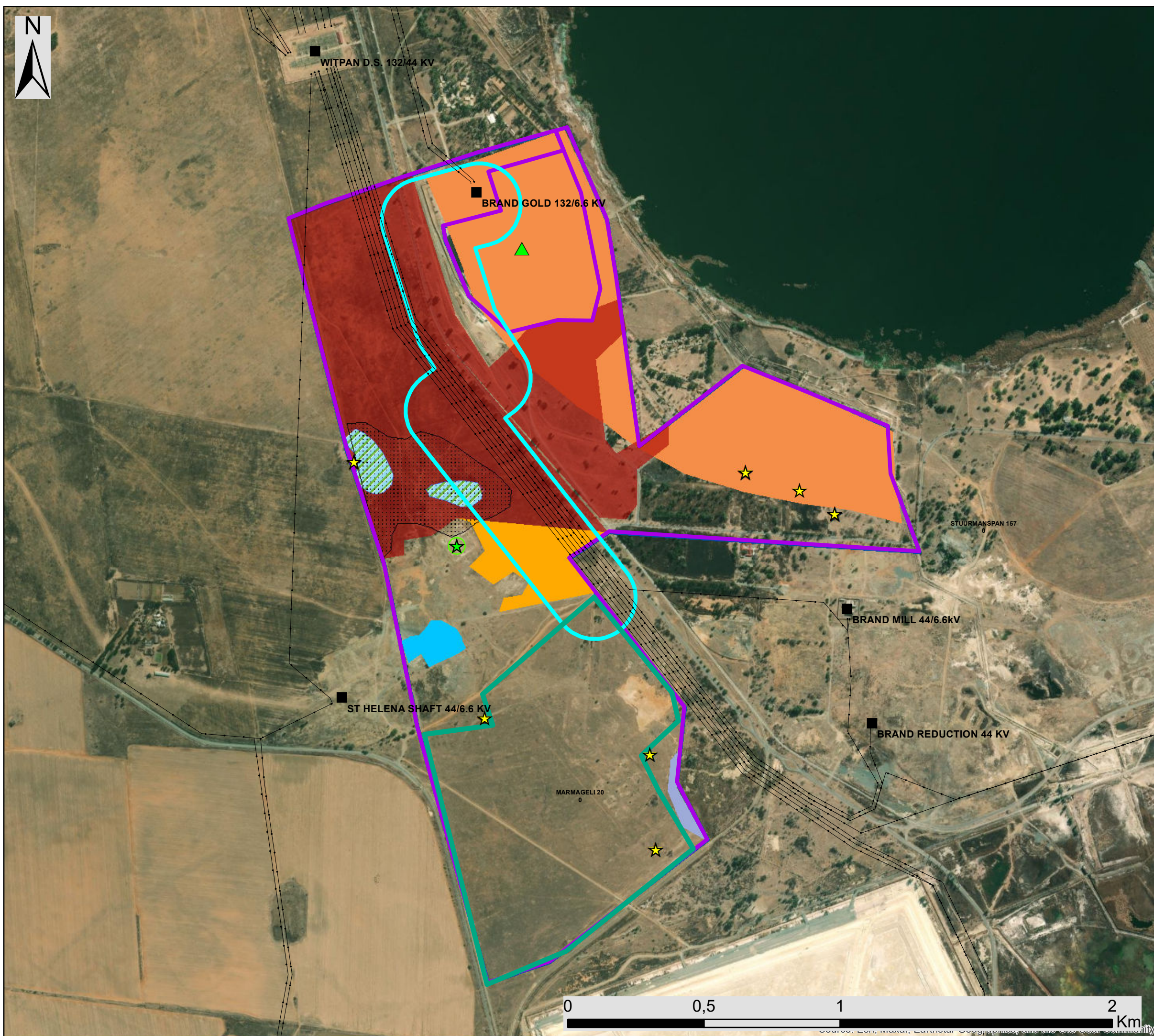
Ecological Sensitivity

▭ CBA 1/Threatened Ecosystem (Very High Ecological Sensitivity)

▭ Wetlands (Very High Ecological Sensitivity)

▭ Threatened Ecosystem (High Ecological Sensitivity)

▭ Artificial Wetland (Medium Ecological Sensitivity)



Scale: 1:14 000
Projection: GCS_WGS_1984
Map Ref: Harmony Sensitivity Map

