

CAROLUS SOLAR PV1 FACILITY

APPENDIX M

Pixley Park Carolus Solar PV 1 Facility De Aar Northern Cape Province

Locality Map

Legend

- Town
- Eskom Substation
- Existing Power Line
- National Road
- Main Road
- Railway Line
- Perennial River
- Non-perennial River

Project Site

- Affected Properties

PV Facility

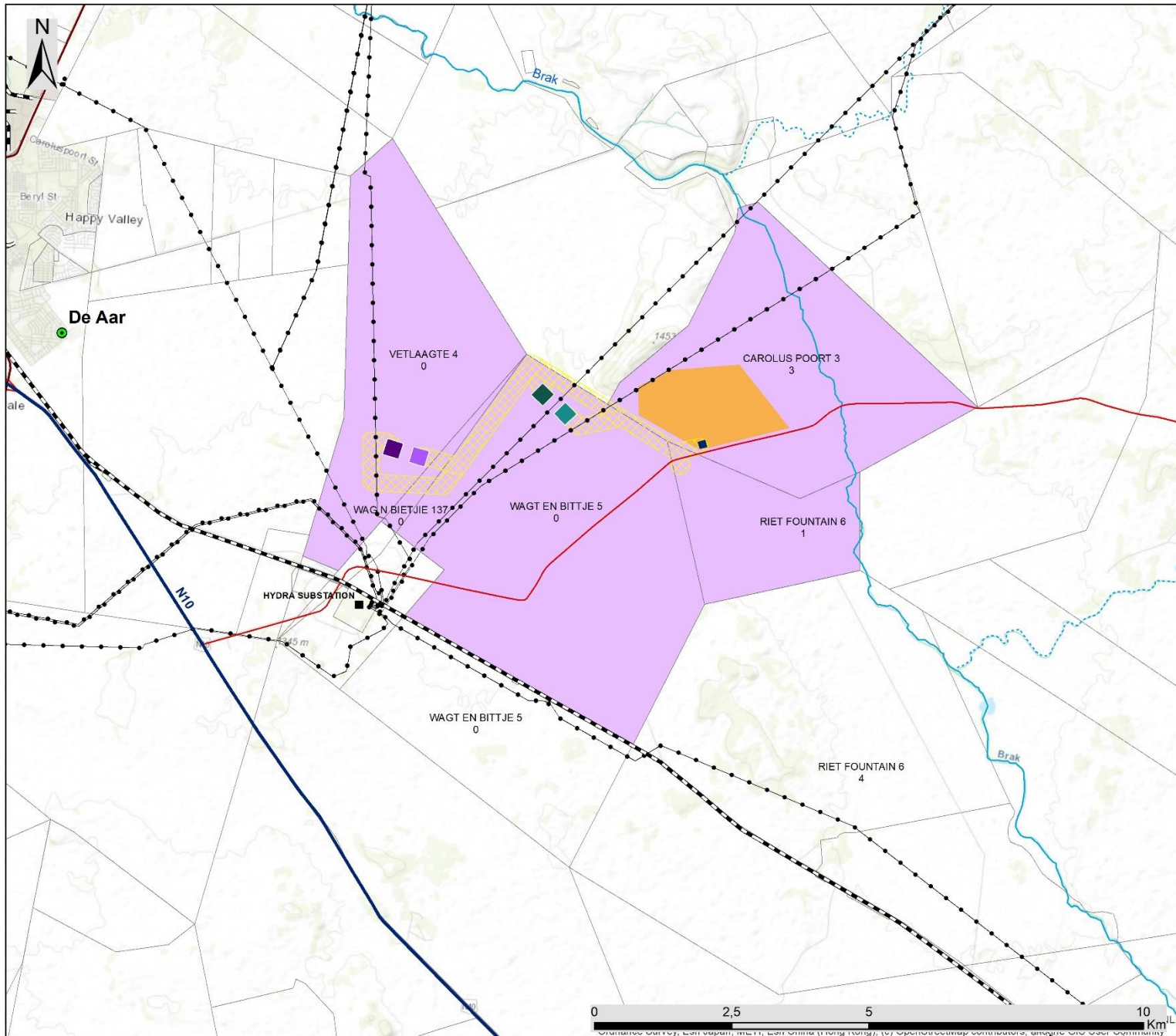
- Carolus Solar PV1 Footprint Approx. 285 ha

Grid Infrastructure

- Proposed Substation
- Vetlaagte - MTS - Preferred
- Vetlaagte - MTS - Alternative
- Wag 'n Bietjie - MTS - Preferred
- Wag 'n Bietjie - MTS - Alternative
- 132 kV Line Buffer

Scale: 1:20 000
Projection: GCS_WGS_1984
Map Ref: Pixley Park Locality Map

savannah
environmental

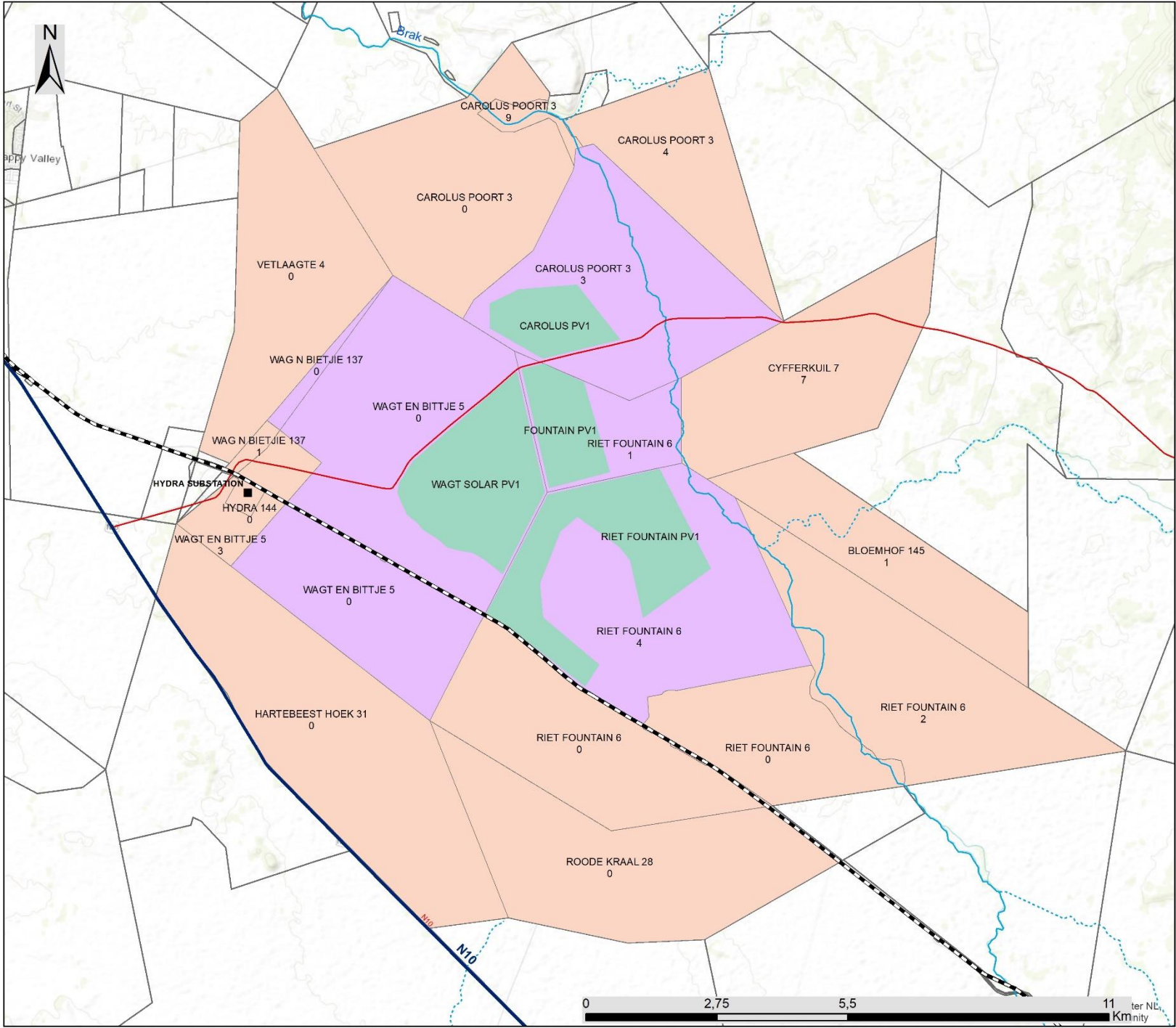


Pixley Park Solar PV Facilities, De Aar, Northern Cape Province

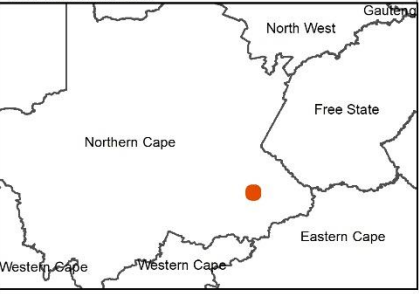
Landowner Map

Legend

- Eskom Substation
 - National Road
 - Main Road
 - Railway Line
 - Perennial River
 - Non-perennial River
- Project Site**
- Proposed PV Facilities
 - Affected Properties
 - Adjacent Properties



Scale: 1:75 474
 Projection: GCS_WGS_1984
 Map Ref: Landowner Map



Carolus Solar PV1 Facility, De Aar, Northern Cape Province

Layout Map

Legend

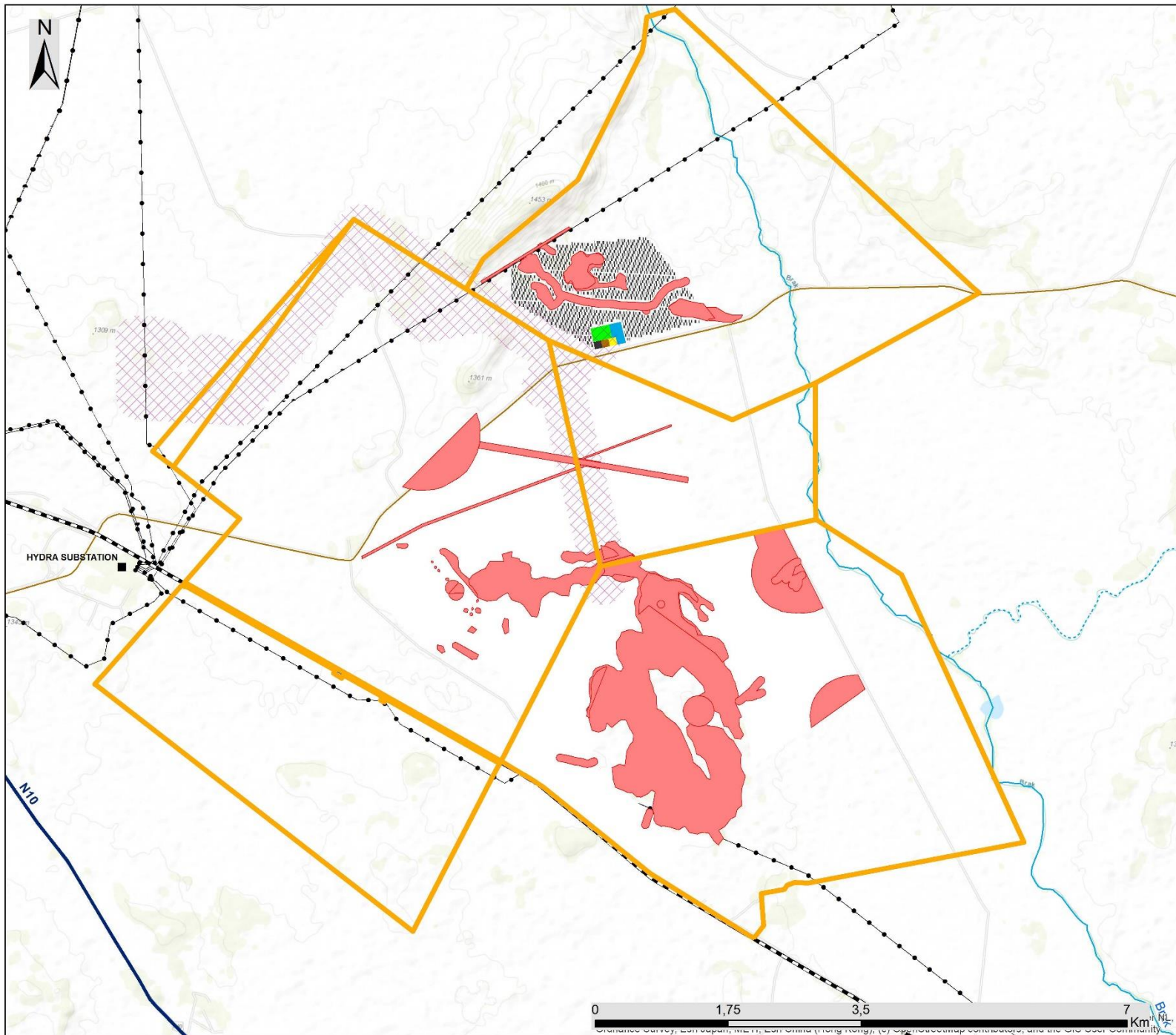
-  Town
-  Eskom Substation
-  Existing Power Line
-  Railway Line
-  National Road
-  Main Road
-  Perennial River
-  Non-perennial River

Project Site

-  Affected Properties
-  Development Layout
-  Restricted area
-  BESS Area
-  IPP Substation
-  Eskom Switching Station
-  Laydown Area
-  O&M Buildings
-  Power Stations

Proposed Grid Connection Route

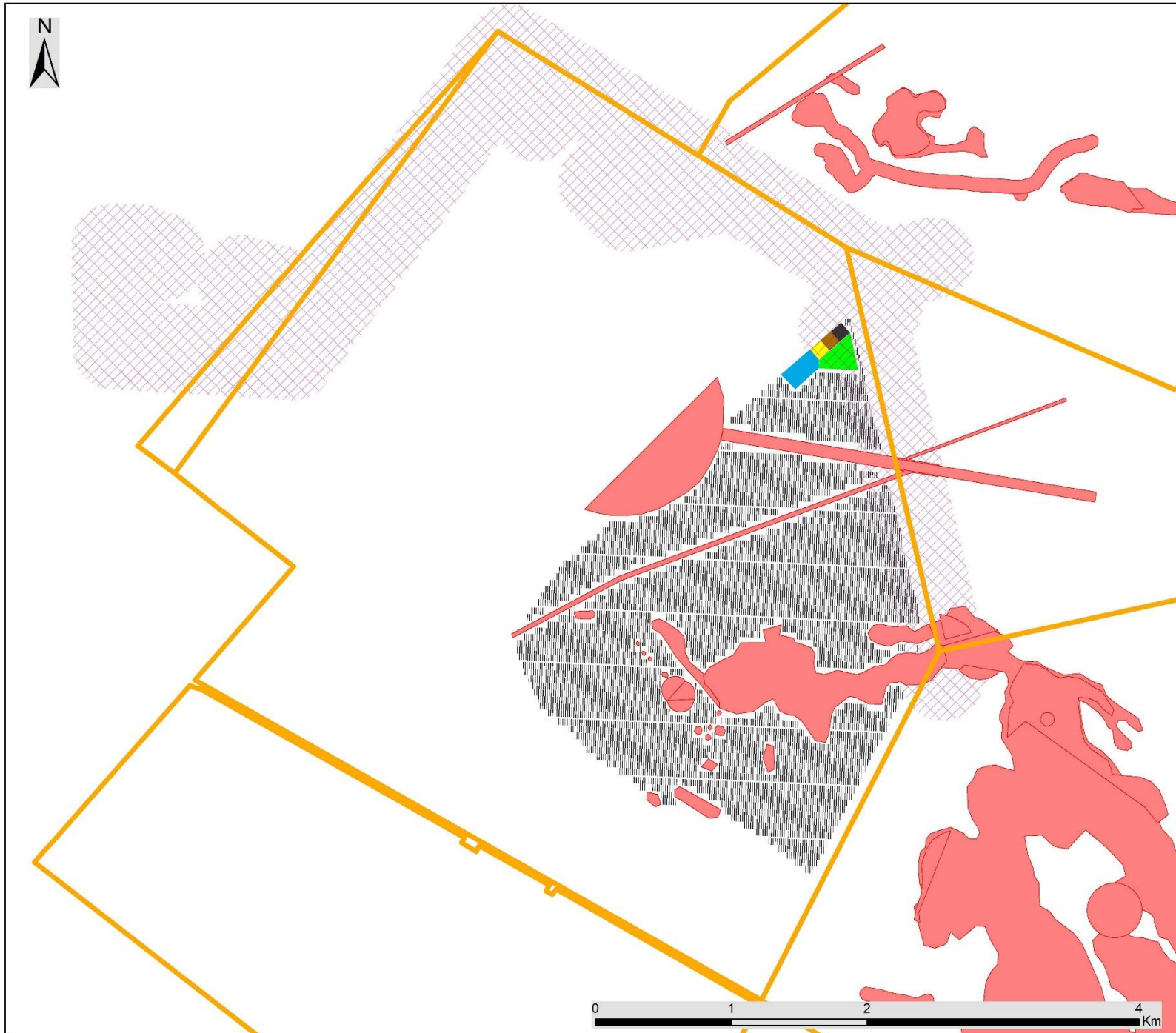
-  Solar PV Grid Connection



Scale: 1:30 000
 Projection: GCS_WGS_1984
 Map Ref: Pixley Park Layout Map

savannah
 environmental





Wagt Solar PV1 Facility, De Aar, Northern Cape Province

Layout Map

Legend

- Town
- Eskom Substation
- Existing Power Line
- Railway Line
- National Road
- Main Road
- Perennial River
- - - Non-perennial River

Project Site

- Affected Properties
- Development Layout
- Restricted area
- BESS Area
- IPP Substation
- Eskom Switching Station
- Laydown Area
- O&M Buildings
- Power Stations

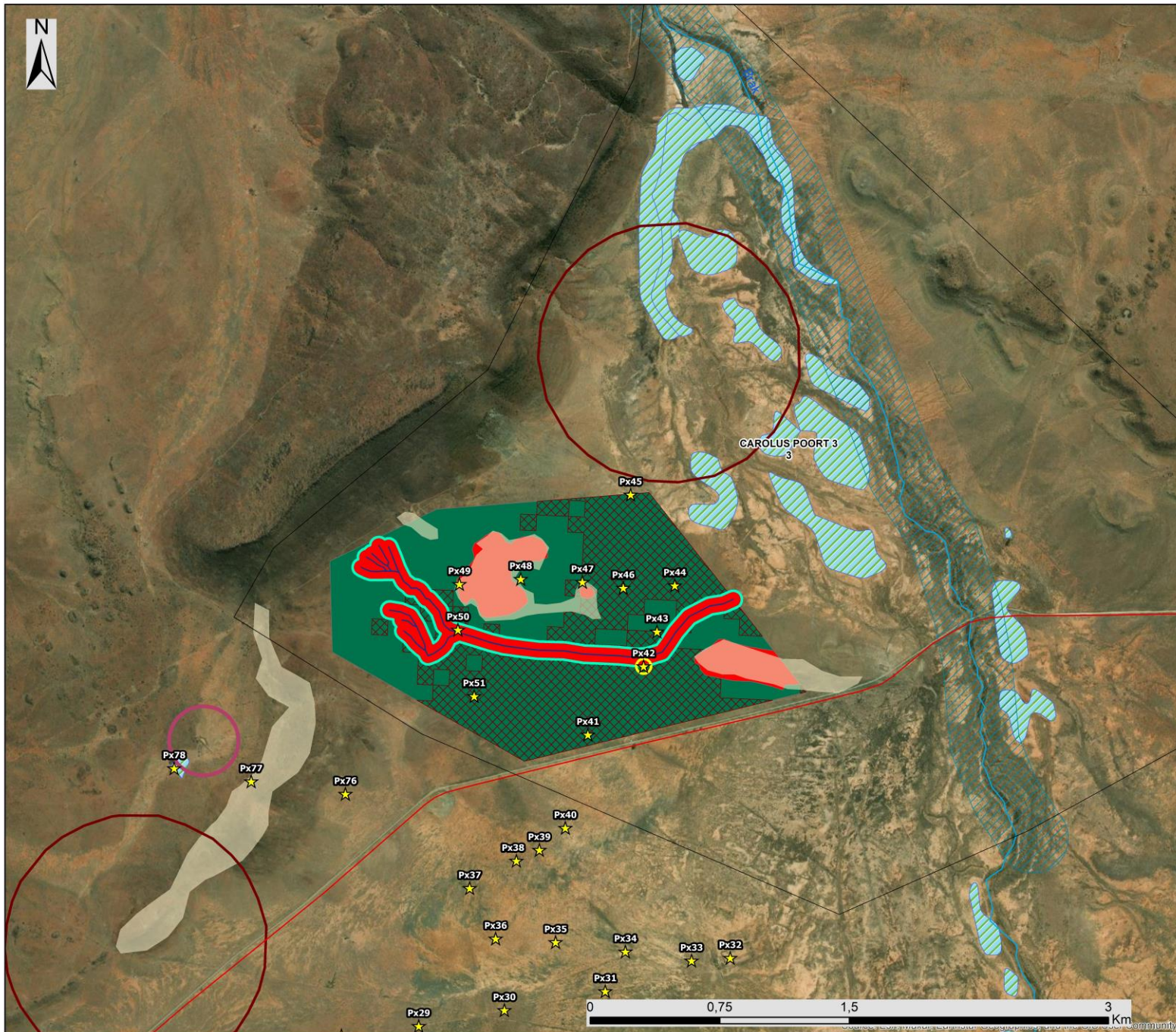
Proposed Grid Connection Route

- Solar PV Grid Connection

Scale: 1:20 000
 Projection: GCS_WGS_1984
 Map Ref: Pixley Park Layout Map

savannah
 environmental





Pixley Park Carolus Solar PV 1 Facility De Aar Northern Cape Province

Sensitivity Map

Legend

- Main Road
- Affected Property
- NFEPA Wetlands
- Heritage Sensitivity**
 - Heritage Site Observations
 - Heritage Site (50m Buffer)
 - Dolerite Outcrop (High Heritage Sensitivity)
- Avifaunal Sensitivities**
 - Dam (200m Buffer)
 - Jackal Buzzard Nest (750m Buffer)
 - Riverine (200m Buffer)
- Ecological Sensitivity**
 - Drainage Line
 - Drainage Line (50m Buffer)
 - Non-developable (High Sensitive Areas)
 - Medium Soil Sensitivity
- Conservation Area**
 - Ecological Support Area (Potentially Developable)

Scale: 1:10 000
Projection: GCS_WGS_1984
Map Ref: Carolus Solar PV 1 Sensitivity Map



Pixley Park Cluster PV Facility, De Aar, Northern Cape Province

Sensitivity Map

Legend

- Town
- Eskom Substation
- Existing Power Line
- Railway Line
- National Road
- Main Road
- Perennial River
- Non-perennial River

Project Site

- Affected Properties

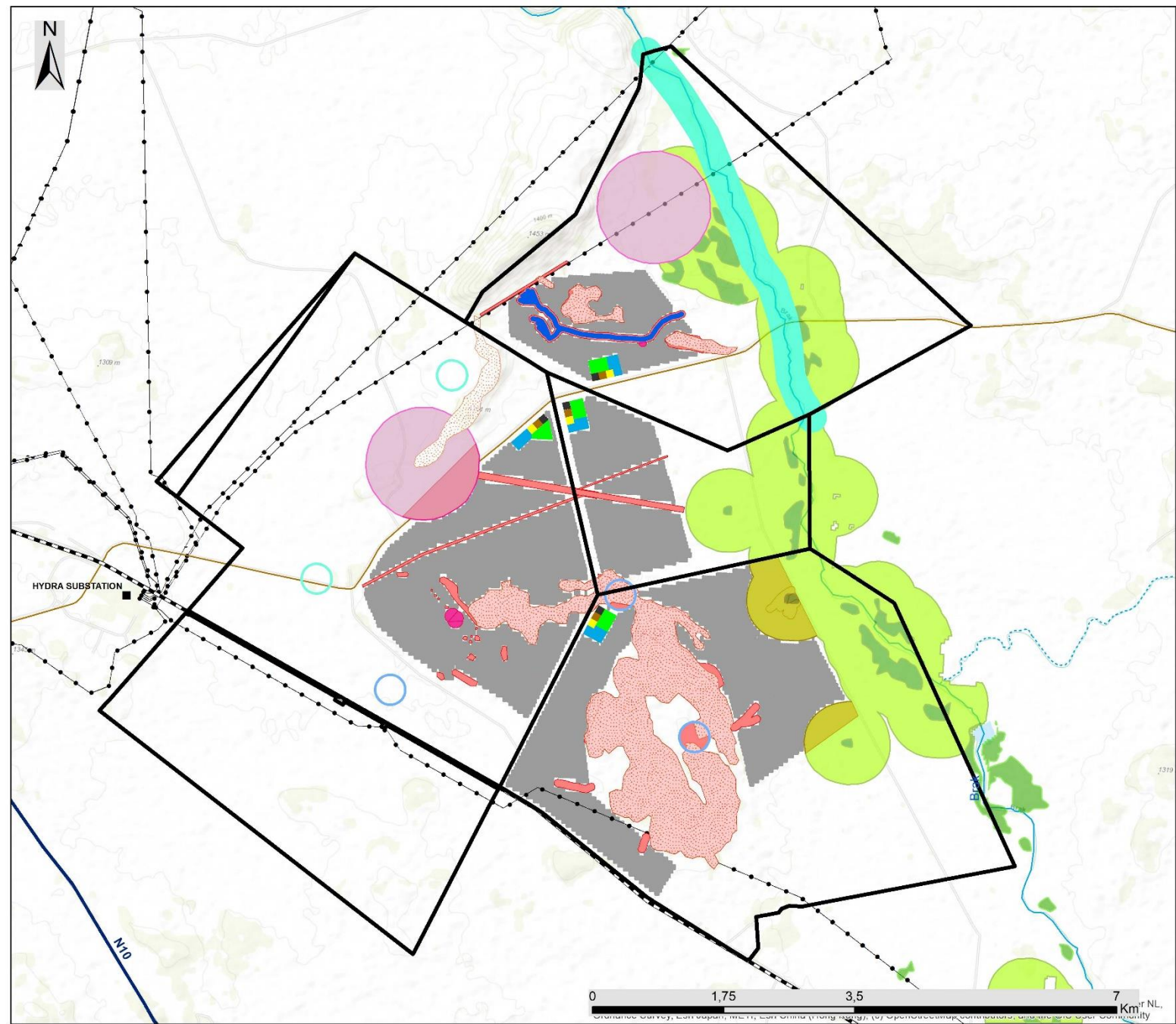
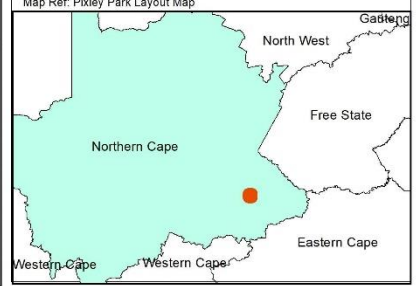
Site Sensitivities

- Stream Buffer
- Dam Buffer
- Wetland Buffer
- Critical Biodiversity Area One
- Critical Biodiversity Area
- Avifauna Buffer
- Soil Sensitivity High
- Heritage Buffer Area
- Riverine Buffer

Development Area

- Development Layout
- BESS Area
- IPP Substation
- Eskom Switching Station
- Laydown Area
- O&M Buildings
- Power Stations


















Scale: 1:47 000
 Projection: GCS_WGS_1984
 Map Ref: Pixley Park Layout Map

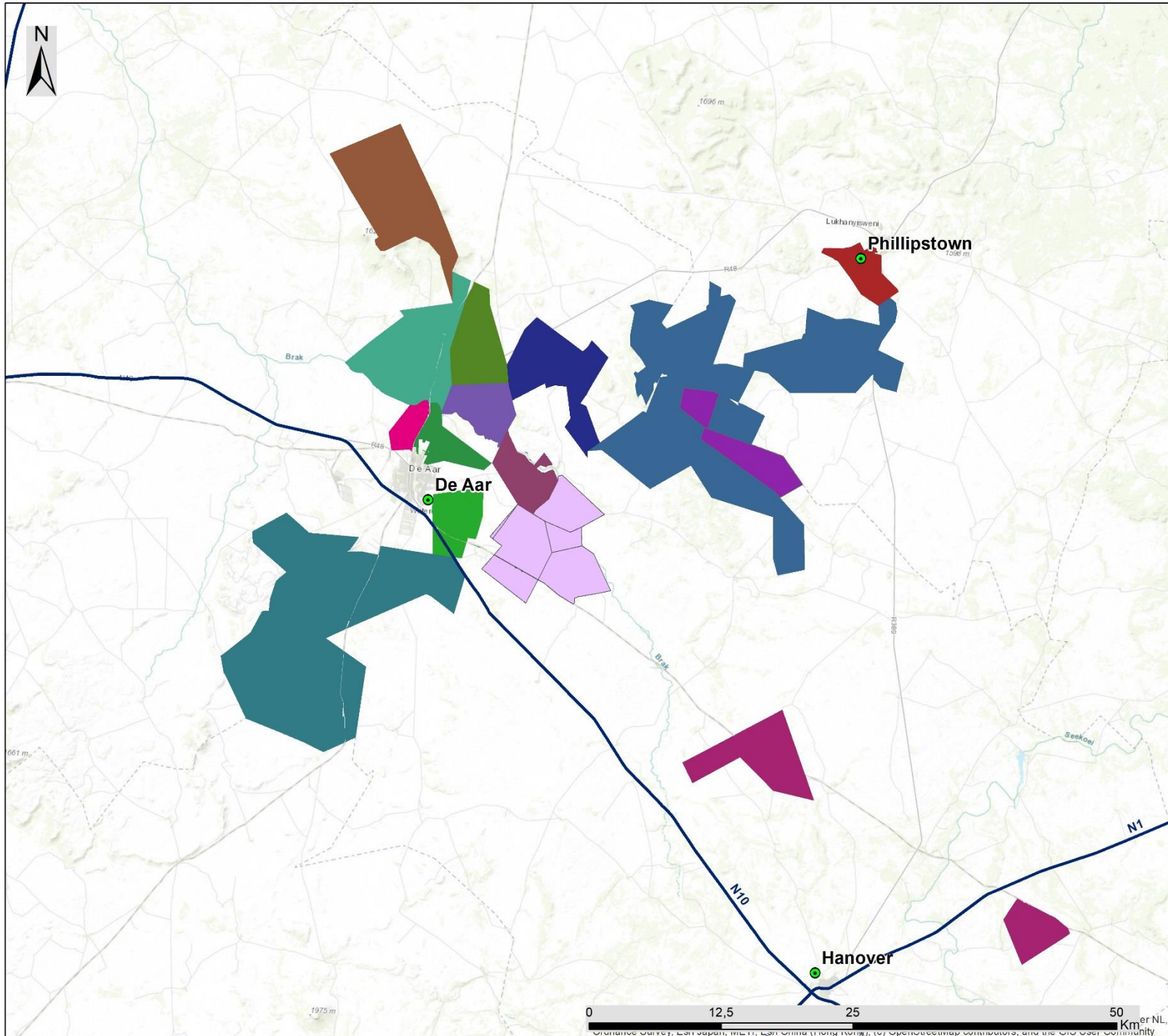


Pixley Park Solar PV Facilities, De Aar, Northern Cape Province

Cumulative Map

Legend

-  Town
 -  National Road
 -  Proposed Pixley Park Solar PV Facilities
- ### Cumulative Renewable Energy Facilities
-  Longyuan Mulilo Wind Energy Facility Maanhaarberg (Operational)
 -  Inca Solar PV Energy Project (Approved)
 -  Renosterberg Solar PV Facility (Approved)
 -  Castle Wind Energy Facility (In Process)
 -  Proposed PV facility on farm Blaauwkratz (In Process)
 -  Proposed PV facility on farm Caroluspoort (In Process)
 -  Proposed PV facility on farm Jakhalsfontein (In Process)
 -  Proposed PV facility on farm Loskop (Approved)
 -  Renosterberg Solar PV Facility (Approved)
 -  Ilanga Lethemba Solar PV Energy Facility (Approved)
 -  Mulilo Renewable Energy Wind Energy Facility (Approved)
 -  Photovoltaic Solar Energy Facility on Paarde Valley Farm (Approved)
 -  Solar PV Plant on farm Paarde (Approved)
 -  Scatec Solar PV Energy Facility (Operational)



Scale: 1:300 000
 Projection: GCS_WGS_1984
 Map Ref: Pixley Park Cumulative Map



0 12,5 25 50 Km
 Orthometric Survey, East African, MGRS, East African (rhombic), (v) Orthometric map contributors, and the GIS User Community