

# WAGT SOLAR PV1 FACILITY

## APPENDIX M

# Pixley Park Wagt Solar PV 1 Facility De Aar Northern Cape Province

## Locality Map

### Legend

- Town
- Eskom Substation
- Existing Power Line
- National Road
- Main Road
- +—+—+—+—+—+— Railway Line
- Perennial River
- - - Non-perennial River

### Project Site

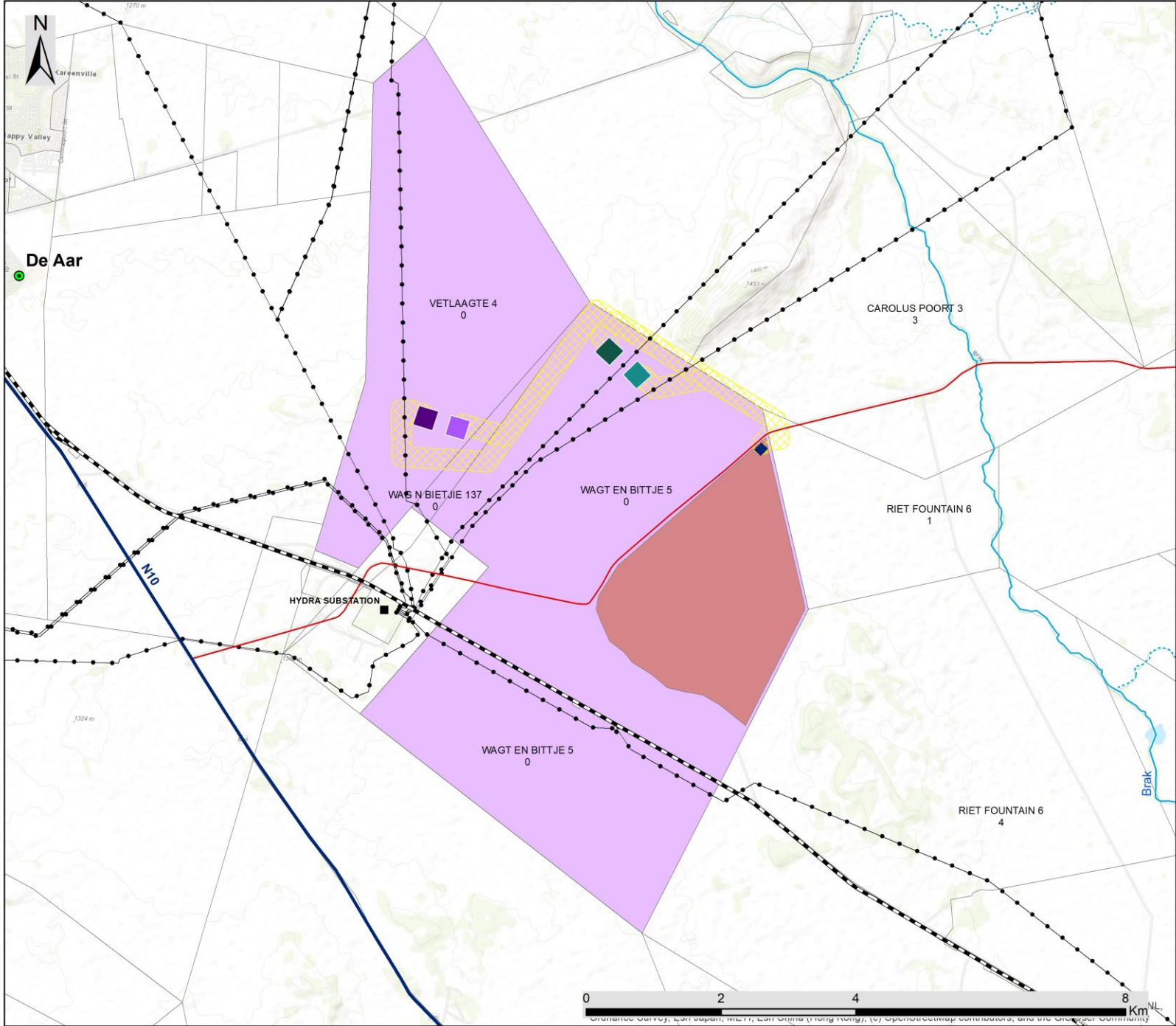
- Affected Properties

### PV Facility

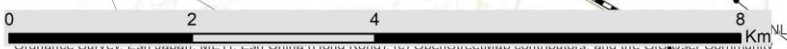
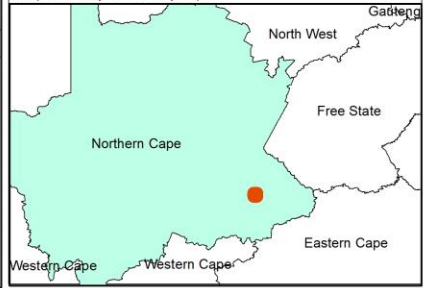
- Wagt Solar PV1 Footprint Approx. 745 ha

### Grid Infrastructure

- Proposed Substation
- Vetlaagte - MTS - Preferred
- Vetlaagte - MTS - Alternative
- Wag 'n Bietjie - MTS - Preferred
- Wag 'n Bietjie - MTS - Alternative
- 132 kV Line Buffer



Scale: 1:50 000  
 Projection: GCS\_WGS\_1984  
 Map Ref: Pixley Park Locality Map

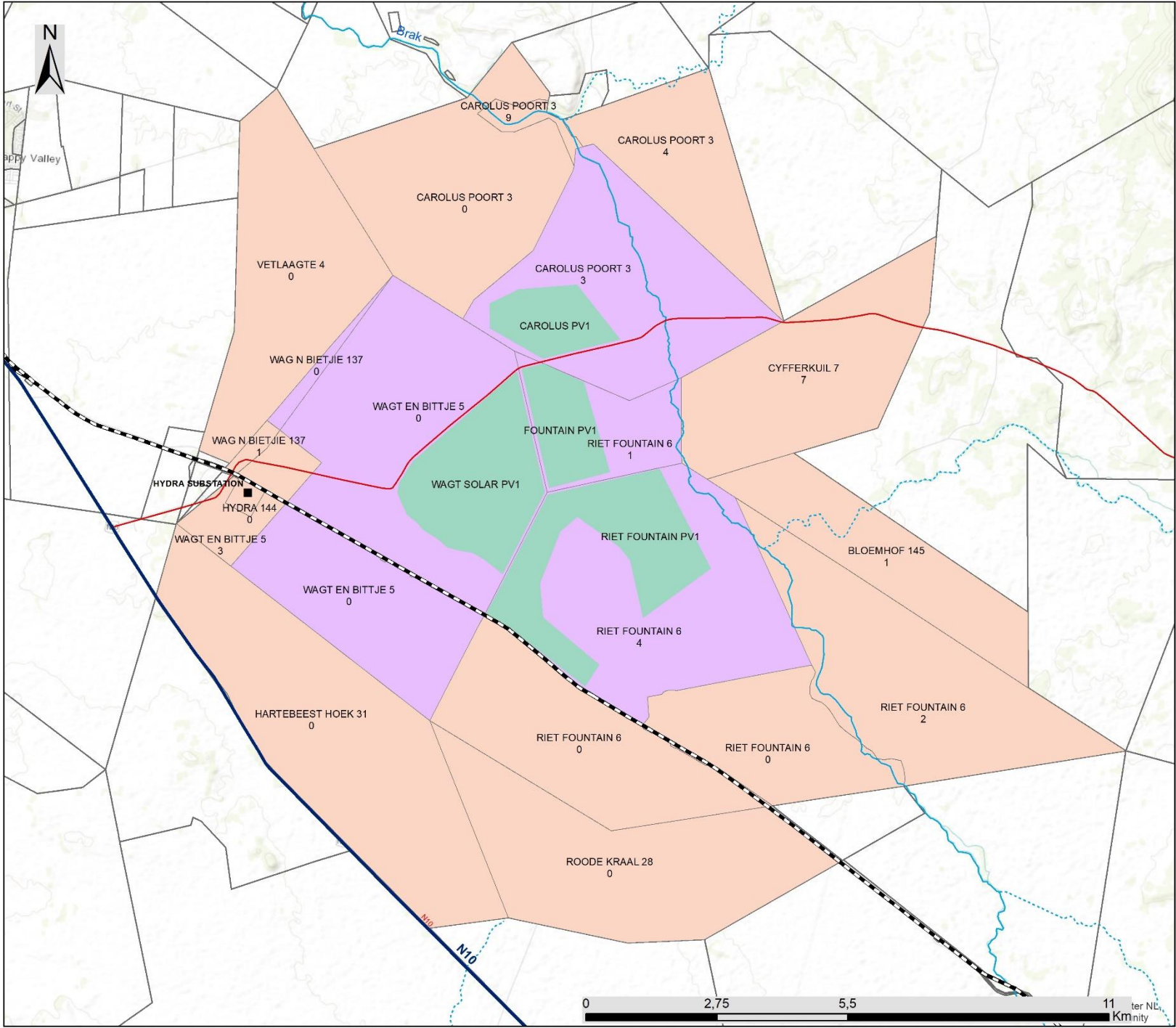


# Pixley Park Solar PV Facilities, De Aar, Northern Cape Province

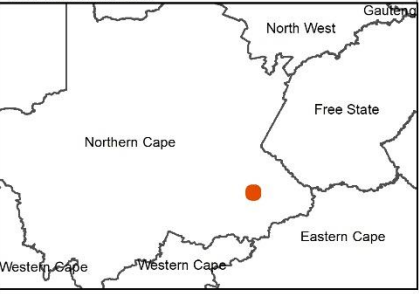
## Landowner Map

### Legend

- Eskom Substation
  - National Road
  - Main Road
  - Railway Line
  - Perennial River
  - Non-perennial River
- Project Site**
- Proposed PV Facilities
  - Affected Properties
  - Adjacent Properties



Scale: 1:75 474  
 Projection: GCS\_WGS\_1984  
 Map Ref: Landowner Map





# Wagt Solar PV1 Facility, De Aar, Northern Cape Province

## Layout Map

### Legend

-  Town
-  Eskom Substation
-  Existing Power Line
-  Railway Line
-  National Road
-  Main Road
-  Perennial River
-  Non-perennial River

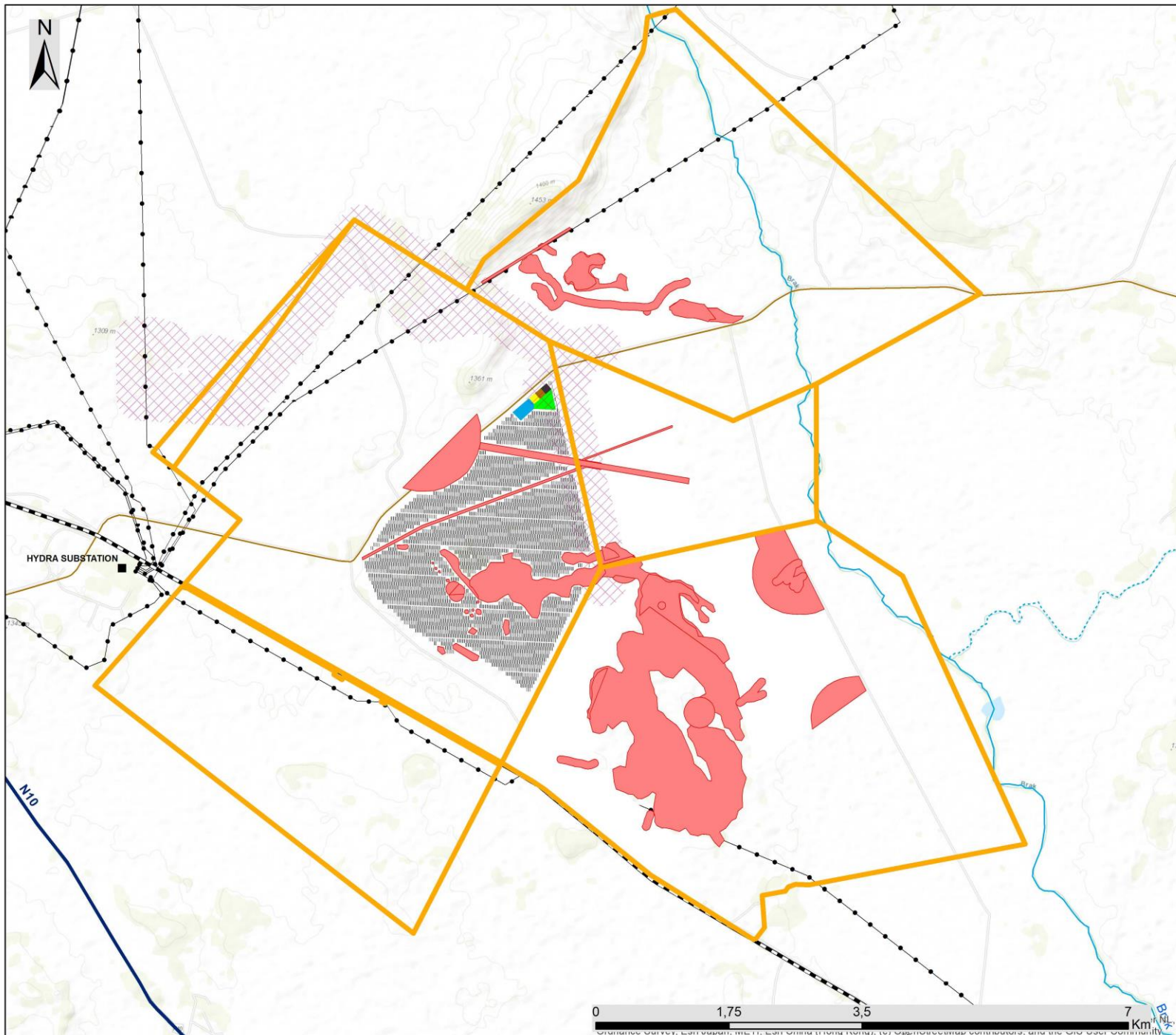
### Project Site

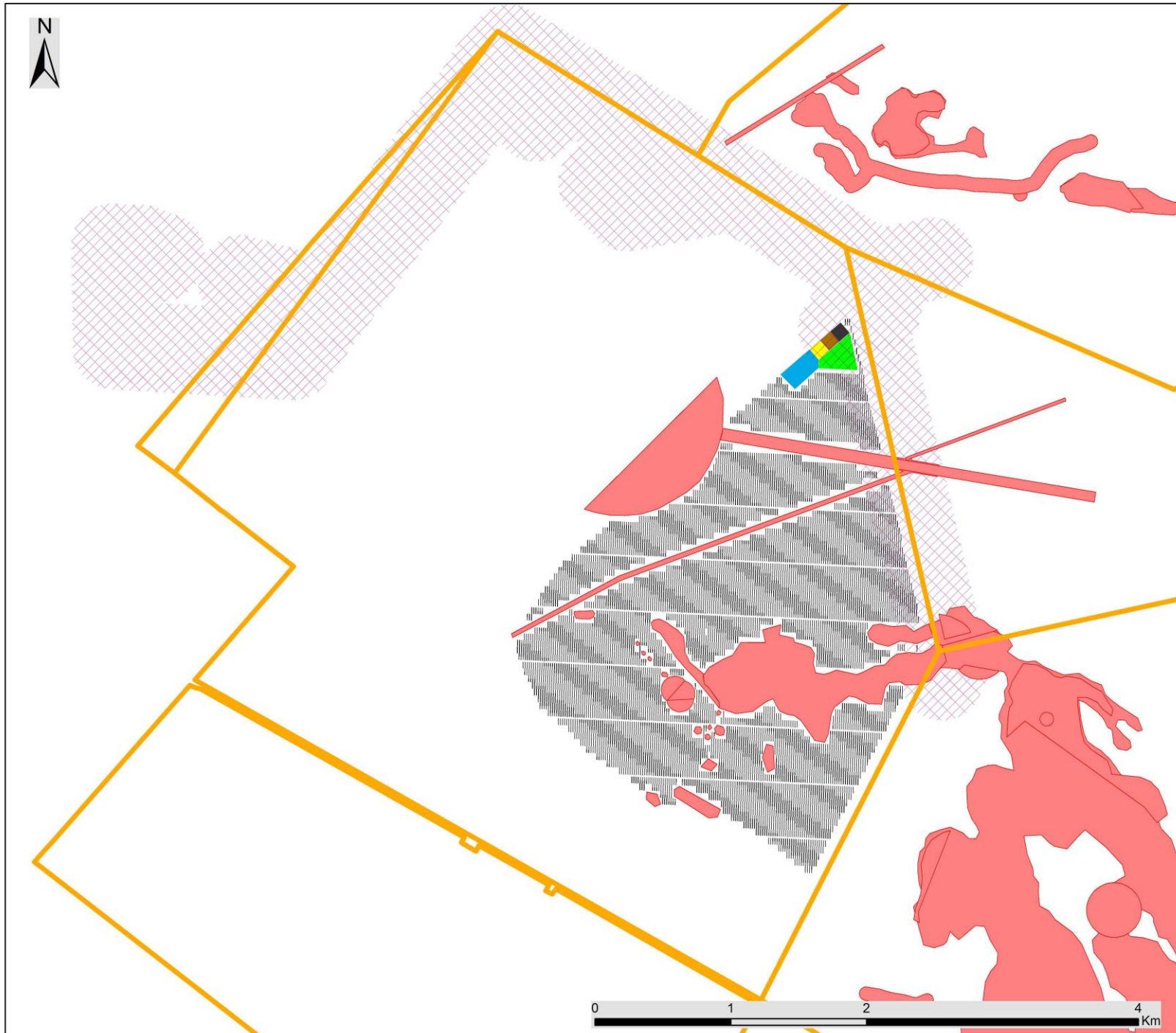
-  Affected Properties
-  Development Layout
-  Restricted area
-  BESS Area
-  IPP Substation
-  Eskom Switching Station
-  Laydown Area
-  O&M Buildings
-  Power Stations

### Proposed Grid Connection Route

-  Solar PV Grid Connection

Scale: 1:20 000  
 Projection: GCS\_WGS\_1984  
 Map Ref: Pixley Park Layout Map





### Wagt Solar PV1 Facility, De Aar, Northern Cape Province

Layout Map

#### Legend

- Town
- Eskom Substation
- Existing Power Line
- Railway Line
- National Road
- Main Road
- Perennial River
- Non-perennial River

#### Project Site

- Affected Properties
- Development Layout
- Restricted area
- BESS Area
- IPP Substation
- Eskom Switching Station
- Laydown Area
- O&M Buildings
- Power Stations

#### Proposed Grid Connection Route

- Solar PV Grid Connection

Scale: 1:20 000  
 Projection: GCS\_WGS\_1984  
 Map Ref: Pixley Park Layout Map

**savannah**  
environmental



# Pixley Park Wagt Solar PV 1 Facility De Aar Northern Cape Province

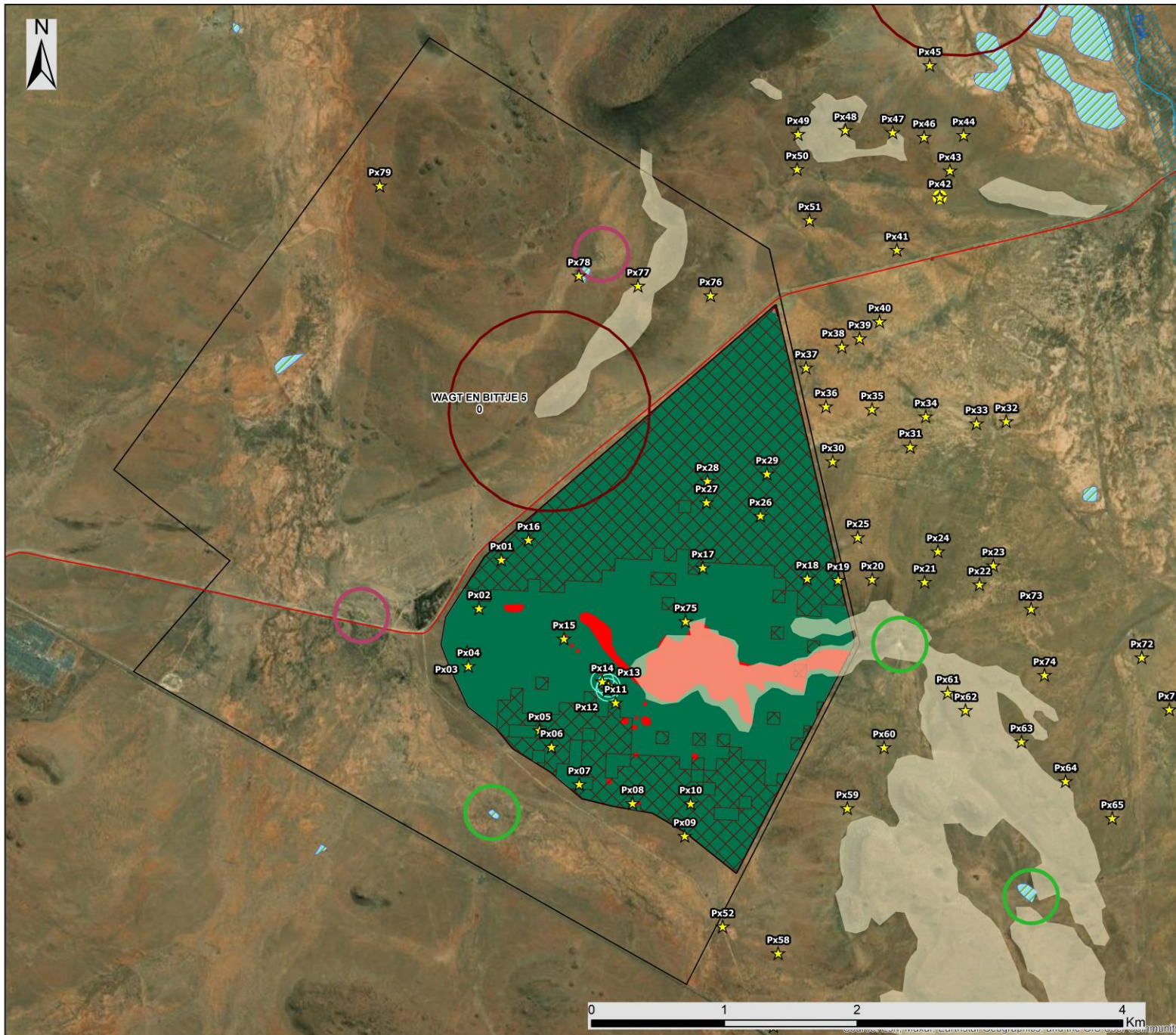
## Sensitivity Map

### Legend

- Main Road
- Affected Property
- NFEPA Wetlands
- Heritage Sensitivity**
- ★ Heritage Site Observations
- Heritage Site (100m Buffer)
- Heritage Site (50m Buffer)
- Dolerite Outcrop (High Heritage Sensitivity)
- Avifaunal Sensitivities**
- Dam Buffer (200m Buffer)
- Wetland Buffer (200m Buffer)
- Jackal Buzzard Nest (750m Buffer)
- Riverine (200m Buffer)
- Ecological Sensitivity**
- High Sensitive Areas
- Medium Soil Sensitivity
- Conservation Area**
- Ecological Support Area (Developable Area)

Scale: 1:20 000  
 Projection: GCS\_WGS\_1984  
 Map Ref: Wagt Solar PV 1 Sensitivity Map

savannah  
 environmental





# Pixley Park Cluster PV Facility, De Aar, Northern Cape Province

## Sensitivity Map

### Legend

- Town
- Eskom Substation
- Existing Power Line
- +— Railway Line
- National Road
- Main Road
- Perennial River
- - - Non-perennial River

### Project Site

- Affected Properties

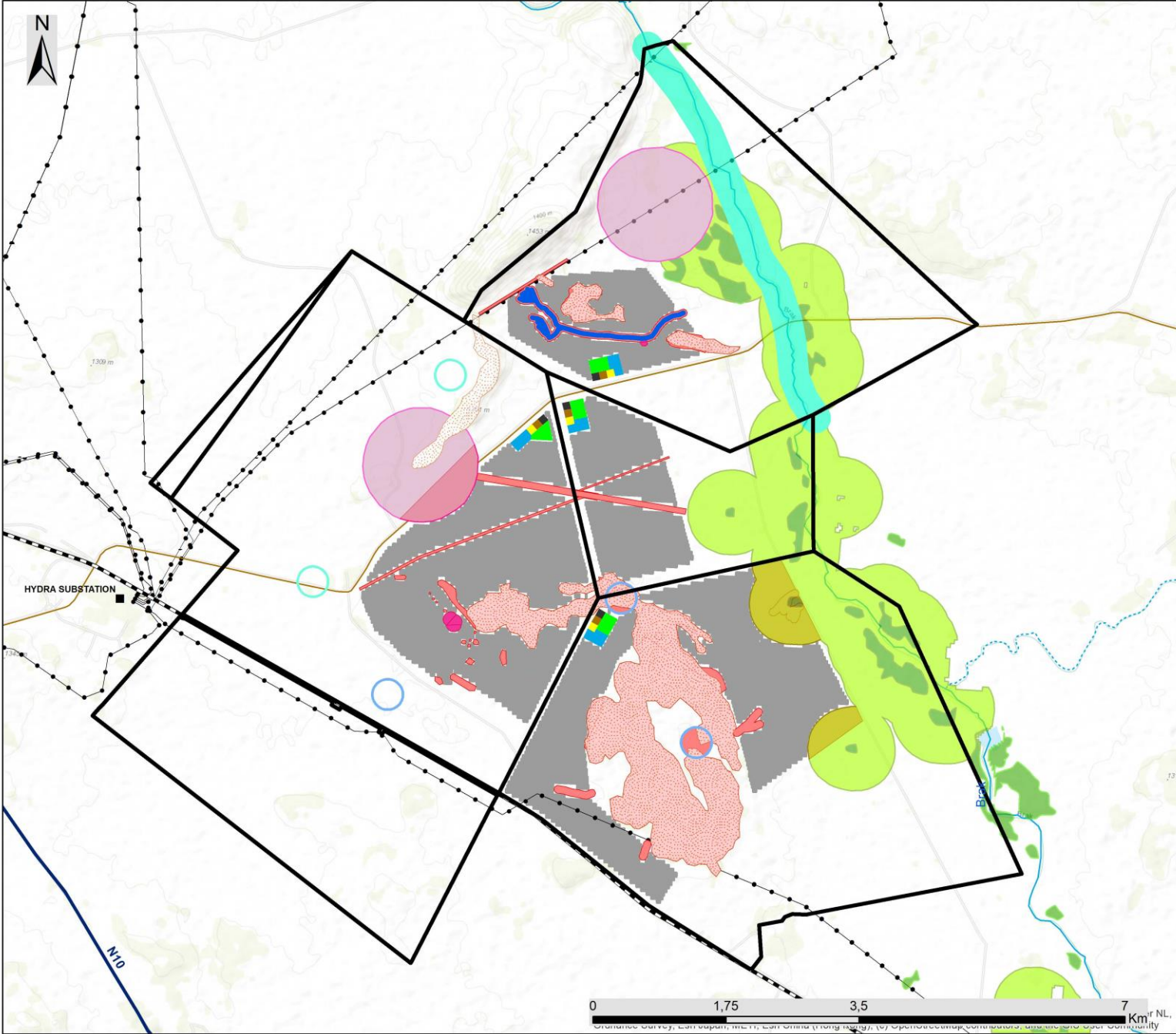
### Site Sensitivities

- Stream Buffer
- Dam Buffer
- Wetland Buffer
- Critical Biodiversity Area One
- Critical Biodiversity Area
- Avifauna Buffer
- Soil Sensitivity High
- Heritage Buffer Area
- Riverine Buffer

### Development Area

- Development Layout
- BESS Area
- IPP Substation
- Eskom Switching Station
- Laydown Area
- O&M Buildings
- Power Stations

Scale: 1:70 000  
 Projection: GCS\_WGS\_1984  
 Map Ref: Pixley Park Layout Map

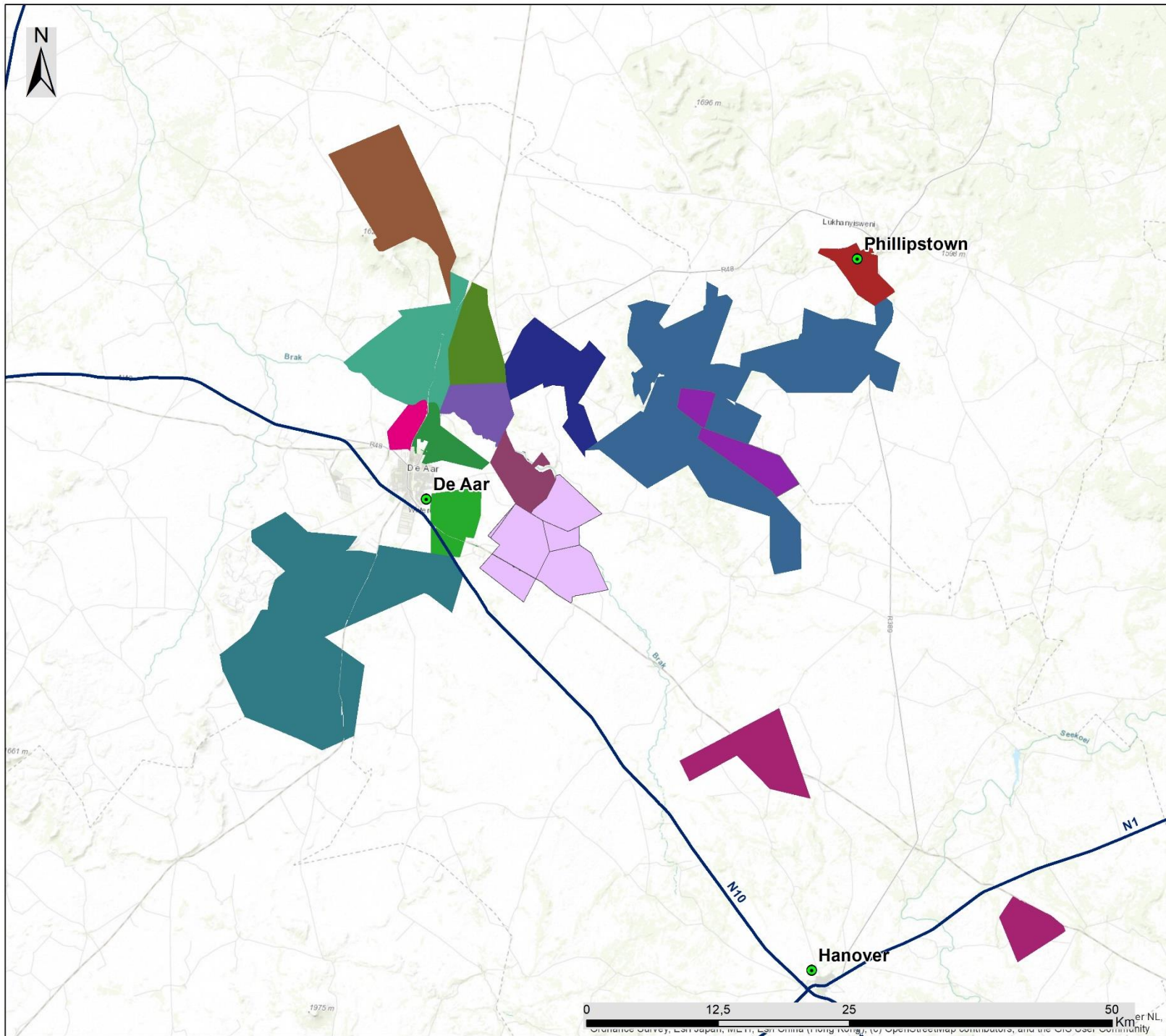


# Pixley Park Solar PV Facilities, De Aar, Northern Cape Province

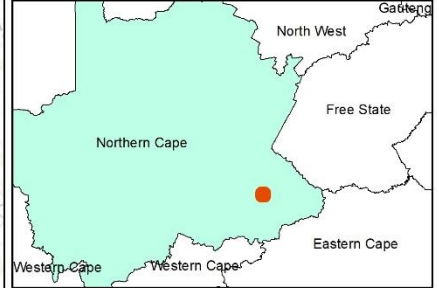
## Cumulative Map

### Legend

- Town
  - National Road
  - Proposed Pixley Park Solar PV Facilities
- ### Cumulative Renewable Energy Facilities
- Longyuan Mulilo Wind Energy Facility Maanhaarberg (Operational)
  - Inca Solar PV Energy Project (Approved)
  - Renosterberg Solar PV Facility (Approved)
  - Castle Wind Energy Facility (In Process)
  - Proposed PV facility on farm Blaauwkratz (In Process)
  - Proposed PV facility on farm Caroluspoort (In Process)
  - Proposed PV facility on farm Jakhalsfontein (In Process)
  - Proposed PV facility on farm Loskop (Approved)
  - Renosterberg Solar PV Facility (Approved)
  - Ilanga Lethemba Solar PV Energy Facility (Approved)
  - Mulilo Renewable Energy Wind Energy Facility (Approved)
  - Photovoltaic Solar Energy Facility on Paarde Valley Farm (Approved)
  - Solar PV Plant on farm Paarde (Approved)
  - Scatec Solar PV Energy Facility (Operational)



Scale: 1:300 000  
 Projection: GCS\_WGS\_1984  
 Map Ref: Pixley Park Cumulative Map



0 12,5 25 50 Km  
Orthometric Survey, East African, MGRS, East African (rhombic), (v) Orthometric map coordinates, and the GCS 1984 Community