

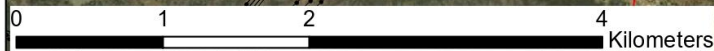
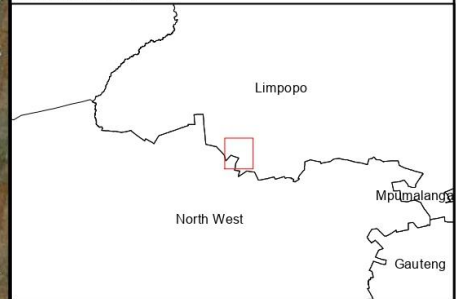
# SBPM PV Facility Limpopo Province

## Feasibility Area Map

- Existing Substations
- - - Non-perennial river
- Perennial river
- Existing Powerlines
- Main Road
- Facility Substation and BESS Hub
- SBPM PV Feasibility Area
- Grid Connection Corridor (200m wide)
- Project Site
- Provincial Boundary

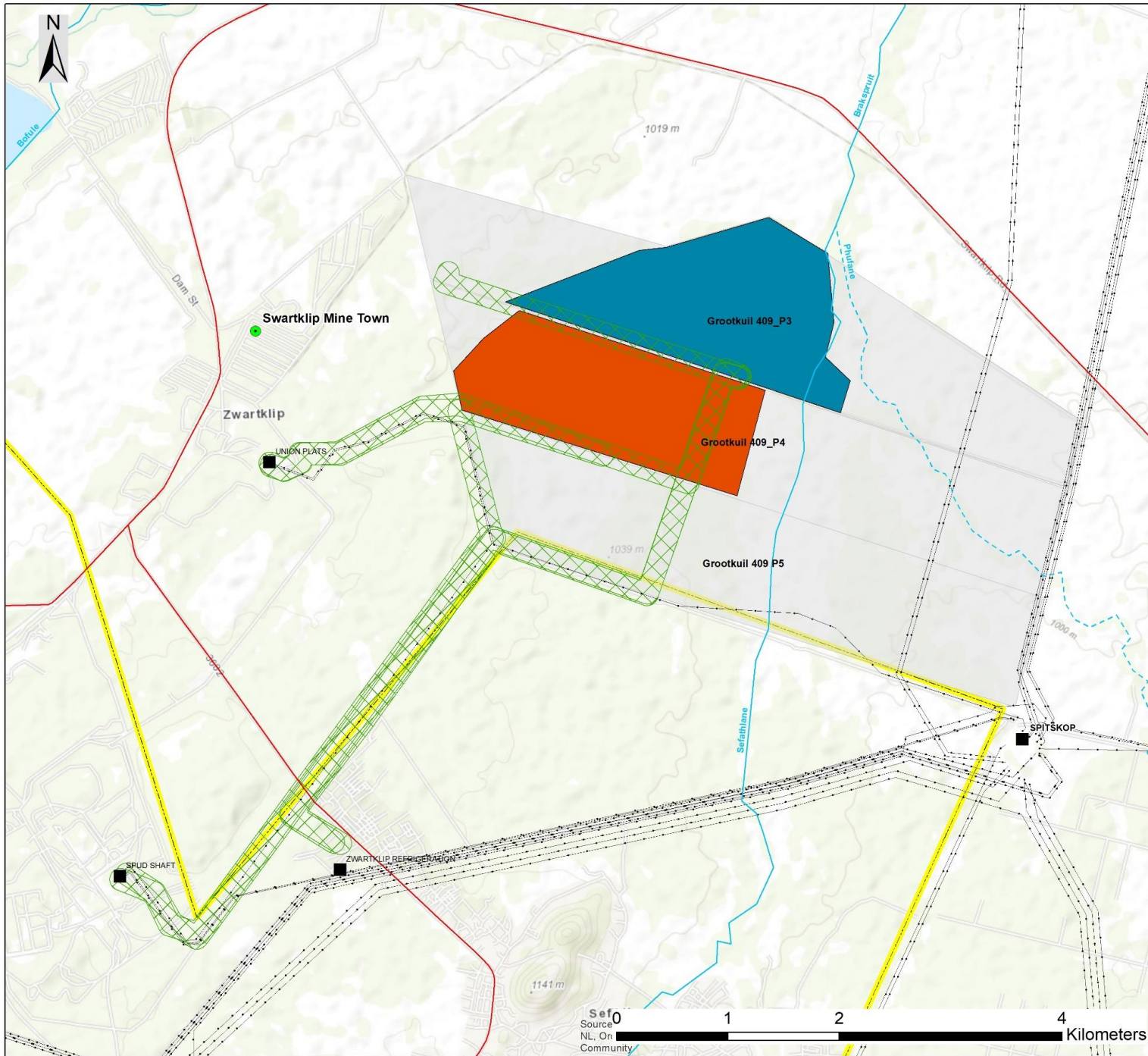
Scale: 1:30000  
 Projection: WGS 84  
 Ref: SBPM Feasibility Area

savannah  
 environmental



Source: Esri, Maxar, GeoEye, Earthstar Geographics, CNES/Airbus DS, USDA, USGS, AeroGRID, IGN, and the GIS User Community





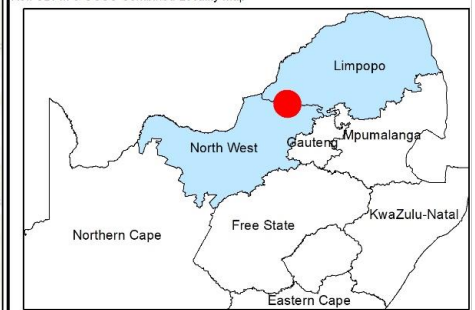
## SBPM & SCSC PV Facilities Limpopo and North West Provinces

### Combined Locality Map

- Town
- Existing Substations
- - - Non-perennial river
- Perennial river
- - - Existing Powerlines
- Main Road
- Project Site
- SBPM PV Facility
- SCSC PV Facility
- Grid Connection Corridor (200m wide)
- Provincial Boundary

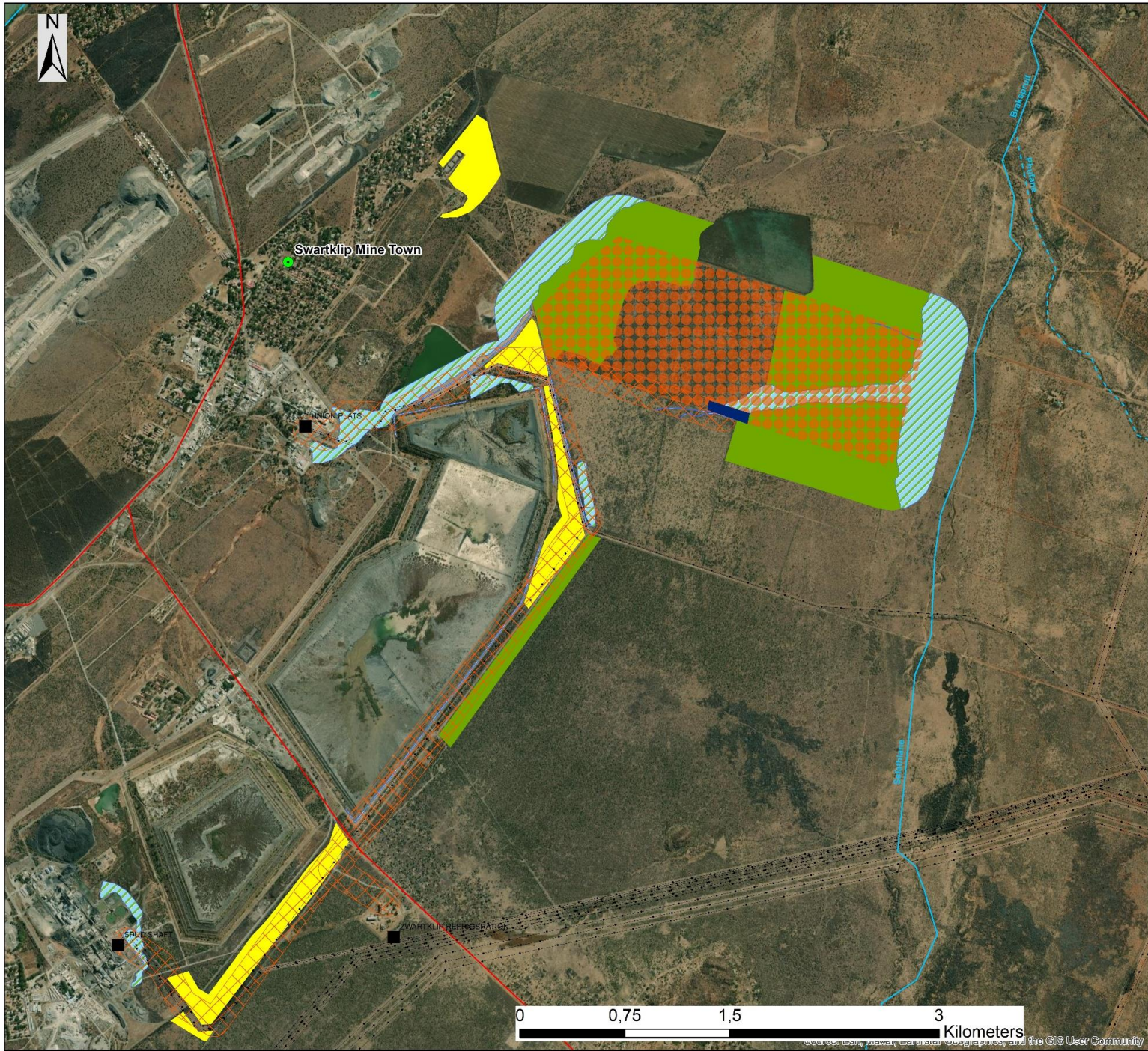
Scale: 1:30000  
 Projection: GCS\_WGS\_1984  
 Ref. SBPM & SCSC Combined Locality Map

savannah  
 environmental



sef0  
 Source:  
 NL, Or  
 Community





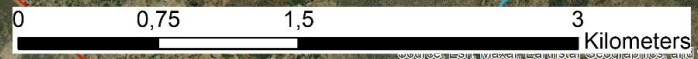
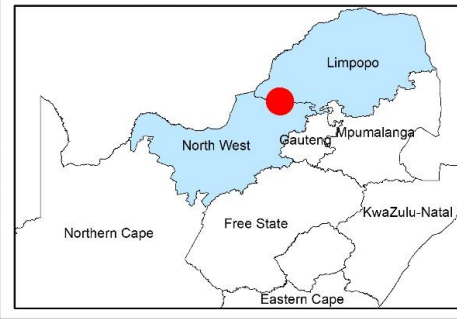
## SBPM PV Facility Limpopo and North West Provinces Preliminary Sensitivity Map

- Town
- Existing Substations
- Non-perennial river
- Perennial river
- Existing Powerlines
- Main Road
- SBPM PV Facility
- Grid Connection Corridor (200m wide)
- Facility Substation and BESS Hub

### Environmental Sensitivities

- Wetlands (High Sensitivity)
- Degraded Bushveld (High Ecological & Avifauna Sensitivity)
- Fragmented Bushveld (Medium Ecological & Avifauna Sensitivity)

Scale: 1:30000  
 Projection: GCS\_WGS\_1984  
 Ref: SBPM Preliminary Sensitivity Map



Sources: ESRI, Garmin, GeoEye, IGN, AerGRID, GeoEye, and the GIS User Community



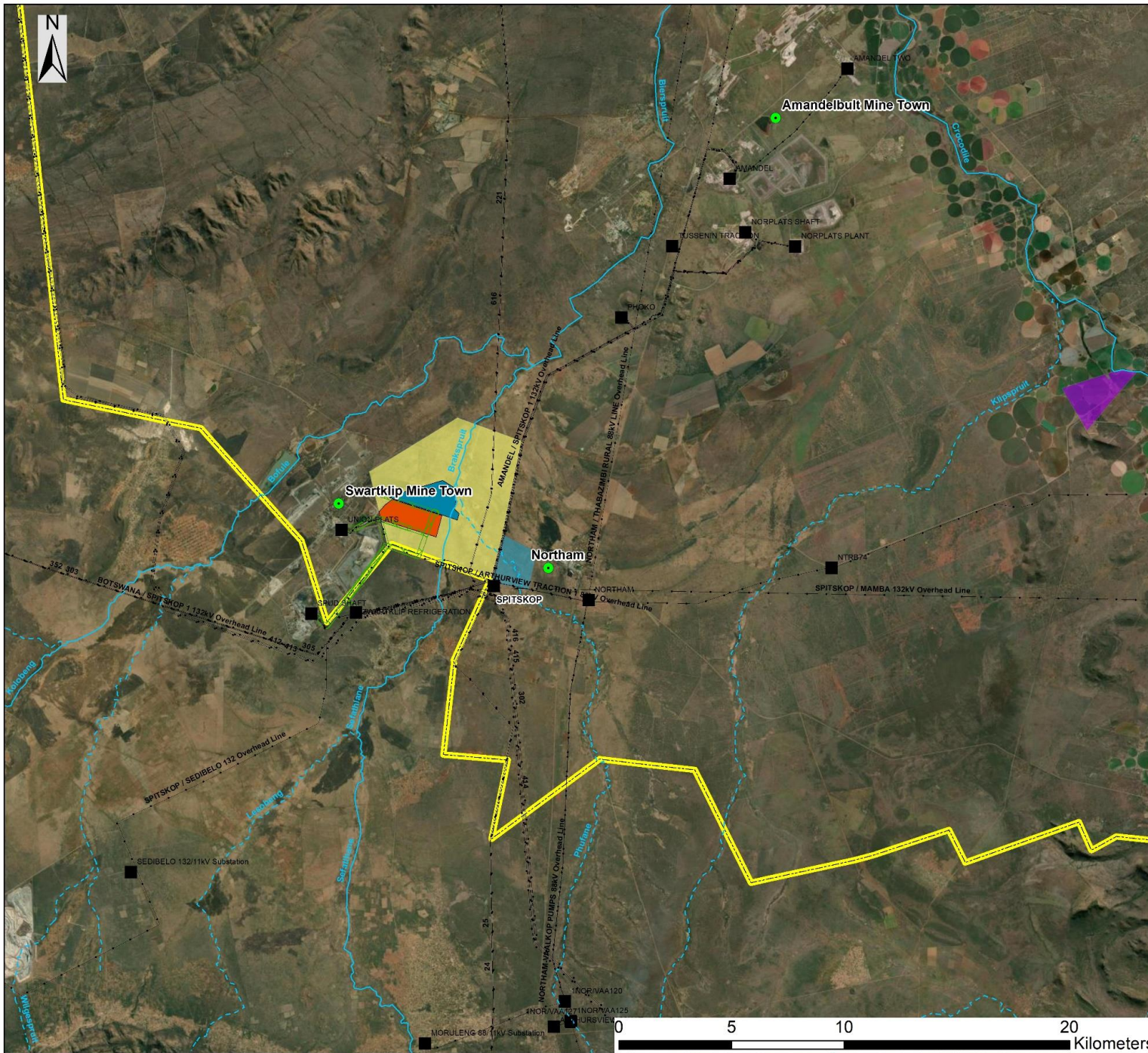
# SBPM & SCSC PV Facilities Limpopo and North West Provinces

## Cumulative Map

- Town
- Existing Substations
- Non-perennial river
- Perennial river
- Existing Powerlines
- SBPM PV Facility
- SCSC PV Facility
- Grid Connection Corridor (200m wide)
- Provincial Boundary

## Other Known Renewable Energy Facilities

- Platinum Solar Park (75MW)
- Liverpool Solar Energy Plant (10MW)
- Spitskop Solar Park (75MW)



Scale: 1:30000  
 Projection: GCS\_WGS\_1984  
 Ref: SBPM & SCSC Combined Cumulative Map

