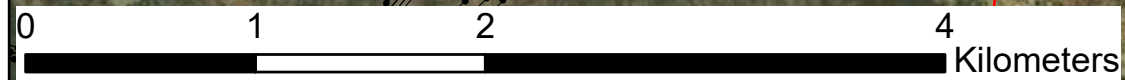
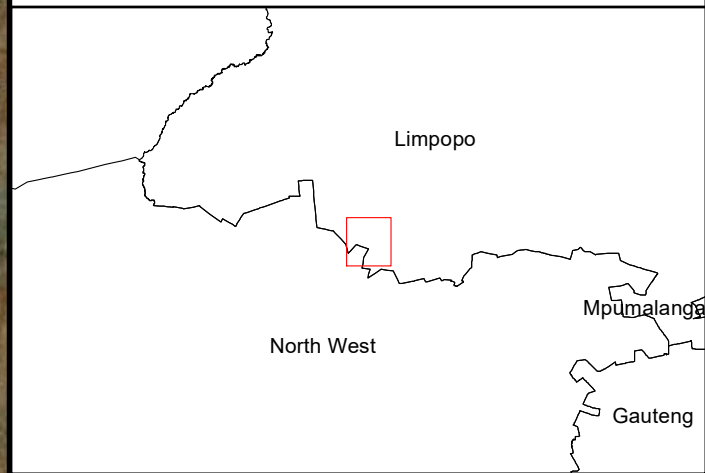


# SBPM PV Facility Limpopo Province

## Feasibility Area Map

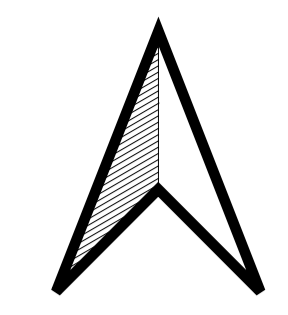
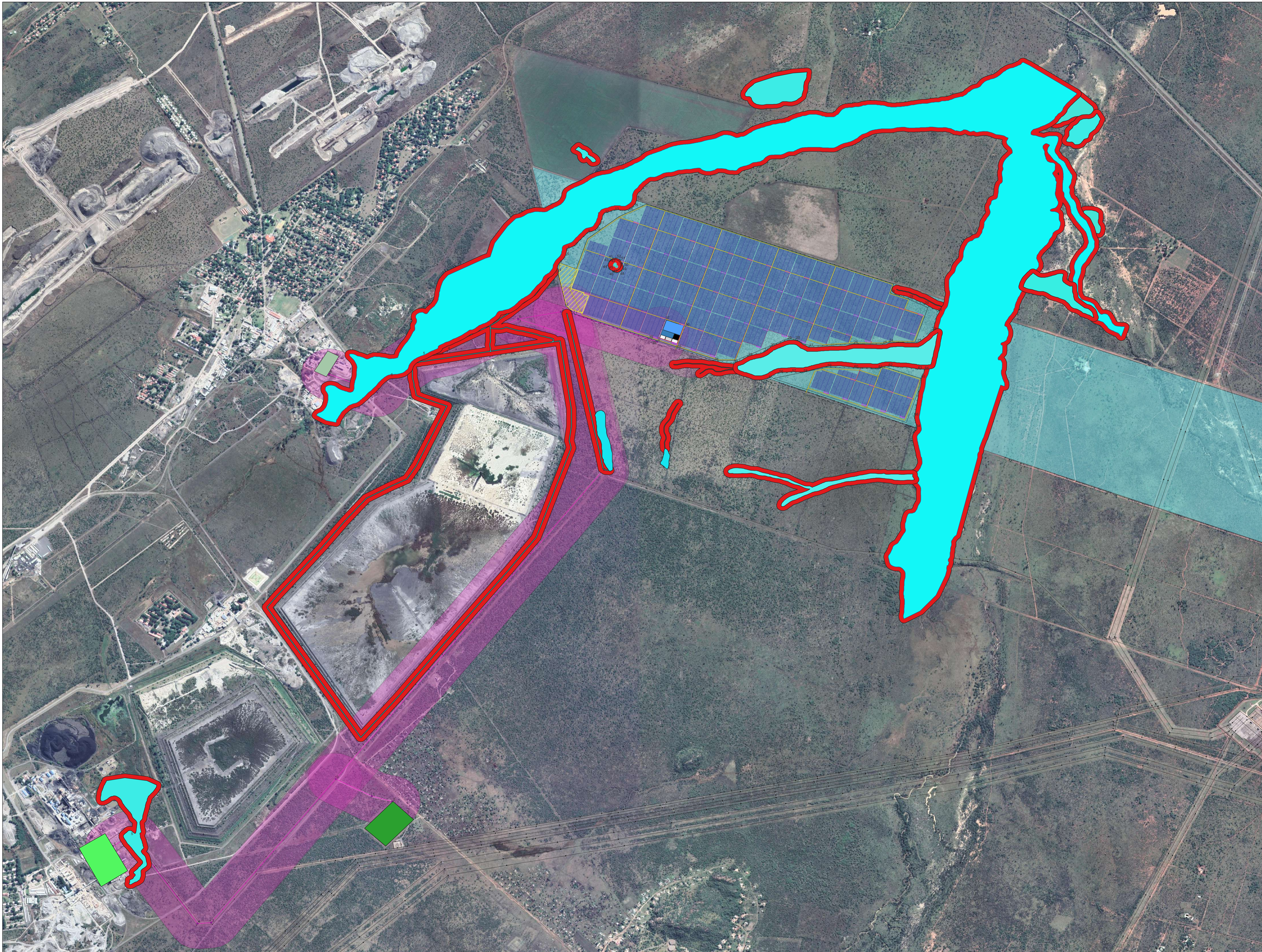
- Existing Substations
- Non-perennial river
- Perennial river
- Existing Powerlines
- Main Road
- Facility Substation and BESS Hub
- SBPM PV Feasibility Area
- Grid Connection Corridor (200m wide)
- Project Site
- Provincial Boundary

Scale: 1:30000  
 Projection: WGS\_84  
 Ref: SBPM Feasibility Area



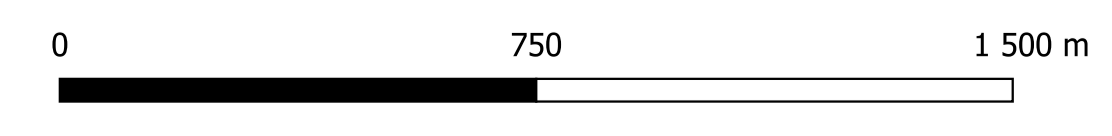
Source: Esri, Maxar, GeoEye, Earthstar Geographics, CNES/Airbus DS, USDA, USGS, AeroGRID, IGN, and the GIS User Community





**NOTES**  
 SYSTEM SIZE - 100 MW  
 BESS SIZE - 100 MW/ 200 MWh BATTERY  
 FLOOR-AREA RATIO - 2.85

- LEGEND**
- Wetland Sensitivities**
- HGM 6 - Hillslope Seep
  - HGM 6 +32m Buffer
  - HGM 5 - Unchannelled Valley Bottom
  - HGM 5 +32m Buffer
  - HGM 4 - Unchannelled Valley Bottom
  - HGM 4 +32m Buffer
  - HGM 3 - Unchannelled Valley Bottom
  - HGM 3 +32m Buffer
  - HGM 2 - Unchannelled Valley Bottom
  - HGM 2 +32m Buffer
  - HGM 1 - Unchannelled Valley Bottom
  - HGM 1 +32m Buffer
  - Drainage Features
  - Drainage Features + 32m Buffer
  - Dams
  - Dams + 32m Buffer
  - Artificial Wetland
  - Artificial Wetland + 32m Buffer
- Heritage Sensitivities**
- Grave - WP009 - UTM
  - Grave - WP009
  - Grave - WP008 - UTM
  - Grave - WP008
  - Grave - WP007 - UTM
  - Grave - WP007
  - Grave - WP009 + 50m Buffer (UTM)
  - Grave - WP008 + 50m Buffer (UTM)
  - Grave - WP007 + 50m Buffer (UTM)
  - SBPM Coordinates
  - SBPM Project Area Perimeter
  - Security Fencing
  - Solar PV Arrays
  - Central Inverters
  - Internal Cabling
  - Solar PV Substation
  - BESS
  - Control and Operations
  - Maintenance and Storage
  - Site office
  - Security Office
  - Laydown (Construction+Permanent)
  - Internal Road (4m Buffer)
  - Internal Road - UTM
  - Internal Road
  - Mortimer Substation
  - Fridge Substation
  - Powerline + 200m Buffer
  - SBPM powerline coordinates
  - Powerline Route
  - Powerline Buffer
  - Ivan Substation
  - Powerline Buffer
  - Swartklip powerline route
  - Swartklip powerline nodes
- Farm Properties**
- Farm Grootkuil 409 portion 4
- Google satellite





# SBPM & SCSC PV Facilities Limpopo and North West Provinces

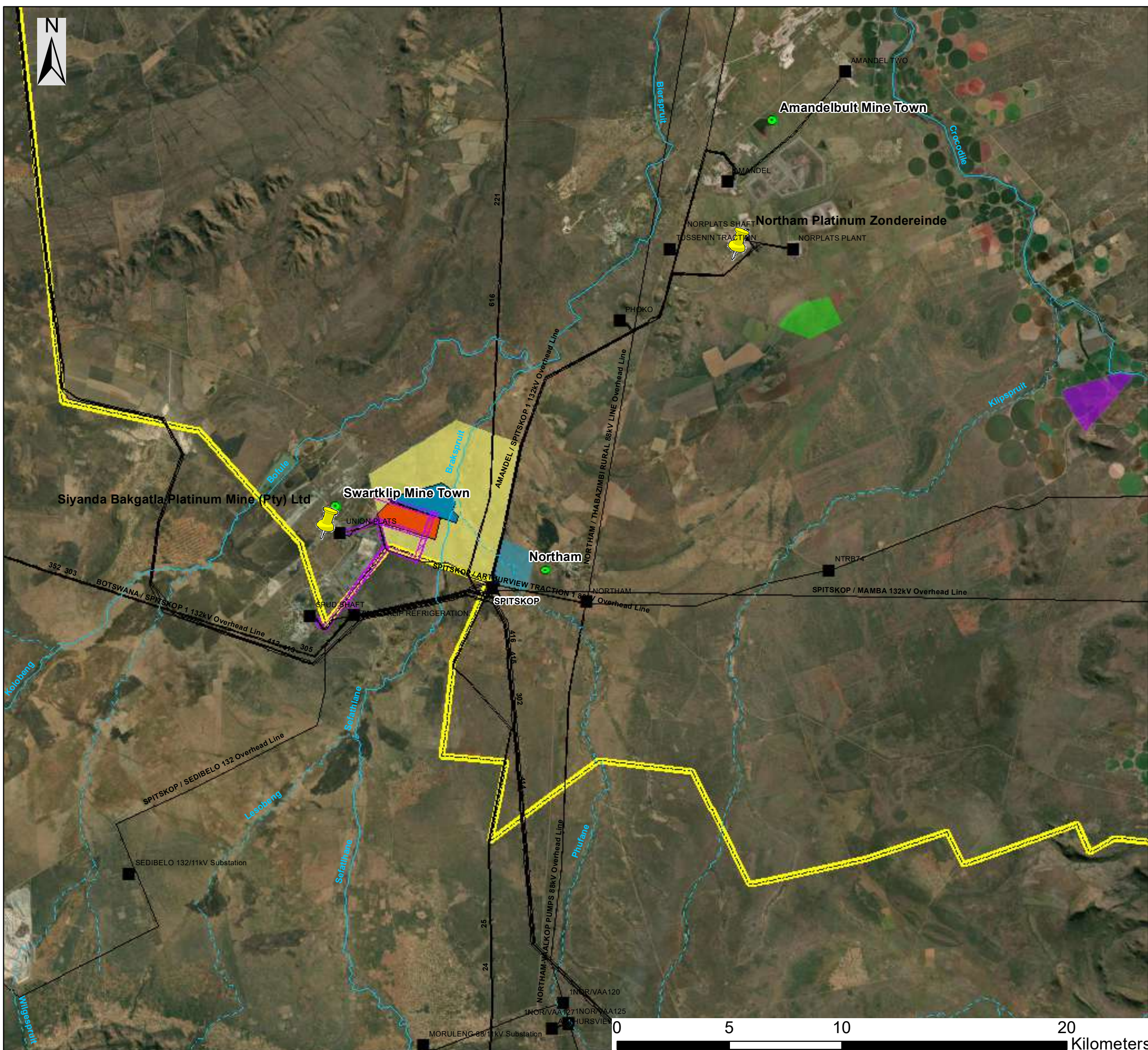
Combined Cumulative Map

## Legend

- Town
- Mine
- Existing Substations
- Non-perennial river
- Perennial river
- Existing Powerlines
- SBPM PV Facility
- SCSC PV Facility
- Grid Connection Corridor (200m wide)
- Provincial Boundary

## Other Known Renewable Energy Facilities

- Platinum Solar Park (75MW)
- Liverpool Solar Energy Plant (10MW)
- Spitskop Solar Park (75MW)
- Northam Solar PV (10MW)



Scale: 1:162 000  
 Projection: GCS\_WGS\_1984  
 Ref: SBPM & SCSC Combined Cumulative Map

