

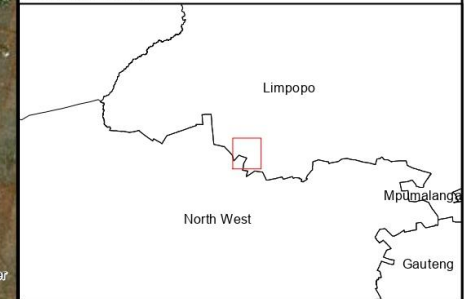
SCSC PV Facility Limpopo Province

Feasibility Area Map

- Existing Substations
- - - Non-perennial river
- Perennial river
- Existing Powerlines
- Main Road
- Project Site
- Provincial Boundary
- Facility Substation and BESS Hub
- SCSC PV Feasibility Area
- Grid Connection Corridor (200m wide)

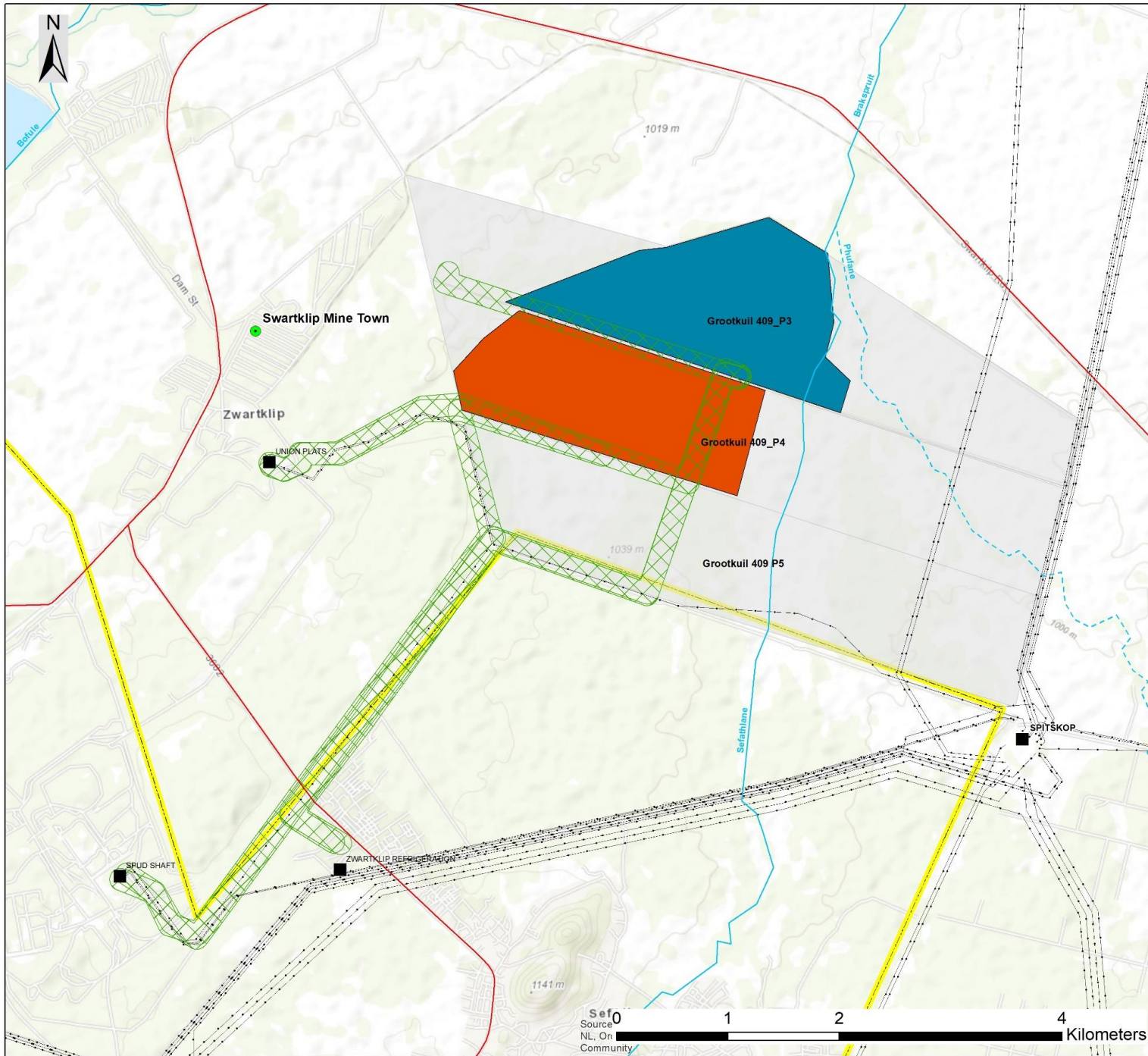
Scale: 1:30000
 Projection: WGS 84
 Ref: SBPM Feasibility Area

savannah
 environmental



0 1 2 4 Kilometers

Source: Esri, Maxar, GeoEye, Earthstar Geographics, CNES/Airbus DS, USDA, USGS, AeroGRID, IGN, and the GIS User Community



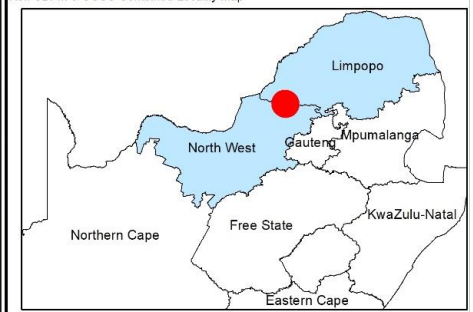
SBPM & SCSC PV Facilities Limpopo and North West Provinces

Combined Locality Map

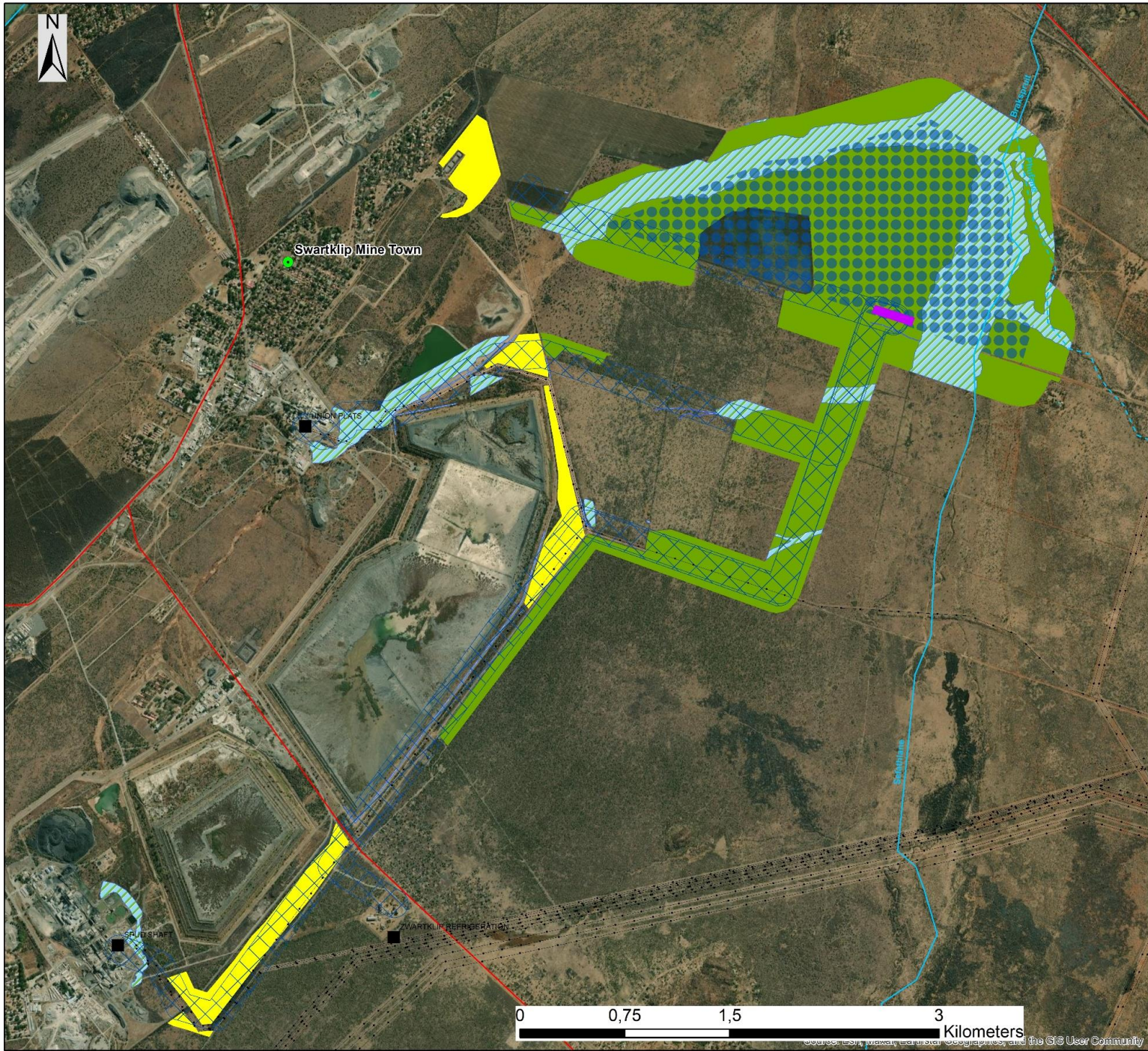
- Town
- Existing Substations
- - - Non-perennial river
- Perennial river
- · - · - Existing Powerlines
- Main Road
- Project Site
- SBPM PV Facility
- SCSC PV Facility
- Grid Connection Corridor (200m wide)
- Provincial Boundary

Scale: 1:30000
 Projection: GCS_WGS_1984
 Ref: SBPM & SCSC Combined Locality Map

savannah
 environmental



Source:
 NL, Or
 Community



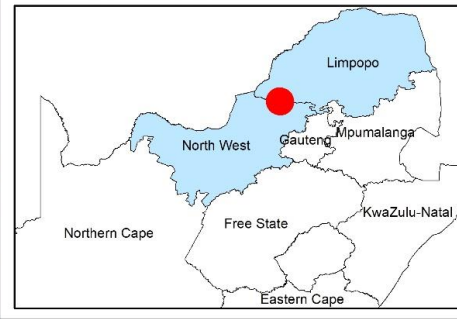
SCSC PV Facility Limpopo and North West Provinces Preliminary Sensitivity Map

- Town
- Existing Substations
- Non-perennial river
- Perennial river
- Existing Powerlines
- Main Road
- SCSC PV Facility
- Grid Connection Corridor (200m wide)
- Facility Substation and BESS Hub

Environmental Sensitivities

- Wetlands (High Sensitivity)
- Degraded Bushveld (High Ecological & Avifauna Sensitivity)
- Fragmented Bushveld (Medium Sensitivity)

Scale: 1:30000
Projection: GCS_WGS_1984
Ref: SCSC Preliminary Sensitivity Map



Sources: ESRI, Pixabay, Earthstar, Geography, and the GIS User Community

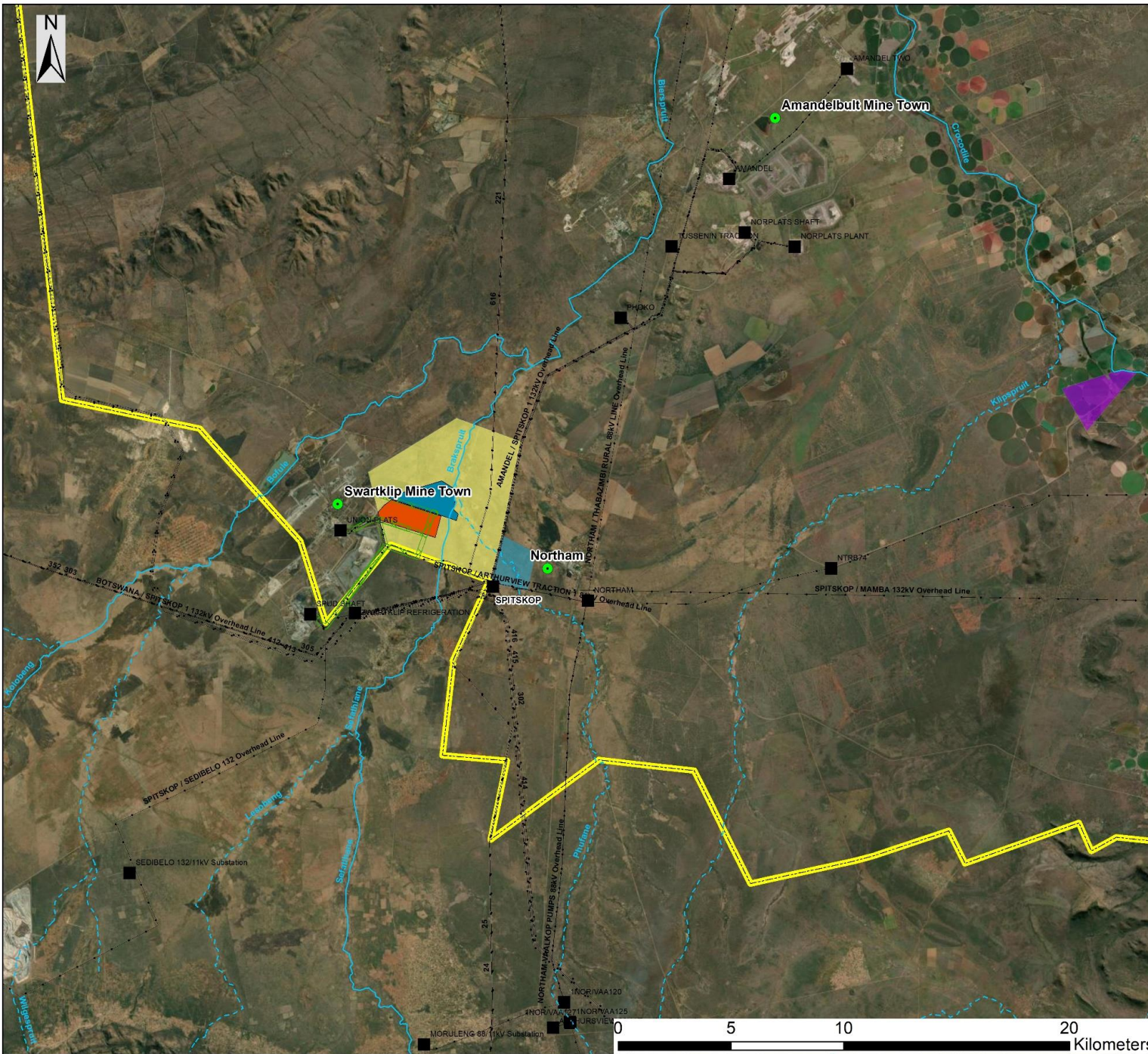
SBPM & SCSC PV Facilities Limpopo and North West Provinces

Cumulative Map

- Town
- Existing Substations
- Non-perennial river
- Perennial river
- Existing Powerlines
- SBPM PV Facility
- SCSC PV Facility
- Grid Connection Corridor (200m wide)
- Provincial Boundary

Other Known Renewable Energy Facilities

- Platinum Solar Park (75MW)
- Liverpool Solar Energy Plant (10MW)
- Spitskop Solar Park (75MW)



Scale: 1:30000
 Projection: GCS_WGS_1984
 Ref: SBPM & SCSC Combined Cumulative Map

