

Highveld Solar PV Facility North West Province

Locality Map

Legend

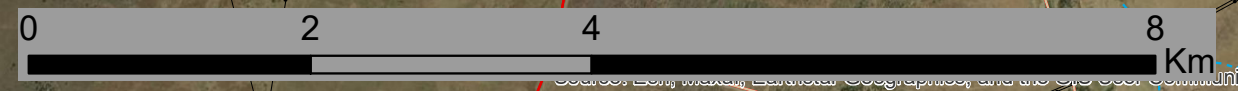
- Town
- Eskom Substation
- Existing Power Line
- National Route
- Main Road
- Secondary Road
- Local Road
- Perennial River
- Non-perennial River
- Proposed Development**
- Affected Properties
- Development Area

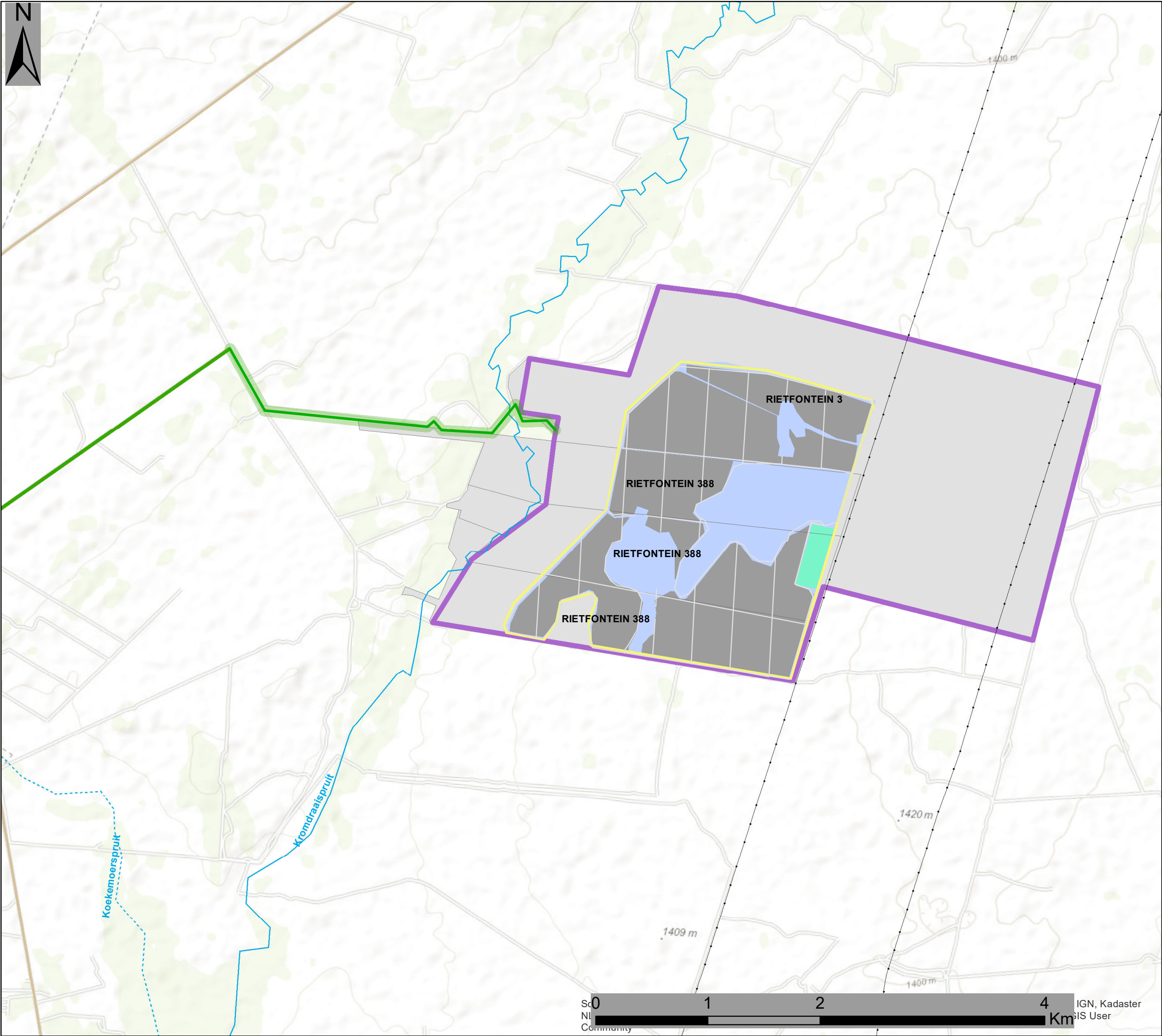


Scale: 1:60 000
 Projection: GCS_WGS_1984
 Map Ref: Highveld Solar PV Locality Map



Stilfontein





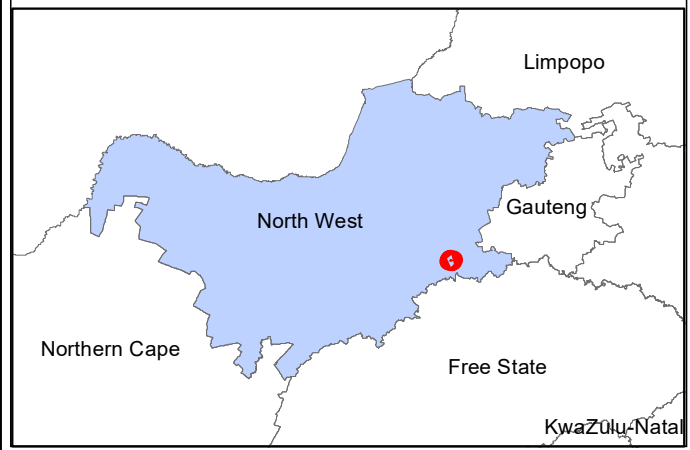
Highveld Solar PV Facility North West Province

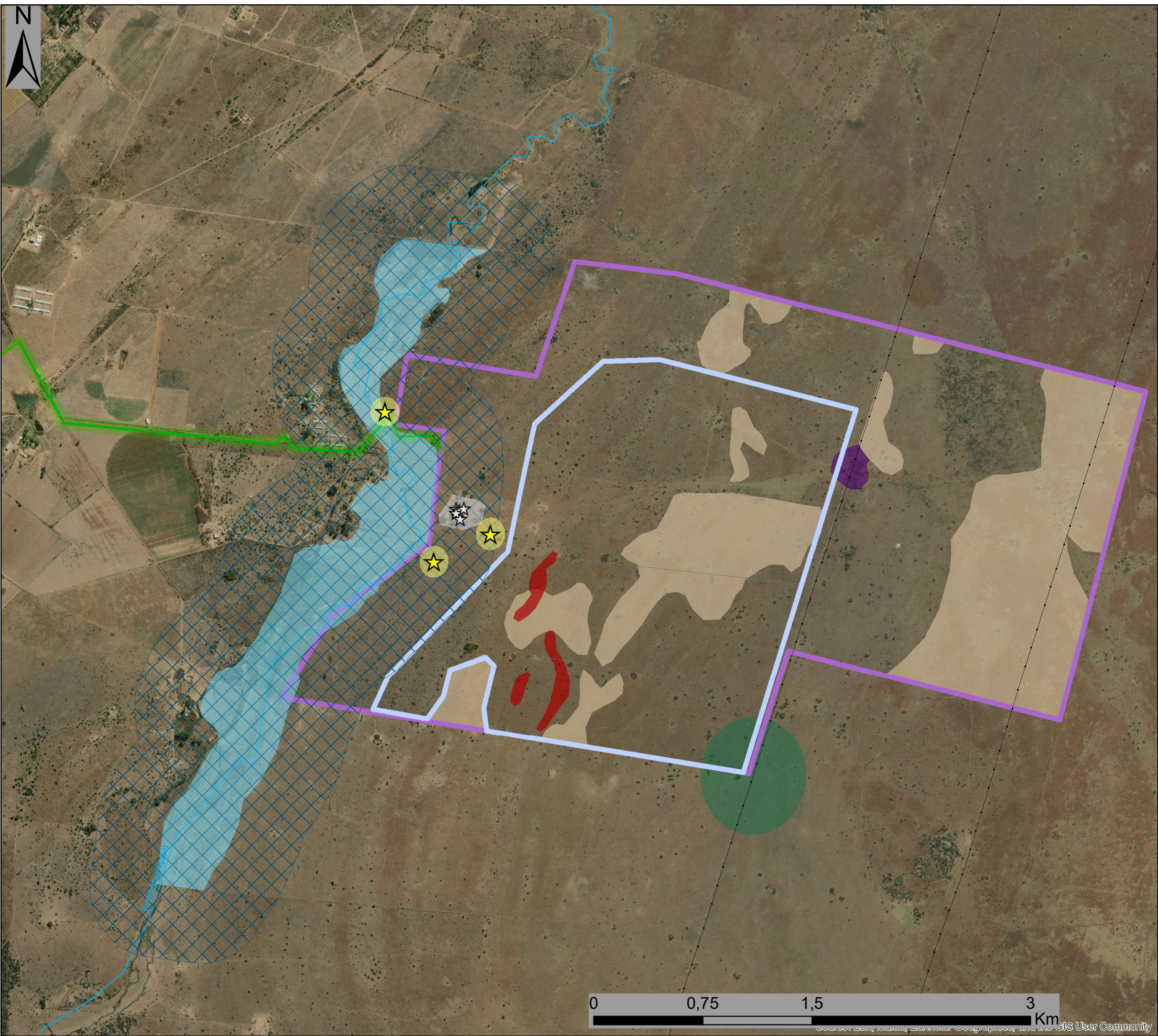
Layout Map

Legend

- Existing Power Line
- Secondary Road
- Local Road
- Perennial River
- Non-perennial River
- Proposed Development**
- Affected Properties
- Development Area
- Development Footprint
- PV Arrays
- Substation, BESS & Laydown Hub
- Access Road Upgrade
- Facility Fence
- Internal Roads

Scale: 1:30 000
 Projection: GCS_WGS_1984
 Map Ref: Highveld Solar PV Layout Map





Highveld Solar PV Facility North West Province

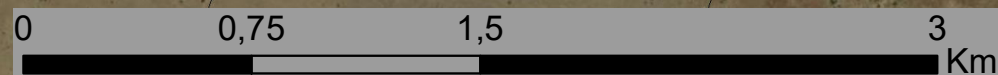
Sensitivity Map

Legend

- Existing Power Line
- Local Road
- Perennial River
- - - Non-perennial River
- Proposed Development**
- Development Area
- Development Footprint
- Access Road Upgrade
- Environmental Sensitivities**
- Ecological Sensitivities**
- Red Listed Plants (Very High Ecological Sensitivity)
- Watercourse (High Ecological Sensitivity)
- Watercourse Regulated 500m Buffer (High Ecological Sensitivity)
- Avifauna Sensitivities**
- Floodplain & Avian Flyway (High Avifaunal Sensitivity)
- Floodplain & Avian Flyway 500m Buffer (High Avifaunal Sensitivity)
- Artificial Livestock Watering Hole (High Avifaunal Sensitivity)
- Optimal Foraging Habitat (High Avifaunal Sensitivity)
- Lanner Falcon 400m Buffer (High Avifaunal Sensitivity)
- Heritage Sensitivities**
- Grave Sites (High Heritage Sensitivity)
- Grave Sites 100m Buffer (No-Go Area)
- Archaeological Structures (Low Heritage Sensitivity)
- Archaeological Structures 100m Buffer

savannah
environmental

Scale: 1:25 000
Projection: GCS_WGS_1984
Map Ref: Highveld Solar PV Layout Map





Highveld Solar PV Facility North West Province

Sensitivity and Layout Map

Legend

- Existing Power Line
- Local Road
- Perennial River
- Non-perennial River

Proposed Development

- Development Area
- Development Footprint
- PV Arrays
- Substation, BESS & Laydown Hub
- Access Road Upgrade
- Internal Roads

Environmental Sensitivities

Ecological Sensitivities

- Red Listed Plants (Very High Ecological Sensitivity)
- Watercourse (High Ecological Sensitivity)
- Watercourse Regulated 500m Buffer (High Ecological Sensitivity)

Avifauna Sensitivities

- Floodplain & Avian Flyway (High Avifaunal Sensitivity)
- Floodplain & Avian Flyway 500m Buffer (High Avifaunal Sensitivity)
- Artificial Livestock Watering Hole (High Avifaunal Sensitivity)
- Optimal Foraging Habitat (High Avifaunal Sensitivity)
- Lanner Falcon 400m Buffer (High Avifaunal Sensitivity)

Heritage Sensitivities

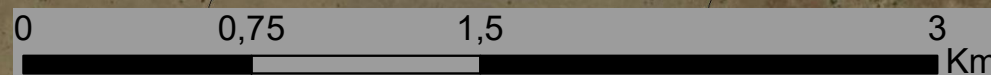
- Grave Sites (High Heritage Sensitivity)
- Grave Sites 100m Buffer (No-Go Area)
- Archaeological Structures (Low Heritage Sensitivity)
- Archaeological Structures 100m Buffer

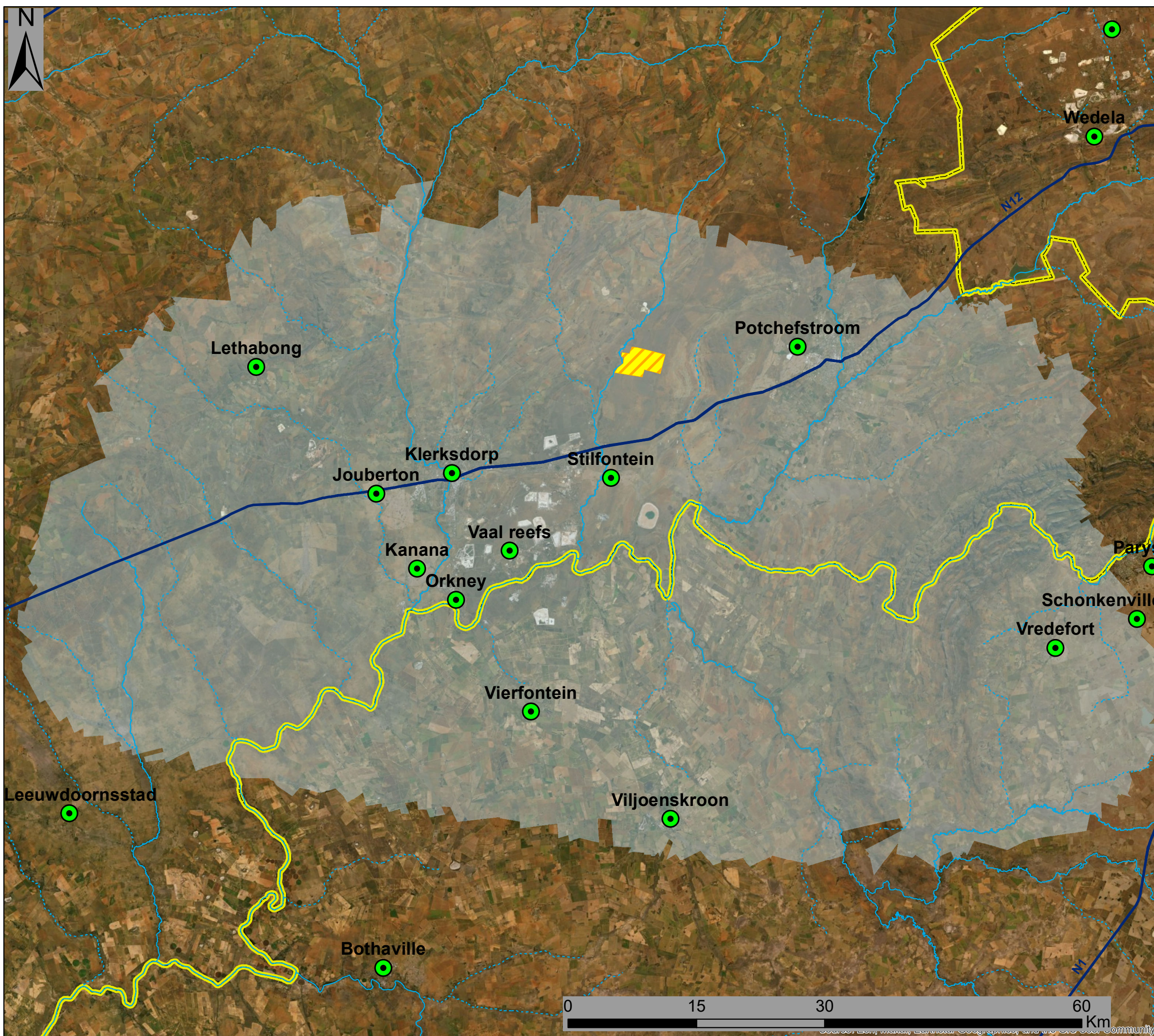


Scale: 1:25 000

Projection: GCS_WGS_1984

Map Ref: Highveld Solar PV Layout Map












Highveld Solar PV Facility North West Province

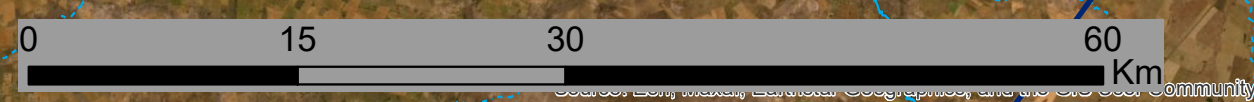
REDZ Map

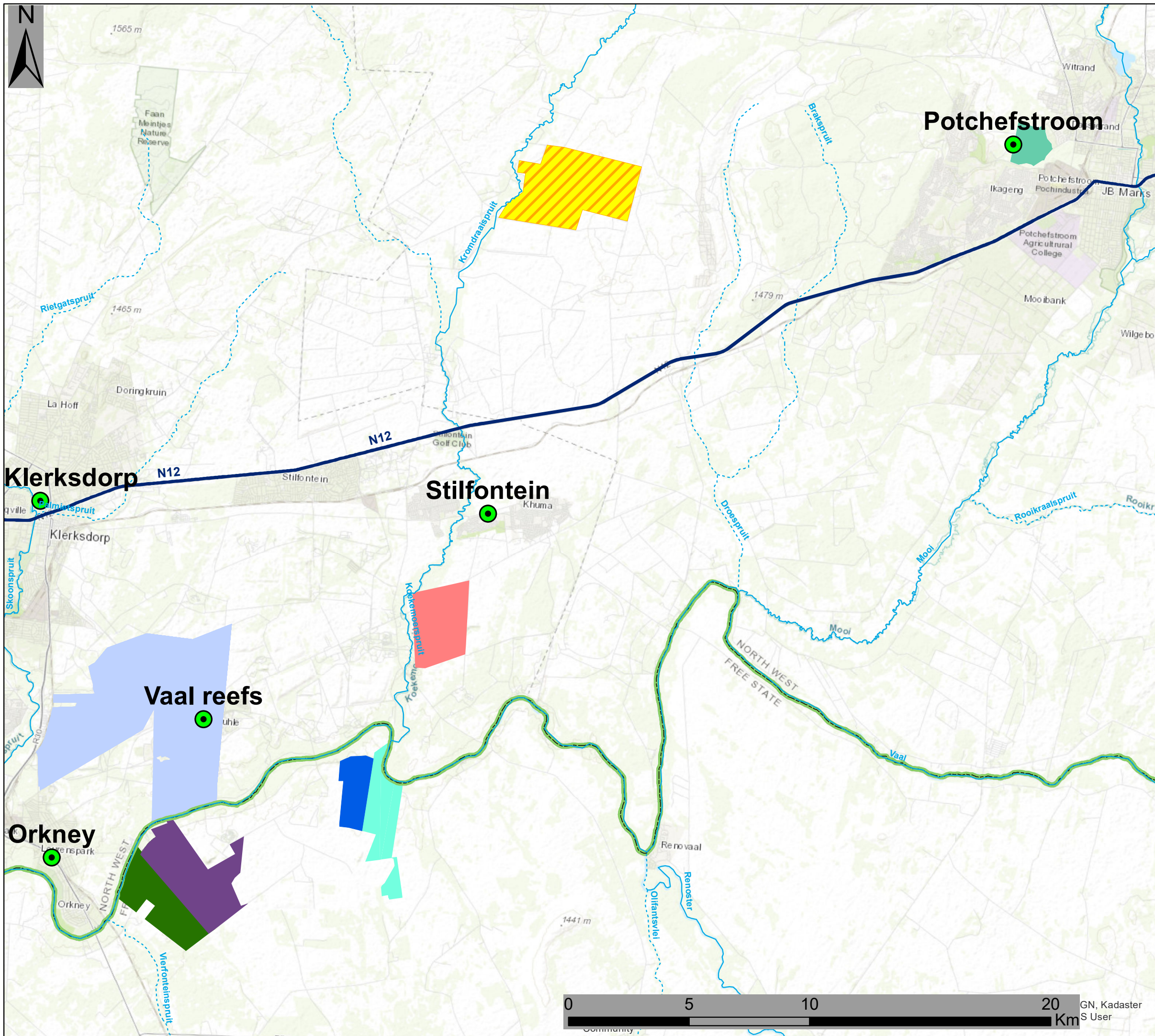
Legend

-  Town
-  National Route
-  Perennial River
-  Non-perennial River
-  Provincial Boundary
-  REDZ10 (Klerksdorp)
- Proposed Development**
-  PV Development Area



Scale: 1:400 000
 Projection: GCS_WGS_1984
 Map Ref: Highveld Solar PV REDZ Map












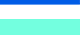





Highveld Solar PV Facility North West Province

Cumulative Map

Legend

-  Town
-  National Route
-  Perennial River
-  Non-perennial River
-  Provincial Boundary
- Proposed Development**
-  PV Development Area
- Properties Linked To Authorised Renewable Energy Facilities (REEA 2022 Q2)**
-  Buffels Solar PV1 Facility
-  Paleso Solar PV Facility
-  VRS 1, 2, 3 Solar PV Facility
-  Farm Town And Townlands 435 Solar PV Facility
-  Siyanda Solar PV Facility
-  Thakadu Solar PV Facility
-  Nyarhi Solar PV Facility

Scale: 1:150 000
 Projection: GCS_WGS_1984
 Map Ref: Highveld Solar PV Cumulative Map

