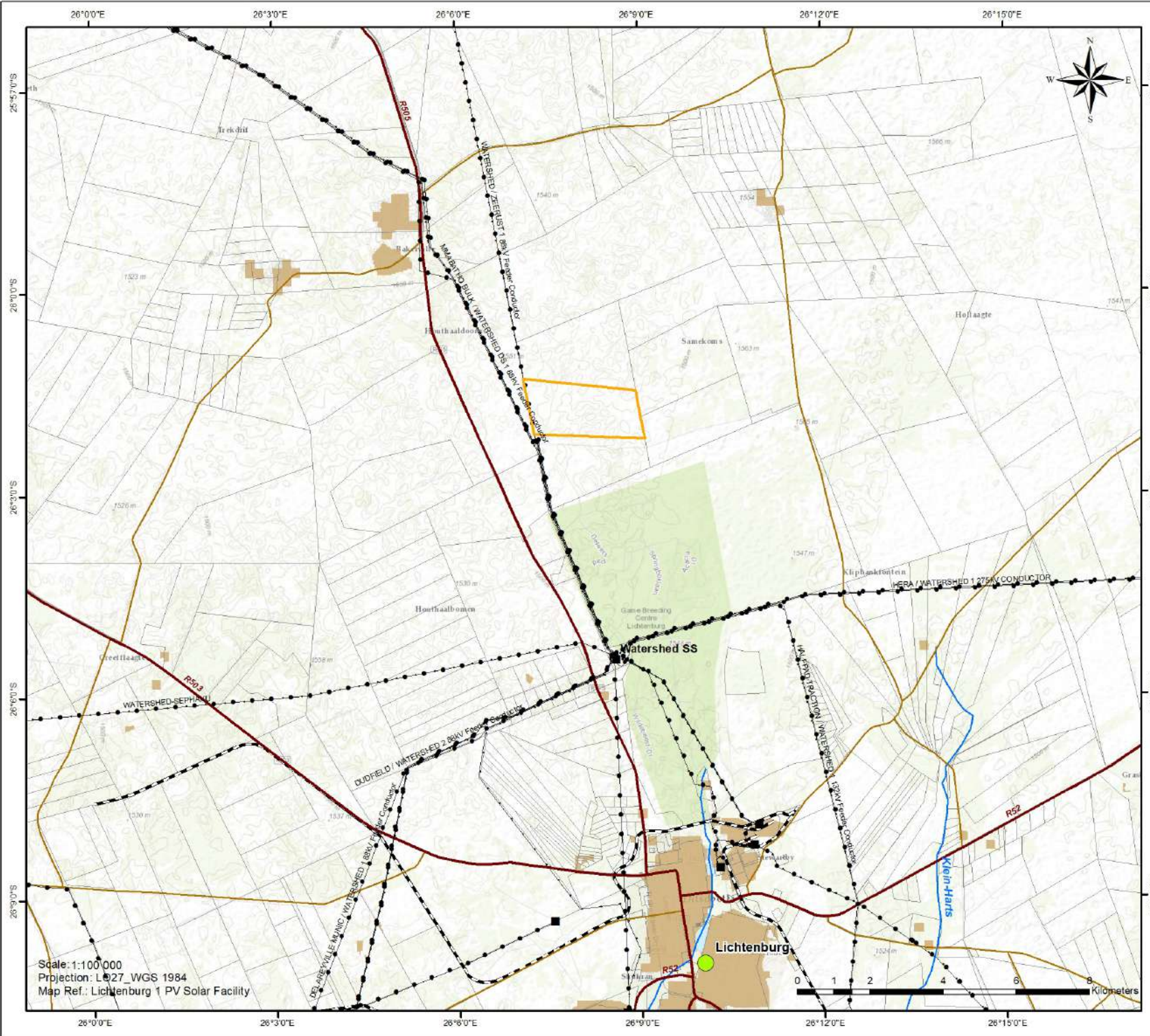


# Lichtenburg 1 PV Locality Map

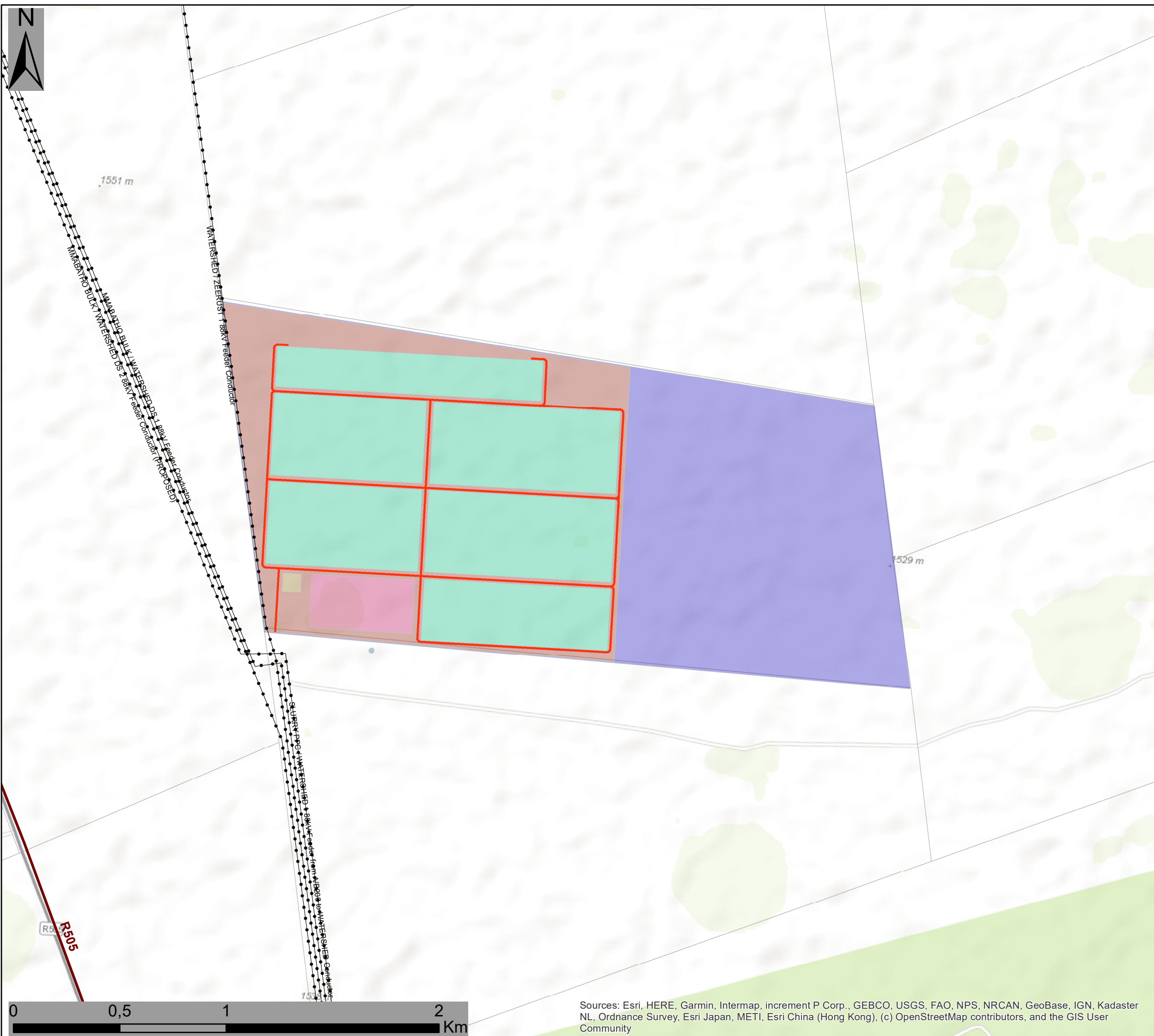


- ### Legend
- Lichtenburg 1
  - Town
  - Distribution Substation
  - Existing power line
  - National Route
  - Regional Road
  - Main Road
  - Railway Line
  - River
  - Cadastral Boundary
  - Urban / Built-up Area

Scale: 1:100 000  
 Projection: L027\_WGS 1984  
 Map Ref.: Lichtenburg 1 PV Solar Facility







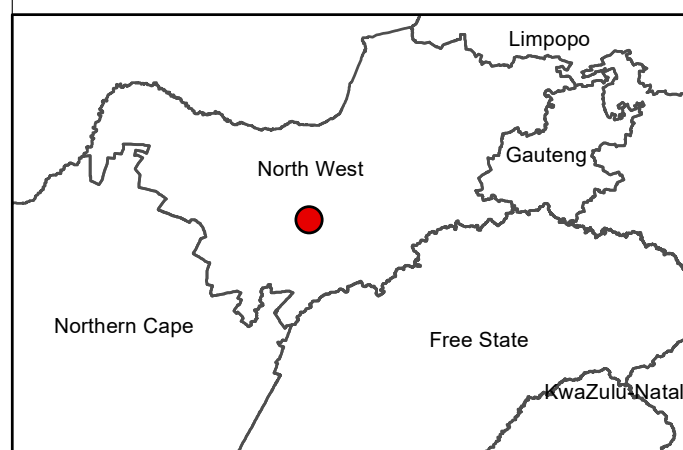
# EMPR and layout update for Lichtenburg PV 1

## Layout Map

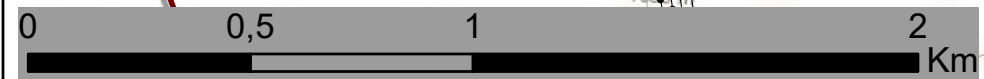
### Legend

- Eskom Substation
  - Existing Power Lines
  - Regional Road
  - Internal roads
  - Farm Portions
- ### Infrastructure Layout
- Allocated Area
  - Construction Power Supply
  - Fence
  - Laydown Area
  - PV Area
  - Site Offices
  - Substation

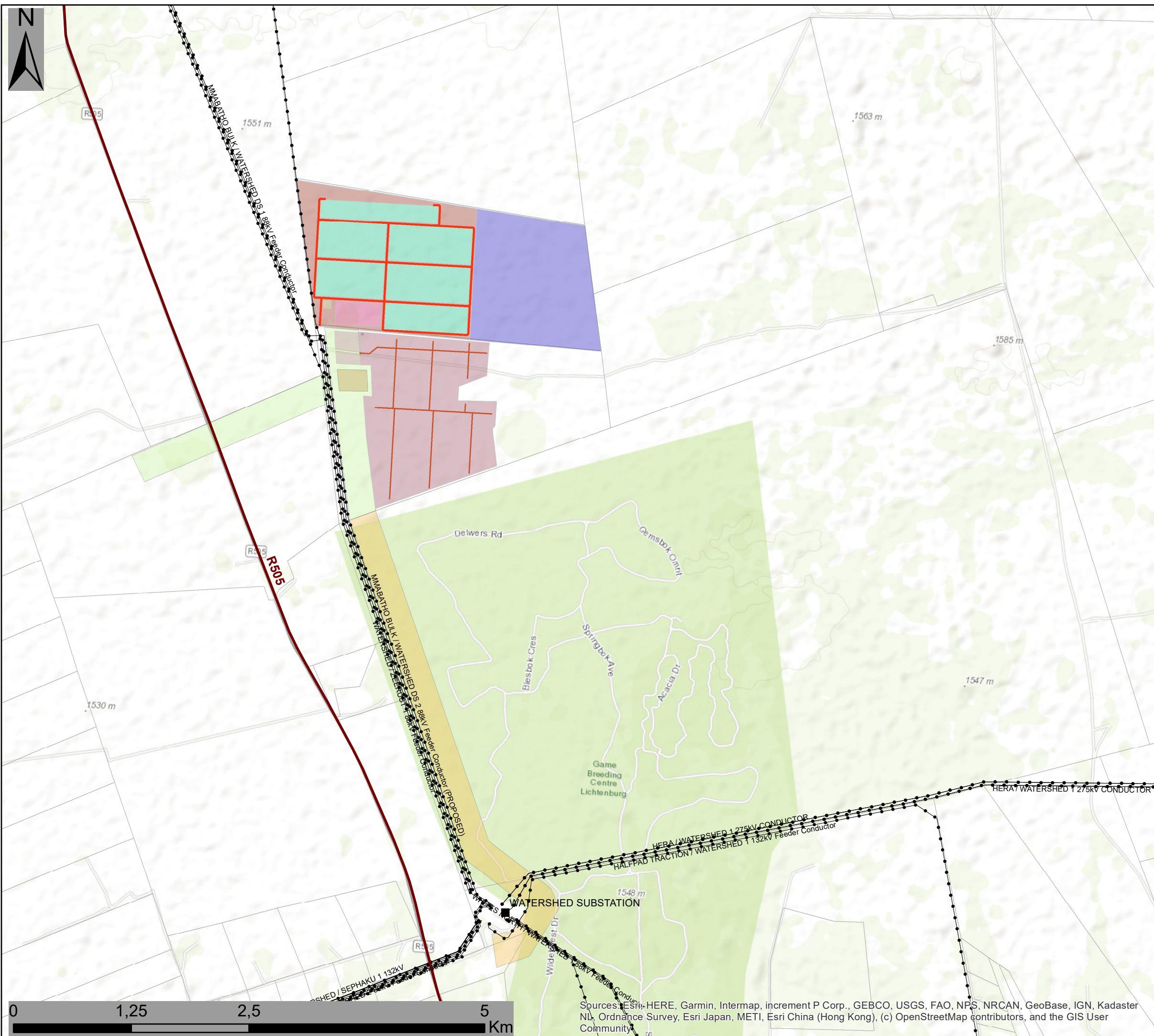
Scale: 1:30 000  
 Projection: LO19  
 Map Ref: L1 EMPr Layout



Sources: Esri, HERE, Garmin, Intermap, increment P Corp., GEBCO, USGS, FAO, NPS, NRCAN, GeoBase, IGN, Kadaster NL, Ordnance Survey, Esri Japan, METI, Esri China (Hong Kong), (c) OpenStreetMap contributors, and the GIS User Community







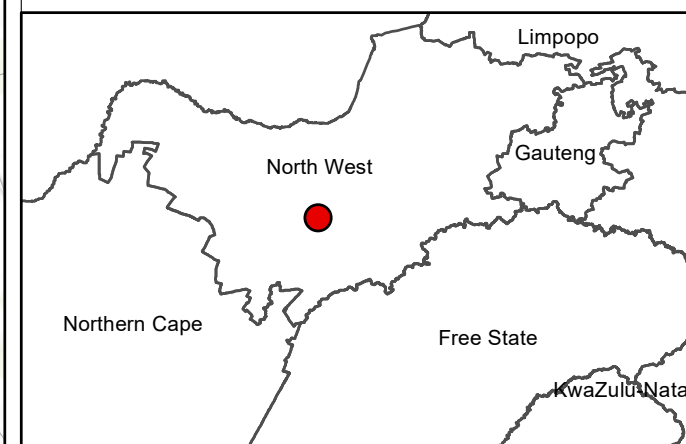
# EMPR and layout update for Lichtenburg PV 1 & 3

## Layout Map

### Legend

- Eskom Substation
- Existing Power Lines
- Regional Road
- Internal roads
- Farm Portions
- Infrastructure Layout 1**
- Allocated Area
- Construction Power Supply
- Fence
- Laydown Area
- PV Area
- Site Offices
- Substation
- Infrastructure Layout 3**
- Allocated Area
- Construction Power Supply
- Fence
- Footprint
- L3 OHL corridor 2
- Laydown Area
- O&M Building/Site Offices
- Optional Laydown Area
- Reticulation Corridor
- Substation
- Farm Portions

Scale: 1:30 000  
 Projection: LO19  
 Map Ref: L1 + L3 EMPr Layout



Sources: Esri, HERE, Garmin, Intermap, increment P Corp., GEBCO, USGS, FAO, NPS, NRCAN, GeoBase, IGN, Kadaster NL, Ordnance Survey, Esri Japan, METI, Esri China (Hong Kong), (c) OpenStreetMap contributors, and the GIS User Community





# Lichtenburg 1 PV Facility & Associated Infrastructure EMPR & Layout Amendment Sensitivity & Layout Map

## Legend

- Eskom Substation
- Existing Power Lines
- Regional Road
- Lichtenburg 1 Development Area (authorised)
- Collector Substation Complex (Proposed)
- Facility Substation (authorised)

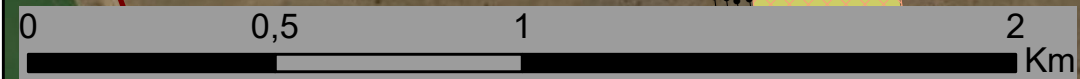
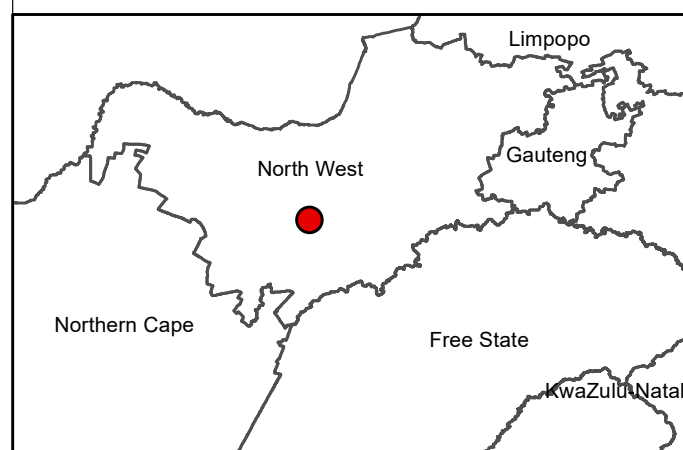
## Layout Amendments

- Power line corridor - Alternative 2

## Environmental Sensitivity

- ▨ Medium Avifauna Sensitivity
- Moderate high Avifauna Sensitivity
- Elionurus muticus Savanna Grassland (Medium Ecological Sensitivity)
- Palaeo-Drainage Grassland (Medium Ecological Sensitivity)

Scale: 1:30 000  
Projection: LO19  
Map Ref: L1 Amendment Layout



Source: Esri, Maxar, GeoEye, Earthstar Geographics, CNES/Airbus DS, USDA, USGS, AeroGRID, IGN, and the GIS User Community