








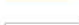

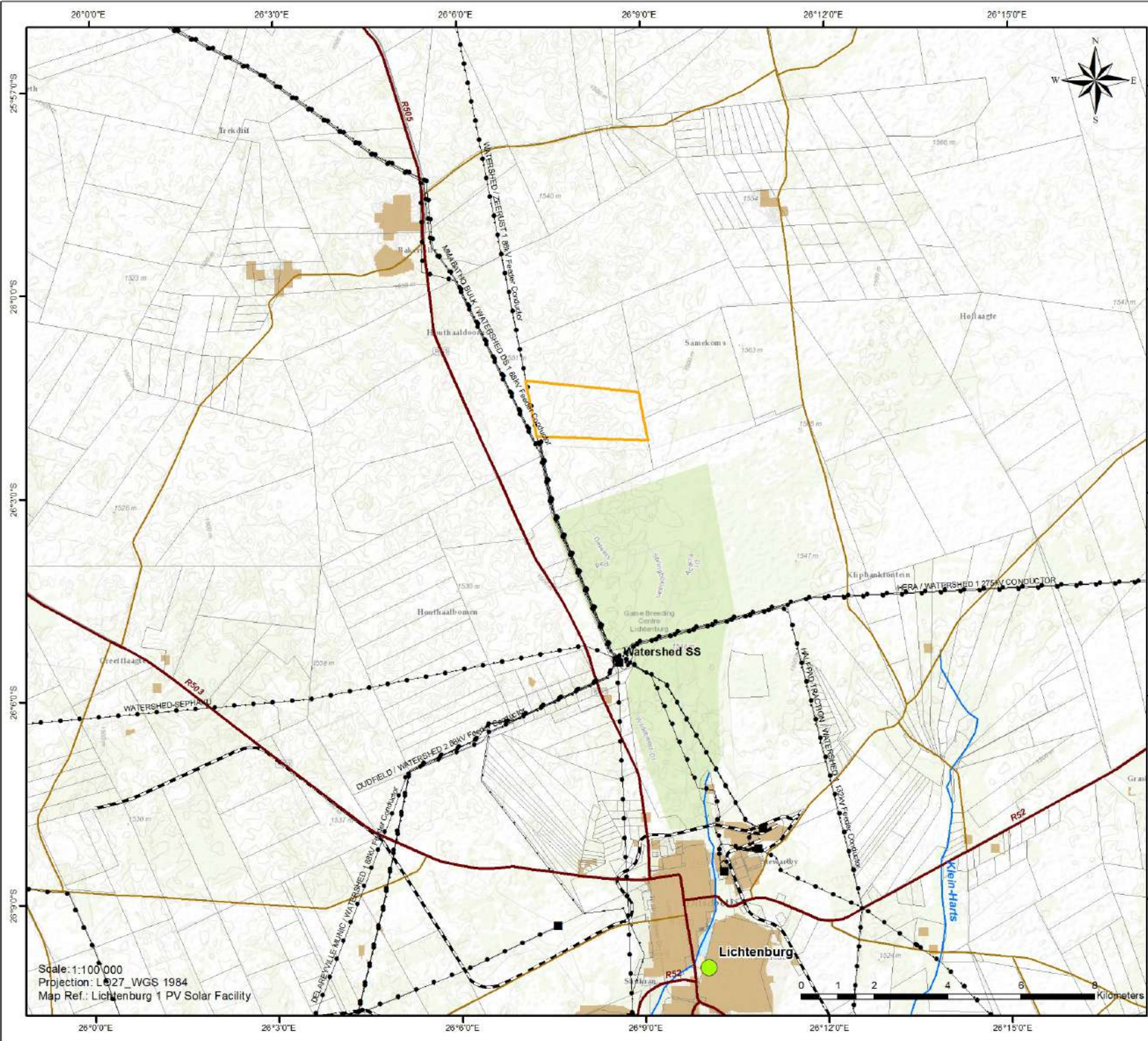


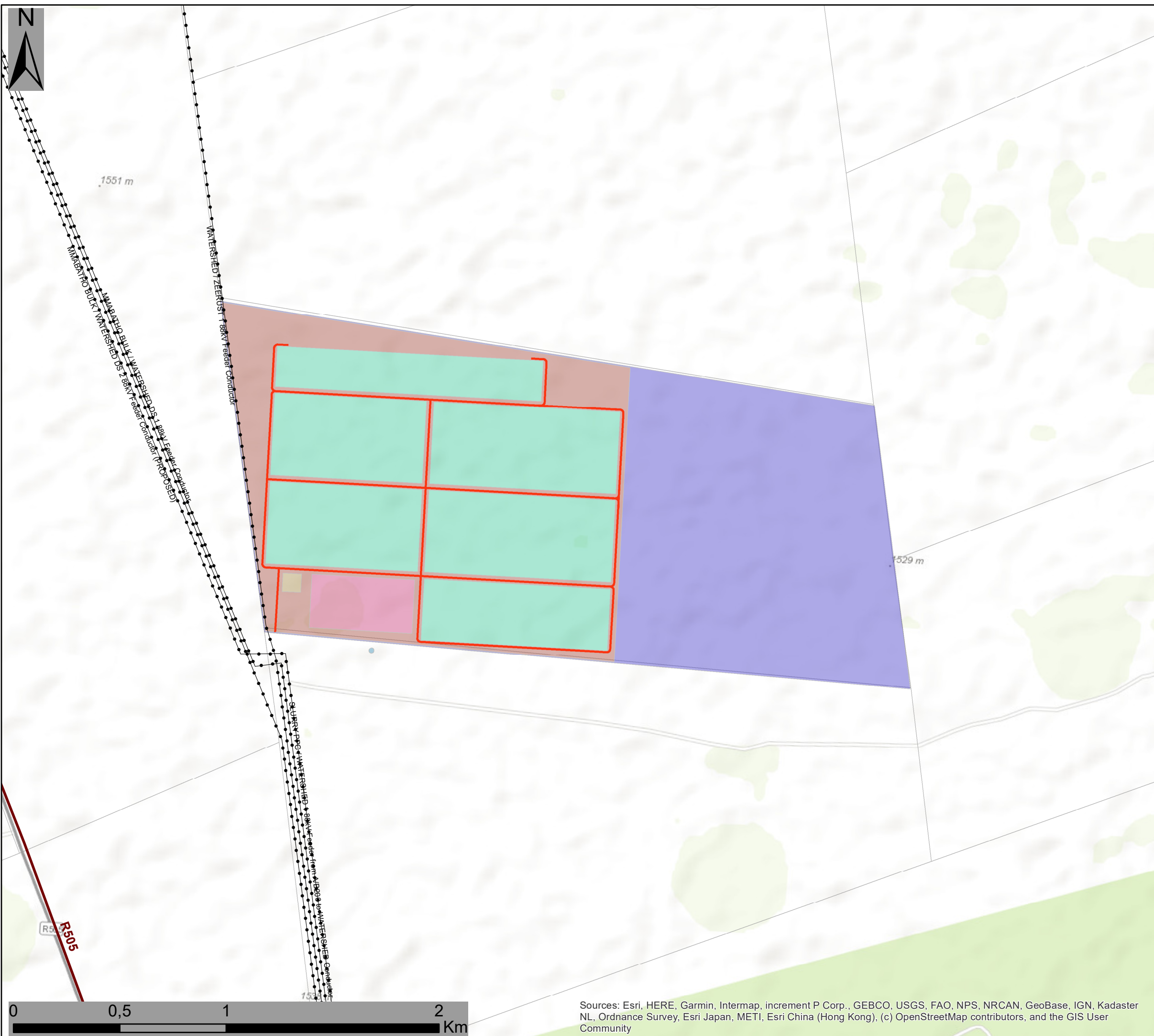
Lichtenburg 1 PV Locality Map

- ### Legend
-  Lichtenburg 1
 -  Town
 -  Distribution Substation
 -  Existing power line
 -  National Route
 -  Regional Road
 -  Main Road
 -  Railway Line
 -  River
 -  Cadastral Boundary
 -  Urban / Built-up Area



Scale: 1:100 000
 Projection: L027_WGS 1984
 Map Ref.: Lichtenburg 1 PV Solar Facility





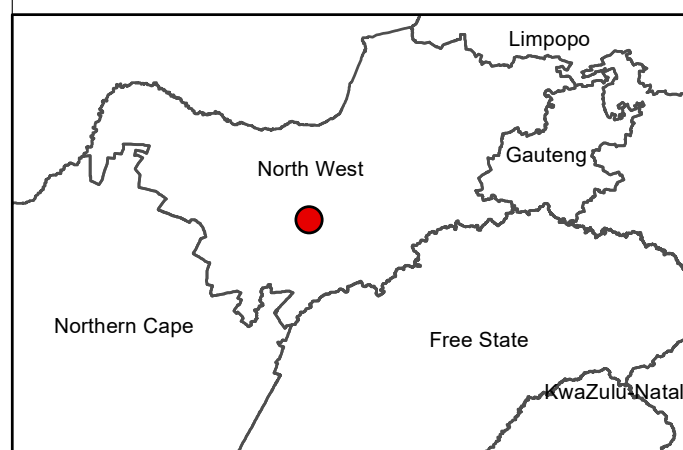
EMPR and layout update for Lichtenburg PV 1

Layout Map

Legend

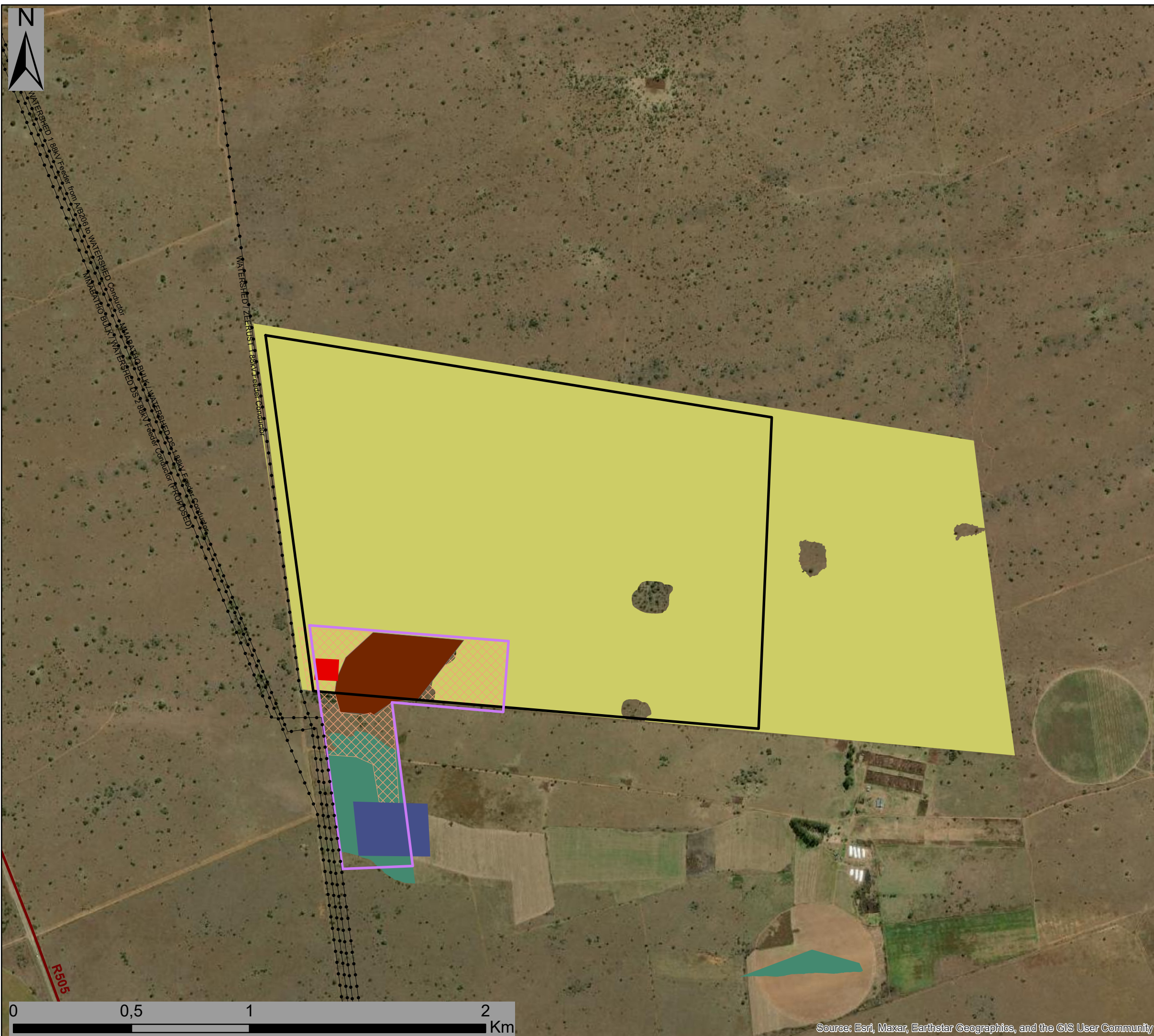
- Eskom Substation
 - Existing Power Lines
 - Regional Road
 - Internal roads
 - Farm Portions
- ### Infrastructure Layout
- Allocated Area
 - Construction Power Supply
 - Fence
 - Laydown Area
 - PV Area
 - Site Offices
 - Substation

Scale: 1:30 000
 Projection: LO19
 Map Ref: L1 EMPr Layout



Sources: Esri, HERE, Garmin, Intermap, increment P Corp., GEBCO, USGS, FAO, NPS, NRCAN, GeoBase, IGN, Kadaster NL, Ordnance Survey, Esri Japan, METI, Esri China (Hong Kong), (c) OpenStreetMap contributors, and the GIS User Community





Lichtenburg 1 PV Facility & Associated Infrastructure EMPR & Layout Amendment Sensitivity & Layout Map

Legend

- Eskom Substation
- Existing Power Lines
- Regional Road
- Lichtenburg 2 Development Area (authorised)
- Collector Substation Complex (Proposed)
- Facility Substation (authorised)

Layout Amendments

- Power line corridor - Alternative 2

Environmental Sensitivity

- ▨ Medium Avifauna Sensitivity
- Moderate high Avifauna
- Elionurus muticus Savanna Grassland (Medium Ecological Sensitivity)
- Palaeo-Drainage Grassland (Medium Ecological Sensitivity)

Scale: 1:30 000
Projection: LO19
Map Ref: L1 Amendment Layout



Source: Esri, Maxar, Earthstar Geographics, and the GIS User Community