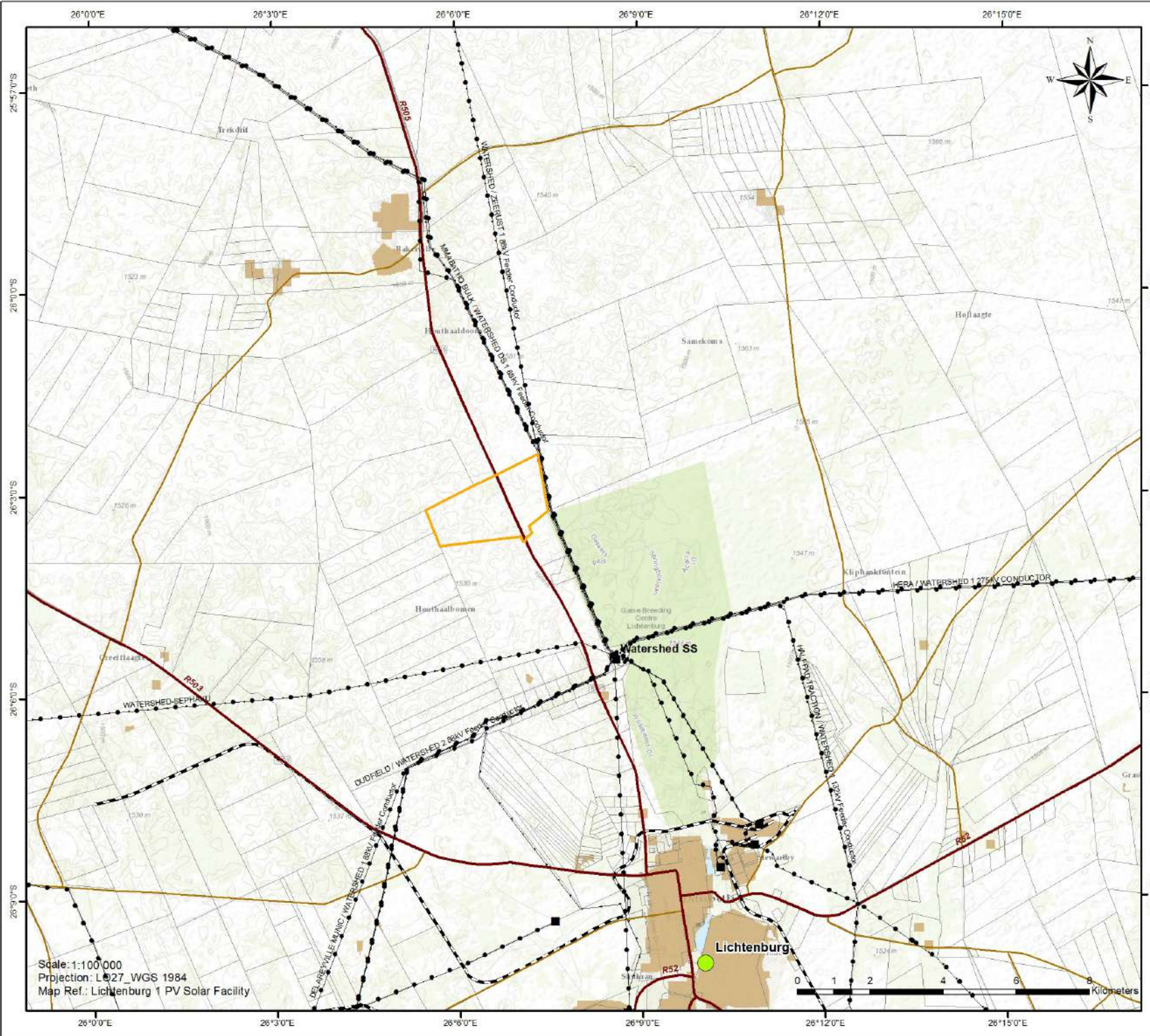


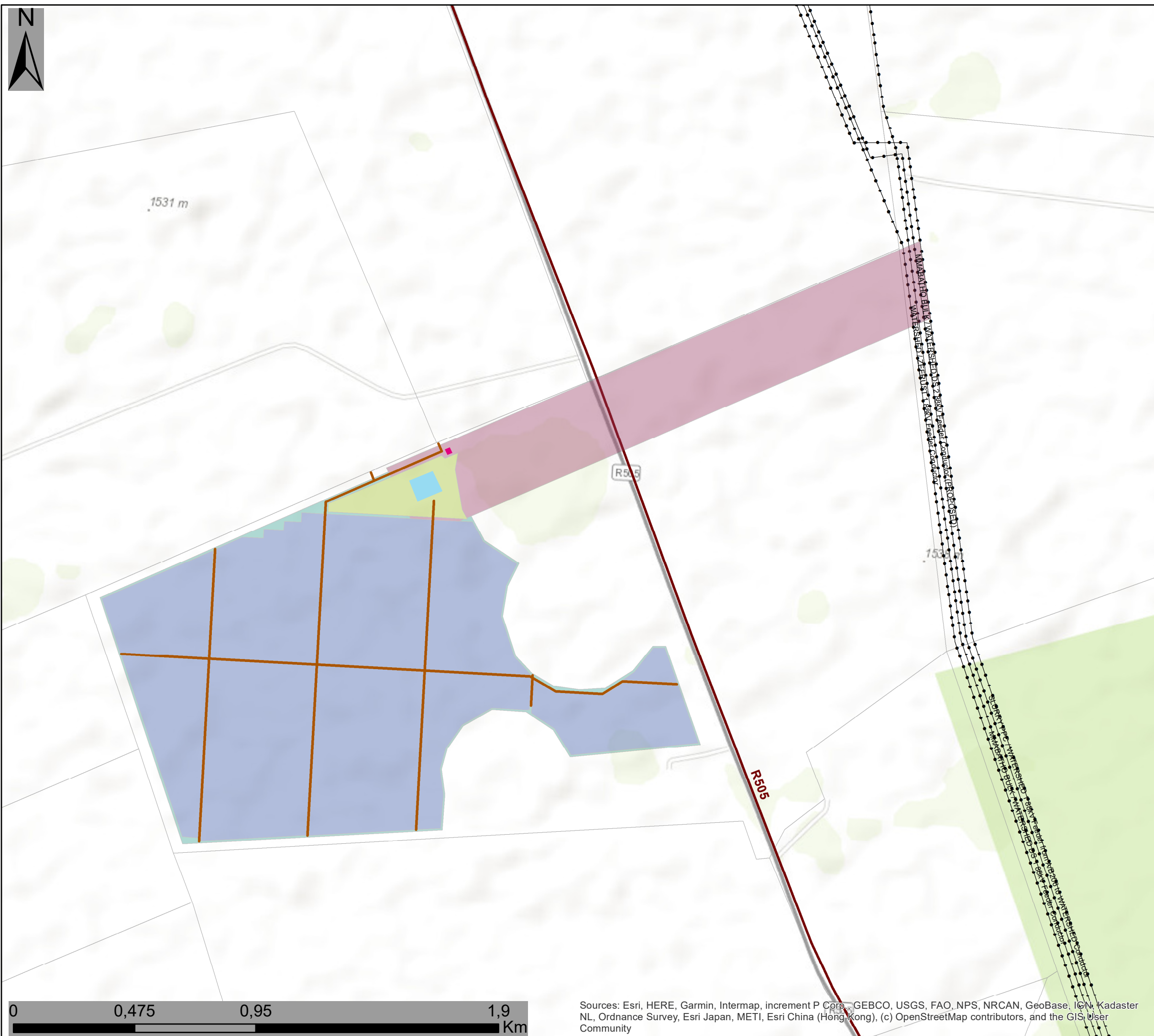
Lichtenburg 2 PV Locality Map



- ### Legend
- Lichtenburg 2
 - Town
 - Distribution substation
 - Existing power line
 - National route
 - Regional road
 - Main road
 - Railway Line
 - Farm Portions
 - Urban / Built-up Area

Scale: 1:100 000
 Projection: L027_WGS 1984
 Map Ref.: Lichtenburg 1 PV Solar Facility




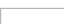
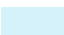





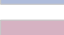




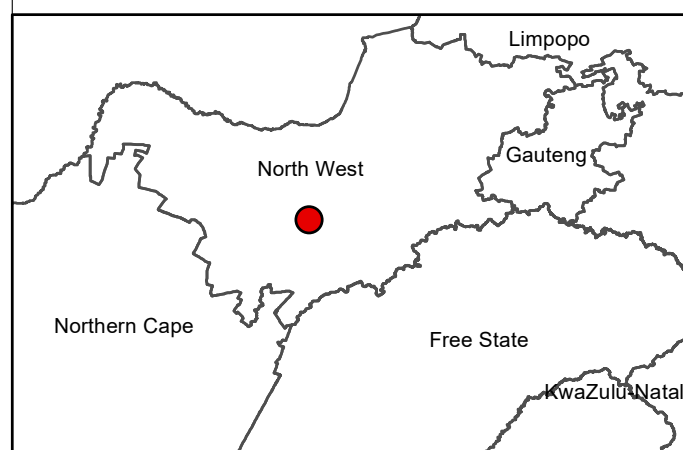
EMPR and layout update for Lichtenburg PV 2

Layout Map

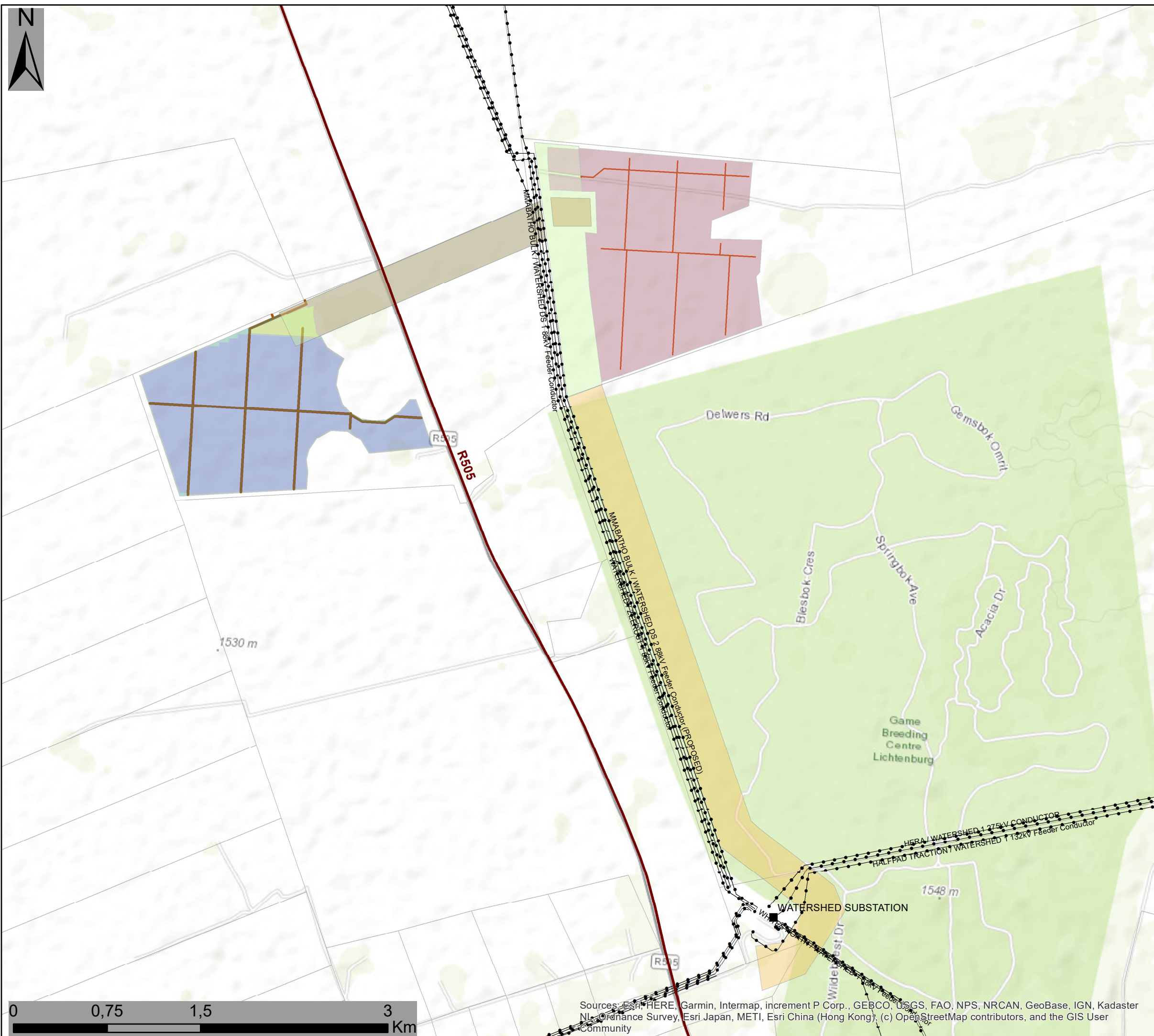
Legend

-  Existing Power Lines
-  Regional Road
-  Internal Roads
-  Farm Portions
- Infrastructure Layout**
-  Substation
-  Allocated Area
-  Fence
-  Laydown
-  O&M Building
-  PV Area
-  Reticulation Corridor

Scale: 1:30 000
 Projection: LO19
 Map Ref: L2 EMPr Layout



Sources: Esri, HERE, Garmin, Intermap, increment P Corp., GEBCO, USGS, FAO, NPS, NRCAN, GeoBase, IGN, Kadaster NL, Ordnance Survey, Esri Japan, METI, Esri China (Hong Kong), (c) OpenStreetMap contributors, and the GIS User Community



EMPR and layout update for Lichtenburg PV 2 & 3

Layout Map

Layout Amendments

- Eskom_Substations
- Regional Road
- Existing Power Lines

Infrastructure Layout 3

- Allocated Area
- Construction Power Supply
- Fence
- Footprint
- L3 OHL corridor 2
- Laydown Area
- O&M Building/Site Offices
- Optional Laydown Area
- Reticulation Corridor
- Substation
- Laydown area
- Substation
- Internal roads

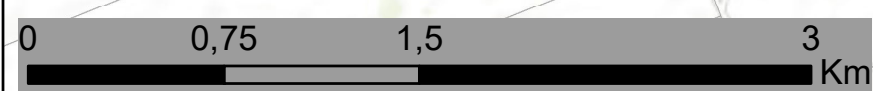
Infrastructure Layout 2

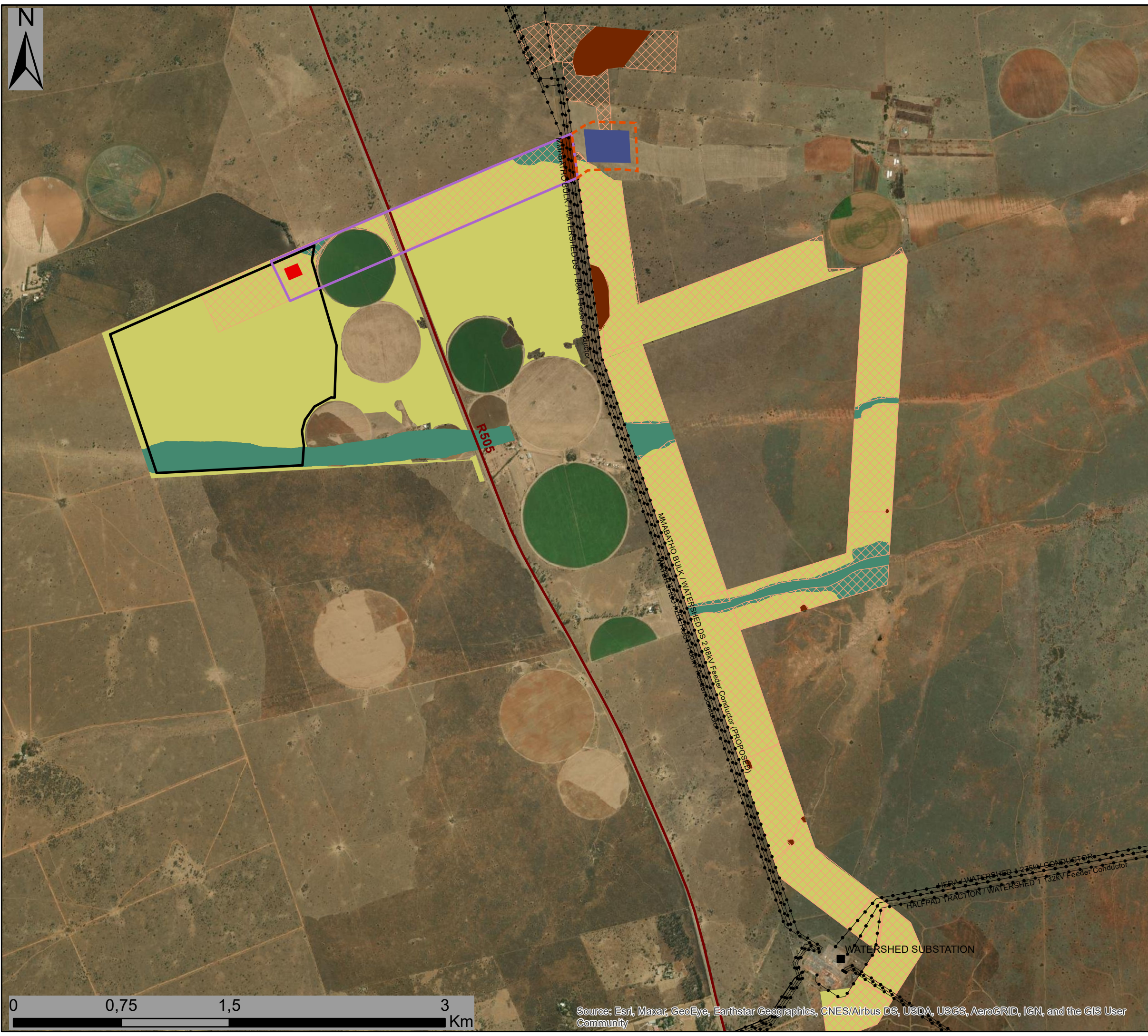
- Substation
- Allocated Area
- Fence
- Laydown
- O&M Building
- PV Area
- Reticulation Corridor
- Internal Roads

Scale: 1:30 000
 Projection: LO19
 Map Ref: L2 & L3 EMPr Layout



Sources: Esri, HERE, Garmin, Intermap, increment P Corp., GEBCO, USGS, FAO, NPS, NRCAN, GeoBase, IGN, Kadaster NL, Ordnance Survey, Esri Japan, METI, Esri China (Hong Kong), (c) OpenStreetMap contributors, and the GIS User Community





Lichtenburg 2 PV Facility & Associated Infrastructure EMPR & Layout Amendment

Layout & Sensitivity Map

Legend

- Eskom Substation
- Existing Power Lines
- Regional Road
- Collector Substation Complex (Proposed)
- Lichtenburg 2 Development Area (authorised)
- Power line corridor -Alternative 1 (previously assessed)
- Facility Substation (authorised)

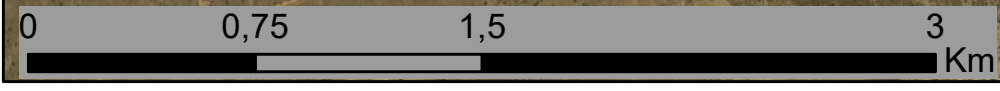
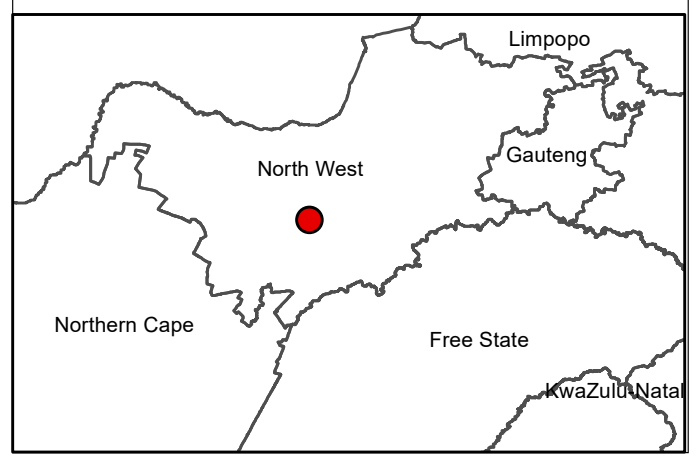
Layout Amendments

- Extension of power line corridor - Alternative 1

Environmental Sensitivity

- Medium Avifauna Sensitivity
- Moderate high Avifauna
- Elionurus muticus Savanna Grassland (Medium Ecological Sensitivity)
- Palaeo-Drainage Grassland (Medium Ecological Sensitivity)

Scale: 1:30 000
 Projection: LO19
 Map Ref: L2 Amendment Layout



Source: Esri, Maxar, GeoEye, Earthstar Geographics, CNES/Airbus DS, USDA, USGS, AeroGRID, IGN, and the GIS User Community