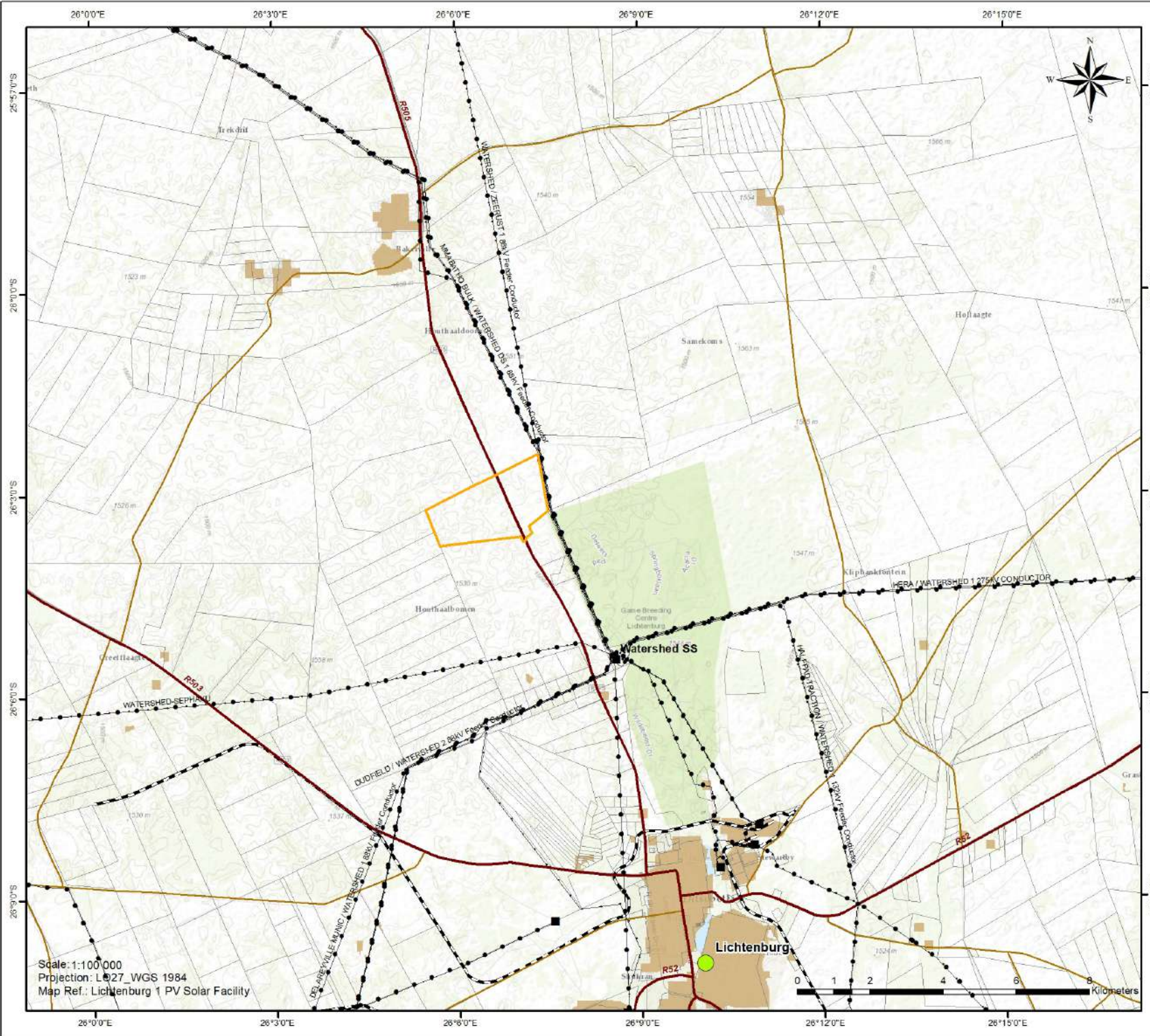


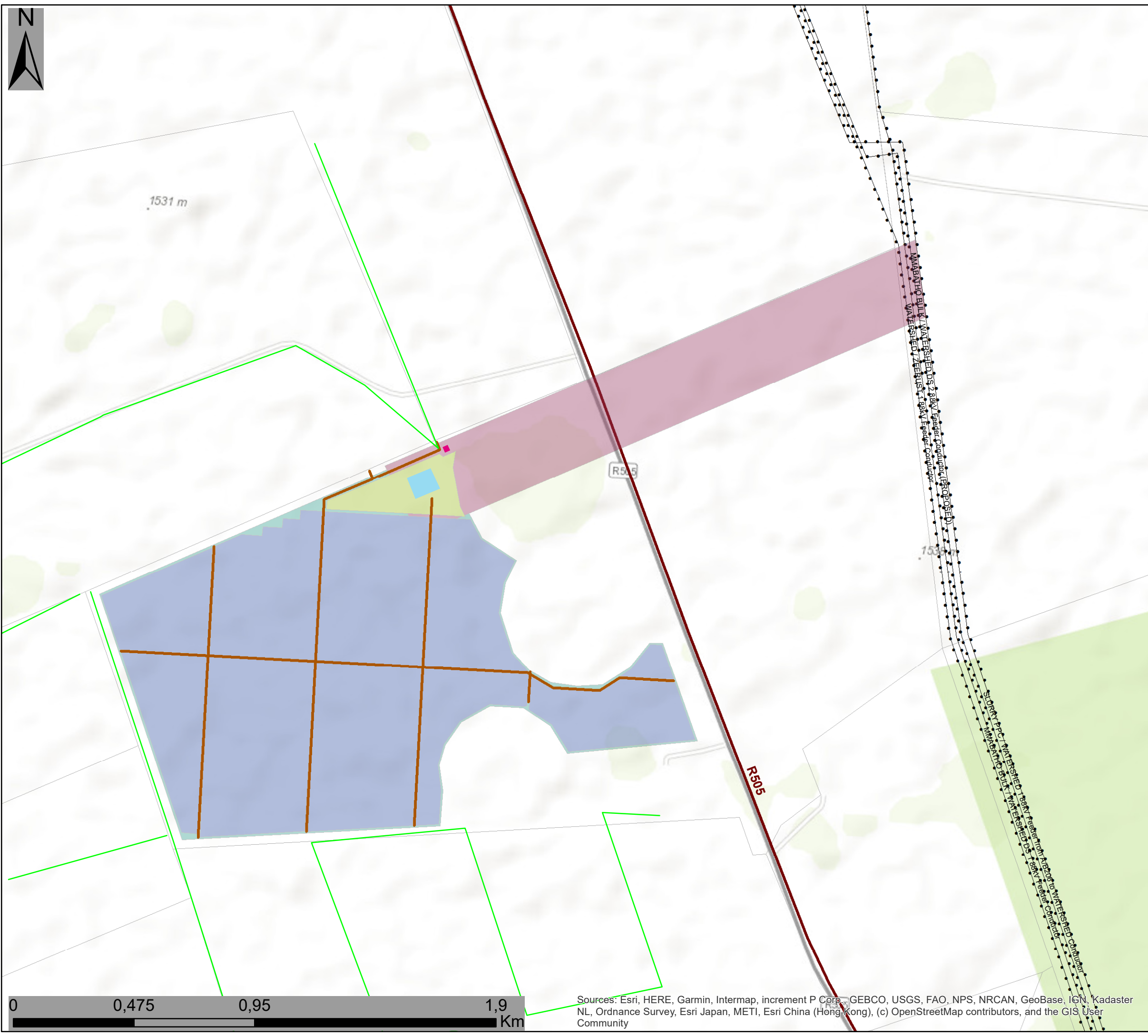
Lichtenburg 2 PV Locality Map



- ### Legend
- Lichtenburg 2
 - Town
 - Distribution substation
 - Existing power line
 - National route
 - Regional road
 - Main road
 - Railway Line
 - Farm Portions
 - Urban / Built-up Area

Scale: 1:100 000
 Projection: L027_WGS 1984
 Map Ref.: Lichtenburg 1 PV Solar Facility





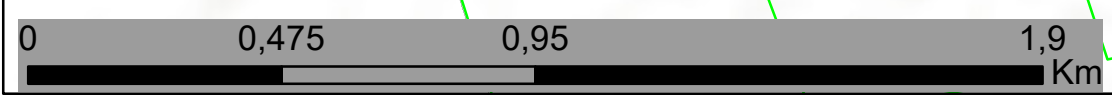
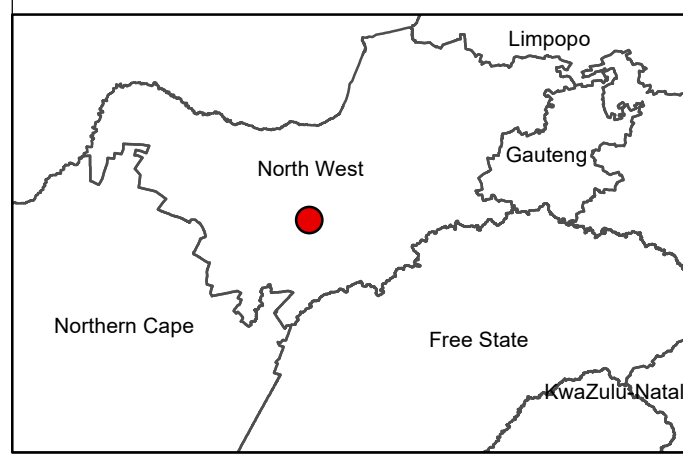
EMPR and layout update for Lichtenburg PV 2

Layout Map

Legend

- Secondary Roads
 - Existing Power Lines
 - Regional Road
 - Internal Roads
 - Farm Portions
- ### Infrastructure Layout
- Substation
 - Allocated
 - Fence
 - Laydown
 - O&M Building
 - PV
 - Reticulation Corridor

Scale: 1:30 000
 Projection: LO19
 Map Ref: L2 EMPr Layout



Sources: Esri, HERE, Garmin, Intermap, increment P Corp., GEBCO, USGS, FAO, NPS, NRCAN, GeoBase, IGN, Kadaster NL, Ordnance Survey, Esri Japan, METI, Esri China (Hong Kong), (c) OpenStreetMap contributors, and the GIS User Community



Lichtenburg 2 PV Facility & Associated Infrastructure EMPR & Layout Amendment Layout & Sensitivity Map

Legend

- Eskom Substation
- Existing Power Lines
- Regional Road
- Collector Substation Complex (Proposed)
- Lichtenburg 2 Development Area (authorised)
- Power Line Corridor -Alternative 1 (Previously Assessed)
- Facility Substation (Authorised)

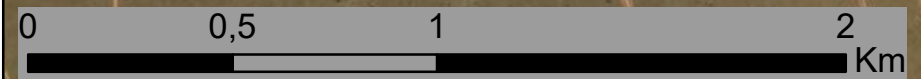
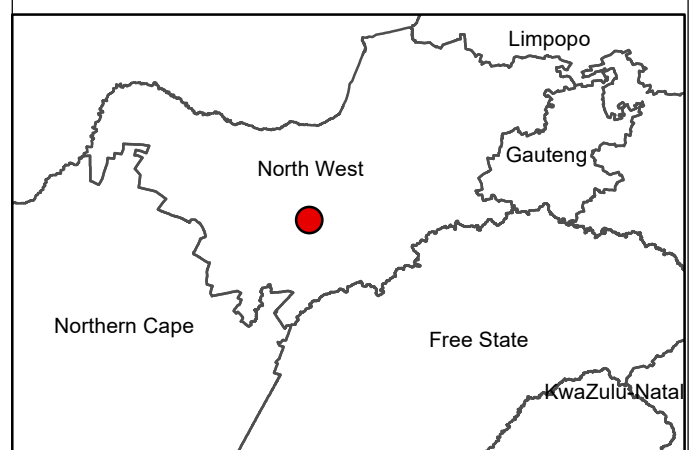
Layout Amendments

- Extension of power line corridor - Alternative 1

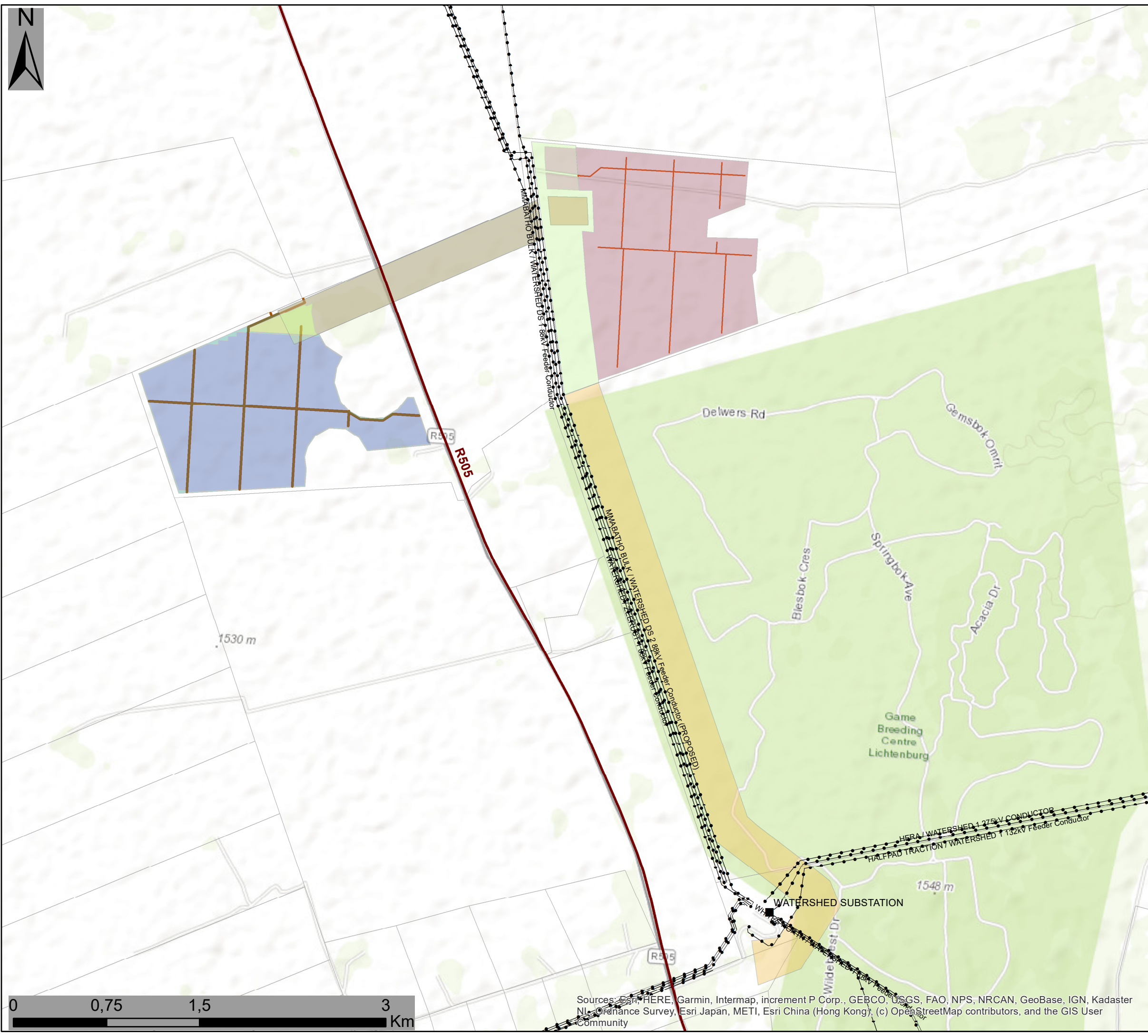
Environmental Sensitivity

- Medium Avifauna Sensitivity
- Moderate High Avifauna Sensitivity
- Elionurus muticus Savanna Grassland (Medium Ecological Sensitivity)
- Palaeo-Drainage Grassland (Medium Ecological Sensitivity)

Scale: 1:30 000
 Projection: LO19
 Map Ref: L2 Amendment Layout



Source: Esri, Maxar, Earthstar Geographics, and the GIS User Community



EMPR and layout update for Lichtenburg PV 2 & 3

Layout Map

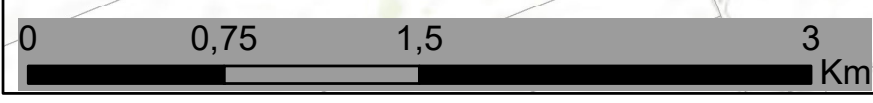
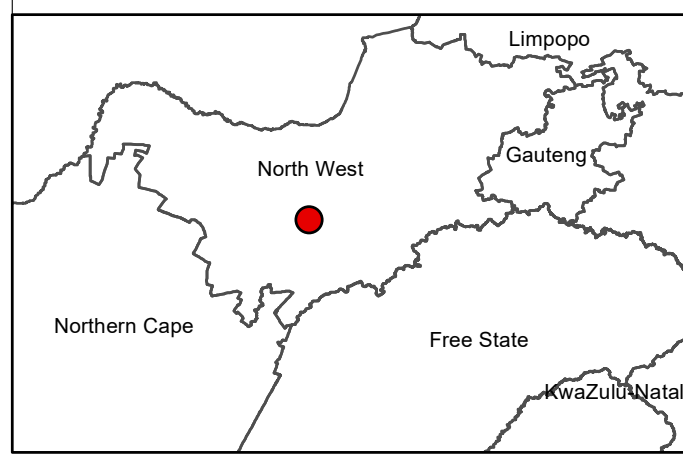
Layout Amendments

- Eskom_Substations
 - Regional Road
 - Existing Power Lines
- ### Infrastructure Layout 3
- Allocated Area
 - Construction Power Supply
 - Fence
 - Footprint
 - L3 OHL corridor 2
 - Laydown Area
 - O&M Building/Site Offices
 - Optional Laydown Area
 - Reticulation Corridor
 - Substation
 - Laydown area
 - Substation
 - Internal roads

Infrastructure Layout 2

- Substation
- Allocated Area
- Fence
- Laydown
- O&M Building
- PV Area
- Reticulation Corridor
- Internal Roads

Scale: 1:30 000
 Projection: LO19
 Map Ref: L2 & L3 EMPr Layout



Sources: Esri, HERE, Garmin, Intermap, increment P Corp., GEBCO, USGS, FAO, NPS, NRCAN, GeoBase, IGN, Kadaster NL, Ordnance Survey, Esri Japan, METI, Esri China (Hong Kong), (c) OpenStreetMap contributors, and the GIS User Community