

**SCREENING REPORT FOR AN ENVIRONMENTAL AUTHORIZATION AS
REQUIRED BY THE 2014 EIA REGULATIONS – PROPOSED SITE
ENVIRONMENTAL SENSITIVITY**

EIA Reference number: TBD

Project name: EIA for JN Venter Boerdery (Pty) Ltd Agricultural and Pipe Line Developments

Project title: JN Venter Boerdery (Pty) Ltd Agricultural and Pipe Line Developments Free State Province

Date screening report generated: 04/03/2022 11:04:49

Applicant: JN Venter Boerdery (Pty) Ltd

Compiler: Savannah Environmental

Compiler signature:

L. Phere

Application Category: Agriculture_Forestry_Fisheries|Crop Production

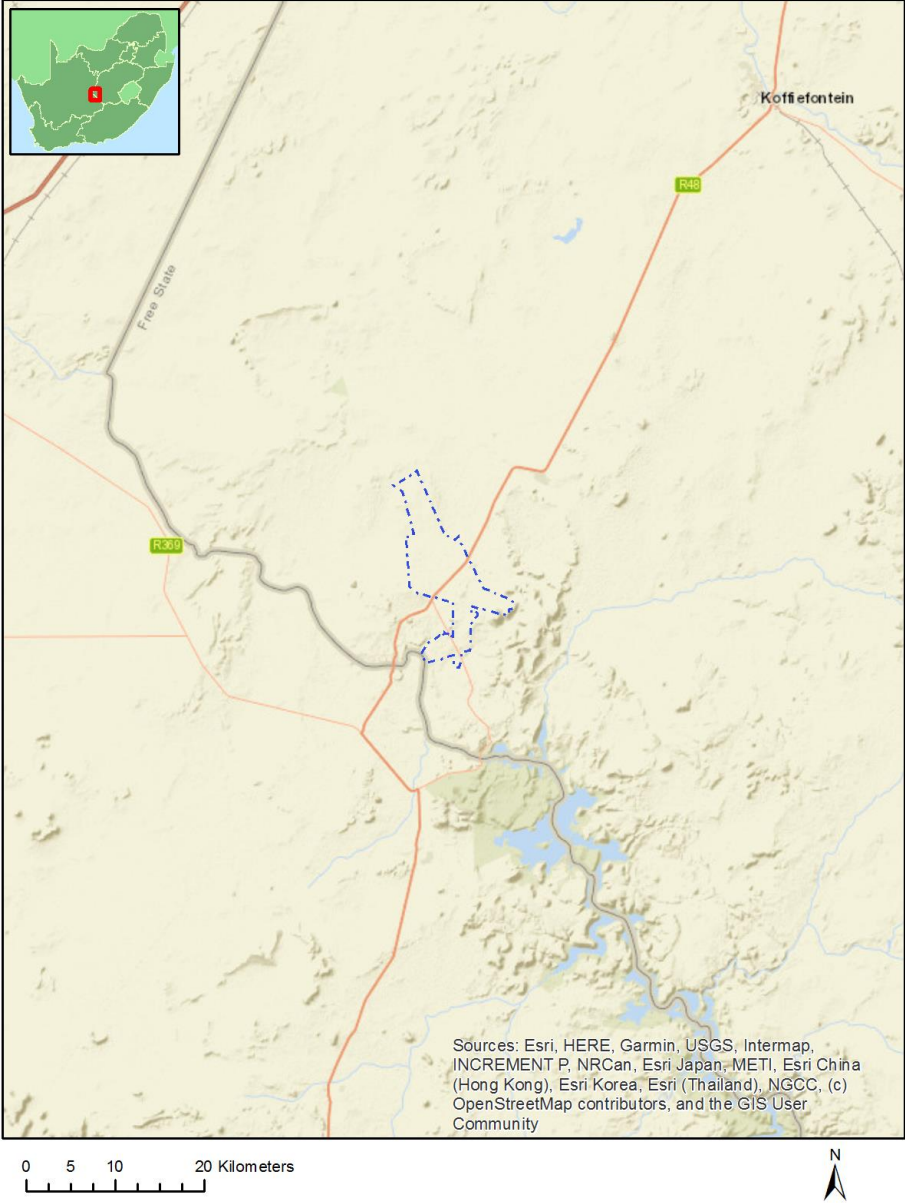
Table of Contents

Proposed Project Location	3
Orientation map 1: General location	3
Map of proposed site and relevant area(s)	4
Cadastral details of the proposed site	4
Wind and Solar developments with an approved Environmental Authorisation or applications under consideration within 30 km of the proposed area	6
Environmental Management Frameworks relevant to the application	6
Environmental screening results and assessment outcomes	6
Relevant development incentives, restrictions, exclusions or prohibitions	6
Map indicating proposed development footprint within applicable development incentive, restriction, exclusion or prohibition zones	7
Proposed Development Area Environmental Sensitivity	7
Specialist assessments identified	8
Results of the environmental sensitivity of the proposed area	10
MAP OF RELATIVE AGRICULTURE THEME SENSITIVITY	10
MAP OF RELATIVE ANIMAL SPECIES THEME SENSITIVITY	11
MAP OF RELATIVE AQUATIC BIODIVERSITY THEME SENSITIVITY	12
MAP OF RELATIVE ARCHAEOLOGICAL AND CULTURAL HERITAGE THEME SENSITIVITY	13
MAP OF RELATIVE CIVIL AVIATION THEME SENSITIVITY	14
MAP OF RELATIVE DEFENCE THEME SENSITIVITY	15
MAP OF RELATIVE PALEONTOLOGY THEME SENSITIVITY	16
MAP OF RELATIVE PLANT SPECIES THEME SENSITIVITY	17
MAP OF RELATIVE TERRESTRIAL BIODIVERSITY THEME SENSITIVITY	18

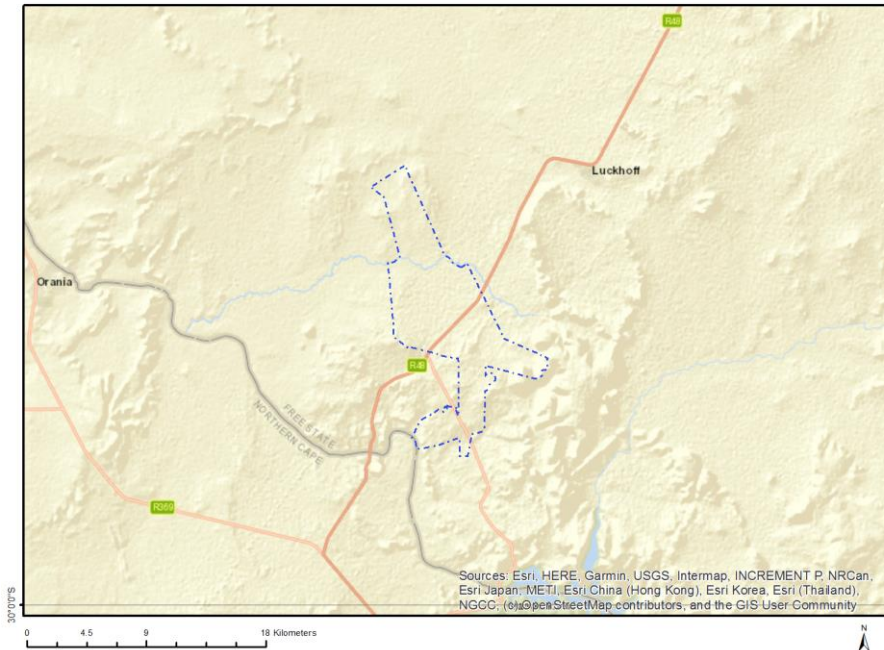
Proposed Project Location

Orientation map 1: General location

General Orientation: EIA for JN Venter Boerdery (Pty) Ltd Agricultural and Pipe Line Developments



Map of proposed site and relevant area(s)



Cadastral details of the proposed site

Property details:

No	Farm Name	Farm/ Erf No	Portion	Latitude	Longitude	Property Type
1	RONDEFONTEIN	99	0	29°52'15.53S	24°39'55.61E	Farm
2	LOMBARDSDAM	81	0	29°54'19.47S	24°44'24.16E	Farm
3	NAAUWPOORT	417	0	29°55'4.25S	24°41'9.94E	Farm
4	LEMOEN-SPRUIT	667	0	29°46'58.56S	24°39'49.45E	Farm
5	ONVERSCHOT	830	0	29°45'56.75S	24°40'47.75E	Farm
6	OU RONDEFONTEIN	146	0	29°53'10.26S	24°41'39.51E	Farm
7	GROOTPOORT	168	0	29°50'34.27S	24°41'23.14E	Farm
8	DIEPDRAAI	754	0	29°49'40.19S	24°42'19.41E	Farm
9	BLAAUWKOPJE	776	0	29°47'5.46S	24°36'42.95E	Farm
10	EXCELSIOR	800	0	29°45'21.79S	24°39'25.38E	Farm
11	KLEIN GRYSKOP	445	0	29°46'26.41S	24°42'43.72E	Farm
12	EXCELSIOR	676	0	29°52'37.76S	24°40'50.95E	Farm
13	SCHEIDING	1252	0	29°52'46.17S	24°42'10.92E	Farm
14	OU RONDEFONTEIN	146	0	29°53'6.34S	24°41'0.51E	Farm
15	OU RONDEFONTEIN	146	0	29°54'14.12S	24°41'17.33E	Farm
16	NELSDAM	649	0	29°44'18.38S	24°38'43.4E	Farm
17	EXCELSIOR	800	0	29°45'21.79S	24°39'25.38E	Farm
18	GRUISRAND	59	0	29°51'44.41S	24°38'23.74E	Farm
19	OU RONDEFONTEIN	146	0	29°52'55.43S	24°41'26.28E	Farm
20	BRAKDAM	704	0	29°44'6.81S	24°40'55.25E	Farm
21	WELTEVREDEN	755	0	29°48'55.55S	24°40'11.17E	Farm
22	OU RONDEFONTEIN	1251	0	29°53'46.6S	24°40'49.26E	Farm

23	KRAAIBOSCH	15	0	29°55'27.09S	24°37'52.34E	Farm
24	VINGER-KRAAL	368	0	29°52'40.07S	24°44'10.17E	Farm
25	HONDELAAGTE	276	0	29°46'57.22S	24°38'21.09E	Farm
26	DUNDEE	416	0	29°55'17.47S	24°43'7.4E	Farm
27	JOOSTENBERG	462	0	29°51'28.48S	24°46'30.57E	Farm
28	NELSDAM OOST	993	0	29°43'18.58S	24°39'30.64E	Farm
29	RONDEFONTEIN	99	1	29°51'41.61S	24°40'12.03E	Farm Portion
30	OU RONDEFONTEIN	146	5	29°54'14.4S	24°41'18.35E	Farm Portion
31	GROOTPOORT	168	0	29°50'39.46S	24°42'18.97E	Farm Portion
32	KLEIN GRYSKOP	445	0	29°46'26.74S	24°42'50.69E	Farm Portion
33	HONDELAAGTE	276	0	29°46'57.22S	24°38'21.09E	Farm Portion
34	NAAUWPOORT	417	5	29°54'24.08S	24°41'59.44E	Farm Portion
35	NAAUWPOORT	417	4	29°54'11.2S	24°41'37.96E	Farm Portion
36	GRUISRAND	59	1	29°50'28.05S	24°37'54.16E	Farm Portion
37	LOMBARDSDAM	81	0	29°54'17.56S	24°44'30.61E	Farm Portion
38	OU RONDEFONTEIN	146	2	29°52'52.97S	24°41'35.36E	Farm Portion
39	GROOTPOORT	168	1	29°50'29.08S	24°40'27.35E	Farm Portion
40	DUNDEE	416	4	29°54'23.48S	24°42'14.07E	Farm Portion
41	NAAUWPOORT	417	6	29°54'58.87S	24°41'56.17E	Farm Portion
42	BLAAUWKOPJE	776	0	29°47'7.48S	24°36'49.34E	Farm Portion
43	NAAUWPOORT	417	0	29°55'6.69S	24°41'7.06E	Farm Portion
44	JOOSTENBERG	462	0	29°51'47.74S	24°46'5.32E	Farm Portion
45	DUNDEE	416	0	29°55'17.88S	24°43'7.8E	Farm Portion
46	DIEPDRAAI	754	0	29°50'10.31S	24°43'6.39E	Farm Portion
47	KRAAIBOSCH	15	1	29°54'21.04S	24°39'41.62E	Farm Portion
48	KRAAIBOSCH	15	14	29°54'43.88S	24°39'39.65E	Farm Portion
49	OU RONDEFONTEIN	146	4	29°53'11.36S	24°41'41.03E	Farm Portion
50	VINGER-KRAAL	368	0	29°52'39.29S	24°44'16.12E	Farm Portion
51	NELSDAM	649	0	29°44'18.38S	24°38'43.4E	Farm Portion
52	OU RONDEFONTEIN	1251	0	29°53'56.94S	24°40'44.07E	Farm Portion
53	OU RONDEFONTEIN	146	3	29°53'5.01S	24°41'5.41E	Farm Portion
54	LEMOEN-SPRUIT	667	0	29°46'59.68S	24°39'56.17E	Farm Portion
55	EXCELSIOR	676	0	29°52'34.74S	24°40'57.52E	Farm Portion
56	EXCELSIOR	800	0	29°45'23.74S	24°39'23.77E	Farm Portion
57	NELSDAM OOST	993	0	29°43'18.58S	24°39'30.64E	Farm Portion
58	SCHEIDING	1252	0	29°52'44.89S	24°42'16.24E	Farm Portion
59	NAAUWPOORT	417	3	29°54'20.03S	24°41'5.26E	Farm Portion
60	WELTEVREDEN	755	0	29°48'56.89S	24°40'10.47E	Farm Portion
61	ONVERSCHOT	830	0	29°45'58.84S	24°40'52.73E	Farm Portion
62	BRAKDAM	704	0	29°43'54.88S	24°40'54.29E	Farm Portion
63	DIEPDRAAI	754	3	29°49'26.34S	24°41'52.26E	Farm Portion

Development footprint¹ vertices:
No development footprint(s) specified.

¹ “development footprint”, means the area within the site on which the development will take place and includes all ancillary developments for example roads, power lines, boundary walls, paving etc. which require vegetation clearance or which will be disturbed and for which the application has been submitted.

Wind and Solar developments with an approved Environmental Authorisation or applications under consideration within 30 km of the proposed area

No nearby wind or solar developments found.

Environmental Management Frameworks relevant to the application

No intersections with EMF areas found.

Environmental screening results and assessment outcomes

The following sections contain a summary of any development incentives, restrictions, exclusions or prohibitions that apply to the proposed development site as well as the most environmental sensitive features on the site based on the site sensitivity screening results for the application classification that was selected. The application classification selected for this report is:

Agriculture_Forestry_Fisheries|Crop Production.

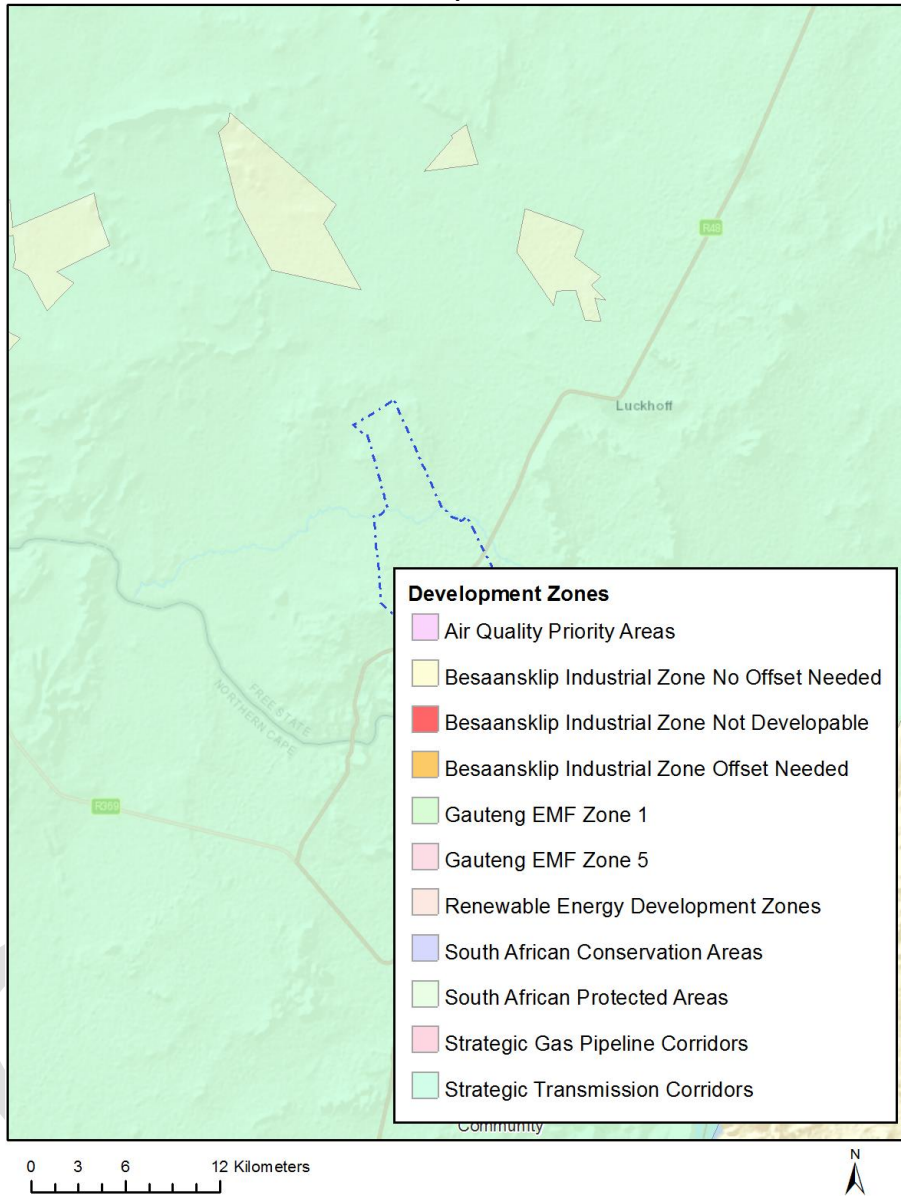
Relevant development incentives, restrictions, exclusions or prohibitions

The following development incentives, restrictions, exclusions or prohibitions and their implications that apply to this site are indicated below.

Incentive, restriction or prohibition	Implication
Strategic Transmission Corridor-Central corridor	https://screening.environment.gov.za/ScreeningDownloads/DevelopmentZones/Combined_EGI.pdf

Map indicating proposed development footprint within applicable development incentive, restriction, exclusion or prohibition zones

Project Location: EIA for JN Venter Boerdery (Pty) Ltd Agricultural and Pipe Line Developments



Proposed Development Area Environmental Sensitivity

The following summary of the development site environmental sensitivities is identified. Only the highest environmental sensitivity is indicated. The footprint environmental sensitivities for the proposed development footprint as identified, are indicative only and must be verified on site by a suitably qualified person before the specialist assessments identified below can be confirmed.

Theme	Very High sensitivity	High sensitivity	Medium sensitivity	Low sensitivity
-------	-----------------------	------------------	--------------------	-----------------

Agriculture Theme	X			
Animal Species Theme		X		
Aquatic Biodiversity Theme	X			
Archaeological and Cultural Heritage Theme				X
Civil Aviation Theme				X
Defence Theme				X
Paleontology Theme		X		
Plant Species Theme			X	
Terrestrial Biodiversity Theme	X			

Specialist assessments identified

Based on the selected classification, and the environmental sensitivities of the proposed development footprint, the following list of specialist assessments have been identified for inclusion in the assessment report. It is the responsibility of the EAP to confirm this list and to motivate in the assessment report, the reason for not including any of the identified specialist study including the provision of photographic evidence of the site situation.

N	Specialist assessment	Assessment Protocol
1	Agricultural Impact Assessment	https://screening.environment.gov.za/ScreeningDownloads/AssessmentProtocols/Gazetted_General_Agriculture_Assessment_Protocols.pdf
2	Landscape/Visual Impact Assessment	https://screening.environment.gov.za/ScreeningDownloads/AssessmentProtocols/Gazetted_General_Requirement_Assessment_Protocols.pdf
3	Archaeological and Cultural Heritage Impact Assessment	https://screening.environment.gov.za/ScreeningDownloads/AssessmentProtocols/Gazetted_General_Requirement_Assessment_Protocols.pdf
4	Palaeontology Impact Assessment	https://screening.environment.gov.za/ScreeningDownloads/AssessmentProtocols/Gazetted_General_Requirement_Assessment_Protocols.pdf
5	Terrestrial Biodiversity Impact Assessment	https://screening.environment.gov.za/ScreeningDownloads/AssessmentProtocols/Gazetted_Terrestrial_Biodiversity_Assessment_Protocols.pdf
6	Aquatic Biodiversity Impact Assessment	https://screening.environment.gov.za/ScreeningDownloads/AssessmentProtocols/Gazetted_Aquatic_Biodiversity_Assessment_Protocols.pdf

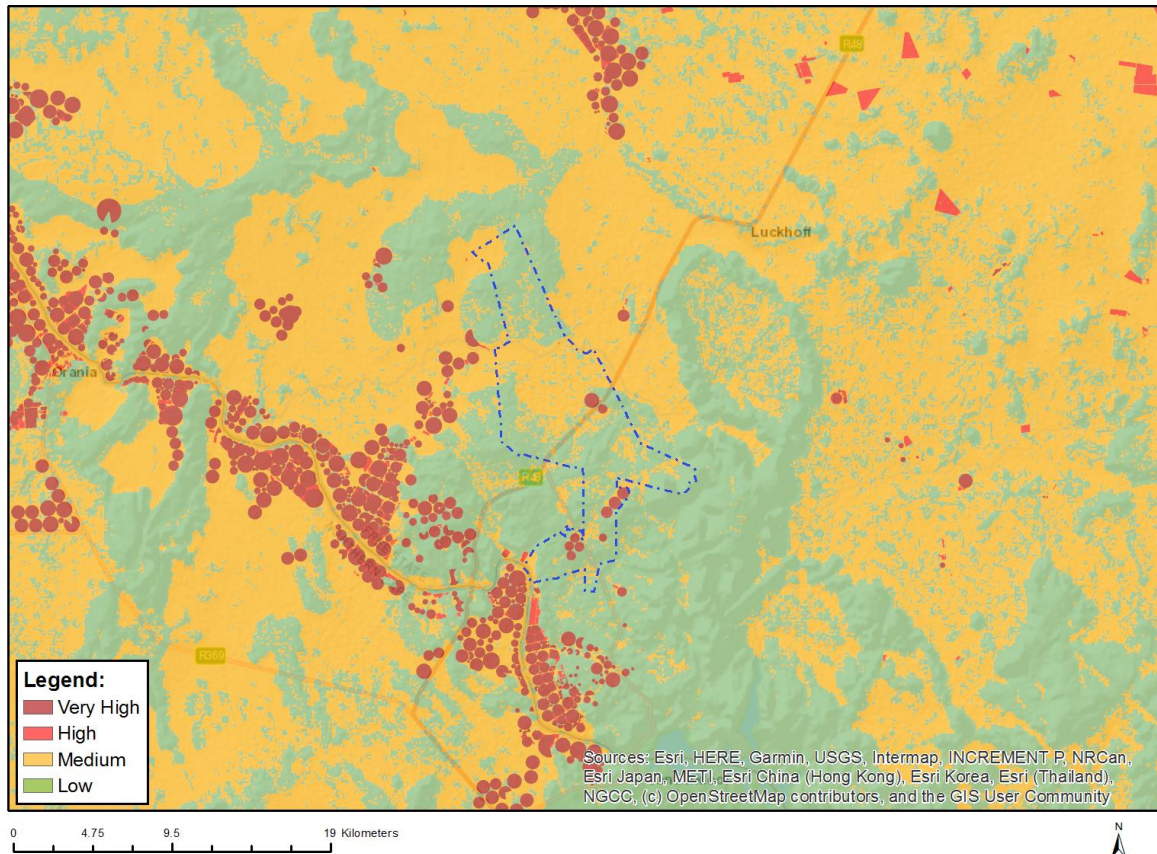
7	Hydrology Assessment	https://screening.environment.gov.za/ScreeningDownloads/AssessmentProtocols/Gazetted_General_Requirement_Assessment_Protocols.pdf
8	Socio-Economic Assessment	https://screening.environment.gov.za/ScreeningDownloads/AssessmentProtocols/Gazetted_General_Requirement_Assessment_Protocols.pdf
9	Plant Species Assessment	https://screening.environment.gov.za/ScreeningDownloads/AssessmentProtocols/Gazetted_Plant_Species_Assessment_Protocols.pdf
10	Animal Species Assessment	https://screening.environment.gov.za/ScreeningDownloads/AssessmentProtocols/Gazetted_Animal_Species_Assessment_Protocols.pdf

OFFICIAL

Results of the environmental sensitivity of the proposed area.

The following section represents the results of the screening for environmental sensitivity of the proposed site for relevant environmental themes associated with the project classification. It is the duty of the EAP to ensure that the environmental themes provided by the screening tool are comprehensive and complete for the project. Refer to the disclaimer.

MAP OF RELATIVE AGRICULTURE THEME SENSITIVITY

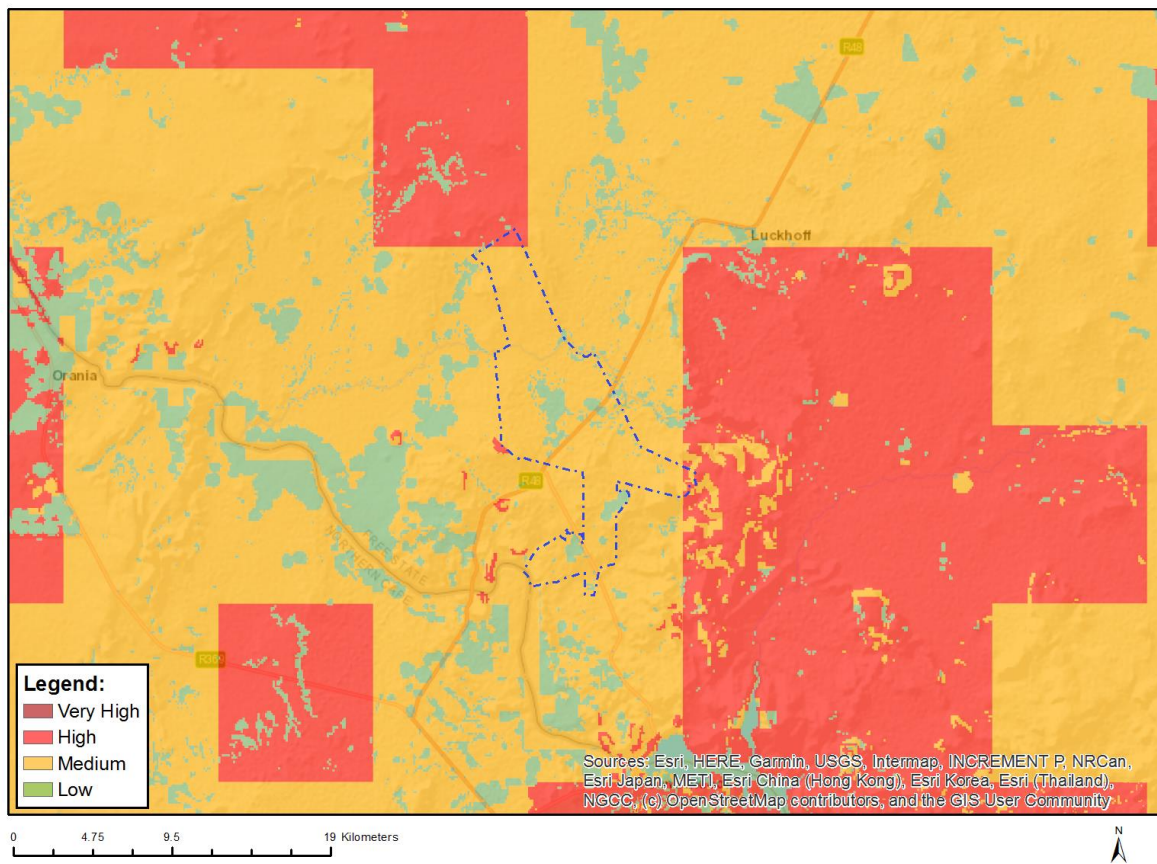


Very High sensitivity	High sensitivity	Medium sensitivity	Low sensitivity
X			

Sensitivity Features:

Sensitivity	Feature(s)
High	Annual Crop Cultivation / Planted Pastures Rotation; Land capability; 06. Low-Moderate/07. Low-Moderate/08. Moderate
Low	Land capability; 01. Very low/02. Very low/03. Low-Very low/04. Low-Very low/05. Low
Medium	Land capability; 06. Low-Moderate/07. Low-Moderate/08. Moderate
Very High	Pivot Irrigation; Land capability; 01. Very low/02. Very low/03. Low-Very low/04. Low-Very low/05. Low
Very High	Pivot Irrigation; Land capability; 06. Low-Moderate/07. Low-Moderate/08. Moderate

MAP OF RELATIVE ANIMAL SPECIES THEME SENSITIVITY



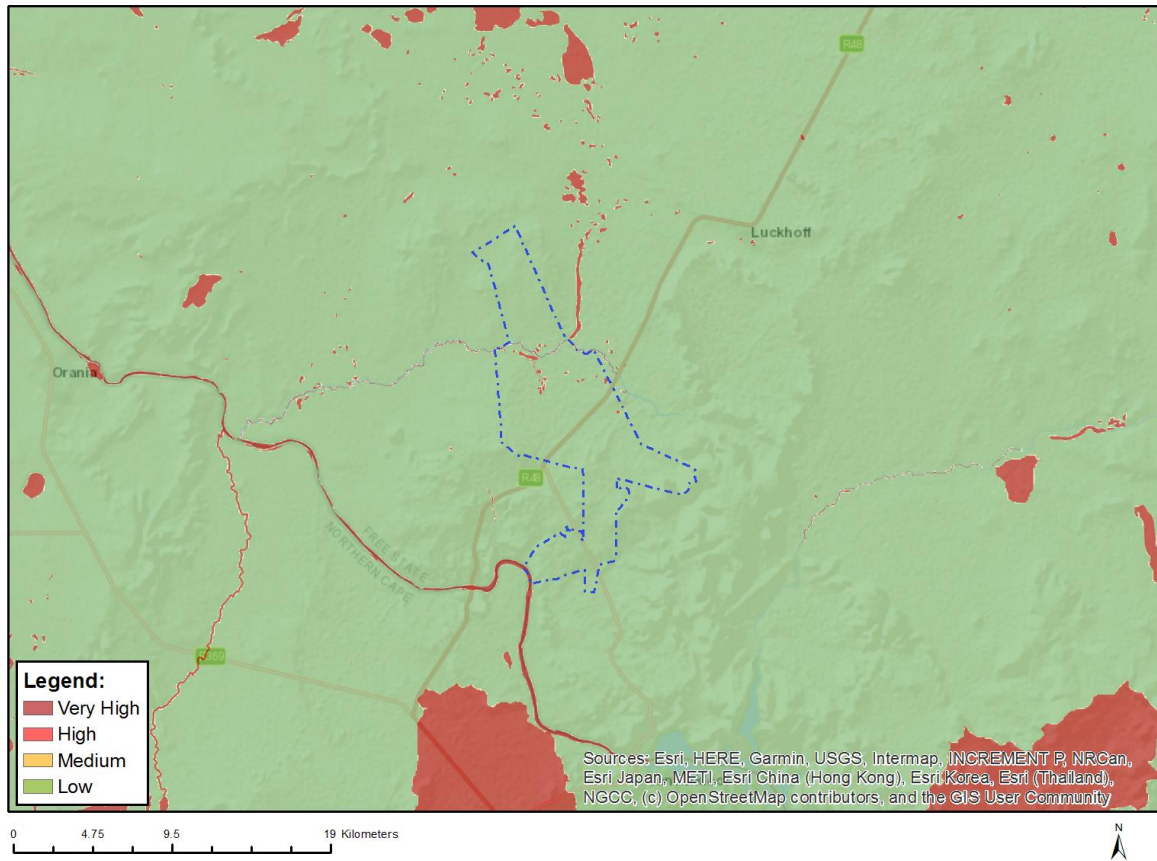
Where only a sensitive plant unique number or sensitive animal unique number is provided in the screening report and an assessment is required, the environmental assessment practitioner (EAP) or specialist is required to email SANBI at eiadatarequests@sanbi.org.za listing all sensitive species with their unique identifiers for which information is required. The name has been withheld as the species may be prone to illegal harvesting and must be protected. SANBI will release the actual species name after the details of the EAP or specialist have been documented.

Very High sensitivity	High sensitivity	Medium sensitivity	Low sensitivity
	X		

Sensitivity Features:

Sensitivity	Feature(s)
High	Mammalia-Redunca fulvorufula fulvorufula
High	Aves-Neotis ludwigii
Low	Low sensitivity
Medium	Aves-Neotis ludwigii
Medium	Aves-Aquila verreauxii
Medium	Mammalia-Hydrictis maculicollis

MAP OF RELATIVE AQUATIC BIODIVERSITY THEME SENSITIVITY

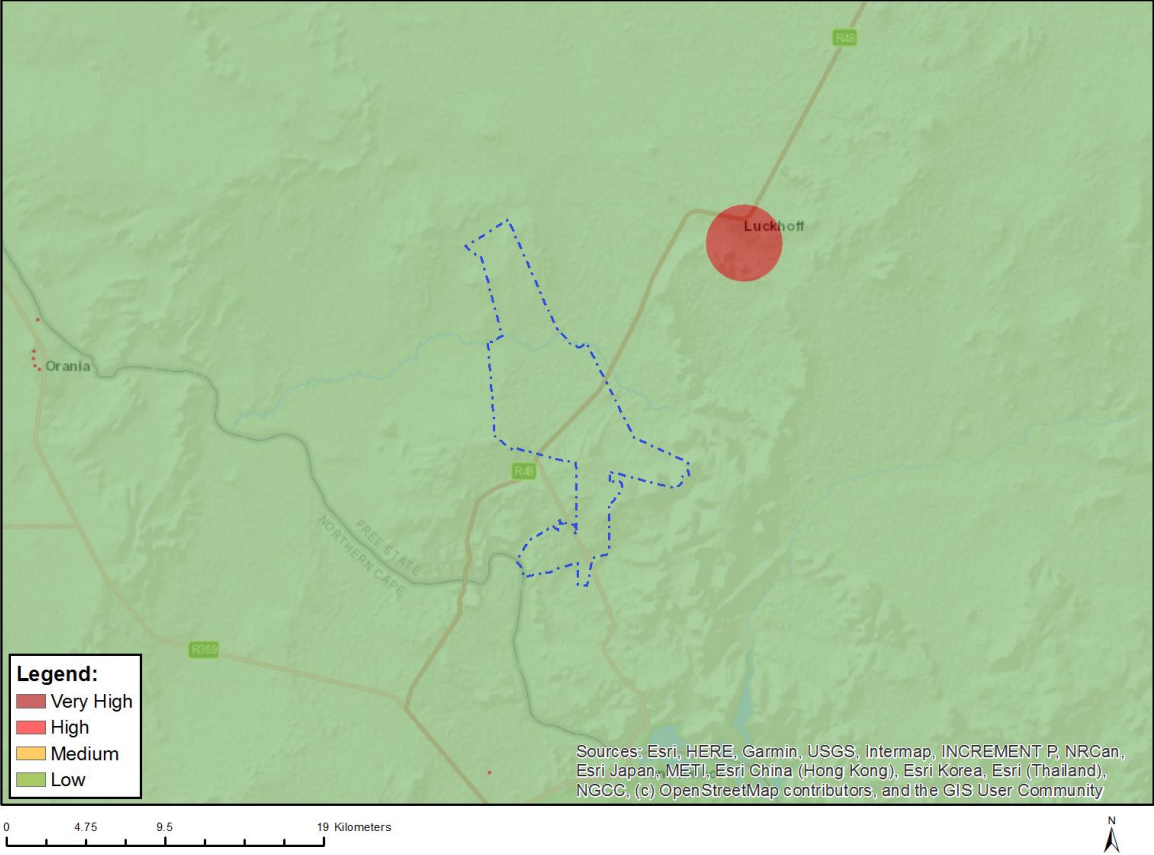


Very High sensitivity	High sensitivity	Medium sensitivity	Low sensitivity
X			

Sensitivity Features:

Sensitivity	Feature(s)
Low	Low sensitivity
Very High	Wetlands and Estuaries

MAP OF RELATIVE ARCHAEOLOGICAL AND CULTURAL HERITAGE THEME SENSITIVITY

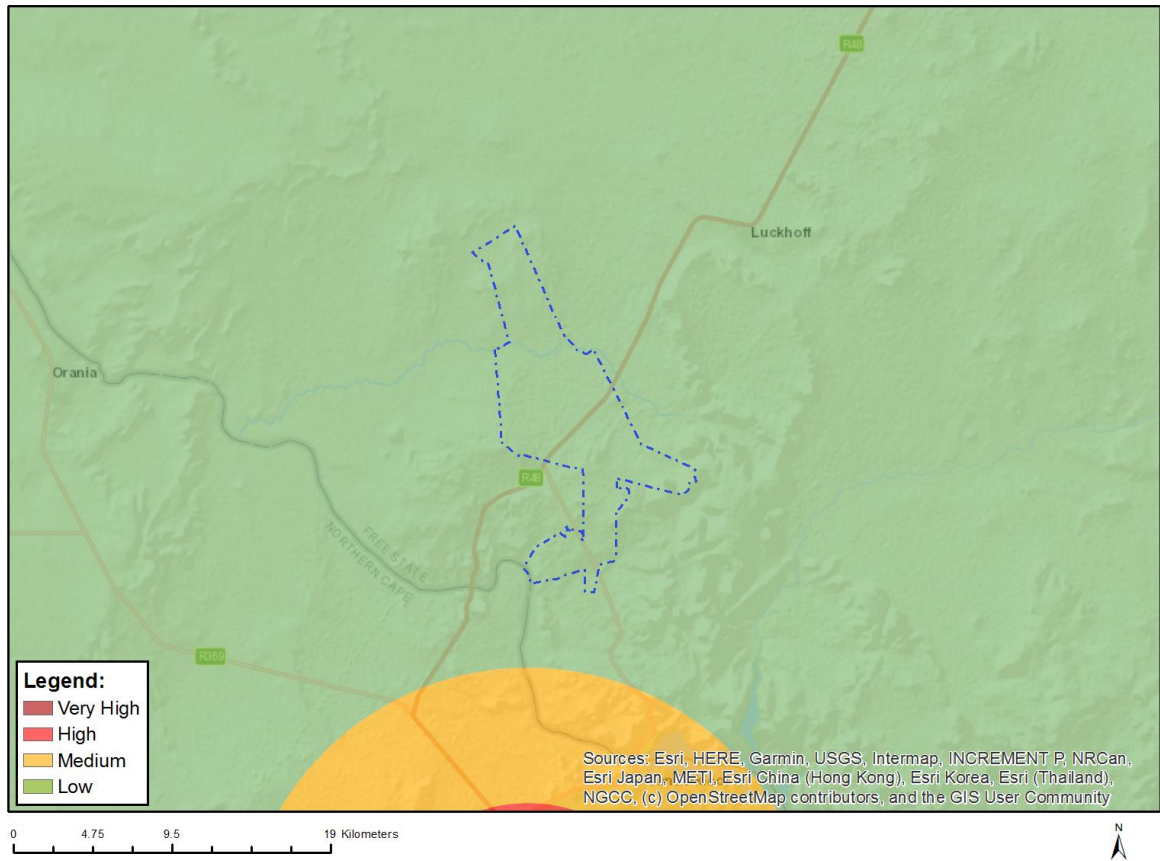


Very High sensitivity	High sensitivity	Medium sensitivity	Low sensitivity
			X

Sensitivity Features:

Sensitivity	Feature(s)
Low	Low sensitivity

MAP OF RELATIVE CIVIL AVIATION THEME SENSITIVITY

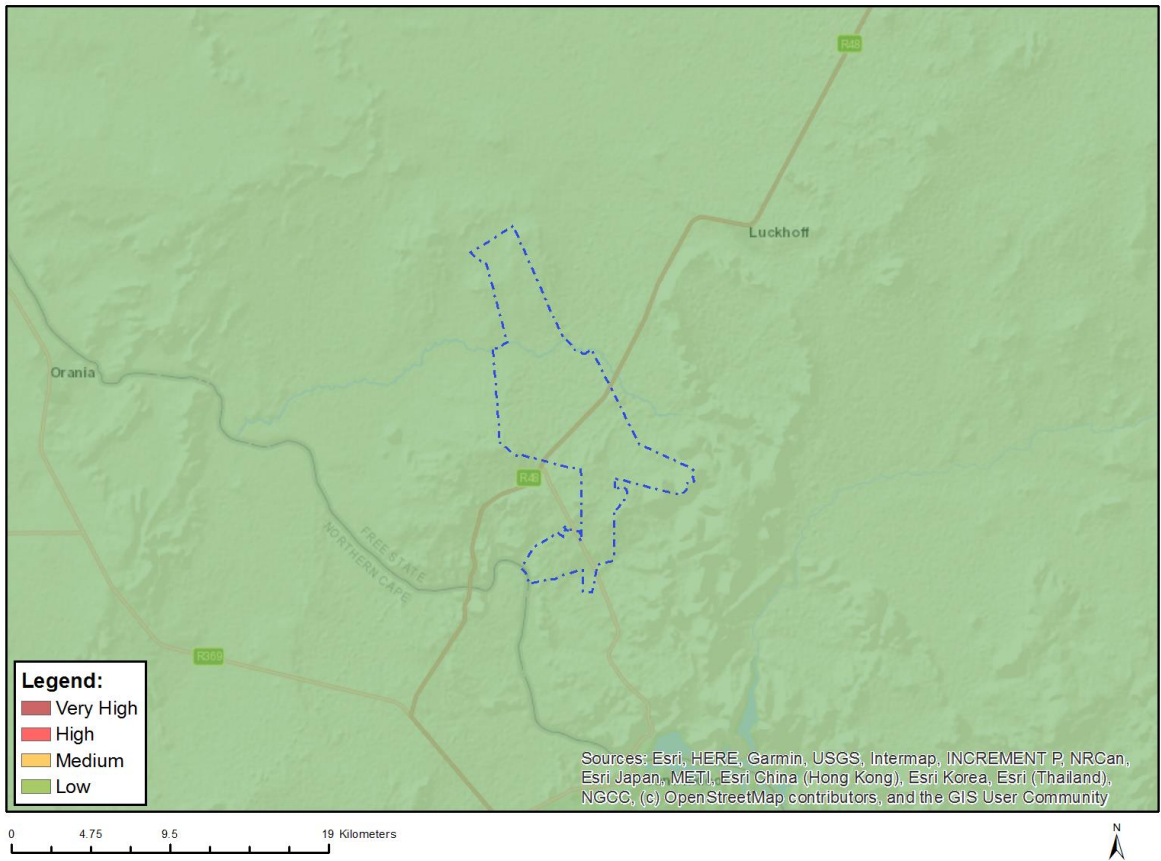


Very High sensitivity	High sensitivity	Medium sensitivity	Low sensitivity
			X

Sensitivity Features:

Sensitivity	Feature(s)
Low	Low sensitivity

MAP OF RELATIVE DEFENCE THEME SENSITIVITY

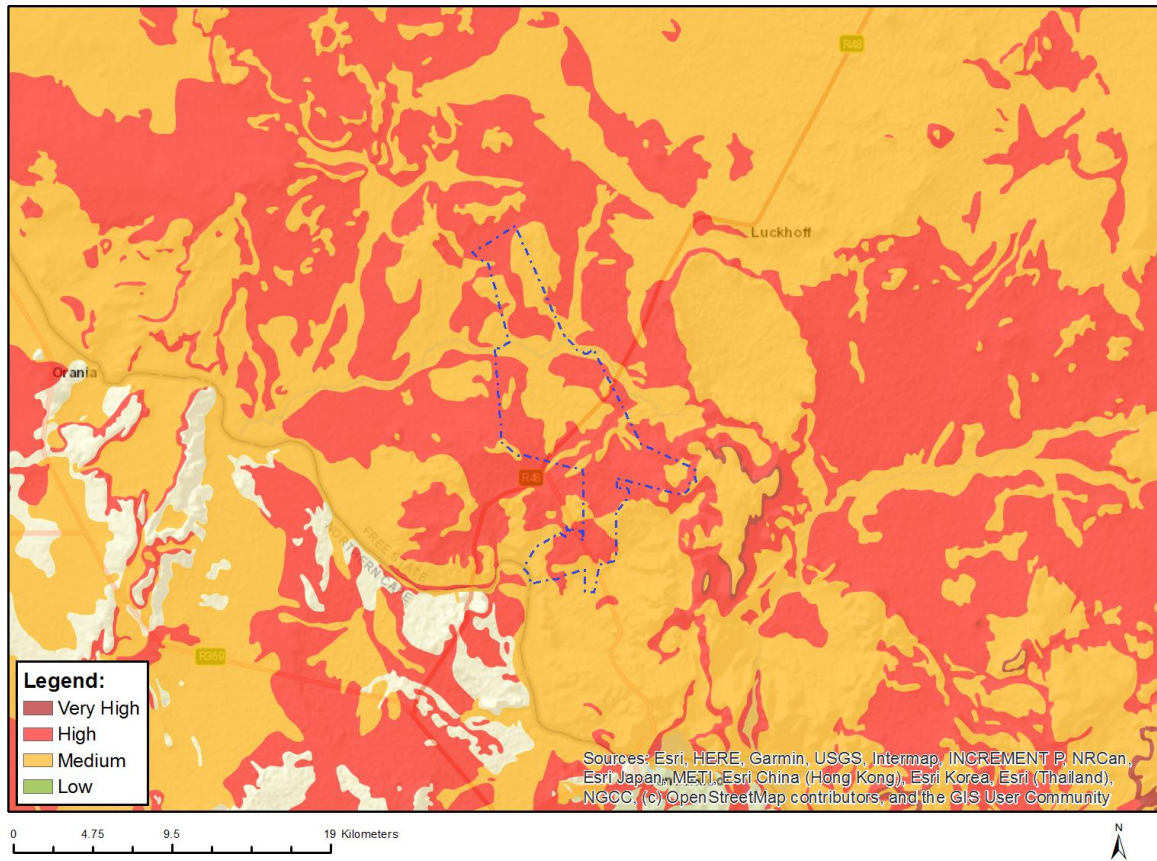


Very High sensitivity	High sensitivity	Medium sensitivity	Low sensitivity
			X

Sensitivity Features:

Sensitivity	Feature(s)
Low	Low Sensitivity

MAP OF RELATIVE PALEONTOLOGY THEME SENSITIVITY

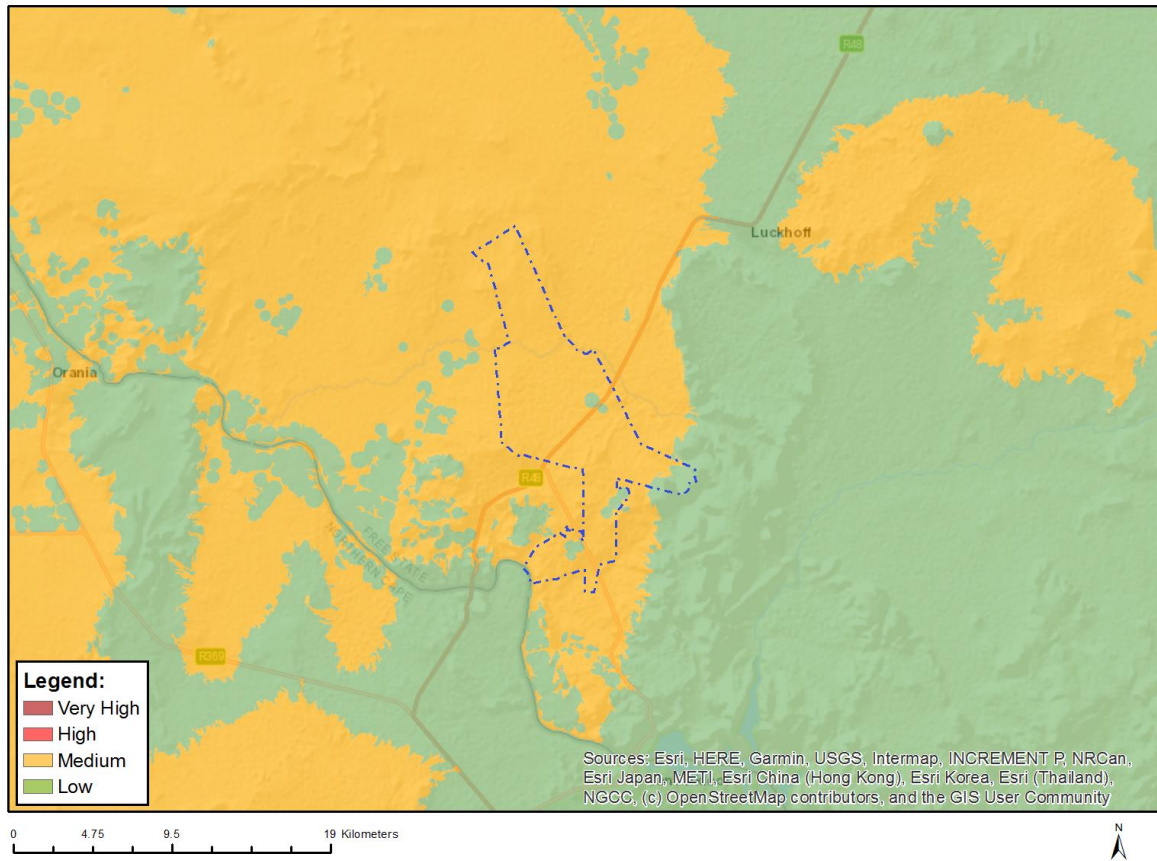


Very High sensitivity	High sensitivity	Medium sensitivity	Low sensitivity
	X		

Sensitivity Features:

Sensitivity	Feature(s)
High	Features with a High paleontological sensitivity
Medium	Features with a Medium paleontological sensitivity

MAP OF RELATIVE PLANT SPECIES THEME SENSITIVITY



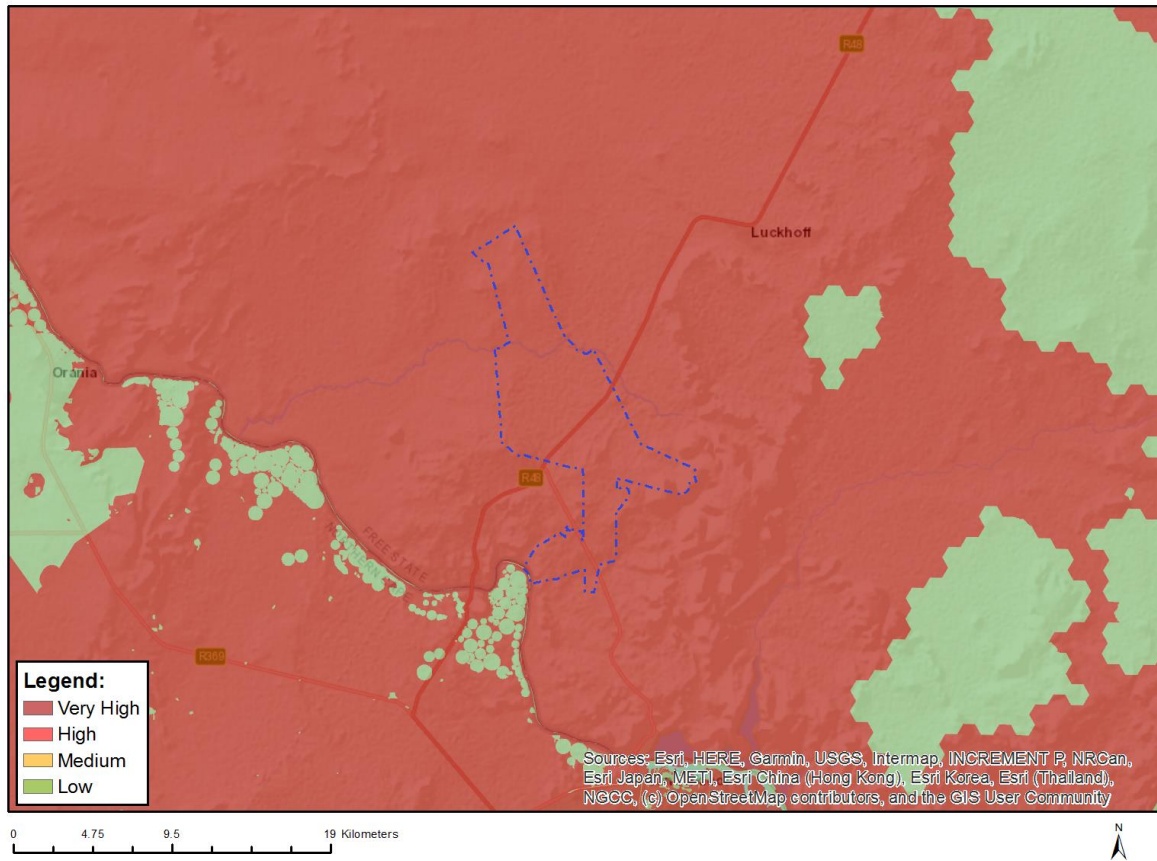
Where only a sensitive plant unique number or sensitive animal unique number is provided in the screening report and an assessment is required, the environmental assessment practitioner (EAP) or specialist is required to email SANBI at eiadatarequests@sanbi.org.za listing all sensitive species with their unique identifiers for which information is required. The name has been withheld as the species may be prone to illegal harvesting and must be protected. SANBI will release the actual species name after the details of the EAP or specialist have been documented.

Very High sensitivity	High sensitivity	Medium sensitivity	Low sensitivity
		X	

Sensitivity Features:

Sensitivity	Feature(s)
Low	Low Sensitivity
Medium	Tridentea virescens

MAP OF RELATIVE TERRESTRIAL BIODIVERSITY THEME SENSITIVITY



Very High sensitivity	High sensitivity	Medium sensitivity	Low sensitivity
X			

Sensitivity Features:

Sensitivity	Feature(s)
Low	Low Sensitivity
Very High	Critical biodiversity area 1
Very High	Critical biodiversity area 2
Very High	Ecological support area 1
Very High	Ecological support area 2
Very High	Protected Areas Expansion Strategy