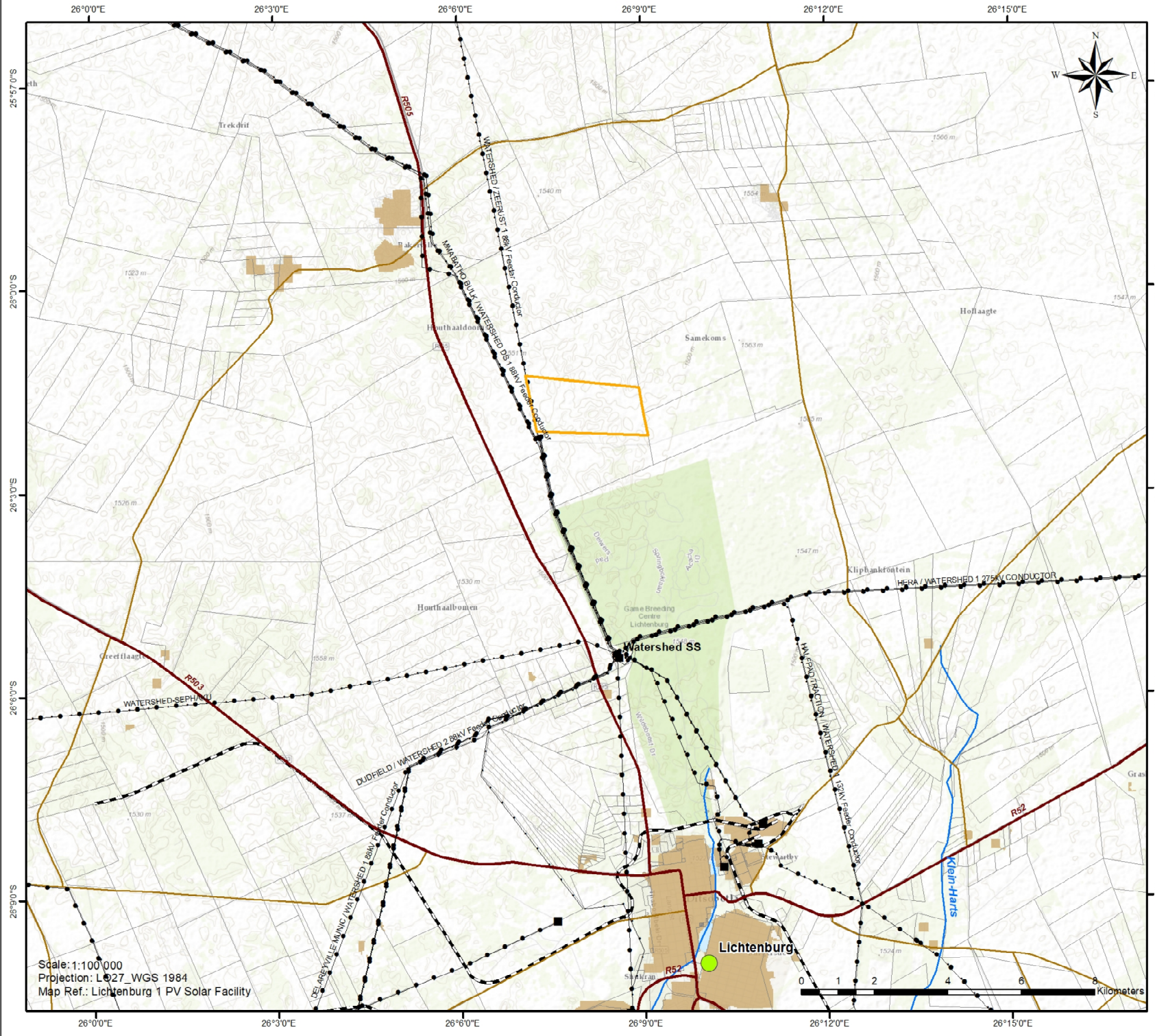


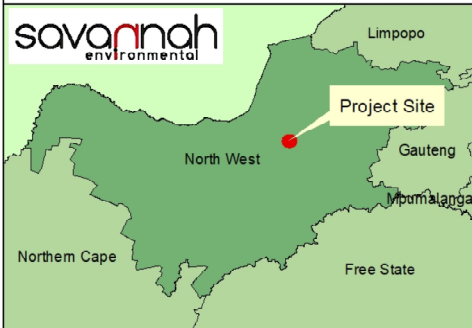
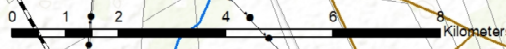
Lichtenburg 1 PV Locality Map

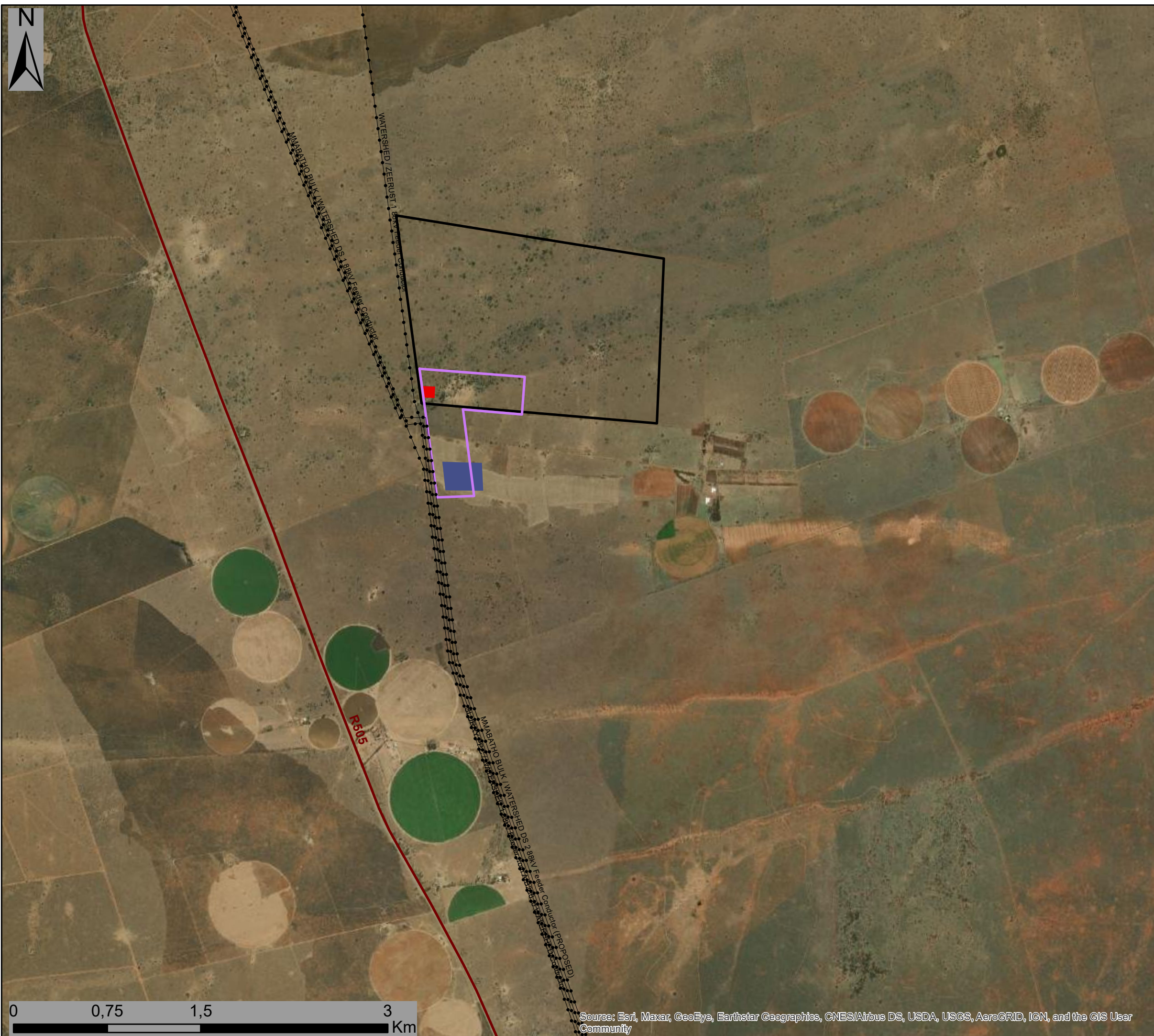
Legend

- Lichtenburg 1
- Town
- Distribution Substation
- Existing power line
- National Route
- Regional Road
- Main Road
- Railway Line
- River
- Cadastral Boundary
- Urban / Built-up Area



Scale: 1:100 000
 Projection: L027_WGS 1984
 Map Ref.: Lichtenburg 1 PV Solar Facility





Lichtenburg 1 PV Facility & Associated Infrastructure Part 2 Amendment Layout Map

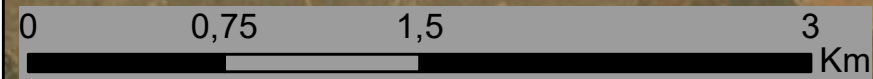
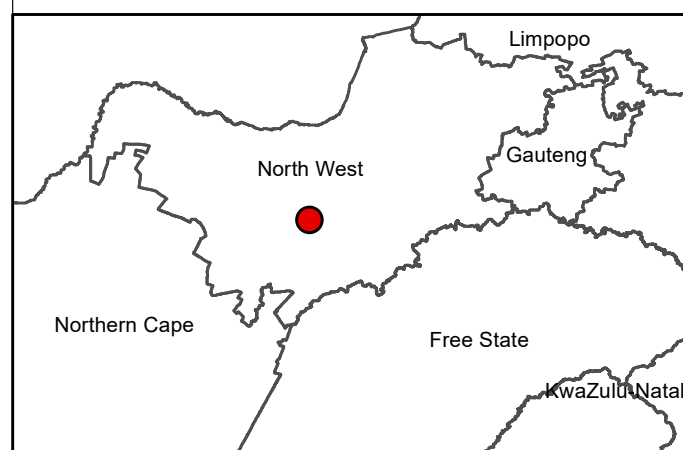
Legend

- Eskom Substation
- Existing Power Lines
- Regional Road
- Lichtenburg 2 Development Area (authorised)
- Collector Substation Complex (Proposed)
- Facility Substation (authorised)

Layout Amendments

- Power line corridor - Alternative 2

Scale: 1:30 000
 Projection: LO19
 Map Ref: L1 Amendment Layout



Source: Esri, Maxar, GeoEye, Earthstar Geographics, CNES/Airbus DS, USDA, USGS, AeroGRID, IGN, and the GIS User Community



Lichtenburg 1 PV Facility & Associated Infrastructure Part 2 Amendment Sensitivity & Layout Map

Legend

- Eskom Substation
- Existing Power Lines
- Regional Road
- Lichtenburg 2 Development Area (authorised)
- Collector Substation Complex (Proposed)
- Facility Substation (authorised)

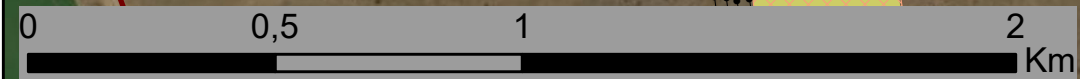
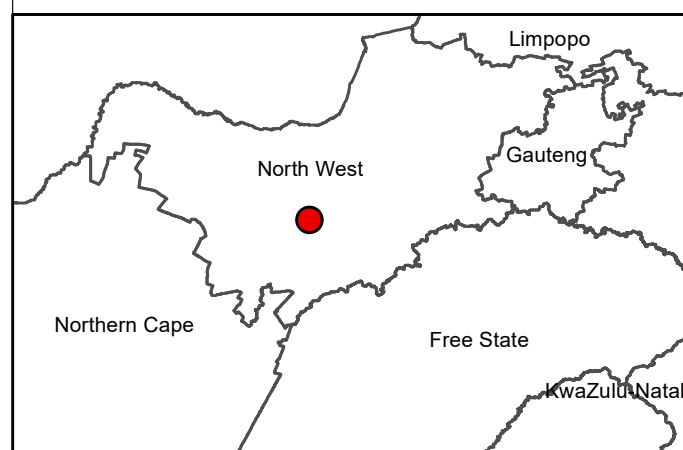
Layout Amendments

- Power line corridor - Alternative 2

Environmental Sensitivity

- ▨ Medium Avifauna Sensitivity
- Moderate high Avifauna Sensitivity
- Elionurus muticus Savanna Grassland (Medium Ecological Sensitivity)
- Palaeo-Drainage Grassland (Medium Ecological Sensitivity)

Scale: 1:30 000
 Projection: LO19
 Map Ref: L1 Amendment Layout



Source: Esri, Maxar, GeoEye, Earthstar Geographics, CNES/Airbus DS, USDA, USGS, AeroGRID, IGN, and the GIS User Community