









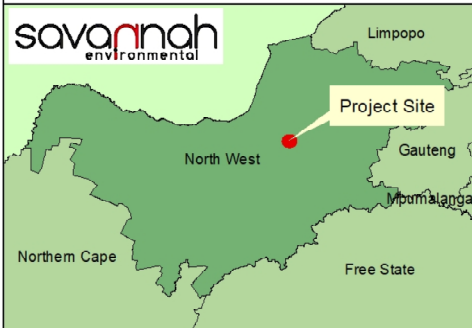


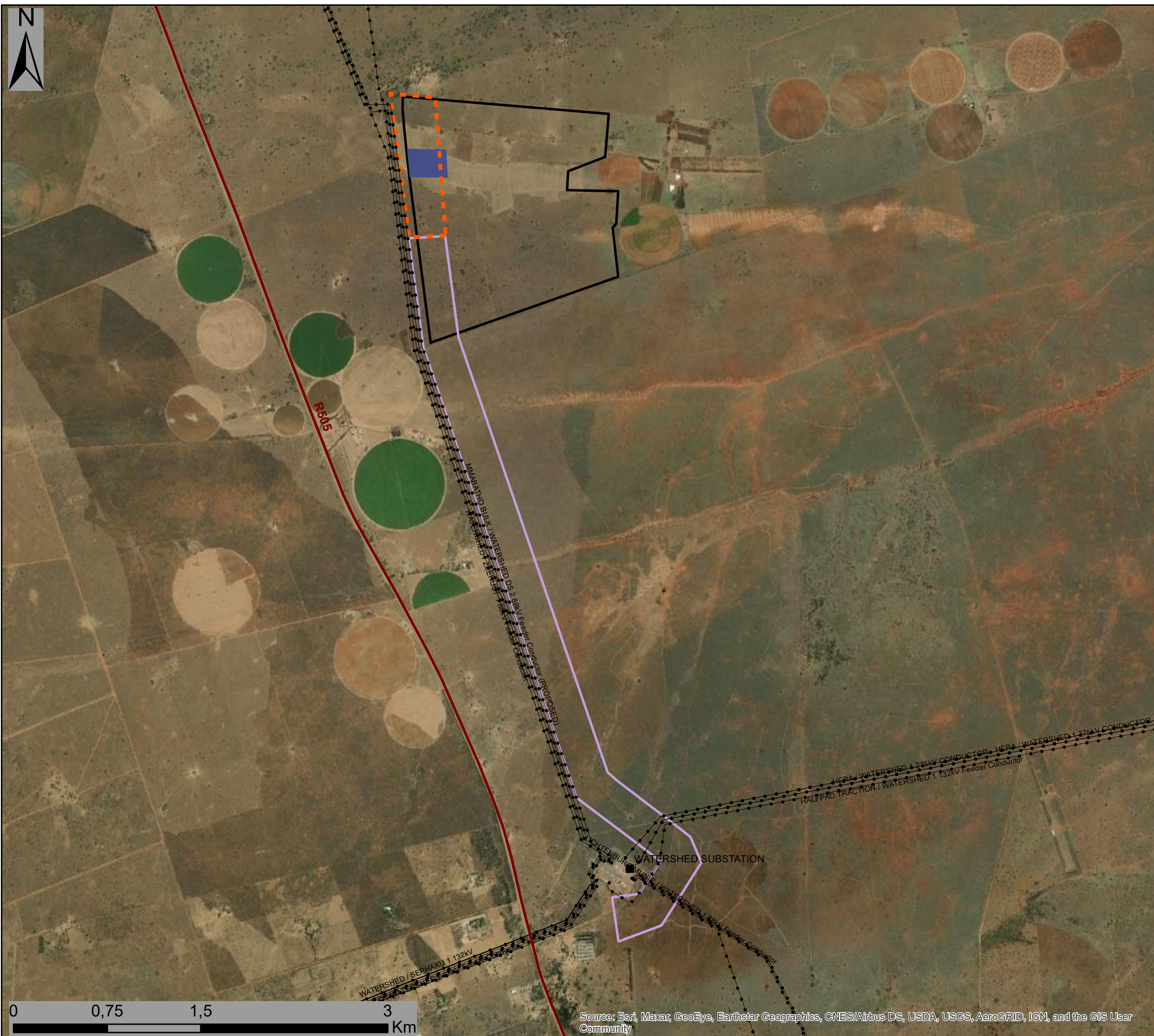
Lichtenburg 3 PV Locality Map

Legend

-  Lichtenburg 3
-  Town
-  Distribution substation
-  Existing power line
-  National route
-  Regional road
-  Main road
-  Railway Line
-  Farm Portions
-  Urban / Built-up Area

Scale: 1:100 000
 Projection: L027_WGS 1984
 Map Ref.: Lichtenburg 1 PV Solar Facility





Lichtenburg 3 PV Facility & Associated Infrastructure Part 2 Amendment Layout Map

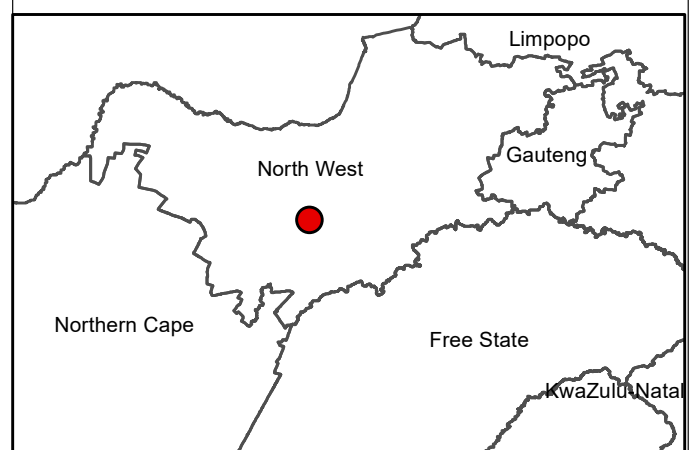
Legend

- Eskom Substation
- Existing Power Lines
- Regional Road
- Main Road
- ▭ Power line corridor - Alternative 2 (Previously assessed)
- ▭ Lichtenburg 3 Development Area (authorised)

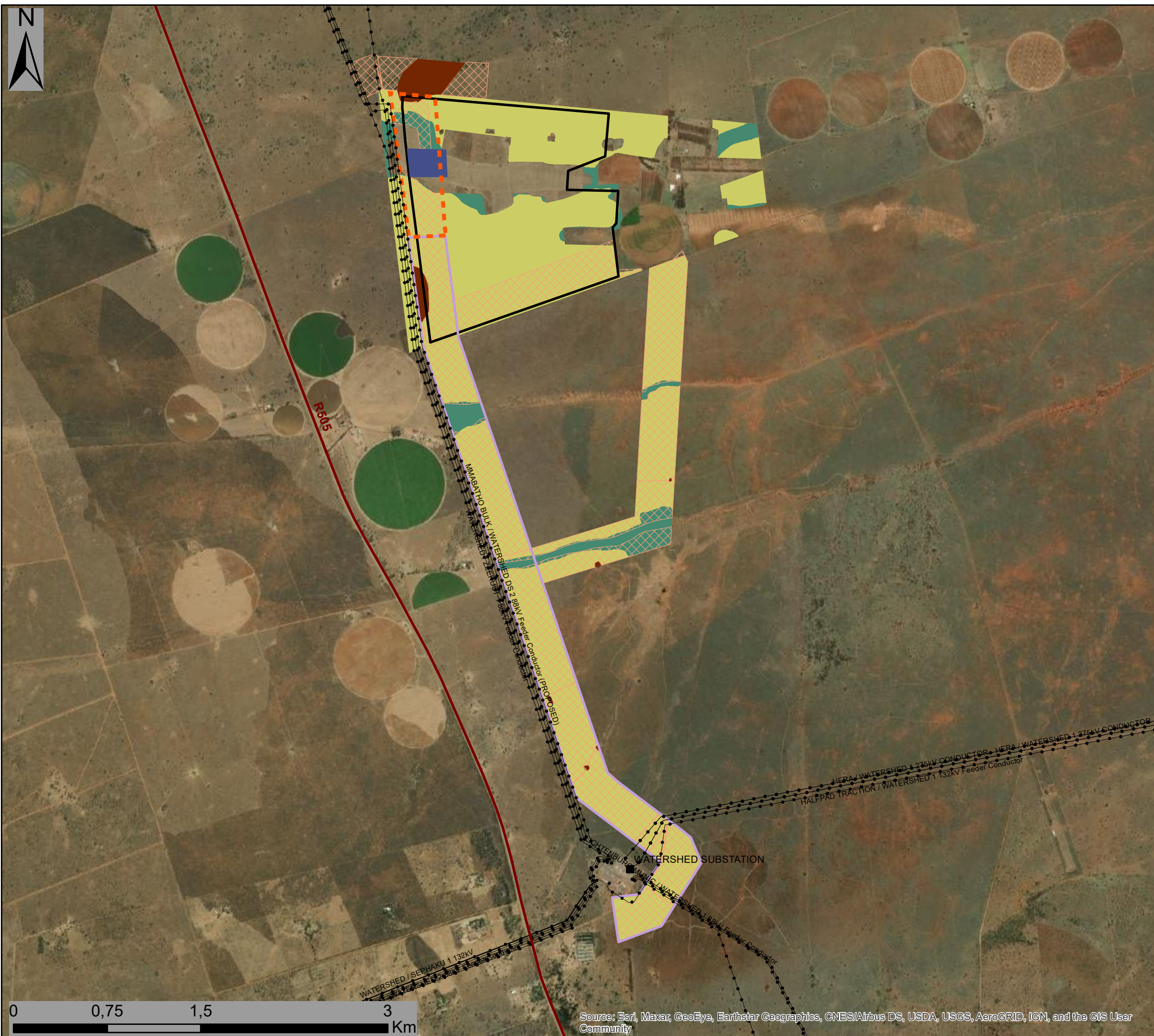
Layout Amendments

- ▭ Extension of power line corridor - Alternative 2
- ▭ Collector Substation Complex

Scale: 1:30 000
 Projection: LO19
 Map Ref: L3 Amendment Layout



Source: Esri, Maxar, GeoEye, Earthstar Geographics, CNES/Airbus DS, USDA, USGS, AeroGRID, IGN, and the GIS User Community



Lichtenburg 3 PV Facility & Associated Infrastructure Part 2 Amendment Sensitivity & Layout Map

Legend

- Eskom Substation
- Existing Power Lines
- Regional Road
- Main Road
- Power line corridor - Alternative 2 (Previously assessed)
- Lichtenburg 3 Development Area (authorised)

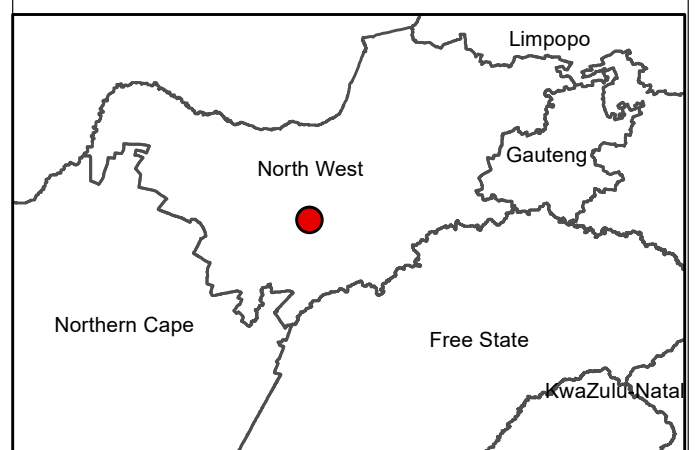
Layout Amendments

- Extension of power line corridor - Alternative 2
- Collector Substation Complex

Environmental Sensitivity

- Medium Avifauna Sensitivity
- Moderate high Avifauna Sensitivity
- Elionurus muticus Savanna Grassland (Medium Ecological Sensitivity)
- Palaeo-Drainage Grassland (Medium Sensitivity)

Scale: 1:30 000
 Projection: LO19
 Map Ref: L3 Amendment Layout



Source: Esri, Maxar, GeoEye, Earthstar Geographics, CNES/Airbus DS, USDA, USGS, AeroGRID, IGN, and the GIS User Community