

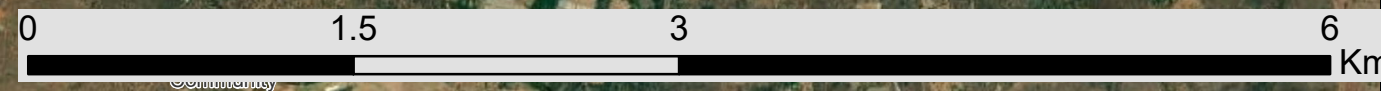
# Buffelspoort Solar PV Energy Facility North West Province

## Locality Map

### Legend

- Town
- ▲ ATKV- Buffelspoort
- Eskom Substation
- Existing Power Line
- National Route
- Main Road
- Regional Road
- Perennial River
- Project Site
- Development Area
- Grid Corridor (200m-300m)
- Onsite Facility Substation

Scale: 1:30 000  
 Projection: GCS\_WGS\_1984  
 Map Ref: Buffelspoort Locality Map



# Buffelspoort Solar PV Energy Facility North West Province

## Development Area & Sensitivity Map

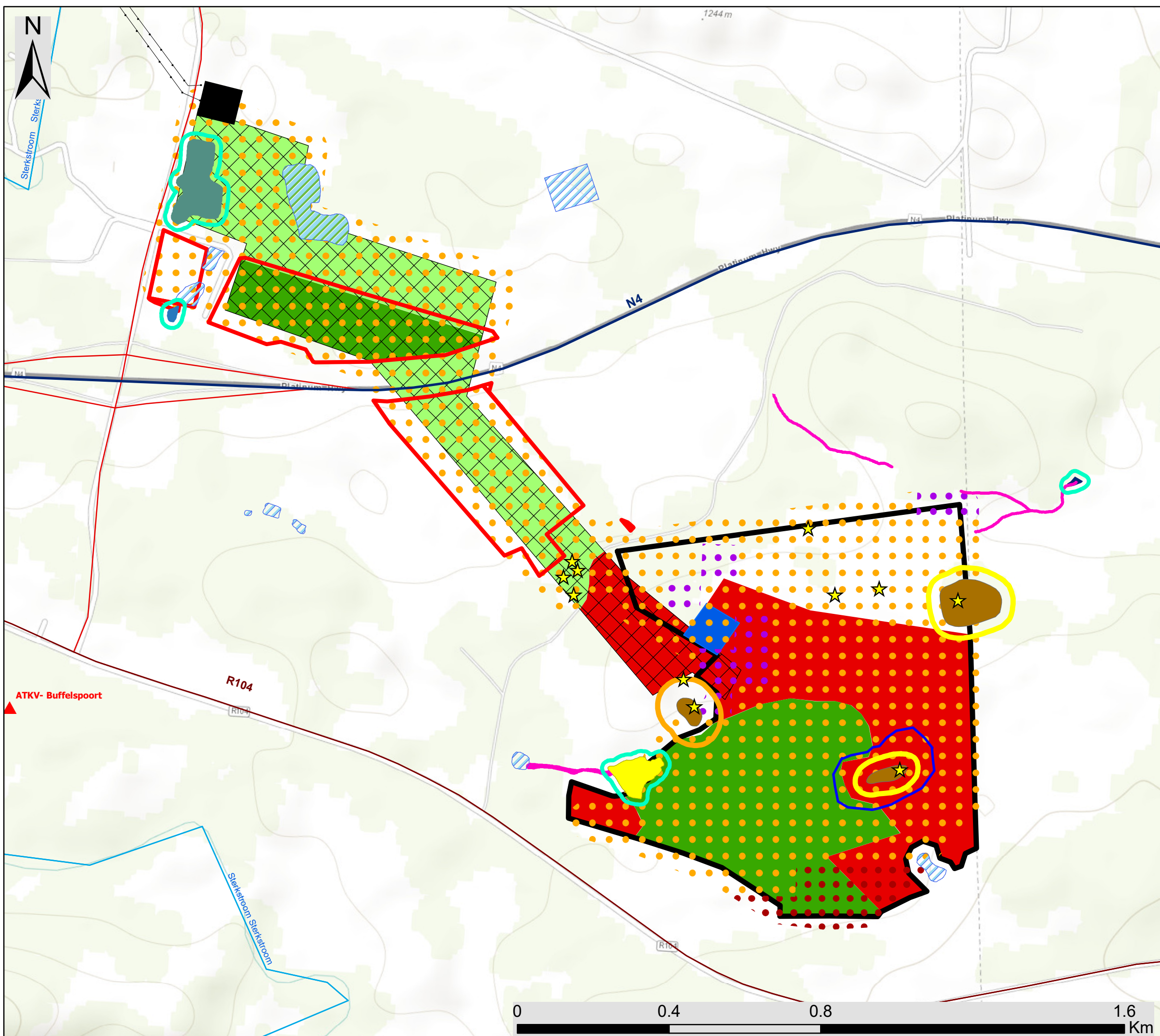
### Legend

- ATKV- Buffelspoort
- Eskom Substation
- Existing Power Line
- National Route
- Main Road
- Regional Road
- Perennial River
- Development Area
- Grid Corridor (200m-300m)
- Onsite Facility Substation
- Environmental Sensitivities**
- Ecological Sensitivities**
- Degraded Bushveld (High Ecological Sensitivity)
- Wetlands (Medium Ecological Sensitivity)
- Disturbed Bushveld (Low Ecological Sensitivity)
- Transformed (Very Low Ecological Sensitivity)
- Rocky Outcrops (35m Ridge Buffer)
- Heritage Features**
- Heritage Features
- Heritage Features Delineation
- Heritage Feature Buffer (30m Buffer)
- Heritage Feature Buffer (50m Buffer)
- Soil Sensitivity**
- Field Crop Boundary
- High Land Capability
- Medium Land Capability
- Low Land Capability
- Wetland Sensitivities**
- Wetland Buffer (15m)
- Artificial Wetland (Very Low Sensitivity)
- Dams (Very Low Sensitivity)
- Drainage Features (Moderate High Sensitivity)
- HGM 1- Depression (Moderate High Sensitivity)
- HGM 2- Depression (Moderate High Sensitivity)
- HGM 3- Hillslope Seep (Moderate Low Sensitivity)
- HGM 4- Unchannelled Valley Bottom (Medium Sensitivity)

Scale: 1:30 000

Projection: GCS\_WGS\_1984







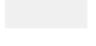





Map Ref: Buffelspoort Sensitivity Map

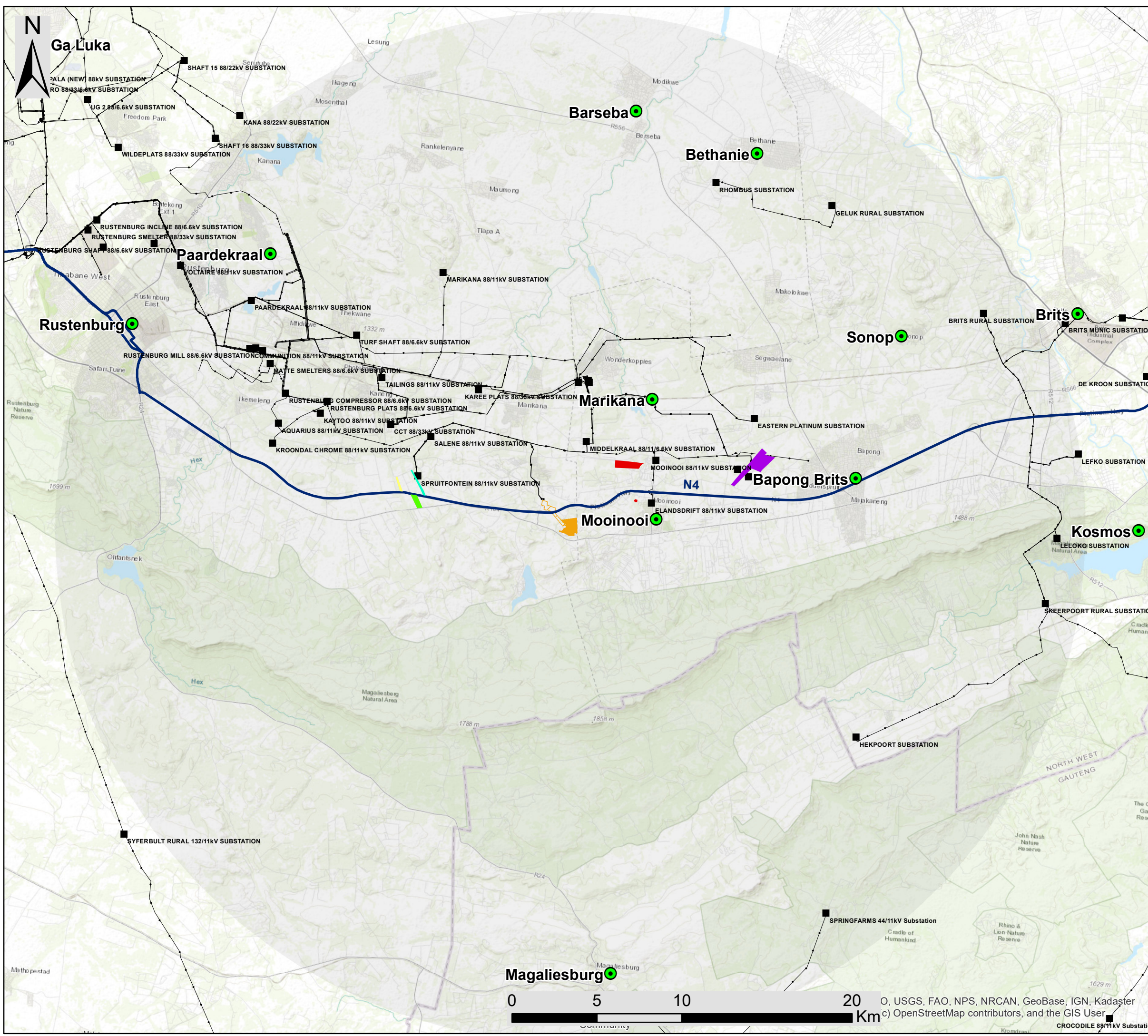


# Buffelspoort Solar PV Energy Facility North West Province

Cumulative Map

## Legend

-  Town
  -  Eskom Substation
  -  Existing Power Line
  -  National Route
  -  Development Area
  -  Grid Corridor (200m-300m)
  -  DFFE (30km Buffer)
- ### Other Known Solar PV Projects
-  RustMo 1 Pv Plant
  -  Lonmin Western Platinum Limited PV Plant
  -  Avelar Solar Panel Project
  -  RustMo 3 Pv Plant
  -  RustMo 4 Pv Plant



Scale: 1:30 000  
 Projection: GCS\_WGS\_1984  
 Map Ref: Buffelspoort Cumulative Map

