



Buffelspoort Solar PV Energy Facility North West Province Locality Map

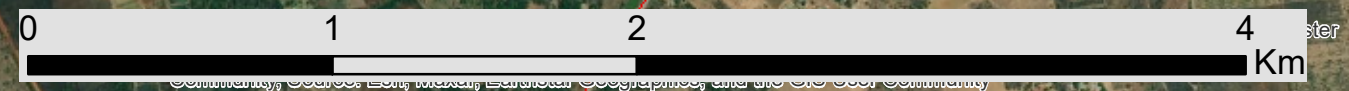
Legend

- Town
- ▲ ATKV- Buffelspoort
- Eskom Substation
- Existing Power Line
- National Route
- Regional Road
- Main Road
- Perennial River

Facility Layout and Grid Connection Corridor

- Onsite Facility Substation
- Project Site
- Development Area
- Grid Corridor (200 m - 300 m)

Scale: 1:30 000
 Projection: GCS_WGS_1984
 Map Ref: Buffelspoort Locality M€



© Savannah Environmental, 2014. All rights reserved. This map is a representation of the data provided and is not a guarantee of accuracy. The data is derived from various sources and is subject to change without notice.

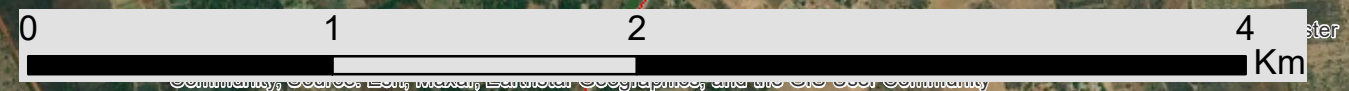


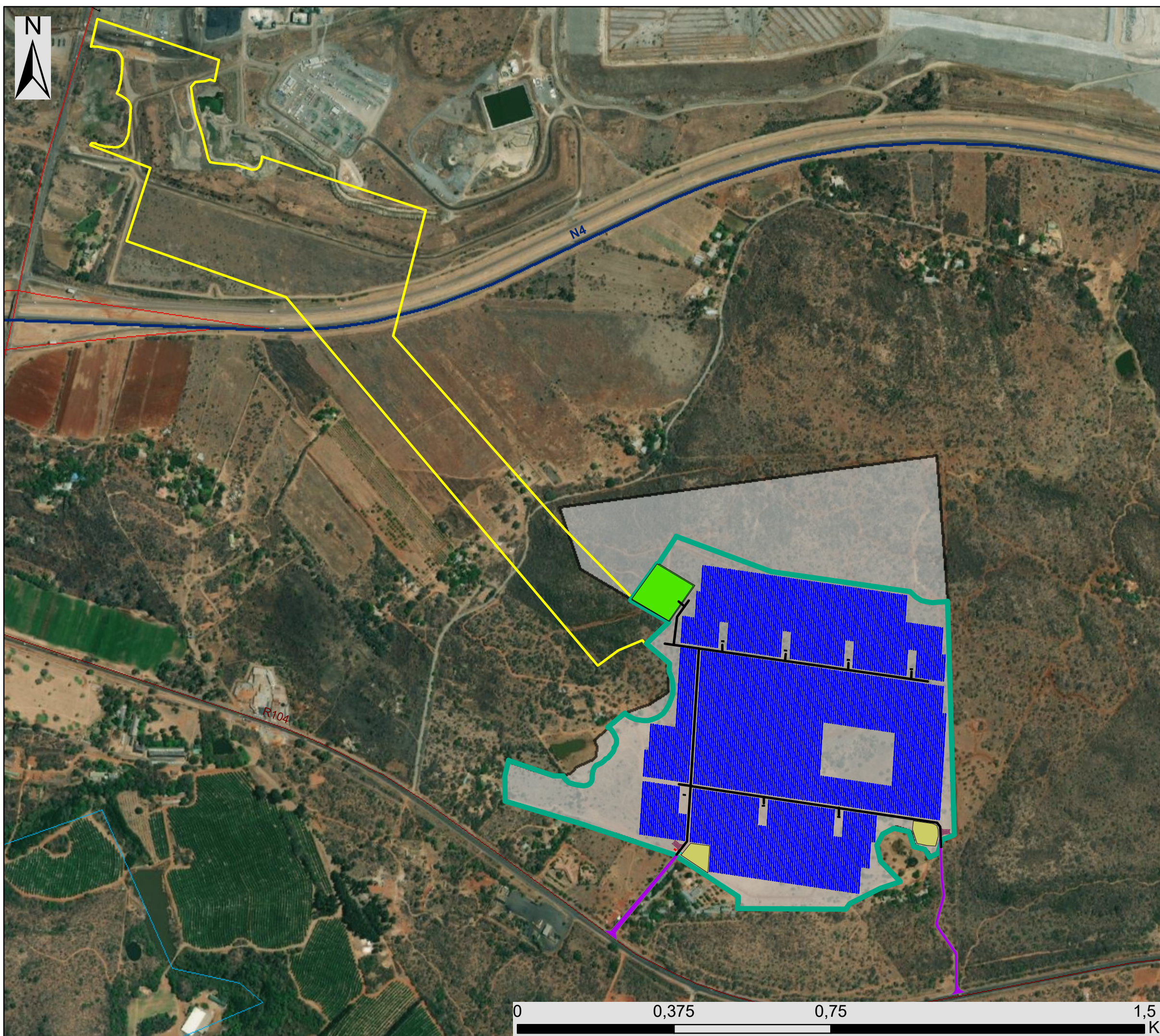
Buffelspoort Solar PV Energy Facility North West Province Locality Map

Legend

- Town
 - ▲ ATKV- Buffelspoort
 - Eskom Substation
 - Existing Power Line
 - National Route
 - Regional Road
 - Main Road
 - Perennial River
- ### Facility Layout and Grid Connection Corridor
- Onsite Facility Substation
 - Project Site
 - Development Area
 - Development Footprint
 - Grid Corridor (200 m - 300 m)

Scale: 1:30 000
 Projection: GCS_WGS_1984
 Map Ref: Buffelspoort Locality Map





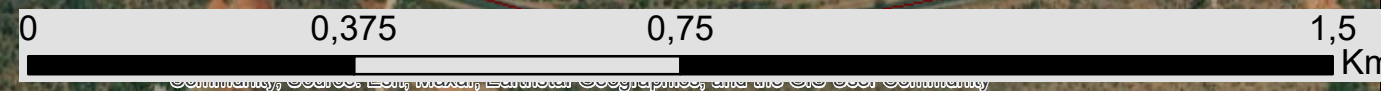
Buffelspoort Solar PV Energy Facility North West Province

Layout Map

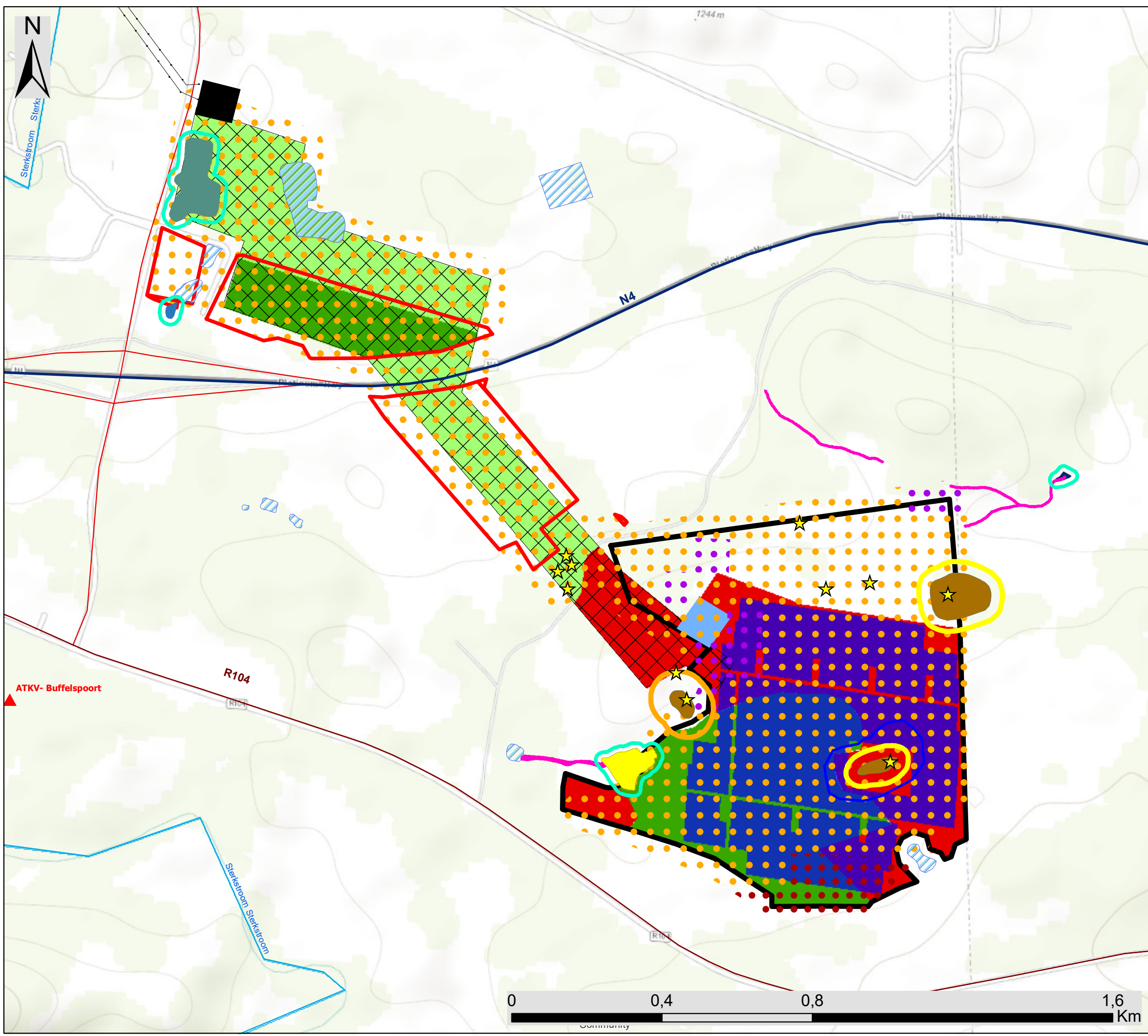
Legend

- Eskom Substation
- Existing Power Line
- National Route
- Regional Road
- Main Road
- Perennial River
- Facility Layout and Grid Connection Corridor**
- Project Site
- Development Area
- Development Footprint
- Internal Access Roads (3.5 m)
- Access Road
- Water tank
- Warehouse
- Parking Lots
- Compound and Storage Area
- Production Substation
- Onsite Facility Substation
- Grid Corridor (200 m - 300 m)

Scale: 1:30 000
 Projection: GCS_WGS_1984
 Map Ref: Buffelspoort Locality Mε



© Savannah Environmental, 2024. All rights reserved. This map is a technical drawing and should not be used for any other purpose without the written consent of Savannah Environmental.



Buffelspoort Solar PV Energy Facility North West Province

- Legend** Sensitivity Map
- ▲ ATKV- Buffelspoort
 - Eskom Substation
 - Existing Power Line
 - National Route
 - Main Road
 - Regional Road
 - Perennial River
- Facility Layout and Grid Connection Corridor**
- Development Footprint
 - ▭ Development Area
 - ▨ Grid Corridor (200m-300m)
 - Onsite Facility Substation
- Ecological Sensitivities**
- Degraded Bushveld (High Ecological Sensitivity)
 - Wetlands (Medium Ecological Sensitivity)
 - Disturbed Bushveld (Low Ecological Sensitivity)
 - Transformed (Very Low Ecological Sensitivity)
 - Rocky Outcrops (35m Ridge Buffer)
- Heritage Features**
- ★ Heritage Features
 - Heritage Features Delineation
 - Heritage Feature Buffer (30m Buffer)
 - Heritage Feature Buffer (50m Buffer)
- Soil Sensitivity**
- Field Crop Boundary
 - High Land Capability
 - Medium Land Capability
 - Low Land Capability
- Wetland Sensitivities**
- Wetland Buffer (15m)
 - Artificial Wetland (Very Low Sensitivity)
 - Dams (Very Low Sensitivity)
 - Drainage Features (Moderate High Sensitivity)
 - HGM 1- Depression (Moderate High Sensitivity)
 - HGM 2- Depression (Moderate High Sensitivity)
 - HGM 3- Hillslope Seep (Moderate Low Sensitivity)
 - HGM 4- Unchannelled Valley Bottom (Medium Sensitivity)

Scale: 1:30 000
 Projection: GCS_WGS_1984
 Map Ref: Buffelspoort Sensitivity Map

