

REVIEW	DATE	MODIFIES TITLE N°
DESCRIPTION:		
DESCRIPTION:		
DESCRIPTION:		

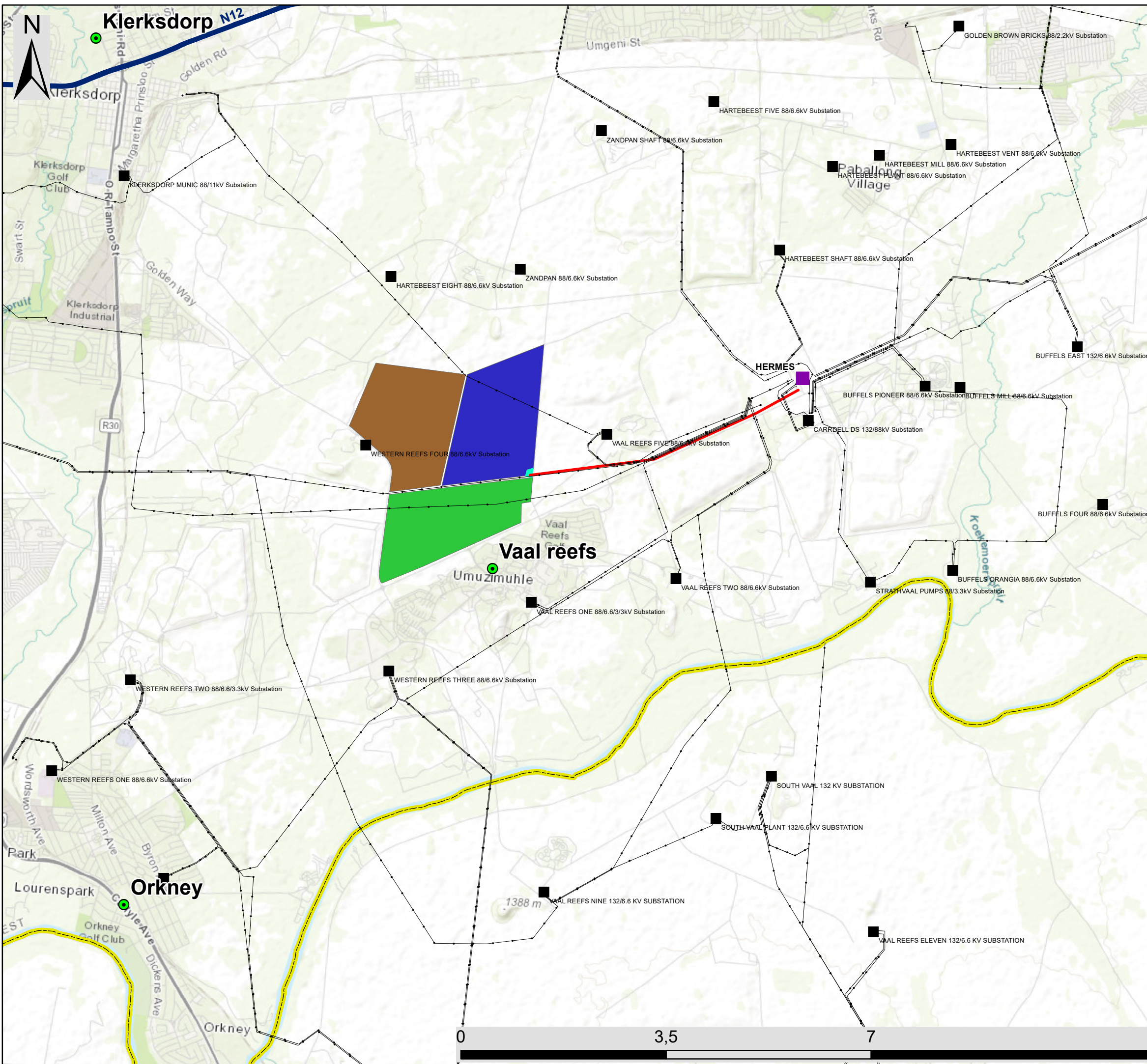
VAAL RIVER SOLAR 2 PV FACILITY

SITE LOCATION:	
VAAL RIVER	
STATUS: PRELIMINARY LAYOUT	
TITLE: 11.002 KVS1-PDES-LYO-1	
DATE: 18/05/2012	ESCALE: 1:8.000 <small>ORIGINAL FORMAT A-3</small>

LAYOUT

LEGEND (Vaal river solar 2 PV Facility)	
	POWERLINE
	ONE AXIS TRACKING SYSTEM
	SUBSTATION
	TRANSFORMER AND INVERTERS CENTER
	FENCE
	PLOT LIMITS
	WATER PIPELINE
	BATTERY ENERGY STORAGE FACILITY (2ha)





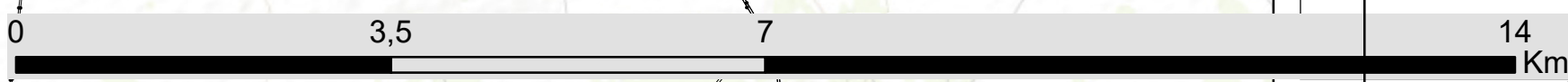
Vaal River Solar PV Facilities, Substation and 132kV power line projects near Orkney in the North West Province

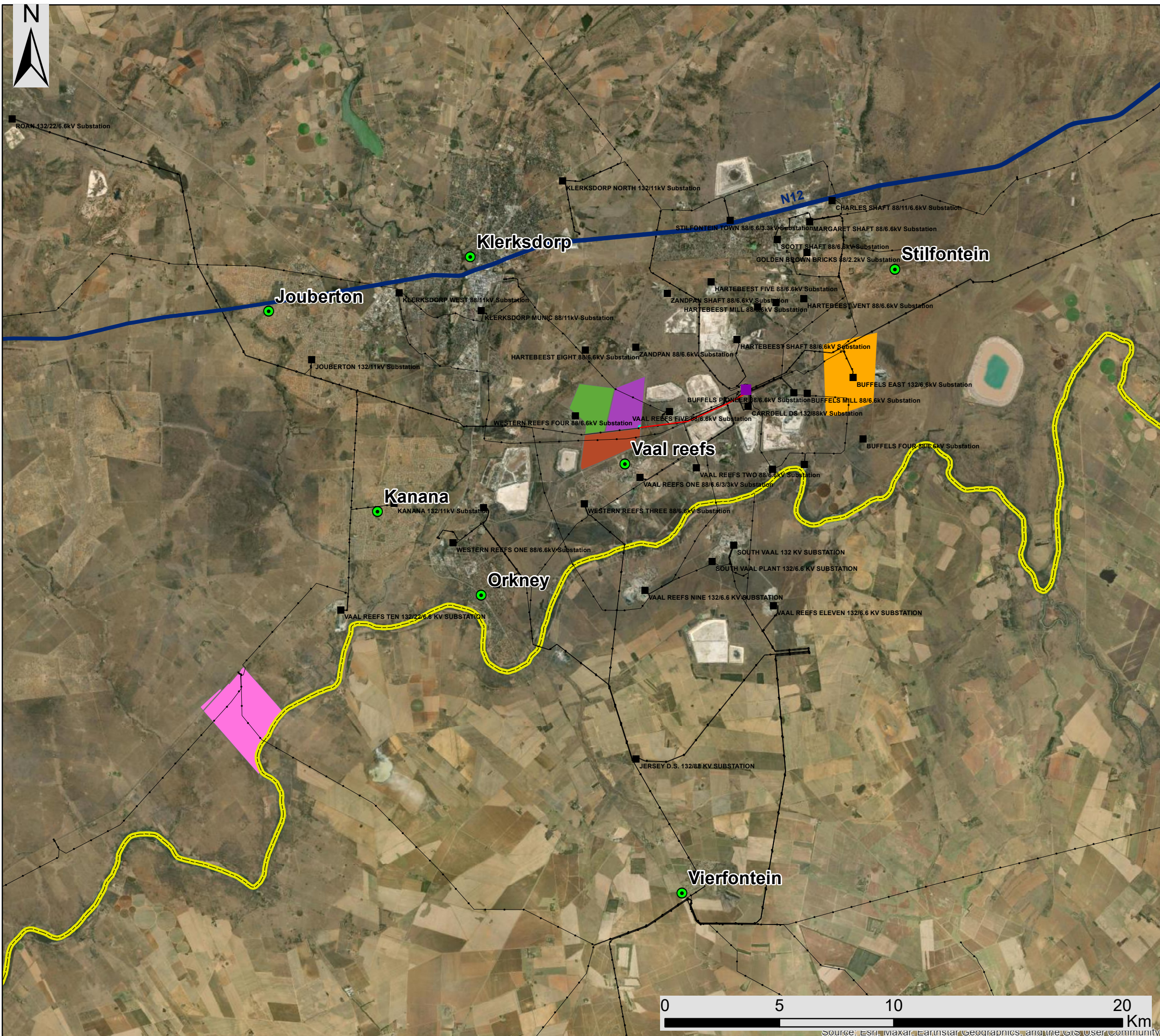
Locality Map

Legend

- Town
- Hermes Eskom Substation
- Eskom Substation
- Existing Power Line
- National Route
- Provincial Boundary
- Vaal River Solar PV Projects**
- 132kV power line for Vaal River Solar PV Facilities
- Substation
- Vaal River Solar 1 PV Facility
- Vaal River Solar 2 PV Facility
- Vaal River Solar 3 PV Facility

Scale: 1:200 000
 Projection: GCS_WGS_1984
 Map Ref: Vaal River Solar PV Facility





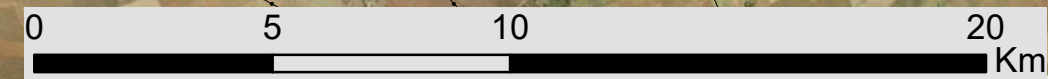
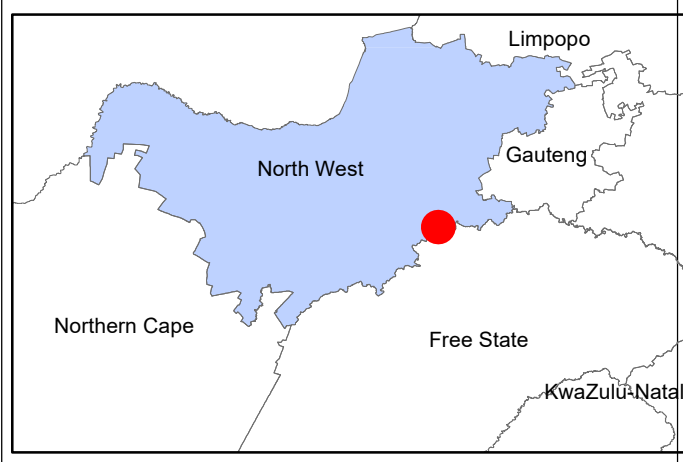
Vaal River Solar PV Facilities, Substation and 132kV power line projects near Orkney in the North West Province

Cumulative Map

Legend

- Town
 - Eskom Substation
 - Hermes Eskom Substation
 - Existing Power Line
 - National Route
 - Provincial Boundary
- Properties Associated With Renewable Energy Facilities**
- Buffels Solar PV1 Energy Facility
 - Orkney PV Solar Energy Facility
- Vaal River Solar PV Projects**
- 132kV power line for Vaal River Solar PV Facilities
 - Substation
 - Vaal River Solar 1 PV Facility
 - Vaal River Solar 2 PV Facility
 - Vaal River Solar 3 PV Facility

Scale: 1:200 000
 Projection: GCS_WGS_1984
 Map Ref: Vaal River Solar PV Facility



Source: Esri, Maxar, Earthstar Geographics, and the GIS User Community

Vaal River Vaalkop Sites

Ecological Sensitivity Map

Legend

- National Road
 - Regional Road
 - Secondary Road
 - Railway Line
 - Perennial River
 - Non-perennial River
 - Existing power Line
 - Distribution Substation
 - Transmission Substation
 - Proposed substation
 - Power line - Vaalkop to Hermes
 - Project Boundary
- Ecological Sensitivity**
- Medium
 - Low

