

APPENDIX C7
MEETING NOTES



DRAFT EIA

**ENVIRONMENTAL IMPACT ASSESSMENT AND
PUBLIC PARTICIPATION PROCESSES
FOR THE
PROPOSED DEVELOPMENT OF THE 75-100MW LIMESTONE PV1
AND PV 2 SOLAR PHOTOVOLTAIC (PV) ENERGY FACILITY AND
ASSOCIATED INFRASTRUCTURE NEAR DANIELSKUIL, NORTHERN
CAPE PROVINCE**

**MEETING WITH STAKEHOLDERS
HELD ON MONDAY, 19 JUNE 2023 AT 11:00am
VENUE: MICROSOFT TEAMS, VIRTUAL MEETING**

Notes for the Record prepared by:

Molatela Ledwaba

Savannah Environmental (Pty) Ltd

E-mail: publicprocess@savannahsa.com

Please address any comments to Savannah Environmental at the above address

MEETING ATTENDEES

Name	Company	Designation
Molatela Ledwaba	Savannah Environmental	Public Participation and Social Consultant
Nkhensani Masondo		Environmental Assessment Practitioner
Matthew Ellero		Environmental Assessment Practitioner
Matthew Muldoon	AGV Project (Pty) Ltd	Environmental Project Manager
FC Koetze		Project Development Lead
Johan du Plessis	Landowner	Grootpan/ Dikbos Farm
Arno Opperman	Landowner	Langverwag Farm

WELCOME AND INTRODUCTION

Molatela Ledwaba welcomed the attendees at the Meeting for the Limestone PV1 and PV2 Solar Energy Facilities and Associated Infrastructure.

The Agenda was provided and presented by **Molatela Ledwaba**

APOLOGIES

No apologies were rendered.

PURPOSE OF THE MEETING

Molatela Ledwaba indicated the purpose of the meeting as follows:

- » Provide an overview of the Limestone PV Facilities (x2 projects) and Grid connections (x3 Projects).
- » Provide summary of the EIA & Public Participation Processes being undertaken
- » Present a summary of the key environmental findings as documented in the respective EIA and BA Reports
- » Provide stakeholders the opportunity to seek clarity regarding the projects and their respective environmental studies, as well as the opportunity to provide valuable input into/to inform the EIA process.
- » Obtain and record comments for inclusion in the final submissions to CA.

Project Overview

Matthew Ellero provided an overview of the proposed projects located on portion 4 of Farm Engeland 300 within the Northern Cape Province, projects components, cumulative impact as well as a summary of the Environmental Impacts Identified. **Matthew Ellero** presented the following key information:

- » A total of Five separate projects are being proposed. This includes 2 Solar Energy facilities. These will generate electricity through PV panels. These facilities are to be called the Limestone PV1 and Limestone PV2 facility. Also, to be developed separately are the three-grid connection infrastructure that will connect the facility to the national grid.

» Environmental Impact Assessment, Basic Assessment and Public Participation Process.

A copy of the virtual participants' attendance is attached as **Appendix A** and the presentation is attached as **Appendix B** to the meeting notes.

DISCUSSION SESSION

Johanne	Question/ Comment	Response
Johan du Plessis	Thank you for the presentation, but could you also send us an EMPr of every project?	MM -Molatela will send you a copy
Arno Opperman	Thank you for the presentation, but could you also send us an EMPr of every project?	MM -Molatela will send you a copy

WAY FORWARD AND CLOSURE

Molatela Ledwaba reminded all the attendees that the review period for the draft EIA will end on the 19 June 2023 and once the reports have been updated with written comments received during the 30-day review and comment period, the final EIA reports will be submitted to the DFFE for approval. Thereafter, the EIA phase will commence. Further project information will be relayed accordingly.

Molatela Ledwaba asked whether there were any other environmental-related concerns or comments. It was noted by all attendees that no further comments needed to be raised at this time.

She thanked all the attendees for making time available to attend the focus group meeting and their input into the process.

The Meeting was closed at 11:48am

LIST OF ABBREVIATIONS AND ACRONYMS

AGV	African Green Venture	EIA	Environmental Impact Assessment
CA	Competent Authority	PV	Photovoltaic

APPENDIX A

Molatela Ledwaba

Subject: Invitation to Virtual Public Meeting for Limestone PV1 and PV2 - EIA phase
Location: Microsoft Teams Meeting

Start: Mon 6/19/2023 11:00 AM
End: Mon 6/19/2023 12:30 PM

Recurrence: (none)

Meeting Status: Meeting organizer

Organizer: Molatela Ledwaba
Required Attendees: Molatela Ledwaba; Matthew Ellero; mm.klm@kgatelopele.gov.za; mmsec@kgatelopele.gov.za; speakerklm@kgatelopele.gov.za; ward2@kgatelopele.gov.za; ward4@kgatelopele.gov.za; procttech@kgatelopele.gov.za; idp.led@kgatelopele.gov.za; deptech@kgatelopele.gov.za; haaironel@gmail.com; Matthew Muldoon; 'FC Knoetze'; PJ Kilian Private Company; wadadt@gmail.com; nonkululeko.veleti@yahoo.co.za; Janneman.jordaan@gmail.com; ckyork@vodamail.co.za; Fourie.mg@gmail.com; h.engela@absamail.co.za; aopperman@legacymining.co.za; wilfredg@willtechnic.co.za
Optional Attendees: Nkhensani Masondo; Jo-Anne Thomas; Johan du Plessis

DEVELOPMENT OF LIMESTONE PV1 AND PV2 SOLAR PV FACILITIES ASSOCIATED INFRASTRUCTURE AND ELECTRICAL GRID INFRASTRUCTURE LOCATED NEAR DANIELSKUIL (DFFE Reference No.:

- **LIMESTONE PV2 Solar PV: 14/12/16/3/3/2/2269 and)**
- **LIMESTONE PV2 Solar PV: 14/12/16/3/3/2/2270**

Dear Interested & Affected Party,

AGV Projects (Pty) Ltd proposes the development of a cluster of renewable energy facilities and associated infrastructure near the town of Danielskuil in the Kgatelopele Local Municipality and the ZF Mgcahu District Municipality, Northern Cape Province. The cluster of renewable energy facilities includes two Solar PV Energy Facilities with 150MW Maximum Export Capacity each (Limestone PV1 and Limestone PV2). Each solar energy facility will be constructed as a separate stand-alone project and therefore, separate Scoping and Environmental Impact Assessment (S&EIA) processes are being undertaken for each project.

The two (2) solar photovoltaic (PV) energy facilities are to be known as:

- » Limestone PV1 Solar facility
- » Limestone PV2 Solar facility

Savannah Environmental is looking forward to your attendance at this virtual PM where we will be presenting the following:

- brief background to the proposed projects.
- an overview of the Environmental Impact Assessment process for the Limestone PV1 and PV2 projects.
- a summary of the key environmental findings as documented in the Environmental Impact Assessment Reports (EIARs);
- an opportunity for you to seek clarity and raise any additional comments and/or concerns; and
- to record comments raised at the PM.

The EIAs for the above-mentioned two (2) projects have been made available for your review and written comments for a 30-day review and comment period from **Thursday, 18 May 2023** until **Monday, 19 June 2023**. The EIAs and can be downloaded from our website <https://savannahsa.com/public-documents/energy-generation/limestone-solar-pv/>

Please do not hesitate to contact us should you require any additional information.

Kind regards,



t: +27 (0) 11 656 3237
f: +27 (0) 86 684 0547

Molatela Ledwaba

Public Participation and Social
Consultant

e: molatela@savannahsa.com

SAWEA Award for Leading Environmental Consultant on Wind Projects in 2013 & 2015

Microsoft Teams meeting

Join on your computer, mobile app or room device

[Click here to join the meeting](#)

Meeting ID: 395 420 839 493

Passcode: xqCS2b

[Download Teams](#) | [Join on the web](#)

[Learn More](#) | [Meeting options](#)

APPENDIX B

LIMESTONE PV1, LIMESTONE PV2 FACILITIES AND LIMESTONE GRID CONNECTION INFRASTRUCTURE, NORTHERN CAPE PROVINCE

PUBLIC PARTICIPATION MEETINGS

JUNE 2023



1

MEETING AGENDA

- Welcome and introduction
- Overview of the projects, including location, project infrastructure and associated infrastructure
- Discussion on Environmental Assessment Processes and Public Participation to be undertaken
- Discussion on results of the site sensitivity and impacts
- Way forward
- Discussions and Questions



2

MEETING CONDUCT

- Recording of the meeting
- Please stay on mute during the presentation
- Register attendance on chat function (name, surname, and affiliation)
- Equal opportunity
- Questions and comments can be submitted on the chat function during the presentation – team will respond after presentation
- Please hold all verbal questions until after the presentation
- Please raise your hand (virtual function) to ask a question and state your name



3

PURPOSE OF THE MEETING

- Provide an overview of the **Limestone PV Facilities (x2 projects) and grid connections (x3 Projects)**
- Provide summary of the **EIA & Public Participation Processes** being undertaken
- Present a summary of the key environmental findings as documented in the respective **EIA and BA Reports**
- Provide stakeholders the opportunity to seek clarity regarding the projects and their respective environmental studies, as well as the opportunity to provide valuable input into/to inform the EIA process
- Obtain and record comments for inclusion in the final submissions to CAs



4

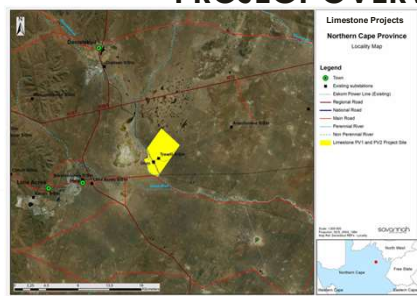
PROJECT OVERVIEW

(Matthew Ellero)



5

PROJECT OVERVIEW




Limestone Projects
Northern Cape Province
Locality Map

Legend

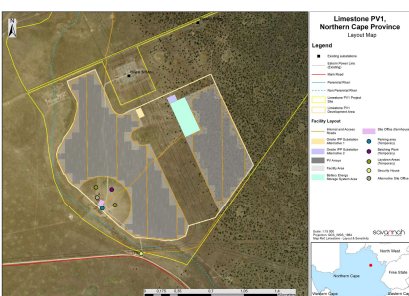
- Town
- Existing Substations
- Existing Power Line Overlay
- Regional Road
- National Road
- District Road
- Regional Road
- High Potential Area
- Limestone PV1 and PV2 Project Sites

- Five projects:
 - 2x Solar Energy Facilities, and
 - 3x associated grid connection infrastructure
- Located 16km south-east of the town of Danielskuil and 10km east of Lime Acres, within the Kgatelopele Local Municipality and the ZF Mgcawu District Municipality in the Northern Cape Province
- Projects situated on a single farm portion, namely, Portion 4 of the Farm Engeland 300



6

PROJECT COMPONENTS



Limestone PV1
Northern Cape Province
Locality Map

Legend


- Existing Substations
- Existing Power Line Overlay
- Regional Road
- National Road
- District Road
- Regional Road
- High Potential Area
- Limestone PV1 and PV2 Project Sites

Facility Level

- PV Modules
- 33kV Onsite Substation
- BESS
- Site Offices and Maintenance Buildings
- Laydown/Staging Area
- Access Roads

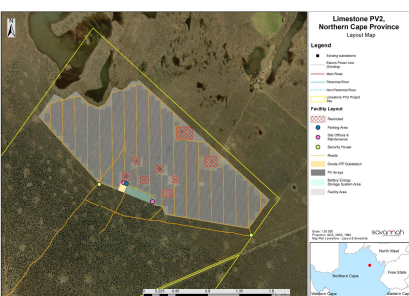
The Limestone PV1 and Limestone PV2 infrastructure will both have a maximum export capacity of 150MW and include the following infrastructure:

- PV modules
- 33kV cabling between the project components and the facility substation
- 33/132kV onsite facility substation (two alternatives)
- Battery Energy Storage System (BESS)
- Site offices and maintenance buildings, including workshop areas for maintenance and storage as well as parking for staff and visitors
- Laydown/staging area on-site in front of mounting structures during installation. Temporary store area close to site entrance
- Access roads (up to 6m wide) and internal distribution roads (up to 5m wide)



7

PROJECT COMPONENTS



Limestone PV2
Northern Cape Province
Locality Map

Legend


- Existing Substations
- Existing Power Line Overlay
- Regional Road
- National Road
- District Road
- Regional Road
- High Potential Area
- Limestone PV1 and PV2 Project Sites

Facility Level

- PV Modules
- 33kV Onsite Substation
- BESS
- Site Offices and Maintenance Buildings
- Laydown/Staging Area
- Access Roads

The Limestone PV2 will comprise of the same infrastructure as the Limestone PV1 facilities, with a few differences:

- The facility area will be used for laydown areas with additional laydown area being provided by Limestone PV1 facility
- A single substation location is being proposed



8

PROJECT COMPONENTS

The Eskom Grid Connection Infrastructure Basic Assessment will include the following components:

- A 132kV Eskom Switching Station (two alternatives considered).
- 132kV overhead powerlines with a servitude of 36m, that will connect the Eskom Switching Station to the Olien Substation
 - Alternative 1: length of up to 0.25km
 - Alternative 2: length of up to 0.35km
- Access roads, width up to 6m, to the Eskom Switching Substation
 - Alternative 1: length of up to 2.1km
 - Alternative 2: length of up to 2.5km
- Access roads, width up to 6m, to the the Olien MTS
 - Alternative 1: length of up to 3.0km
 - Alternative 2: length of up to 2.6km

savannah

9

PROJECT COMPONENTS

The Limestone PV2 Grid Connection Infrastructure will include the following components:

- 132kV overhead powerlines, with a servitude of 36m, that will connect the Limestone PV2 facility to the Limestone PV1 onsite substation:
 - Alternative 1: length of up to 3.9km
 - Alternative 2: length of up to 3.55km
- A 22kV existing Eskom line, with a servitude of 18m, that needs to be rerouted:
 - Alternative 1: length of up to 3.15km
 - Alternative 2: length of up to 4.30km

savannah

10

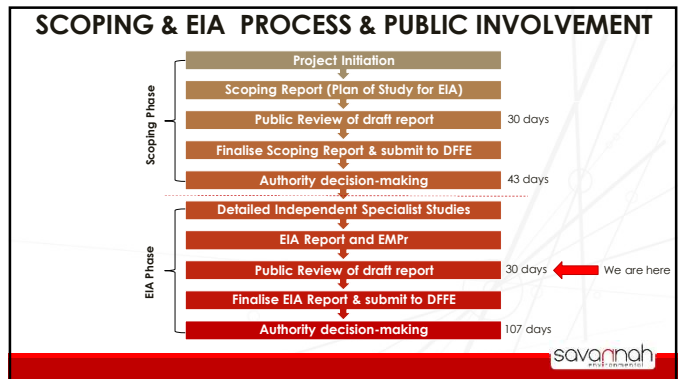
PROJECT COMPONENTS

The BESS Infrastructure Basic Assessment will include the following components:

- Overhead power lines
- Battery Energy Storage System
- Substation
- Laydown area
- Site Office
- Access Roads

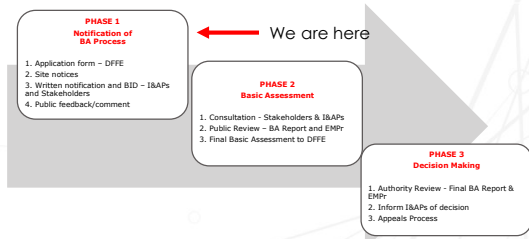
savannah

11



12

BA PROCESS & PUBLIC INVOLVEMENT

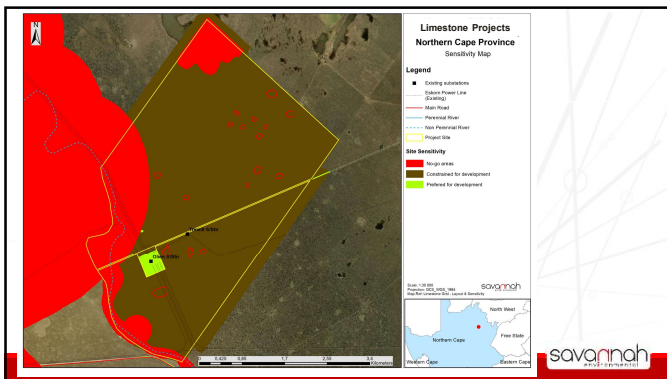


13

SPECIALIST STUDIES

Specialist	Area of Expertise
Marnus Erasmus of The Biodiversity Company	Terrestrial ecology and freshwater
Ryno Kemp of The Biodiversity Company	Avifauna
Matthew Mamera of The Biodiversity Company	Soils and agricultural potential
Jenna Lavin of Cedar Tower Solutions (CTS)	Heritage (incl. Archaeology and Palaeontology)
Laurens du Plessis of LOGIS	Visual
Malatela Ledwaba of Savannah Environmental (peer review by Tony Barbour)	Social
Iris Wink of iWink	Traffic

14



15

ENVIRONMENTAL IMPACTS IDENTIFIED (all projects)

Impacts	Identified Impacts
Impacts on Terrestrial ecology and freshwater	<ul style="list-style-type: none"> Loss of vegetation within development footprint Introduction and spread of alien and invasive species, especially plants Destruction of protected plant species Displacement of faunal community due to habitat loss, direct mortalities and disturbance Continued fragmentation and degradation of habitats and ecosystems
Impacts on Avifauna	<ul style="list-style-type: none"> Habitat destruction within the direct project footprint Destruction, degradation, and fragmentation of surrounding habitats Displacement of avifauna community (including species of conservation concern) due to noise pollution Collisions with project infrastructure Direct mortality from vegetation clearing, increased vehicle traffic and poaching, including the collection of eggs
Impacts on Agricultural Potential and Soils	<ul style="list-style-type: none"> Minimal due to moderate to low sensitivity of site
Visual Impacts	<ul style="list-style-type: none"> Visibility of development to observers residing in rural homesteads and farmsteads Observers traveling along the arterial and secondary roads Potential visual impact of operational, safety and security lighting of the facility at night Potential visual impact of solar glint and glare as a visual distraction and possible rail/road travel hazard

16

ENVIRONMENTAL IMPACTS IDENTIFIED (all projects)	
Impacts	Identified Impacts
Visual Impacts	<ul style="list-style-type: none"> • Visibility of development to observers residing in rural homesteads and farmsteads • Observers traveling along the arterial and secondary roads • Potential visual impact of operational, safety and security lighting of the facility at night • Potential visual impact of solar glint and glare as a visual distraction and possible rail/road travel hazard
Impacts on Heritage (Cultural Landscape, Archaeology and Palaeontology)	<ul style="list-style-type: none"> • Direct impact to archaeological heritage of scientific significance. • Direct impact to palaeontological heritage of scientific significance. • Direct and indirect impact to significant cultural landscapes and cultural landscape elements.
Social Impacts	<ul style="list-style-type: none"> • The creation employment opportunities and skills development • The potential impact posed to farmers and farm workers due to the presence of construction workers on site • Potential impacts associated with the influx of job seekers • Potential noise, dust, and safety impacts associated with construction-related activity movement and traffic movement to and from the site • Increased risk of potential veed fires • Assessment of potential impacts related to the presence of construction workers on local communities • Development of infrastructure for the generation of renewable energy • Visual impact and impact on sense of place • Loss of income and employment
Traffic Impacts	<ul style="list-style-type: none"> • Slight increase in trips for permanent and periodically maintenance staff • Temporary increase of development trips on the external road network; increase in construction related noise and dust pollution

17

CUMULATIVE IMPACTS

- Impacts will be similar to those when infrastructure considered in isolation
- Mostly moderate impact significance
- High positive impact significance for Social
- High visual impact significance, however considered acceptable due to location of infrastructure and similar projects in the area.

18

CONCLUSION AND RECOMMENDATIONS

PV Facilities:

- Projects are well aligned with the national, provincial and local policy framework
- From a biodiversity perspective, location of infrastructure considered acceptable
- Optimised layout proposed ensures that all no-go areas identified are avoided and recommended buffer areas are honoured
- Where impacts could not be avoided, appropriate mitigation has been proposed to minimise impacts

19

CONCLUSION AND RECOMMENDATIONS

Grid Connection Infrastructure:

- Projects are well aligned with the national, provincial and local policy framework
- Layouts being optimized to ensure that all no-go areas identified are avoided and recommended buffer areas are honoured
- Where impacts could not be avoided, appropriate mitigation will be proposed to minimise impacts

20

WAY FORWARD AND CLOSURE (Molatela Ledwaba)

21

WAY FORWARD

- EIA Report review period: **18 May 2023 – 19 June 2023** (can be downloaded from the Savannah Environmental website <https://savannahsa.com/public-documents/energy-generation/>)
- Final EIA Report to be submitted to DFFE
- Draft BA Report to be submitted to Northern Cape Department of Agriculture, Environmental Affairs, Rural Development and Land Reform (DAEARD&LR) and made available for public review
- Our Public Participation team is available to answer any questions on the development and register you as an I&AP so that you can receive important project information as it becomes available.

22

WHO TO CONTACT FOR FURTHER INFORMATION

Savannah Environmental (Pty) Ltd
Molatela Ledwaba
Email: publicprocess@savannahsa.com
PO Box 148, Sunninghill, 2157
Tel: 011 656 3237
Mobile: 060 978 8396 (*including "please call me"*)
Fax: 086 684 0547
www.savannahSA.com

23

DISCUSSION

savannah
PROJECT MANAGEMENT

24

SCOPING PHASE

Meeting Notes with Adjacent Land Owners

**ENVIRONMENTAL IMPACT ASSESSMENT AND
PUBLIC PARTICIPATION PROCESSES
FOR THE
PROPOSED DEVELOPMENT OF THE 75-100MW LIMESTONE PV1
AND PV 2 SOLAR PHOTOVOLTAIC (PV) ENERGY FACILITY AND
ASSOCIATED INFRASTRUCTURE NEAR DANIELSKUIL, NORTHERN
CAPE PROVINCE**

**INTRODUCTION MEETING WITH ADJACENT LANDOWNERS
HELD ON WEDNESDAY, 09 NOVEMBER 2022
VENUE: ADJACENT AND AFFECTED FARM OWNERS**

Notes for the Record prepared by:

Molatela Ledwaba

Savannah Environmental (Pty) Ltd

E-mail: publicprocess@savannahsa.com

Please address any comments to Savannah Environmental at the above address

PROPOSED DEVELOPMENT OF THE 75-100MW LIMESTONE PV 1 AND PV2 PHOTOVOLTAIC (PV) ENERGY FACILITY AND ASSOCIATED INFRASTRUCTURE NEAR DANIELSKUIL, NORTHERN CAPE PROVINCE

**ATTENDANCE REGISTER
(Face to Face meeting)**

Name	Farm Name	Designation
Mrs Kokie C York	Olienspruit	Farm Owner
Molatela Ledwaba	Savannah Environmental	Public Participation Consultant
Nkhensani Masondo	Savannah Environmental	Environmental Assessment Practitioner

WELCOME AND INTRODUCTION

Molatela Ledwaba welcomed Mrs C York and presented the purpose of the meeting.

PURPOSE OF THE MEETING

Molatela Ledwaba indicated the purpose of the meeting as follows:

- » An introduction meeting to inform the adjacent landowner about the proposed development of the 75-100MW Limestone PV 1 and PV 2 Solar PV energy facility and associated infrastructure.
- » Provide stakeholders & I&APs the opportunity to seek clarity regarding the projects as well as the opportunity to provide valuable input/ to inform the EIA process.
- » Collecting data to understand all the potential positive and negative social impact of the proposed project
- » Obtain and record comments for inclusion in the submission to DFFE.

DISCUSSION SESSION

Raised by	Question/ Comment	Response
Mrs Kokie C York	<ul style="list-style-type: none"> » Concerned about In-migration of job seekers in the area. » She indicated that most people in the area are unskilled and hopeful that they will involve them during the construction phase of the project » Concerned about the gravel road they are currently using and indicated that it will be worsen by the construction vehicles during construction phase. » She advised that we include the Papkui Agricultural Association and Danline FPA on our database to notify the on EIA process. » She welcomes the project as it will benefit her family, especially catering for the construction workers and accommodation. » She has no objections to the project 	Noted

WAY FORWARD AND CLOSURE

Further project information will be relayed accordingly.

Molatela Ledwaba thanked Mrs Kokie C York for making time available to attend the project introduction meeting and their input into the process.

**INTRODUCTION MEETING WITH ADJACENT AND AFFECTED LANDOWNERS
HELD ON THURSDAY, 10 NOVEMBER 2022
VENUE: TELEPHONICALLY**

Date & Time	Stakeholder Group	Summary of Matters Raised
Thursday, 10 November 2022 at 08h:00	Mr Arie Fourie (farm 301)	<ul style="list-style-type: none"> » Requested to be included in the whole EIA process » No matters pertaining to social and environmental issues were raised. » No objection to the project
Thursday, 10 November 2022 at 08h:10	Mr Janneman Jordaan (Farm 300 Ptn 4)	<ul style="list-style-type: none"> » Requested to be included in the whole EIA process » No matters pertaining to social and environmental issues were raised. » No objection to the project
Thursday, 10 November 2022 at 08h:40	Mr Hendre Engela (Rooipan Farm)	<ul style="list-style-type: none"> » Requested to be included in the whole EIA process » No matters pertaining to social and environmental issues were raised. » No objection to the project
Thursday, 10 November 2022 at 09h:20	Mr Arno Opperman (farm 299)	<ul style="list-style-type: none"> » Requested to be included in the whole EIA process » No matters pertaining to social and environmental issues were raised. » No objection to the project
Thursday, 10 November 2022 at 09h:20	Mr Wilfred Goliath (Silver Stream)	<ul style="list-style-type: none"> » Requested to be included in the whole EIA process » No matters pertaining to social and environmental issues were raised. » No objection to the project

**ENVIRONMENTAL IMPACT ASSESSMENT AND
PUBLIC PARTICIPATION PROCESSES
FOR THE
PROPOSED DEVELOPMENT OF THE 150MW LIMESTONE PV1 AND
LIMESTONE PV 2 FACILITIES AND ASSOCIATED INFRASTRUCTURE
NEAR DANIELSKUIL, NORTHERN CAPE PROVINCE**

**FOCUS GROUP MEETING WITH LANDOWNERS
HELD ON WEDNESDAY, 26 JANUARY 2023 AT 11:10am
VENUE: MICROSOFT TEAMS, VIRTUAL MEETING**

Notes for the Record prepared by:

Molatela Ledwaba

Savannah Environmental (Pty) Ltd

E-mail: publicprocess@savannahsa.com

Please address any comments to Savannah Environmental at the above address

MEETING ATTENDEES

Name	Company	Designation
Nicolene Venter (NV)	Savannah Environmental	Public Participation and Social Consultant
Molatela Ledwaba (ML)	Savannah Environmental	Public Participation and Social Consultant
Nkhensani Masondo (NM)	Savannah Environmental	Environmental Assessment Practitioner
Matthew Ellero (ME)	Savannah Environmental	Environmental Assessment Practitioner
Matthew Muldoon (MM)	AGV Project (Pty) Ltd	Environmental Project Manager
FC Knoetze (FK)	AGV Project (Pty) Ltd	Project Development Lead
Paul Dos Santos (PDS)	Landowner	Engeland Farm
Johan du Plessis (JDP)	Landowner	Grootpan Farm
Janneman Jordan (JJ)	Landowner	Engeland Farm

WELCOME AND INTRODUCTION

NV welcomed the attendees at the Focus Group Meeting (FGM) for the Limestone PV1 and PV2 Facilities and Associated Infrastructure.

The Agenda was provided and presented by **NV**

APOLOGIES

No apologies were rendered.

PURPOSE OF THE MEETING

NV indicated the purpose of the meeting as follows:

- » Provide stakeholders and I&APs with an overview of the project.
- » Summary of the Environmental Impact Assessment (EIA) and public Participation being undertaken
- » Provide stakeholders the opportunity to seek clarity regarding the environmental studies.
- » Opportunity to provide valuable input into/ to inform the EIA process
- » Obtain and records comments for inclusion in the Final Scoping Report to be submitted to the DFFE.

BACKGROUND & TECHNICAL ASPECTS REGARDING THE PROPOSED PROJECT

ME provided an overview of the proposed Limestone PV1 and Limestone PV2 facilities and associated infrastructure located on portion 4 of Farm Engeland 300 within the Northern Cape

Province, as well as a summary of the findings of the Scoping process undertaken. **ME** presented the following key information:

- » A Project overview for Limestone PV1 and Limestone PV2 Facilities and associated infrastructure.
- » The approach taken for the Scoping Process for the Environmental Impact Assessment Process
- » The specialist studies that formed part of the scoping environmental assessment.
- » An overview of the Scoping and Environmental Impact Assessment (EIA) Process.
- » A summary of the potential environmental impacts identified/ sensitivities identified.
- » The Plan of study for the Scoping and EIA phase.

A copy of the virtual participants' attendance is attached as **Appendix A** and the presentation is attached as **Appendix B** to the meeting notes.

DISCUSSION SESSION

Question/ Comment	Response
<p>JDP enquired on whether the scope of the EIA will only consider the project area, or will it extend to the gravel road leading to the project site? JDP asked how will the dust be monitored</p> <p>and will the maintenance of the gravel road be handled?</p> <p>JDP enquired on how the security impacts of the project on the surrounding area be assessed during the construction phase, and whether the EIA and EMPr cover all these aspects during construction?</p>	<p>NM These aspects form part of a social impact assessment (SIA) This study will consider the project area and surrounding area. As a result, issues such as road access, dust, noise, and security for the project site will be thoroughly evaluated in the social impact assessment. We will clearly identify the impact, as well as any mitigation measures associated with all of the impacts. I hope this helps to answer your question.</p> <p>NM As part of this, various impacts will be identified, and associated mitigation measures will be implemented.</p> <p>FC A Traffic Impact Assessment will be conducted to identify any issues related to access road.</p>

WAY FORWARD AND CLOSURE

ML reminded all the attendees that the review period for the Scoping Report will end on the 06 February 2023 and once the reports have been updated with written comments received during the 30-day review and comment period, the final scoping reports will be submitted to the DFFE for acceptance. Thereafter, the EIA phase will commence. Further project information will be relayed accordingly.

NV asked whether there were any other environmental-related concerns or comments. It was noted by all attendees that no further comments needed to be raised at this time.

She thanked all the attendees for making time available to attend the focus group meeting and their input into the process.

The Meeting was closed at 11:45am

LIST OF ABBREVIATIONS AND ACRONYMS

AGV	African Green Venture	EIA	Environmental Impact Assessment
PV	Photovoltaic	SIA	Social Impact Assessment

APPENDIX A

1. Summary

Meeting title	Invitation to Focus Group Meeting for Limestone PV1 and PV2 Solar PV Facilities, in Northern Cape with Landowners
Attended	9
Start time	1/26/23, 10:54:05 AM
End time	1/26/23, 11:40:40 AM
Meeting duration	46m 35s
Average attendance time	39m 39s

2. Participants

Name	First join	Last leave	In-meeting duration	Email	Participant ID (UPN)	Role
Nicolene Venter	1/26/23, 10:54:18 AM	1/26/23, 11:40:36 AM	46m 18s	nicolene@savannahsa.com	nicolene@savannahsa.com	Presenter
Molatela Ledwaba	1/26/23, 10:57:38 AM	1/26/23, 11:40:32 AM	42m 54s	molatela@savannahsa.com	molatela@savannahsa.com	Organizer
Matthew Ellero	1/26/23, 10:57:53 AM	1/26/23, 11:40:33 AM	42m 40s	matthew@savannahsa.com	matthew@savannahsa.com	Presenter
Nkhensani Masondo	1/26/23, 10:59:26 AM	1/26/23, 11:40:29 AM	41m 3s	nkhensani@savannahsa.com	nkhensani@savannahsa.com	Presenter
Matthew Muldoon	1/26/23, 11:00:13 AM	1/26/23, 11:40:22 AM	40m 9s	matthew@agv-za.co.za	matthew@agv-za.co.za	Attendee
FC Knoetze	1/26/23, 11:00:15 AM	1/26/23, 11:40:40 AM	40m 24s	fc@agv-za.co.za	fc@agv-za.co.za	Attendee
Paul Dos Santos	1/26/23, 11:01:06 AM	1/26/23, 11:40:23 AM	39m 16s	p.dossantos@leadepc.com	p.dossantos@leadepc.com	Attendee
Johan	1/26/23, 11:02:39 AM	1/26/23, 11:40:22 AM	37m 43s			Attendee
Janneman Jordaan	1/26/23, 11:14:03 AM	1/26/23, 11:40:23 AM	26m 20s			Attendee


3. In-Meeting Activities

Name	Join time	Leave time	Duration	Email	Role
Nicolene Venter	1/26/23, 10:54:18 AM	1/26/23, 11:40:36 AM	46m 18s	nicolene@savannahsa.com	Presenter
Molatela Ledwaba	1/26/23, 10:57:38 AM	1/26/23, 11:40:32 AM	42m 54s	molatela@savannahsa.com	Organizer
Matthew Ellero	1/26/23, 10:57:53 AM	1/26/23, 11:40:33 AM	42m 40s	matthew@savannahsa.com	Presenter
Nkhensani Masondo	1/26/23, 10:59:26 AM	1/26/23, 11:40:29 AM	41m 3s	nkhensani@savannahsa.com	Presenter
Matthew Muldoon	1/26/23, 11:00:13 AM	1/26/23, 11:40:22 AM	40m 9s	matthew@agv-za.co.za	Attendee
FC Knoetze	1/26/23, 11:00:15 AM	1/26/23, 11:40:40 AM	40m 24s	fc@agv-za.co.za	Attendee
Paul Dos Santos	1/26/23, 11:01:06 AM	1/26/23, 11:40:23 AM	39m 16s	p.dossantos@leadepc.com	Attendee
Johan	1/26/23, 11:02:39 AM	1/26/23, 11:40:22 AM	37m 43s		Attendee
Janneman Jordaan	1/26/23, 11:14:03 AM	1/26/23, 11:40:23 AM	26m 20s		Attendee

APPENDIX B

**LIMESTONE PV1 AND LIMESTONE PV2 AND
ASSOCIATED INFRASTRUCTURE**

Public Participation Meetings
January 2023



1

MEETING AGENDA


- Welcome and introduction
- Meeting Conduct
- Purpose of the Meeting
- Project Overview
- EIA Process & Findings of the Specialist Studies
- Way forward
- Discussion session



2

CONDUCT OF THE MEETING


- Recording of the meeting
- Please stay on mute during the presentation
- Register attendance on Chat function (name, surname & affiliation)
- Questions and comments can be submitted on the chat function during the presentation – team will respond after presentation
- No additional questions to be submitted on the chat function after the presentation
- Please hold all verbal questions until after the presentation
- Please raise your hand (virtual function) and state your name when to asking a question or raising a comment and state your name.



3

PURPOSE OF THE MEETING

- Provide stakeholders and I&APs with an overview of the project
- Summary of the Environmental Impact Assessment (EIA) & Public Participation being undertaken
- Provide stakeholders the opportunity to seek clarity regarding the environmental studies
- Opportunity to provide valuable input into/to inform the EIA process
- Obtain and record comments for inclusion in the Final Scoping Report to be submitted to the DFFE



4

PROJECT OVERVIEW (Matthew Ellero)

savannah

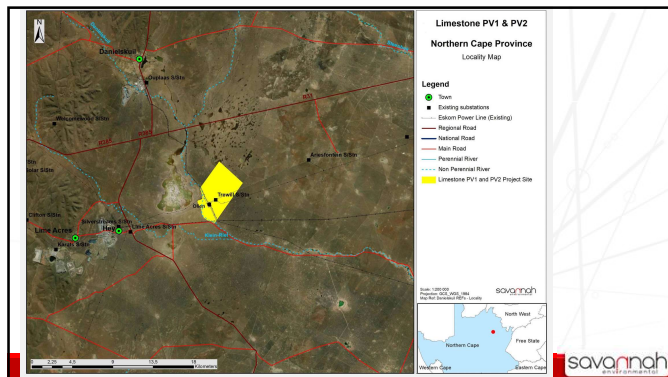
5

PROJECT OVERVIEW

- **Applicant:** AGV Projects (Pty) Ltd
- **Affected Property:** Portion 4 of Farm Engeland 300
- Limestone PV1 and Limestone PV2 Facilities - contracted capacity of up to 150MWp each:
 - Solar PV array comprising PV modules and mounting structures.
 - Inverters and transformers.
 - Cabling between the project components.
 - On-site facility substation and power line/s to facilitate the connection between the Solar PV Facility, the 400kV collector substation and the Eskom electricity grid at Aries Substation.
 - Battery Energy Storage System (BESS).
 - Site offices and maintenance buildings, including workshop areas for maintenance and storage.
 - Laydown areas and temporary man camp area.
 - Access roads, internal distribution roads and fencing around the development area.

savannah

6



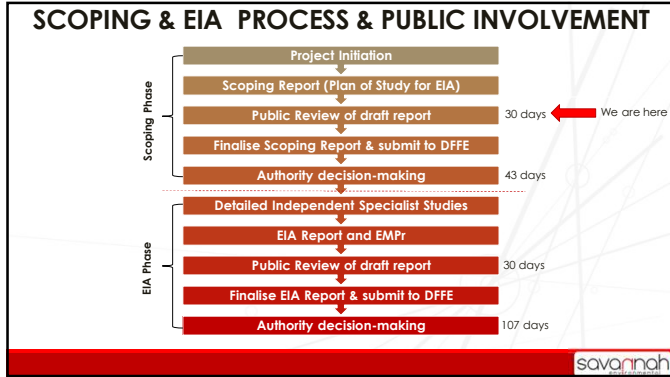
7

APPROACH TO SCOPING

- Identification of issues – social and biophysical environment
- Prepare a Plan of Study for the EIA phase
- Potential sensitive areas identified through specialist desktop studies
- Design of appropriate facility layout to be informed by sensitive areas identified through the EIA process
- A facility layout to be presented and considered in EIA Phase
- Application of the mitigation hierarchy (i.e. avoid, minimise and mitigate)
- Any further micro-siting required to facility layout will be addressed in EIA phase

savannah

8



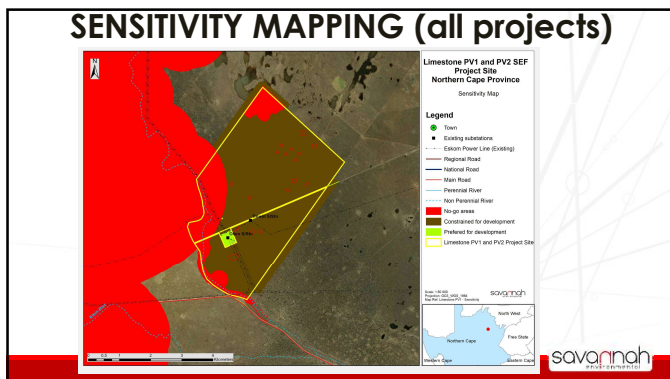
9

SPECIALIST STUDIES

Specialist	Area of Expertise
Andrew Husted of The Biodiversity Company	Ecology (flora and fauna); freshwater; avifauna; soils and agricultural potential
Jenna Lavin of Cedar Tower Solutions (CTS)	Heritage (incl. Archaeology and Palaeontology)
Laurens du Plessis of LOGIS	Visual
Molatela Ledwaba of Savannah Environmental	Social

savannah

10



11

ENVIRONMENTAL IMPACTS/SENSITIVITIES IDENTIFIED

	Scoping of issues
Ecological Impacts (fauna, flora and freshwater);	<ul style="list-style-type: none"> • Destruction, fragmentation and degradation of habitats and ecosystems • Spread and/or establishment of alien and/or invasive species • Direct mortality of fauna • Reduced dispersal/migration of fauna • Environmental pollution due to water runoff, spills from vehicles and erosion • Disruption/alteration of ecological life cycles (breeding, migration, feeding) due to noise, dust, heat radiation and light pollution. • Staff and others interacting directly with fauna (potentially dangerous) or poaching of animals <p>(High - Very High Sensitivity)</p>
Impacts on avifauna	<ul style="list-style-type: none"> • Destruction, fragmentation and degradation of habitats and ecosystems • Spread and/or establishment of alien and/or invasive species • Direct mortality of avifauna • Reduced dispersal/migration of fauna • Environmental pollution due to water runoff, spills from vehicles and erosion • Disruption/alteration of ecological life cycles (breeding, migration, feeding) due to noise, dust, heat radiation and light pollution. • Staff and others interacting directly with fauna (potentially dangerous) or poaching of animals <p>(High - Very High Sensitivity)</p>
Impacts on Soil & Agricultural	<ul style="list-style-type: none"> • Limited to no impacts identified <p>(Very Low - Low Sensitivity)</p>

savannah

12

ENVIRONMENTAL IMPACTS/SENSITIVITIES IDENTIFIED

	Scoping of issues
Impacts on Heritage (archaeology and palaeontology)	<ul style="list-style-type: none"> Destruction of significant heritage resources (Sensitivity to be determined through site visit)
Visual Impacts	<ul style="list-style-type: none"> The viewing of the PV facility infrastructure and activities (Moderate - High Sensitivity)
Social Impacts	<ul style="list-style-type: none"> Creation of local employment and business opportunities, skill development and training associated with construction phase Enhance the security of SA's energy supply and decrease coal dependence The potential risks to safety of local communities associated with the presence of construction workers on site The potential risks to livestock and farming infrastructure and the presence of workers on site Potential, traffic, noise, dust and safety impacts associated with construction related activities Impact on rural sense of place Impact of loss of employment and income (Moderate - High Sensitivity)

13

PLAN OF STUDY FOR THE EIA PHASE

- The Plan of Study for EIA is intended to provide a summary of the key findings of the Scoping Phase and to describe the activities to be undertaken in the EIA Phase of the EIA process.
- Based on the findings of the Scoping assessment, the following further investigations within the EIA Phase are required:
 - Ecological Impact Assessment (including flora and fauna)
 - Avifauna Impact Assessment
 - Visual Impact Assessment
 - Socio-Economic Impact Assessment
 - Heritage Impact Assessment (including archaeology, palaeontology and cultural heritage)

14

WAY FORWARD (Molatela Ledwaba)

15

WAY FORWARD

- Meeting notes and presentation will be distributed
- Scoping Report review period: **06 January 2023 to 06 February 2023**
(can be downloaded from the Savannah Environmental website)
- Submission of Final Scoping Reports to DFFE - February 2023
- EIA & EMPPr for review – Q2 of 2023
- Our Public Participation team is available to answer any questions on the development and register I&APs to receive important project information as it becomes available.

16

WHO TO CONTACT FOR FURTHER INFORMATION

Savannah Environmental (Pty) Ltd

Molatela Ledwaba

Email: publicprocess@savannahsa.com

PO Box 148, Sunninghill, 2157

Tel: 011 656 3237

Mobile: 060 978 8396 (*including "please call me"*)

Fax: 086 684 0547

www.savannahSA.com

savannah
Environmental