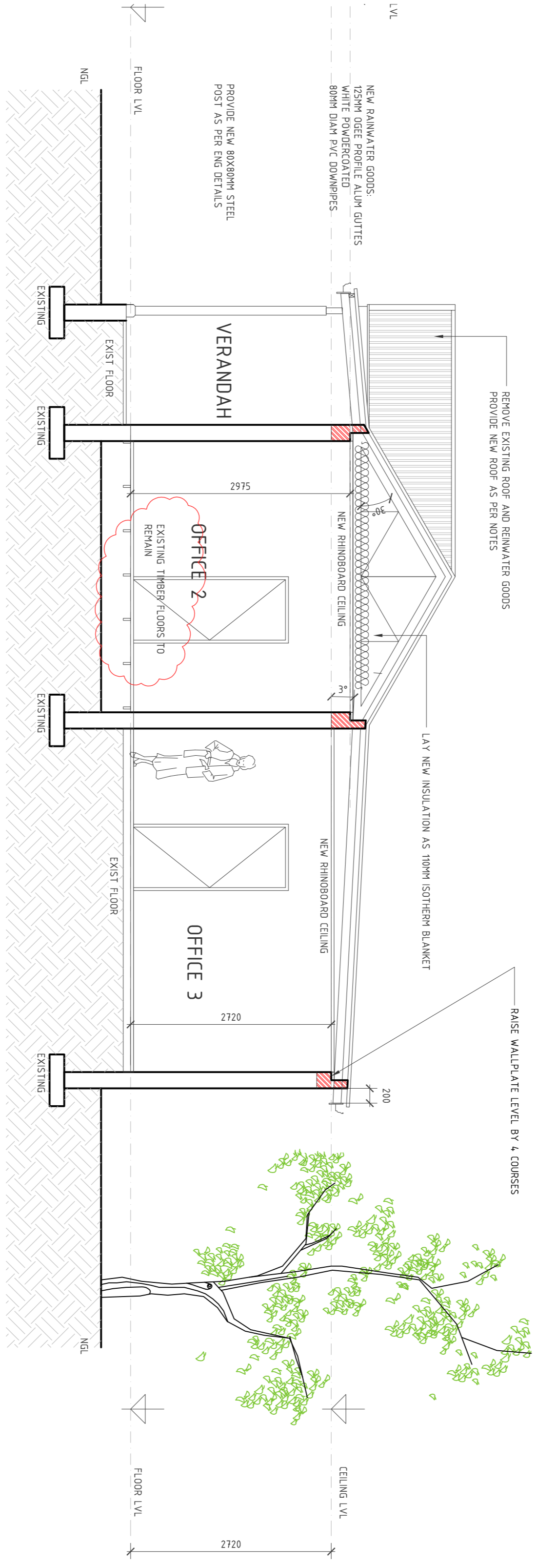
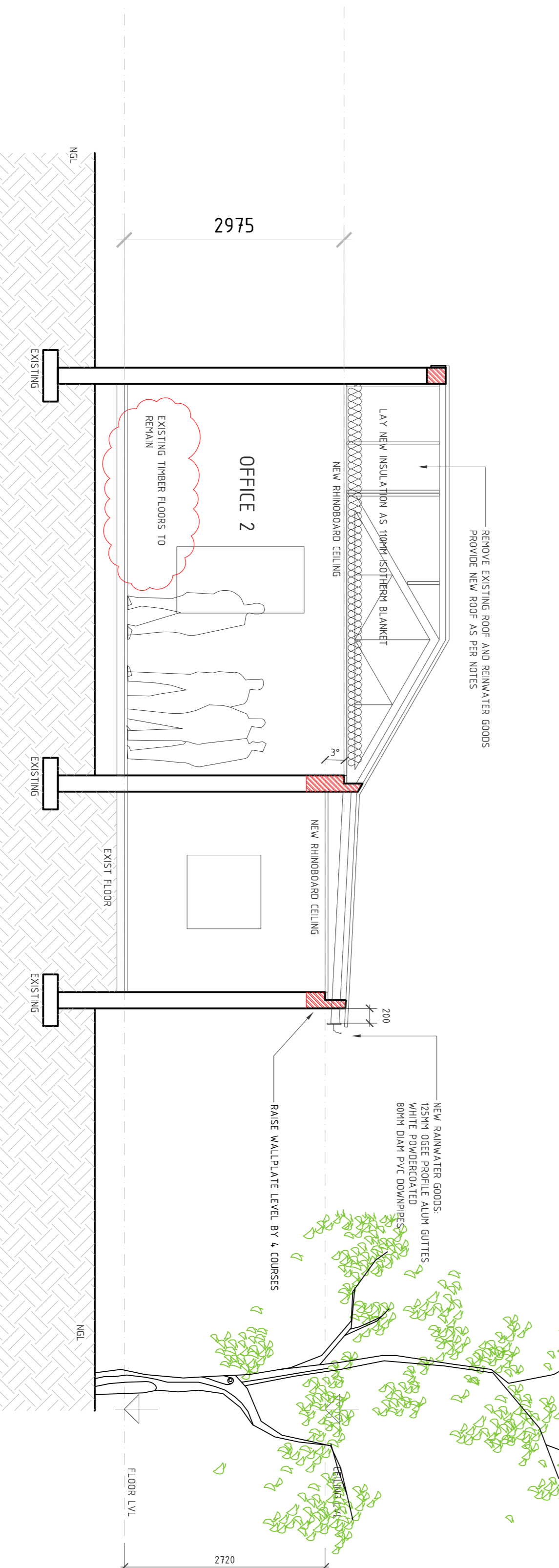


SECTION C-C
1: 50



SECTION A-A
1: 50



SECTION A-A
1: 50

CONSTRUCTION NOTES:

ROOF:
ALL IN ACCORDANCE WITH PART 1. ROOFS OF SANS 1040:2011 & PART 10/ALLS
PITCH : MAIN ROOF - 3% - LEAN TO ROOF - 3%
KIP-LOK ROOF 416 SHEETING FACTORY PAINTED ON SABS APPROVED 259 MICRON
UNDERLAY ON SHYTS PARING AT 1400 CENTRES ON SABS APPROVED 259 MICRON
200 C/C FOR SABS TESTS IN 1000mm PITCHED ROOF IN 1000mm COMBINATION AT 190k
SHEETING TO BE INSTALLED IN ACCORDANCE WITH MANUF RECOMMENDED SPECS INCL
ALL RECOMMENDED ACCESSORIES, FASTENERS, FLASHINGS ETC - NOT NEGOTIATIONS
RAFTERS TO BE TIED DOWN WITH 4000mm LONG X 30mm WIDE X 1600mm THICK
GALVANISED STEEL STRAPS.

CEILING:
STRIP ALL EXISTING CEILING
PROVIDE NEW RHINOBOARD FIBREGLASS FIBRE CEILING TO OFFICES AND
PAINTED PLASTER BOARD TO BATHROOMS, ALL FINISHES AND
BATHROOMS AND VERANDAHS TO RECEIVE NITEL CEMENT CEILING BOARDS
WITH SOLID HARDWOOD QUADRANT CORNICES
PAINTED AND PAINT WITH PLYSOUND WHITE EMERALD PAINT

WALLS:
IN ACCORDANCE WITH PART K - WALLS OF SANS 1040:2011 6/1
EXISTING BRICK WALLS TO BE CLEANED DOWN AND RE-PAINTED PLASTER
MORTAR AND ALL - COLOUR TO APPROVAL
NEW BRICKWORK - MIN 70% CLASS II HORTICAT TO COPY WITH SANS
2001-12M PLASTERED AND PAINTED APPROVED COLOUR PROVIDE
GALVANISED BRICKWORK EVERY 3rd COURSE
PROVIDE DPC AT FLOOR LEVEL AND BELOW WINDOW SILL

**THE OUTER FACE OF THE INNER SKIN IS TO BE PAINTED WITH BROWN
PAINT.**

WINDOWS :

GLAZING IN ACCORDANCE WITH PART N - GLAZING OF SANS 1040:2011
EXISTING WINDOW FRAMES TO BE SAVED DOWN AND PAINTED PLASTER
GLASS EMERALD
GLAZING TO BATHROOMS TO BE 4mm THICK PATTERED ANNEALED GLASS
MONOLITIC ANNEALED GLASS /TODDERED SAFETY GLASS

NOMINAL GLASS MAX SIZE OF THICKNESS (MM)	NOMINAL GLASS PANE (SQ M)	MAX SIZE OF THICKNESS (MM)	1/3
3	0.35	3	1.9
4	1.5	4	3.0
5	2.1	5	4.5
6	3.2	6	

FLOOR FINISHES:
FLOORS IN ACCORDANCE WITH PART J. FLOORS OF SANS 1040:2011
PROVIDE NEW CERAMIC TILES TO HALL, ROOMS & KITCHEN IN TERMS OF PART J
PROVIDE NEW CERAMIC TILES TO ALL BATHROOMS & KITCHEN IN TERMS OF PART J
OF SANS 1040

RAINWATER GOODS:
IN ACCORDANCE WITH PART 9 OF SANS 1040
250x100mm THICK NITELCERAMIC FLASHINGS, PRIMED & PAINTED
GUTTERS TO BE 125mm GDEE PROFILE ALUMINIUM
DOWNPIPES TO BE 125mm GDEE PVC TO DISCHARGE TO 100mm PVC DRAINS TO
DRAIN TO DISPOSITIONS AS SHOWN ON THE PLAN

FOUNDATIONS:
IN ACCORDANCE WITH PART H OF SANS 1040
ALL EXISTING FOUNDATIONS
DRAINAGE:
TO COPY WITH PART 9 OF SANS 1040
MC PANS TO COPY WITH SANS 1040 - P. 4.4 - TOILET PANS
TO COPY WITH SANS 1040 - P. 4.4 - TOILET PANS
AND SHALL DRAIN VIA 100mm PVC PIPES TO THE MAIN SEWER LINE AS
SHOWN

URINALS TO COPY WITH SANS 1040 - P. 4.5 - URINALS
THE WATER SUPPLY OUTLET TO ANY WASTE FITTING SHALL BE SITUATED
NOT LESS THAN 20mm ABOVE THE FLOOD-LEVEL OF SUCH FIXTURE
WASH HAND BASIN, SINKS AND BATHS SHALL BE FITTED WITH A ONE-WAY
SELF VENTILATING VALVES AND SHALL DRAIN VIA 100mm PVC PIPES TO
THE MAIN SEWER LINE AS SHOWN
ROOFING EYES TO BE CONTINUED UP TO GROUND LEVEL AND FITTED WITH
COVERS IN POSITIONS AS SHOWN ON PLAN
INSTALLATION OF DRAINS TO COPY WITH SANS 1040 - P. 4.22
PROVIDE REFINI AT CHANGE IN DIRECTION AS SHOWN PROVIDE T.E.'s AT ALL
JUNCTIONS
PROVIDE REFINI AT CHANGE IN DIRECTION AS SHOWN PROVIDE T.E.'s AT ALL
JUNCTIONS

NEW SLABS ON FILL:
IN ACCORDANCE WITH PART J OF SANS 1040
FLOOR FINISH ON 40mm THICK STRENGTH 1000kPa REINFORCED CONCRETE
AND 50mm SAND FILL TO BE 200mm REINFORCED CONCRETE
AND 50mm SAND FILL TO BE 200mm REINFORCED CONCRETE
& LIST TYPE OF POISSON USED, RATE OF APPLICATION & AREA TREATED
FILL UNDER SLABS TO BE FREE OF VEGETABLE MATTER & IS TO BE
INSPECTED & APPROVED BY ENR & REGISTERED BRIDGE ENGINEER
BEFORE CONSTRUCTION OF SLABS
NEW SUSPENDED FLOOR SLABS

REINFORCED/INJECTION BLOCK FLOOR SLAB AS PER ENGINEERS DETAILS
NEW RAINWATER PIPE
NEW SOLI VENT PIPE
CER TILE - CERAMIC TILES
C.I. DOWN CONSTRUCTION JOINT FIELD WITH SOFTBOARD & SEALED WITH
POLYURETHANE SEALANT ON BOTH SIDES

HOT WATER SERVICES:

HOT WATER SUPPLIED BY HEAT PUMPS
INSTALLATION TO BE DONE IN ACCORDANCE WITH THE REQUIREMENTS OF THE LOCAL
SANS 10254:2011, SANS 1040:2011, SANS 1040:2011, SANS 1040:2011, SANS 1040:2011
AND SANS 1040:2011
DESIGNS AND EQUIPMENT SHALL BE INSTALLED BY AN APPROVED AND LICENSED SUPPLIER
AND INSTALLED AND SHALL BE DONE IN ACCORDANCE WITH SANS 1040
ALL MATERIALS USED SHALL BE SABS COMPLIANT AND SHALL BE INSTALLED IN
ACCORDANCE WITH THE MANUFACTURERS INSTRUCTIONS
MAINTAIN PRESSURE MUST BE CHECKED BY THE PLUMBER PRIOR TO COMMENCEMENT OF
WORK
WORK TO BE CARRIED OUT BY AN APPROVED AND LICENSED PLUMBING CONTRACTOR THAT IS
LICENSED AND REGISTERED WITH THE PAIB

CERTIFICATES OF COMPLIANCE WILL BE SIGNED BY THE SAME ON COMPLETION OF THE WORK
HOT WATER PIPING:
ALL EXPOSED PIPES TO & FROM THE HOT WATER CYCLING TO BE INSULATED WITH
GLASS WOOL INSULATION BLANKET AND IS TO ACHIEVE A MIN OF INSULATION VALUE OF 1
ALL WATER SUPPLY PIPES TO BE CLASS 2 COPPER JOINED WITH BRASS COMPRESSION
FITTINGS WITH COMPRESSION WIND AND COPING WAYS
COPPER PIPES TO COPY WITH SANS 6599

**COPPER WATER PIPES SHALL BE FIXED TO WALLS OR CEILING WITH BRASS UNDERBRAYS
WITH RUBBER GASKET SEPARATIONS BETWEEN THE COPPER PIPE AND BRASS UNDERBRAY.**
ALL PIPE WORK SHALL BE INSPECTED IN ACCORDANCE WITH SANS 10254:1921 AND
SANS 1040:2011
DISINFECTION SANS 10221:1921 SHALL BE OBSERVED
SHOWERS TO BE FITTED WITH ENERGY EFFICIENT SHOWER ROSES

CERTIFICATES TO BE PROVIDED
IT IS ENTIRELY THE RESPONSIBILITY OF THE CONTRACTOR
TO PROVIDE THE FOLLOWING CERTIFICATES ON COMPLETION

1. CORE TEST RESULTS FOR ALL CONCRETE ON SITE (INCL OR READYMADE)
2. COMPLETION TESTS FOR ALL PIPES AS DIRECTED BY ENGINEER
3. SBL POISON CERTIFICATES
4. T11 & T18 TRUSS CERTIFICATES
5. GLAZING COMPLIANCE CERTIFICATES
6. ELECTRICAL COMPLIANCE CERTIFICATES
7. ELECTRICAL COMPLIANCE CERTIFICATES
8. ASBESTOS DISPOSAL CERTIFICATE (IF REQUIRED)

ALL WORK TO COPY WITH THE FOLLOWING SANS 2001 STANDARDS

- SANS 2001 B11 EARTHWORKS GENERAL
- SANS 2001 B12 CONCRETE WORKS (STRUCTURAL)
- SANS 2001 C11 CONCRETE WORKS (NON-STRUCTURAL)
- SANS 2001 C12 CONCRETE WORKS (NON-STRUCTURAL)
- SANS 2001 C13 CONCRETE WORKS (NON-STRUCTURAL)
- SANS 2001 C14 CONCRETE WORKS (NON-STRUCTURAL)
- SANS 2001 C15 CONCRETE WORKS (NON-STRUCTURAL)
- SANS 2001 C16 CONCRETE WORKS (NON-STRUCTURAL)
- SANS 2001 C17 CONCRETE WORKS (NON-STRUCTURAL)
- SANS 2001 C18 CONCRETE WORKS (NON-STRUCTURAL)
- SANS 2001 C19 CONCRETE WORKS (NON-STRUCTURAL)
- SANS 2001 C20 CONCRETE WORKS (NON-STRUCTURAL)
- SANS 2001 C21 CONCRETE WORKS (NON-STRUCTURAL)
- SANS 2001 C22 CONCRETE WORKS (NON-STRUCTURAL)
- SANS 2001 C23 CONCRETE WORKS (NON-STRUCTURAL)
- SANS 2001 C24 CONCRETE WORKS (NON-STRUCTURAL)
- SANS 2001 C25 CONCRETE WORKS (NON-STRUCTURAL)
- SANS 2001 C26 CONCRETE WORKS (NON-STRUCTURAL)
- SANS 2001 C27 CONCRETE WORKS (NON-STRUCTURAL)
- SANS 2001 C28 CONCRETE WORKS (NON-STRUCTURAL)
- SANS 2001 C29 CONCRETE WORKS (NON-STRUCTURAL)
- SANS 2001 C30 CONCRETE WORKS (NON-STRUCTURAL)
- SANS 2001 C31 CONCRETE WORKS (NON-STRUCTURAL)
- SANS 2001 C32 CONCRETE WORKS (NON-STRUCTURAL)
- SANS 2001 C33 CONCRETE WORKS (NON-STRUCTURAL)
- SANS 2001 C34 CONCRETE WORKS (NON-STRUCTURAL)
- SANS 2001 C35 CONCRETE WORKS (NON-STRUCTURAL)
- SANS 2001 C36 CONCRETE WORKS (NON-STRUCTURAL)
- SANS 2001 C37 CONCRETE WORKS (NON-STRUCTURAL)
- SANS 2001 C38 CONCRETE WORKS (NON-STRUCTURAL)
- SANS 2001 C39 CONCRETE WORKS (NON-STRUCTURAL)
- SANS 2001 C40 CONCRETE WORKS (NON-STRUCTURAL)
- SANS 2001 C41 CONCRETE WORKS (NON-STRUCTURAL)
- SANS 2001 C42 CONCRETE WORKS (NON-STRUCTURAL)
- SANS 2001 C43 CONCRETE WORKS (NON-STRUCTURAL)
- SANS 2001 C44 CONCRETE WORKS (NON-STRUCTURAL)
- SANS 2001 C45 CONCRETE WORKS (NON-STRUCTURAL)
- SANS 2001 C46 CONCRETE WORKS (NON-STRUCTURAL)
- SANS 2001 C47 CONCRETE WORKS (NON-STRUCTURAL)
- SANS 2001 C48 CONCRETE WORKS (NON-STRUCTURAL)
- SANS 2001 C49 CONCRETE WORKS (NON-STRUCTURAL)
- SANS 2001 C50 CONCRETE WORKS (NON-STRUCTURAL)
- SANS 2001 C51 CONCRETE WORKS (NON-STRUCTURAL)
- SANS 2001 C52 CONCRETE WORKS (NON-STRUCTURAL)
- SANS 2001 C53 CONCRETE WORKS (NON-STRUCTURAL)
- SANS 2001 C54 CONCRETE WORKS (NON-STRUCTURAL)
- SANS 2001 C55 CONCRETE WORKS (NON-STRUCTURAL)
- SANS 2001 C56 CONCRETE WORKS (NON-STRUCTURAL)
- SANS 2001 C57 CONCRETE WORKS (NON-STRUCTURAL)
- SANS 2001 C58 CONCRETE WORKS (NON-STRUCTURAL)
- SANS 2001 C59 CONCRETE WORKS (NON-STRUCTURAL)
- SANS 2001 C60 CONCRETE WORKS (NON-STRUCTURAL)
- SANS 2001 C61 CONCRETE WORKS (NON-STRUCTURAL)
- SANS 2001 C62 CONCRETE WORKS (NON-STRUCTURAL)
- SANS 2001 C63 CONCRETE WORKS (NON-STRUCTURAL)
- SANS 2001 C64 CONCRETE WORKS (NON-STRUCTURAL)
- SANS 2001 C65 CONCRETE WORKS (NON-STRUCTURAL)
- SANS 2001 C66 CONCRETE WORKS (NON-STRUCTURAL)
- SANS 2001 C67 CONCRETE WORKS (NON-STRUCTURAL)
- SANS 2001 C68 CONCRETE WORKS (NON-STRUCTURAL)
- SANS 2001 C69 CONCRETE WORKS (NON-STRUCTURAL)
- SANS 2001 C70 CONCRETE WORKS (NON-STRUCTURAL)
- SANS 2001 C71 CONCRETE WORKS (NON-STRUCTURAL)
- SANS 2001 C72 CONCRETE WORKS (NON-STRUCTURAL)
- SANS 2001 C73 CONCRETE WORKS (NON-STRUCTURAL)
- SANS 2001 C74 CONCRETE WORKS (NON-STRUCTURAL)
- SANS 2001 C75 CONCRETE WORKS (NON-STRUCTURAL)
- SANS 2001 C76 CONCRETE WORKS (NON-STRUCTURAL)
- SANS 2001 C77 CONCRETE WORKS (NON-STRUCTURAL)
- SANS 2001 C78 CONCRETE WORKS (NON-STRUCTURAL)
- SANS 2001 C79 CONCRETE WORKS (NON-STRUCTURAL)
- SANS 2001 C80 CONCRETE WORKS (NON-STRUCTURAL)
- SANS 2001 C81 CONCRETE WORKS (NON-STRUCTURAL)
- SANS 2001 C82 CONCRETE WORKS (NON-STRUCTURAL)
- SANS 2001 C83 CONCRETE WORKS (NON-STRUCTURAL)
- SANS 2001 C84 CONCRETE WORKS (NON-STRUCTURAL)
- SANS 2001 C85 CONCRETE WORKS (NON-STRUCTURAL)
- SANS 2001 C86 CONCRETE WORKS (NON-STRUCTURAL)
- SANS 2001 C87 CONCRETE WORKS (NON-STRUCTURAL)
- SANS 2001 C88 CONCRETE WORKS (NON-STRUCTURAL)
- SANS 2001 C89 CONCRETE WORKS (NON-STRUCTURAL)
- SANS 2001 C90 CONCRETE WORKS (NON-STRUCTURAL)
- SANS 2001 C91 CONCRETE WORKS (NON-STRUCTURAL)
- SANS 2001 C92 CONCRETE WORKS (NON-STRUCTURAL)
- SANS 2001 C93 CONCRETE WORKS (NON-STRUCTURAL)
- SANS 2001 C94 CONCRETE WORKS (NON-STRUCTURAL)
- SANS 2001 C95 CONCRETE WORKS (NON-STRUCTURAL)
- SANS 2001 C96 CONCRETE WORKS (NON-STRUCTURAL)
- SANS 2001 C97 CONCRETE WORKS (NON-STRUCTURAL)
- SANS 2001 C98 CONCRETE WORKS (NON-STRUCTURAL)
- SANS 2001 C99 CONCRETE WORKS (NON-STRUCTURAL)
- SANS 2001 C100 CONCRETE WORKS (NON-STRUCTURAL)

**Occupancy Classification: SANS 10400: 120
H3 : DWELLING HOUSE**

alteration to existing chester house
for the trustees for the time being of
the st johns school trust
on erf 7136, pmb
77 new england road, pmburg

Randhir Gobind & Associates
Architectural Consultants

317 bulwer street
pietermaritzburg
www.randhirgobind.co.za
sacab Reg : ST0142
P r S n r Arch Tech

designed by RG
drawn by RG
project no. 522

scales 1:50
date 10/2022
dwg no. 202 REV 2