

Approved

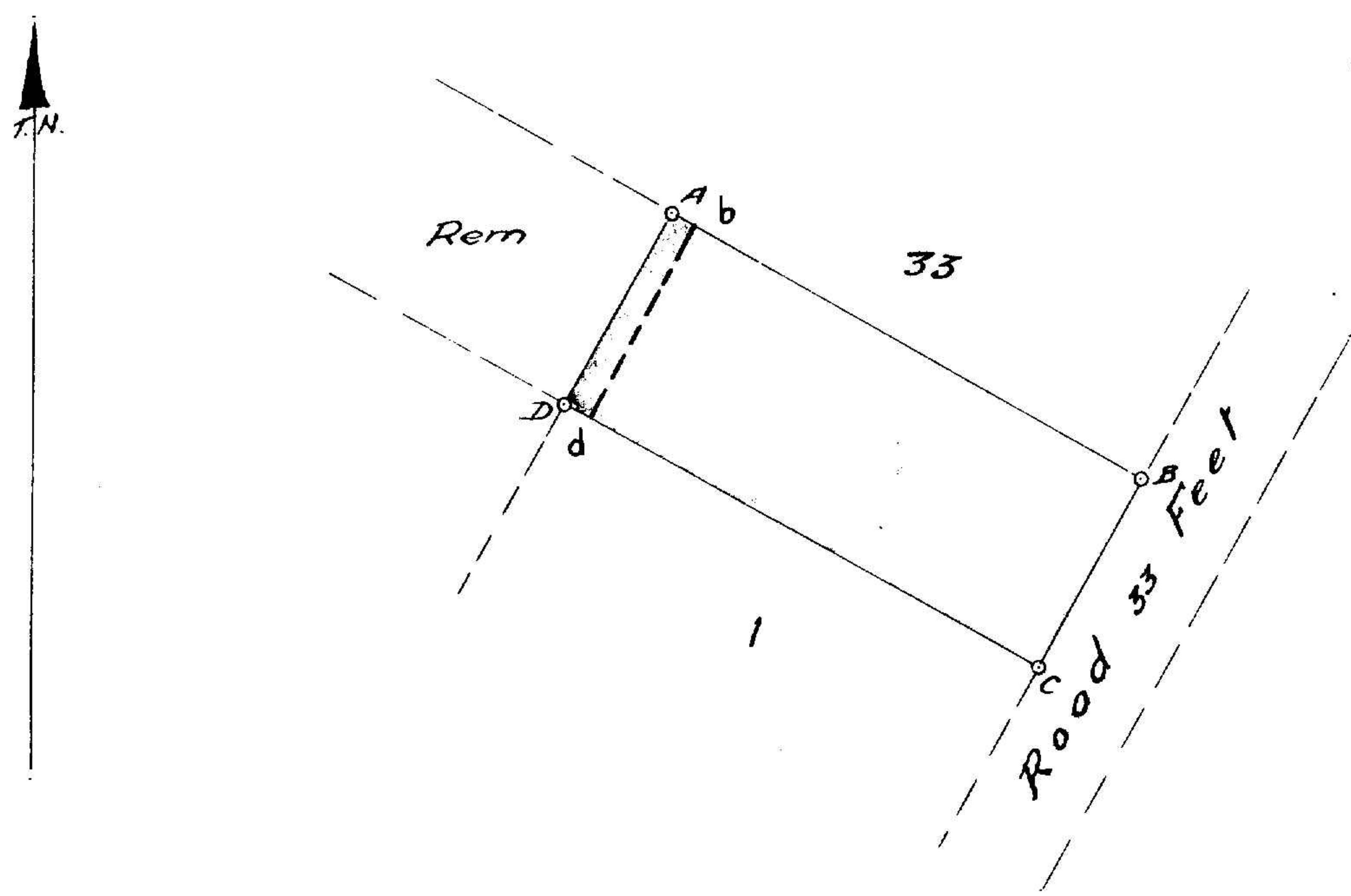
A. Gildenpfeffer
Surveyor General.

19 SEP 1929

A. Gildenpfeffer

5 SEP 1929

SN 788/96

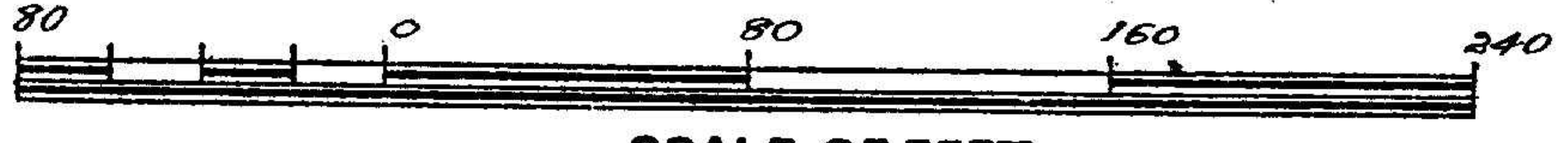


Reg. Div.
FU

New SUB 3 of
LOT 389 DUIKER FONTEIN

| Co-ordinates | | |
|--------------|---|---|
| | Y | X |
| A | | |
| B | | |
| C | | |
| D | | |

| Sides | | Direction angles | |
|-------|-----|------------------|-----|
| AB | 165 | A | 90° |
| BC | 66 | B | 90° |
| CD | 165 | C | 90° |
| DA | 66 | D | 90° |



SCALE OF FEET

The figure *ABCD* Represents - Acres 10,890 Square Feet
of land called *Sub 3 of 34 of Lot E^s of the Farm Duikerfontein No 78.*
situate in the County of *Victoria* Province of Natal

Surveyed in *July* 1929 by me
A. Lamont Forbes
Land Surveyor

This diagram is annexed to deed of transfer No. *3857/1929*
Dated *26th September 1929.*

(sgd) *M. P. Melville.*
Registrar Deeds

Original diagram is annexed to
Deed of Transfer No. *1779*
Dated *17th October 1911*

Sub. Vol. *230* Fol. *106*

FU 7A 1 D 3